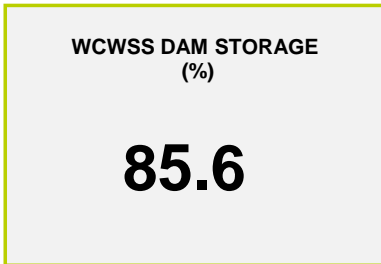
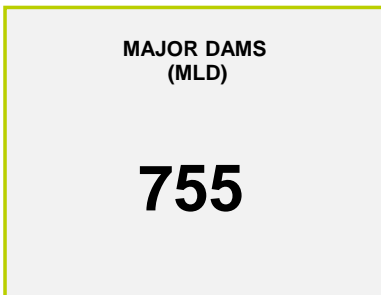




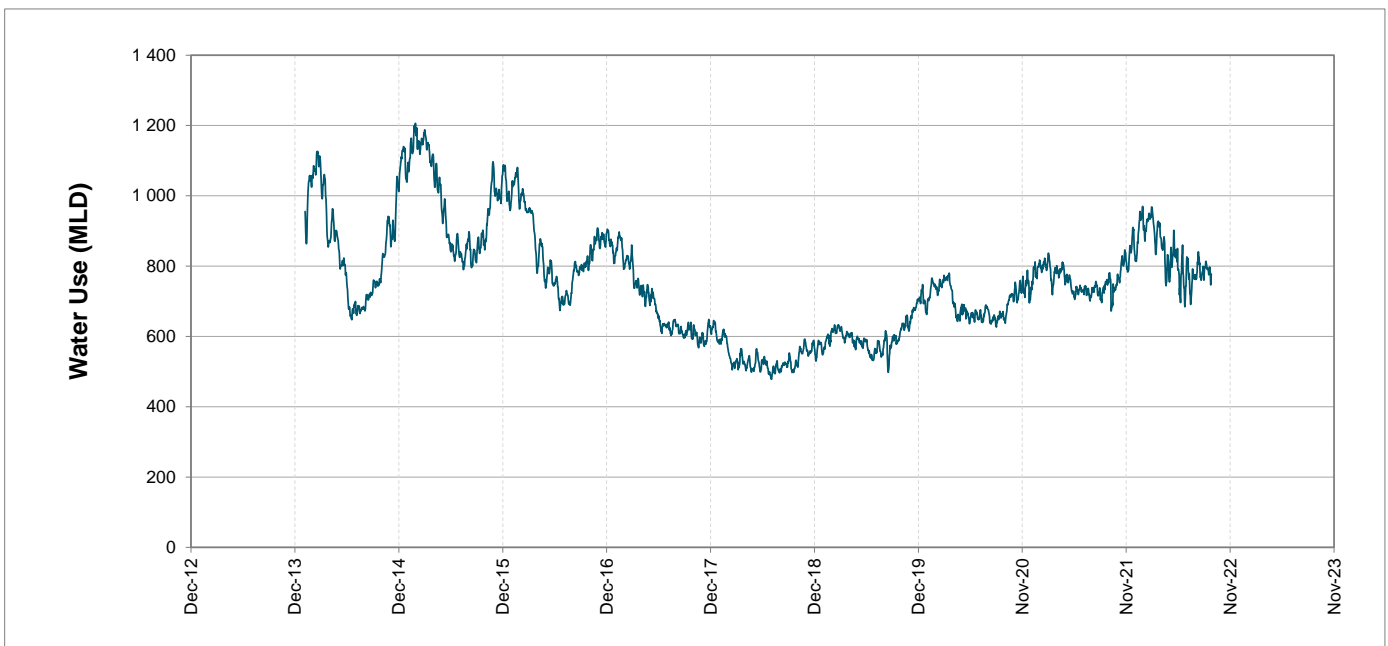
## Headline Statistics



## Water Production from Different Sources



## Overall Water Usage Trend (2010 - Present)



WCWSS means Western Cape Water Supply System

MLD means million litres per day

More information on Water Saving and Restrictions is available on the City of Cape Town's 'ThinkWater' website

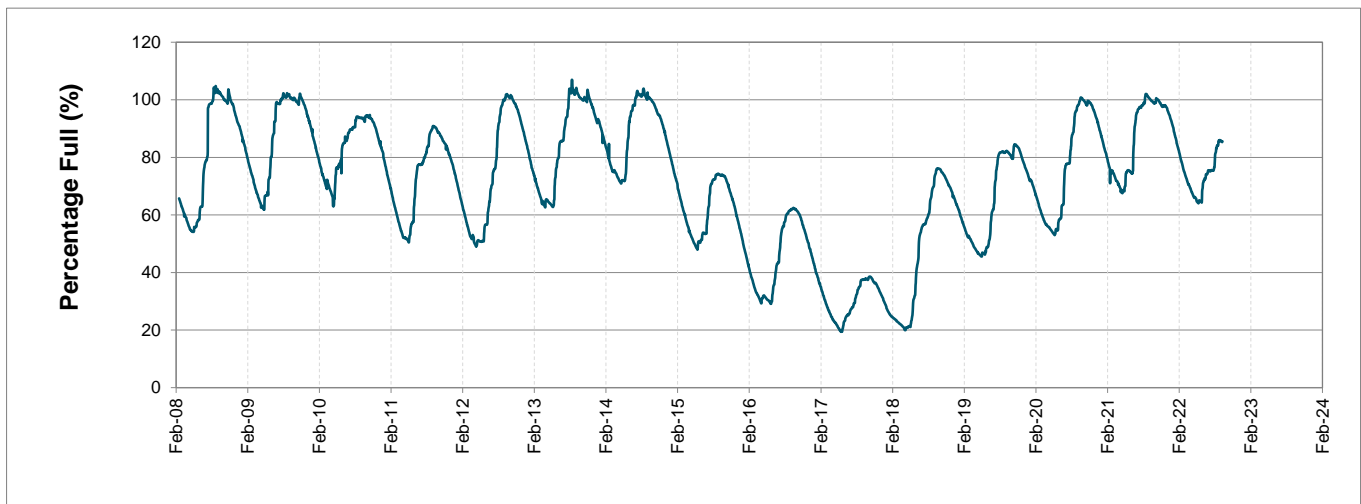
# Water Stored in Major Dams (WCWSS)

Overall Percentage Full **85.6%**

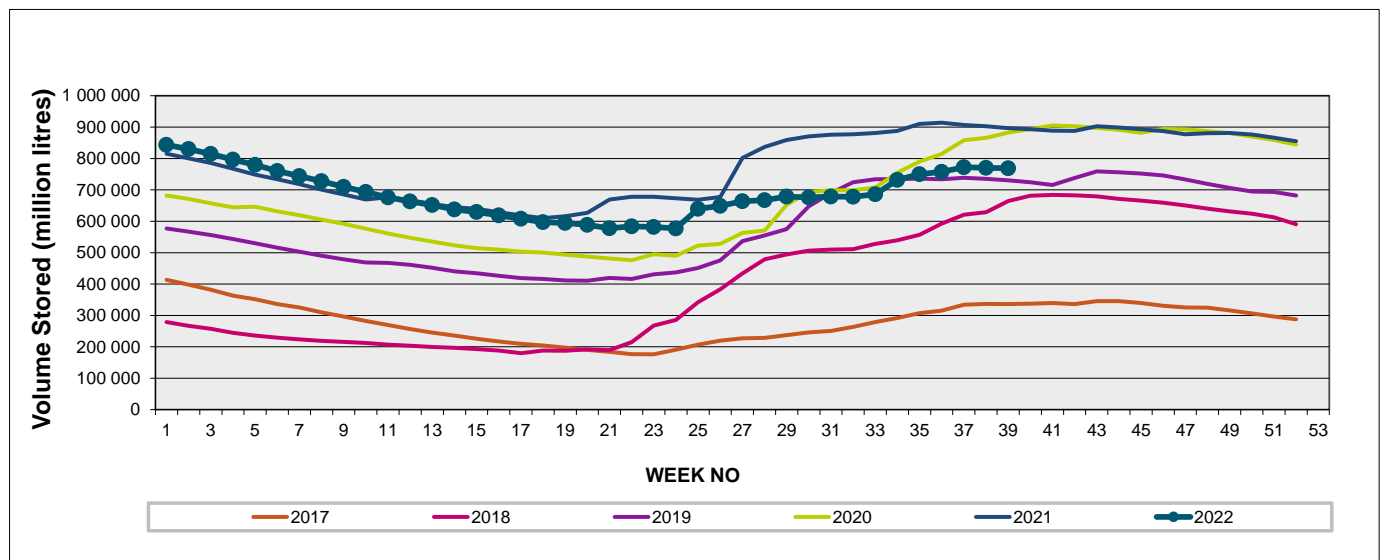
Weekly Change **-0.2%**

MAJOR DAMS (WCWSS)	STORAGE						
	CAPACITY	%	%	%	%	%	%
	MI	26 September 2022	Previous week	2021	2020	2019	2018
BERG RIVER	130 010	99.8	100.0	100.0	100.8	99.5	99.7
STEENBRAS LOWER	33 517	92.9	92.2	98.4	101.2	98.8	91.5
STEENBRAS UPPER	31 767	96.1	95.8	97.9	97.1	89.4	93.2
THEEWATERSKLOOF	480 188	84.8	85.2	100.3	98.7	72.3	56.3
VOËLVLEI	164 095	72.5	72.5	99.9	97.4	88.8	92.5
WEMMERSHOEK	58 644	87.2	86.5	99.0	97.8	91.7	94.5
<b>TOTAL STORED</b>	<b>898 221</b>	<b>768 945</b>	<b>770 284</b>	<b>897 770</b>	<b>887 085</b>	<b>737 636</b>	<b>667 376</b>
<b>% STORAGE</b>		<b>85.6%</b>	<b>85.8%</b>	<b>99.9%</b>	<b>98.8%</b>	<b>82.1%</b>	<b>74.3%</b>

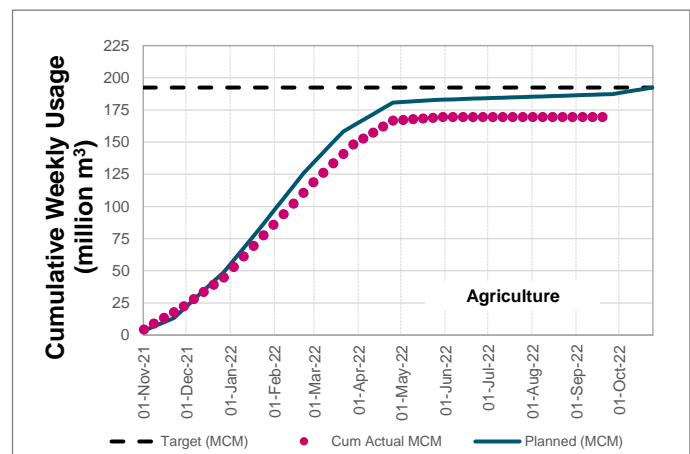
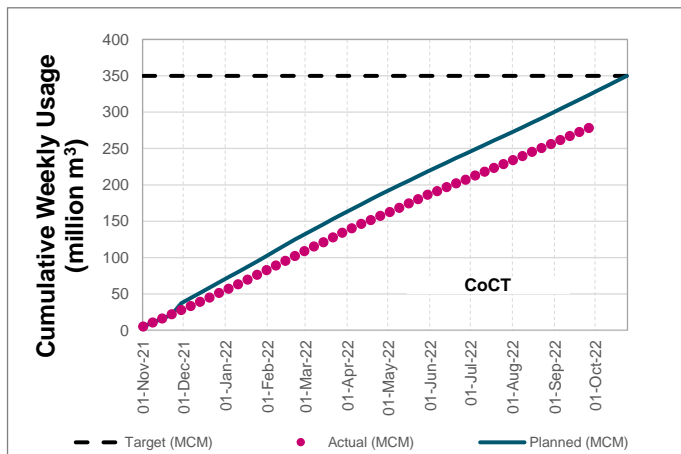
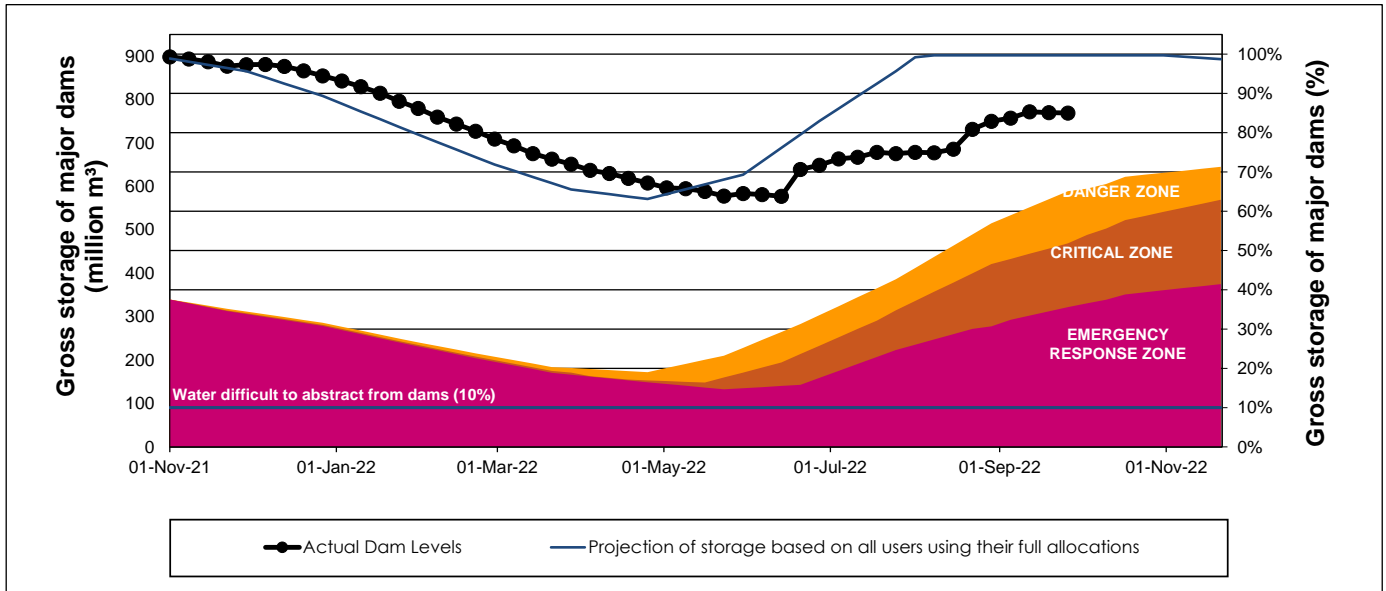
## WCWSS Storage Record (2008 - Present)



## WCWSS Comparative Storage Graph



# WCWSS Dam Storage and Water Use Tracking



## Water Stored in Minor Dams

Overall Percentage Full **80.4**

Weekly Change **-2.31**

MINOR DAMS	STORAGE						
	CAPACITY	%	%	%	%	%	%
	MI	26 September 2022	Previous week	2021	2020	2019	2018
ALEXANDRA (Table Mountain)	126	88.5	92.9	70.7	97.0	55.2	98.7
DE VILLIERS (Table Mountain)	243	82.9	89.0	85.0	99.1	99.7	99.7
HELY-HUTCHINSON (Table Mount)	925	99.8	99.8	99.8	99.2	100.2	100.3
KLEINPLAATS (Simon's Town)	1 368	76.4	76.6	100.0	100.2	81.2	99.6
LAND-EN-ZEEZICHT (Helderberg)	451	87.8	87.2	100.0	93.3	83.3	100.0
LEWIS GAY (Simon's Town)	182	32.3	35.5	95.0	89.1	73.9	100.9
VICTORIA (Table Mountain)	128	99.6	99.6	100.0	99.6	100.0	100.8
WOODHEAD (Table Mountain)	954	71.7	79.7	84.9	96.0	92.6	70.6
<b>Total Stored</b>	<b>4 377</b>	<b>3519.4</b>	<b>3620.6</b>	<b>4096.2</b>	<b>4226.5</b>	<b>3828.4</b>	<b>4042.3</b>
<b>Percentages stored</b>		<b>80.4</b>	<b>82.7</b>	<b>93.6</b>	<b>96.6</b>	<b>87.5</b>	<b>92.4</b>

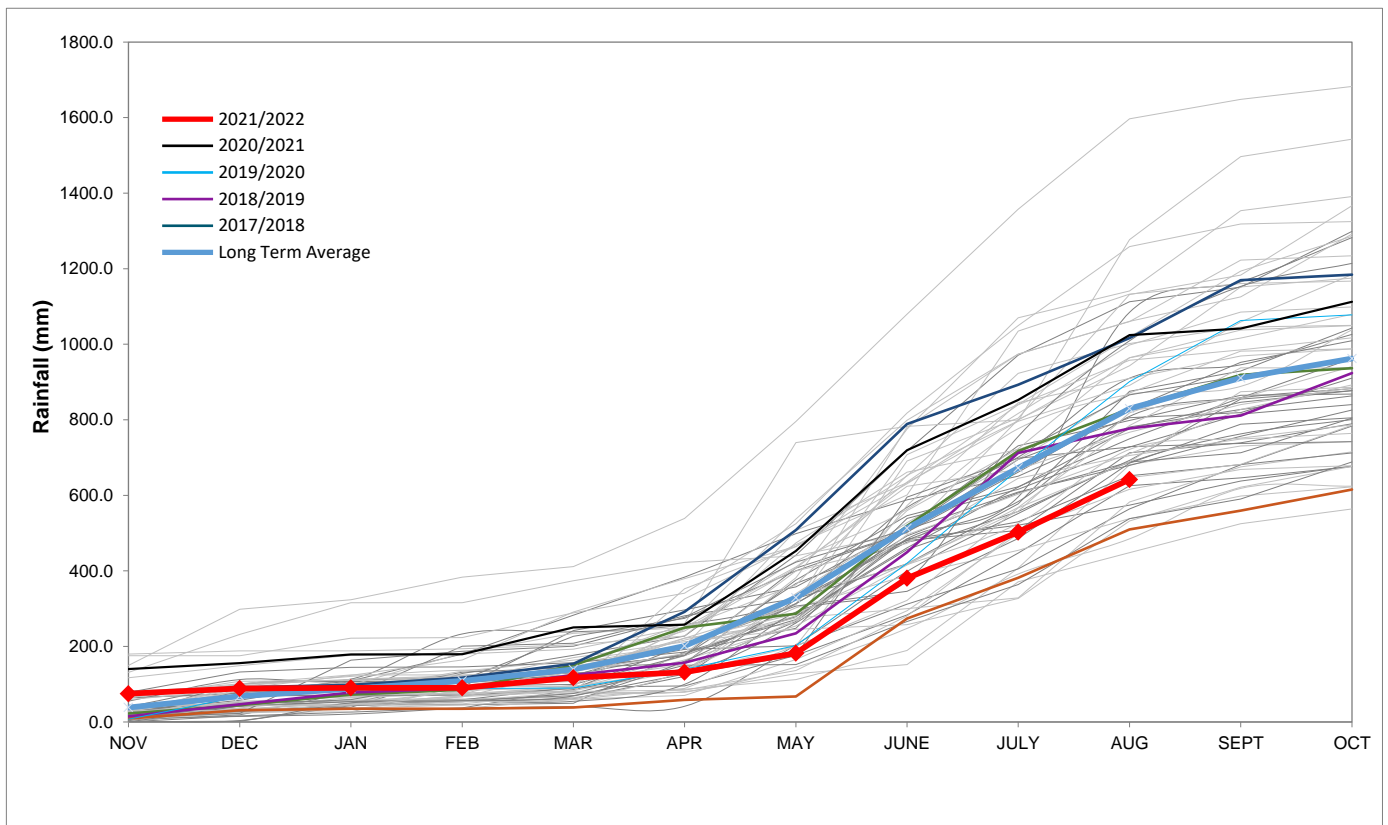
# Rainfall Recorded

RAINFALL (mm)	19-Sep	20-Sep	21-Sep	22-Sep	23-Sep	24-Sep	25-Sep	Sep	
								Total*	LT Average
Blackheath Upper	0.0	0.0	0.0	1.0	0.0	0.0	0.0	18.0	43.5
Brooklands	3.0	0.0	0.0	0.0	0.0	0.0	0.0	24.0	85.7
Newlands	0.0	0.0	0.0	2.2	0.0	0.0	0.0	46.2	168.3
Steenbras	0.0	0.0	0.0	7.0	0.0	0.0	0.0	36.4	83.6
Table Mountain (Woodhead)	2.0	0.0	0.0	0.0	11.0	0.0	0.0	55.5	147.2
Theewaterskloof	0.0	0.0	0.0	0.0	0.0	0.0	0.0	28.9	41.1
Tygerberg	0.0	0.0	0.0	1.0	0.0	0.0	0.0	13.9	47.0
Voëlvlei	0.0	0.0	0.0	2.0	0.0	0.0	0.0	19.0	45.1
Wemmershoek	0.0	0.0	0.0	5.4	0.0	0.0	0.0	31.2	90.3
Wynberg	0.0	0.0	0.0	6.5	0.0	0.0	0.3	48.4	97.8

Notes: \*Total/cummulative rainfall for month indicated above  
LT: Long Term

# Accumulated Monthly Rainfall at Wemmershoek

Note: Wemmershoek station used due to long record and mountainous location



## Drinking Water Quality

### SAMPLE PASS RATE

Month	Water Quality Compliance (%)	Target (%)
Jun-21	99.11	98
Jul-21	99.10	98
Aug-21	99.12	98
Sep-21	99.09	98
Oct-21	99.11	98
Nov-21	99.11	98
Dec-21	99.09	98
Jan-22	99.04	98
Feb-22	99.04	98
Mar-22	98.99	98
Apr-22	98.96	98
May-22	98.90	98
Jun-22	98.96	98
Jul-22	99.46	98.50
Aug-22	99.47	98.50

#### Notes:

This table shows CCT drinking water quality compliance according to the South African National Standard 241:2015. Compliance, measured against all prescribed chemical and microbiological components, consistently exceeds the very high CCT target of 98%. (Overall compliance percentages of continuous sampling and analysis are released on a monthly basis.)