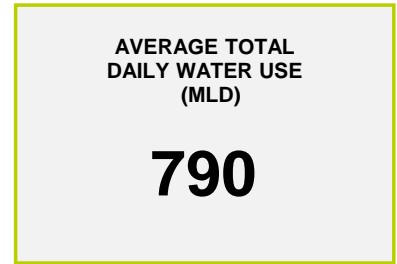
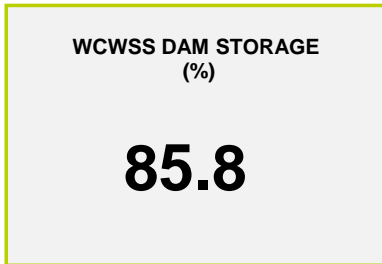
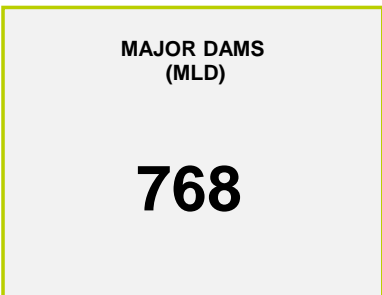




Headline Statistics



Water Production from Different Sources



Overall Water Usage Trend (2010 - Present)



WCWSS means Western Cape Water Supply System

MLD means million litres per day

More information on Water Saving and Restrictions is available on the City of Cape Town's 'ThinkWater' website

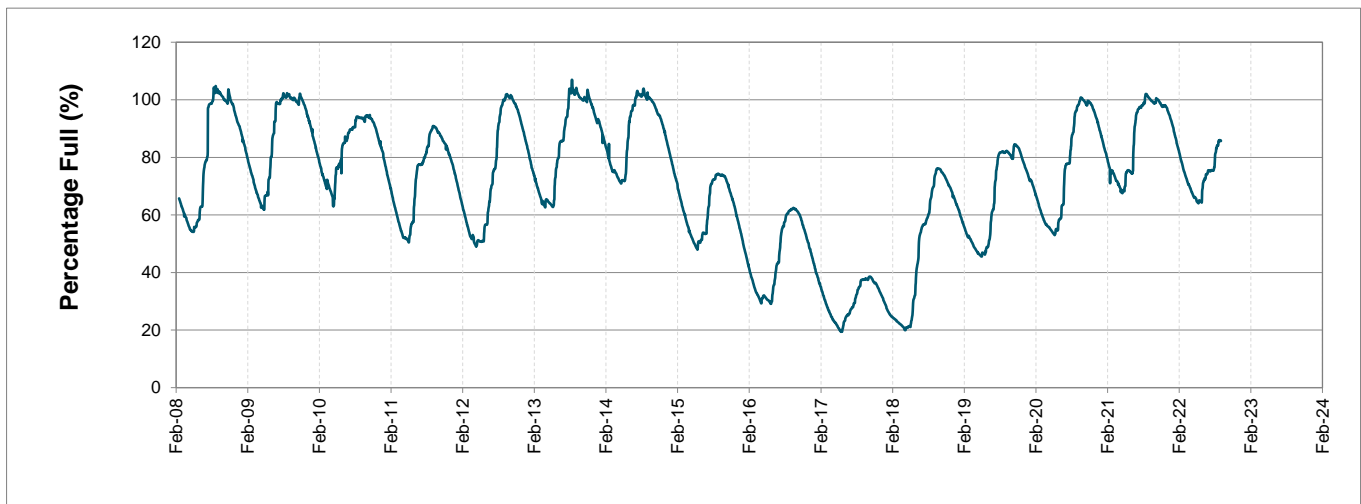
Water Stored in Major Dams (WCWSS)

Overall Percentage Full **85.8%**

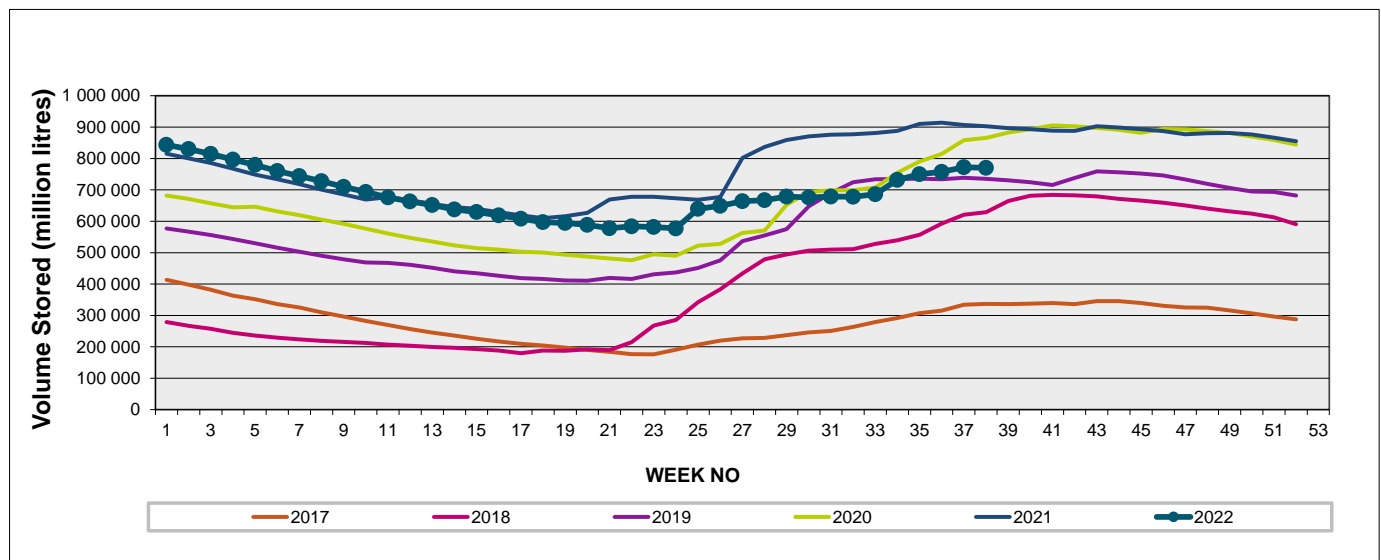
Weekly Change **-0.2%**

MAJOR DAMS (WCWSS)	STORAGE						
	CAPACITY	%	%	%	%	%	%
	MI	19 September 2022	Previous week	2021	2020	2019	2018
BERG RIVER	130 010	100.0	100.2	100.0	100.4	99.5	99.7
STEENBRAS LOWER	33 517	92.2	94.4	99.3	100.6	99.8	89.3
STEENBRAS UPPER	31 767	95.8	95.5	97.4	99.3	86.5	95.2
THEEWATERSKLOOF	480 188	85.2	85.7	101.0	97.7	72.3	53.9
VOËLVLEI	164 095	72.5	72.0	100.9	96.2	88.6	84.6
WEMMERSHOEK	58 644	86.5	85.8	99.7	96.6	91.4	92.8
TOTAL STORED	898 221	770 284	772 239	903 028	879 404	736 574	641 868
% STORAGE		85.8%	86.0%	100.5%	97.9%	82.0%	71.5%

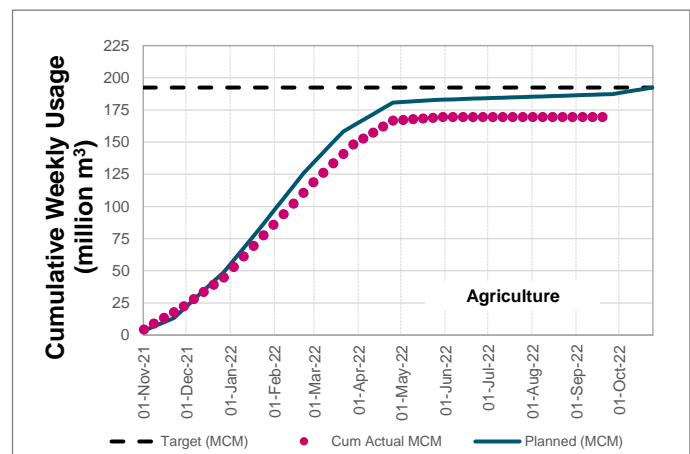
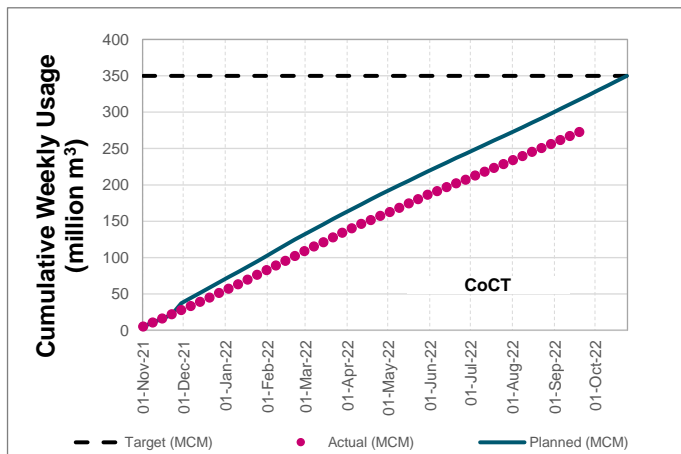
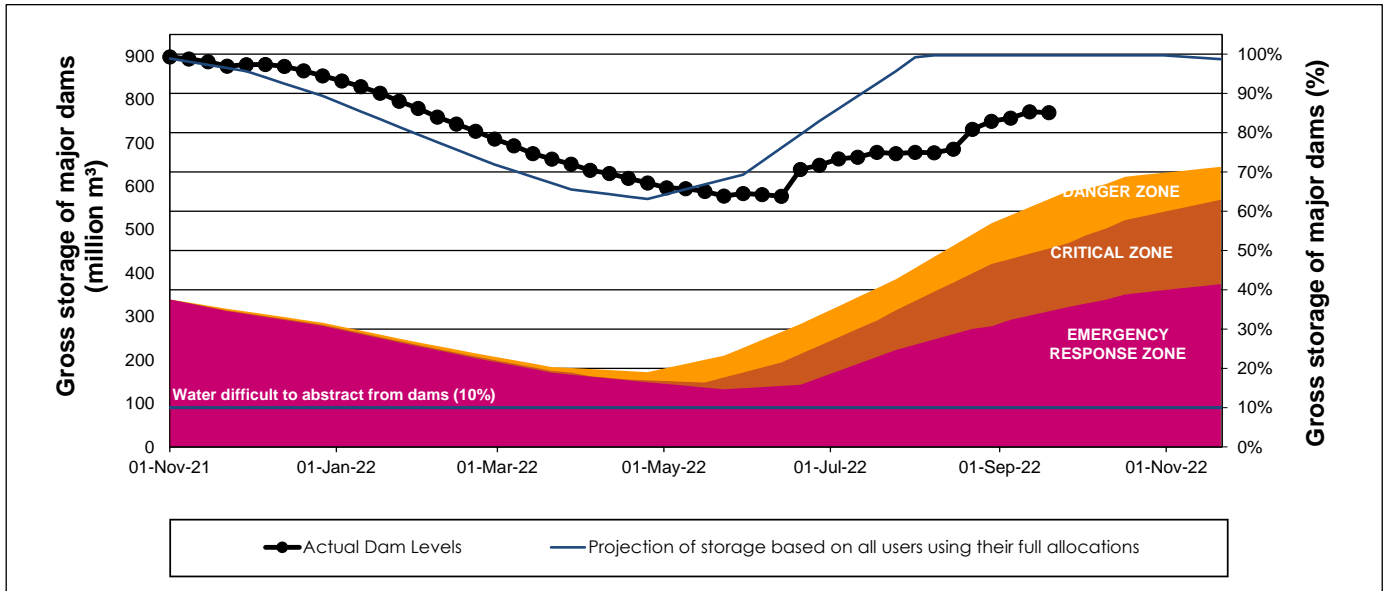
WCWSS Storage Record (2008 - Present)



WCWSS Comparative Storage Graph



WCWSS Dam Storage and Water Use Tracking



Water Stored in Minor Dams

Overall Percentage Full **82.7**

Weekly Change **-2.77**

MINOR DAMS	STORAGE						
	CAPACITY	%	%	%	%	%	%
	MI	19 September 2022	Previous week	2021	2020	2019	2018
ALEXANDRA (Table Mountain)	126	92.9	98.0	73.3	100.0	53.2	97.0
DE VILLIERS (Table Mountain)	243	89.0	97.9	99.1	100.2	99.8	101.0
HELY-HUTCHINSON (Table Mount)	925	99.8	99.7	99.3	100.3	100.0	100.8
KLEINPLAATS (Simon's Town)	1 368	76.6	75.9	100.0	100.0	82.0	100.0
LAND-EN-ZEEZICHT (Helderberg)	451	87.2	86.8	100.0	92.8	83.2	100.0
LEWIS GAY (Simon's Town)	182	35.5	38.3	97.2	94.5	77.5	93.6
VICTORIA (Table Mountain)	128	99.6	102.3	100.4	100.8	100.0	101.9
WOODHEAD (Table Mountain)	954	79.7	89.9	92.8	99.8	83.0	71.7
Total Stored	4 377	3620.6	3742.0	4208.8	4285.0	3748.9	4054.1
Percentages stored		82.7	85.5	96.2	97.9	85.6	92.6

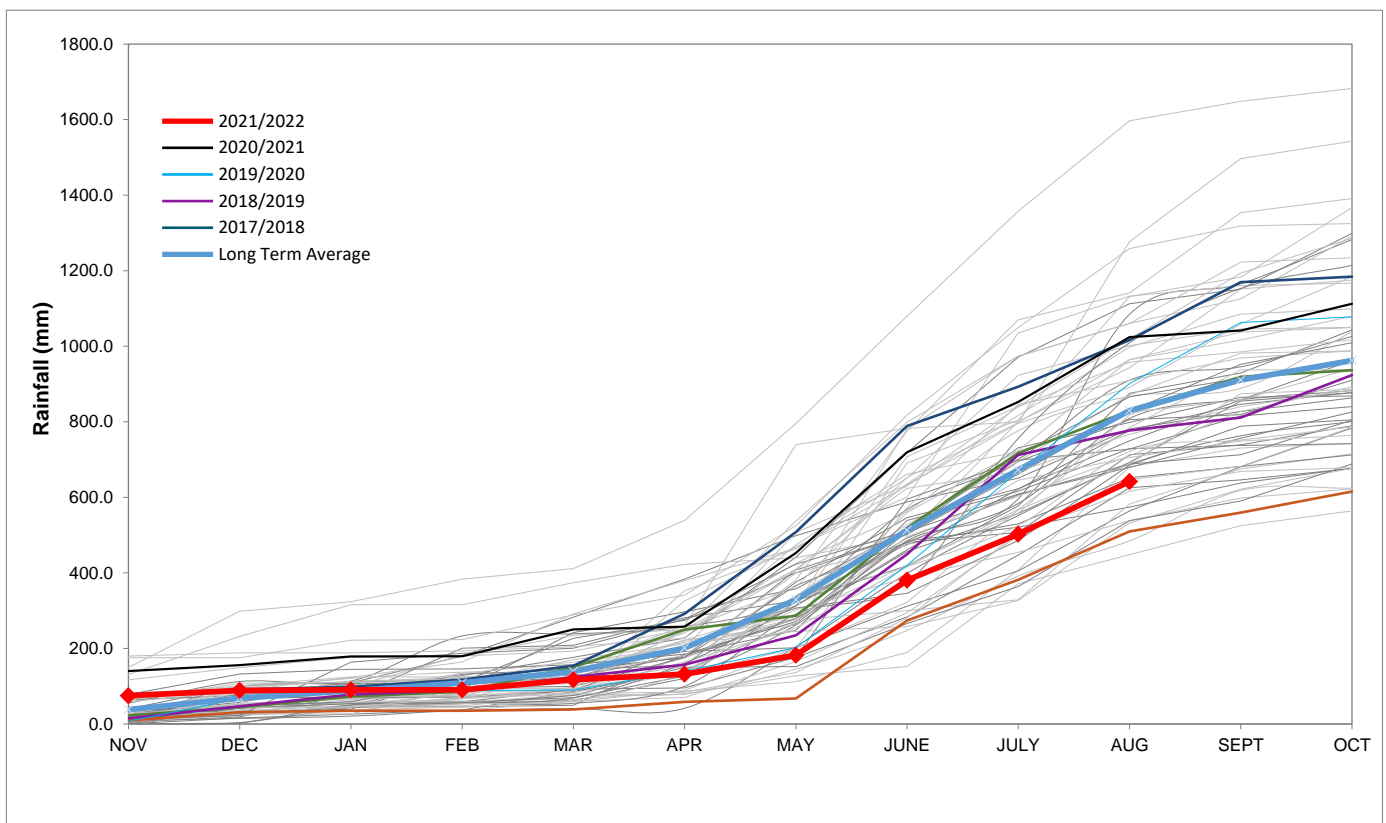
Rainfall Recorded

RAINFALL (mm)	12-Sep	13-Sep	14-Sep	15-Sep	16-Sep	17-Sep	18-Sep	Sep	
								Total*	LT Average
Blackheath Upper	0.0	0.0	0.0	0.0	0.0	0.0	0.0	17.0	43.5
Brooklands	0.0	0.0	0.0	0.0	1.0	0.0	5.0	21.0	85.7
Newlands	0.0	0.0	0.0	0.0	0.0	1.0	1.0	44.0	168.3
Steenbras	0.0	0.0	0.0	0.0	1.2	1.0	0.0	29.4	83.6
Table Mountain (Woodhead)	0.5	0.0	0.0	0.0	0.0	3.0	0.0	42.5	147.2
Theewaterskloof	0.0	0.0	0.0	0.0	0.0	1.3	4.5	28.9	41.1
Tygerberg	0.0	0.0	0.0	0.0	0.0	0.0	0.0	12.9	47.0
Voëlvlei	0.0	0.0	0.0	0.0	0.0	0.0	0.0	17.0	45.1
Wemmershoek	0.0	0.0	0.0	0.0	0.0	0.0	0.0	25.8	90.3
Wynberg	0.0	0.0	0.0	0.0	0.0	0.0	0.0	41.6	97.8

Notes: *Total/cummulative rainfall for month indicated above
LT: Long Term

Accumulated Monthly Rainfall at Wemmershoek

Note: Wemmershoek station used due to long record and mountainous location



Drinking Water Quality

SAMPLE PASS RATE

Month	Water Quality Compliance (%)	Target (%)
Jun-21	99.11	98
Jul-21	99.10	98
Aug-21	99.12	98
Sep-21	99.09	98
Oct-21	99.11	98
Nov-21	99.11	98
Dec-21	99.09	98
Jan-22	99.04	98
Feb-22	99.04	98
Mar-22	98.99	98
Apr-22	98.96	98
May-22	98.90	98
Jun-22	98.96	98
Jul-22	99.46	98.50
Aug-22	99.47	98.50

Notes:

This table shows CCT drinking water quality compliance according to the South African National Standard 241:2015. Compliance, measured against all prescribed chemical and microbiological components, consistently exceeds the very high CCT target of 98%. (Overall compliance percentages of continuous sampling and analysis are released on a monthly basis.)