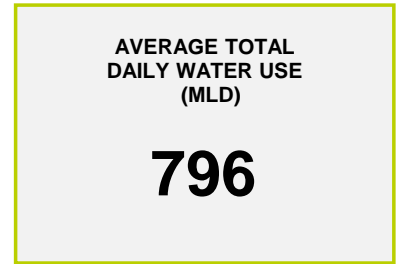
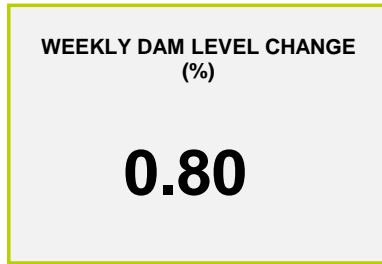
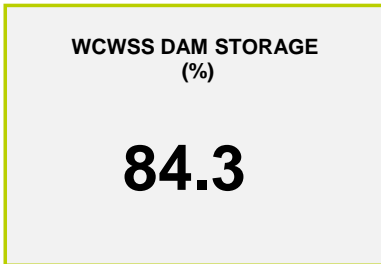
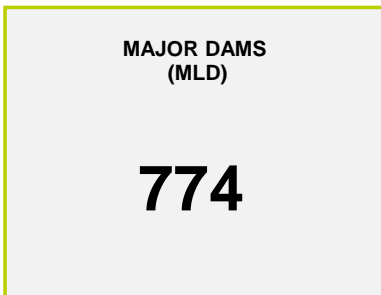




Headline Statistics



Water Production from Different Sources



Overall Water Usage Trend (2010 - Present)



WCWSS means Western Cape Water Supply System

MLD means million litres per day

More information on Water Saving and Restrictions is available on the City of Cape Town's 'ThinkWater' website

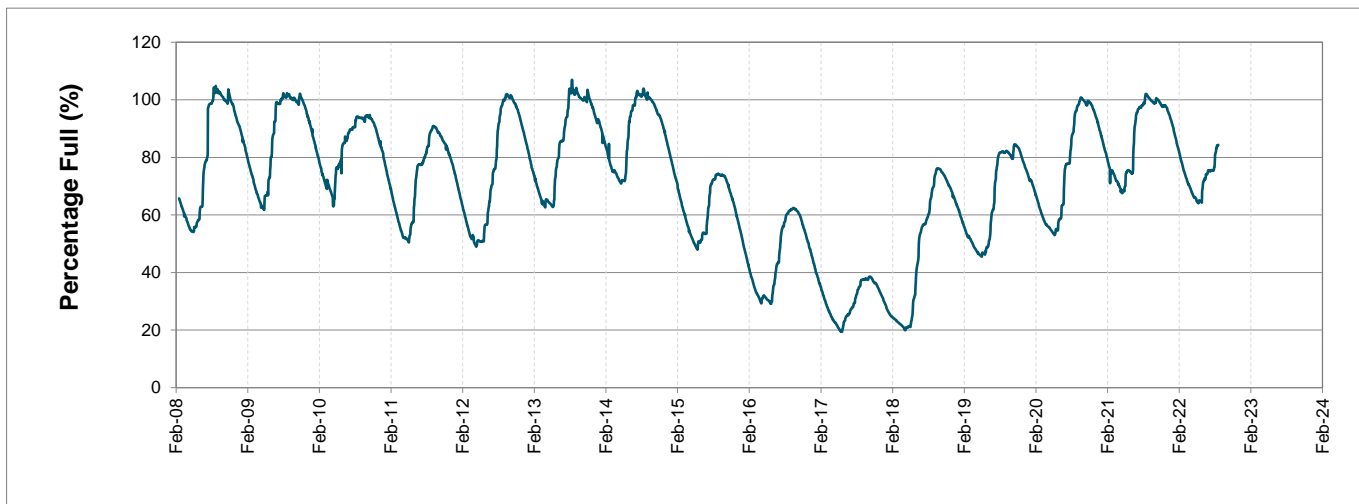
Water Stored in Major Dams (WCWSS)

Overall Percentage Full **84.3%**

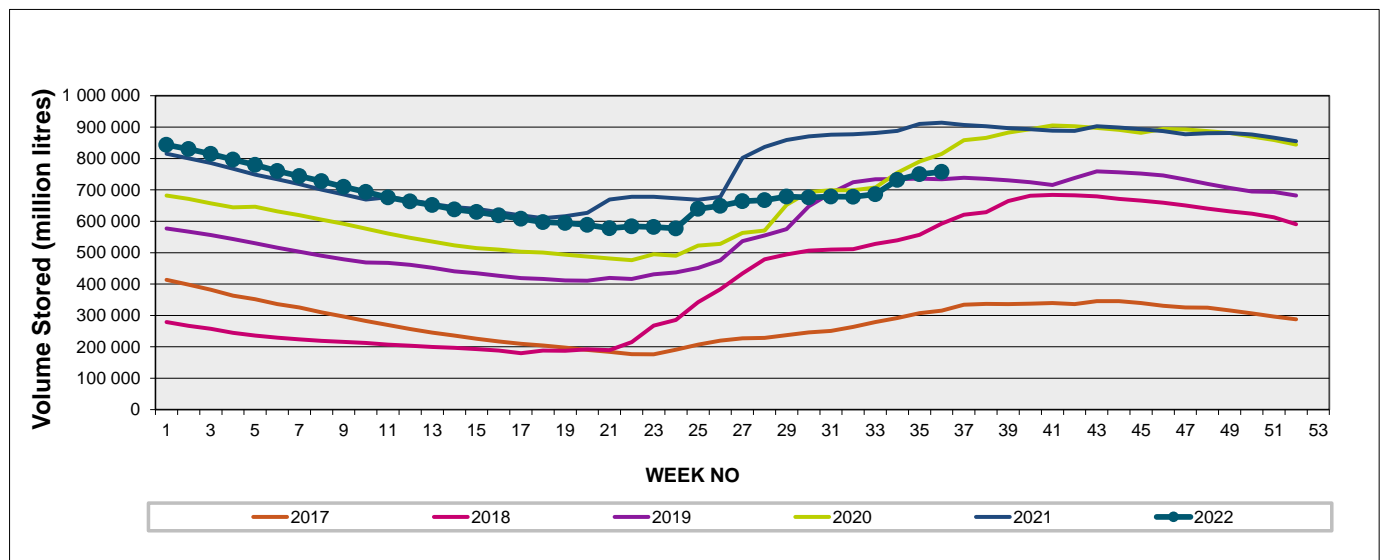
Weekly Change **0.8%**

MAJOR DAMS (WCWSS)	STORAGE						
	CAPACITY	%	%	%	%	%	%
	MI	05 September 2022	Previous week	2021	2020	2019	2018
BERG RIVER	130 010	100.9	100.4	100.7	101.3	99.1	97.4
STEENBRAS LOWER	33 517	93.9	93.3	101.7	101.3	100.7	87.4
STEENBRAS UPPER	31 767	94.6	92.9	95.2	99.7	90.4	98.6
THEEWATERSKLOOF	480 188	83.4	82.6	103.7	93.9	72.5	49.3
VOËLVLEI	164 095	70.3	69.8	99.8	92.1	88.2	75.0
WEMMERSHOEK	58 644	83.7	81.4	100.0	93.6	89.5	87.9
TOTAL STORED	898 221	757 611	750 052	915 894	854 174	736 840	598 802
% STORAGE		84.3%	83.5%	102.0%	95.1%	82.0%	66.7%

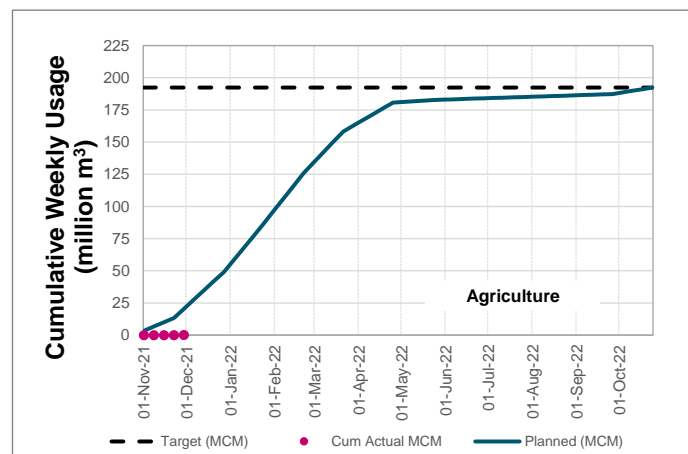
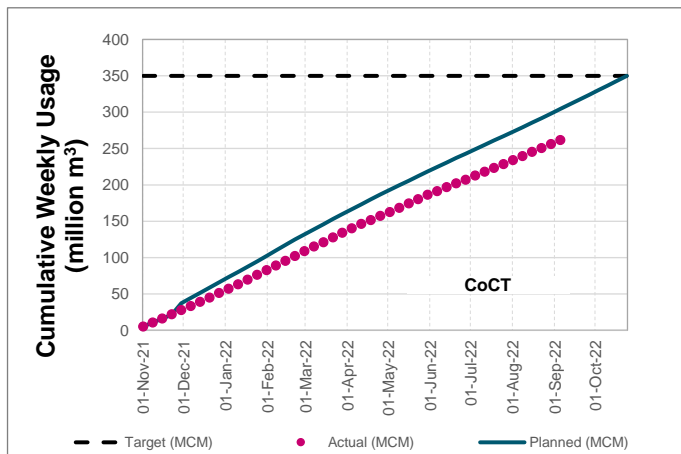
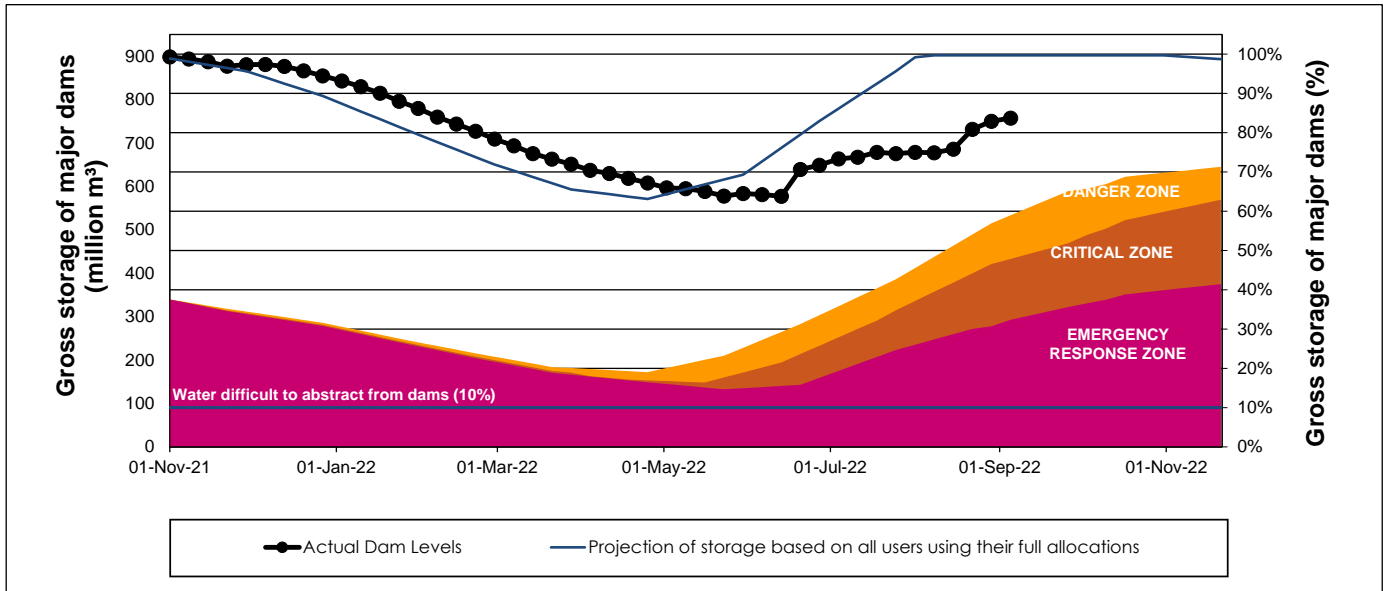
WCWSS Storage Record (2008 - Present)



WCWSS Comparative Storage Graph



WCWSS Dam Storage and Water Use Tracking



Water Stored in Minor Dams

Overall Percentage Full **85.7**

Weekly Change **-1.02**

MINOR DAMS	STORAGE						
	CAPACITY	%	%	%	%	%	%
	MI	05 September 2022	Previous week	2021	2020	2019	2018
ALEXANDRA (Table Mountain)	126	98.7	98.7	68.9	100.0	54.4	97.3
DE VILLIERS (Table Mountain)	243	98.4	99.8	100.2	100.7	100.0	100.2
HELY-HUTCHINSON (Table Mount)	925	99.0	100.8	101.0	101.4	99.7	100.3
KLEINPLAATS (Simon's Town)	1 368	75.5	72.0	100.0	91.9	83.2	93.6
LAND-EN-ZEEZICHT (Helderberg)	451	85.7	85.2	100.0	89.8	78.1	100.0
LEWIS GAY (Simon's Town)	182	41.3	43.6	100.9	100.9	85.7	82.6
VICTORIA (Table Mountain)	128	100.4	101.2	100.8	101.9	101.2	100.4
WOODHEAD (Table Mountain)	954	92.1	99.2	99.9	100.0	76.6	65.8
Total Stored	4 377	3751.5	3796.3	4296.1	4190.9	3693.0	3888.1
Percentages stored		85.7	86.7	98.2	95.7	84.4	88.8

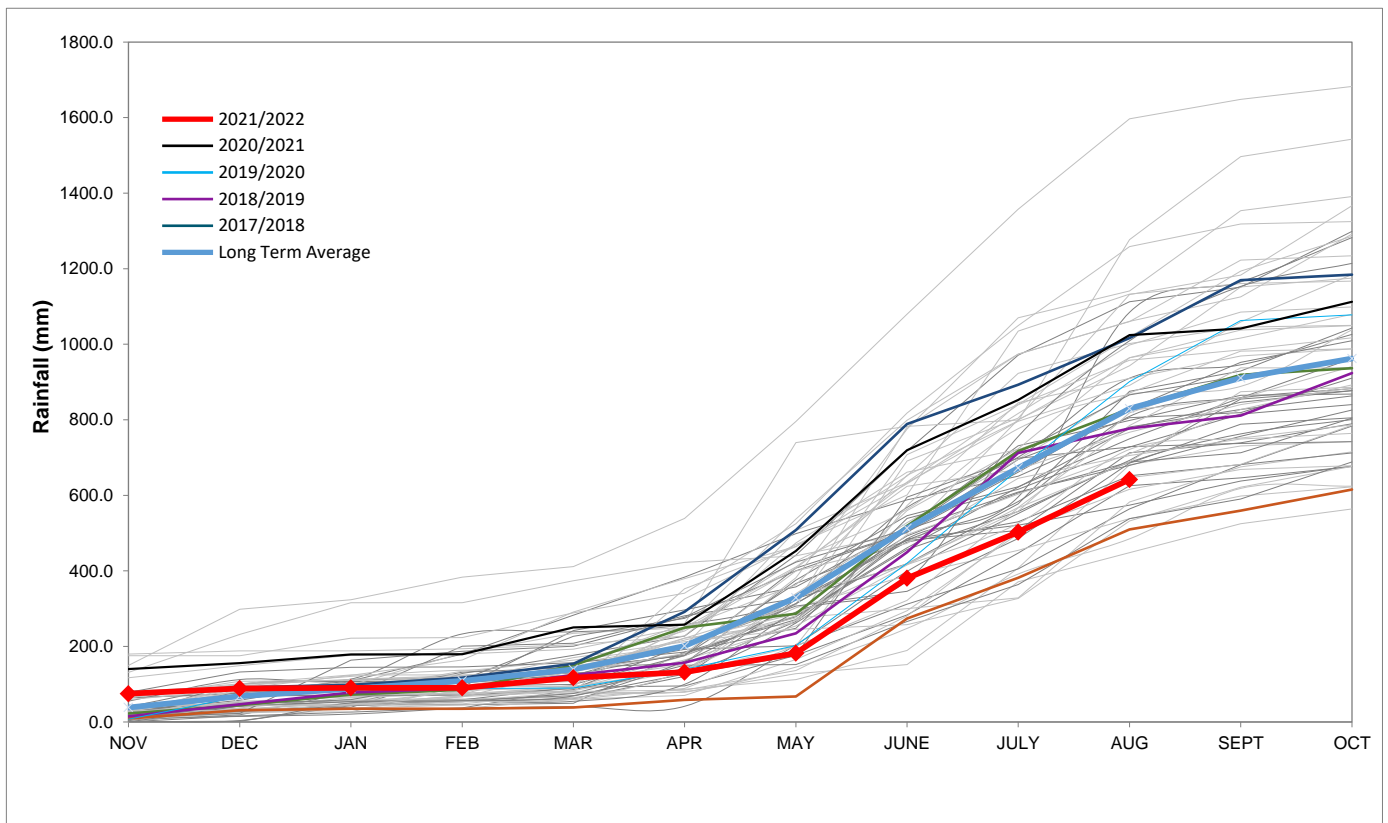
Rainfall Recorded

RAINFALL (mm)	29-Aug	30-Aug	31-Aug	01-Sep	02-Sep	03-Sep	04-Sep	Sep	
								Total*	LT Average
Blackheath Upper	0.0	0.0	0.0	0.0	0.0	0.0	17.0	17.0	43.5
Brooklands	0.0	0.0	0.0	0.0	0.0	0.0	12.0	12.0	85.7
Newlands	2.0	0.0	0.0	0.0	2.0	1.0	30.0	33.0	168.3
Steenbras	1.0	0.0	0.0	0.0	0.0	0.0	14.8	14.8	83.6
Table Mountain (Woodhead)	8.0	0.0	0.0	0.0	0.0	2.5	0.0	2.5	147.2
Theewaterskloof	2.7	0.0	0.0	0.0	0.0	0.0	23.1	23.1	41.1
Tygerberg	0.0	0.0	0.0	0.0	0.0	0.0	0.4	12.5	47.0
Voëlvlei	0.0	0.0	0.0	0.0	0.0	0.0	12.5	12.5	45.1
Wemmershoek	0.0	0.0	0.0	0.0	0.0	0.0	25.4	25.4	90.3
Wynberg	2.4	0.0	0.0	0.0	0.0	1.6	40.0	41.6	97.8

Notes: *Total/cummulative rainfall for month indicated above
LT: Long Term

Accumulated Monthly Rainfall at Wemmershoek

Note: Wemmershoek station used due to long record and mountainous location



Drinking Water Quality

SAMPLE PASS RATE

Month	Water Quality Compliance (%)	Target (%)
May-21	98.98	98
Jun-21	99.11	98
Jul-21	99.10	98
Aug-21	99.12	98
Sep-21	99.09	98
Oct-21	99.11	98
Nov-21	99.11	98
Dec-21	99.09	98
Jan-22	99.04	98
Feb-22	99.04	98
Mar-22	98.99	98
Apr-22	98.96	98
May-22	98.90	98
Jun-22	98.96	98
Jul-22	99.46	98

Notes:

This table shows CCT drinking water quality compliance according to the South African National Standard 241:2015. Compliance, measured against all prescribed chemical and microbiological components, consistently exceeds the very high CCT target of 98%. (Overall compliance percentages of continuous sampling and analysis are released on a monthly basis.