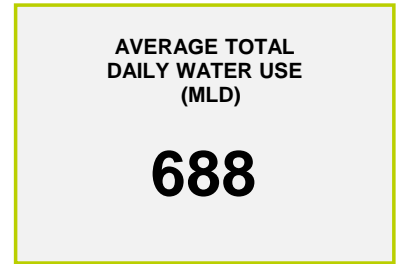
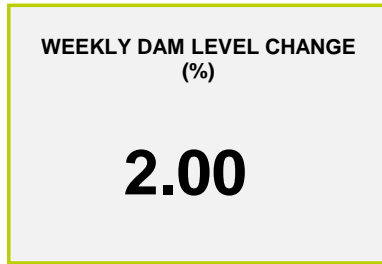
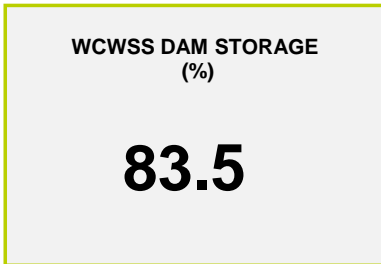




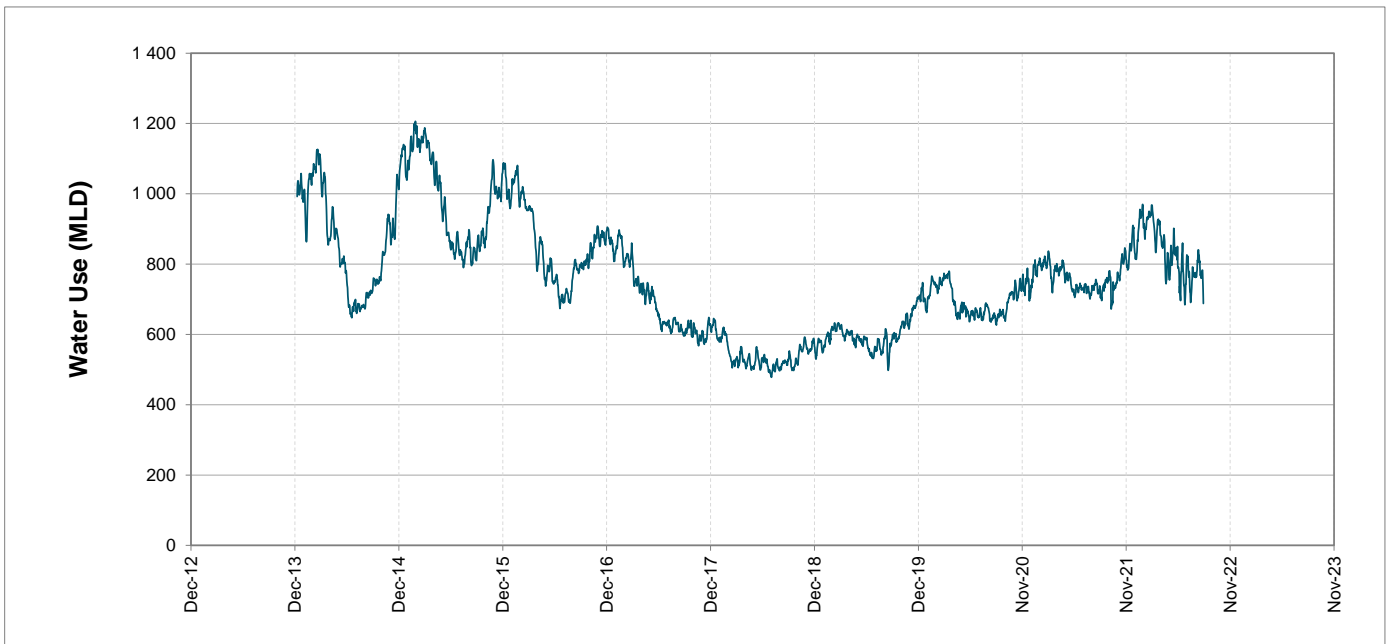
Headline Statistics



Water Production from Different Sources



Overall Water Usage Trend (2010 - Present)



WCWSS means Western Cape Water Supply System

MLD means million litres per day

More information on Water Saving and Restrictions is available on the City of Cape Town's 'ThinkWater' website

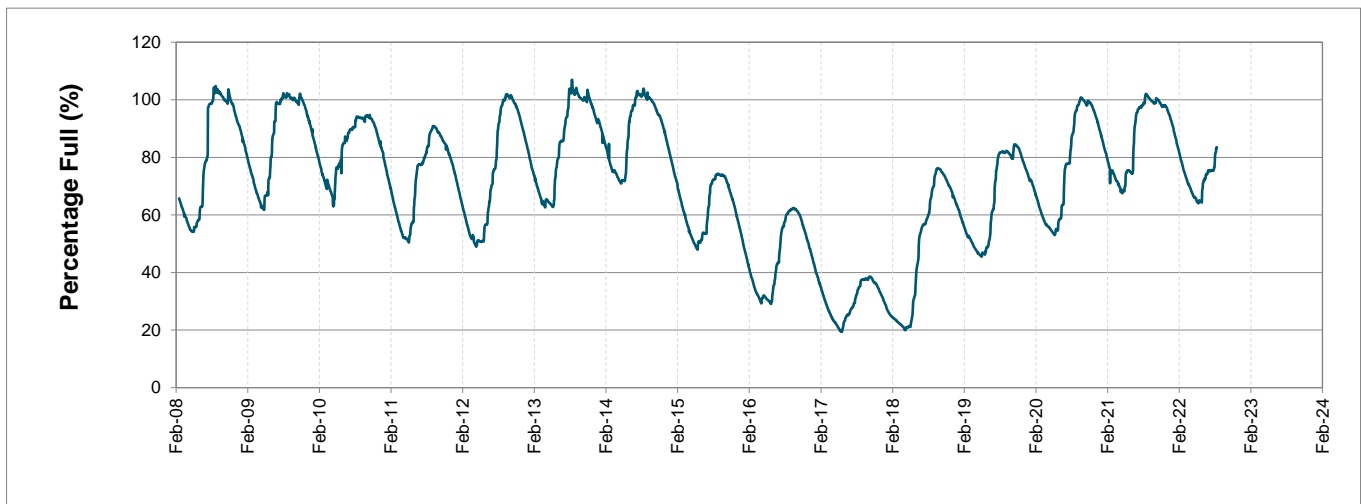
Water Stored in Major Dams (WCWSS)

Overall Percentage Full **83.5%**

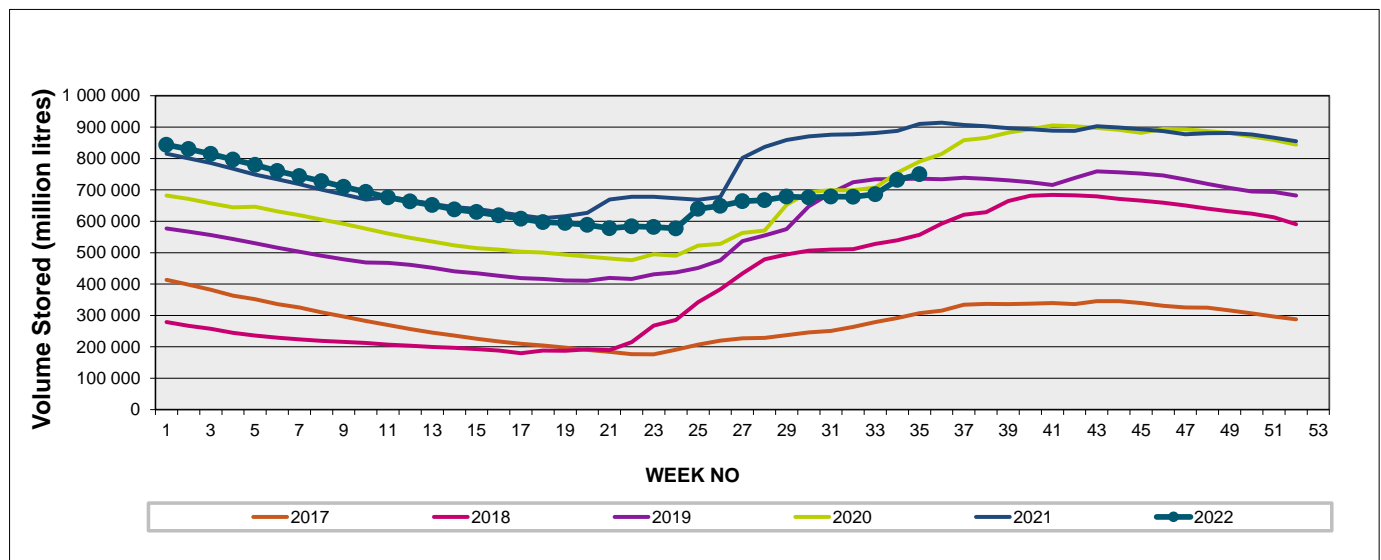
Weekly Change **2.0%**

MAJOR DAMS (WCWSS)	STORAGE						
	CAPACITY	%	%	%	%	%	%
	MI	29 August 2022	Previous week	2021	2020	2019	2018
BERG RIVER	130 010	100.4	98.2	101.5	100.9	99.5	95.9
STEENBRAS LOWER	33 517	93.3	91.4	97.9	97.4	102.0	83.0
STEENBRAS UPPER	31 767	92.9	91.2	92.5	97.2	93.0	103.0
THEEWATERSKLOOF	480 188	82.6	81.0	103.9	86.2	72.2	47.8
VOËLVLEI	164 095	69.8	67.4	95.3	86.0	87.5	69.1
WEMMERSHOEK	58 644	81.4	76.3	100.0	85.7	88.5	86.5
TOTAL STORED	898 221	750 052	731 853	907 835	800 040	735 072	578 866
% STORAGE		83.5%	81.5%	101.1%	89.1%	81.8%	64.4%

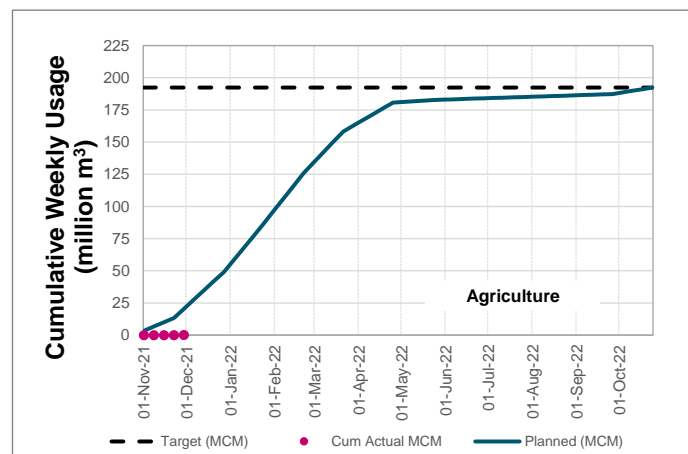
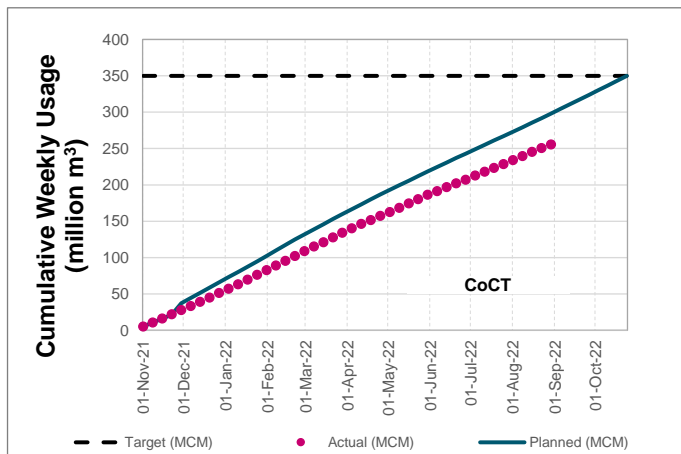
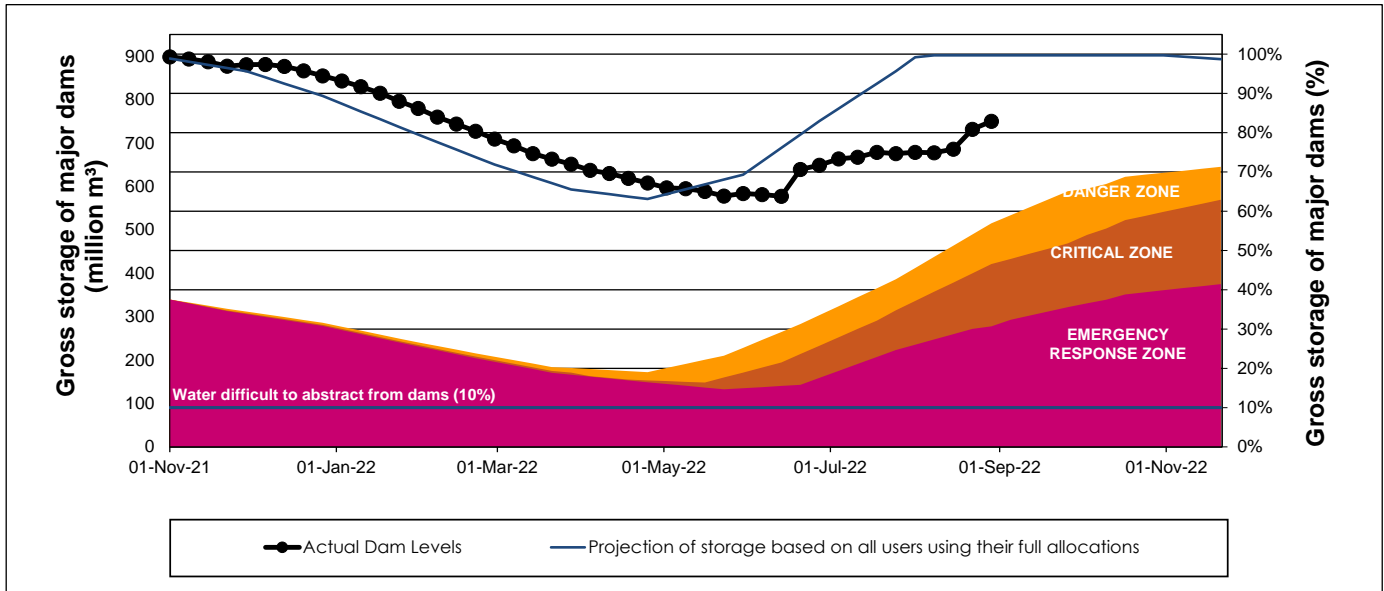
WCWSS Storage Record (2008 - Present)



WCWSS Comparative Storage Graph



WCWSS Dam Storage and Water Use Tracking



Water Stored in Minor Dams

Overall Percentage Full **86.7**

Weekly Change **1.67**

MINOR DAMS	STORAGE						
	CAPACITY	%	%	%	%	%	%
	MI	29 August 2022	Previous week	2021	2020	2019	2018
ALEXANDRA (Table Mountain)	126	98.7	100.0	56.6	100.0	53.9	98.0
DE VILLIERS (Table Mountain)	243	99.8	95.8	95.2	100.9	100.0	100.9
HELY-HUTCHINSON (Table Mount)	925	100.8	100.7	100.8	101.2	100.0	101.4
KLEINPLAATS (Simon's Town)	1 368	72.0	66.8	100.0	85.8	81.2	87.7
LAND-EN-ZEEZICHT (Helderberg)	451	85.2	83.2	100.0	87.7	77.4	100.0
LEWIS GAY (Simon's Town)	182	43.6	44.2	100.9	100.9	88.2	73.0
VICTORIA (Table Mountain)	128	101.2	105.3	100.8	100.8	100.4	103.0
WOODHEAD (Table Mountain)	954	99.2	99.9	100.3	101.0	78.0	64.6
Total Stored	4 377	3796.3	3723.2	4269.9	4108.5	3682.7	3798.6
Percentages stored		86.7	85.1	97.6	93.9	84.1	86.8

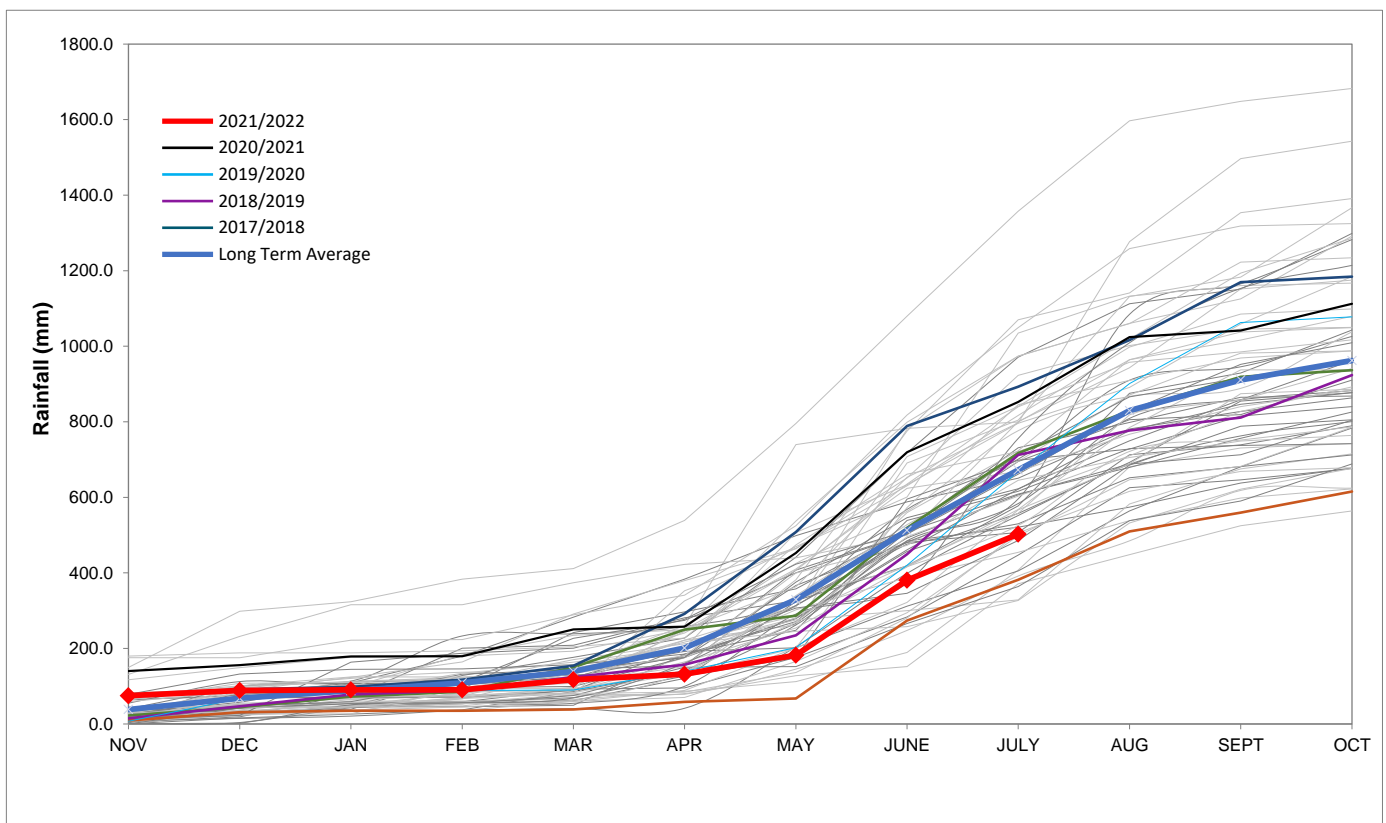
Rainfall Recorded

RAINFALL (mm)	22-Aug	23-Aug	24-Aug	25-Aug	26-Aug	27-Aug	28-Aug	Aug	
								Total*	LT Average
Blackheath Upper	0.0	0.0	4.0	0.0	2.0	0.0	0.0	61.7	77.7
Brooklands	0.0	0.0	3.0	2.0	0.0	3.0	3.0	93.0	135.1
Newlands	0.0	0.0	3.5	5.2	20.0	5.0	0.0	208.4	237.0
Steenbras	0.0	0.0	5.5	0.0	6.0	0.0	0.0	140.3	127.1
Table Mountain (Woodhead)	0.0	0.0	0.0	8.0	0.0	16.0	0.0	152.5	215.8
Theewaterskloof	0.0	0.0	3.8	0.0	0.0	0.0	0.0	67.8	76.0
Tygerberg	0.0	0.0	2.1	0.0	1.6	0.0	0.0	50.9	86.5
Voëlviel	0.0	0.0	4.0	10.0	0.0	4.0	0.0	86.2	90.2
Wemmershoek	0.0	0.0	22.4	13.5	0.0	0.0	0.0	139.2	146.0
Wynberg	0.0	0.0	8.0	3.0	0.0	0.0	0.0	115.7	191.1

Notes: *Total/cummulative rainfall for month indicated above
LT: Long Term

Accumulated Monthly Rainfall at Wemmershoek

Note: Wemmershoek station used due to long record and mountainous location



Drinking Water Quality

SAMPLE PASS RATE

Month	Water Quality Compliance (%)	Target (%)
May-21	98.98	98
Jun-21	99.11	98
Jul-21	99.10	98
Aug-21	99.12	98
Sep-21	99.09	98
Oct-21	99.11	98
Nov-21	99.11	98
Dec-21	99.09	98
Jan-22	99.04	98
Feb-22	99.04	98
Mar-22	98.99	98
Apr-22	98.96	98
May-22	98.90	98
Jun-22	98.96	98
Jul-22	99.46	98

Notes:

This table shows CCT drinking water quality compliance according to the South African National Standard 241:2015. Compliance, measured against all prescribed chemical and microbiological components, consistently exceeds the very high CCT target of 98%. (Overall compliance percentages of continuous sampling and analysis are released on a monthly basis.