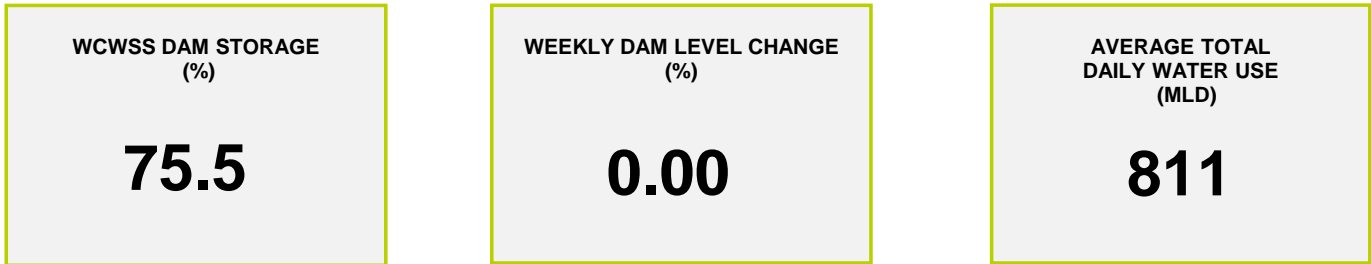




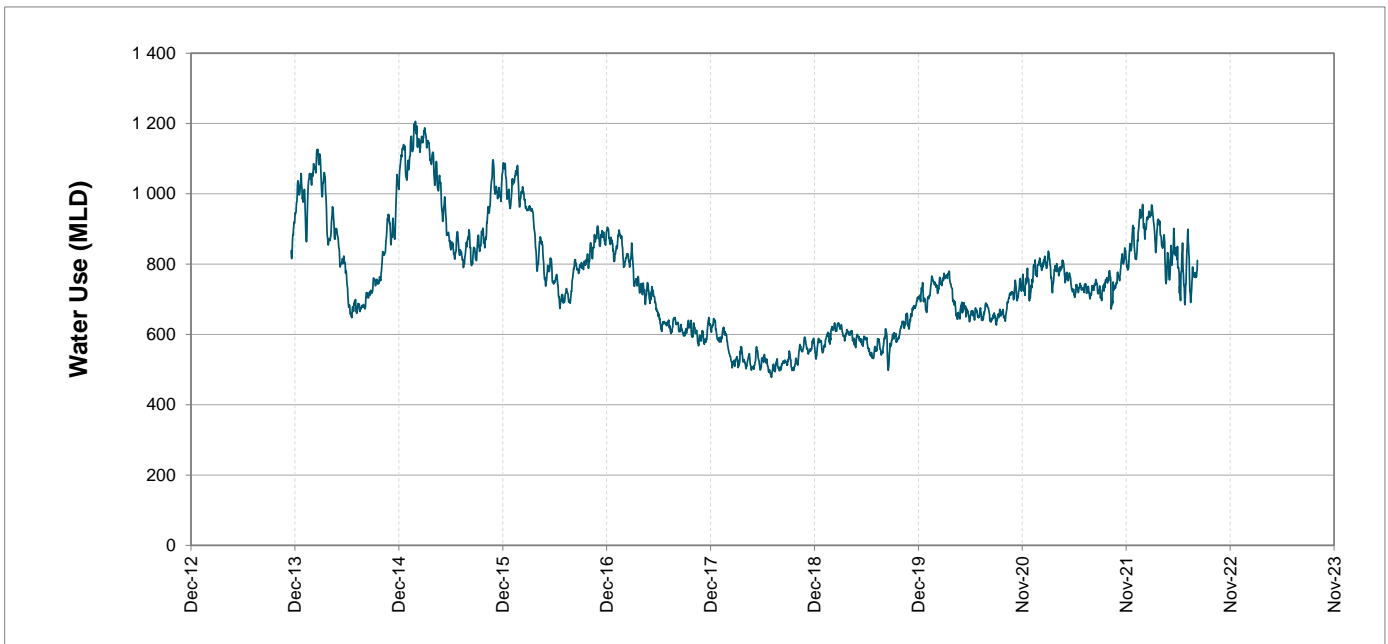
## Headline Statistics



## Water Production from Different Sources



## Overall Water Usage Trend (2010 - Present)



WCWSS means Western Cape Water Supply System

MLD means million litres per day

More information on Water Saving and Restrictions is available on the City of Cape Town's 'ThinkWater' website

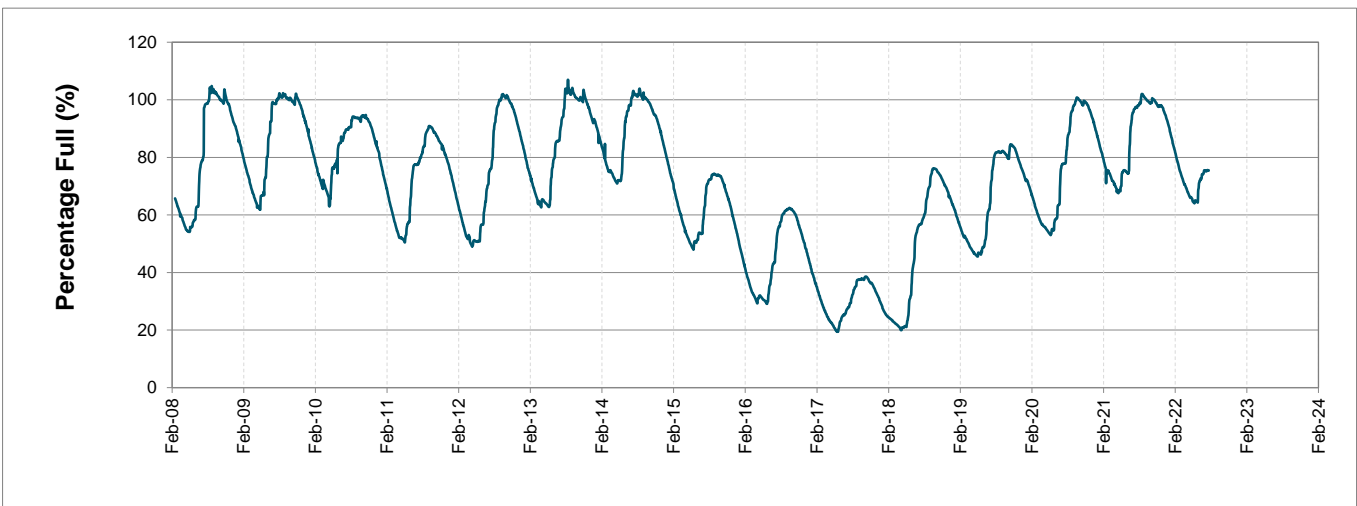
# Water Stored in Major Dams (WCWSS)

Overall Percentage Full **75.5%**

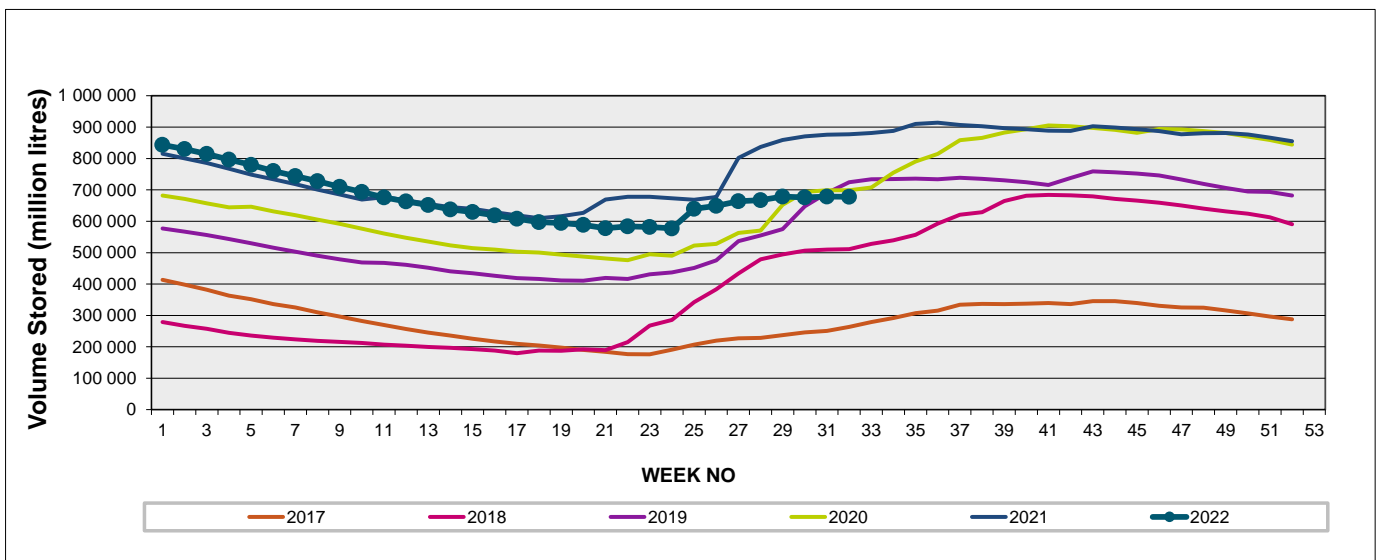
Weekly Change **0.0%**

MAJOR DAMS (WCWSS)	STORAGE						
	CAPACITY	%	%	%	%	%	%
	MI	08 August 2022	Previous week	2021	2020	2019	2018
BERG RIVER	130 010	88.7	88.6	100.1	97.0	101.7	87.6
STEENBRAS LOWER	33 517	78.9	79.2	88.2	77.7	93.8	58.7
STEENBRAS UPPER	31 767	86.1	87.2	85.3	99.3	99.7	92.4
THEEWATERSKLOOF	480 188	76.4	76.7	101.2	73.6	69.3	43.0
VOËLVLEI	164 095	63.1	62.7	87.5	73.5	80.4	60.2
WEMMERSHOEK	58 644	65.2	64.3	97.0	71.5	82.3	83.6
<b>TOTAL STORED</b>	<b>898 221</b>	<b>677 860</b>	<b>678 455</b>	<b>873 133</b>	<b>699 524</b>	<b>708 311</b>	<b>517 240</b>
<b>% STORAGE</b>		<b>75.5%</b>	<b>75.5%</b>	<b>97.2%</b>	<b>77.9%</b>	<b>78.9%</b>	<b>57.6%</b>

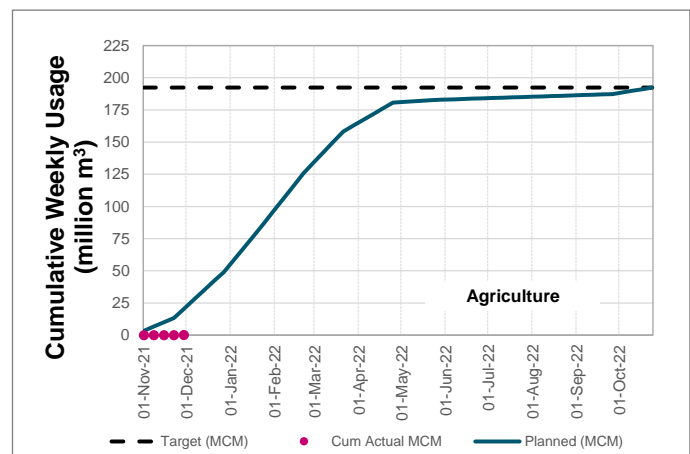
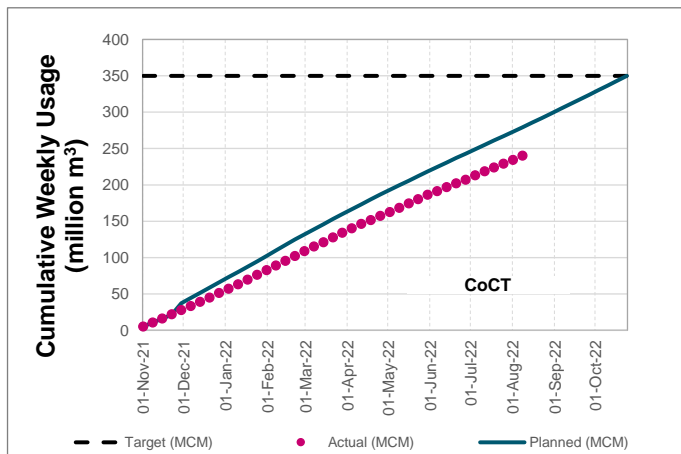
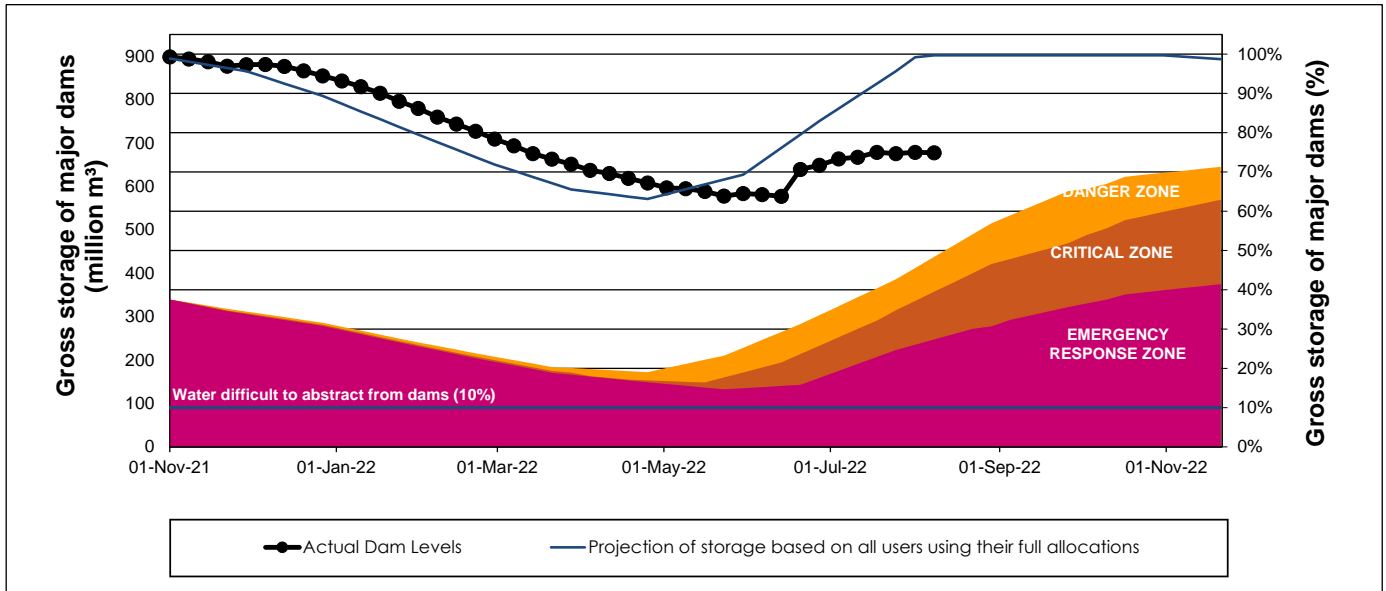
## WCWSS Storage Record (2008 - Present)



## WCWSS Comparative Storage Graph



# WCWSS Dam Storage and Water Use Tracking



## Water Stored in Minor Dams

Overall Percentage Full **72.6**

Weekly Change **-1.56**

MINOR DAMS	STORAGE						
	CAPACITY	%	%	%	%	%	%
	MI	08 August 2022	Previous week	2021	2020	2019	2018
ALEXANDRA (Table Mountain)	126	93.9	96.3	40.5	78.5	39.7	76.0
DE VILLIERS (Table Mountain)	243	87.1	91.7	92.6	100.0	101.0	97.3
HELY-HUTCHINSON (Table Mount)	925	99.8	100.7	99.7	100.3	101.0	100.3
KLEINPLAATS (Simon's Town)	1 368	55.7	54.5	100.0	63.5	72.0	79.2
LAND-EN-ZEEZICHT (Helderberg)	451	77.4	77.5	98.8	77.8	79.1	100.0
LEWIS GAY (Simon's Town)	182	34.8	41.0	100.9	81.4	93.6	65.5
VICTORIA (Table Mountain)	128	100.8	100.0	88.9	98.5	97.0	101.2
WOODHEAD (Table Mountain)	954	67.2	72.6	90.5	99.6	100.6	53.5
<b>Total Stored</b>	<b>4 377</b>	<b>3179.7</b>	<b>3247.9</b>	<b>4116.3</b>	<b>3684.1</b>	<b>3785.2</b>	<b>3519.4</b>
<b>Percentages stored</b>		<b>72.6</b>	<b>74.2</b>	<b>94.0</b>	<b>84.2</b>	<b>86.5</b>	<b>80.4</b>

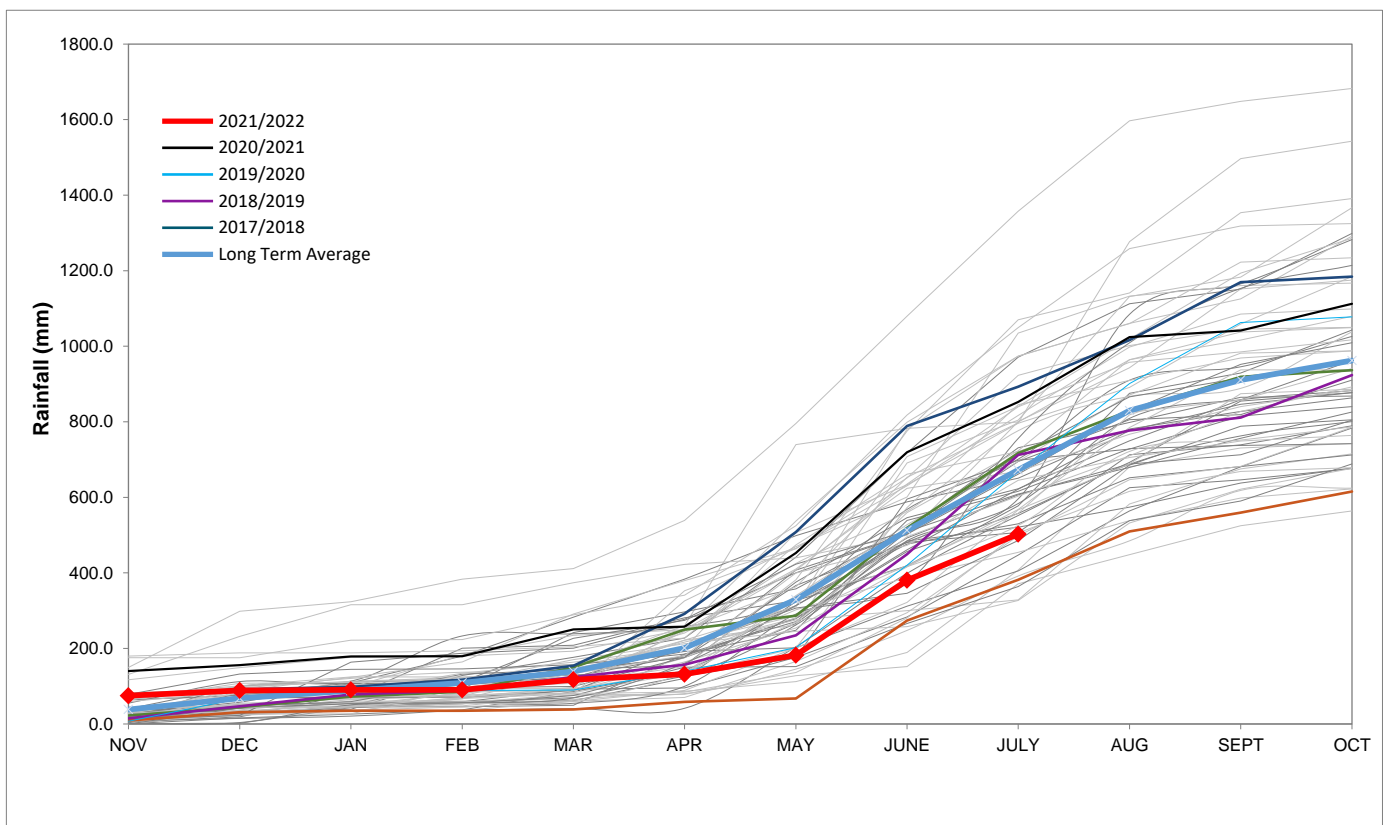
## Rainfall Recorded

RAINFALL (mm)	01-Aug	02-Aug	03-Aug	04-Aug	05-Aug	06-Aug	07-Aug	Aug	
								Total*	LT Average
Blackheath Upper	0.0	0.0	0.0	0.0	0.0	0.0	0.0	0.0	77.7
Brooklands	0.0	0.0	0.0	1.0	0.0	0.0	0.0	1.0	135.1
Newlands	0.0	0.0	0.5	1.5	5.0	0.0	0.0	7.0	237.0
Steenbras	0.0	0.0	0.0	0.0	11.5	0.0	0.0	0.0	127.1
Table Mountain (Woodhead)	0.0	0.0	2.0	4.0	5.0	0.0	0.0	11.0	215.8
Theewaterskloof	0.0	0.0	0.0	0.0	0.0	0.0	0.0	0.0	76.0
Tygerberg	0.0	0.0	0.0	0.0	0.0	0.0	0.0	0.0	86.5
Voëlvele	0.0	0.0	0.0	0.0	0.0	0.0	0.0	0.0	90.2
Wemmershoek	0.0	0.0	0.0	0.0	0.0	0.0	0.0	0.0	146.0
Wynberg	0.0	0.0	0.0	0.8	1.4	0.0	0.0	2.7	191.1

Notes: \*Total/cummulative rainfall for month indicated above  
LT: Long Term

## Accumulated Monthly Rainfall at Wemmershoek

Note: Wemmershoek station used due to long record and mountainous location



## Drinking Water Quality

### SAMPLE PASS RATE

Month	Water Quality Compliance (%)	Target (%)
Apr-21	99.07	98
May-21	98.98	98
Jun-21	99.11	98
Jul-21	99.10	98
Aug-21	99.12	98
Sep-21	99.09	98
Oct-21	99.11	98
Nov-21	99.11	98
Dec-21	99.09	98
Jan-22	99.04	98
Feb-22	99.04	98
Mar-22	98.99	98
Apr-22	98.96	98
May-22	98.90	98
Jun-22	98.96	98

#### Notes:

This table shows CCT drinking water quality compliance according to the South African National Standard 241:2015. Compliance, measured against all prescribed chemical and microbiological components, consistently exceeds the very high CCT target of 98%. (Overall compliance percentages of continuous sampling and analysis are released on a monthly basis.