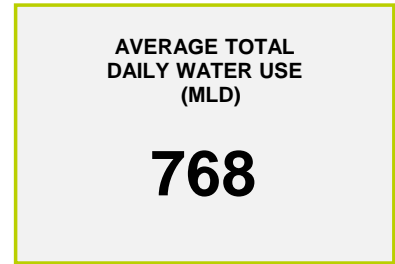
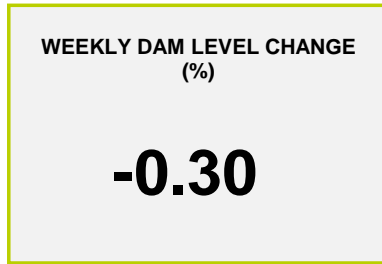
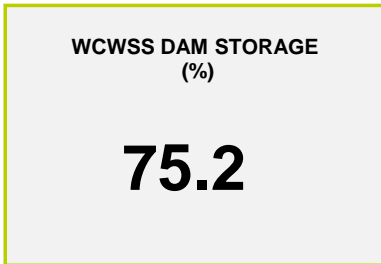




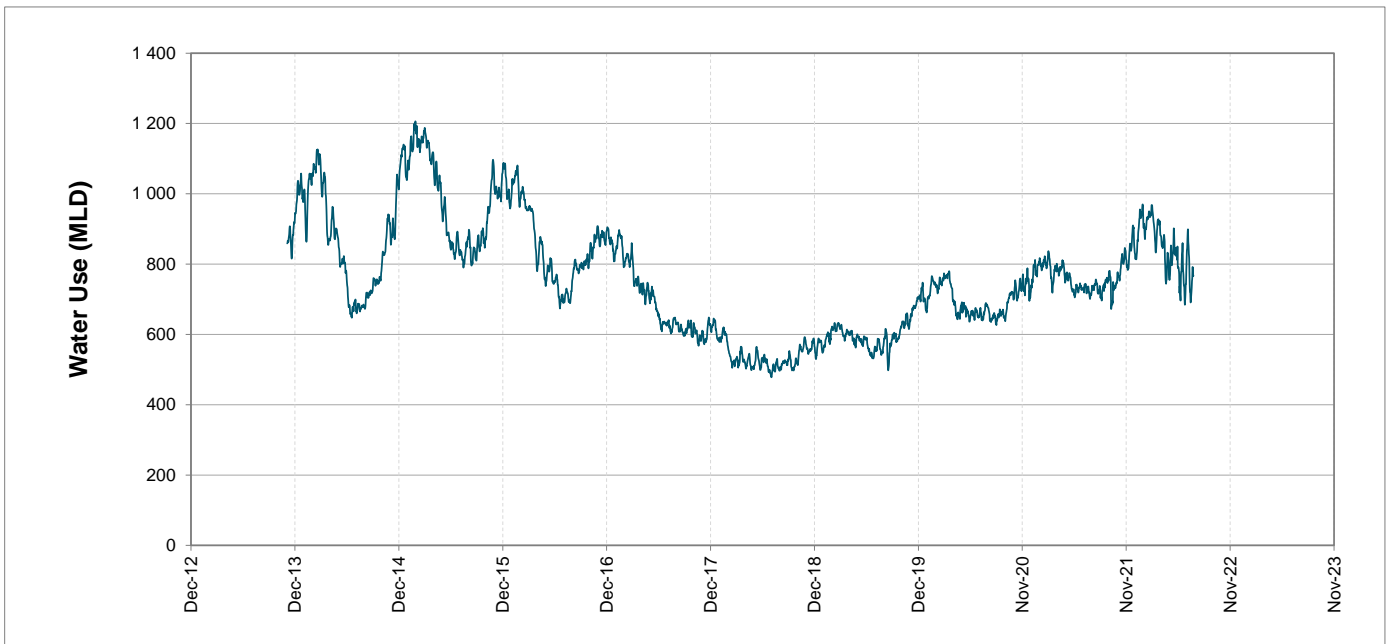
Headline Statistics



Water Production from Different Sources



Overall Water Usage Trend (2010 - Present)



WCWSS means Western Cape Water Supply System

MLD means million litres per day

More information on Water Saving and Restrictions is available on the City of Cape Town's 'ThinkWater' website

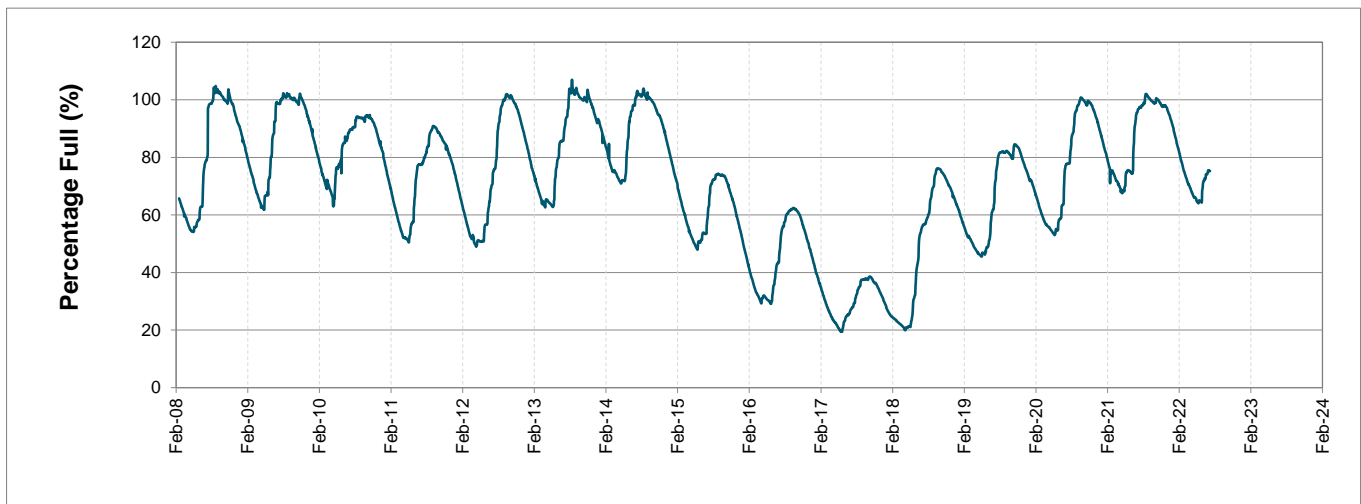
Water Stored in Major Dams (WCWSS)

Overall Percentage Full **75.2%**

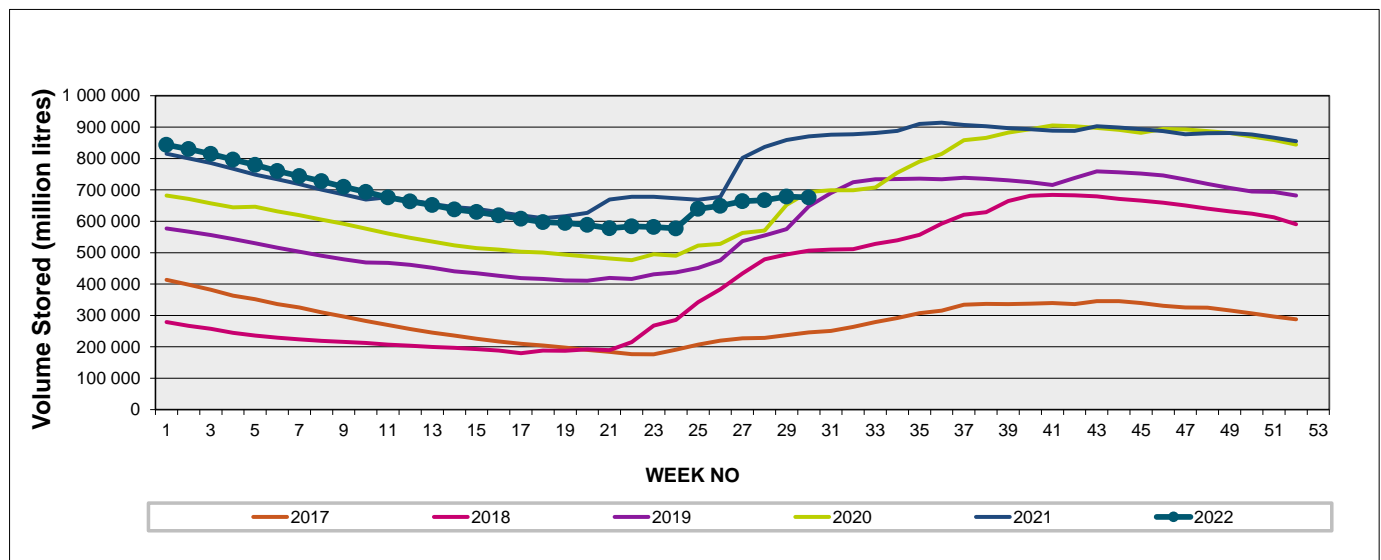
Weekly Change **-0.3%**

MAJOR DAMS (WCWSS)	STORAGE						
	CAPACITY	%	%	%	%	%	%
	MI	25 July 2022	Previous week	2021	2020	2019	2018
BERG RIVER	130 010	88.1	88.2	100.5	97.7	101.8	86.2
STEENBRAS LOWER	33 517	79.0	79.0	86.4	78.4	60.4	58.8
STEENBRAS UPPER	31 767	90.9	93.6	81.8	101.4	100.8	101.3
THEEWATERSKLOOF	480 188	76.3	76.7	102.2	73.3	60.2	41.7
VOËLVLEI	164 095	62.4	62.4	82.8	72.2	70.9	57.6
WEMMERSHOEK	58 644	62.9	62.8	96.1	72.2	67.8	84.6
TOTAL STORED	898 221	675 896	678 553	868 735	698 400	629 834	508 176
% STORAGE		75.2%	75.5%	96.7%	77.8%	70.1%	56.6%

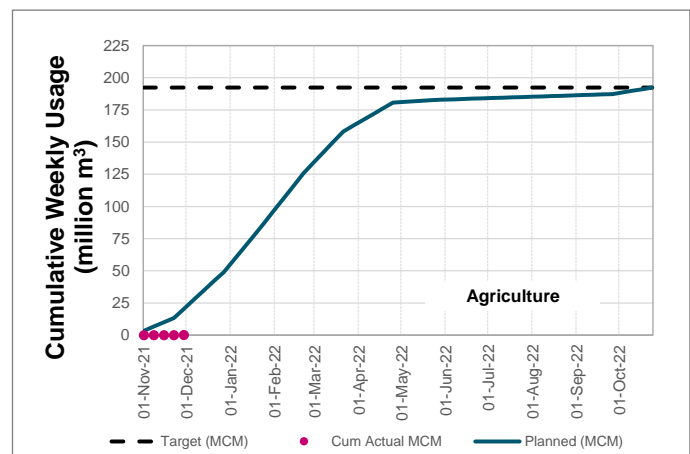
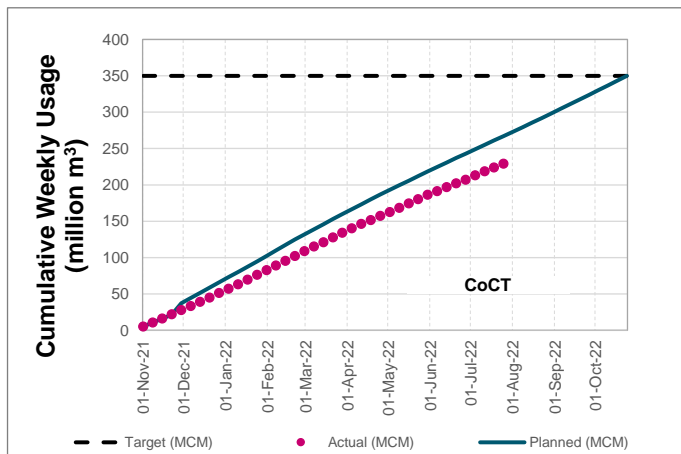
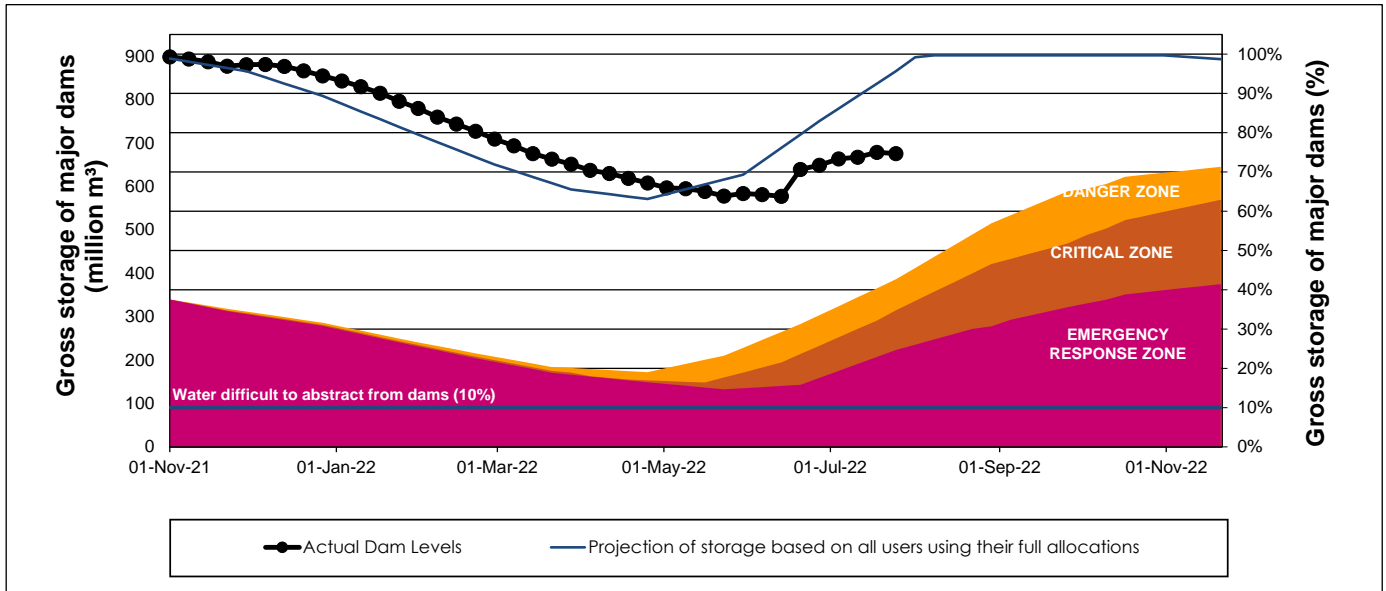
WCWSS Storage Record (2008 - Present)



WCWSS Comparative Storage Graph



WCWSS Dam Storage and Water Use Tracking



Water Stored in Minor Dams

Overall Percentage Full **75.3**

Weekly Change **-2.21**

MINOR DAMS	STORAGE						
	CAPACITY	%	%	%	%	%	%
	MI	25 July 2022	Previous week	2021	2020	2019	2018
ALEXANDRA (Table Mountain)	126	94.9	100.0	38.3	94.3	35.8	80.8
DE VILLIERS (Table Mountain)	243	96.3	99.5	95.3	99.5	100.2	96.7
HELY-HUTCHINSON (Table Mount)	925	100.3	100.5	100.0	99.2	101.0	99.3
KLEINPLAATS (Simon's Town)	1 368	54.2	52.8	90.2	61.9	61.1	77.0
LAND-EN-ZEEZICHT (Helderberg)	451	76.3	77.6	93.5	72.4	81.7	100.0
LEWIS GAY (Simon's Town)	182	46.7	52.5	100.9	96.3	51.9	78.5
VICTORIA (Table Mountain)	128	99.3	102.3	79.9	99.6	85.4	94.6
WOODHEAD (Table Mountain)	954	77.0	85.2	93.7	99.8	91.4	70.9
Total Stored	4 377	3295.0	3391.7	3989.0	3674.5	3475.3	3666.0
Percentages stored		75.3	77.5	91.1	83.9	79.4	83.8

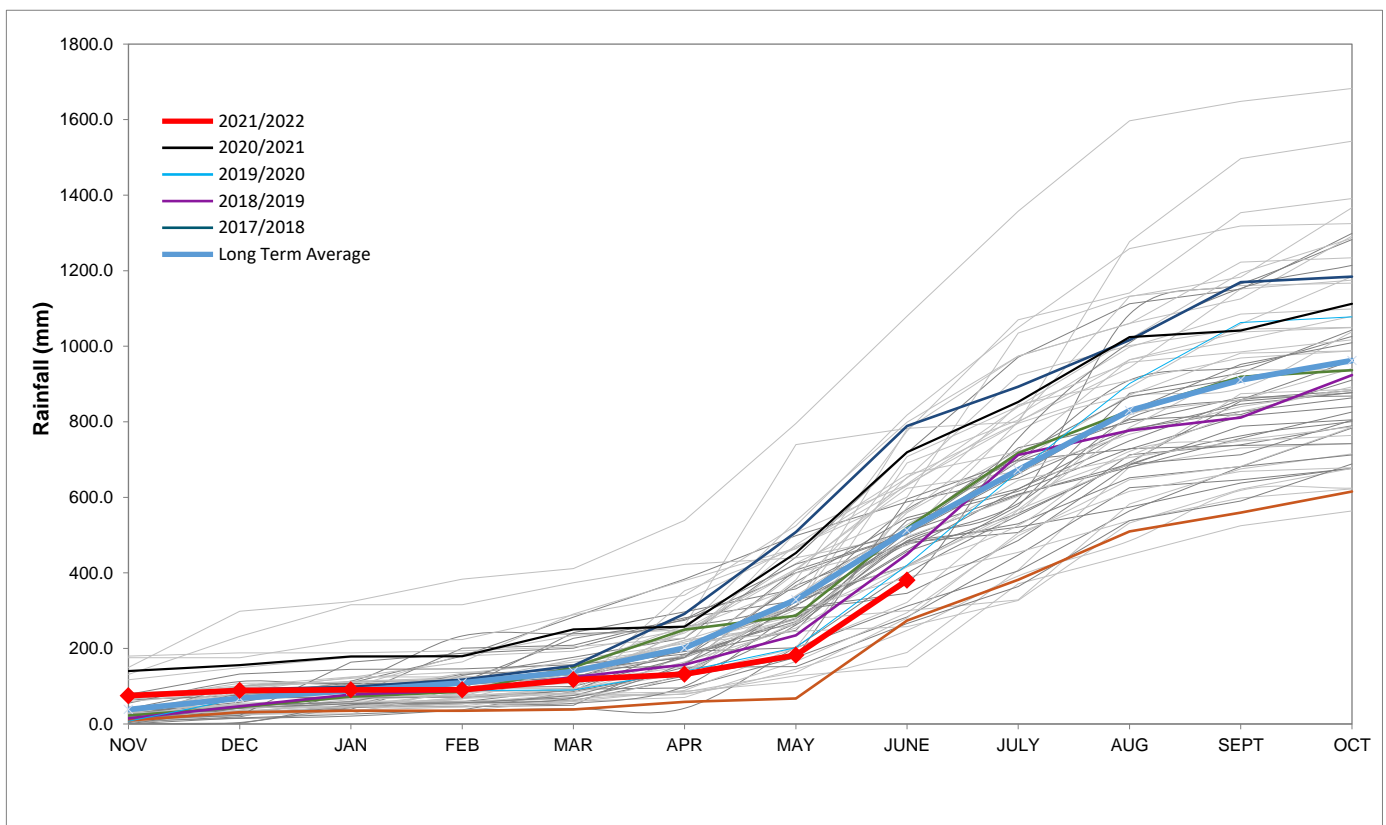
Rainfall Recorded

RAINFALL (mm)	18-Jul	19-Jul	20-Jul	21-Jul	22-Jul	23-Jul	24-Jul	Jul	
								Total*	LT Average
Blackheath Upper	0.0	0.0	0.0	0.0	0.0	0.0	0.0	23.9	78.8
Brooklands	6.0	0.0	0.0	0.0	0.0	4.0	0.0	57.0	132.9
Newlands	3.0	0.0	0.0	0.0	2.0	1.5	0.0	184.8	289.5
Steenbras	0.0	0.0	0.0	0.0	10.0	0.0	0.0	0.0	157.8
Table Mountain (Woodhead)	1.3	0.0	0.0	0.0	9.5	0.0	0.0	133.1	244.5
Theewaterskloof	0.0	1.1	0.0	0.0	1.3	1.4	0.0	22.6	74.2
Tygerberg	0.0	0.0	0.0	0.0	5.0	0.0	0.0	21.1	93.3
Voëlvllei	0.5	0.0	0.0	0.0	2.0	0.8	0.0	29.3	101.1
Wemmershoek	0.0	0.0	0.0	0.0	3.4	1.2	0.0	92.2	172.8
Wynberg	0.0	0.0	0.0	0.0	0.0	0.0	0.0	105.9	186.4

Notes: *Total/cummulative rainfall for month indicated above
LT: Long Term

Accumulated Monthly Rainfall at Wemmershoek

Note: Wemmershoek station used due to long record and mountainous location



Drinking Water Quality

SAMPLE PASS RATE

Month	Water Quality Compliance (%)	Target (%)
Apr-21	99.07	98
May-21	98.98	98
Jun-21	99.11	98
Jul-21	99.10	98
Aug-21	99.12	98
Sep-21	99.09	98
Oct-21	99.11	98
Nov-21	99.11	98
Dec-21	99.09	98
Jan-22	99.04	98
Feb-22	99.04	98
Mar-22	98.99	98
Apr-22	98.96	98
May-22	98.90	98
Jun-22	98.96	98

Notes:

This table shows CCT drinking water quality compliance according to the South African National Standard 241:2015. Compliance, measured against all prescribed chemical and microbiological components, consistently exceeds the very high CCT target of 98%. (Overall compliance percentages of continuous sampling and analysis are released on a monthly basis.)