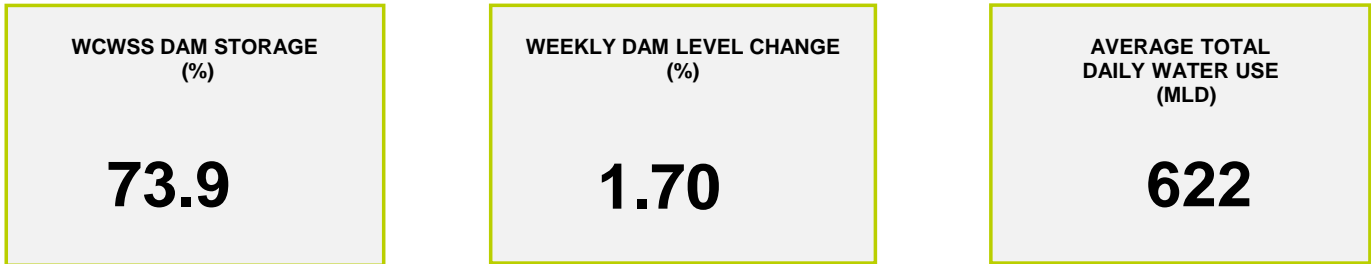
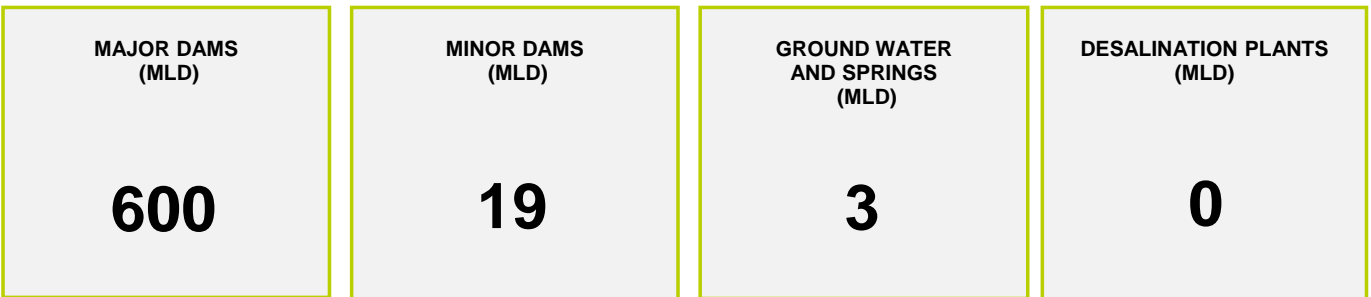




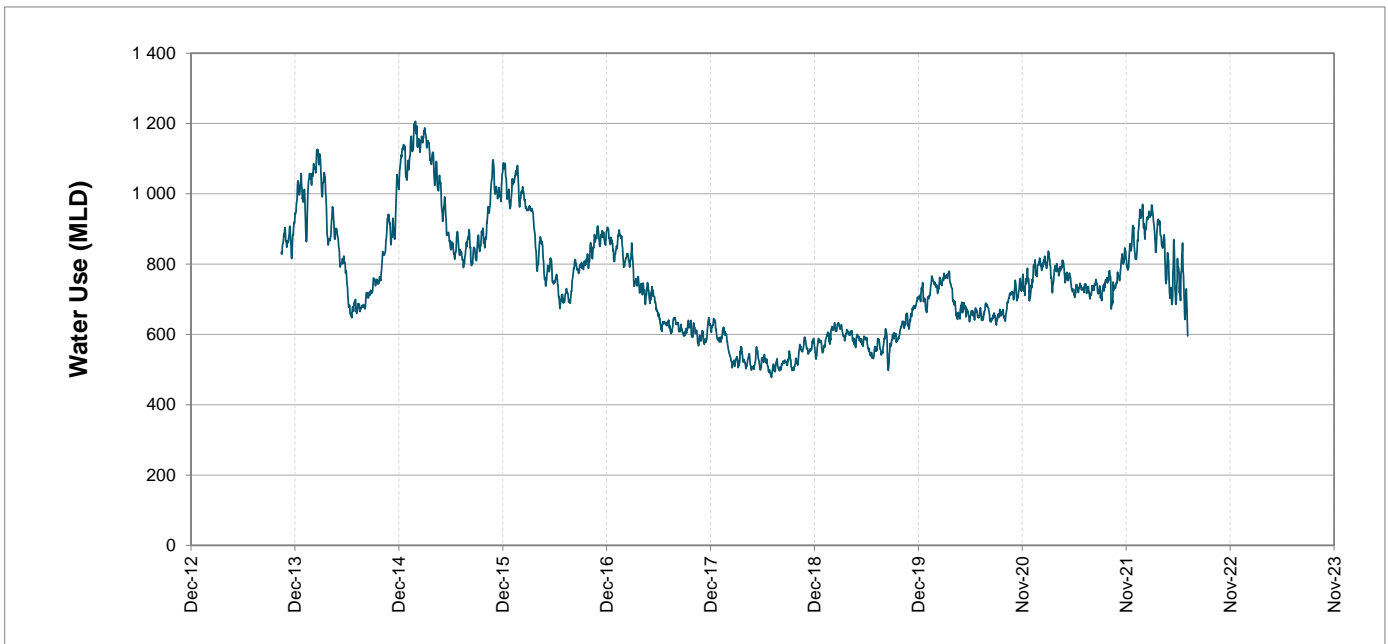
### Headline Statistics



### Water Production from Different Sources



### Overall Water Usage Trend (2010 - Present)



WCWSS means Western Cape Water Supply System

MLD means million litres per day

More information on Water Saving and Restrictions is available on the City of Cape Town's 'ThinkWater' website

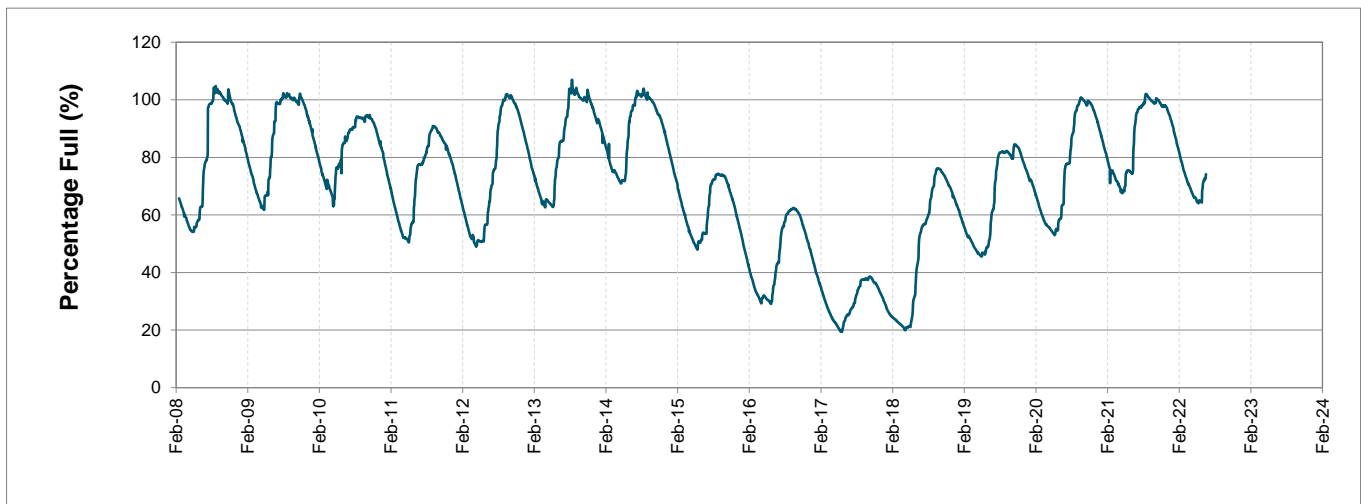
# Water Stored in Major Dams (WCWSS)

Overall Percentage Full **73.9%**

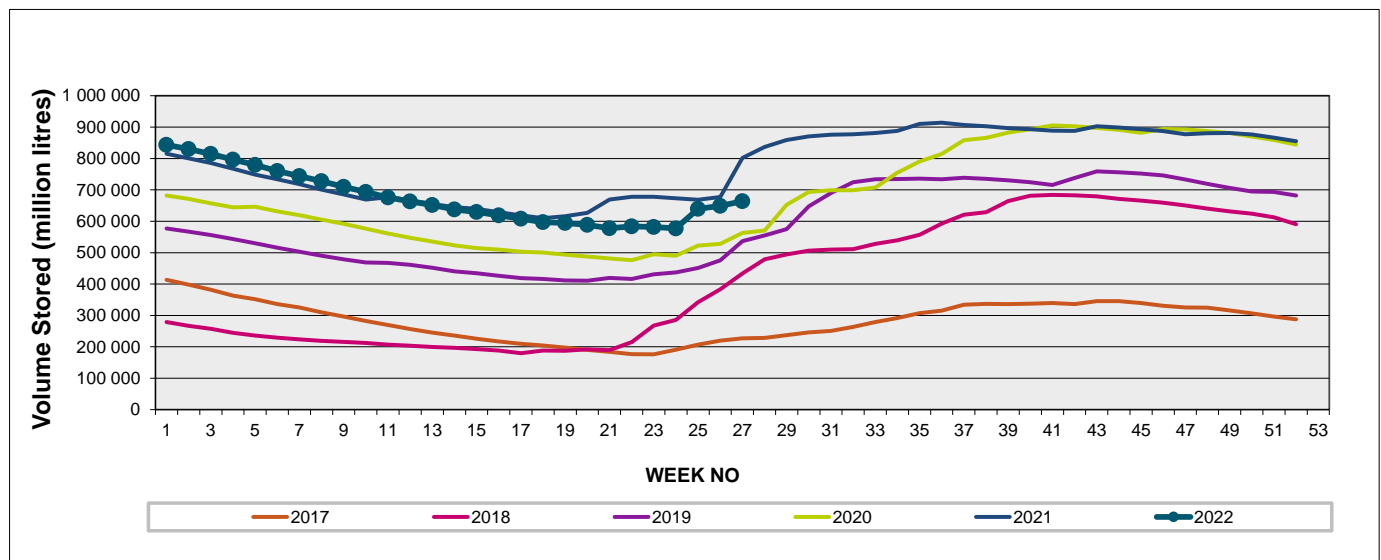
Weekly Change **1.7%**

MAJOR DAMS (WCWSS)	STORAGE						
	CAPACITY	%	%	%	%	%	%
	MI	04 July 2022	Previous week	2021	2020	2019	2018
BERG RIVER	130 010	84.5	79.5	101.5	82.3	86.4	81.1
STEENBRAS LOWER	33 517	79.2	79.2	75.7	55.7	48.4	54.9
STEENBRAS UPPER	31 767	91.7	91.7	70.8	98.8	71.3	101.4
THEEWATERSKLOOF	480 188	75.5	74.3	94.5	59.7	48.3	37.7
VOËLVLEI	164 095	61.2	60.9	67.5	58.6	62.6	46.5
WEMMERSHOEK	58 644	59.4	56.4	85.6	50.3	48.0	81.6
<b>TOTAL STORED</b>	<b>898 221</b>	<b>663 536</b>	<b>648 733</b>	<b>794 506</b>	<b>569 329</b>	<b>514 144</b>	<b>460 949</b>
<b>% STORAGE</b>		<b>73.9%</b>	<b>72.2%</b>	<b>88.5%</b>	<b>63.4%</b>	<b>57.2%</b>	<b>51.3%</b>

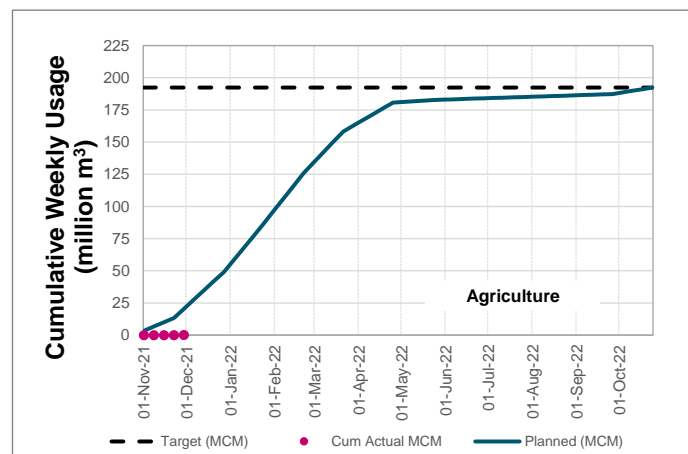
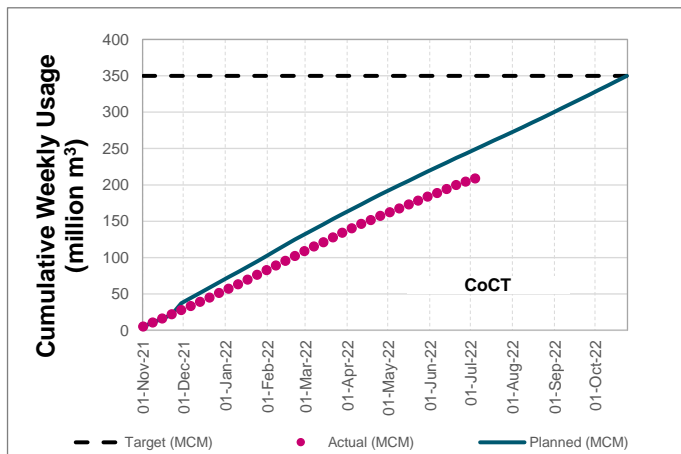
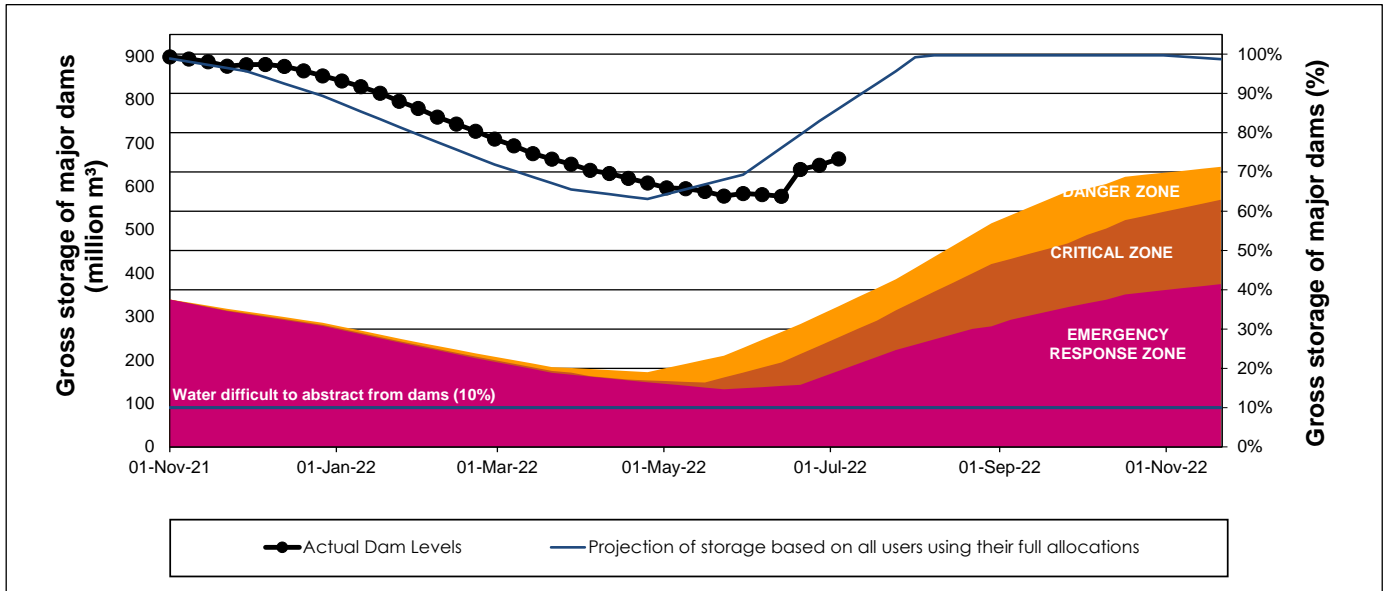
## WCWSS Storage Record (2008 - Present)



## WCWSS Comparative Storage Graph



# WCWSS Dam Storage and Water Use Tracking



## Water Stored in Minor Dams

Overall Percentage Full **66.0**

Weekly Change **-4.36**

MINOR DAMS	STORAGE						
	CAPACITY	%	%	%	%	%	%
	MI	04 July 2022	Previous week	2021	2020	2019	2018
ALEXANDRA (Table Mountain)	126	75.1	75.1	28.0	59.7	22.8	97.3
DE VILLIERS (Table Mountain)	243	97.0	99.5	85.5	100.0	91.9	100.9
HELY-HUTCHINSON (Table Mount)	925	100.3	99.7	102.2	88.7	97.8	101.2
KLEINPLAATS (Simon's Town)	1 368	34.3	43.0	61.9	41.4	42.4	66.8
LAND-EN-ZEEZICHT (Helderberg)	451	80.2	80.3	78.1	71.0	86.9	95.5
LEWIS GAY (Simon's Town)	182	62.6	67.0	100.9	61.1	0.0	100.9
VICTORIA (Table Mountain)	128	100.4	100.8	55.2	100.4	56.5	94.6
WOODHEAD (Table Mountain)	954	59.3	66.6	97.4	99.5	79.8	101.2
<b>Total Stored</b>	<b>4 377</b>	<b>2889.3</b>	<b>3080.0</b>	<b>3535.3</b>	<b>3198.8</b>	<b>2954.3</b>	<b>3888.8</b>
<b>Percentages stored</b>		<b>66.0</b>	<b>70.4</b>	<b>80.8</b>	<b>73.1</b>	<b>67.5</b>	<b>88.8</b>

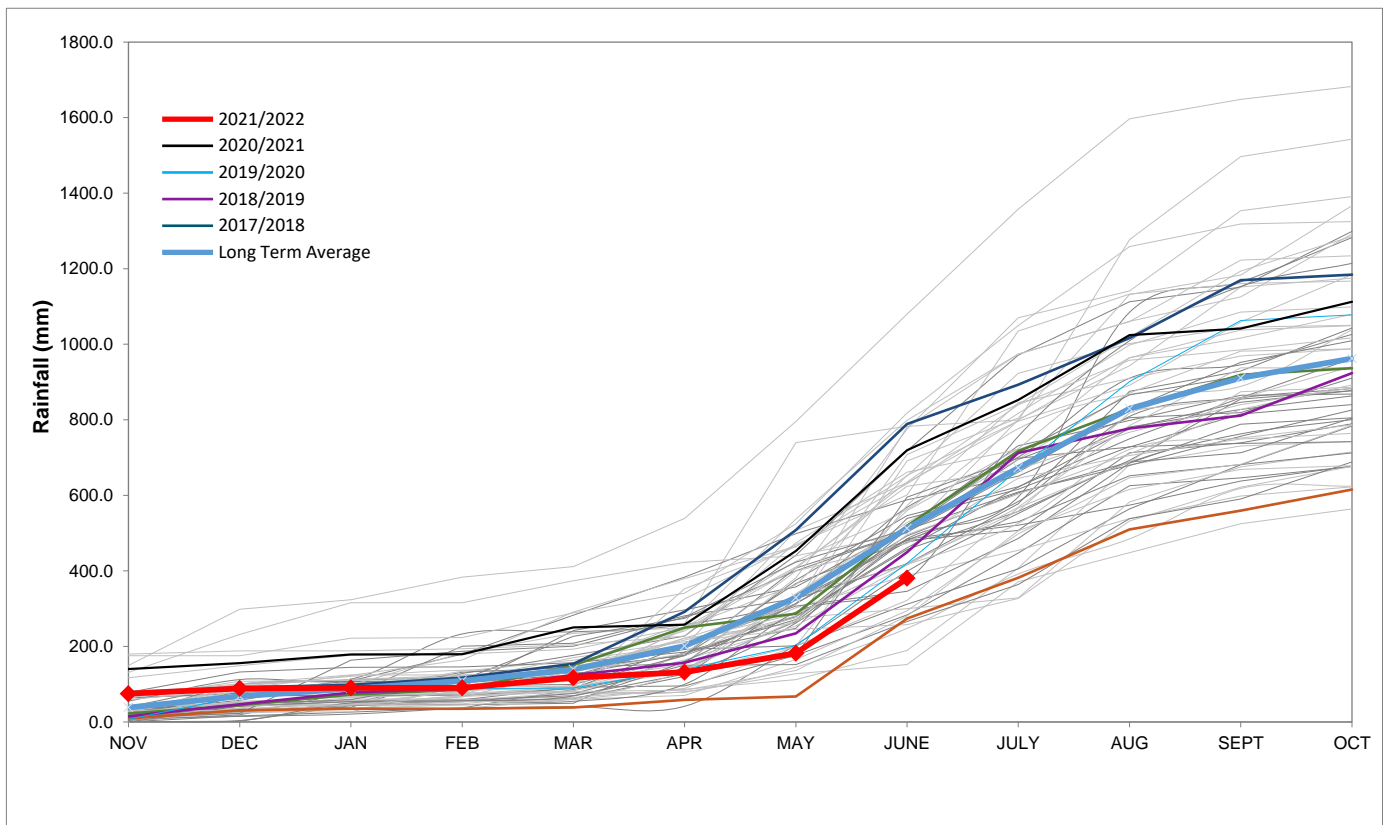
# Rainfall Recorded

RAINFALL (mm)	27-Jun	28-Jun	29-Jun	30-Jun	01-Jul	02-Jul	03-Jul	Jul	
								Total*	LT Average
Blackheath Upper	0.0	0.0	0.0	0.0	0.0	0.0	0.0	0.0	78.8
Brooklands	0.0	0.0	0.0	0.0	0.0	0.0	0.0	0.0	132.9
Newlands	0.0	0.0	0.0	0.0	0.0	0.0	0.0	0.0	289.5
Steenbras	0.0	0.0	0.0	0.0	0.0	0.0	0.0	0.0	157.8
Table Mountain (Woodhead)	0.0	0.0	0.0	0.0	0.0	0.0	0.0	0.0	244.5
Theewaterskloof	0.0	0.0	0.0	0.0	0.0	0.0	0.0	0.0	74.2
Tygerberg	0.0	0.0	0.0	0.0	0.0	0.0	0.0	0.0	93.3
Voëlvele	0.0	0.0	0.0	0.0	0.0	0.0	0.0	0.0	101.1
Wemmershoek	0.0	0.0	0.0	0.0	0.0	0.0	0.0	0.0	172.8
Wynberg	0.0	0.0	0.0	0.0	0.0	0.0	0.0	0.0	186.4

Notes: \*Total/cummulative rainfall for month indicated above  
LT: Long Term

# Accumulated Monthly Rainfall at Wemmershoek

Note: Wemmershoek station used due to long record and mountainous location



## Drinking Water Quality

### SAMPLE PASS RATE

Month	Water Quality Compliance (%)	Target (%)
Mar-21	99.08	98
Apr-21	99.07	98
May-21	98.98	98
Jun-21	99.11	98
Jul-21	99.10	98
Aug-21	99.12	98
Sep-21	99.09	98
Oct-21	99.11	98
Nov-21	99.11	98
Dec-21	99.09	98
Jan-22	99.04	98
Feb-22	99.04	98
Mar-22	98.99	98
Apr-22	98.96	98
May-22	98.90	98

#### Notes:

This table shows CCT drinking water quality compliance according to the South African National Standard 241:2015. Compliance, measured against all prescribed chemical and microbiological components, consistently exceeds the very high CCT target of 98%. (Overall compliance percentages of continuous sampling and analysis are released on a monthly basis.