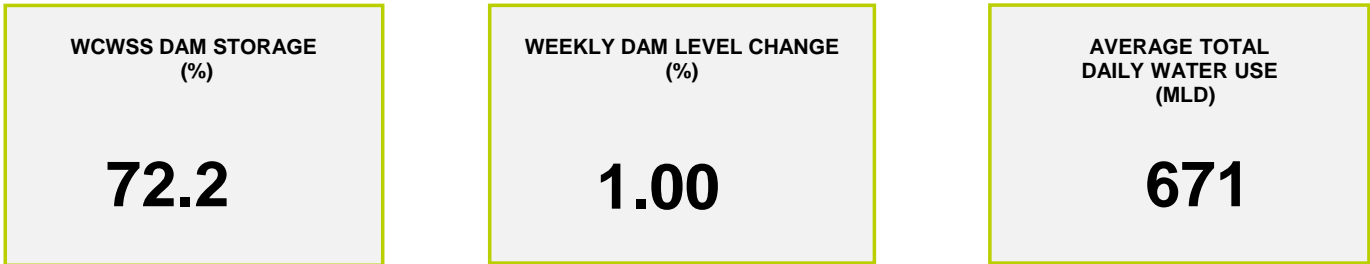
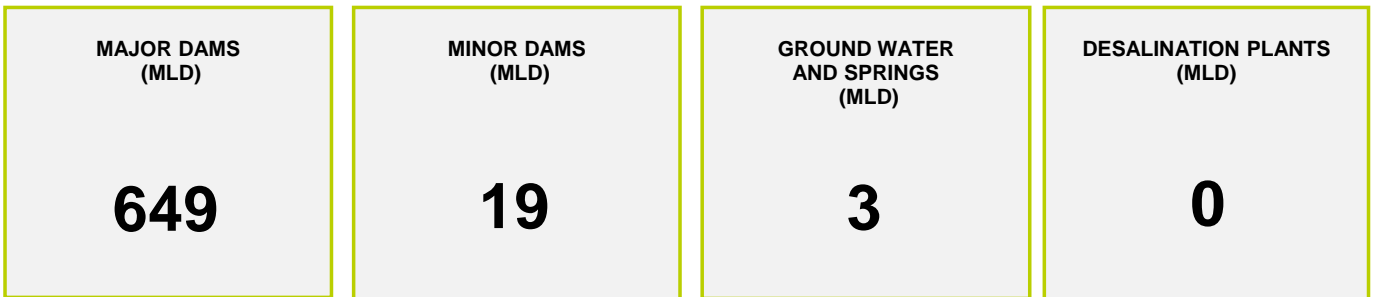




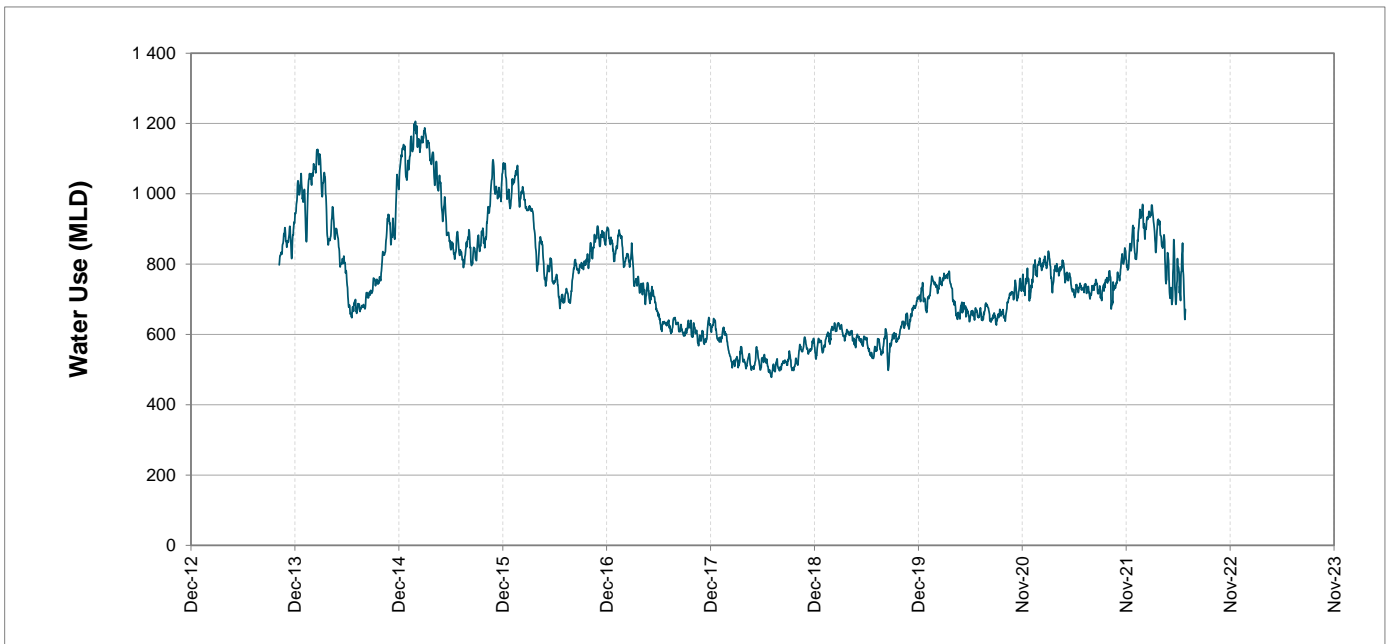
### Headline Statistics



### Water Production from Different Sources



### Overall Water Usage Trend (2010 - Present)



WCWSS means Western Cape Water Supply System

MLD means million litres per day

More information on Water Saving and Restrictions is available on the City of Cape Town's 'ThinkWater' website

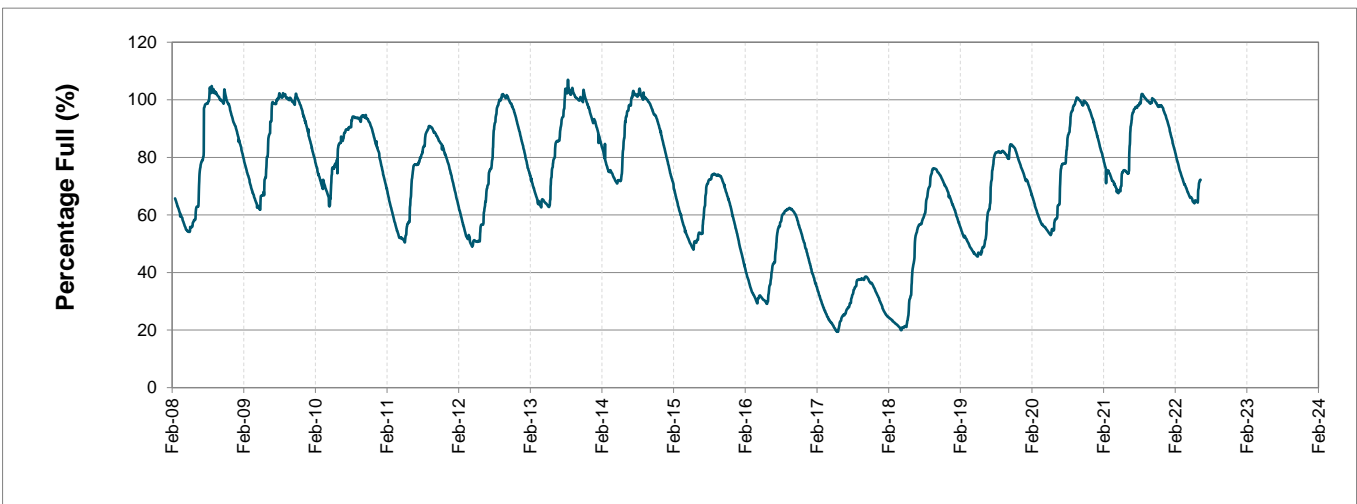
# Water Stored in Major Dams (WCWSS)

Overall Percentage Full **72.2%**

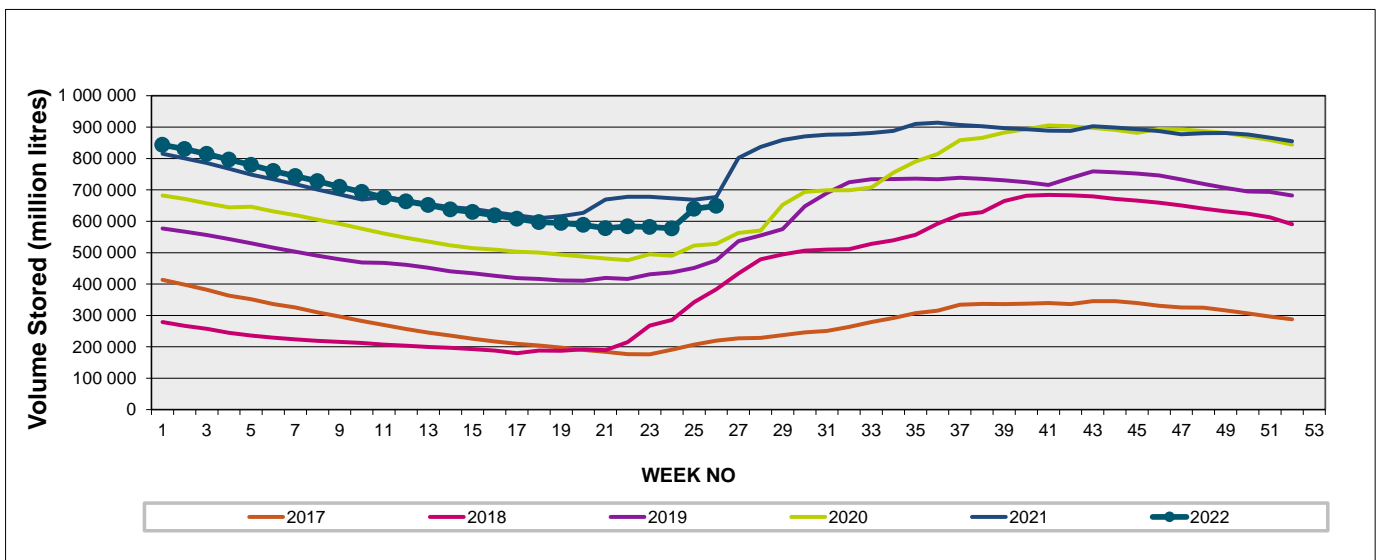
Weekly Change **1.0%**

MAJOR DAMS (WCWSS)	STORAGE						
	CAPACITY	%	%	%	%	%	%
	MI	27 June 2022	Previous week	2021	2020	2019	2018
BERG RIVER	130 010	79.5	81.9	89.3	76.0	76.0	68.6
STEENBRAS LOWER	33 517	79.2	77.6	60.9	50.3	40.7	46.5
STEENBRAS UPPER	31 767	91.7	91.9	61.1	100.0	65.6	94.4
THEEWATERSKLOOF	480 188	74.3	72.7	79.7	55.8	43.4	30.9
VOËLVLEI	164 095	60.9	58.6	61.0	54.8	58.1	38.8
WEMMERSHOEK	58 644	56.4	55.3	62.2	44.1	40.4	71.5
<b>TOTAL STORED</b>	<b>898 221</b>	<b>648 733</b>	<b>639 355</b>	<b>675 326</b>	<b>531 089</b>	<b>460 622</b>	<b>388 692</b>
<b>% STORAGE</b>		<b>72.2%</b>	<b>71.2%</b>	<b>75.2%</b>	<b>59.1%</b>	<b>51.3%</b>	<b>43.3%</b>

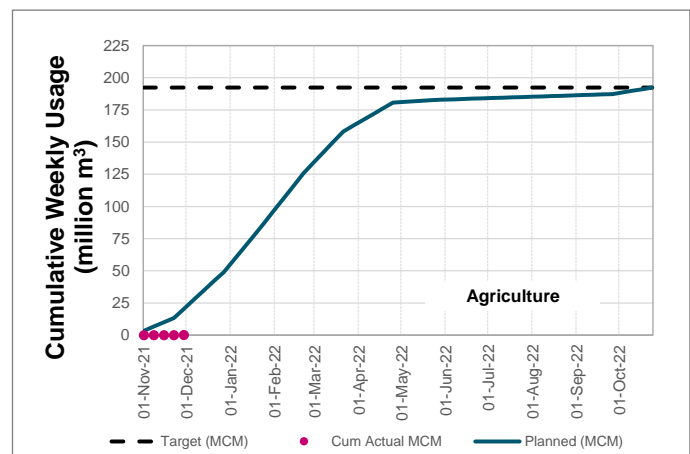
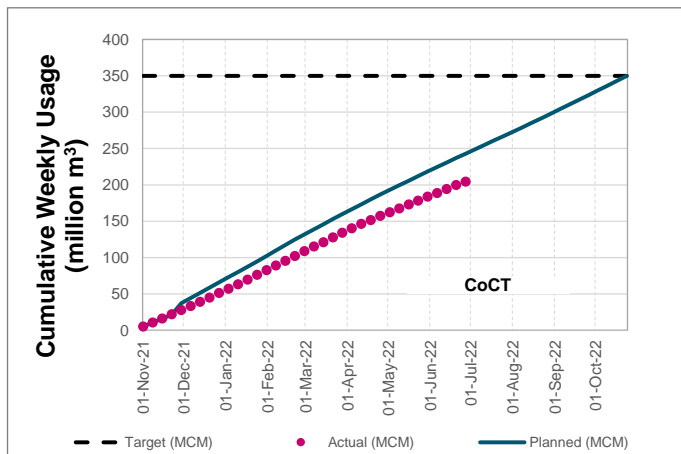
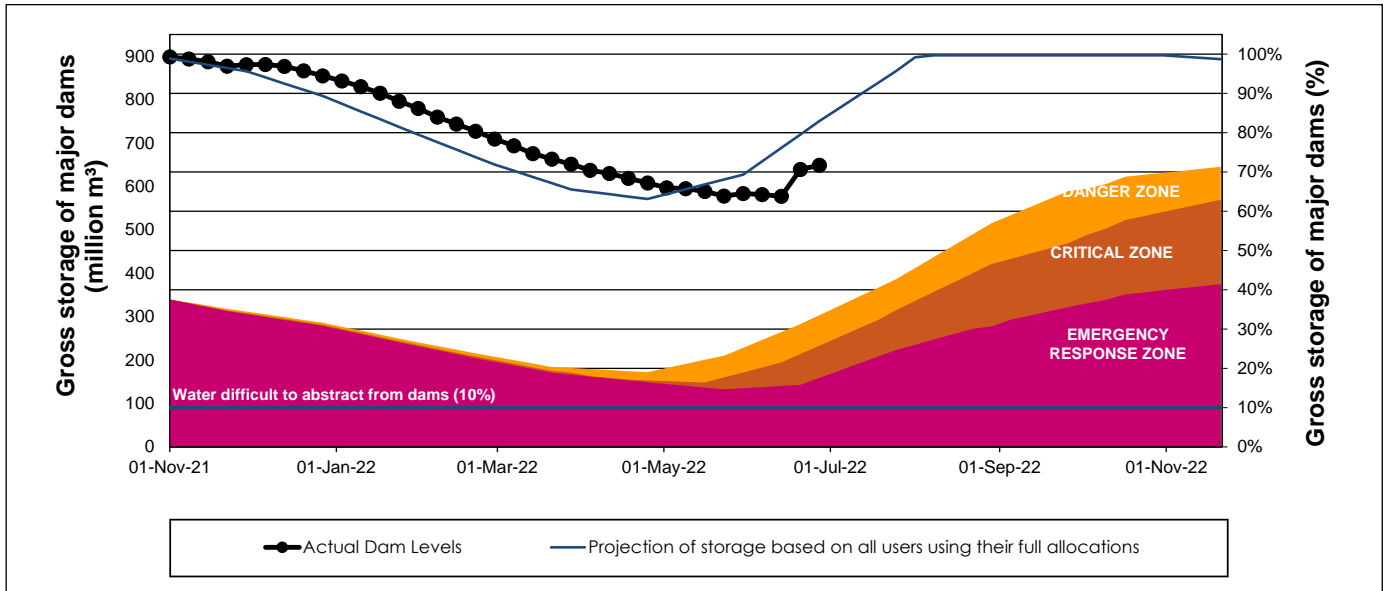
## WCWSS Storage Record (2008 - Present)



## WCWSS Comparative Storage Graph



# WCWSS Dam Storage and Water Use Tracking



## Water Stored in Minor Dams

Overall Percentage Full **70.4**

Weekly Change **0.91**

MINOR DAMS	STORAGE						
	CAPACITY	%	%	%	%	%	%
	MI	27 June 2022	Previous week	2021	2020	2019	2018
ALEXANDRA (Table Mountain)	126	75.1	73.0	15.2	48.8	11.5	88.9
DE VILLIERS (Table Mountain)	243	99.5	97.1	67.2	99.8	77.3	84.8
HELY-HUTCHINSON (Table Mount)	925	99.7	100.3	66.6	74.9	60.7	100.2
KLEINPLAATS (Simon's Town)	1 368	43.0	35.4	46.1	36.5	40.6	57.2
LAND-EN-ZEEZICHT (Helderberg)	451	80.3	81.3	68.3	69.4	90.2	90.0
LEWIS GAY (Simon's Town)	182	67.0	64.0	59.3	42.0	0.0	100.9
VICTORIA (Table Mountain)	128	100.8	101.2	27.1	101.2	33.0	66.4
WOODHEAD (Table Mountain)	954	66.6	72.9	72.1	100.0	70.6	98.0
<b>Total Stored</b>	<b>4 377</b>	<b>3080.0</b>	<b>3040.1</b>	<b>2545.8</b>	<b>2958.9</b>	<b>2435.6</b>	<b>3611.0</b>
<b>Percentages stored</b>		<b>70.4</b>	<b>69.5</b>	<b>58.2</b>	<b>67.6</b>	<b>55.6</b>	<b>82.5</b>

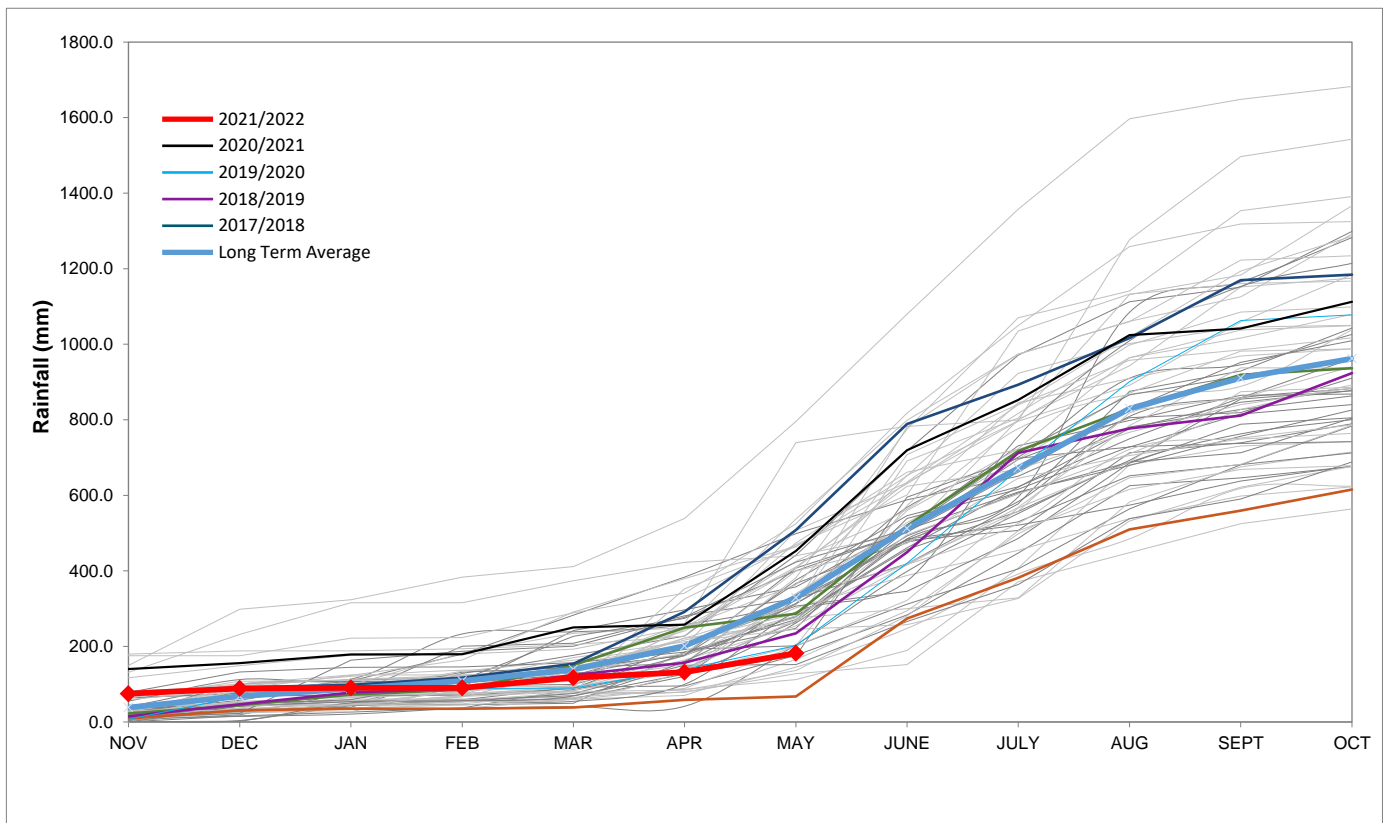
## Rainfall Recorded

RAINFALL (mm)	20-Jun	21-Jun	22-Jun	23-Jun	24-Jun	25-Jun	26-Jun	Jun	
								Total*	LT Average
Blackheath Upper	0.0	0.5	0.0	16.0	0.0	0.0	0.0	79.5	73.3
Brooklands	0.0	1.0	10.0	12.0	0.0	0.0	0.0	82.5	138.7
Newlands	0.0	0.0	7.0	6.0	0.0	0.0	0.0	216.3	291.0
Steenbras	0.0	1.0	3.5	10.5	0.0	0.0		191.9	156.0
Table Mountain (Woodhead)	0.0	0.0	12.0	10.0	0.0	0.0		227.0	240.5
Theewaterskloof	0.0	1.0	2.6	26.2	0.0	0.0	0.0	105.5	72.3
Tygerberg	0.0	0.0	0.0	10.1	0.0	0.0	0.0	189.2	93.8
Voëlvele	0.0	0.0	0.4	13.0	0.0	0.0	0.0	111.9	115.6
Wemmershoek	0.0	0.4	2.7	18.6	0.0	0.0	0.0	198.4	189.6
Wynberg	0.0	0.0	0.0	0.0	0.0	0.0	0.0	195.1	175.2

Notes: \*Total/cummulative rainfall for month indicated above  
LT: Long Term

## Accumulated Monthly Rainfall at Wemmershoek

Note: Wemmershoek station used due to long record and mountainous location



## Drinking Water Quality

### SAMPLE PASS RATE

Month	Water Quality Compliance (%)	Target (%)
Mar-21	99.08	98
Apr-21	99.07	98
May-21	98.98	98
Jun-21	99.11	98
Jul-21	99.10	98
Aug-21	99.12	98
Sep-21	99.09	98
Oct-21	99.11	98
Nov-21	99.11	98
Dec-21	99.09	98
Jan-22	99.04	98
Feb-22	99.04	98
Mar-22	98.99	98
Apr-22	98.96	98
May-22	98.90	98

#### Notes:

This table shows CCT drinking water quality compliance according to the South African National Standard 241:2015. Compliance, measured against all prescribed chemical and microbiological components, consistently exceeds the very high CCT target of 98%. (Overall compliance percentages of continuous sampling and analysis are released on a monthly basis.