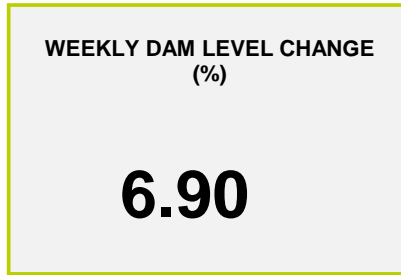
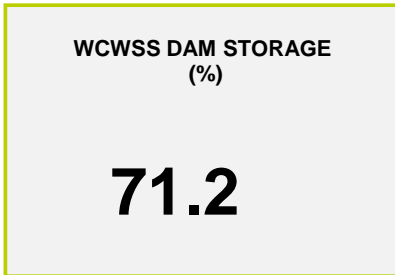
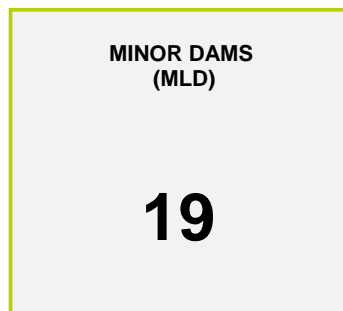
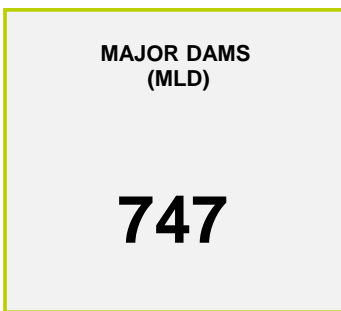




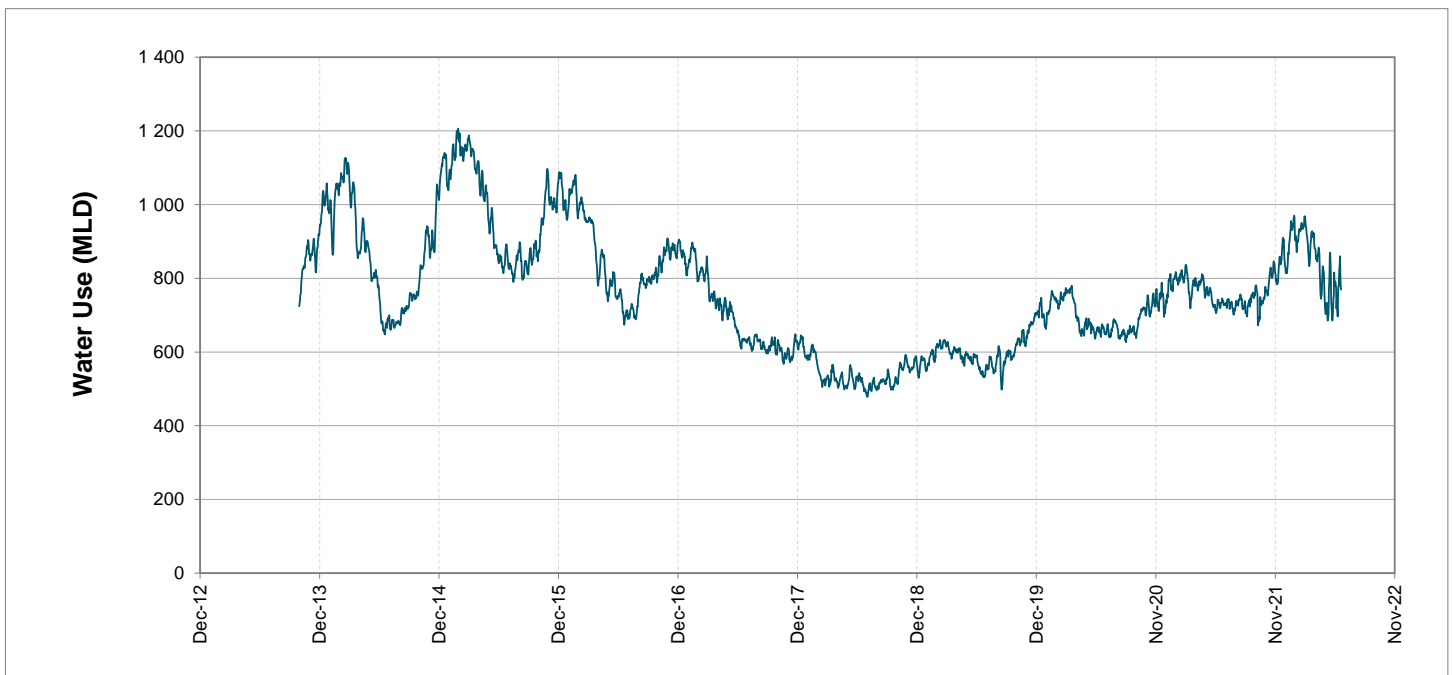
Headline Statistics



Water Production from Different Sources



Overall Water Usage Trend (2010 - Present)



WCWSS means Western Cape Water Supply System

MLD means million litres per day

More information on Water Saving and Restrictions is available on the City of Cape Town's 'ThinkWater' website

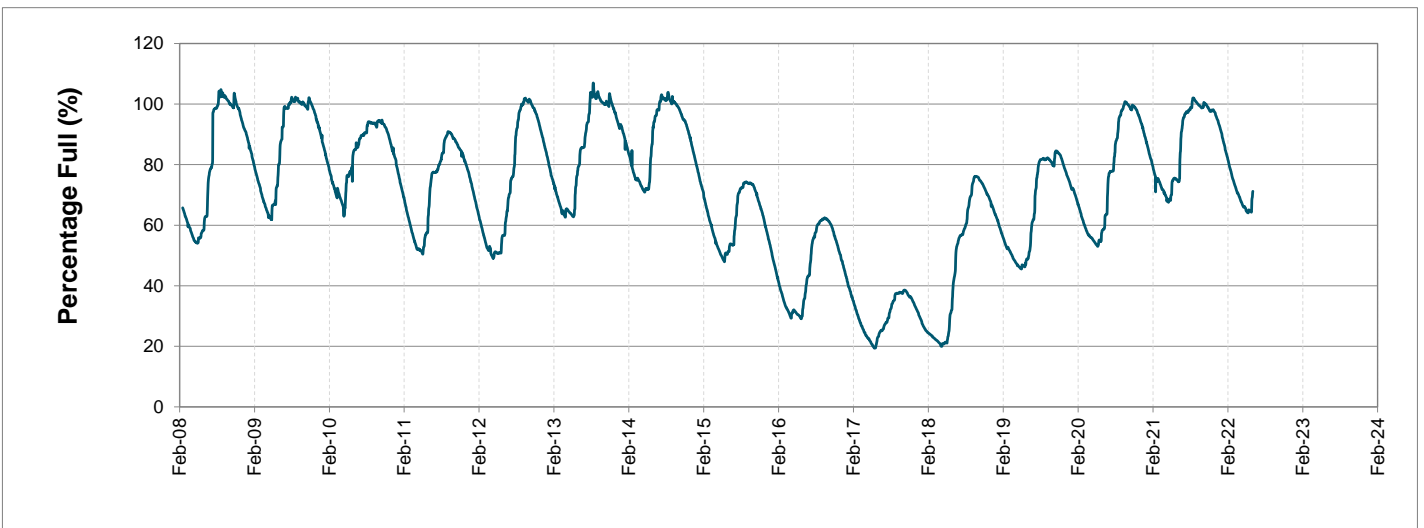
Water Stored in Major Dams (WCWSS)

Overall Percentage Full **71.2%**

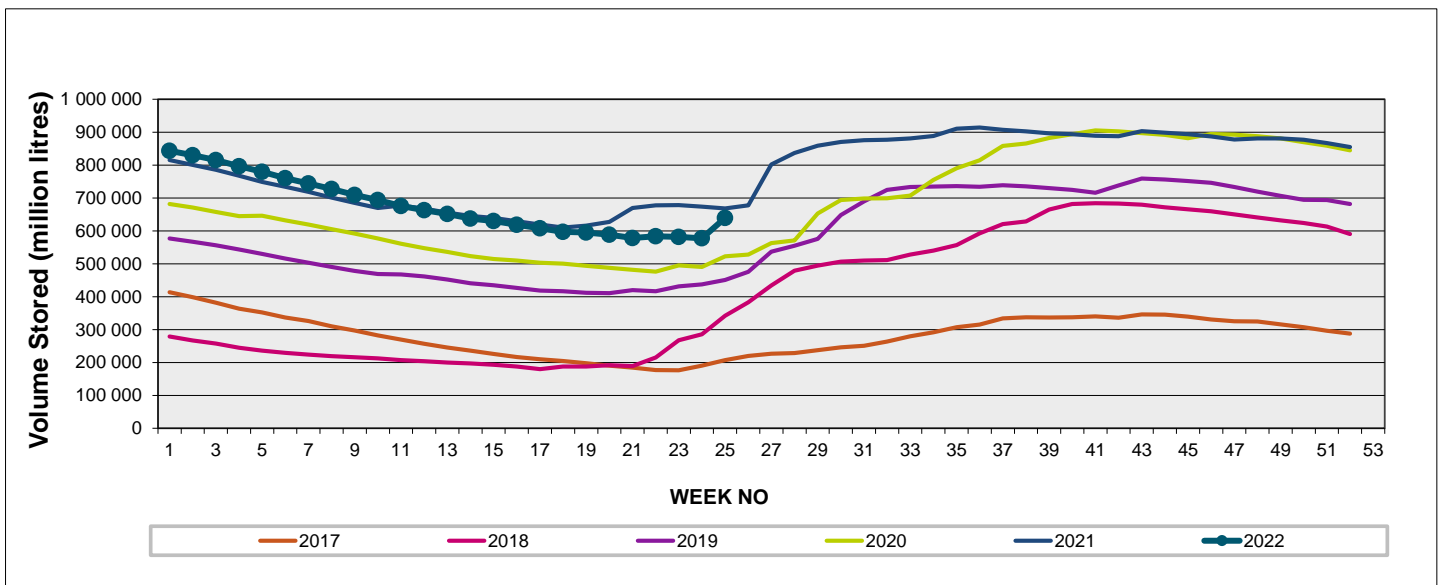
Weekly Change **6.9%**

MAJOR DAMS (WCWSS)	STORAGE						
	CAPACITY	%	%	%	%	%	%
	MI	20 June 2022	Previous week	2021	2020	2019	2018
BERG RIVER	130 010	81.9	69.7	86.5	73.9	73.4	65.0
STEENBRAS LOWER	33 517	77.6	59.9	58.7	50.1	39.0	45.9
STEENBRAS UPPER	31 767	91.9	83.2	60.2	99.5	66.6	85.2
THEEWATERSKLOOF	480 188	72.7	66.8	79.9	55.5	41.0	29.0
VOËLVLEI	164 095	58.6	55.8	60.6	54.4	55.1	33.3
WEMMERSHOEK	58 644	55.3	47.2	59.9	43.9	40.1	69.2
TOTAL STORED	898 221	639 355	577 378	669 645	525 844	440 701	361 544
% STORAGE		71.2%	64.3%	74.6%	58.5%	49.1%	40.3%

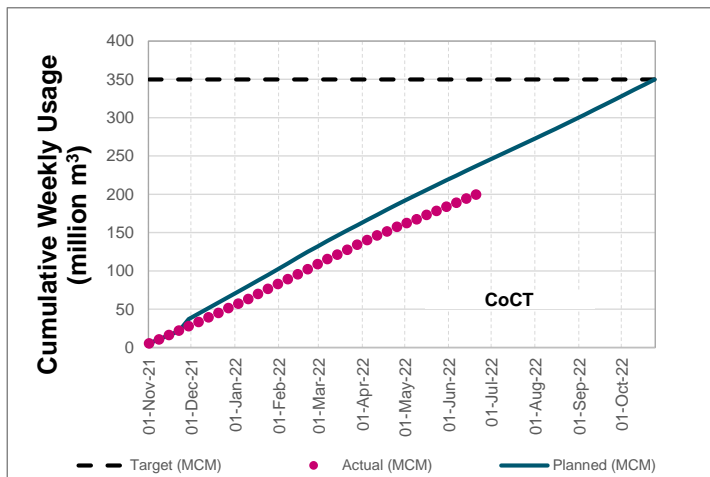
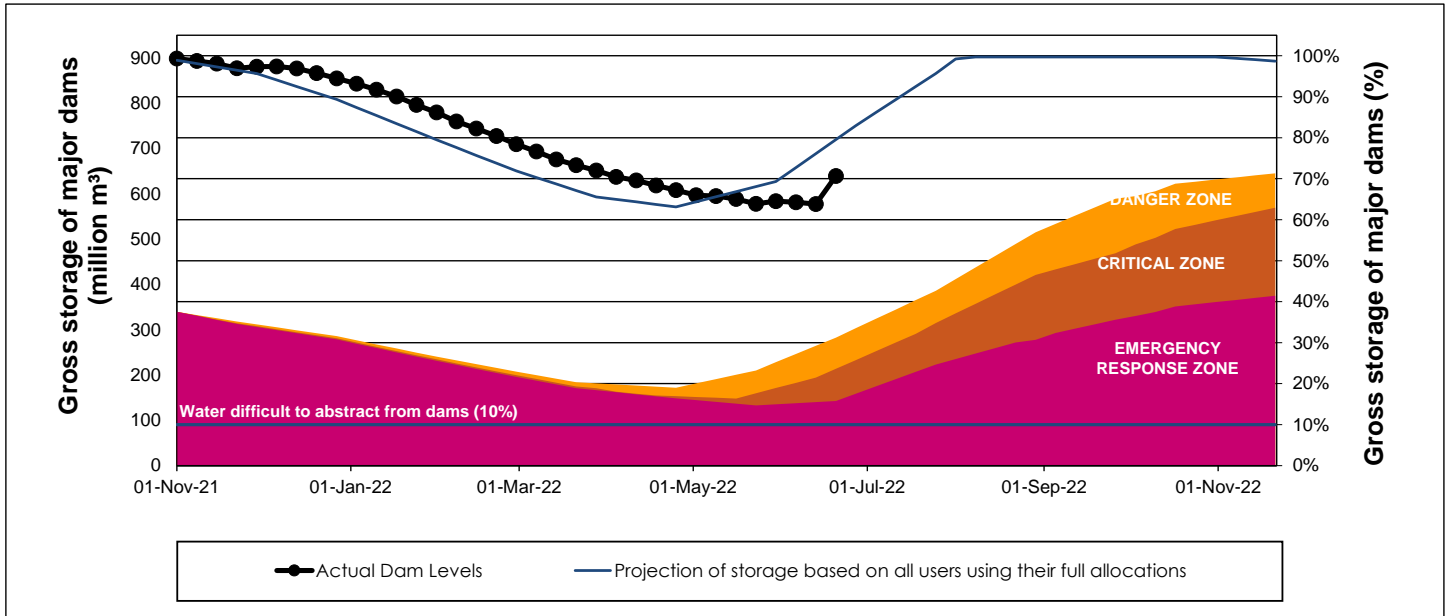
WCWSS Storage Record (2008 - Present)



WCWSS Comparative Storage Graph



WCWSS Dam Storage and Water Use Tracking



Water Stored in Minor Dams

Overall Percentage Full **69.5**

Weekly Change **16.03**

MINOR DAMS	STORAGE						
	CAPACITY	%	%	%	%	%	%
	MI	20 June 2022	Previous week	2021	2020	2019	2018
ALEXANDRA (Table Mountain)	126	73.0	59.8	12.0	47.6	8.3	92.6
DE VILLIERS (Table Mountain)	243	97.1	76.5	64.8	100.2	74.0	79.2
HELY-HUTCHINSON (Table Mount)	925	100.3	58.6	52.3	63.5	45.6	100.7
KLEINPLAATS (Simon's Town)	1 368	35.4	36.5	45.5	36.2	42.1	50.1
LAND-EN-ZEEZICHT (Helderberg)	451	81.3	72.6	65.1	66.9	92.4	91.4
LEWIS GAY (Simon's Town)	182	64.0	17.0	61.8	37.1	0.0	100.9
VICTORIA (Table Mountain)	128	101.2	67.0	21.6	100.4	25.1	62.2
WOODHEAD (Table Mountain)	954	72.9	62.6	69.1	99.8	66.8	100.2
Total Stored	4 377	3040.1	2338.5	2348.3	2825.3	2267.4	3536.7
Percentages stored		69.5	53.4	53.7	64.5	51.8	80.8

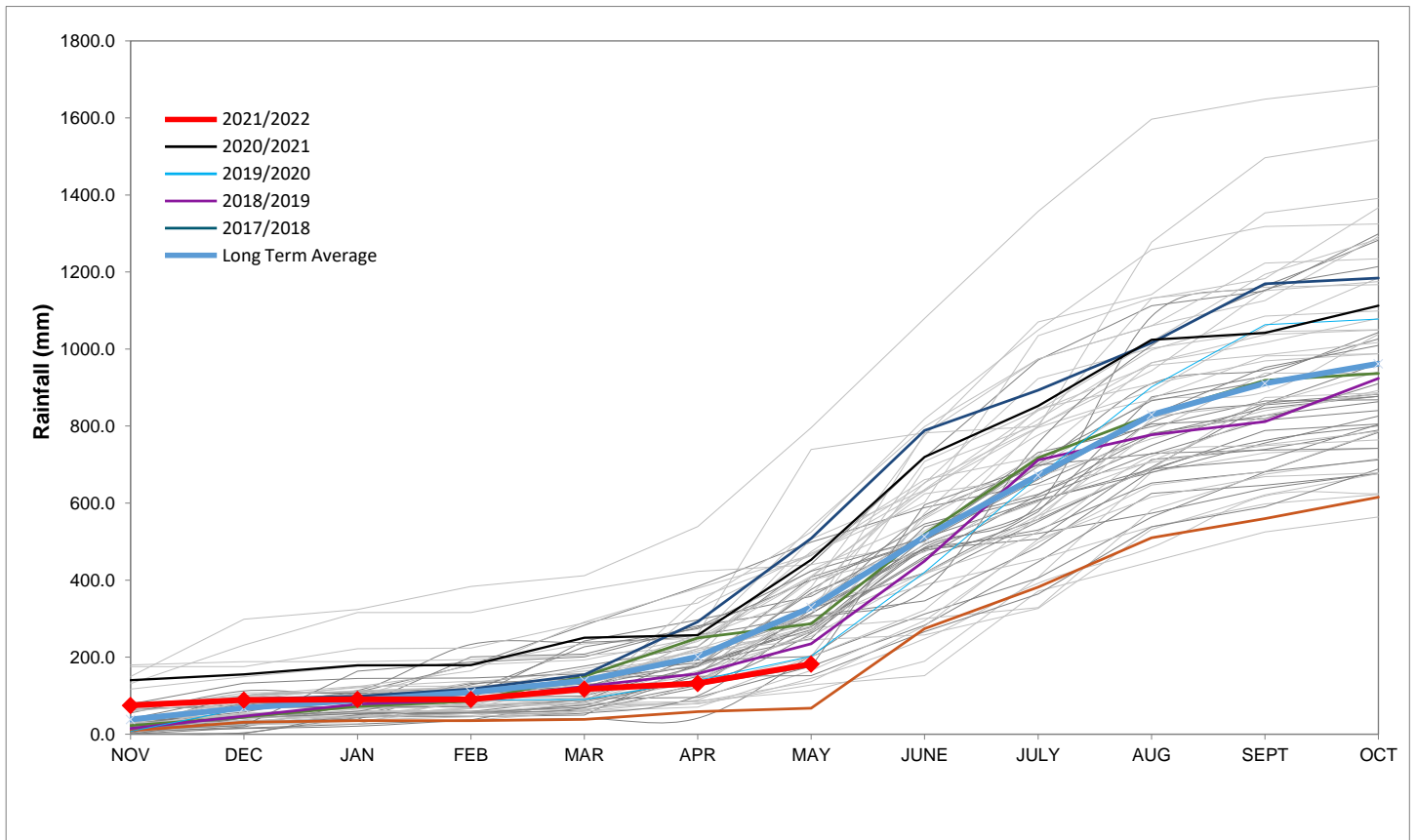
Rainfall Recorded

RAINFALL (mm)	13-Jun	14-Jun	15-Jun	16-Jun	17-Jun	18-Jun	19-Jun	Jun	
								Total*	LT Average
Blackheath Upper	9.0	30.0	1.0	0.0	10.0	8.0	0.0	63.0	73.3
Brooklands	10.0	10.0	5.0	1.5	20.0	3.0	0.0	59.5	138.7
Newlands	100.0	35.0	1.5	0.0	50.2	1.1	0.5	203.3	291.0
Steenbras	120.0	29.6	0.0	0.0	9.8	2.5	0.5	176.9	156.0
Table Mountain (Woodhead)	110.0	10.0	0.0	0.0	35.0	0.0		205.0	240.5
Theewaterskloof	32.1	27.2	0.0	0.4	12.2	1.2	0.0	75.7	72.3
Tygerberg	131.0	19.3	0.0	0.0	19.0	3.1	0.0	179.1	93.8
Voëlvlei	39.0	30.0	0.5	0.0	12.0	15.0	0.0	98.5	115.6
Wemmershoek	103.4	24.7	0.0	0.0	31.3	6.3	0.0	176.7	189.6
Wynberg	105.0	20.0	0.0	0.0	46.5	1.1	0.0	195.1	175.2

Notes: *Total/cummulative rainfall for month indicated above
LT: Long Term

Accumulated Monthly Rainfall at Wemmershoek

Note: Wemmershoek station used due to long record and mountainous location



Drinking Water Quality

SAMPLE PASS RATE

Month	Water Quality Compliance (%)	Target (%)
Feb-21	99.12	98
Mar-21	99.08	98
Apr-21	99.07	98
May-21	98.98	98
Jun-21	99.11	98
Jul-21	99.10	98
Aug-21	99.12	98
Sep-21	99.09	98
Oct-21	99.11	98
Nov-21	99.11	98
Dec-21	99.09	98
Jan-22	99.04	98
Feb-22	99.04	98
Mar-22	98.99	98
Apr-22	98.96	98

Notes:

This table shows CCT drinking water quality compliance according to the South African National Standard 241:2015. Compliance, measured against all prescribed chemical and microbiological components, consistently exceeds the very high CCT target of 98%. (Overall compliance percentages of continuous sampling and analysis are released on a monthly basis.