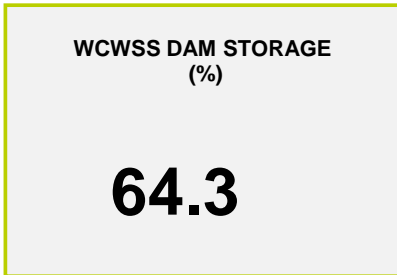
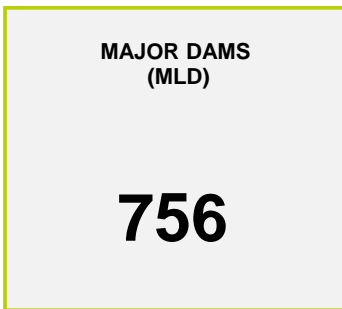




Headline Statistics



Water Production from Different Sources



Overall Water Usage Trend (2010 - Present)



WCWSS means Western Cape Water Supply System

MLD means million litres per day

More information on Water Saving and Restrictions is available on the City of Cape Town's 'ThinkWater' website

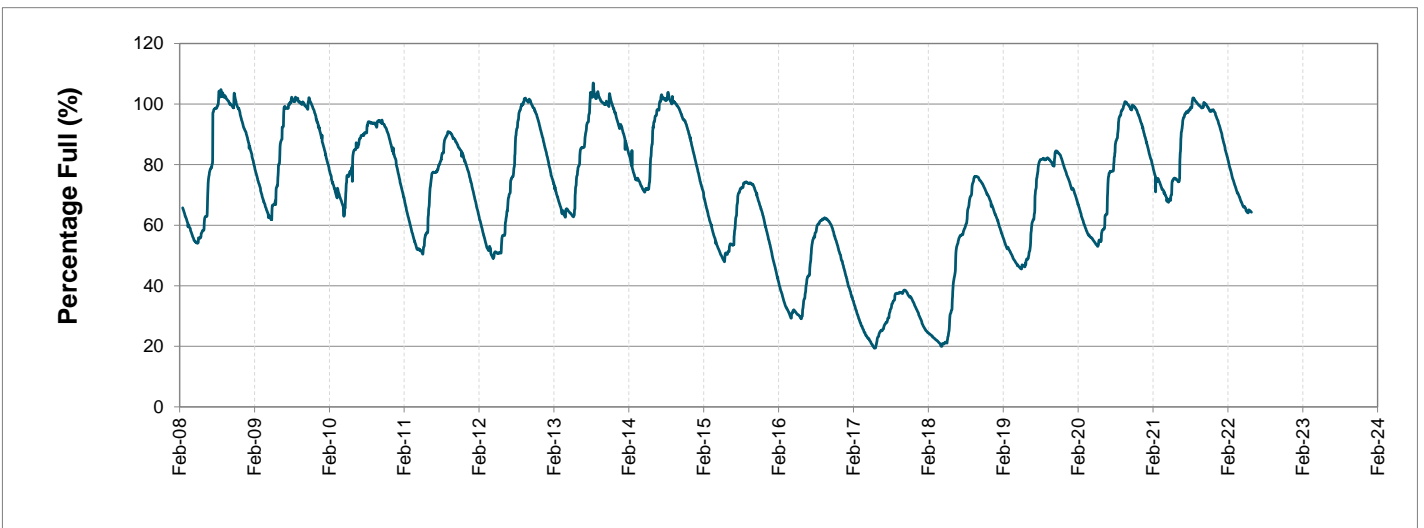
Water Stored in Major Dams (WCWSS)

Overall Percentage Full **64.3%**

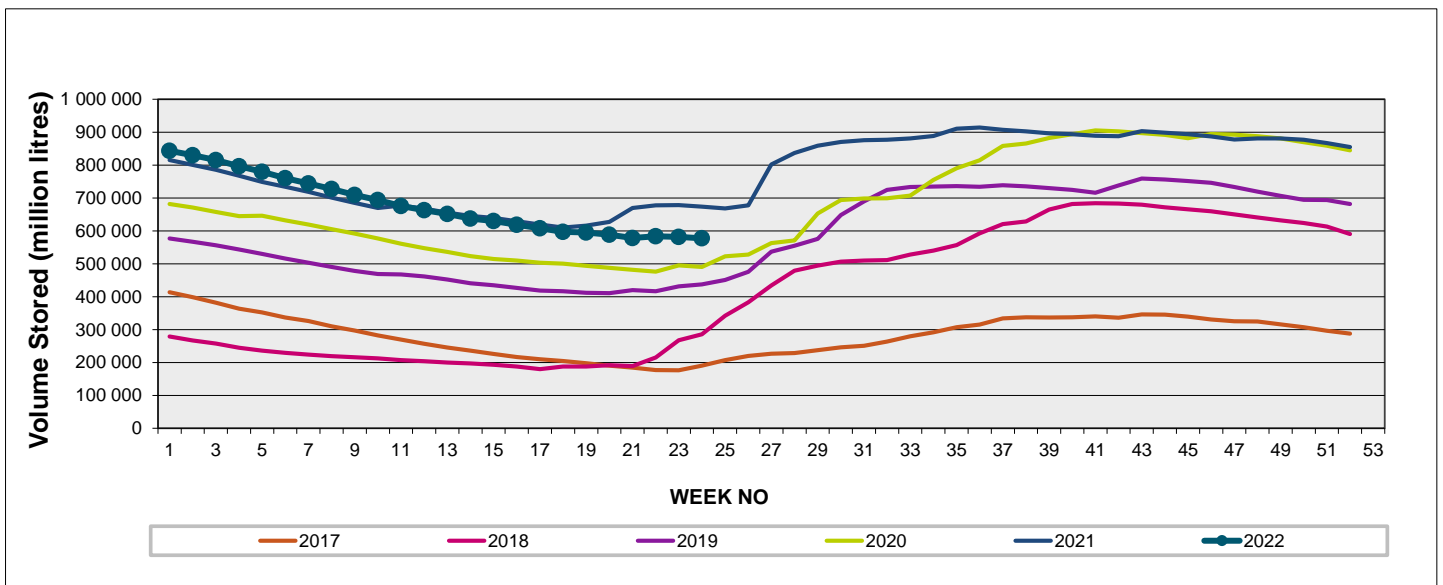
Weekly Change **-0.4%**

MAJOR DAMS (WCWSS)	STORAGE						
	CAPACITY	%	%	%	%	%	%
	MI	13 June 2022	Previous week	2021	2020	2019	2018
BERG RIVER	130 010	69.7	70.0	86.6	73.0	73.7	54.7
STEENBRAS LOWER	33 517	59.9	60.8	60.7	49.5	40.3	40.8
STEENBRAS UPPER	31 767	83.2	82.9	59.5	98.8	68.5	75.3
THEEWATERSKLOOF	480 188	66.8	67.3	80.6	54.5	40.1	21.5
VOËLVLEI	164 095	55.8	56.2	61.2	52.9	55.3	25.5
WEMMERSHOEK	58 644	47.2	48.8	61.0	42.8	41.1	58.0
TOTAL STORED	898 221	577 378	581 512	674 920	516 495	438 419	288 010
% STORAGE		64.3%	64.7%	75.1%	57.5%	48.8%	32.1%

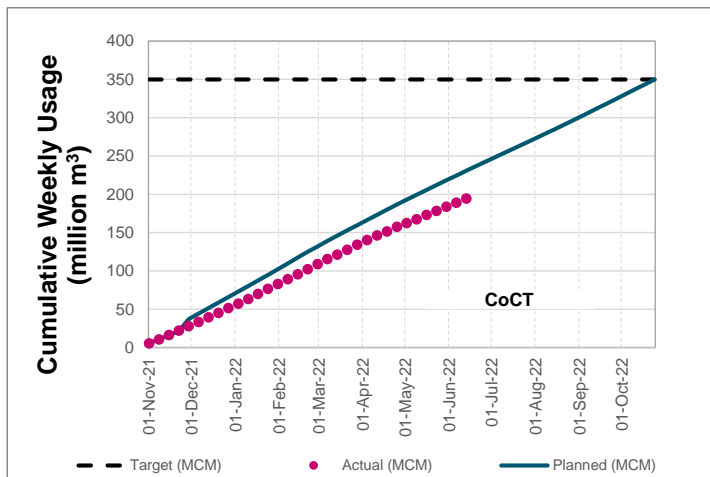
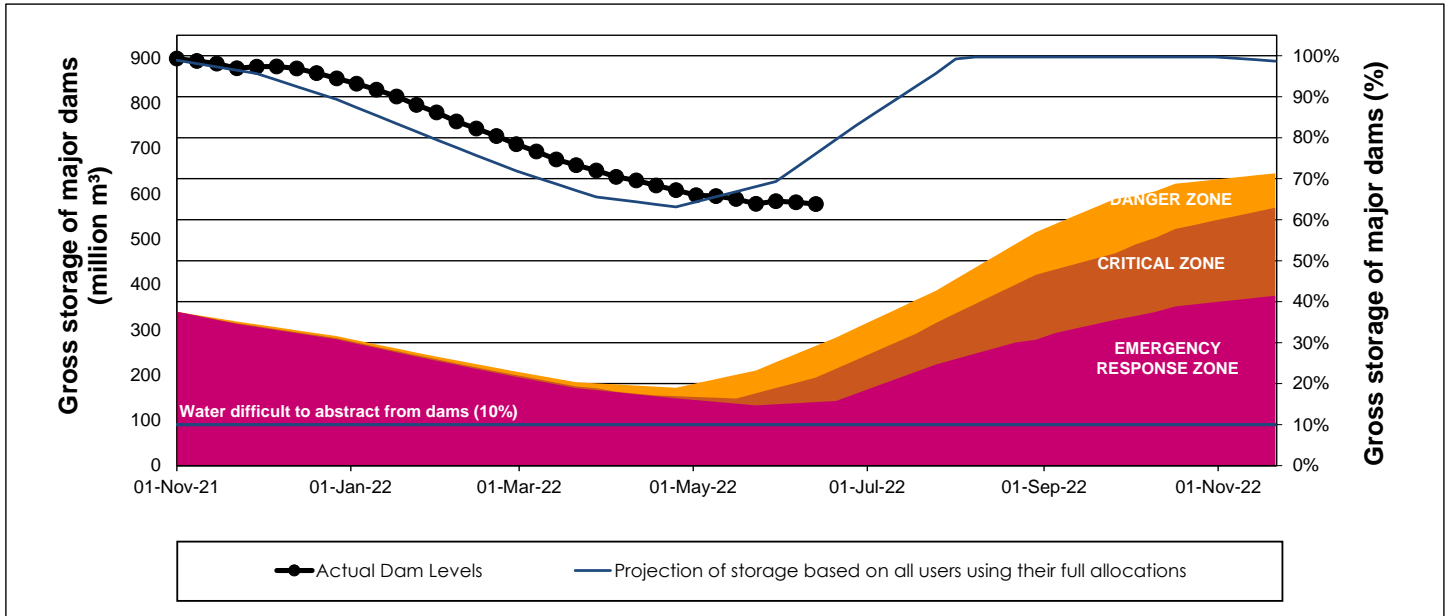
WCWSS Storage Record (2008 - Present)



WCWSS Comparative Storage Graph



WCWSS Dam Storage and Water Use Tracking



Water Stored in Minor Dams

Overall Percentage Full **53.4**

Weekly Change **-2.33**

MINOR DAMS	STORAGE						
	CAPACITY	%	%	%	%	%	%
	MI	13 June 2022	Previous week	2021	2020	2019	2018
ALEXANDRA (Table Mountain)	126	59.8	60.0	11.5	42.1	6.4	91.6
DE VILLIERS (Table Mountain)	243	76.5	77.2	64.6	99.8	73.2	70.6
HELY-HUTCHINSON (Table Mount)	925	58.6	59.9	50.4	52.5	43.9	100.0
KLEINPLAATS (Simon's Town)	1 368	36.5	40.7	46.1	35.6	43.6	42.1
LAND-EN-ZEEZICHT (Helderberg)	451	72.6	73.8	63.9	65.1	93.8	89.8
LEWIS GAY (Simon's Town)	182	17.0	6.8	62.6	26.6	0.0	93.6
VICTORIA (Table Mountain)	128	67.0	67.3	20.5	96.6	21.3	52.3
WOODHEAD (Table Mountain)	954	62.6	67.3	68.1	99.8	66.3	80.2
Total Stored	4 377	2338.5	2440.5	2321.4	2677.4	2263.8	3181.4
Percentages stored		53.4	55.8	53.0	61.2	51.7	72.7

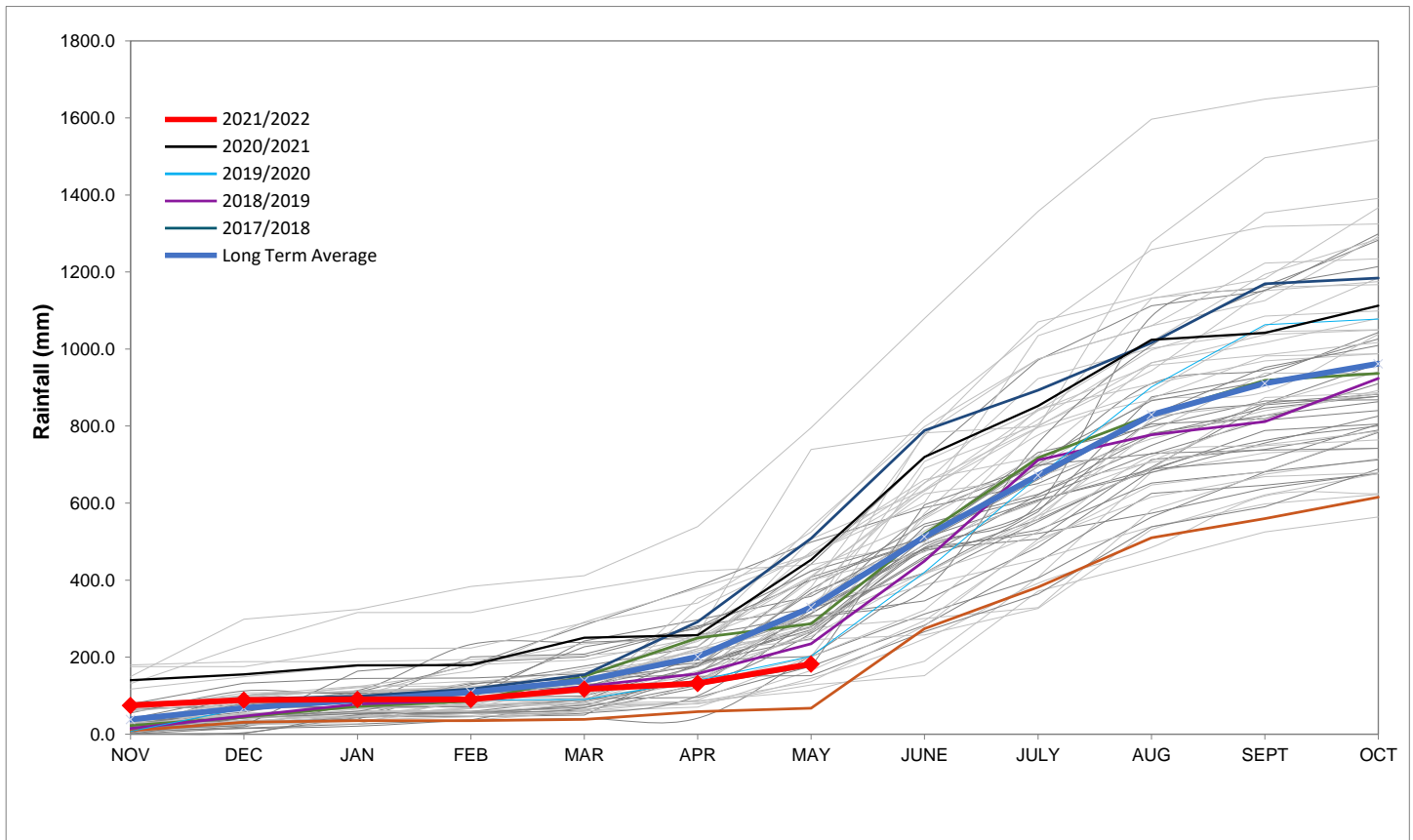
Rainfall Recorded

RAINFALL (mm)	06-Jun	07-Jun	08-Jun	09-Jun	10-Jun	11-Jun	12-Jun	Jun	
								Total*	LT Average
Blackheath Upper	0.0	0.0	0.0	0.0	0.0	0.0	5.0	5.0	73.3
Brooklands	0.0	0.0	0.0	0.0	0.0	0.0	10.0	10.0	138.7
Newlands	0.0	0.0	0.0	0.0	0.0	0.0	15.0	15.0	291.0
Steenbras	0.0	0.0	0.0	0.0	0.0	0.0	14.5	14.5	156.0
Table Mountain (Woodhead)	0.0	0.0	0.0	0.0	0.0	0.0		0.0	240.5
Theewaterskloof	0.0	0.0	0.0	0.0	0.0	0.0	2.4	2.6	72.3
Tygerberg	0.0	0.0	0.0	0.0	0.0	0.0	6.7	6.7	93.8
Voëlvllei	0.0	0.0	0.0	0.0	0.0	0.0	2.0	2.0	115.6
Wemmershoek	99557.0	99942.0	100228.0	100372.0	98811.0	100512.0	99819.0	1302063.0	189.6
Wynberg	0.0	0.0	0.0	0.0	0.0	0.0	22.5	22.5	175.2

Notes: *Total/cummulative rainfall for month indicated above
LT: Long Term

Accumulated Monthly Rainfall at Wemmershoek

Note: Wemmershoek station used due to long record and mountainous location



Drinking Water Quality

SAMPLE PASS RATE

Month	Water Quality Compliance (%)	Target (%)
Feb-21	99.12	98
Mar-21	99.08	98
Apr-21	99.07	98
May-21	98.98	98
Jun-21	99.11	98
Jul-21	99.10	98
Aug-21	99.12	98
Sep-21	99.09	98
Oct-21	99.11	98
Nov-21	99.11	98
Dec-21	99.09	98
Jan-22	99.04	98
Feb-22	99.04	98
Mar-22	98.99	98
Apr-22	98.96	98

Notes:

This table shows CCT drinking water quality compliance according to the South African National Standard 241:2015. Compliance, measured against all prescribed chemical and microbiological components, consistently exceeds the very high CCT target of 98%. (Overall compliance percentages of continuous sampling and analysis are released on a monthly basis.)