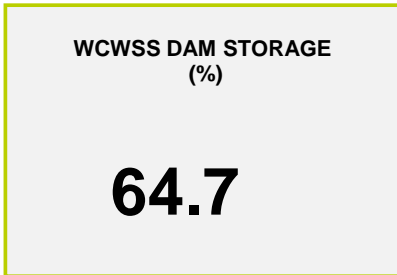
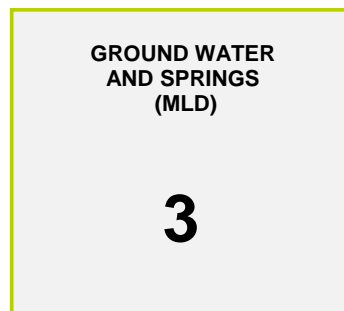
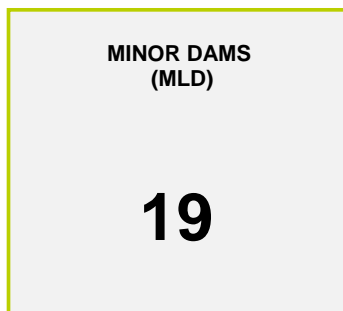




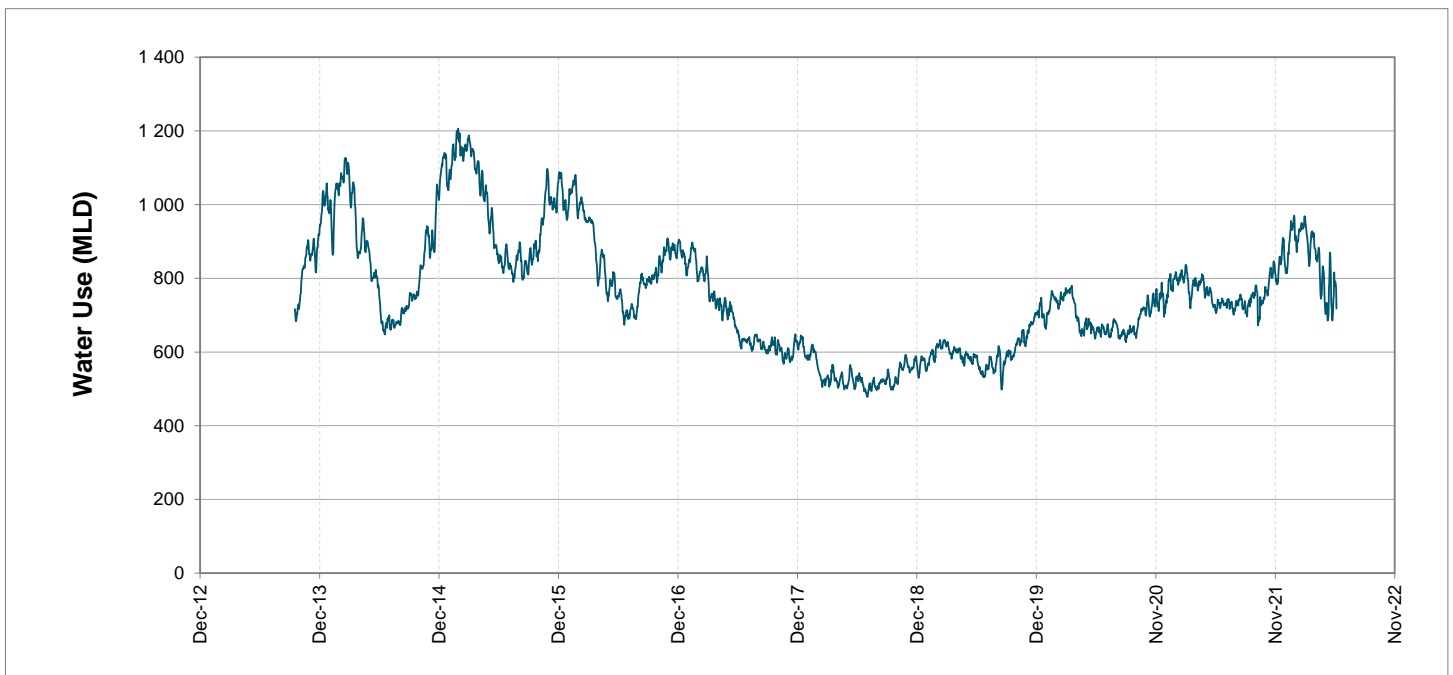
Headline Statistics



Water Production from Different Sources



Overall Water Usage Trend (2010 - Present)



WCWSS means Western Cape Water Supply System

MLD means million litres per day

More information on Water Saving and Restrictions is available on the City of Cape Town's 'ThinkWater' website

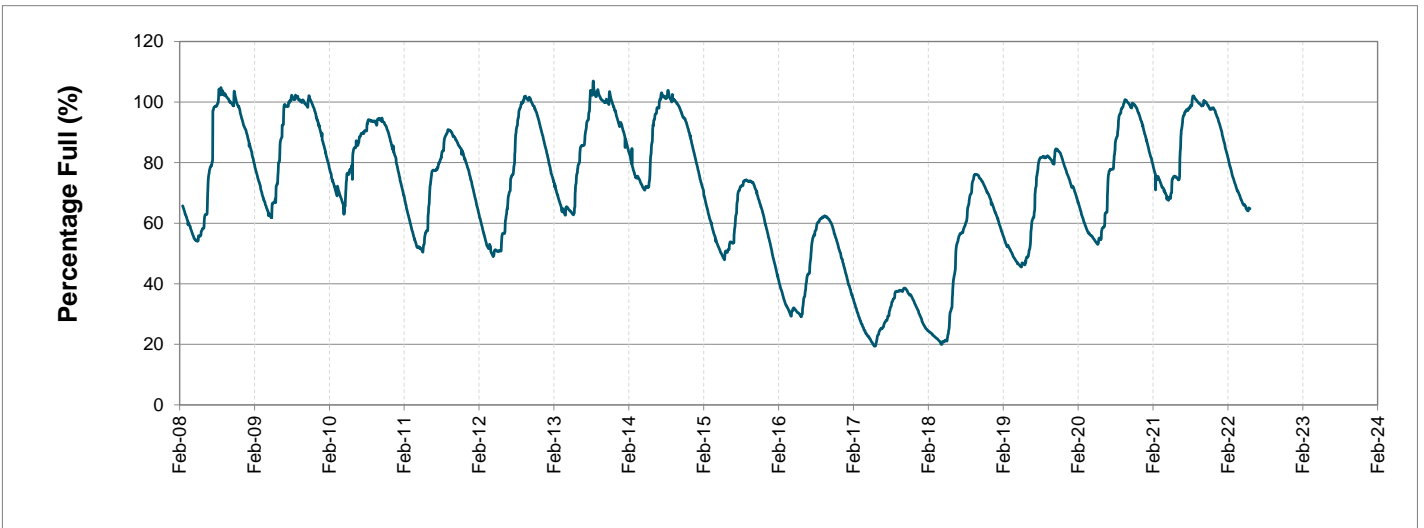
Water Stored in Major Dams (WCWSS)

Overall Percentage Full **64.7%**

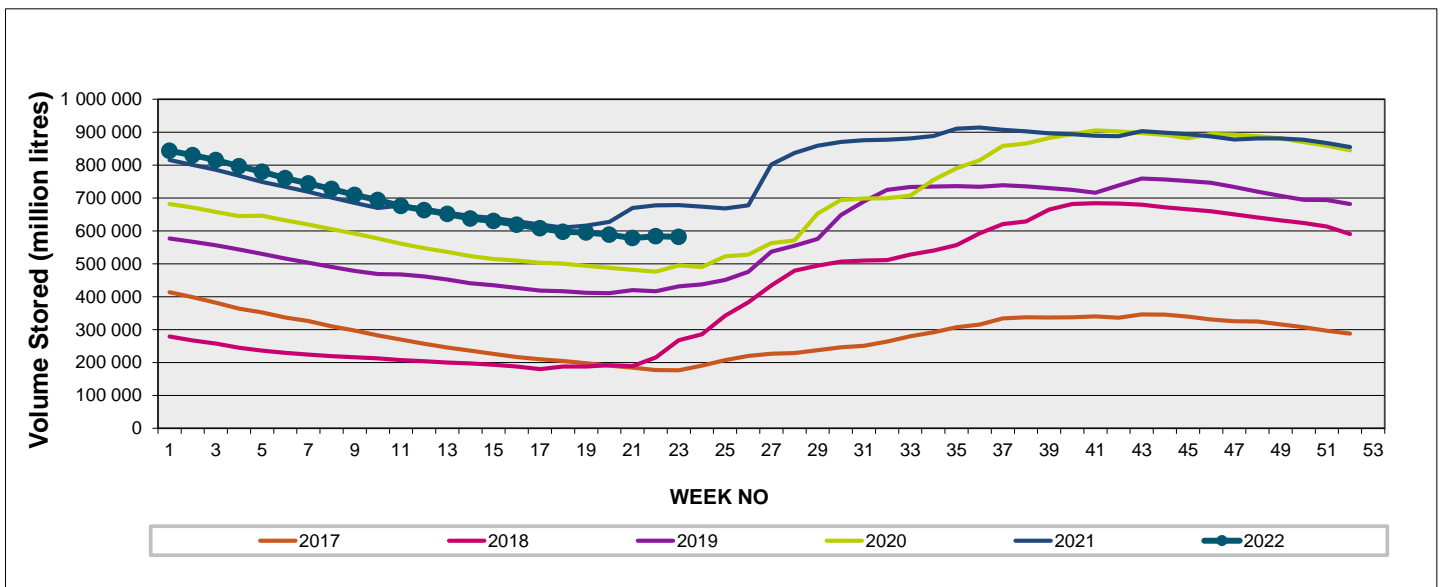
Weekly Change **-0.3%**

MAJOR DAMS (WCWSS)	STORAGE						
	CAPACITY	%	%	%	%	%	%
	MI	06 June 2022	Previous week	2021	2020	2019	2018
BERG RIVER	130 010	70.0	69.7	86.5	69.2	71.9	52.5
STEENBRAS LOWER	33 517	60.8	61.1	61.7	46.5	39.7	39.8
STEENBRAS UPPER	31 767	82.9	82.9	55.9	97.2	66.3	72.7
THEEWATERSKLOOF	480 188	67.3	67.5	81.0	51.8	37.4	20.6
VOËLVLEI	164 095	56.2	56.4	61.6	50.2	54.2	23.1
WEMMERSHOEK	58 644	48.8	50.4	62.3	41.4	41.2	57.4
TOTAL STORED	898 221	581 512	583 704	677 760	491 692	420 368	275 322
% STORAGE		64.7%	65.0%	75.5%	54.7%	46.8%	30.7%

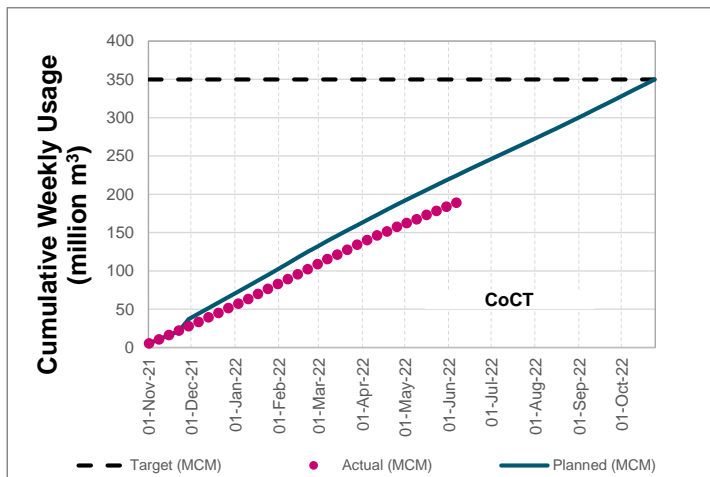
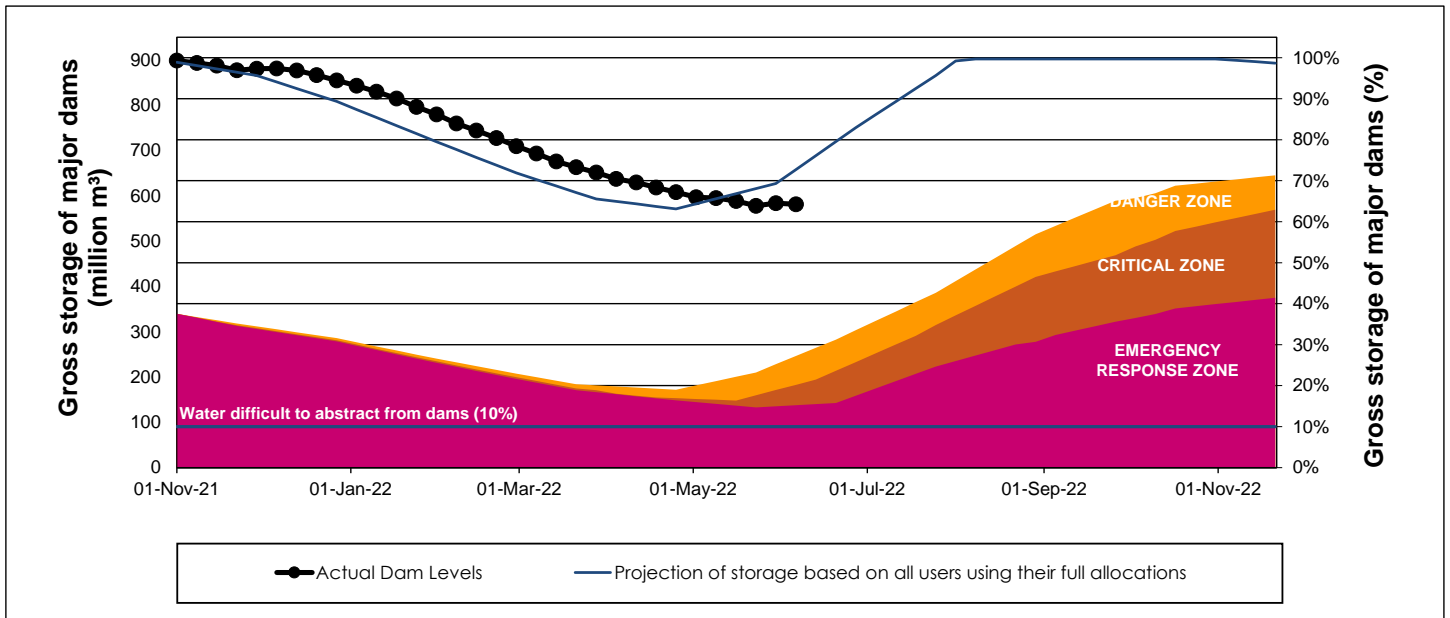
WCWSS Storage Record (2008 - Present)



WCWSS Comparative Storage Graph



WCWSS Dam Storage and Water Use Tracking



Water Stored in Minor Dams

Overall Percentage Full **55.8**

Weekly Change **1.44**

MINOR DAMS	STORAGE						
	CAPACITY	%	%	%	%	%	%
	MI	06 June 2022	Previous week	2021	2020	2019	2018
ALEXANDRA (Table Mountain)	126	60.0	59.8	26.2	41.8	0.0	92.2
DE VILLIERS (Table Mountain)	243	77.2	75.2	64.3	99.8	68.0	66.1
HELY-HUTCHINSON (Table Mount)	925	59.9	54.6	49.6	42.8	30.0	100.0
KLEINPLAATS (Simon's Town)	1 368	40.7	41.8	46.1	35.8	42.6	40.6
LAND-EN-ZEEZICHT (Helderberg)	451	73.8	73.8	66.4	63.8	94.3	90.9
LEWIS GAY (Simon's Town)	182	6.8	3.8	64.0	19.3	0.0	84.3
VICTORIA (Table Mountain)	128	67.3	65.9	20.8	90.8	15.6	43.9
WOODHEAD (Table Mountain)	954	67.3	65.6	68.1	99.6	62.4	72.8
Total Stored	4 377	2440.5	2377.7	2348.4	2560.7	2059.3	3060.1
Percentages stored		55.8	54.3	53.7	58.5	47.0	69.9

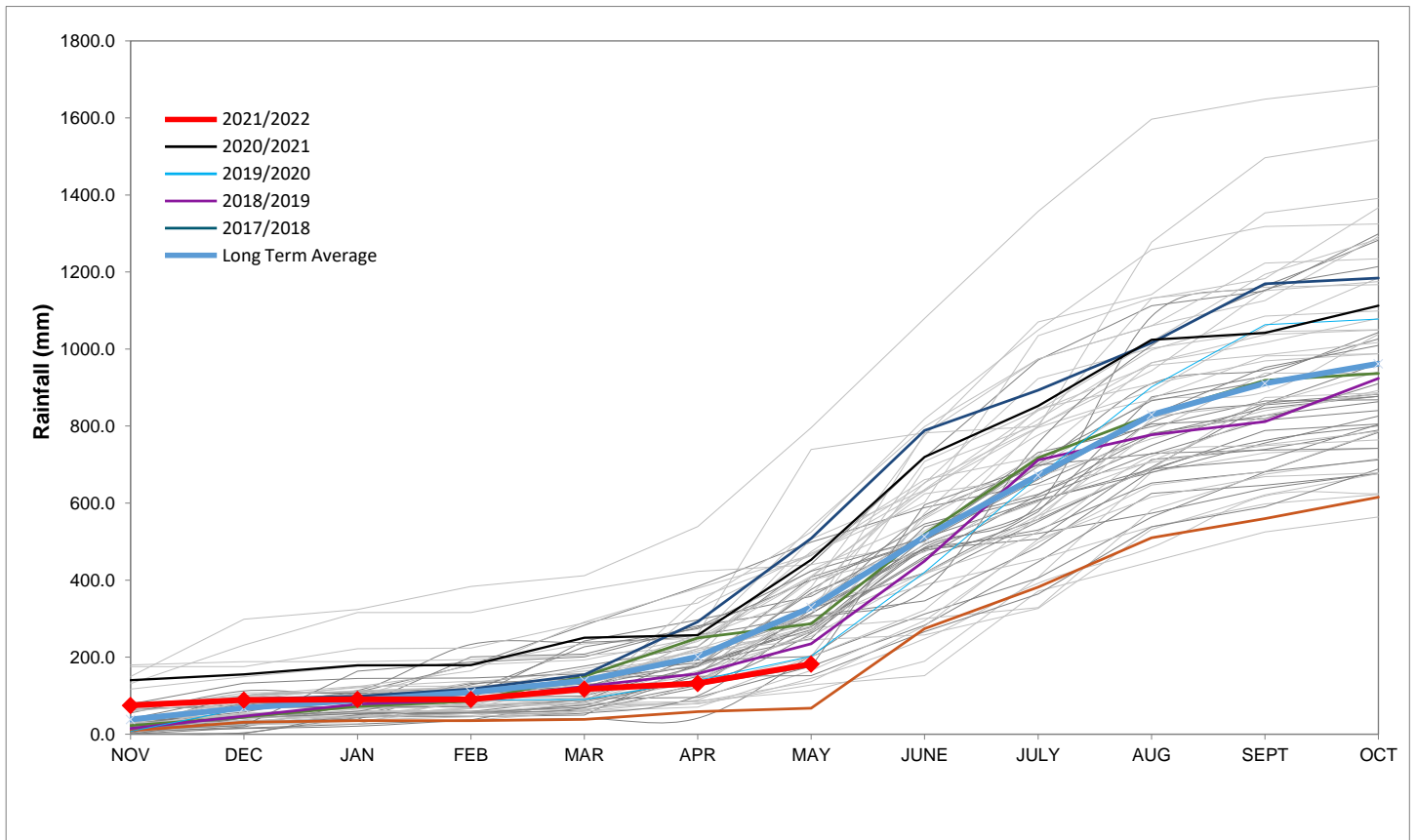
Rainfall Recorded

RAINFALL (mm)	30-May	31-May	01-Jun	02-Jun	03-Jun	04-Jun	05-Jun	Jun	
								Total*	LT Average
Blackheath Upper	0.0	0.0	0.0	0.0	0.0	0.0	0.0	0.0	73.3
Brooklands	1.0	0.0	0.0	0.0	0.0	0.0	0.0	0.0	138.7
Newlands	3.0	0.0	0.0	0.0	0.0	0.0	0.0	0.0	291.0
Steenbras	0.2	0.0	0.0	0.0	0.0	0.0	0.0	0.0	156.0
Table Mountain (Woodhead)	5.0	0.0	0.0	0.0	0.0	0.0	0.0	0.0	240.5
Theewaterskloof	0.0	0.0	0.0	0.0	0.0	0.2	0.0	0.2	72.3
Tygerberg	0.0	0.0	0.0	0.0	0.0	0.0	0.0	0.0	93.8
Voëlvlei	0.0	0.0	0.0	0.0	0.0	0.0	0.0	0.0	115.6
Wemmershoek	1.8	0.0	0.0	0.0	0.0	0.0	0.0	0.0	189.6
Wynberg	5.0	0.0	0.0	0.0	0.0	0.0	0.0	0.0	175.2

Notes: *Total/cumulative rainfall for month indicated above
LT: Long Term

Accumulated Monthly Rainfall at Wemmershoek

Note: Wemmershoek station used due to long record and mountainous location



Drinking Water Quality

SAMPLE PASS RATE

Month	Water Quality Compliance (%)	Target (%)
Feb-21	99.12	98
Mar-21	99.08	98
Apr-21	99.07	98
May-21	98.98	98
Jun-21	99.11	98
Jul-21	99.10	98
Aug-21	99.12	98
Sep-21	99.09	98
Oct-21	99.11	98
Nov-21	99.11	98
Dec-21	99.09	98
Jan-22	99.04	98
Feb-22	99.04	98
Mar-22	98.99	98
Apr-22	98.96	98

Notes:

This table shows CCT drinking water quality compliance according to the South African National Standard 241:2015. Compliance, measured against all prescribed chemical and microbiological components, consistently exceeds the very high CCT target of 98%. (Overall compliance percentages of continuous sampling and analysis are released on a monthly basis.