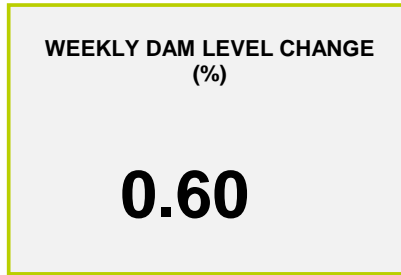
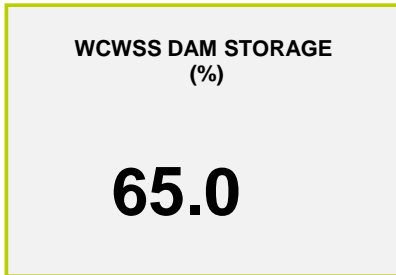
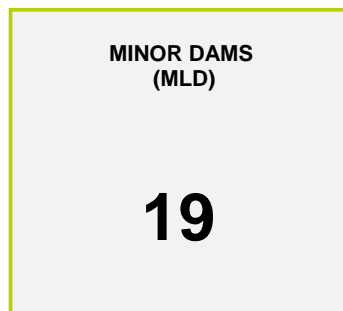
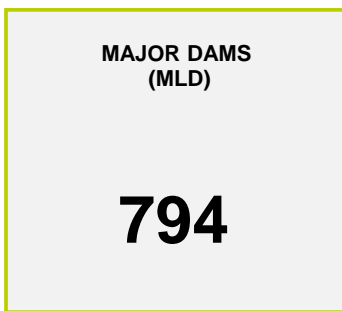




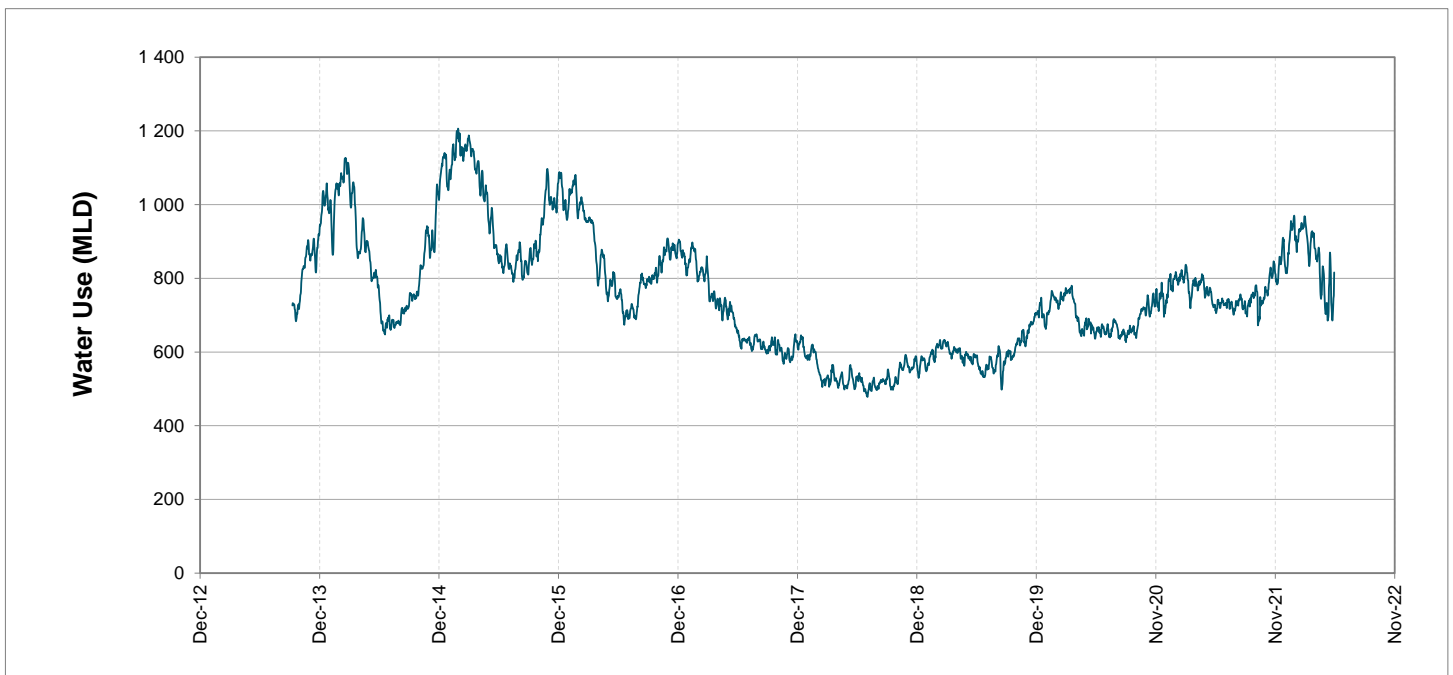
Headline Statistics



Water Production from Different Sources



Overall Water Usage Trend (2010 - Present)



WCWSS means Western Cape Water Supply System

MLD means million litres per day

More information on Water Saving and Restrictions is available on the City of Cape Town's 'ThinkWater' website

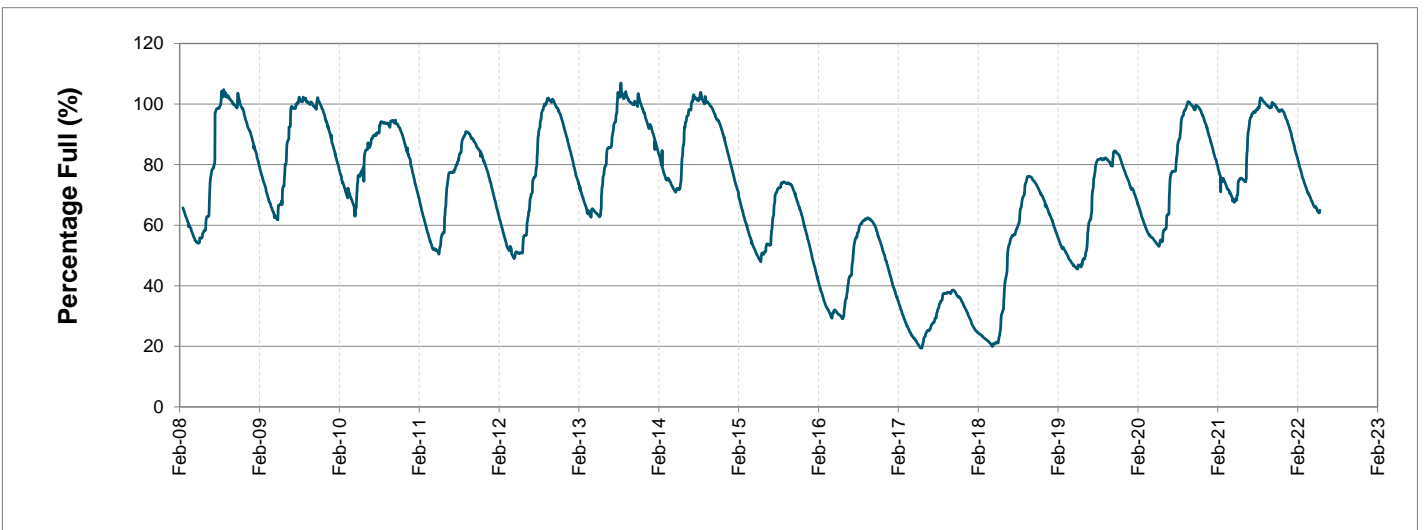
Water Stored in Major Dams (WCWSS)

Overall Percentage Full **65.0%**

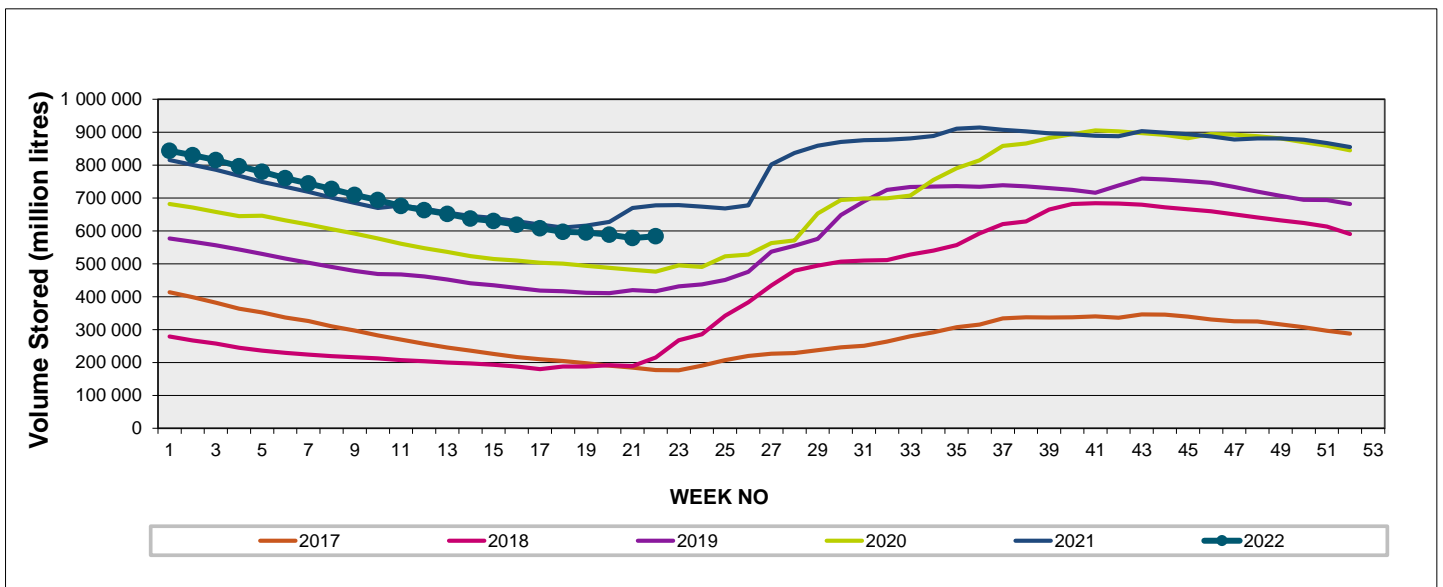
Weekly Change **0.6%**

MAJOR DAMS (WCWSS)	STORAGE						
	CAPACITY	%	%	%	%	%	%
	MI	30 May 2022	Previous week	2021	2020	2019	2018
BERG RIVER	130 010	69.7	67.6	85.9	69.2	70.7	44.5
STEENBRAS LOWER	33 517	61.1	60.7	62.7	47.9	40.0	34.5
STEENBRAS UPPER	31 767	82.9	82.7	58.5	97.0	64.6	58.8
THEEWATERSKLOOF	480 188	67.5	66.8	80.9	51.7	36.9	15.8
VOËLVLEI	164 095	56.4	57.0	61.4	49.9	55.3	17.7
WEMMERSHOEK	58 644	50.4	50.1	62.9	42.2	41.3	51.7
TOTAL STORED	898 221	583 704	578 011	677 117	491 686	417 896	223 170
% STORAGE		65.0%	64.4%	75.4%	54.7%	46.5%	24.8%

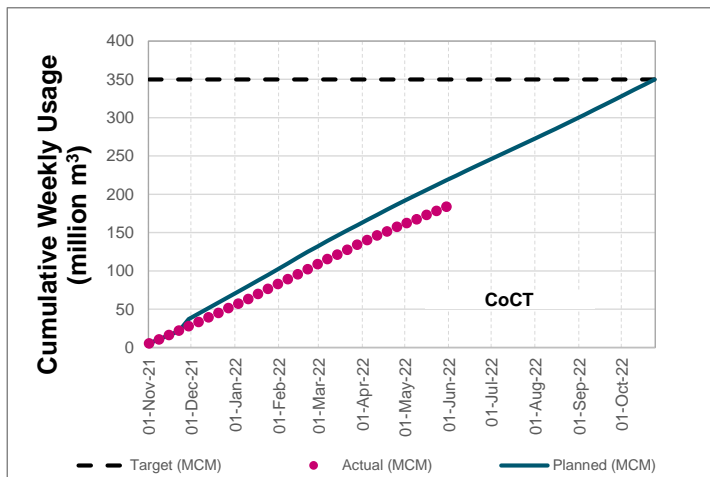
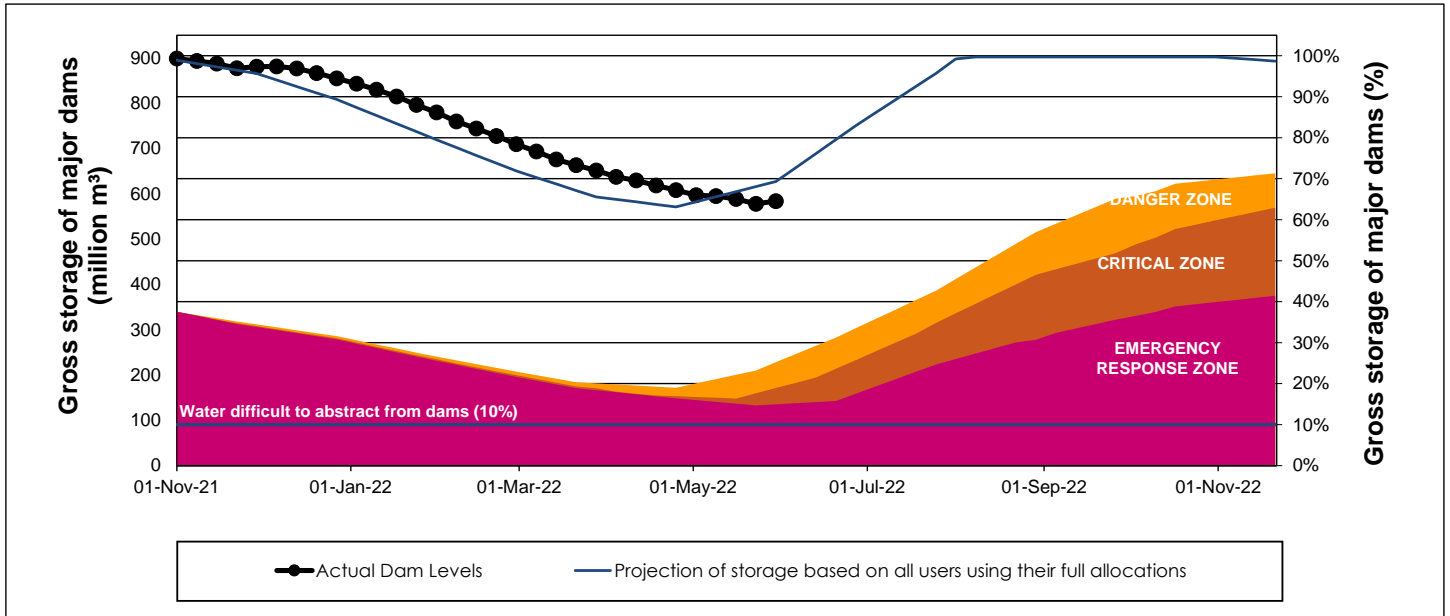
WCWSS Storage Record (2008 - Present)



WCWSS Comparative Storage Graph



WCWSS Dam Storage and Water Use Tracking



Water Stored in Minor Dams

Overall Percentage Full **54.3**

Weekly Change **6.06**

MINOR DAMS	STORAGE						
	CAPACITY	%	%	%	%	%	%
	MI	30 May 2022	Previous week	2021	2020	2019	2018
ALEXANDRA (Table Mountain)	126	59.8	55.6	9.2	43.5	0.0	89.2
DE VILLIERS (Table Mountain)	243	75.2	69.8	61.0	100.7	65.2	54.8
HELY-HUTCHINSON (Table Mount)	925	54.6	31.7	41.3	38.1	17.5	80.9
KLEINPLAATS (Simon's Town)	1 368	41.8	43.6	44.9	36.5	43.0	37.1
LAND-EN-ZEEZICHT (Helderberg)	451	73.8	74.0	70.3	63.4	96.8	90.9
LEWIS GAY (Simon's Town)	182	3.8	0.0	61.1	12.7	0.0	76.4
VICTORIA (Table Mountain)	128	65.9	52.3	16.1	88.5	9.1	26.3
WOODHEAD (Table Mountain)	954	65.6	61.9	65.7	100.5	59.5	63.8
Total Stored	4 377	2377.7	2112.3	2208.6	2524.7	1917.6	2683.8
Percentages stored		54.3	48.3	50.5	57.7	43.8	61.3

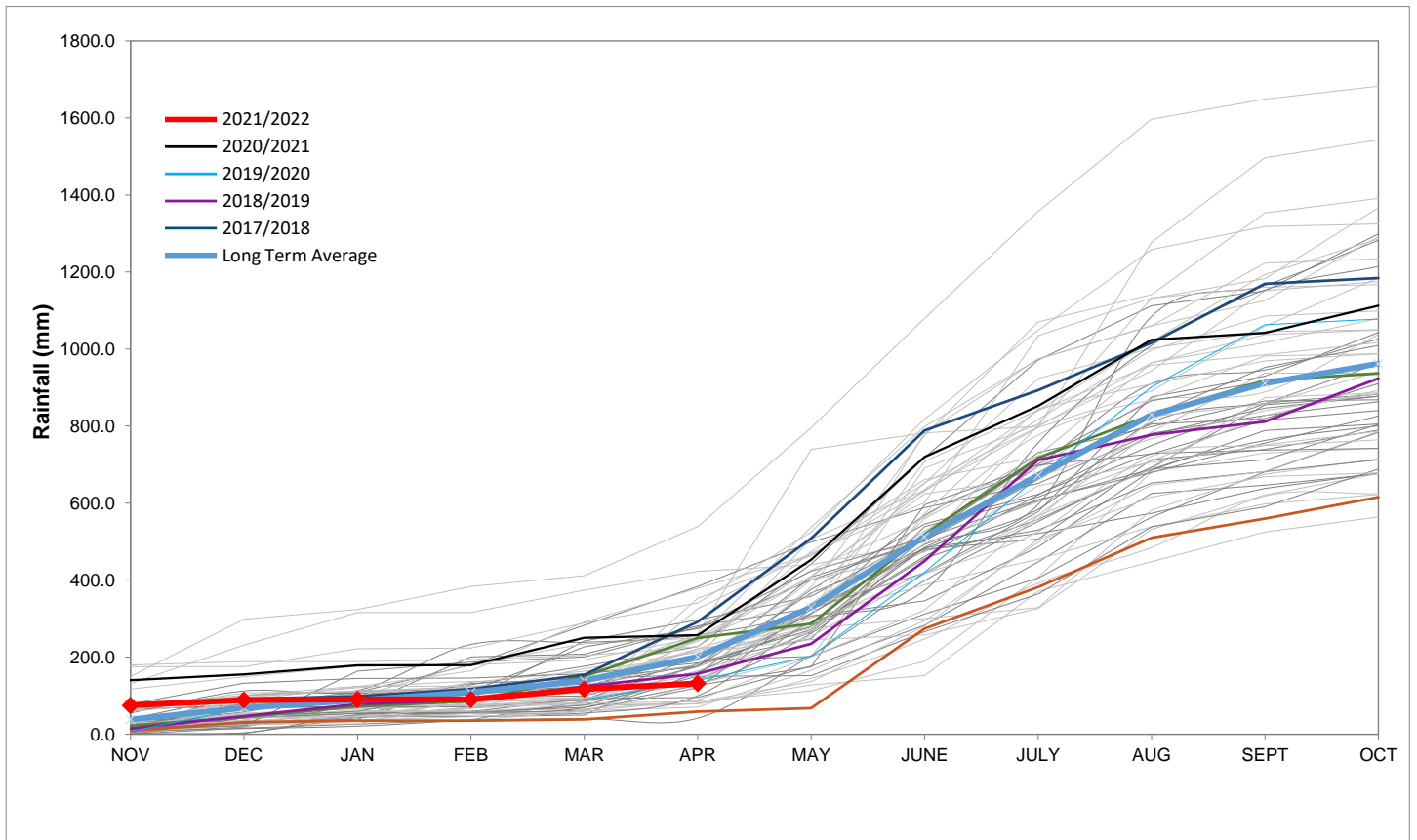
Rainfall Recorded

RAINFALL (mm)	23-May	24-May	25-May	26-May	27-May	28-May	29-May	May	
								Total*	LT Average
Blackheath Upper	0.0	4.0	1.5	0.0	0.0	17.0	6.0	47.5	55.7
Brooklands	3.0	10.0	3.0	0.0	0.0	22.0	0.0	65.0	107.1
Newlands	0.0	30.0	9.0	0.0	0.0	46.0	1.7	147.7	210.0
Steenbras	0.0	12.5	4.0	0.0	0.0	39.0	0.0	120.5	116.9
Table Mountain (Woodhead)	29.5	37.0	9.0	0.0	0.3	41.0		229.2	188.7
Theewaterskloof	0.0	0.0	0.0	0.0	0.0	22.0	1.4	49.7	48.5
Tygerberg	0.0	6.9	1.8	0.0	0.0	22.5	4.3	49.9	60.0
Voëlvlei	0.0	1.0	0.3	0.1	0.0	1.2	9.0	22.8	69.2
Wemmershoek	0.0	1.0	1.6	0.0	0.0	26.2	4.6	48.6	120.1
Wynberg	0.0	0.0	0.0	0.0	0.0	27.0	0.0	51.8	142.8

Notes: *Total/cummulative rainfall for month indicated above
LT: Long Term

Accumulated Monthly Rainfall at Wemmershoek

Note: Wemmershoek station used due to long record and mountainous location



Drinking Water Quality

SAMPLE PASS RATE

Month	Water Quality Compliance (%)	Target (%)
Feb-21	99.12	98
Mar-21	99.08	98
Apr-21	99.07	98
May-21	98.98	98
Jun-21	99.11	98
Jul-21	99.10	98
Aug-21	99.12	98
Sep-21	99.09	98
Oct-21	99.11	98
Nov-21	99.11	98
Dec-21	99.09	98
Jan-22	99.04	98
Feb-22	99.04	98
Mar-22	98.99	98
Apr-22	98.96	98

Notes:

This table shows CCT drinking water quality compliance according to the South African National Standard 241:2015. Compliance, measured against all prescribed chemical and microbiological components, consistently exceeds the very high CCT target of 98%. (Overall compliance percentages of continuous sampling and analysis are released on a monthly basis.