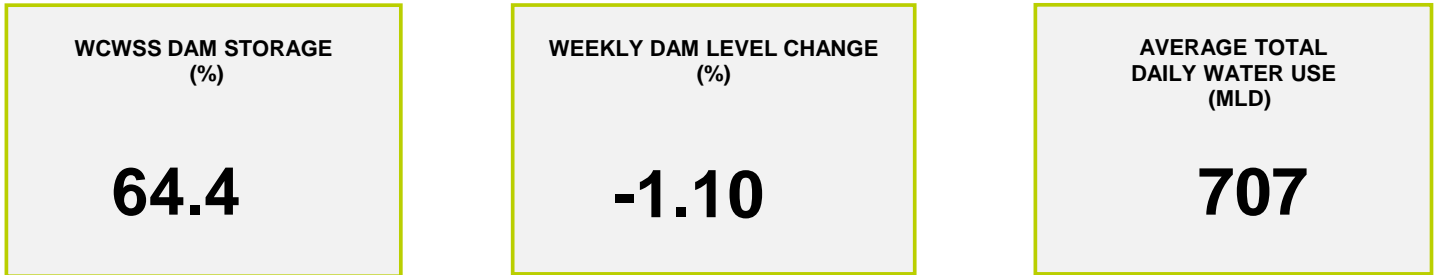
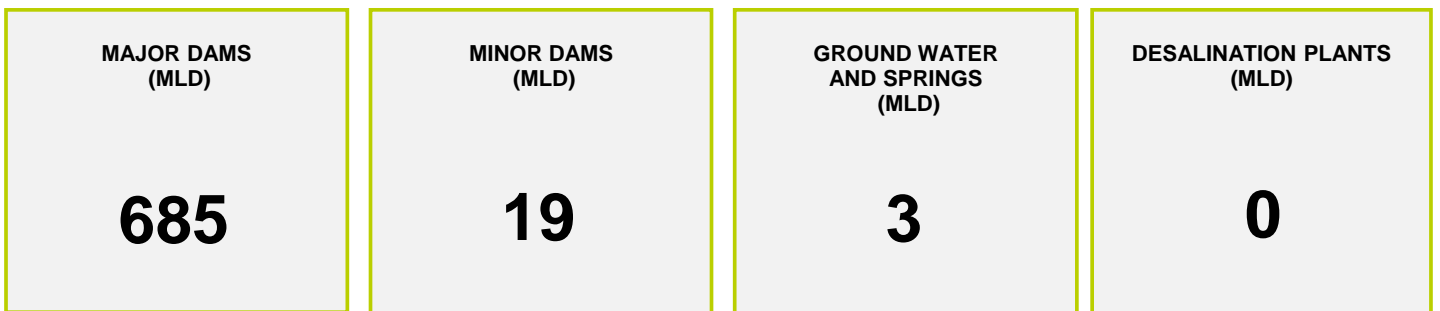




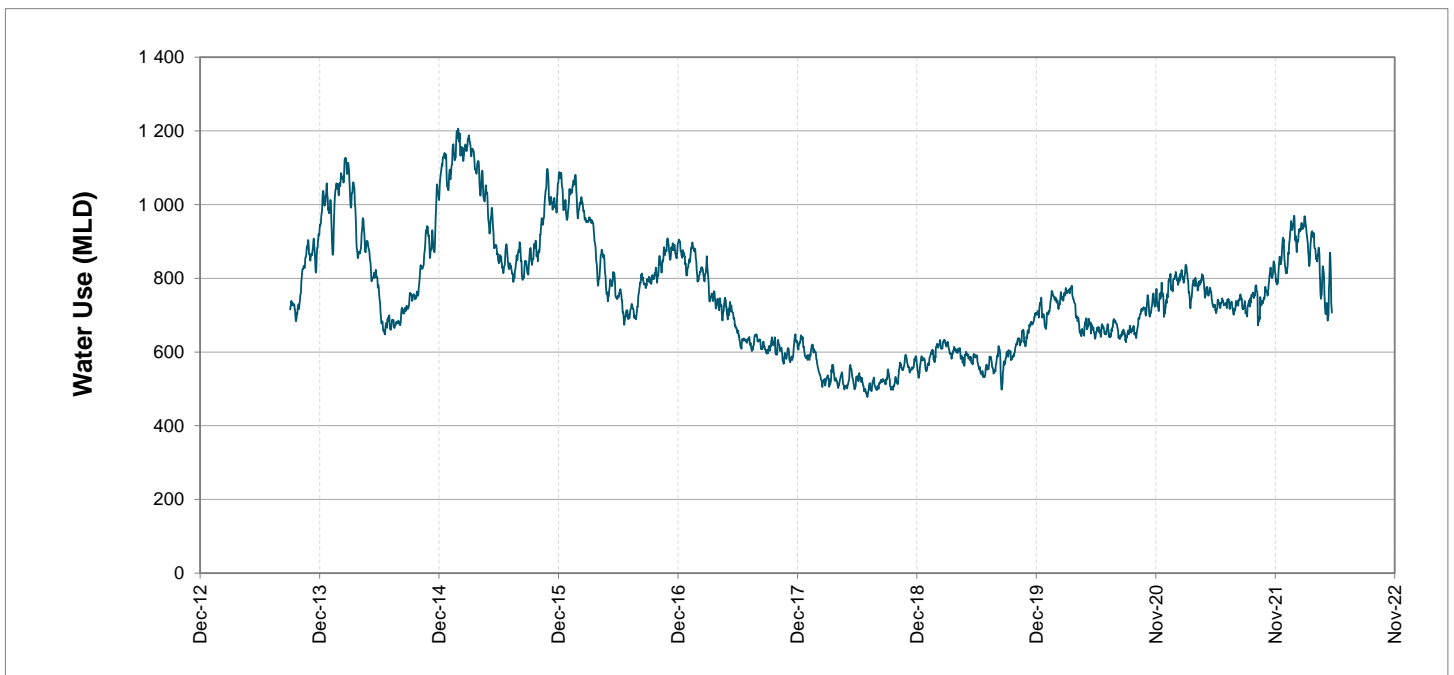
Headline Statistics



Water Production from Different Sources



Overall Water Usage Trend (2010 - Present)



WCWSS means Western Cape Water Supply System

MLD means million litres per day

More information on Water Saving and Restrictions is available on the City of Cape Town's 'ThinkWater' website

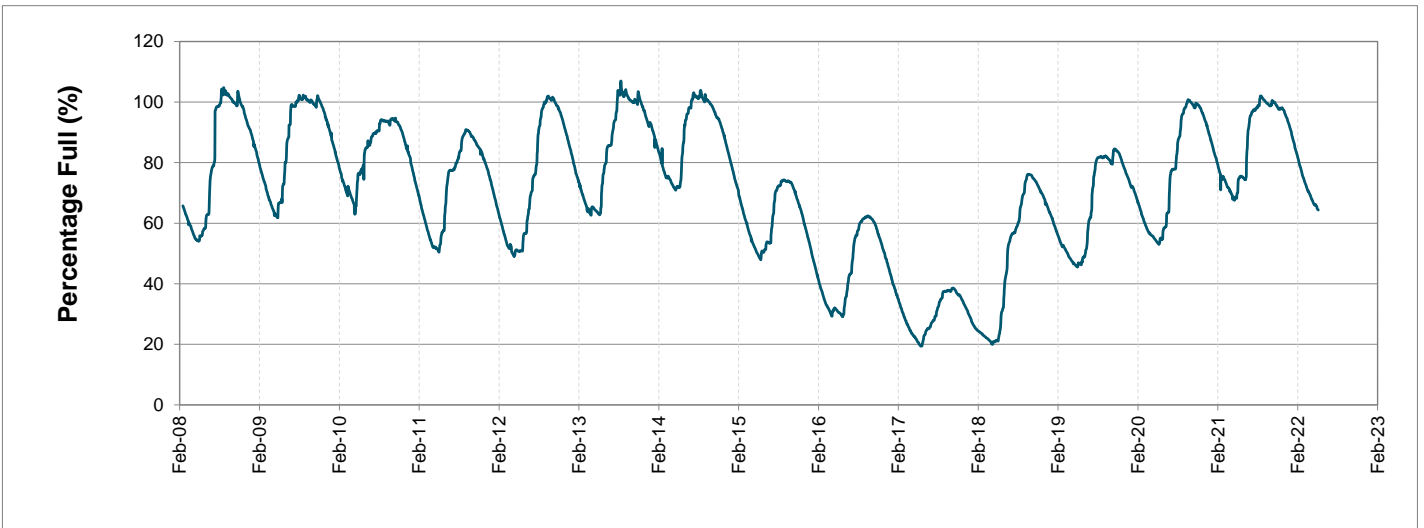
Water Stored in Major Dams (WCWSS)

Overall Percentage Full **64.4%**

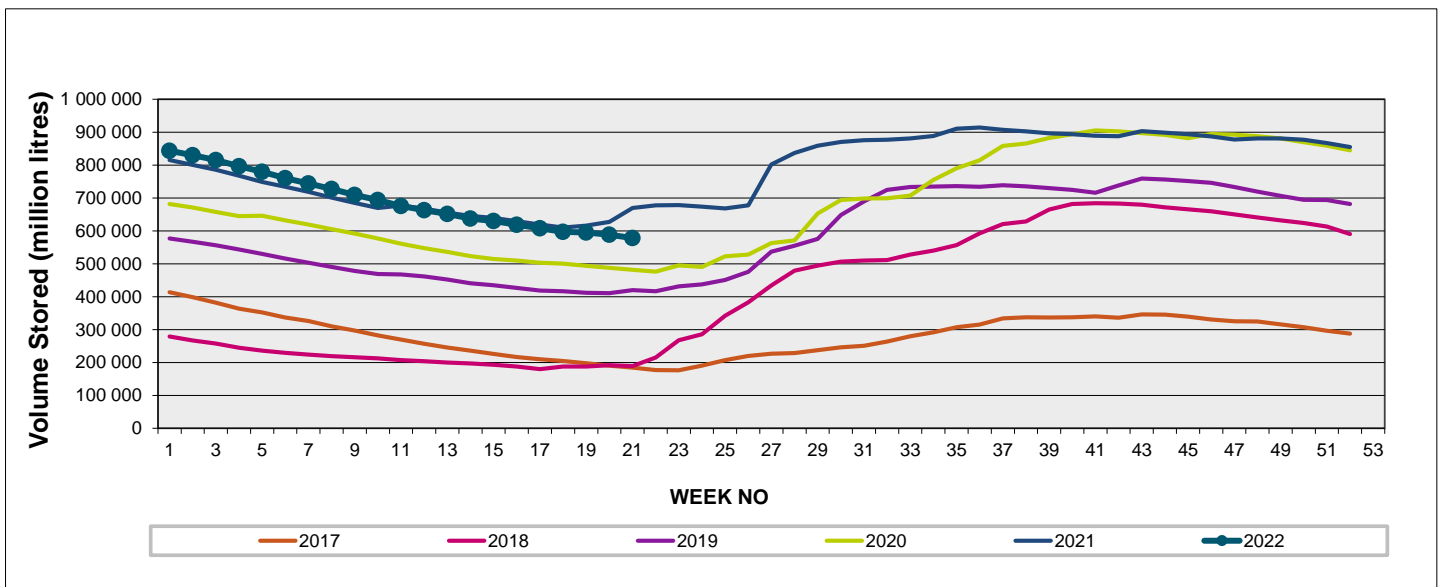
Weekly Change **-1.1%**

MAJOR DAMS (WCWSS)	STORAGE						
	CAPACITY	%	%	%	%	%	%
	MI	23 May 2022	Previous week	2021	2020	2019	2018
BERG RIVER	130 010	67.6	67.9	83.8	65.0	70.6	40.9
STEENBRAS LOWER	33 517	60.7	61.8	62.8	46.8	40.7	33.5
STEENBRAS UPPER	31 767	82.7	84.4	57.2	96.4	66.7	56.8
THEEWATERSKLOOF	480 188	66.8	68.4	80.3	50.0	37.2	13.3
VOËLVLEI	164 095	57.0	57.6	59.9	49.9	55.4	14.5
WEMMERSHOEK	58 644	50.1	51.2	62.9	42.0	42.7	49.3
TOTAL STORED	898 221	578 011	588 570	668 863	477 093	421 239	198 869
% STORAGE		64.4%	65.5%	74.5%	53.1%	46.9%	22.1%

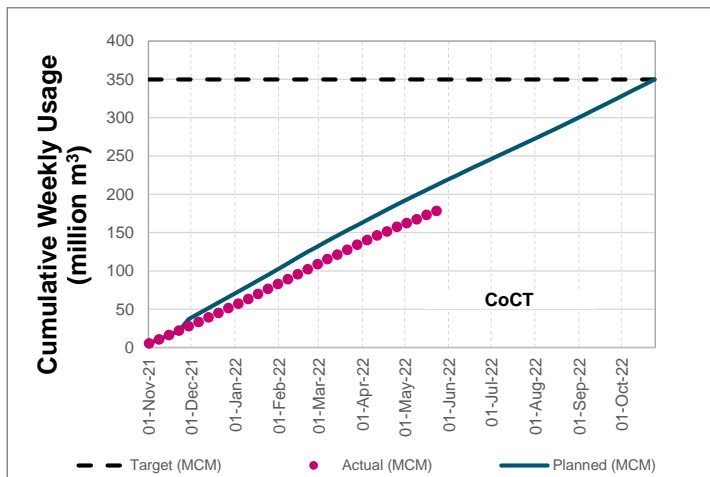
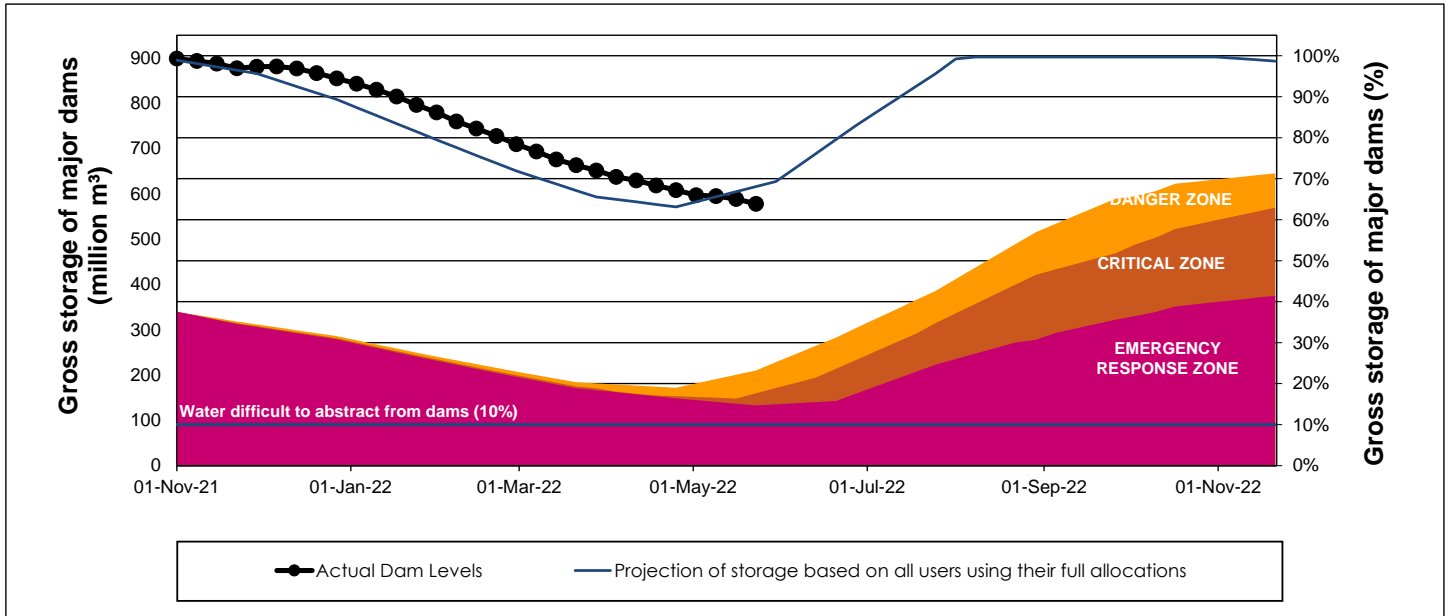
WCWSS Storage Record (2008 - Present)



WCWSS Comparative Storage Graph



WCWSS Dam Storage and Water Use Tracking



Water Stored in Minor Dams

Overall Percentage Full **48.3**

Weekly Change **0.34**

MINOR DAMS	STORAGE						
	CAPACITY	%	%	%	%	%	%
	MI	23 May 2022	Previous week	2021	2020	2019	2018
ALEXANDRA (Table Mountain)	126	55.6	54.6	6.7	33.2	0.0	78.1
DE VILLIERS (Table Mountain)	243	69.8	68.9	57.9	93.6	64.7	47.9
HELY-HUTCHINSON (Table Mount)	925	31.7	27.9	32.3	12.6	15.6	66.2
KLEINPLAATS (Simon's Town)	1 368	43.6	44.9	45.4	36.5	43.5	37.1
LAND-EN-ZEEZICHT (Helderberg)	451	74.0	74.5	69.8	61.9	98.9	90.7
LEWIS GAY (Simon's Town)	182	0.0	0.0	57.4	4.6	0.0	72.3
VICTORIA (Table Mountain)	128	52.3	50.8	11.4	72.4	8.6	21.1
WOODHEAD (Table Mountain)	954	61.9	62.6	68.5	97.7	58.9	55.8
Total Stored	4 377	2112.3	2097.6	2133.5	2189.4	1908.2	2425.9
Percentages stored		48.3	47.9	48.7	50.0	43.6	55.4

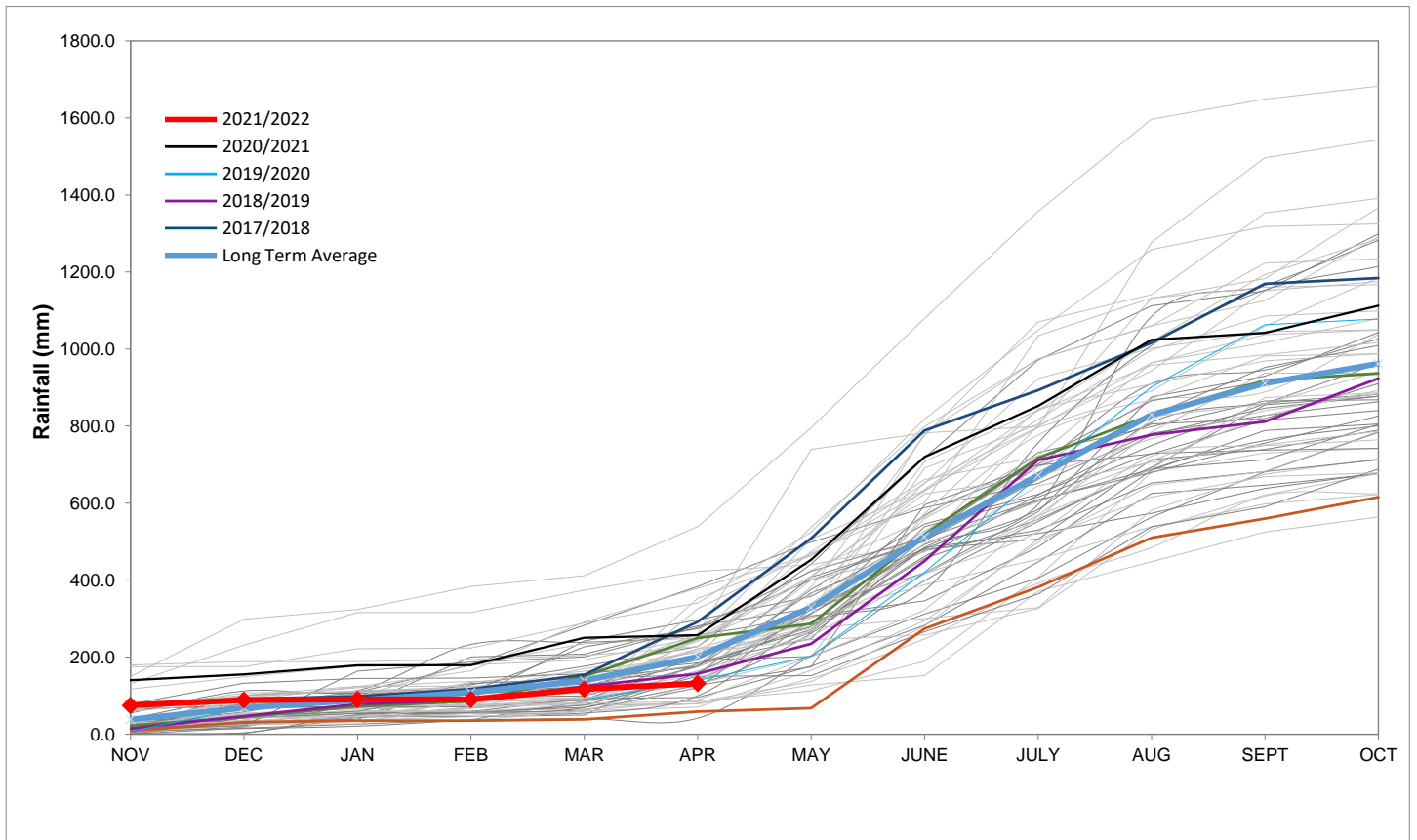
Rainfall Recorded

RAINFALL (mm)	16-May	17-May	18-May	19-May	20-May	21-May	22-May	May	
								Total*	LT Average
Blackheath Upper	0.0	0.0	3.0	0.0	0.0	0.0	0.0	19.0	55.7
Brooklands	0.0	0.0	6.0	3.0	1.0	0.0	0.0	27.0	107.1
Newlands	0.0	0.0	9.5	1.5	1.5	0.0	0.0	61.0	210.0
Steenbras	0.0	0.0	15.0	2.0	0.0	0.0	0.0	65.0	116.9
Table Mountain (Woodhead)	0.0	4.0	23.5	0.6	5.0	0.0		112.4	188.7
Theewaterskloof	0.0	0.0	7.2	0.4	0.0	0.0	0.0	26.3	48.5
Tygerberg	0.0	0.0	5.2	0.0	0.0	0.0	0.0	14.4	60.0
Voëlvlei	0.0	0.0	8.5	0.0	0.0	0.0	0.0	11.2	69.2
Wemmershoek	0.0	0.0	8.7	0.5	0.0	0.0	0.0	15.2	120.1
Wynberg	0.0	0.0	5.0	0.0	0.0	0.0	0.0	24.8	142.8

Notes: *Total/cummulative rainfall for month indicated above
LT: Long Term

Accumulated Monthly Rainfall at Wemmershoek

Note: Wemmershoek station used due to long record and mountainous location



Drinking Water Quality

SAMPLE PASS RATE

Month	Water Quality Compliance (%)	Target (%)
Feb-21	99.12	98
Mar-21	99.08	98
Apr-21	99.07	98
May-21	98.98	98
Jun-21	99.11	98
Jul-21	99.10	98
Aug-21	99.12	98
Sep-21	99.09	98
Oct-21	99.11	98
Nov-21	99.11	98
Dec-21	99.09	98
Jan-22	99.04	98
Feb-22	99.04	98
Mar-22	98.99	98
Apr-22	98.96	98

Notes:

This table shows CCT drinking water quality compliance according to the South African National Standard 241:2015. Compliance, measured against all prescribed chemical and microbiological components, consistently exceeds the very high CCT target of 98%. (Overall compliance percentages of continuous sampling and analysis are released on a monthly basis.