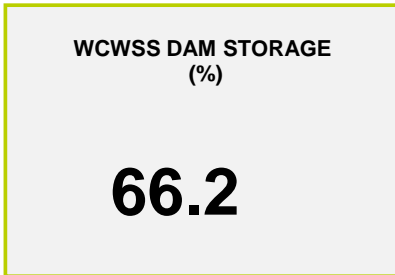
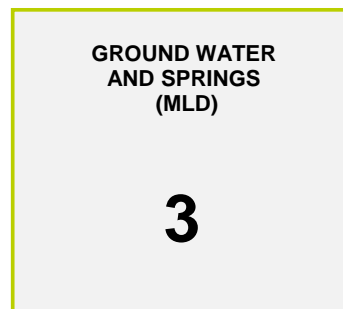
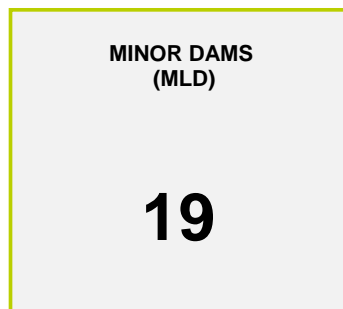
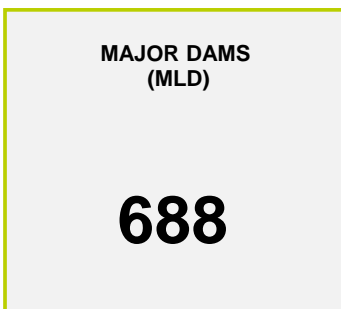




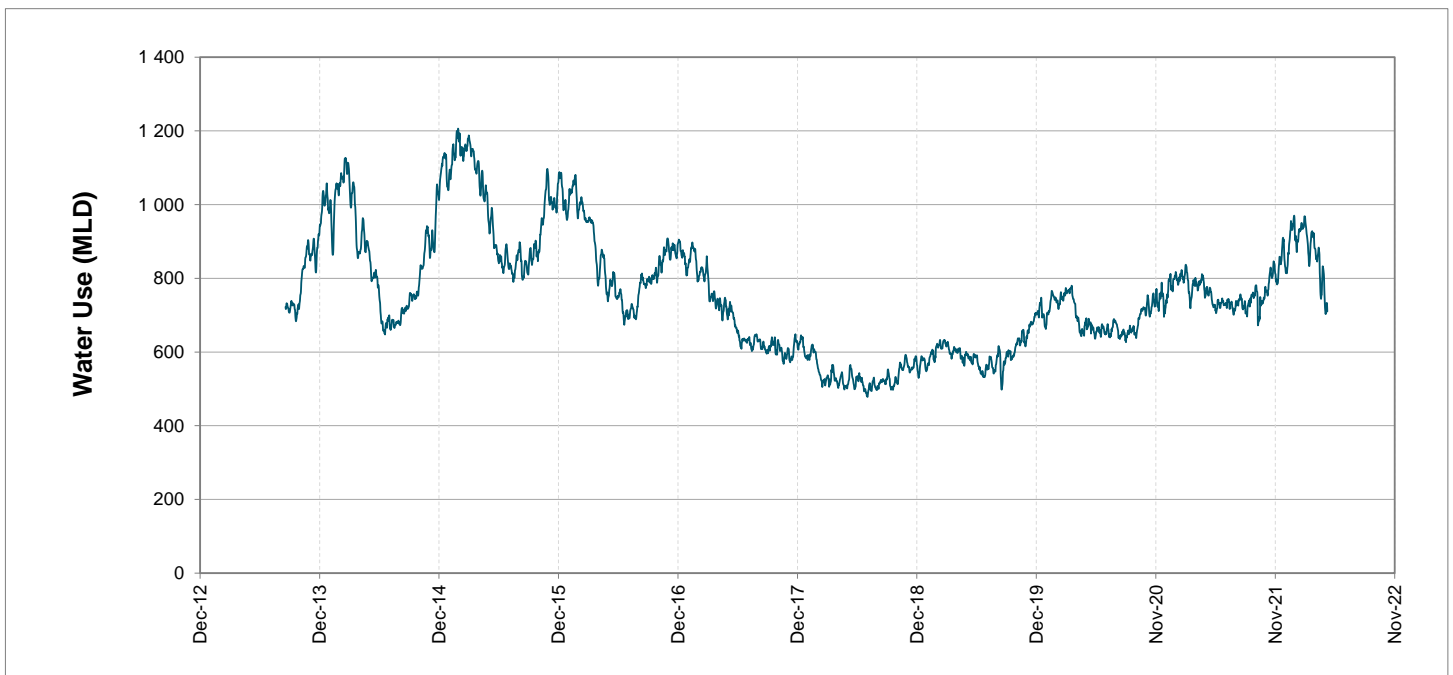
Headline Statistics



Water Production from Different Sources



Overall Water Usage Trend (2010 - Present)



WCWSS means Western Cape Water Supply System

MLD means million litres per day

More information on Water Saving and Restrictions is available on the City of Cape Town's 'ThinkWater' website

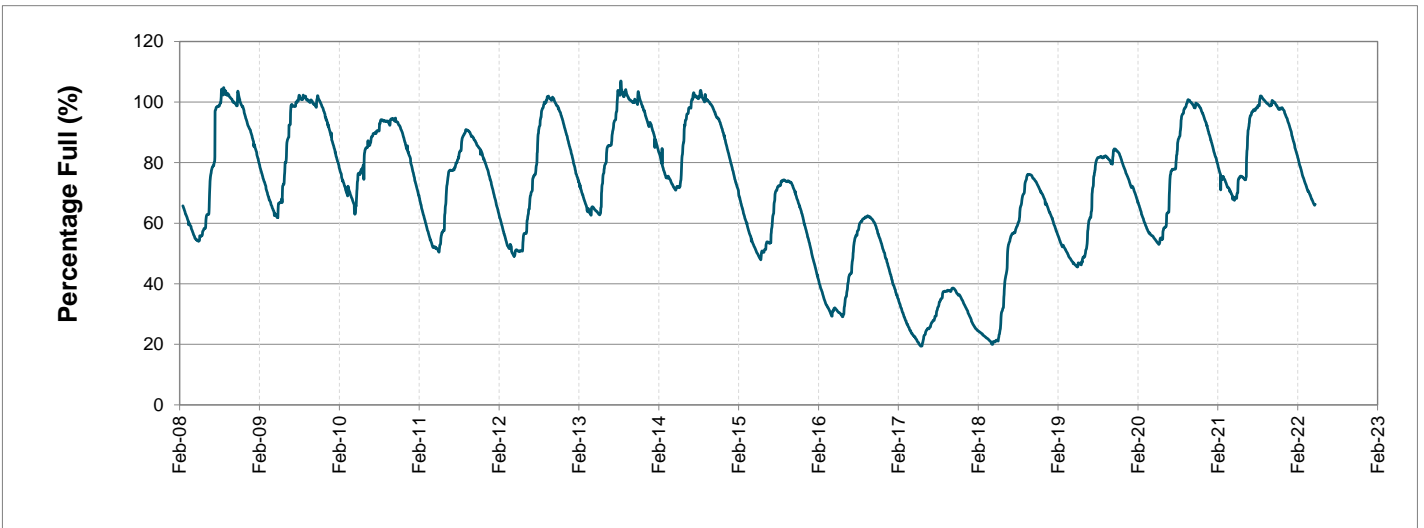
Water Stored in Major Dams (WCWSS)

Overall Percentage Full **66.2%**

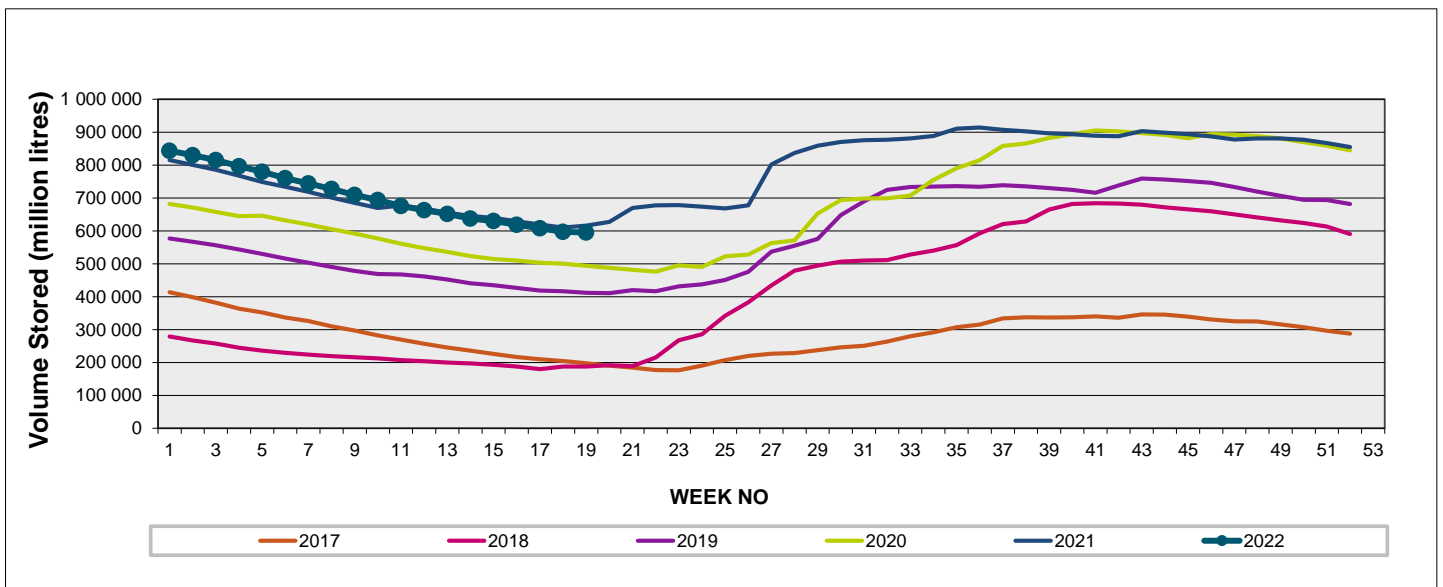
Weekly Change **-0.3%**

MAJOR DAMS (WCWSS)	STORAGE						
	CAPACITY	%	%	%	%	%	%
	MI	09 May 2022	Previous week	2021	2020	2019	2018
BERG RIVER	130 010	68.6	69.5	72.1	66.3	68.0	39.0
STEENBRAS LOWER	33 517	62.7	63.7	57.7	50.4	39.3	36.8
STEENBRAS UPPER	31 767	85.2	87.0	54.3	96.5	66.1	60.0
THEEWATERSKLOOF	480 188	69.0	68.4	73.8	51.0	36.3	11.4
VOËLVLEI	164 095	58.2	59.7	59.2	51.2	55.7	14.4
WEMMERSHOEK	58 644	52.0	53.3	59.0	45.6	44.7	48.4
TOTAL STORED	898 221	594 846	597 070	616 605	489 322	414 394	188 857
% STORAGE		66.2%	66.5%	68.6%	54.5%	46.1%	21.0%

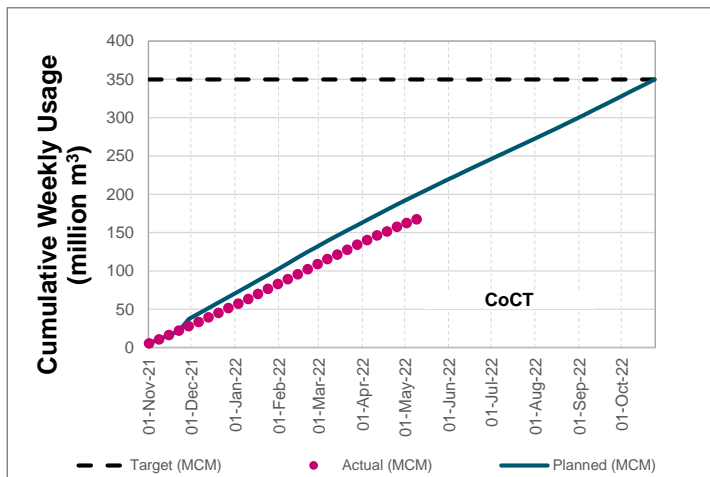
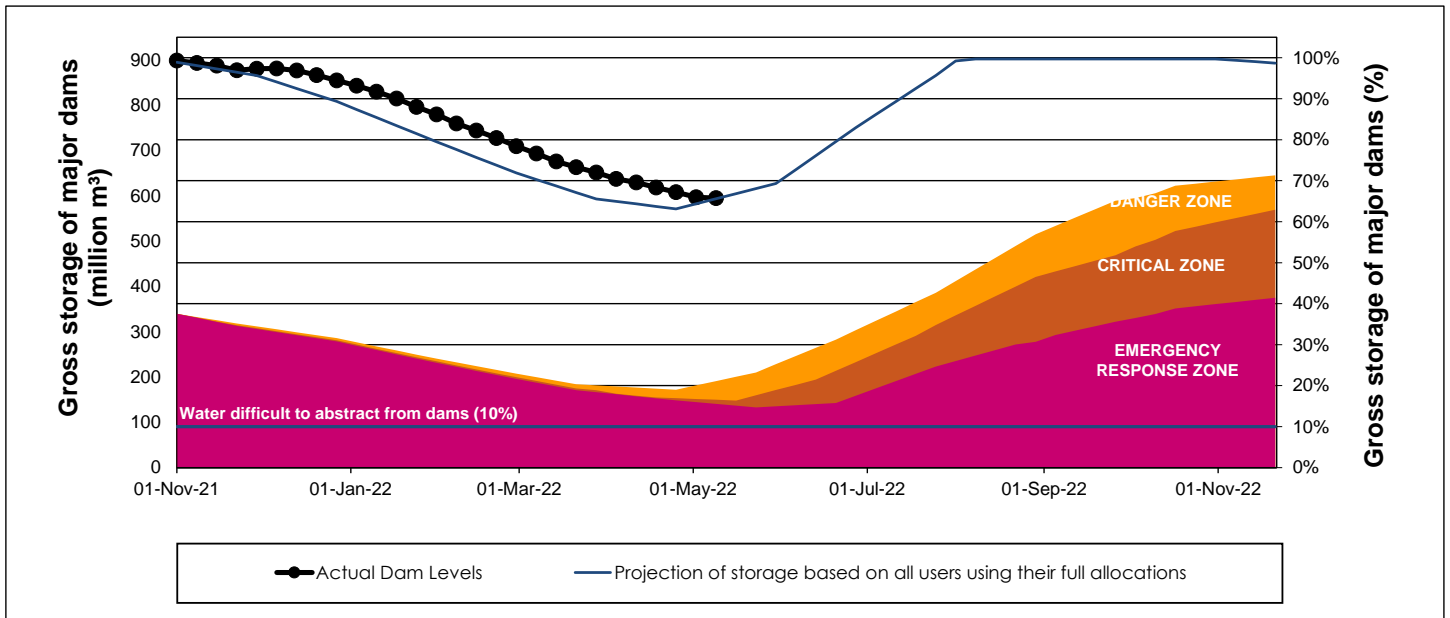
WCWSS Storage Record (2008 - Present)



WCWSS Comparative Storage Graph



WCWSS Dam Storage and Water Use Tracking



Water Stored in Minor Dams

Overall Percentage Full **48.8**

Weekly Change **-0.53**

MINOR DAMS	STORAGE						
	CAPACITY	%	%	%	%	%	%
	MI	09 May 2022	Previous week	2021	2020	2019	2018
ALEXANDRA (Table Mountain)	126	53.8	54.7	0.0	34.2	0.0	72.8
DE VILLIERS (Table Mountain)	243	68.2	67.5	53.2	94.6	60.5	50.0
HELY-HUTCHINSON (Table Mount)	925	19.3	18.6	0.0	12.6	0.0	70.1
KLEINPLAATS (Simon's Town)	1 368	47.4	49.4	46.8	38.0	44.2	38.2
LAND-EN-ZEEZICHT (Helderberg)	451	74.8	75.0	66.3	60.8	97.9	89.3
LEWIS GAY (Simon's Town)	182	0.0	0.0	42.0	0.0	0.0	65.8
VICTORIA (Table Mountain)	128	48.7	49.4	0.0	75.3	0.0	29.1
WOODHEAD (Table Mountain)	954	71.7	71.9	73.8	98.4	53.9	58.9
Total Stored	4 377	2134.3	2157.3	1826.5	2210.1	1700.3	2497.4
Percentages stored		48.8	49.3	41.7	50.5	38.8	57.1

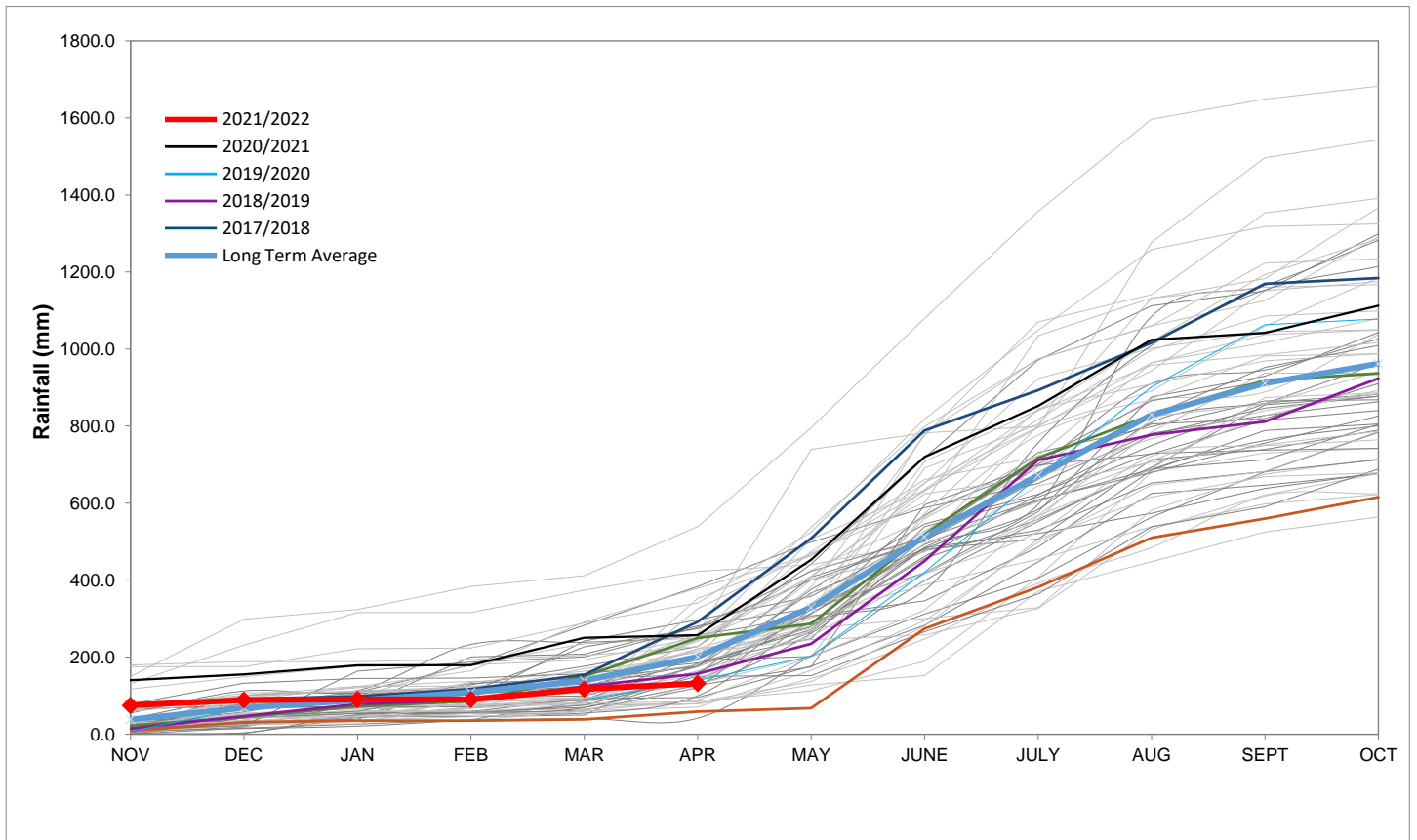
Rainfall Recorded

RAINFALL (mm)	02-May	03-May	04-May	05-May	06-May	07-May	08-May	May	
								Total*	LT Average
Blackheath Upper	0.0	0.0	0.0	0.0	16.0	0.0	0.0	16.0	55.7
Brooklands	0.0	0.0	0.0	4.0	0.0	0.0	0.0	4.0	107.1
Newlands	0.0	0.0	0.0	0.0	12.0	0.0	0.0	12.0	210.0
Steenbras	0.0	0.0	0.0	0.0	26.5	0.0	0.0	26.5	116.9
Table Mountain (Woodhead)	0.0	0.0	0.0	9.5	20.5	0.0		30.0	188.7
Theewaterskloof	0.0	0.0	0.0	0.0	16.3	1.8	0.0	18.1	48.5
Tygerberg	0.0	0.0	0.0	0.0	9.2	0.0	0.0	9.2	60.0
Voëlvlei	0.0	0.0	0.0	0.0	0.5	0.0	0.0	0.5	69.2
Wemmershoek	0.0	0.0	0.0	0.0	1.5	0.0	0.0	1.5	120.1
Wynberg	0.0	0.0	0.0	0.0	12.0	0.0	0.0	12.0	142.8

Notes: *Total/cumulative rainfall for month indicated above
LT: Long Term

Accumulated Monthly Rainfall at Wemmershoek

Note: Wemmershoek station used due to long record and mountainous location



Drinking Water Quality

SAMPLE PASS RATE

Month	Water Quality Compliance (%)	Target (%)
Jan-21	99.16	98
Feb-21	99.12	98
Mar-21	99.08	98
Apr-21	99.07	98
May-21	98.98	98
Jun-21	99.11	98
Jul-21	99.10	98
Aug-21	99.12	98
Sep-21	99.09	98
Oct-21	99.11	98
Nov-21	99.11	98
Dec-21	99.09	98
Jan-22	99.04	98
Feb-22	99.04	98
Mar-22	98.99	98

Notes:

This table shows CCT drinking water quality compliance according to the South African National Standard 241:2015. Compliance, measured against all prescribed chemical and microbiological components, consistently exceeds the very high CCT target of 98%. (Overall compliance percentages of continuous sampling and analysis are released on a monthly basis.