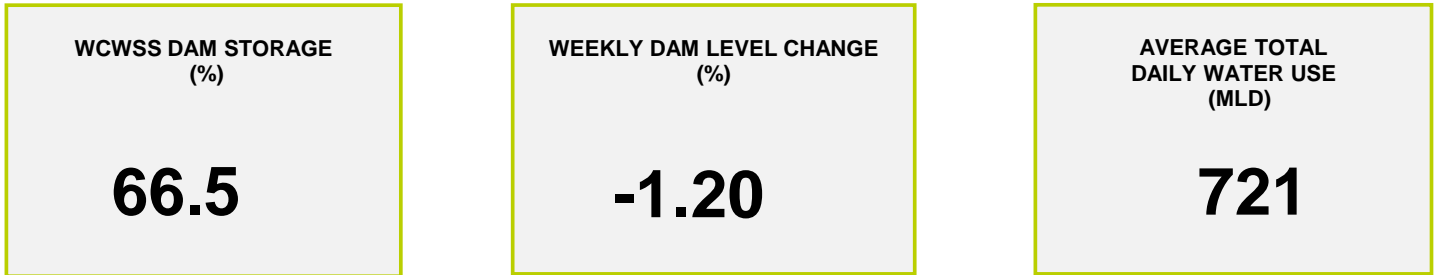
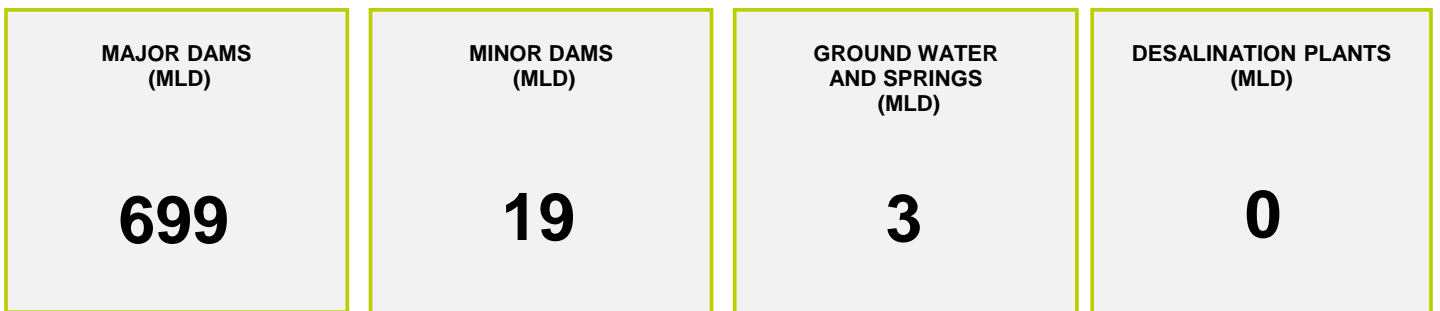




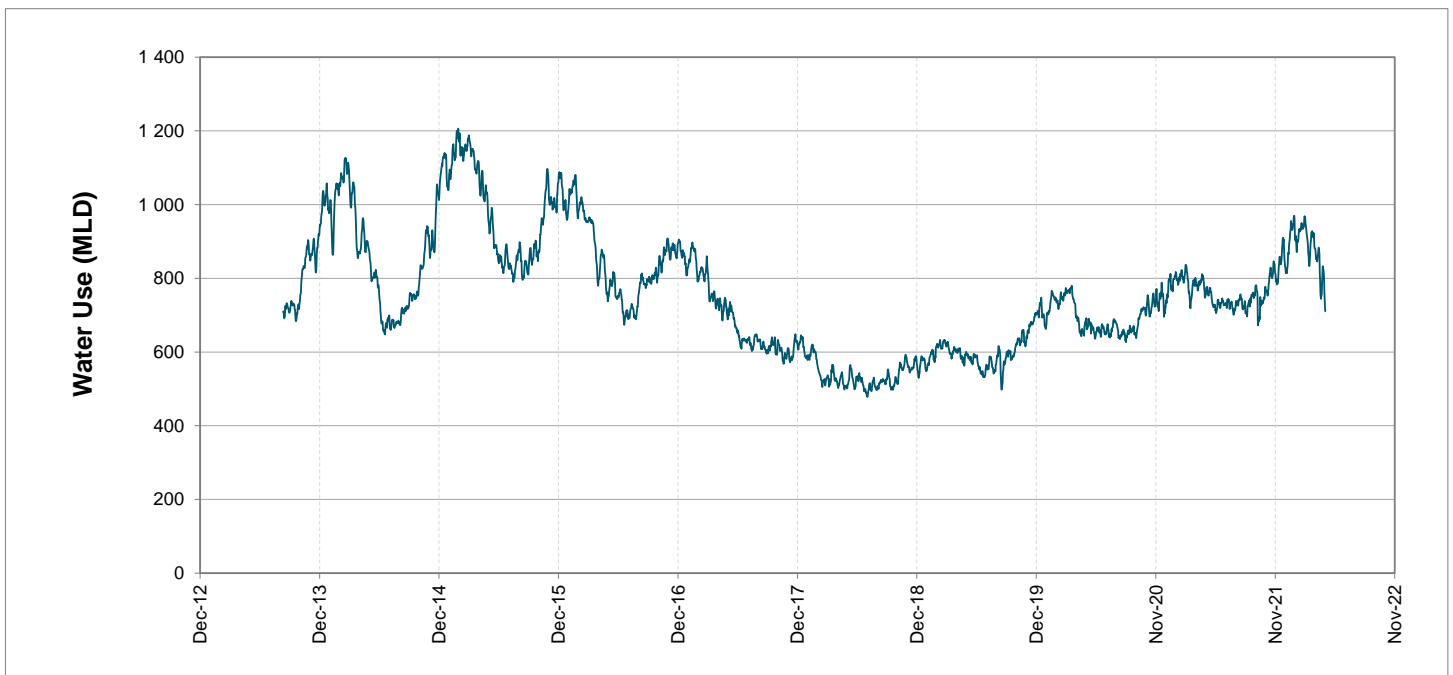
Headline Statistics



Water Production from Different Sources



Overall Water Usage Trend (2010 - Present)



WCWSS means Western Cape Water Supply System

MLD means million litres per day

More information on Water Saving and Restrictions is available on the City of Cape Town's 'ThinkWater' website

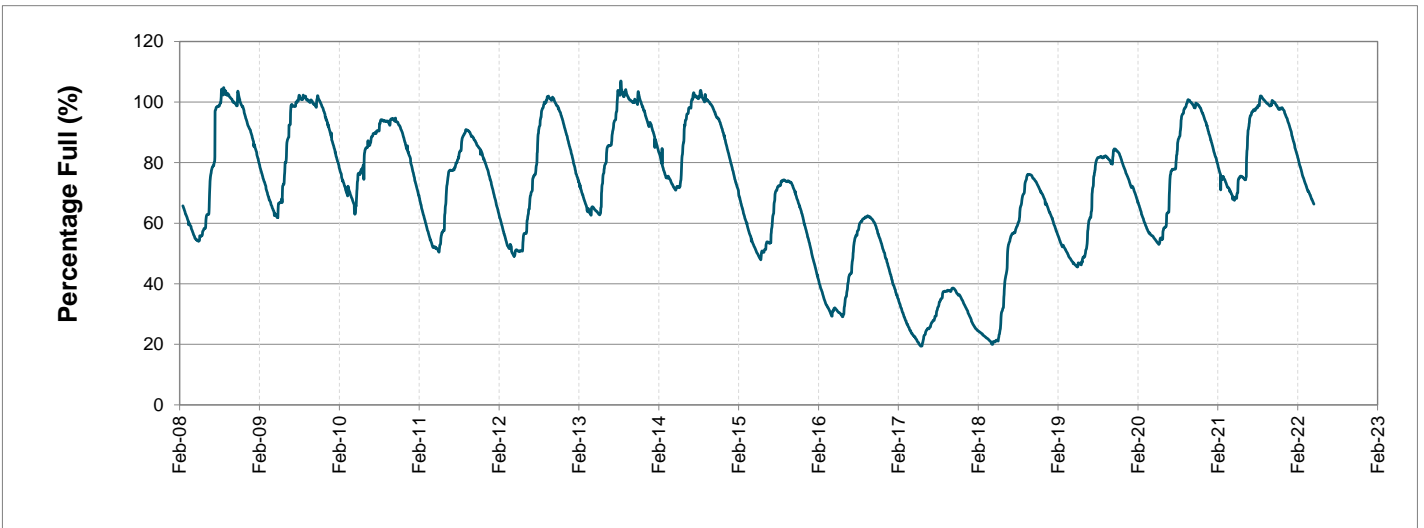
Water Stored in Major Dams (WCWSS)

Overall Percentage Full **66.5%**

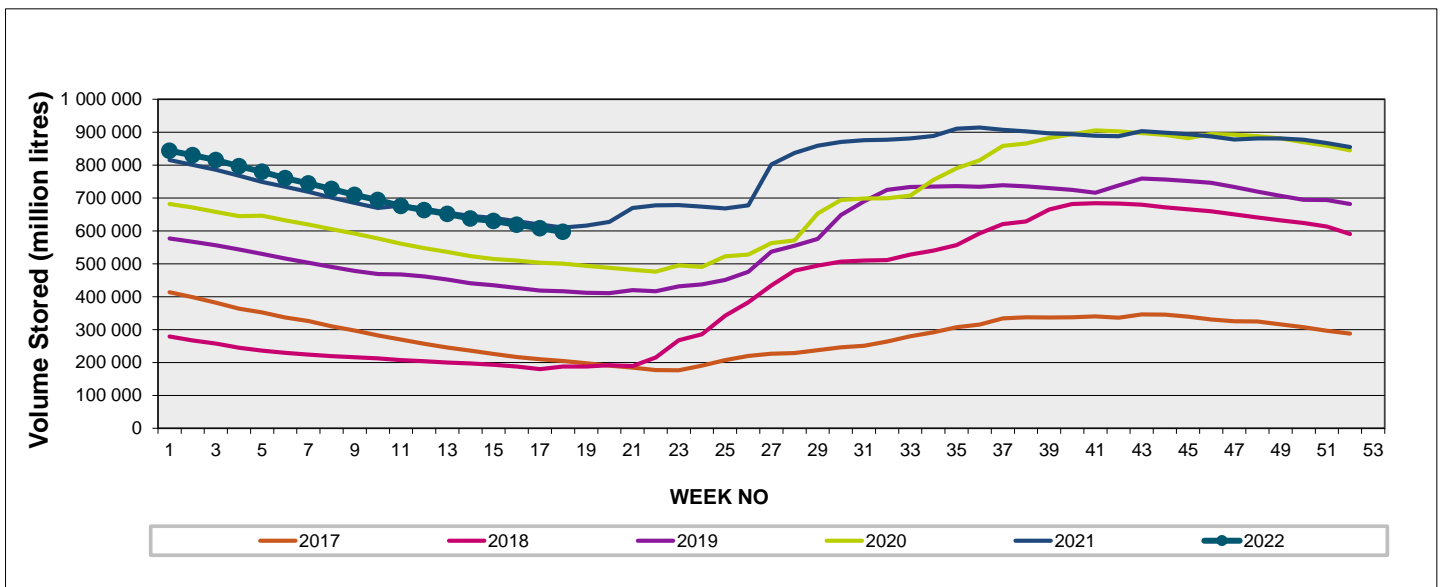
Weekly Change **-1.2%**

MAJOR DAMS (WCWSS)	STORAGE						
	CAPACITY	%	%	%	%	%	%
	MI	02 May 2022	Previous week	2021	2020	2019	2018
BERG RIVER	130 010	69.5	70.4	71.0	66.9	67.8	38.3
STEENBRAS LOWER	33 517	63.7	65.3	55.5	52.1	40.4	38.5
STEENBRAS UPPER	31 767	87.0	90.7	53.4	96.5	68.1	61.0
THEEWATERSKLOOF	480 188	68.4	69.6	72.6	51.4	36.7	11.3
VOËLVLEI	164 095	59.7	60.5	59.8	51.8	56.6	14.5
WEMMERSHOEK	58 644	53.3	54.8	60.5	47.5	46.4	47.6
TOTAL STORED	898 221	597 070	607 917	610 043	494 816	419 507	187 901
% STORAGE		66.5%	67.7%	67.9%	55.1%	46.7%	20.9%

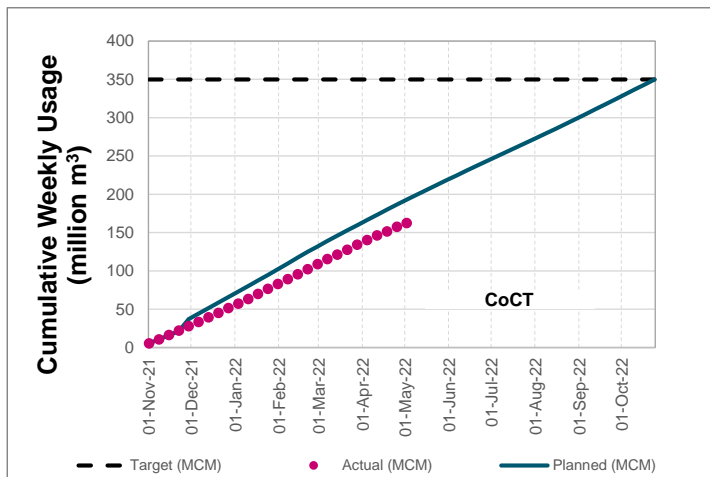
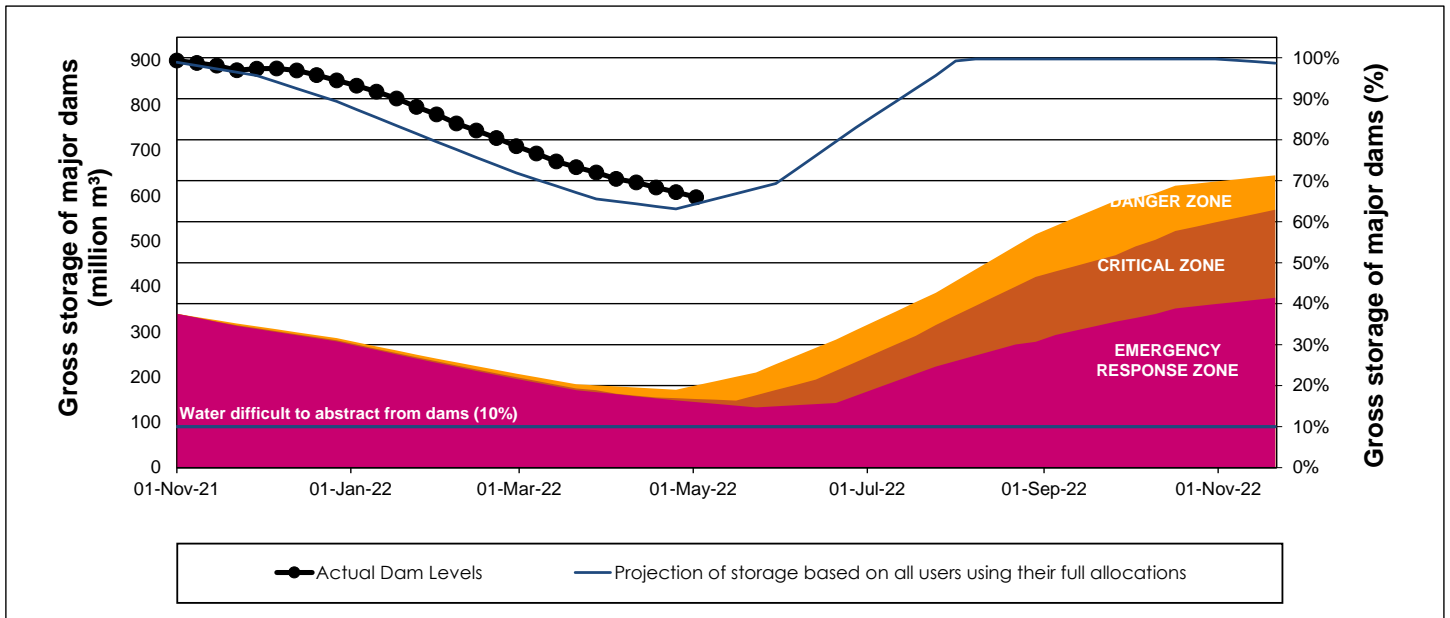
WCWSS Storage Record (2008 - Present)



WCWSS Comparative Storage Graph



WCWSS Dam Storage and Water Use Tracking



Water Stored in Minor Dams

Overall Percentage Full **49.3**

Weekly Change **-1.36**

MINOR DAMS	STORAGE						
	CAPACITY	%	%	%	%	%	%
	MI	02 May 2022	Previous week	2021	2020	2019	2018
ALEXANDRA (Table Mountain)	126	54.7	55.5	0.0	33.5	0.0	69.1
DE VILLIERS (Table Mountain)	243	67.5	67.7	52.9	93.7	60.4	54.9
HELY-HUTCHINSON (Table Mount)	925	18.6	18.7	0.0	0.0	0.0	76.0
KLEINPLAATS (Simon's Town)	1 368	49.4	53.5	48.1	38.4	44.9	38.8
LAND-EN-ZEEZICHT (Helderberg)	451	75.0	76.4	66.6	59.9	97.7	89.0
LEWIS GAY (Simon's Town)	182	0.0	0.0	36.0	0.0	0.0	63.8
VICTORIA (Table Mountain)	128	49.4	49.2	0.0	70.4	0.0	35.9
WOODHEAD (Table Mountain)	954	71.9	71.8	74.1	97.5	51.2	58.1
Total Stored	4 377	2157.3	2216.9	1836.9	2076.4	1680.8	2562.4
Percentages stored		49.3	50.6	42.0	47.4	38.4	58.5

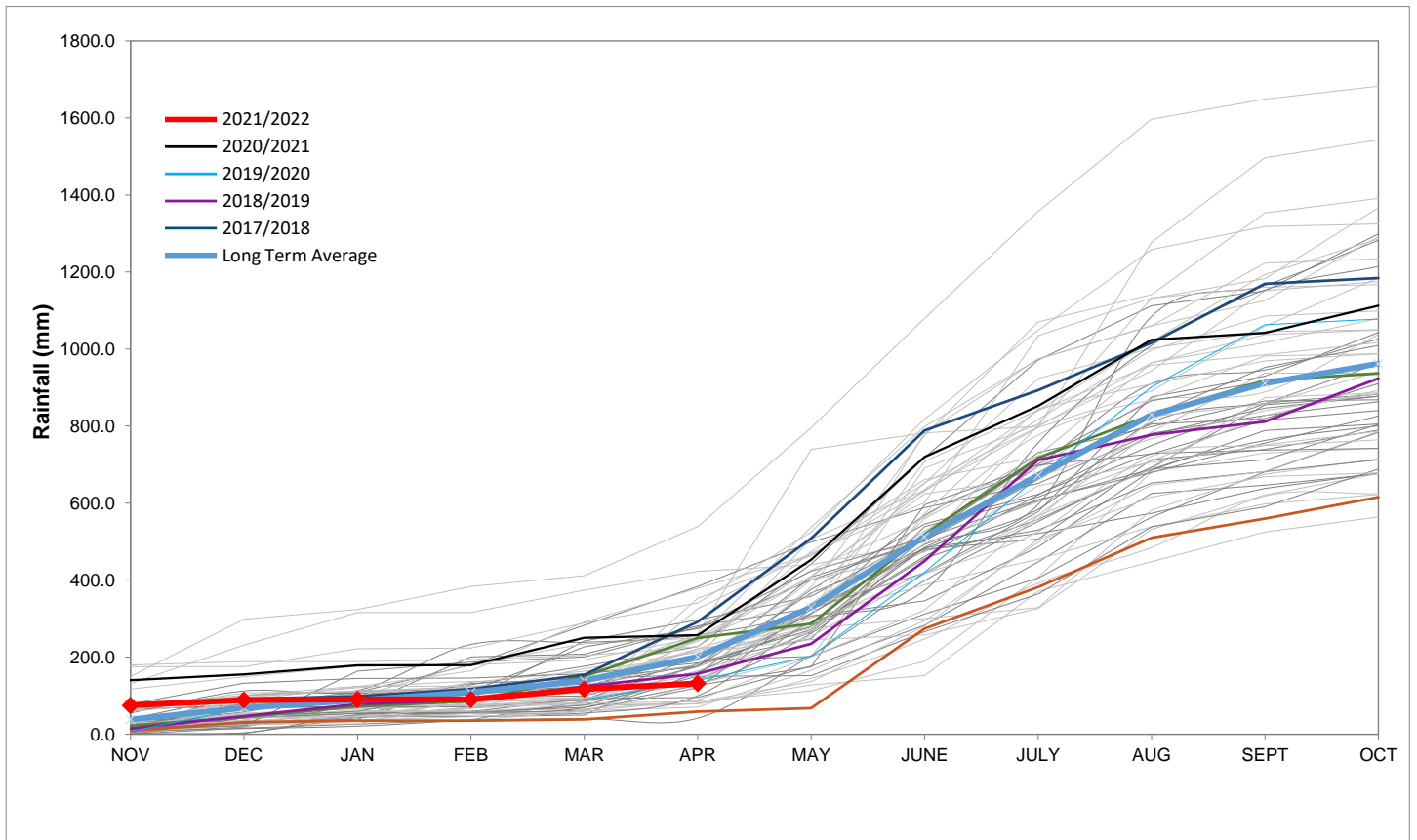
Rainfall Recorded

RAINFALL (mm)	25-Apr	26-Apr	27-Apr	28-Apr	29-Apr	30-Apr	01-May	May	
								Total*	LT Average
Blackheath Upper	0.0	0.0	0.0	0.0	0.0	0.0	0.0	0.0	55.7
Brooklands	0.0	0.0	0.0	0.0	0.0	0.0	0.0	0.0	107.1
Newlands	0.0	0.0	0.0	0.0	0.0	0.0	0.0	0.0	210.0
Steenbras	0.0	0.0	0.0	0.0	0.0	0.0	0.0	0.0	116.9
Table Mountain (Woodhead)	0.0	0.0	0.0	0.0	0.0	0.0	0.0	0.0	188.7
Theewaterskloof	0.0	0.0	0.0	0.0	0.0	0.0	0.0	0.0	48.5
Tygerberg	0.0	0.0	0.0	0.0	2.0	0.0	0.0	0.0	60.0
Voëlvlei	0.0	0.0	0.0	0.0	0.0	0.0	0.0	0.0	69.2
Wemmershoek	0.0	0.0	0.0	0.0	0.0	0.0	0.0	0.0	120.1
Wynberg	0.0	0.0	0.0	0.0	0.0	0.0	0.0	0.0	142.8

Notes: *Total/cumulative rainfall for month indicated above
LT: Long Term

Accumulated Monthly Rainfall at Wemmershoek

Note: Wemmershoek station used due to long record and mountainous location



Drinking Water Quality

SAMPLE PASS RATE

Month	Water Quality Compliance (%)	Target (%)
Jan-21	99.16	98
Feb-21	99.12	98
Mar-21	99.08	98
Apr-21	99.07	98
May-21	98.98	98
Jun-21	99.11	98
Jul-21	99.10	98
Aug-21	99.12	98
Sep-21	99.09	98
Oct-21	99.11	98
Nov-21	99.11	98
Dec-21	99.09	98
Jan-22	99.04	98
Feb-22	99.04	98
Mar-22	98.99	98

Notes:

This table shows CCT drinking water quality compliance according to the South African National Standard 241:2015. Compliance, measured against all prescribed chemical and microbiological components, consistently exceeds the very high CCT target of 98%. (Overall compliance percentages of continuous sampling and analysis are released on a monthly basis.