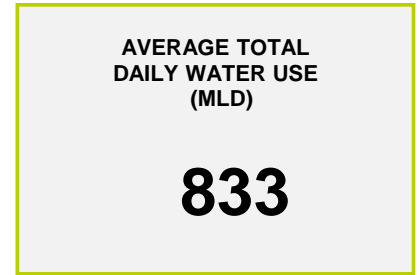
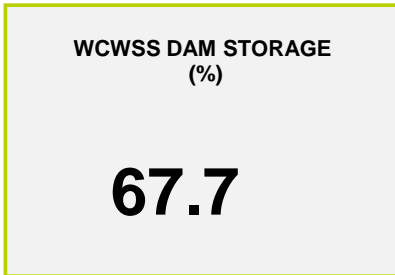
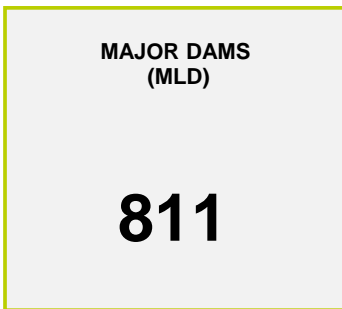




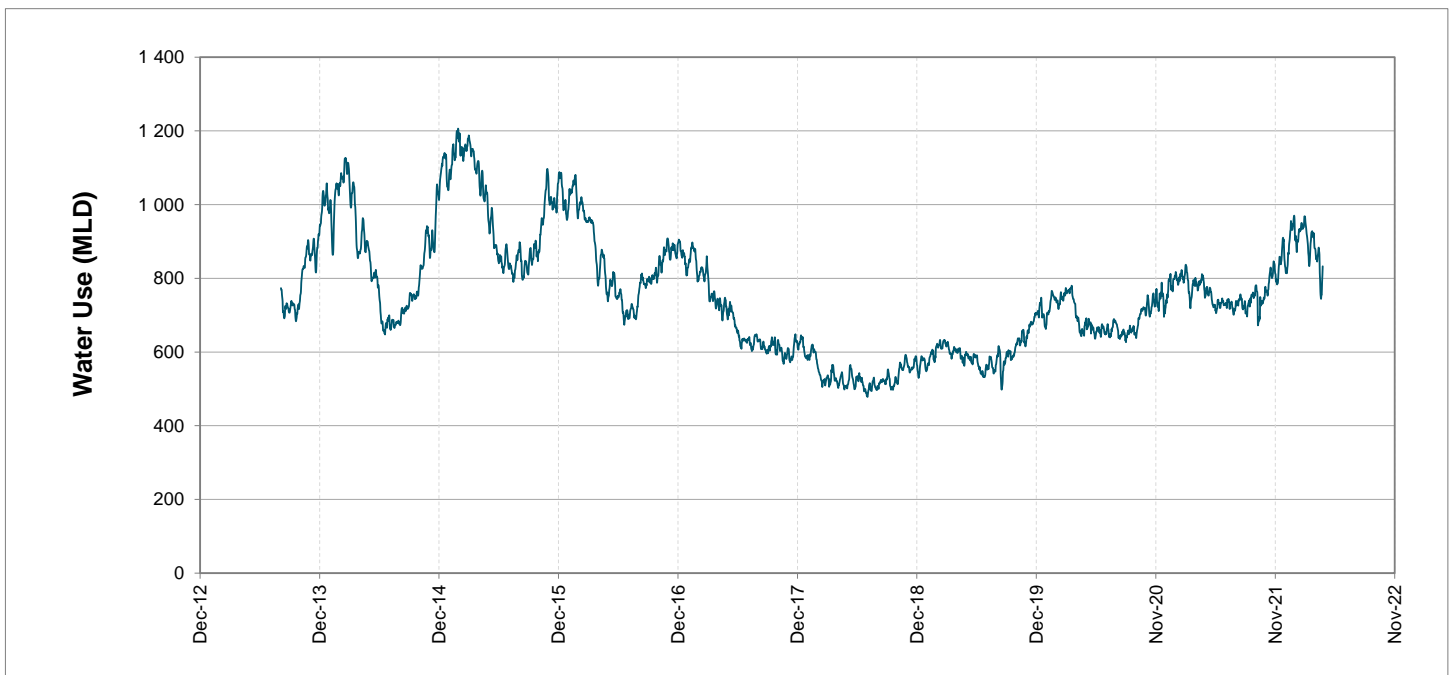
Headline Statistics



Water Production from Different Sources



Overall Water Usage Trend (2010 - Present)



WCWSS means Western Cape Water Supply System

MLD means million litres per day

More information on Water Saving and Restrictions is available on the City of Cape Town's 'ThinkWater' website

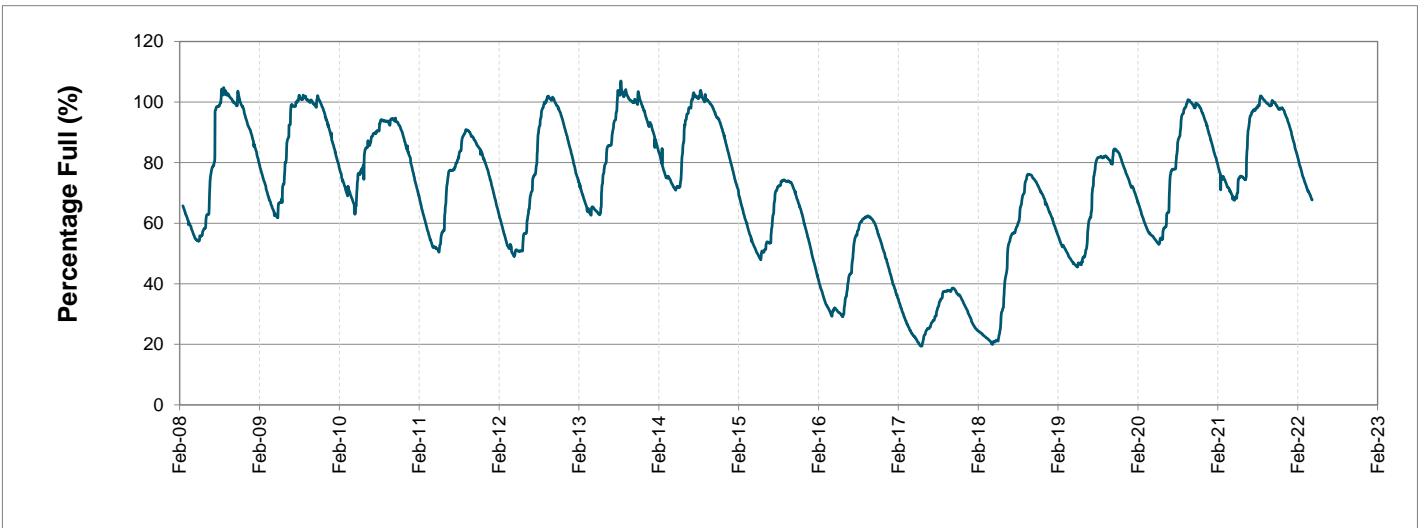
Water Stored in Major Dams (WCWSS)

Overall Percentage Full **67.7%**

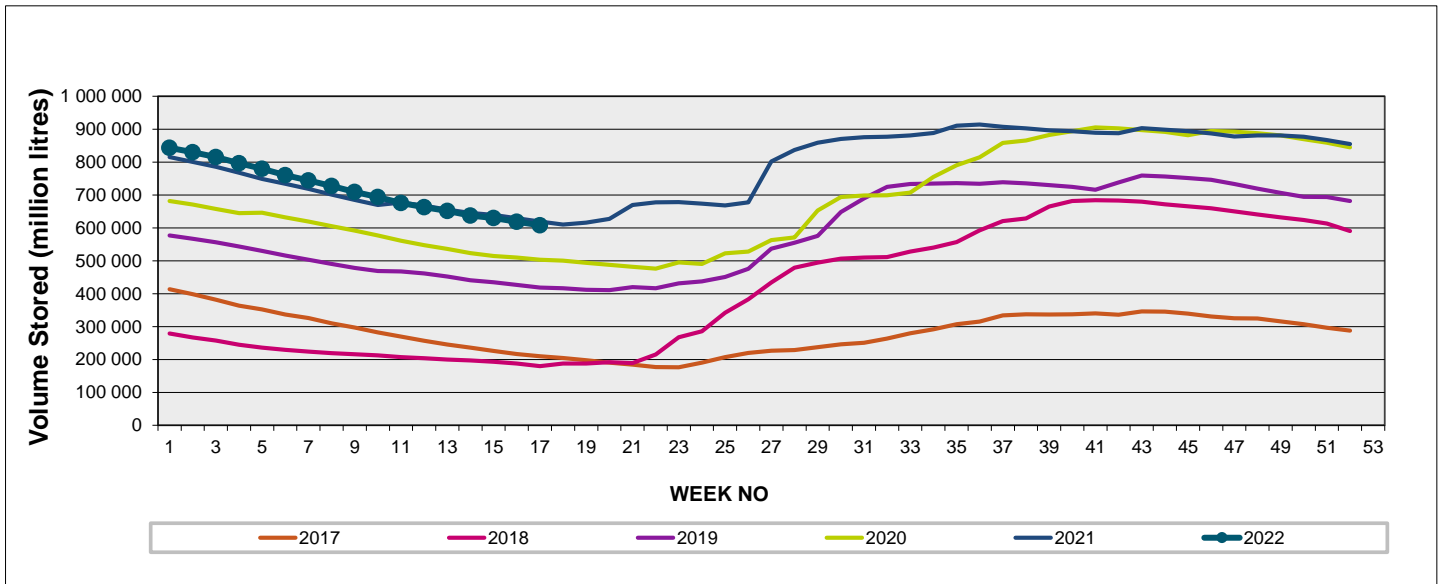
Weekly Change **-1.2%**

| MAJOR DAMS (WCWSS) | STORAGE | | | | | | |
|---------------------|----------------|----------------|----------------|----------------|----------------|----------------|----------------|
| | CAPACITY | % | % | % | % | % | % |
| | MI | 25 April 2022 | Previous week | 2021 | 2020 | 2019 | 2018 |
| BERG RIVER | 130 010 | 70.4 | 71.6 | 69.1 | 67.5 | 68.3 | 37.3 |
| STEENBRAS LOWER | 33 517 | 65.3 | 66.5 | 56.8 | 53.7 | 41.6 | 38.5 |
| STEENBRAS UPPER | 31 767 | 90.7 | 90.6 | 53.4 | 96.7 | 68.3 | 61.5 |
| THEEWATERSKLOOF | 480 188 | 69.6 | 70.8 | 73.9 | 52.0 | 37.1 | 10.3 |
| VOËLVLEI | 164 095 | 60.5 | 61.7 | 62.6 | 52.7 | 57.3 | 13.8 |
| WEMMERSHOEK | 58 644 | 54.8 | 56.3 | 62.7 | 49.3 | 48.4 | 45.3 |
| TOTAL STORED | 898 221 | 607 917 | 618 576 | 620 233 | 501 420 | 424 910 | 179 616 |
| % STORAGE | | 67.7% | 68.9% | 69.1% | 55.8% | 47.3% | 20.0% |

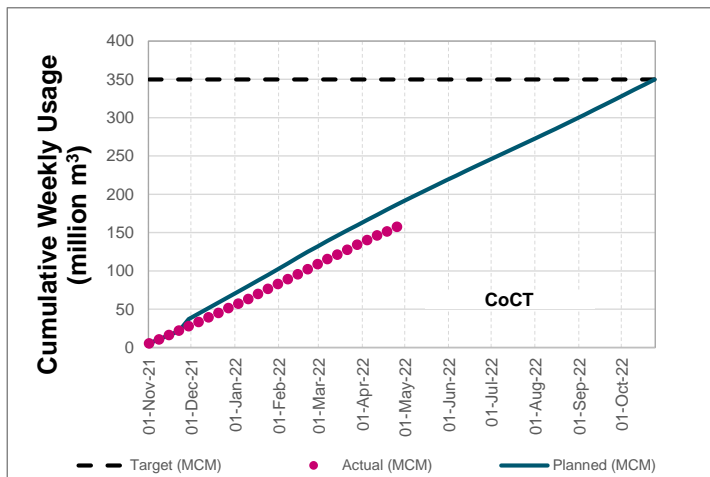
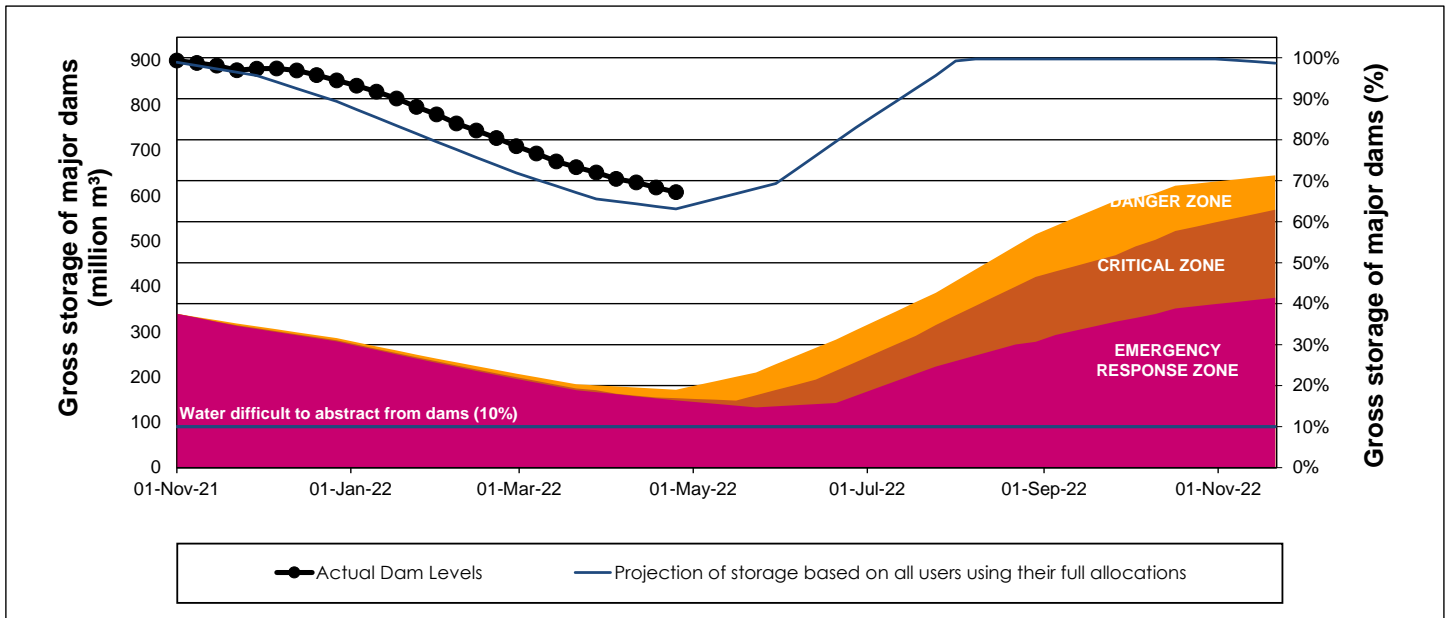
WCWSS Storage Record (2008 - Present)



WCWSS Comparative Storage Graph



WCWSS Dam Storage and Water Use Tracking



Water Stored in Minor Dams

Overall Percentage Full **50.6**

Weekly Change **-0.85**

| MINOR DAMS | STORAGE | | | | | | |
|-------------------------------|--------------|---------------|---------------|---------------|---------------|---------------|---------------|
| | CAPACITY | % | % | % | % | % | % |
| | MI | 25 April 2022 | Previous week | 2021 | 2020 | 2019 | 2018 |
| ALEXANDRA (Table Mountain) | 126 | 55.5 | 57.0 | 0.0 | 33.8 | 0.0 | 62.6 |
| DE VILLIERS (Table Mountain) | 243 | 67.7 | 67.5 | 53.1 | 93.9 | 60.0 | 56.6 |
| HELY-HUTCHINSON (Table Mount) | 925 | 18.7 | 18.8 | 0.0 | 0.0 | 0.0 | 71.6 |
| KLEINPLAATS (Simon's Town) | 1 368 | 53.5 | 55.7 | 49.7 | 39.5 | 45.5 | 38.8 |
| LAND-EN-ZEEZICHT (Helderberg) | 451 | 76.4 | 77.4 | 68.0 | 58.8 | 97.3 | 88.2 |
| LEWIS GAY (Simon's Town) | 182 | 0.0 | 0.0 | 37.4 | 0.0 | 0.0 | 60.2 |
| VICTORIA (Table Mountain) | 128 | 49.2 | 50.1 | 0.0 | 74.3 | 0.0 | 38.9 |
| WOODHEAD (Table Mountain) | 954 | 71.8 | 71.8 | 76.8 | 97.3 | 53.4 | 57.8 |
| Total Stored | 4 377 | 2216.9 | 2254.2 | 1892.8 | 2089.3 | 1706.9 | 2508.1 |
| Percentages stored | | 50.6 | 51.5 | 43.2 | 47.7 | 39.0 | 57.3 |

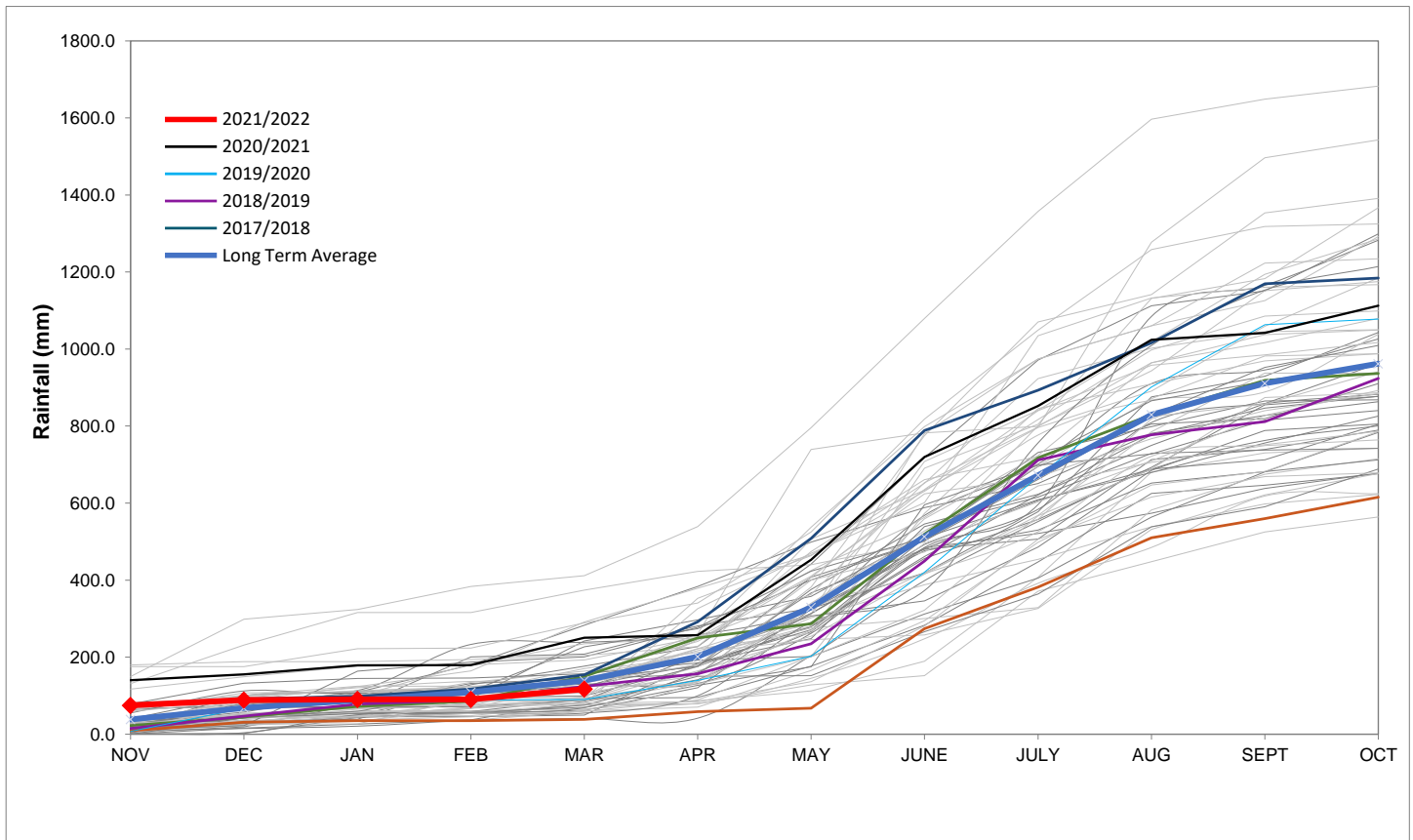
Rainfall Recorded

| RAINFALL (mm) | 18-Apr | 19-Apr | 20-Apr | 21-Apr | 22-Apr | 23-Apr | 24-Apr | Apr | |
|---------------------------|--------|--------|--------|--------|--------|--------|--------|--------|------------|
| | | | | | | | | Total* | LT Average |
| Blackheath Upper | 0.0 | 0.0 | 0.0 | 1.0 | 2.0 | 0.0 | 2.0 | 11.5 | 36.1 |
| Brooklands | 0.0 | 0.0 | 0.0 | 0.0 | 0.0 | 0.0 | 0.0 | 18.0 | 61.9 |
| Newlands | 0.0 | 0.0 | 0.0 | 0.0 | 0.0 | 0.0 | 0.0 | 28.0 | 109.5 |
| Steenbras | 0.0 | 0.0 | 0.0 | 0.0 | 0.0 | 0.0 | 0.0 | 14.2 | 81.3 |
| Table Mountain (Woodhead) | 0.0 | 0.0 | 0.0 | 0.0 | 0.0 | 0.0 | 0.0 | 24.0 | 125.0 |
| Theewaterskloof | 0.0 | 0.0 | 0.0 | 0.0 | 0.0 | 0.0 | 0.0 | 7.4 | 53.3 |
| Tygerberg | 0.0 | 0.0 | 0.0 | 0.0 | 0.0 | 0.0 | 0.0 | 6.8 | 35.7 |
| Voëlvllei | 0.0 | 0.0 | 0.0 | 0.0 | 0.0 | 0.0 | 0.0 | 9.5 | 40.2 |
| Wemmershoek | 0.0 | 0.0 | 0.0 | 0.0 | 0.0 | 0.0 | 0.0 | 14.7 | 67.8 |
| Wynberg | 0.0 | 0.0 | 0.0 | 0.0 | 0.0 | 0.0 | 1.0 | 16.9 | 62.9 |

Notes: *Total/cummulative rainfall for month indicated above
LT: Long Term

Accumulated Monthly Rainfall at Wemmershoek

Note: Wemmershoek station used due to long record and mountainous location



Drinking Water Quality

SAMPLE PASS RATE

| Month | Water Quality Compliance (%) | Target (%) |
|--------|------------------------------|------------|
| Jan-21 | 99.16 | 98 |
| Feb-21 | 99.12 | 98 |
| Mar-21 | 99.08 | 98 |
| Apr-21 | 99.07 | 98 |
| May-21 | 98.98 | 98 |
| Jun-21 | 99.11 | 98 |
| Jul-21 | 99.10 | 98 |
| Aug-21 | 99.12 | 98 |
| Sep-21 | 99.09 | 98 |
| Oct-21 | 99.11 | 98 |
| Nov-21 | 99.11 | 98 |
| Dec-21 | 99.09 | 98 |
| Jan-22 | 99.04 | 98 |
| Feb-22 | 99.04 | 98 |
| Mar-22 | 98.99 | 98 |

Notes:

This table shows CCT drinking water quality compliance according to the South African National Standard 241:2015. Compliance, measured against all prescribed chemical and microbiological components, consistently exceeds the very high CCT target of 98%. (Overall compliance percentages of continuous sampling and analysis are released on a monthly basis.)