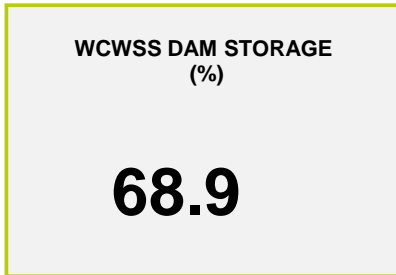
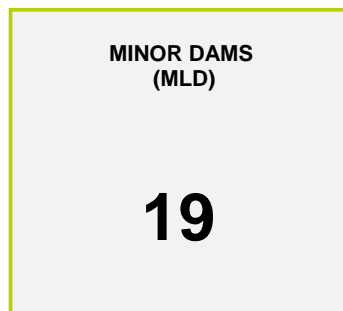
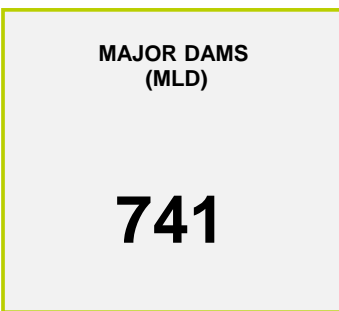




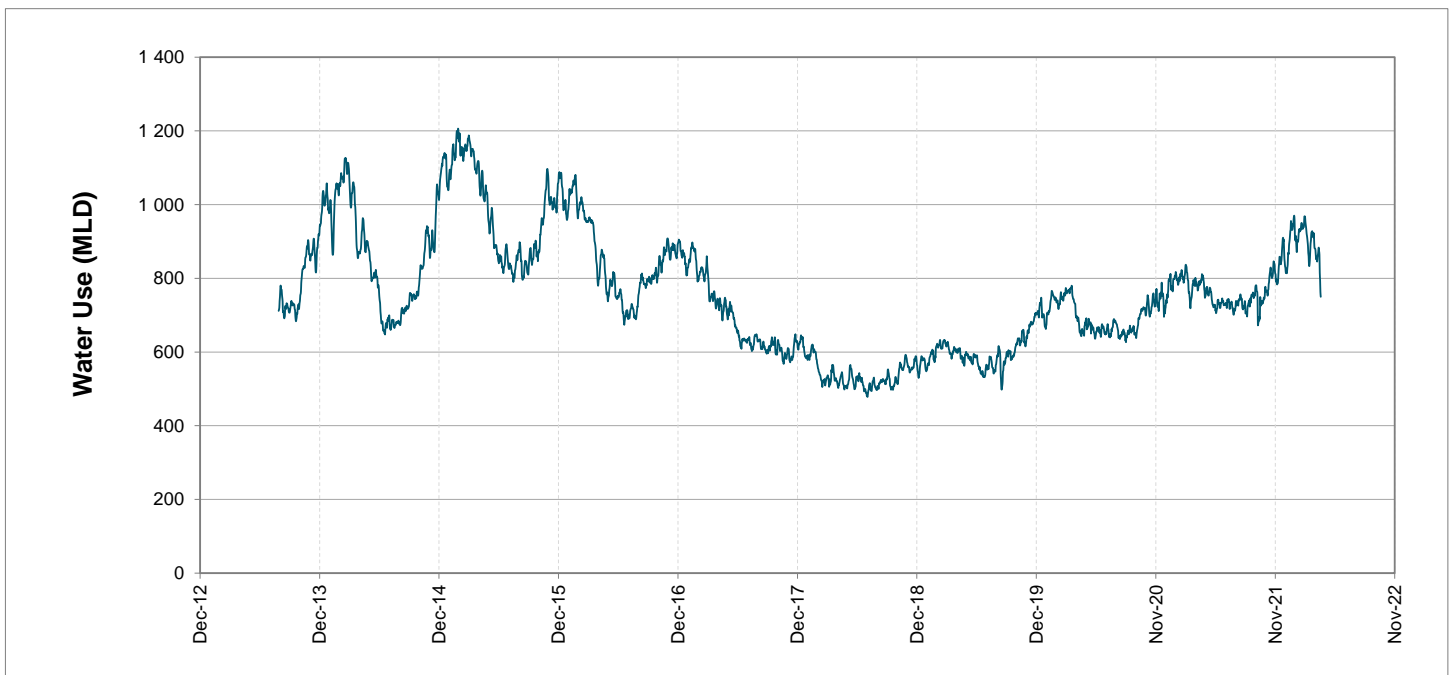
## Headline Statistics



## Water Production from Different Sources



## Overall Water Usage Trend (2010 - Present)



WCWSS means Western Cape Water Supply System

MLD means million litres per day

More information on Water Saving and Restrictions is available on the City of Cape Town's 'ThinkWater' website

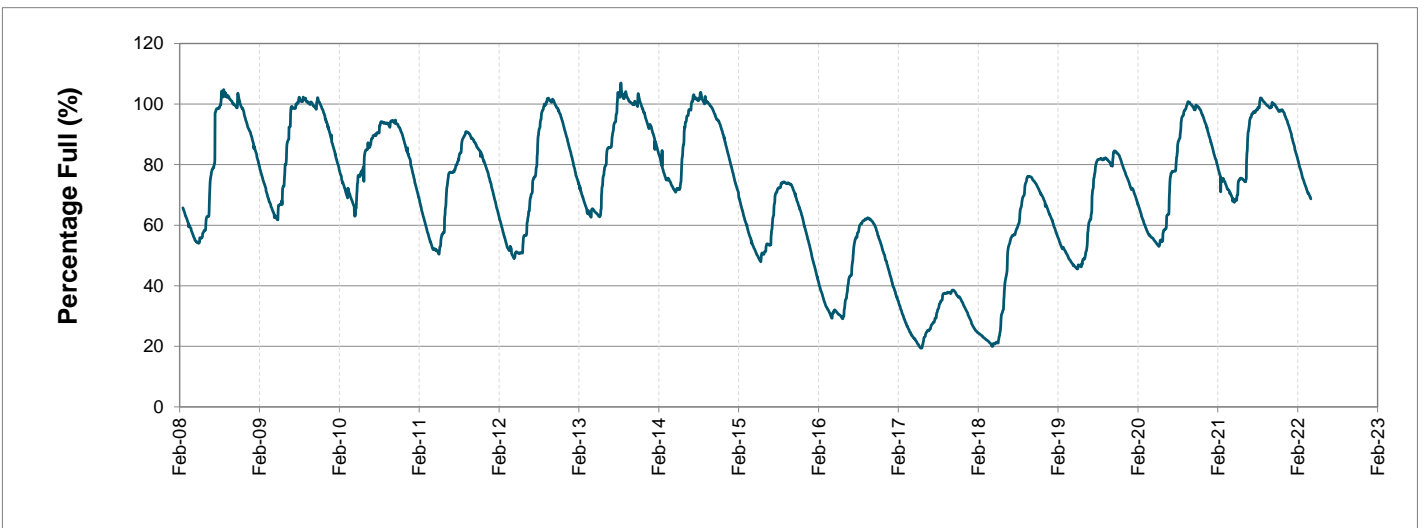
# Water Stored in Major Dams (WCWSS)

Overall Percentage Full **68.9%**

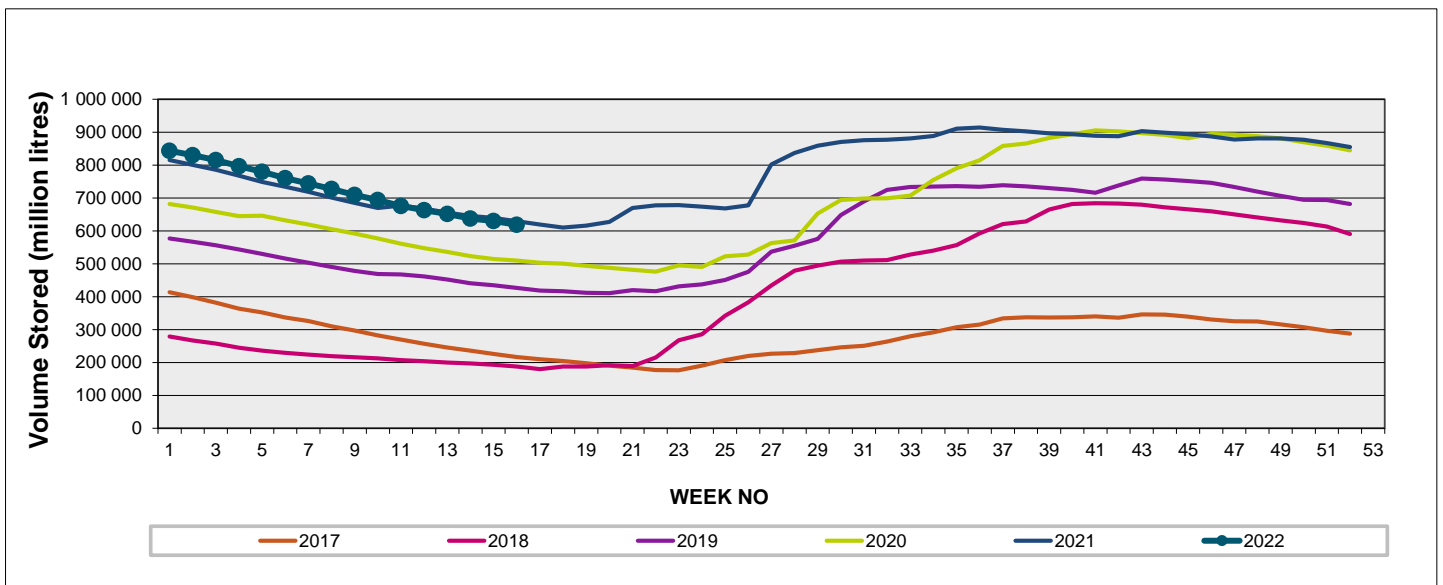
Weekly Change **-1.2%**

MAJOR DAMS (WCWSS)	STORAGE						
	CAPACITY	%	%	%	%	%	%
	MI	18 April 2022	Previous week	2021	2020	2019	2018
BERG RIVER	130 010	71.6	72.5	72.4	68.0	68.9	41.5
STEENBRAS LOWER	33 517	66.5	67.7	54.0	55.8	42.8	40.0
STEENBRAS UPPER	31 767	90.6	92.1	53.3	96.9	68.9	65.8
THEEWATERSKLOOF	480 188	70.8	72.1	74.9	51.8	37.7	10.4
VOËLVLEI	164 095	61.7	63.0	62.3	53.3	58.3	13.9
WEMMERSHOEK	58 644	56.3	58.2	64.6	51.1	49.9	44.1
<b>TOTAL STORED</b>	<b>898 221</b>	<b>618 576</b>	<b>629 752</b>	<b>628 927</b>	<b>504 192</b>	<b>431 560</b>	<b>186 906</b>
<b>% STORAGE</b>		<b>68.9%</b>	<b>70.1%</b>	<b>70.0%</b>	<b>56.1%</b>	<b>48.0%</b>	<b>20.8%</b>

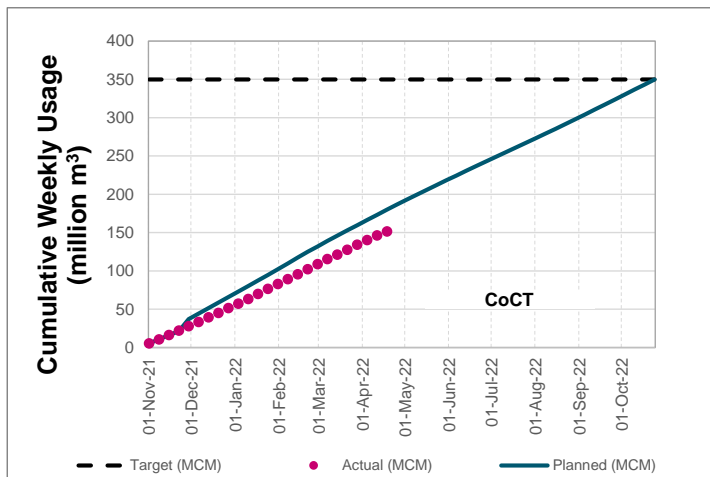
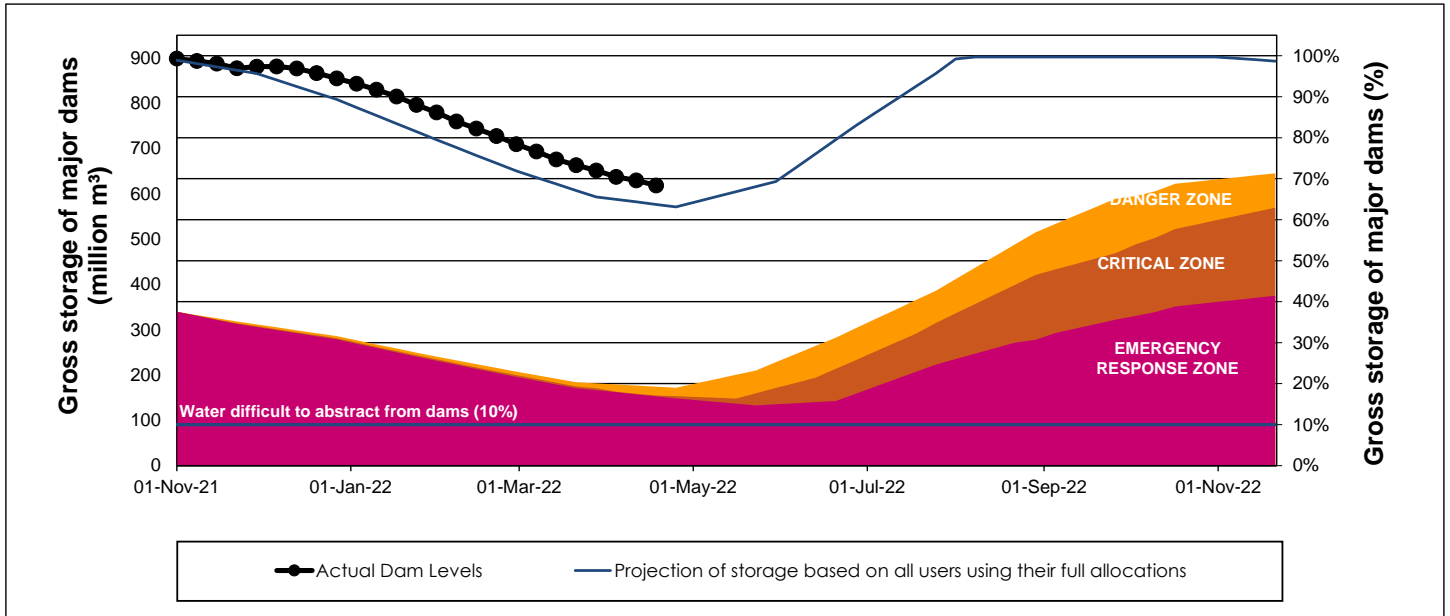
## WCWSS Storage Record (2008 - Present)



## WCWSS Comparative Storage Graph



# WCWSS Dam Storage and Water Use Tracking



## Water Stored in Minor Dams

Overall Percentage Full **51.5**

Weekly Change **-0.56**

MINOR DAMS	STORAGE						
	CAPACITY	%	%	%	%	%	%
	MI	18 April 2022	Previous week	2021	2020	2019	2018
ALEXANDRA (Table Mountain)	126	57.0	58.0	0.0	33.9	0.0	57.8
DE VILLIERS (Table Mountain)	243	67.5	67.3	53.3	93.9	60.2	58.0
HELY-HUTCHINSON (Table Mount)	925	18.8	18.3	5.0	0.0	0.0	73.0
KLEINPLAATS (Simon's Town)	1 368	55.7	57.2	50.9	40.0	46.1	39.4
LAND-EN-ZEEZICHT (Helderberg)	451	77.4	78.6	68.1	58.5	96.3	88.8
LEWIS GAY (Simon's Town)	182	0.0	1.3	42.5	0.0	0.0	56.1
VICTORIA (Table Mountain)	128	50.1	50.6	0.0	74.3	0.0	44.9
WOODHEAD (Table Mountain)	954	71.8	71.8	75.0	97.3	57.6	59.0
<b>Total Stored</b>	<b>4 377</b>	<b>2254.2</b>	<b>2278.8</b>	<b>1947.0</b>	<b>2094.4</b>	<b>1751.3</b>	<b>2540.3</b>
<b>Percentages stored</b>		<b>51.5</b>	<b>52.1</b>	<b>44.5</b>	<b>47.9</b>	<b>40.0</b>	<b>58.0</b>

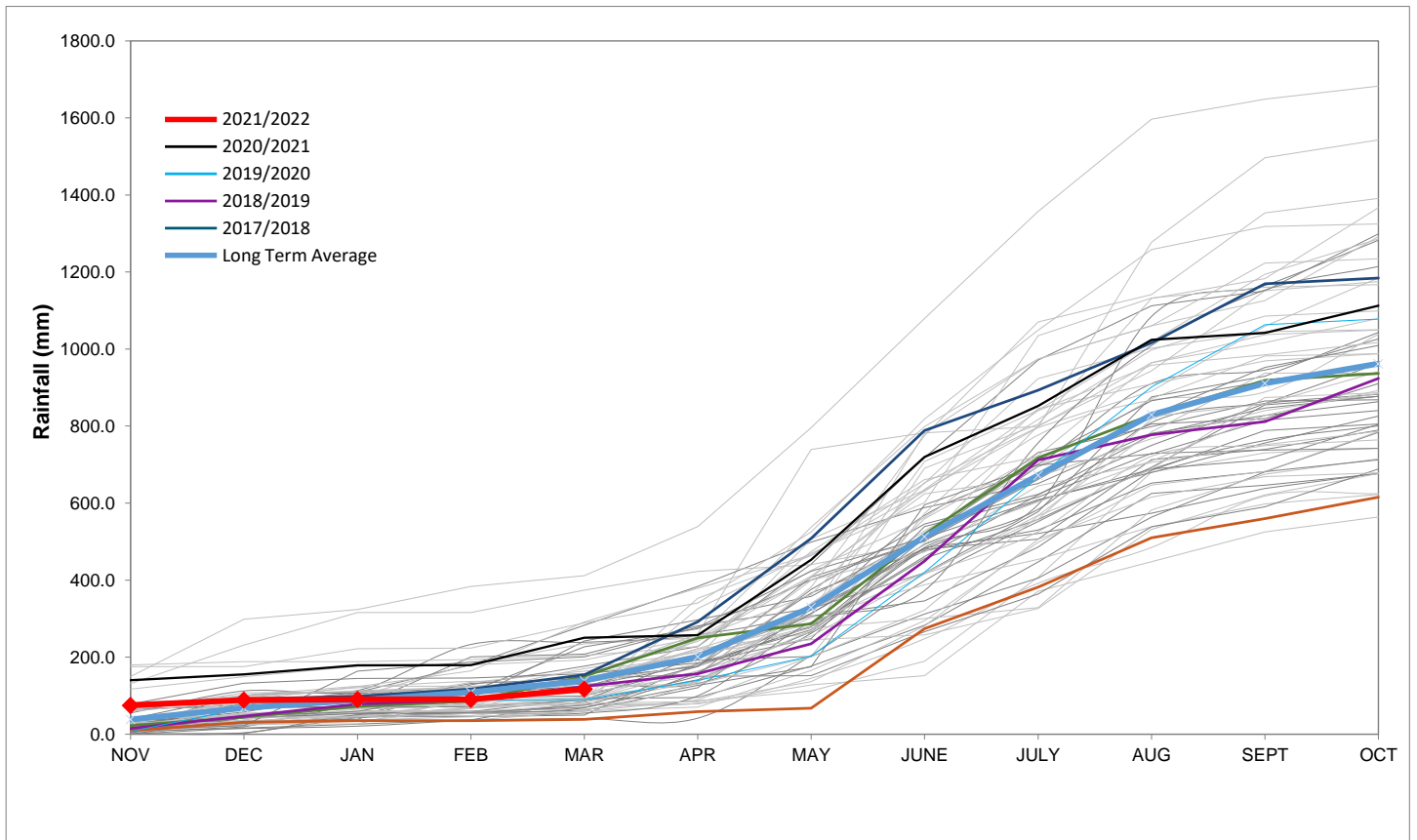
# Rainfall Recorded

RAINFALL (mm)	11-Apr	12-Apr	13-Apr	14-Apr	15-Apr	16-Apr	17-Apr	Apr	
								Total*	LT Average
Blackheath Upper	0.0	0.0	0.0	1.5	0.0	0.0	0.0	6.5	36.1
Brooklands	0.0	0.0	0.0	0.0	0.0	0.0	0.0	18.0	61.9
Newlands	0.0	0.0	0.0	0.0	0.0	0.0	0.0	28.0	109.5
Steenbras	0.0	0.0	0.0	0.0	0.0	0.0	0.0	14.2	81.3
Table Mountain (Woodhead)	0.0	0.0	0.0	0.0	0.0	0.0	0.0	24.0	125.0
Theewaterskloof	0.0	0.0	0.4	1.8	0.0	0.0	0.0	7.4	53.3
Tygerberg	0.0	0.0	0.0	0.0	0.0	0.0	0.0	6.8	35.7
Voëlvlei	0.0	0.0	0.0	0.0	0.0	0.0	0.0	9.5	40.2
Wemmershoek	0.0	0.0	0.0	0.0	0.0	0.0	0.0	14.7	67.8
Wynberg	0.0	0.0	0.0	0.0	0.0	0.0	0.0	15.9	62.9

Notes: \*Total/cumulative rainfall for month indicated above  
LT: Long Term

# Accumulated Monthly Rainfall at Wemmershoek

Note: Wemmershoek station used due to long record and mountainous location



## Drinking Water Quality

### SAMPLE PASS RATE

Month	Water Quality Compliance (%)	Target (%)
Jan-21	99.16	98
Feb-21	99.12	98
Mar-21	99.08	98
Apr-21	99.07	98
May-21	98.98	98
Jun-21	99.11	98
Jul-21	99.10	98
Aug-21	99.12	98
Sep-21	99.09	98
Oct-21	99.11	98
Nov-21	99.11	98
Dec-21	99.09	98
Jan-22	99.04	98
Feb-22	99.04	98
Mar-22	98.99	98

#### Notes:

This table shows CCT drinking water quality compliance according to the South African National Standard 241:2015. Compliance, measured against all prescribed chemical and microbiological components, consistently exceeds the very high CCT target of 98%. (Overall compliance percentages of continuous sampling and analysis are released on a monthly basis.