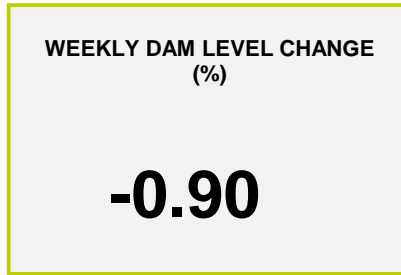
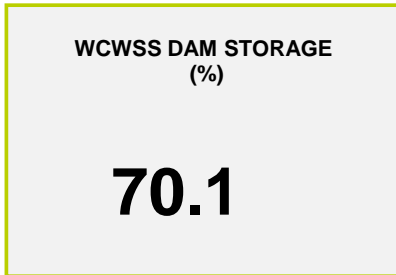
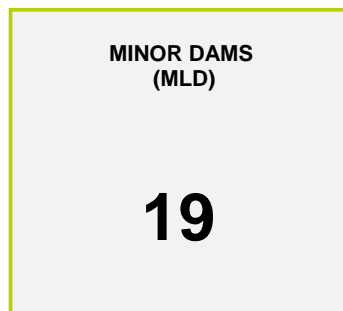
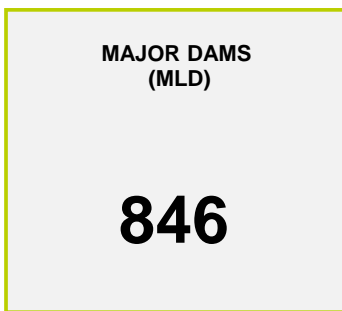




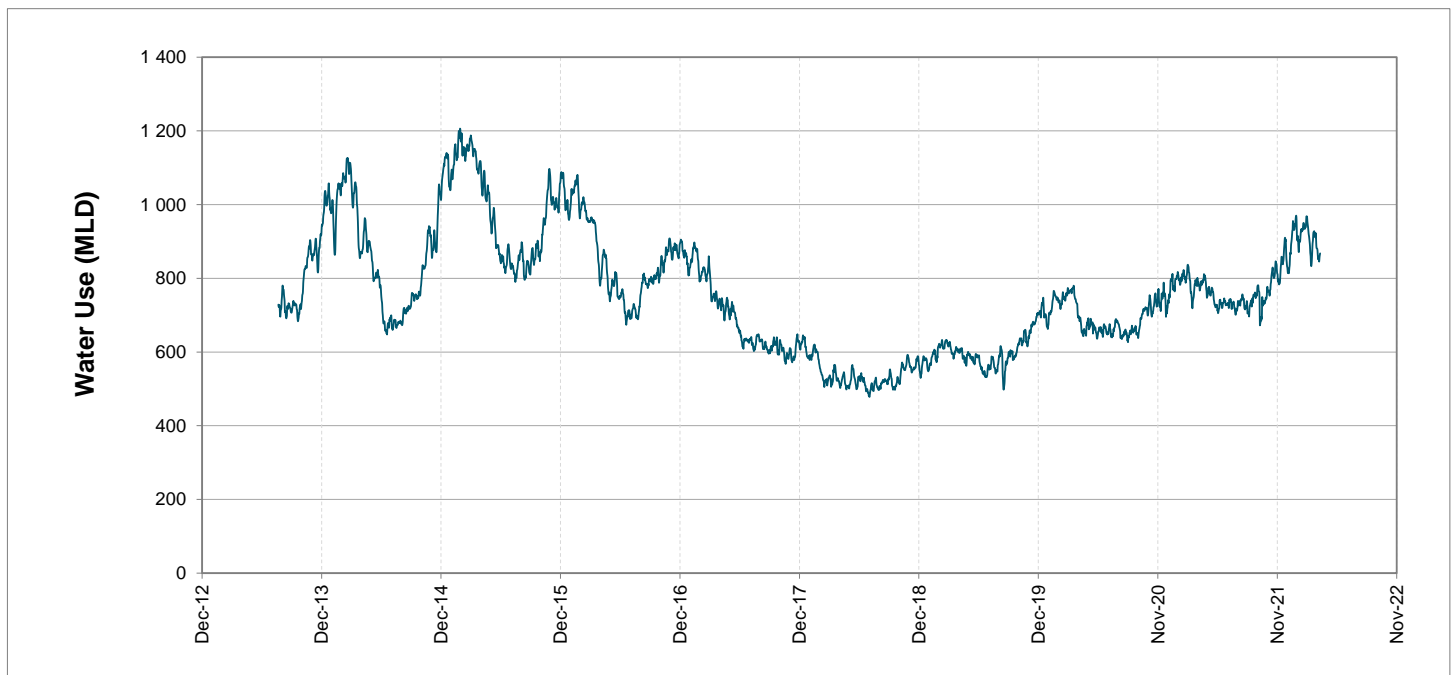
Headline Statistics



Water Production from Different Sources



Overall Water Usage Trend (2010 - Present)



WCWSS means Western Cape Water Supply System

MLD means million litres per day

More information on Water Saving and Restrictions is available on the City of Cape Town's 'ThinkWater' website

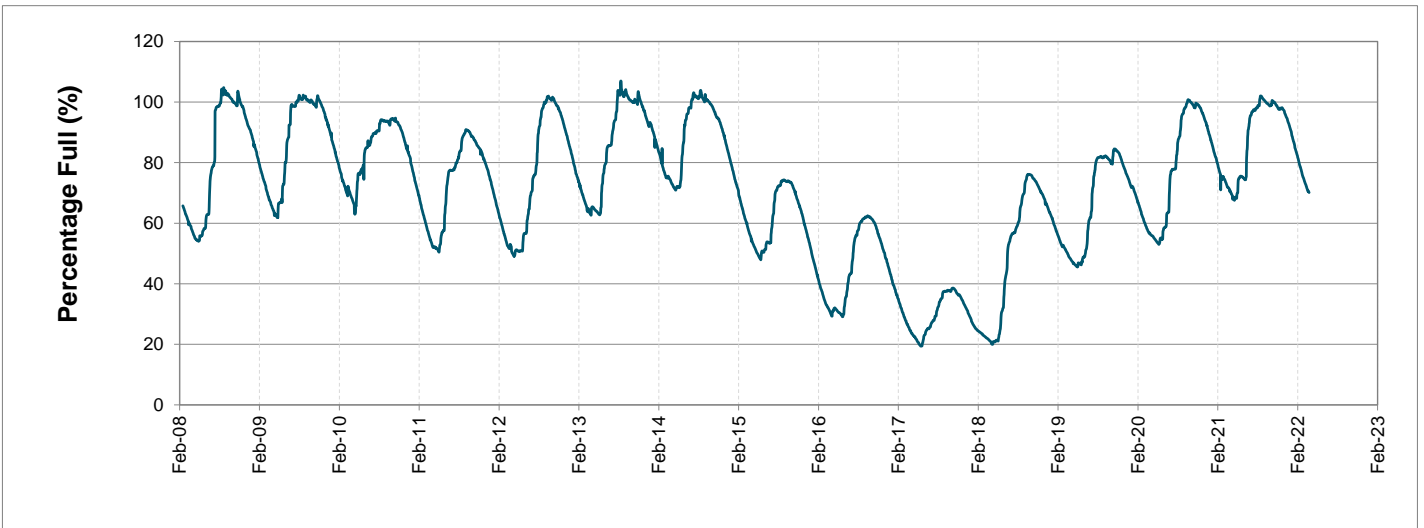
Water Stored in Major Dams (WCWSS)

Overall Percentage Full **70.1%**

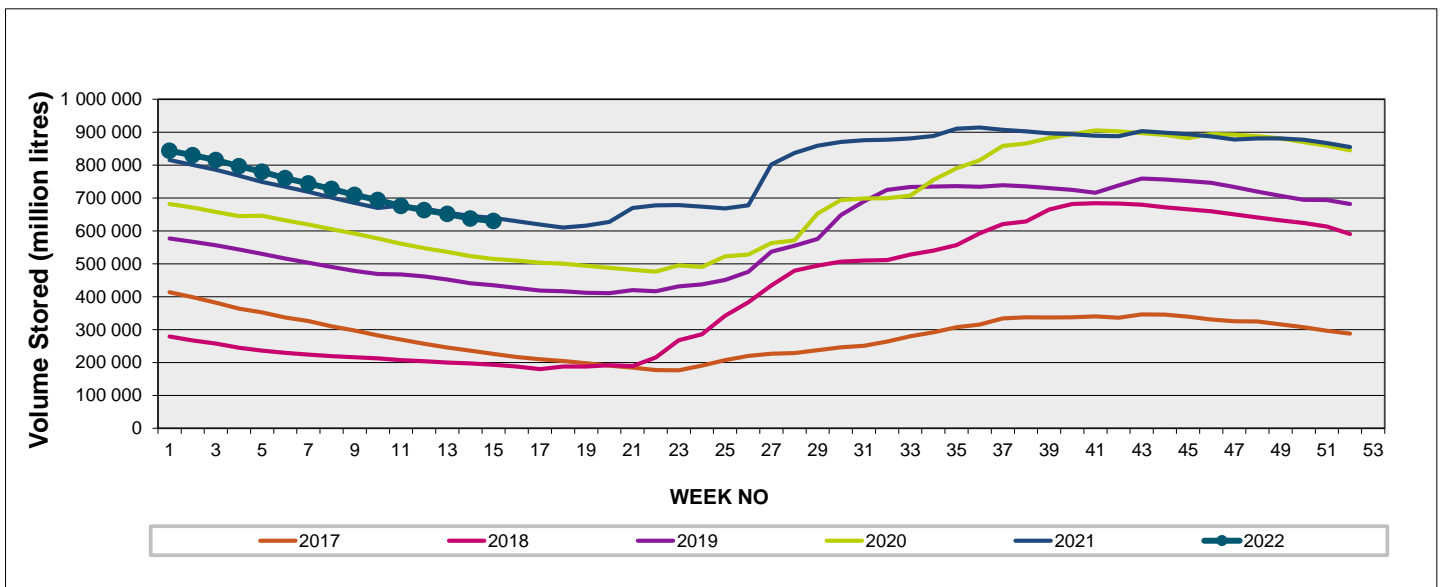
Weekly Change **-0.9%**

MAJOR DAMS (WCWSS)	STORAGE						
	CAPACITY	%	%	%	%	%	%
	MI	11 April 2022	Previous week	2021	2020	2019	2018
BERG RIVER	130 010	72.5	73.1	73.7	66.8	69.9	42.9
STEENBRAS LOWER	33 517	67.7	69.4	60.6	57.3	44.4	39.3
STEENBRAS UPPER	31 767	92.1	91.5	53.0	96.8	69.2	71.3
THEEWATERSKLOOF	480 188	72.1	72.9	75.9	52.8	38.1	10.5
VOËLVLEI	164 095	63.0	64.0	63.3	53.5	59.0	14.2
WEMMERSHOEK	58 644	58.2	59.8	66.8	52.3	51.9	44.0
TOTAL STORED	898 221	629 752	637 308	640 448	508 564	437 942	190 966
% STORAGE		70.1%	71.0%	71.3%	56.6%	48.8%	21.3%

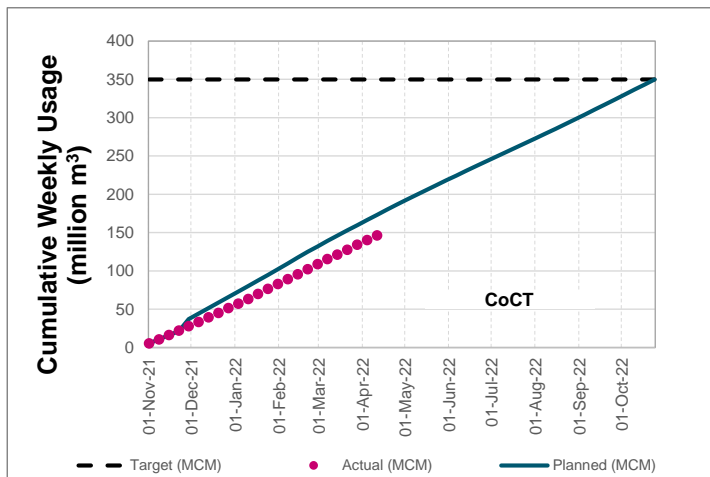
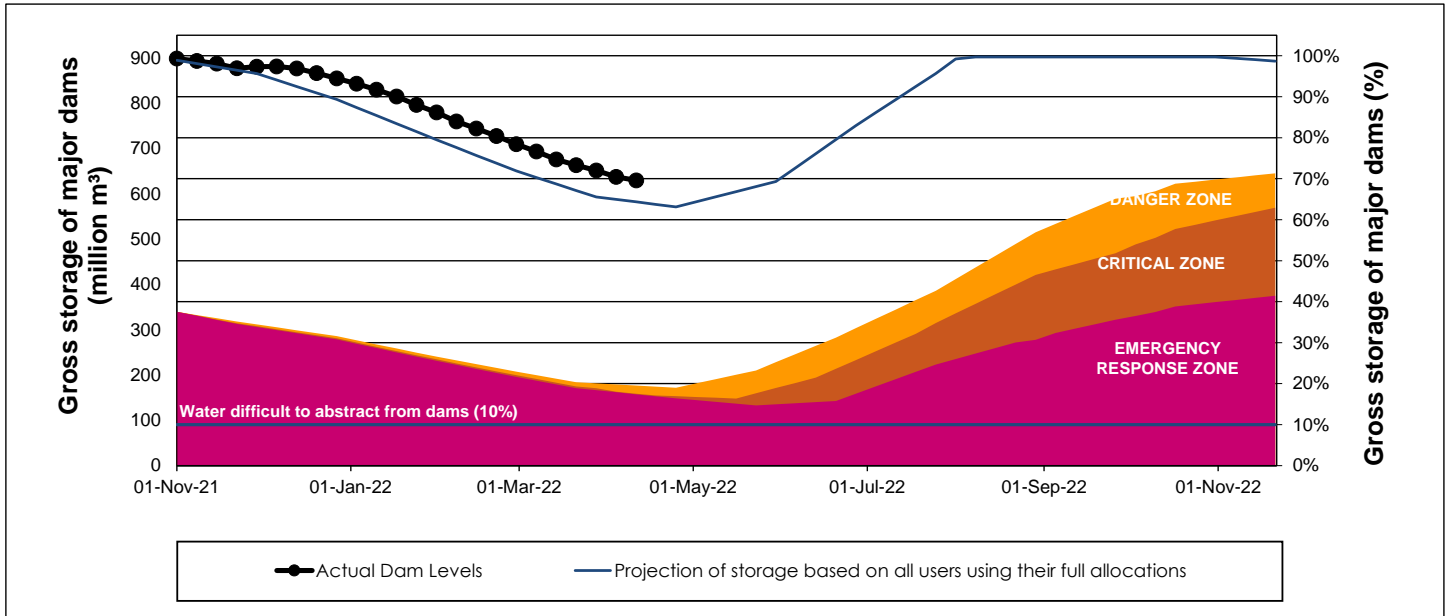
WCWSS Storage Record (2008 - Present)



WCWSS Comparative Storage Graph



WCWSS Dam Storage and Water Use Tracking



Water Stored in Minor Dams

Overall Percentage Full **52.1**

Weekly Change **0.37**

MINOR DAMS	STORAGE						
	CAPACITY	%	%	%	%	%	%
	MI	11 April 2022	Previous week	2021	2020	2019	2018
ALEXANDRA (Table Mountain)	126	58.0	57.3	0.0	32.5	0.0	53.0
DE VILLIERS (Table Mountain)	243	67.3	65.9	53.9	93.5	65.7	57.0
HELY-HUTCHINSON (Table Mount)	925	18.3	14.0	11.6	0.0	0.0	80.9
KLEINPLAATS (Simon's Town)	1 368	57.2	58.7	52.2	41.0	48.2	40.0
LAND-EN-ZEEZICHT (Helderberg)	451	78.6	78.5	69.3	59.1	95.5	92.7
LEWIS GAY (Simon's Town)	182	1.3	9.0	51.9	0.0	0.0	55.7
VICTORIA (Table Mountain)	128	50.6	50.4	0.0	72.7	0.0	52.1
WOODHEAD (Table Mountain)	954	71.8	71.3	70.8	86.9	64.6	58.6
Total Stored	4 377	2278.8	2262.4	2007.8	2006.2	1854.6	2635.1
Percentages stored		52.1	51.7	45.9	45.8	42.4	60.2

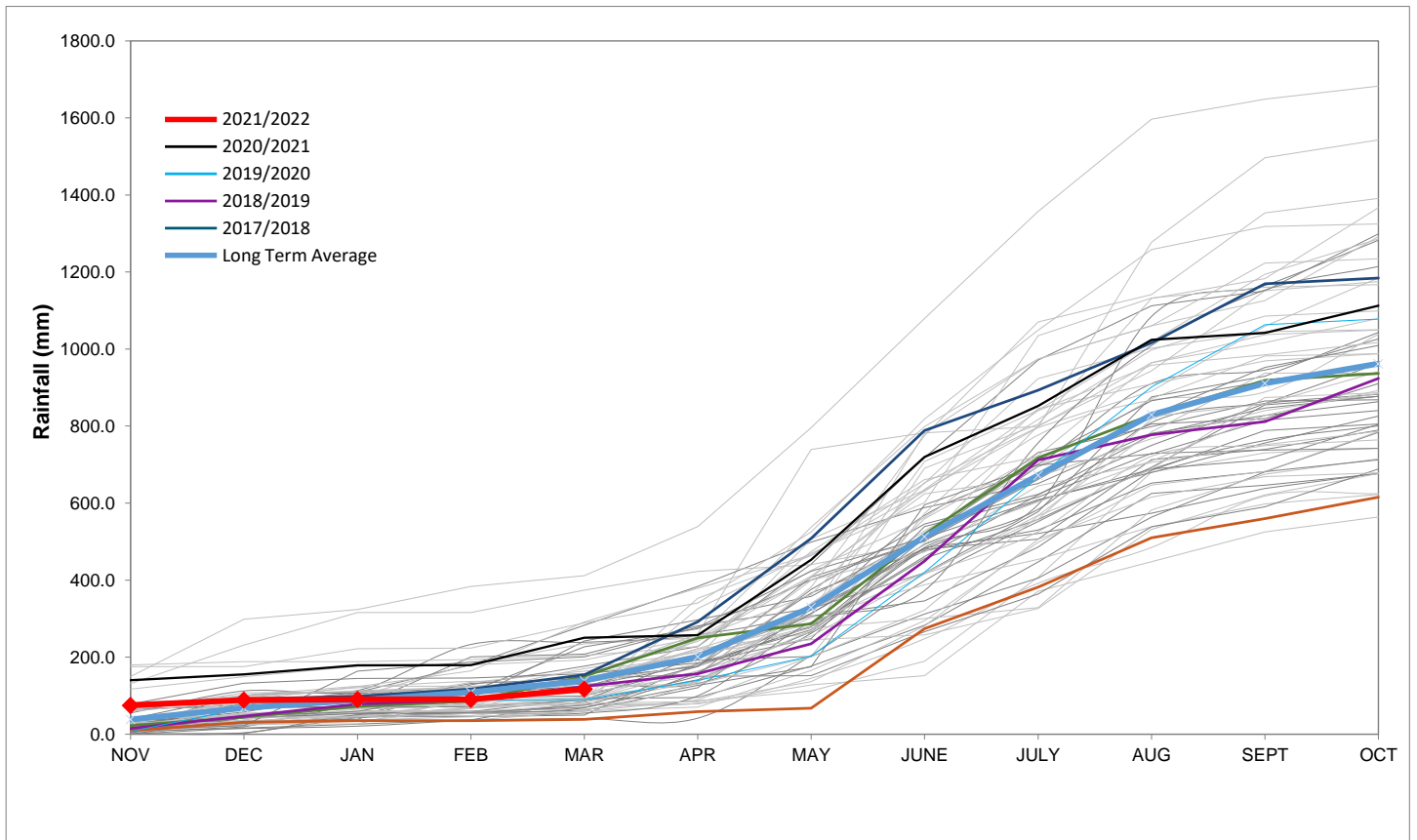
Rainfall Recorded

RAINFALL (mm)	04-Apr	05-Apr	06-Apr	07-Apr	08-Apr	09-Apr	10-Apr	Apr	
								Total*	LT Average
Blackheath Upper	0.0	2.0	3.0	0.0	0.0	0.0	0.0	5.0	36.1
Brooklands	10.0	5.0	3.0	0.0	0.0	0.0	0.0	18.0	61.9
Newlands	3.0	19.0	6.0	0.0	0.0	0.0	0.0	28.0	109.5
Steenbras	0.3	5.5	8.4	0.0	0.0	0.0	0.0	14.2	81.3
Table Mountain (Woodhead)	8.5	14.0	1.5	0.0	0.0	0.0	0.0	24.0	125.0
Theewaterskloof	0.0	3.1	2.1	0.0	0.0	0.0	0.0	5.2	53.3
Tygerberg	0.0	4.4	2.4	0.0	0.0	0.0	0.0	6.8	35.7
Voëlville	1.0	5.5	3.0	0.0	0.0	0.0	0.0	9.5	40.2
Wemmershoek	5.0	6.2	3.5	0.0	0.0	0.0	0.0	14.7	67.8
Wynberg	7.9	8.0	0.0	0.0	0.0	0.0	0.0	15.9	62.9

Notes: *Total/cummulative rainfall for month indicated above
LT: Long Term

Accumulated Monthly Rainfall at Wemmershoek

Note: Wemmershoek station used due to long record and mountainous location



Drinking Water Quality

SAMPLE PASS RATE

Month	Water Quality Compliance (%)	Target (%)
Jan-21	99.16	98
Feb-21	99.12	98
Mar-21	99.08	98
Apr-21	99.07	98
May-21	98.98	98
Jun-21	99.11	98
Jul-21	99.10	98
Aug-21	99.12	98
Sep-21	99.09	98
Oct-21	99.11	98
Nov-21	99.11	98
Dec-21	99.09	98
Jan-22	99.04	98
Feb-22	99.04	98
Mar-22	98.99	98

Notes:

This table shows CCT drinking water quality compliance according to the South African National Standard 241:2015. Compliance, measured against all prescribed chemical and microbiological components, consistently exceeds the very high CCT target of 98%. (Overall compliance percentages of continuous sampling and analysis are released on a monthly basis.