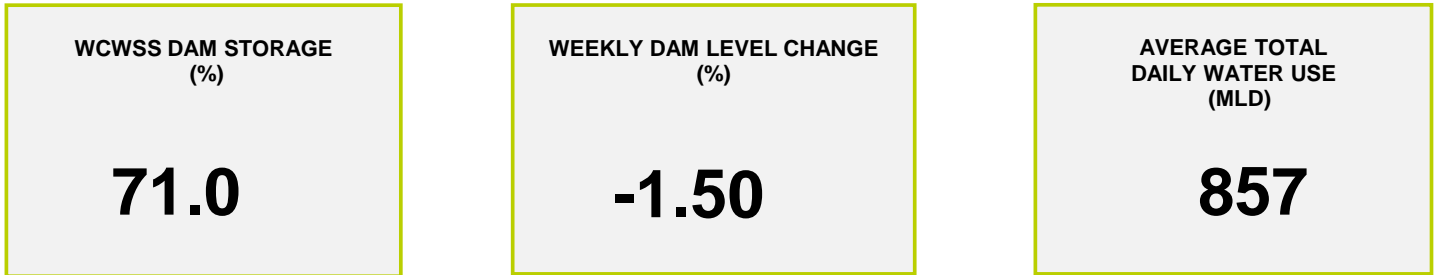
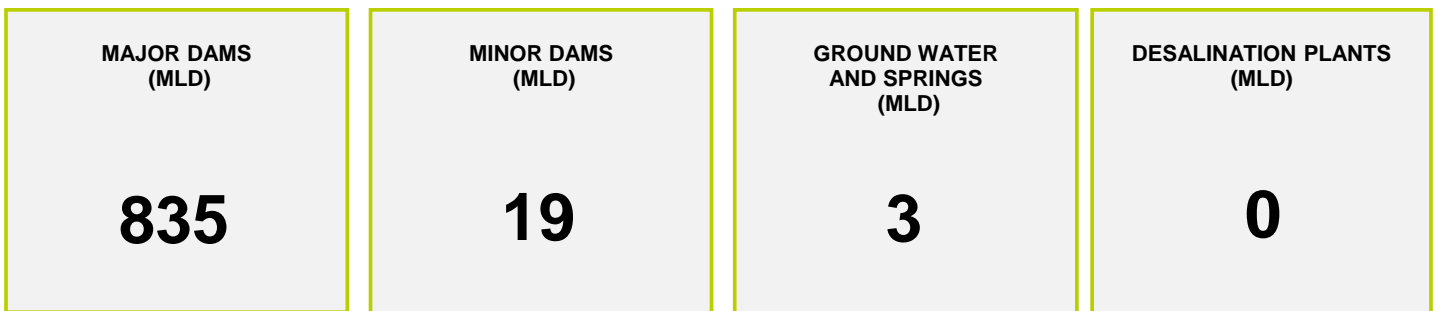




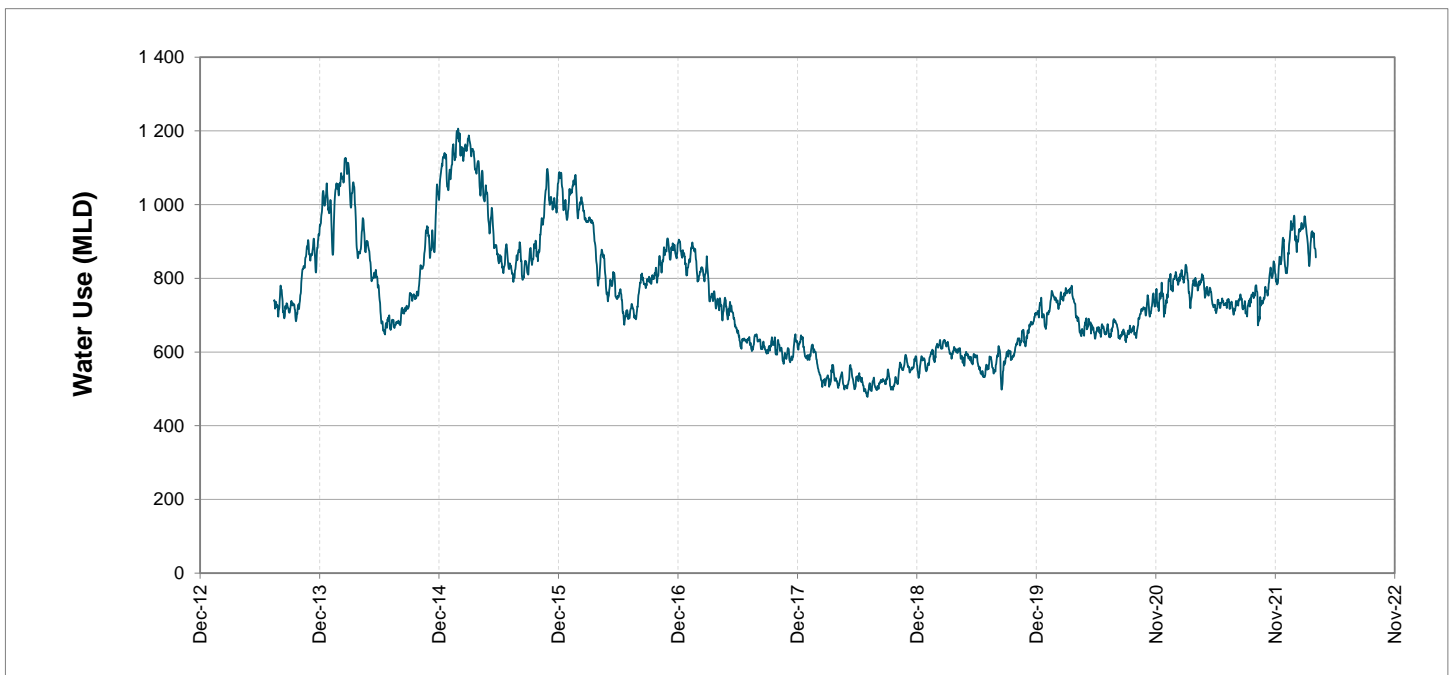
Headline Statistics



Water Production from Different Sources



Overall Water Usage Trend (2010 - Present)



WCWSS means Western Cape Water Supply System

MLD means million litres per day

More information on Water Saving and Restrictions is available on the City of Cape Town's 'ThinkWater' website

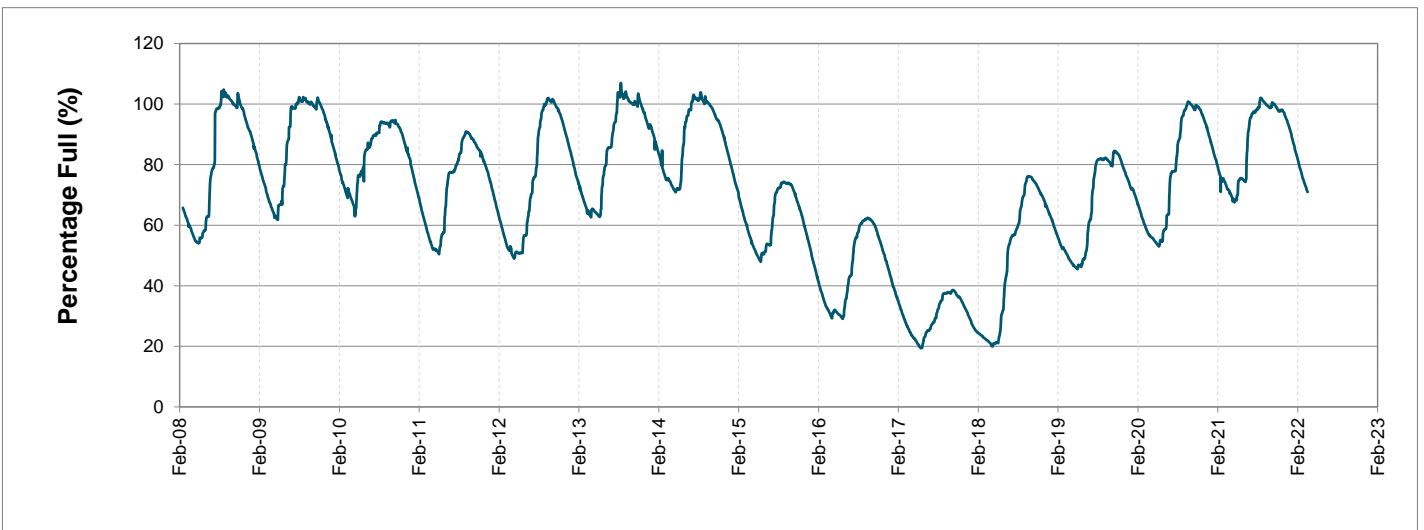
Water Stored in Major Dams (WCWSS)

Overall Percentage Full **71.0%**

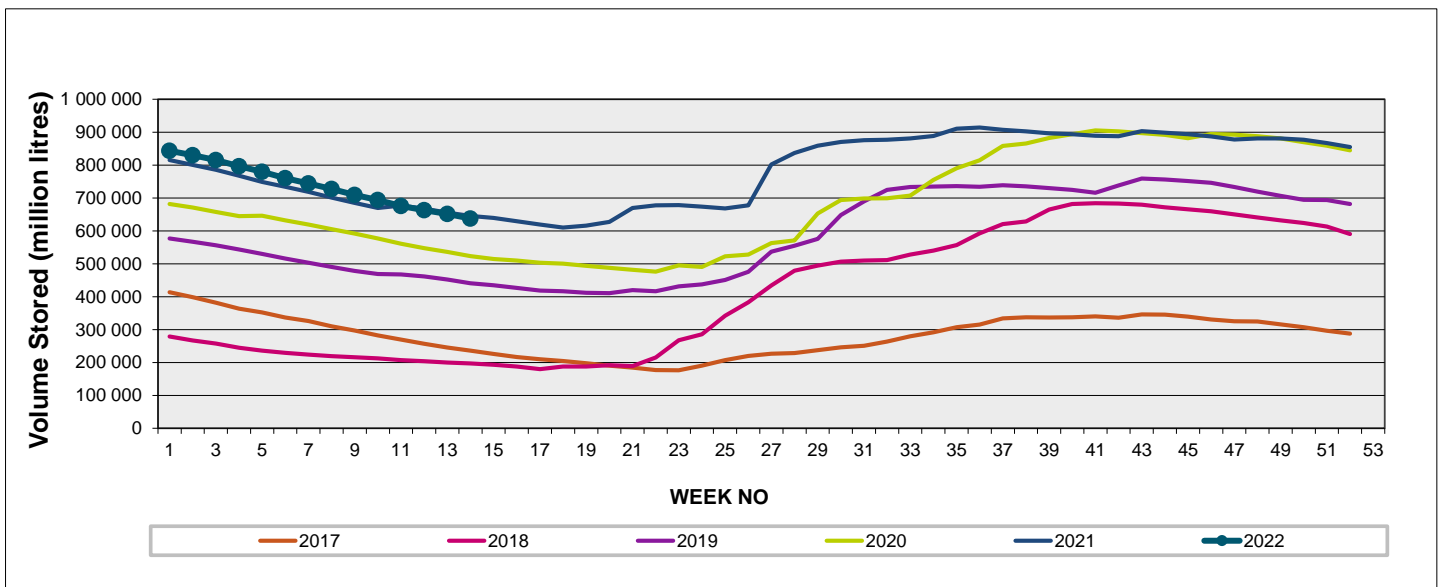
Weekly Change **-1.5%**

MAJOR DAMS (WCWSS)	STORAGE						
	CAPACITY	%	%	%	%	%	%
	MI	04 April 2022	Previous week	2021	2020	2019	2018
BERG RIVER	130 010	73.1	74.2	74.7	67.8	70.7	44.4
STEENBRAS LOWER	33 517	69.4	70.4	62.1	58.8	46.3	36.4
STEENBRAS UPPER	31 767	91.5	92.2	53.0	96.9	69.4	80.7
THEEWATERSKLOOF	480 188	72.9	74.5	76.1	53.4	38.8	10.5
VOËLVLEI	164 095	64.0	65.8	64.5	54.5	60.6	14.4
WEMMERSHOEK	58 644	59.8	61.6	68.8	54.1	53.7	44.0
TOTAL STORED	898 221	637 308	651 553	646 224	516 291	446 977	195 647
% STORAGE		71.0%	72.5%	71.9%	57.5%	49.8%	21.8%

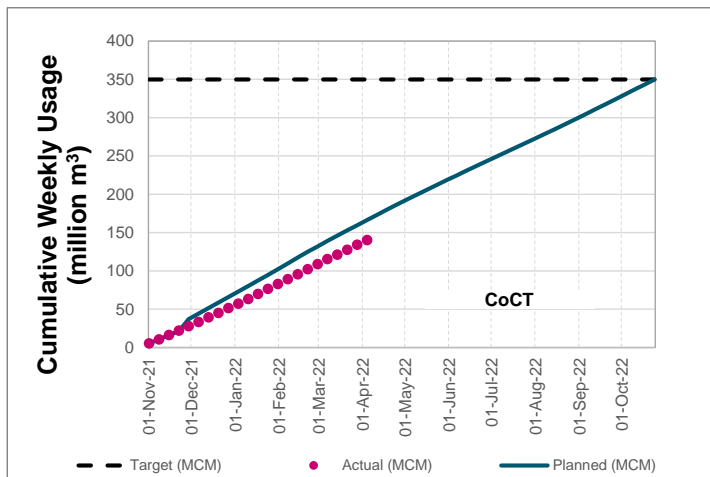
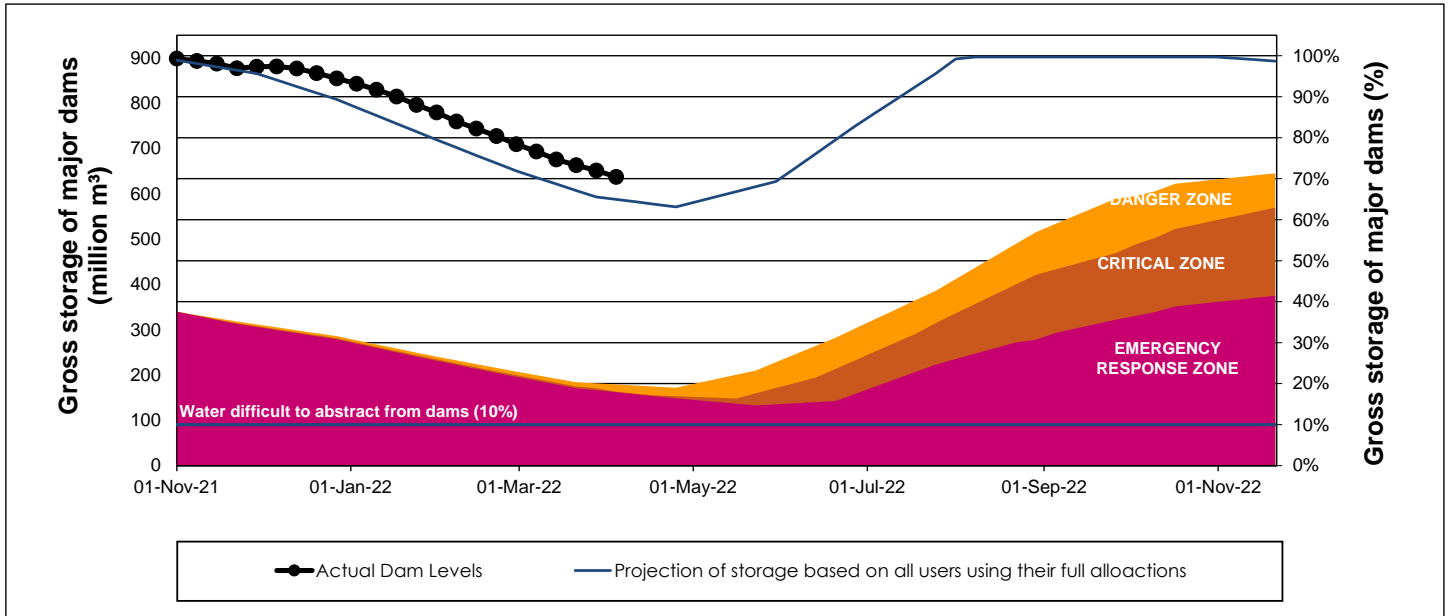
WCWSS Storage Record (2008 - Present)



WCWSS Comparative Storage Graph



WCWSS Dam Storage and Water Use Tracking



Water Stored in Minor Dams

Overall Percentage Full **51.7**

Weekly Change **0.89**

MINOR DAMS	STORAGE						
	CAPACITY	%	%	%	%	%	%
	MI	04 April 2022	Previous week	2021	2020	2019	2018
ALEXANDRA (Table Mountain)	126	57.3	57.7	10.6	32.7	0.0	47.5
DE VILLIERS (Table Mountain)	243	65.9	65.5	55.1	93.4	60.2	55.8
HELY-HUTCHINSON (Table Mount)	925	14.0	8.5	14.4	0.0	15.9	85.4
KLEINPLAATS (Simon's Town)	1 368	58.7	60.3	53.5	41.4	48.1	40.6
LAND-EN-ZEEZICHT (Helderberg)	451	78.5	79.6	71.1	58.5	94.3	91.9
LEWIS GAY (Simon's Town)	182	9.0	17.3	59.8	0.0	0.0	57.7
VICTORIA (Table Mountain)	128	50.4	49.6	0.0	73.7	0.0	60.2
WOODHEAD (Table Mountain)	954	71.3	68.5	66.2	86.8	57.4	57.1
Total Stored	4 377	2262.4	2223.3	2045.4	2009.4	1912.3	2670.2
Percentages stored		51.7	50.8	46.7	45.9	43.7	61.0

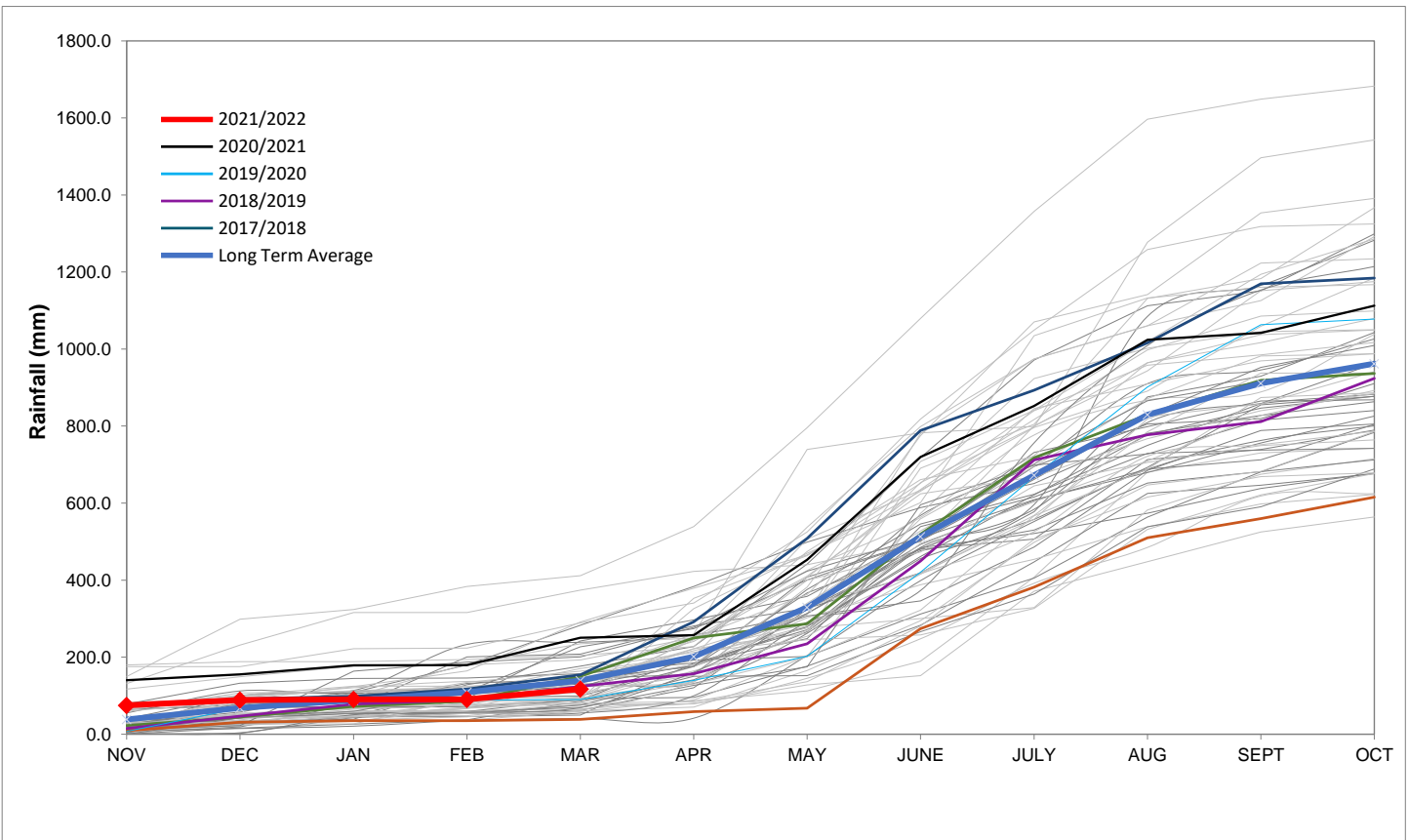
Rainfall Recorded

RAINFALL (mm)	28-Mar	29-Mar	30-Mar	31-Mar	01-Apr	02-Apr	03-Apr	Apr	
								Total*	LT Average
Blackheath Upper	0.0	4.0	0.0	0.0	0.0	0.0	0.0	0.0	36.1
Brooklands	3.0	4.0	1.0	0.0	0.0	0.0	0.0	0.0	61.9
Newlands	2.0	55.0	2.5	0.0	0.0	0.0	0.0	0.0	109.5
Steenbras	0.0	8.5	0.0	0.0	0.0	0.0	0.0	0.0	81.3
Table Mountain (Woodhead)	34.5	12.0	6.5	0.0	0.0	0.0		0.0	125.0
Theewaterskloof	0.0	0.0	0.0	0.0	0.0	0.0	0.0	0.0	53.3
Tygerberg	0.0	8.9	0.0	0.0	0.0	0.0	0.0	0.0	35.7
Voëlvllei	0.0	0.5	0.0	0.0	0.0	0.0	0.0	0.0	40.2
Wemmershoek	0.0	15.6	0.0	0.0	0.0	0.0	0.0	0.0	67.8
Wynberg	5.0	0.0	8.0	0.0	0.0	0.0	0.0	0.0	62.9

Notes: *Total/cummulative rainfall for month indicated above
LT: Long Term

Accumulated Monthly Rainfall at Wemmershoek

Note: Wemmershoek station used due to long record and mountainous location



Drinking Water Quality

SAMPLE PASS RATE

Month	Water Quality Compliance (%)	Target (%)
Dec-20	99.14	98
Jan-21	99.16	98
Feb-21	99.12	98
Mar-21	99.08	98
Apr-21	99.07	98
May-21	98.98	98
Jun-21	99.11	98
Jul-21	99.10	98
Aug-21	99.12	98
Sep-21	99.09	98
Oct-21	99.11	98
Nov-21	99.11	98
Dec-21	99.09	98
Jan-22	99.04	98
Feb-22	99.04	98

Notes:

This table shows CCT drinking water quality compliance according to the South African National Standard 241:2015. Compliance, measured against all prescribed chemical and microbiological components, consistently exceeds the very high CCT target of 98%. (Overall compliance percentages of continuous sampling and analysis are released on a monthly basis.