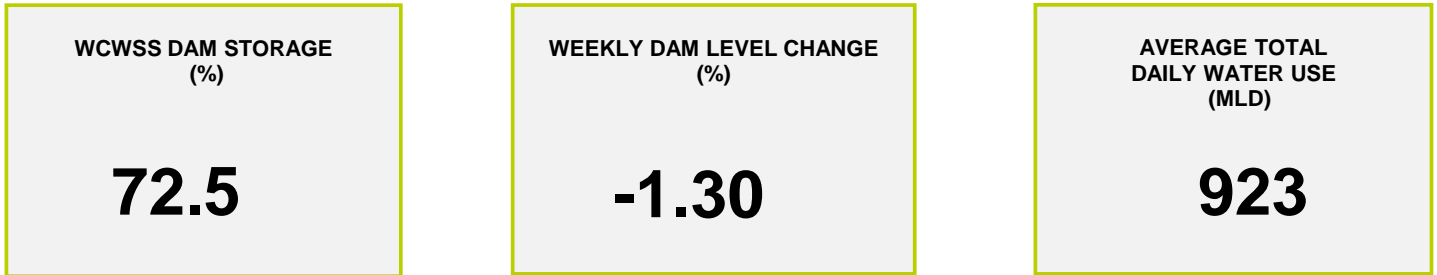
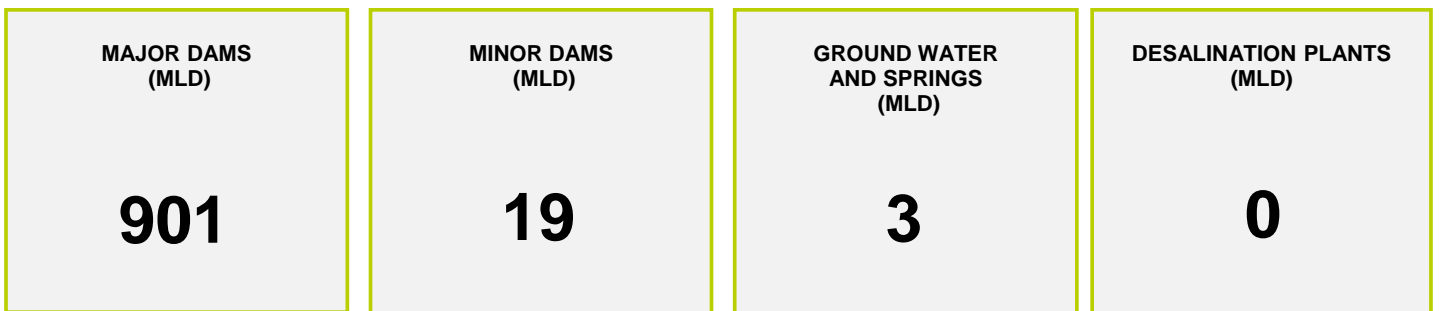




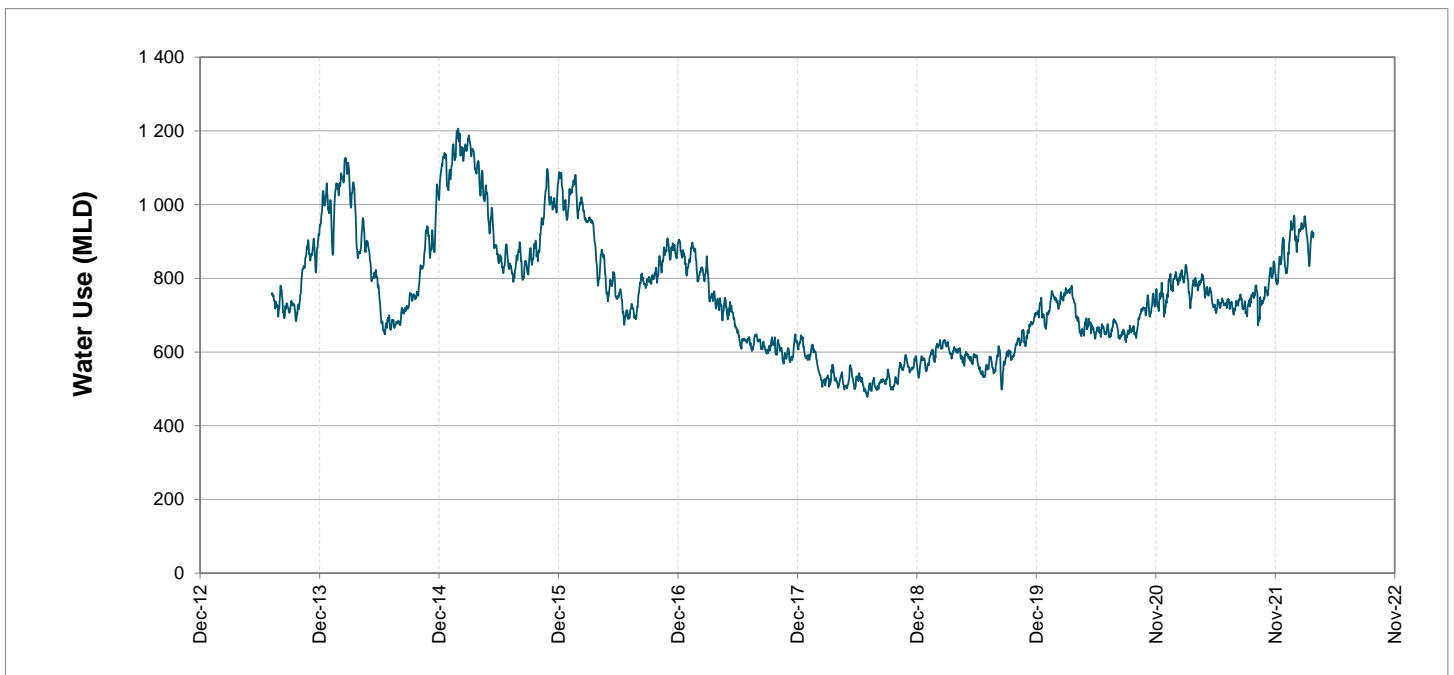
Headline Statistics



Water Production from Different Sources



Overall Water Usage Trend (2010 - Present)



WCWSS means Western Cape Water Supply System

MLD means million litres per day

More information on Water Saving and Restrictions is available on the City of Cape Town's 'ThinkWater' website

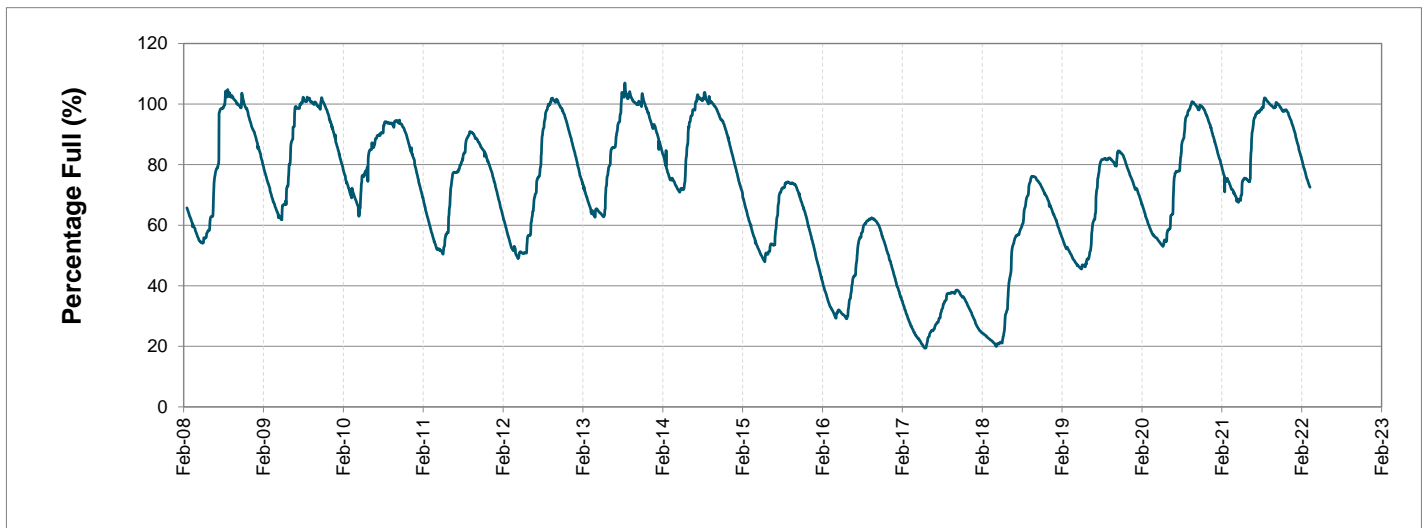
Water Stored in Major Dams (WCWSS)

Overall Percentage Full **72.5%**

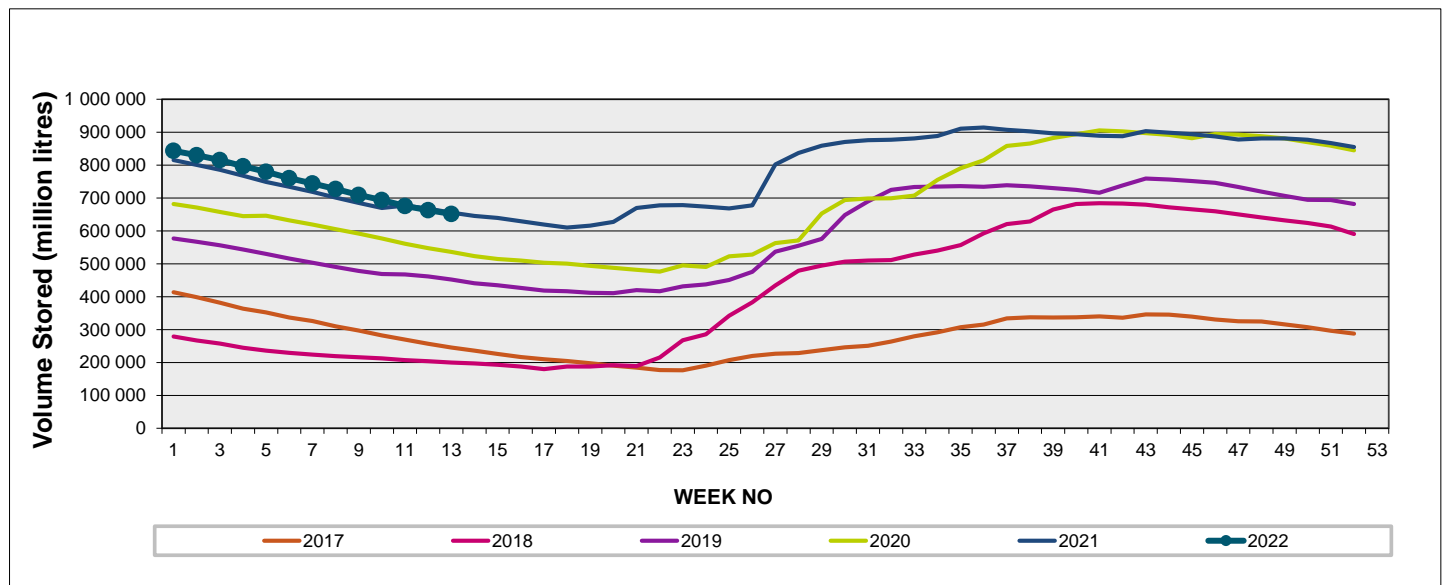
Weekly Change **-1.3%**

MAJOR DAMS (WCWSS)	STORAGE						
	CAPACITY	%	%	%	%	%	%
	MI	28 March 2022	Previous week	2021	2020	2019	2018
BERG RIVER	130 010	74.2	75.8	75.7	69.3	72.0	45.8
STEENBRAS LOWER	33 517	70.4	71.1	63.5	60.8	48.1	37.8
STEENBRAS UPPER	31 767	92.2	92.7	52.7	99.9	69.6	81.9
THEEWATERSKLOOF	480 188	74.5	75.8	77.2	54.4	39.6	10.6
VOËLVLEI	164 095	65.8	67.1	66.0	56.1	61.7	14.5
WEMMERSHOEK	58 644	61.6	63.1	70.8	55.8	55.6	43.8
TOTAL STORED	898 221	651 553	663 035	656 778	528 160	455 967	198 737
% STORAGE		72.5%	73.8%	73.1%	58.8%	50.8%	22.1%

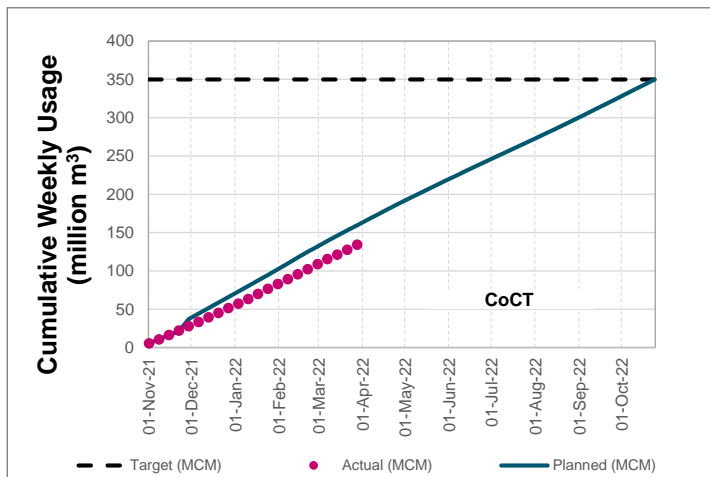
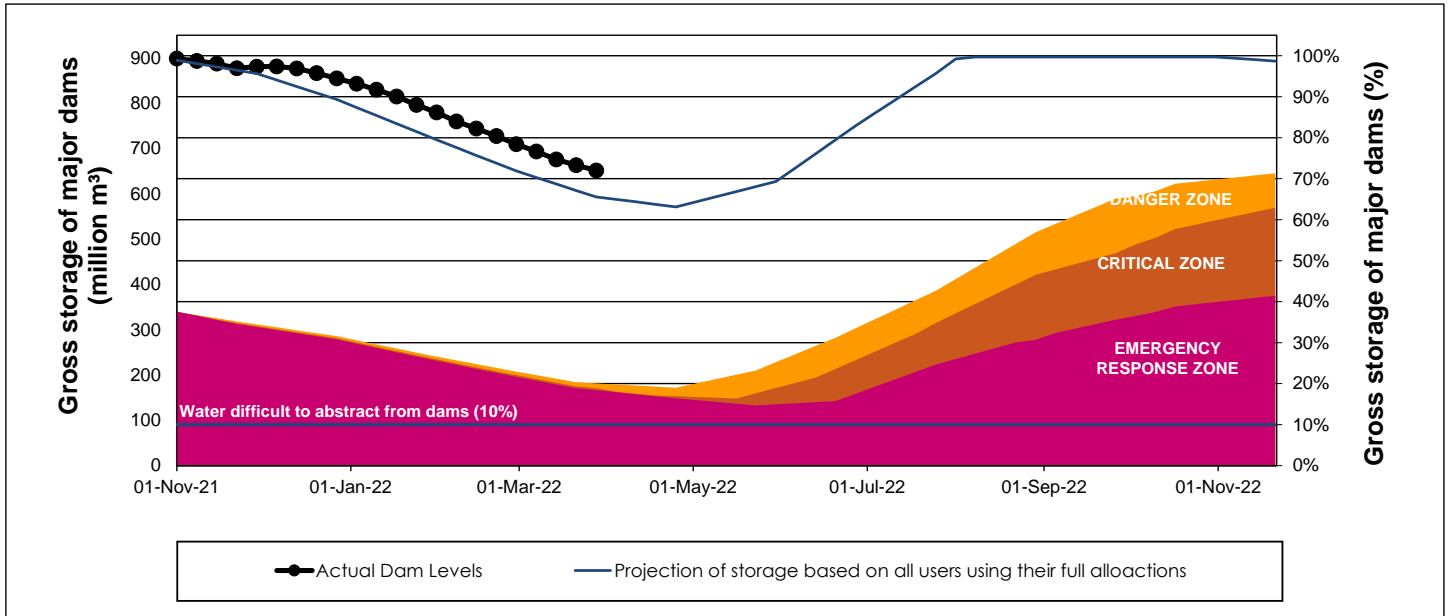
WCWSS Storage Record (2008 - Present)



WCWSS Comparative Storage Graph



WCWSS Dam Storage and Water Use Tracking



Water Stored in Minor Dams

Overall Percentage Full **50.8**

Weekly Change **-1.45**

MINOR DAMS	STORAGE						
	CAPACITY	%	%	%	%	%	%
	MI	28 March 2022	Previous week	2021	2020	2019	2018
ALEXANDRA (Table Mountain)	126	57.7	59.1	34.9	33.0	0.0	42.1
DE VILLIERS (Table Mountain)	243	65.5	65.6	47.2	94.0	60.5	54.9
HELY-HUTCHINSON (Table Mount)	925	8.5	7.9	19.1	0.0	33.7	91.8
KLEINPLAATS (Simon's Town)	1 368	60.3	61.9	54.0	42.3	48.7	41.2
LAND-EN-ZEEZICHT (Helderberg)	451	79.6	80.7	72.5	59.9	93.3	90.0
LEWIS GAY (Simon's Town)	182	17.3	23.9	68.3	0.0	0.0	54.4
VICTORIA (Table Mountain)	128	49.6	51.3	0.0	75.3	0.0	68.8
WOODHEAD (Table Mountain)	954	68.5	71.5	62.2	86.9	47.7	55.9
Total Stored	4 377	2223.3	2286.6	2092.2	2032.1	1988.9	2712.7
Percentages stored		50.8	52.2	47.8	46.4	45.4	62.0

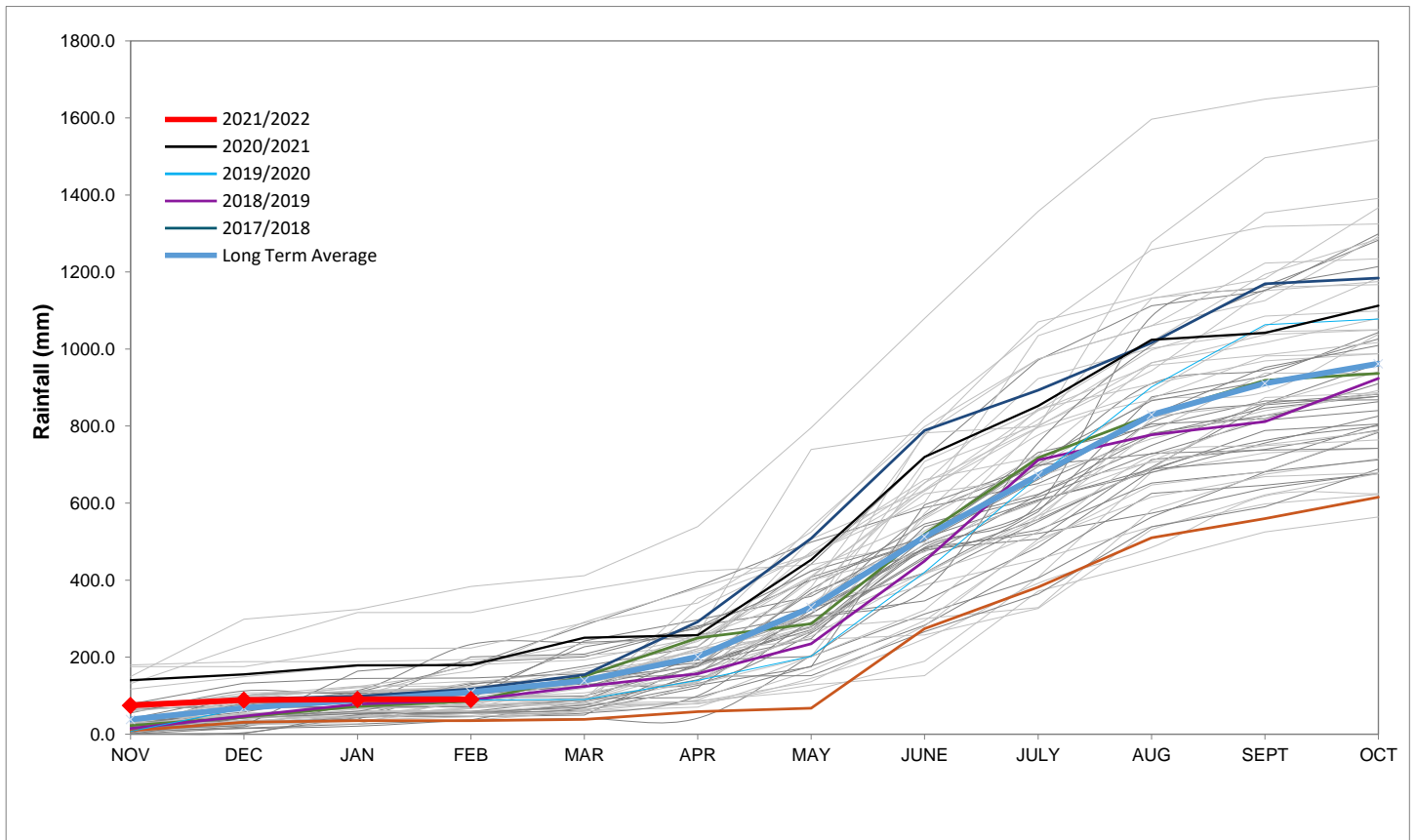
Rainfall Recorded

RAINFALL (mm)	21-Mar	22-Mar	23-Mar	24-Mar	25-Mar	26-Mar	27-Mar	Mar	
								Total*	LT Average
Blackheath Upper	0.0	0.0	0.0	0.0	0.0	0.0	0.0	13.9	18.5
Brooklands	0.0	0.0	0.0	0.0	0.0	0.0	0.0	29.0	36.3
Newlands	0.0	5.0	0.0	0.0	0.0	0.0	0.0	48.0	46.0
Steenbras	0.0	0.0	0.0	0.0	0.0	0.0	0.0	29.9	39.0
Table Mountain (Woodhead)	0.0	0.3	0.0	0.0	0.0	0.0	0.0	38.8	58.7
Theewaterskloof	0.0	0.0	27.3	5.4	0.2	0.0	0.0	38.9	26.9
Tygerberg	0.0	0.0	0.0	0.0	0.0	0.0	0.0	9.9	15.0
Voëlville	0.0	0.0	0.0	0.0	0.0	0.0	0.0	13.0	12.9
Wemmershoek	0.0	0.0	0.0	0.0	0.0	0.0	0.0	10.8	29.3
Wynberg	0.0	0.0	0.0	0.0	0.0	0.0	0.0	25.0	26.2

Notes: *Total/cumulative rainfall for month indicated above
LT: Long Term

Accumulated Monthly Rainfall at Wemmershoek

Note: Wemmershoek station used due to long record and mountainous location



Drinking Water Quality

SAMPLE PASS RATE

Month	Water Quality Compliance (%)	Target (%)
Dec-20	99.14	98
Jan-21	99.16	98
Feb-21	99.12	98
Mar-21	99.08	98
Apr-21	99.07	98
May-21	98.98	98
Jun-21	99.11	98
Jul-21	99.10	98
Aug-21	99.12	98
Sep-21	99.09	98
Oct-21	99.11	98
Nov-21	99.11	98
Dec-21	99.09	98
Jan-22	99.04	98
Feb-22	99.04	98

Notes:

This table shows CCT drinking water quality compliance according to the South African National Standard 241:2015. Compliance, measured against all prescribed chemical and microbiological components, consistently exceeds the very high CCT target of 98%. (Overall compliance percentages of continuous sampling and analysis are released on a monthly basis.