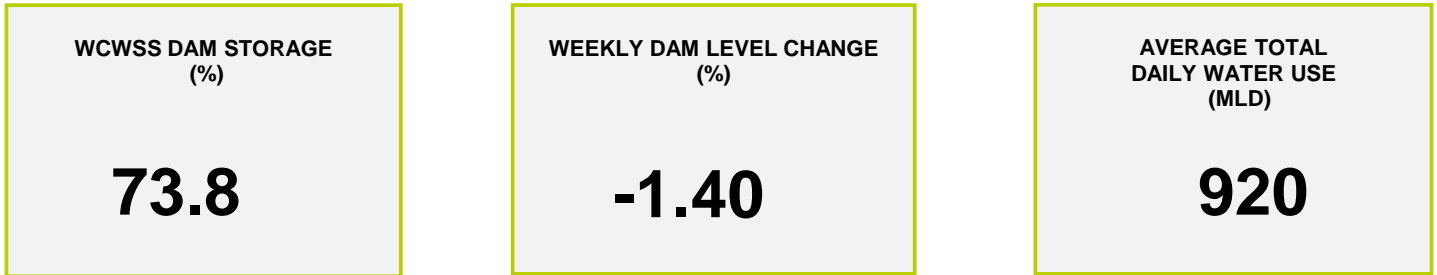
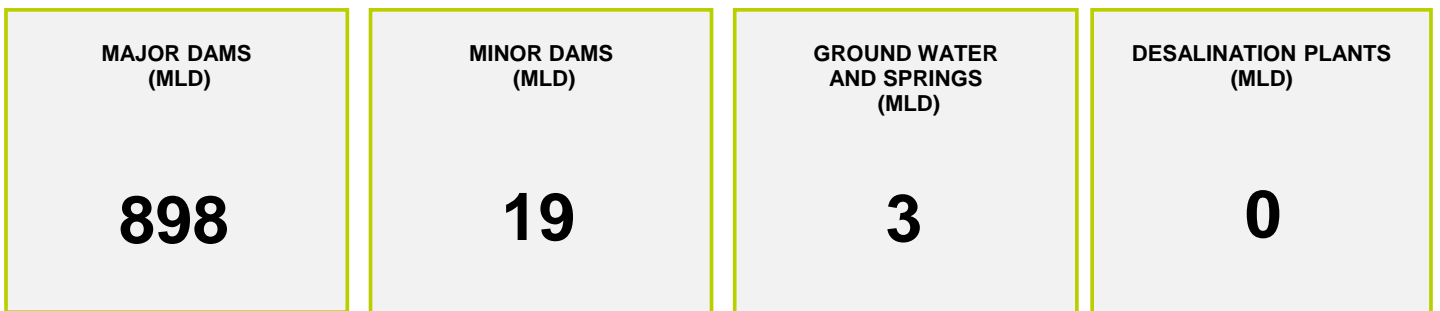




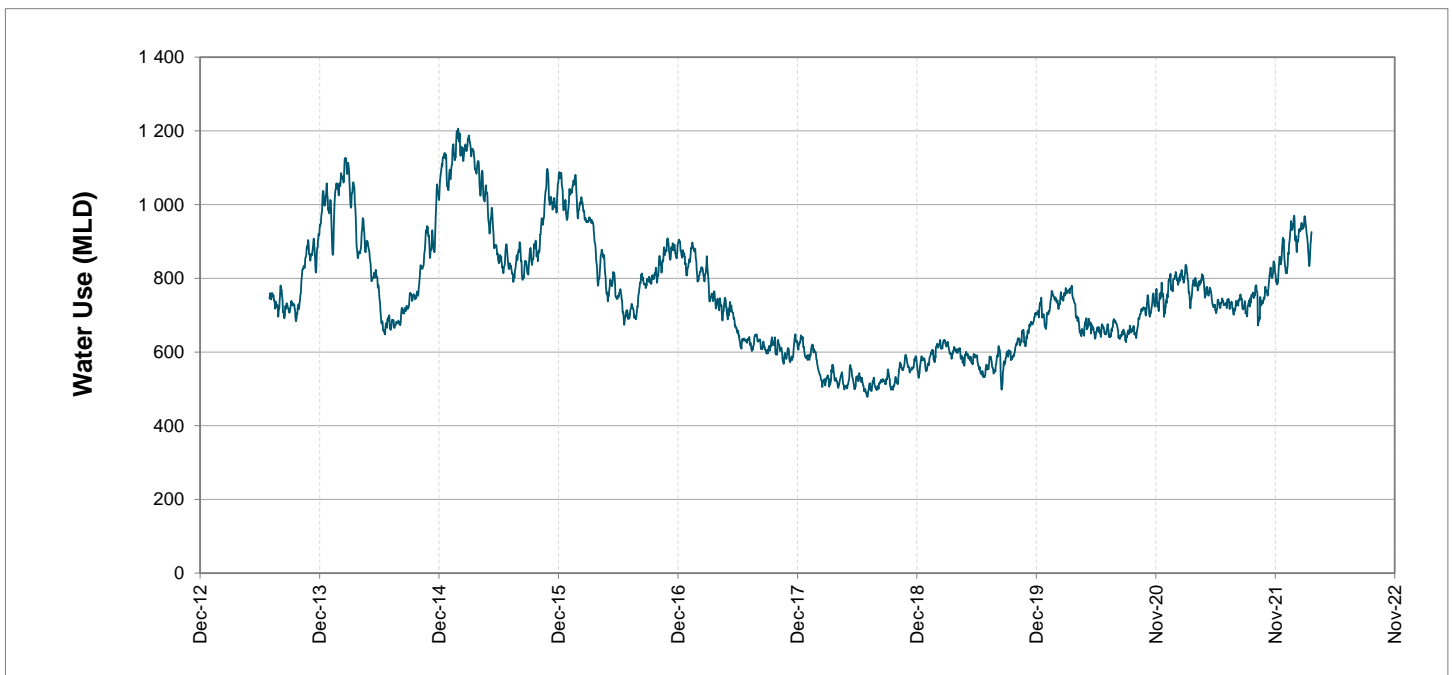
Headline Statistics



Water Production from Different Sources



Overall Water Usage Trend (2010 - Present)



WCWSS means Western Cape Water Supply System

MLD means million litres per day

More information on Water Saving and Restrictions is available on the City of Cape Town's 'ThinkWater' website

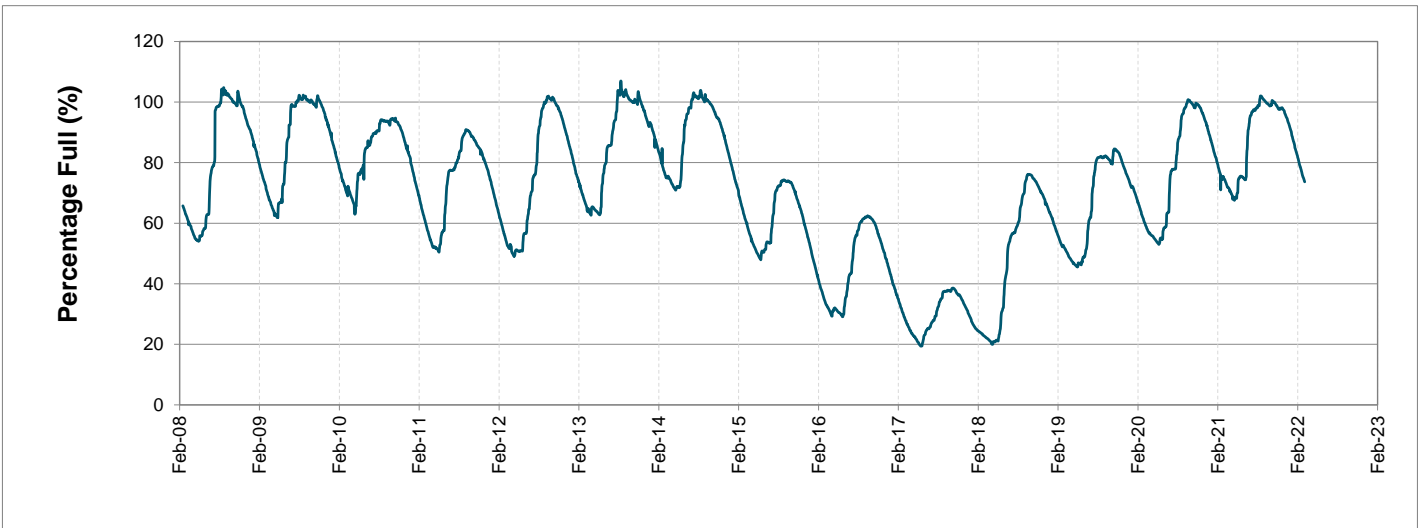
Water Stored in Major Dams (WCWSS)

Overall Percentage Full **73.8%**

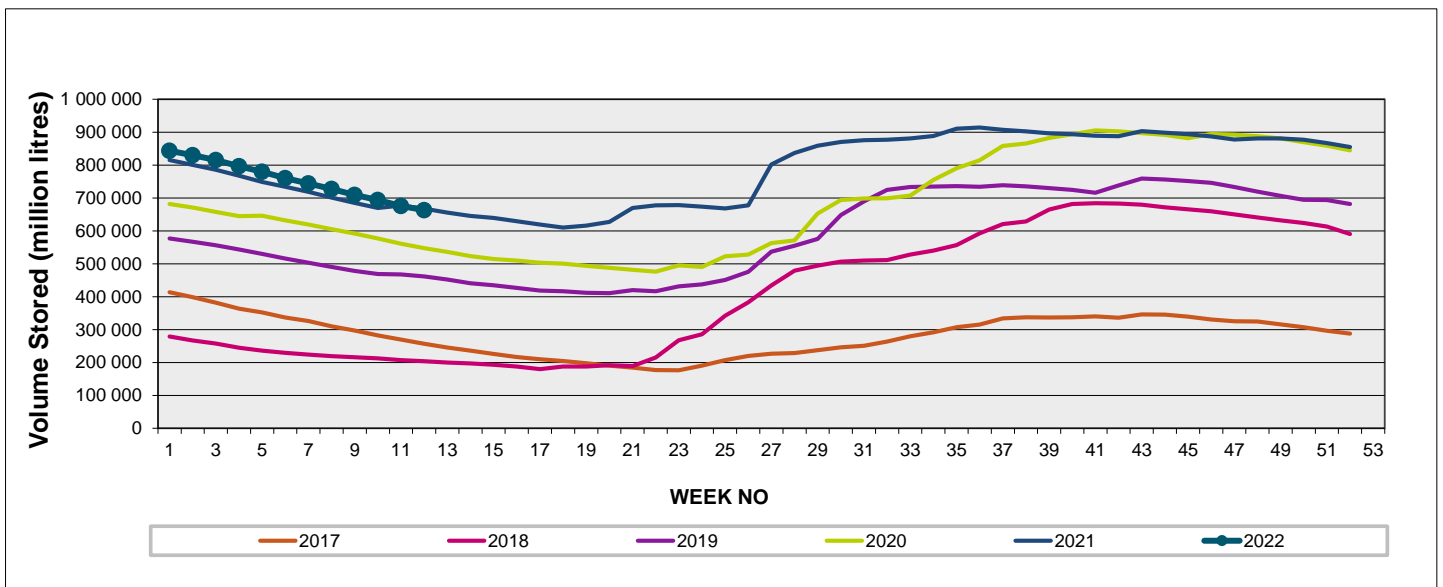
Weekly Change **-1.4%**

MAJOR DAMS (WCWSS)	STORAGE						
	CAPACITY	%	%	%	%	%	%
	MI	21 March 2022	Previous week	2021	2020	2019	2018
BERG RIVER	130 010	75.8	76.3	76.9	71.0	73.0	47.2
STEENBRAS LOWER	33 517	71.1	72.3	65.7	62.6	49.7	39.8
STEENBRAS UPPER	31 767	92.7	86.7	52.8	97.4	69.9	85.1
THEEWATERSKLOOF	480 188	75.8	77.7	78.4	55.5	40.4	10.7
VOËLVLEI	164 095	67.1	69.1	67.4	57.7	62.7	14.7
WEMMERSHOEK	58 644	63.1	65.2	72.8	57.7	57.4	43.9
TOTAL STORED	898 221	663 035	675 807	668 665	539 483	464 517	202 896
% STORAGE		73.8%	75.2%	74.4%	60.1%	51.7%	22.6%

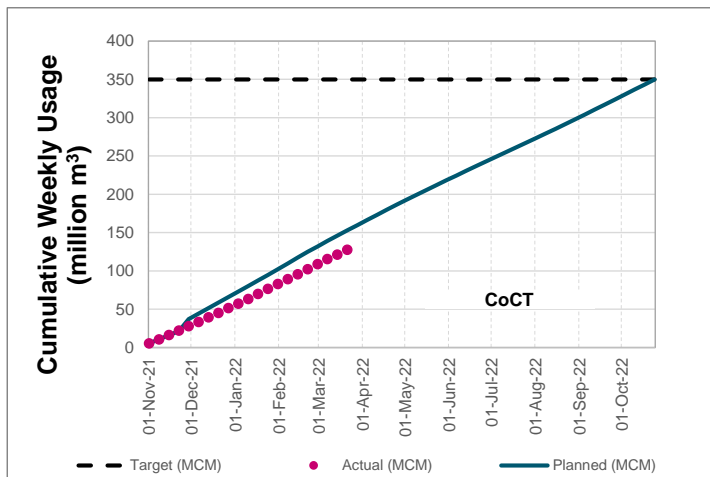
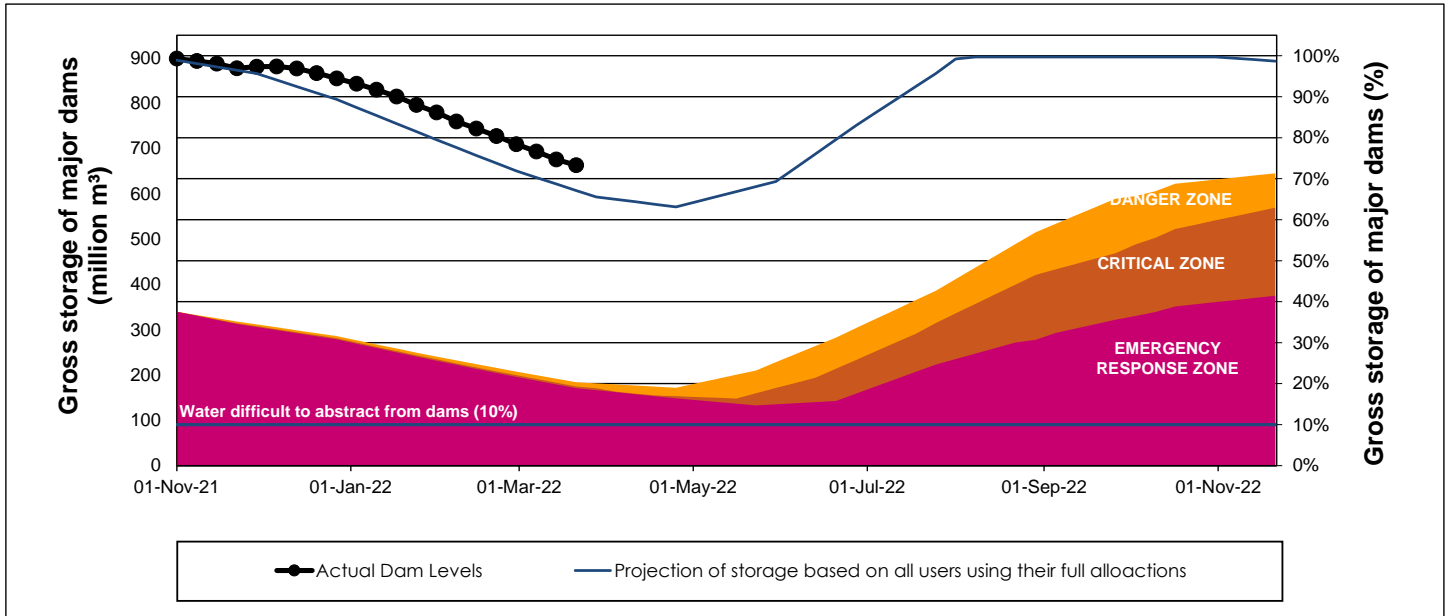
WCWSS Storage Record (2008 - Present)



WCWSS Comparative Storage Graph



WCWSS Dam Storage and Water Use Tracking



Water Stored in Minor Dams

Overall Percentage Full **52.2**

Weekly Change **-0.94**

MINOR DAMS	STORAGE						
	CAPACITY	%	%	%	%	%	%
	MI	21 March 2022	Previous week	2021	2020	2019	2018
ALEXANDRA (Table Mountain)	126	59.1	60.3	47.5	33.2	0.5	35.2
DE VILLIERS (Table Mountain)	243	65.6	65.7	50.4	94.5	60.9	54.6
HELY-HUTCHINSON (Table Mount)	925	7.9	11.2	23.5	0.0	35.8	94.9
KLEINPLAATS (Simon's Town)	1 368	61.9	63.4	55.4	43.4	50.1	42.1
LAND-EN-ZEEZICHT (Helderberg)	451	80.7	82.0	73.9	61.8	93.1	90.0
LEWIS GAY (Simon's Town)	182	23.9	30.1	78.0	0.0	0.0	60.5
VICTORIA (Table Mountain)	128	51.3	51.8	0.0	75.9	5.5	77.9
WOODHEAD (Table Mountain)	954	71.5	68.5	67.1	87.8	53.9	58.2
Total Stored	4 377	2286.6	2327.6	2244.9	2065.6	2093.0	2788.6
Percentages stored		52.2	53.2	51.3	47.2	47.8	63.7

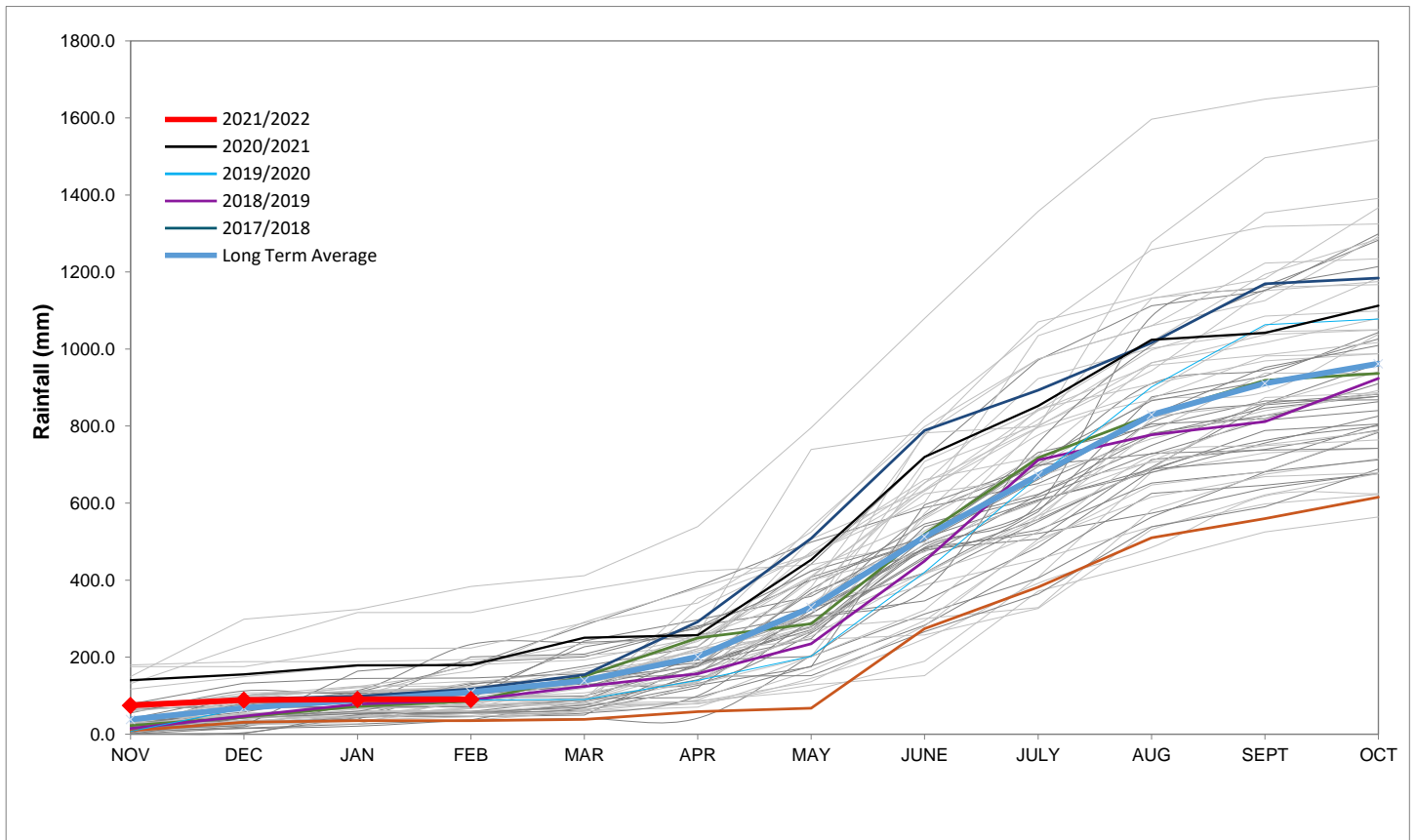
Rainfall Recorded

RAINFALL (mm)	14-Mar	15-Mar	16-Mar	17-Mar	18-Mar	19-Mar	20-Mar	Mar	
								Total*	LT Average
Blackheath Upper	0.0	0.0	0.0	0.0	0.0	0.0	0.0	13.9	18.5
Brooklands	0.0	0.0	0.0	0.0	0.0	0.0	0.0	29.0	36.3
Newlands	0.0	0.0	0.0	0.0	0.0	0.0	0.0	43.0	46.0
Steenbras	0.0	0.0	0.0	0.0	0.0	0.0	0.0	29.9	39.0
Table Mountain (Woodhead)	0.0	0.0	0.0	0.0	0.0	0.0	0.0	38.5	58.7
Theewaterskloof	0.0	0.0	0.0	0.0	0.0	0.0	0.0	6.0	26.9
Tygerberg	0.0	0.0	0.0	0.0	0.0	0.0	0.0	9.9	15.0
Voëlvlei	0.0	0.0	0.0	0.0	0.0	0.0	0.0	13.0	12.9
Wemmershoek	0.0	0.0	0.0	0.0	0.0	0.0	0.0	10.8	29.3
Wynberg	0.0	0.0	0.0	0.0	0.0	0.0	0.0	25.0	26.2

Notes: *Total/cummulative rainfall for month indicated above
LT: Long Term

Accumulated Monthly Rainfall at Wemmershoek

Note: Wemmershoek station used due to long record and mountainous location



Drinking Water Quality

SAMPLE PASS RATE

Month	Water Quality Compliance (%)	Target (%)
Dec-20	99.14	98
Jan-21	99.16	98
Feb-21	99.12	98
Mar-21	99.08	98
Apr-21	99.07	98
May-21	98.98	98
Jun-21	99.11	98
Jul-21	99.10	98
Aug-21	99.12	98
Sep-21	99.09	98
Oct-21	99.11	98
Nov-21	99.11	98
Dec-21	99.09	98
Jan-22	99.04	98
Feb-22	99.04	98

Notes:

This table shows CCT drinking water quality compliance according to the South African National Standard 241:2015. Compliance, measured against all prescribed chemical and microbiological components, consistently exceeds the very high CCT target of 98%. (Overall compliance percentages of continuous sampling and analysis are released on a monthly basis.