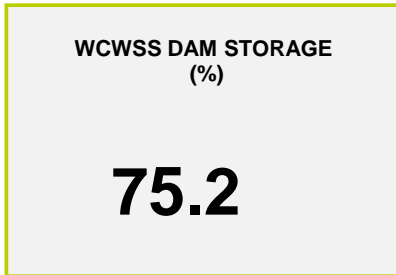
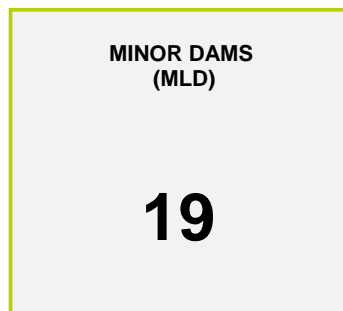
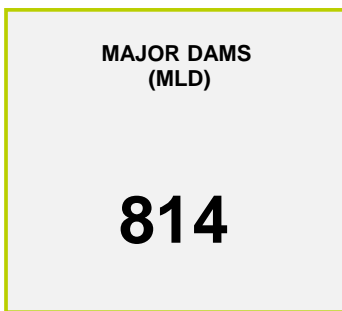




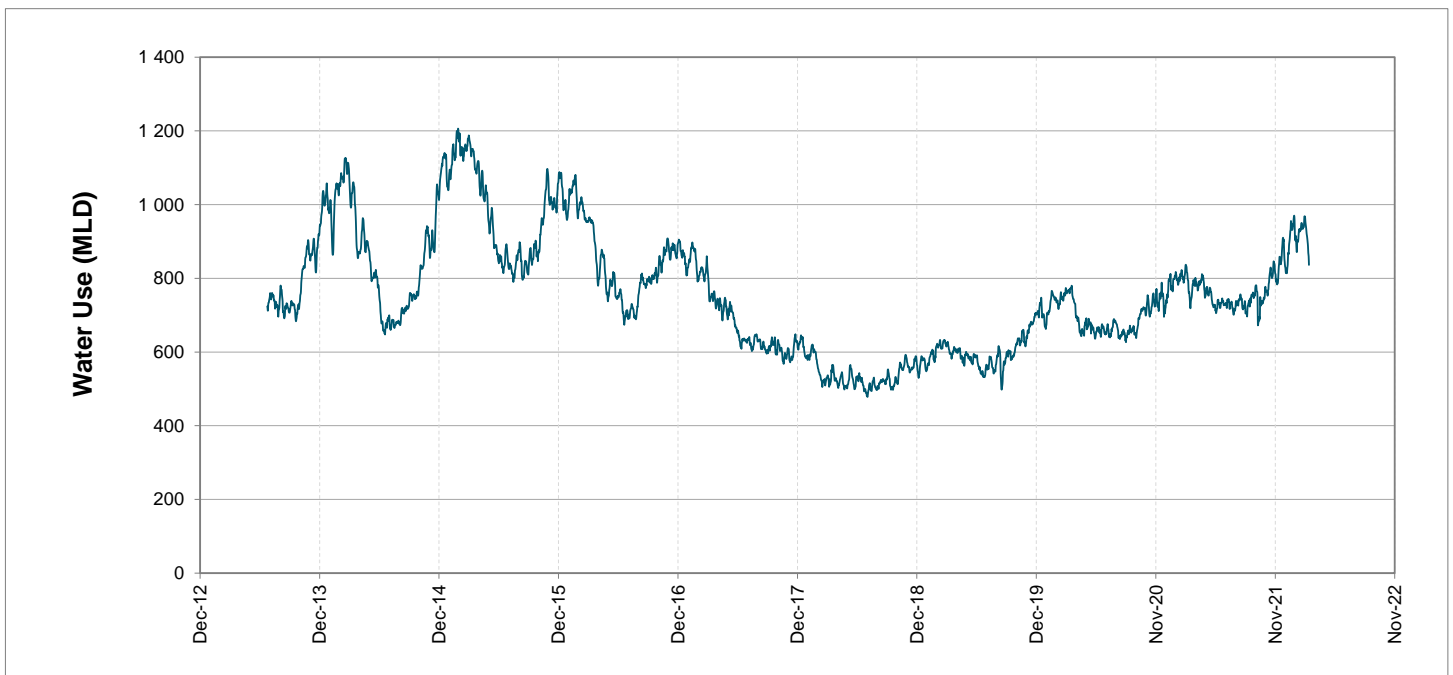
## Headline Statistics



## Water Production from Different Sources



## Overall Water Usage Trend (2010 - Present)



WCWSS means Western Cape Water Supply System

MLD means million litres per day

More information on Water Saving and Restrictions is available on the City of Cape Town's 'ThinkWater' website

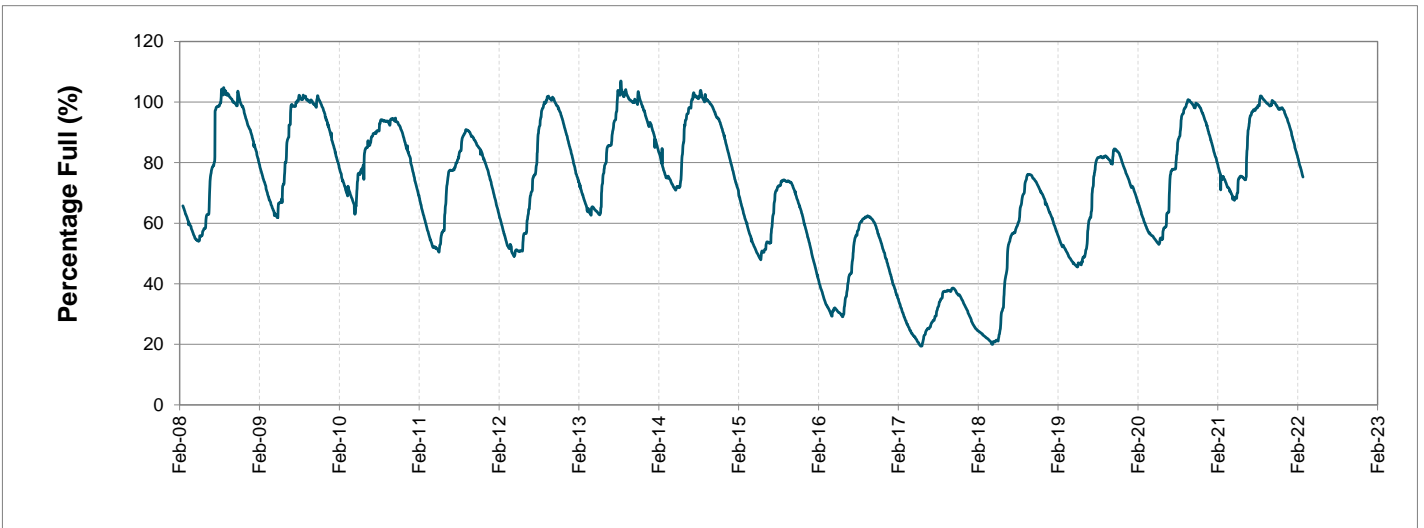
# Water Stored in Major Dams (WCWSS)

Overall Percentage Full **75.2%**

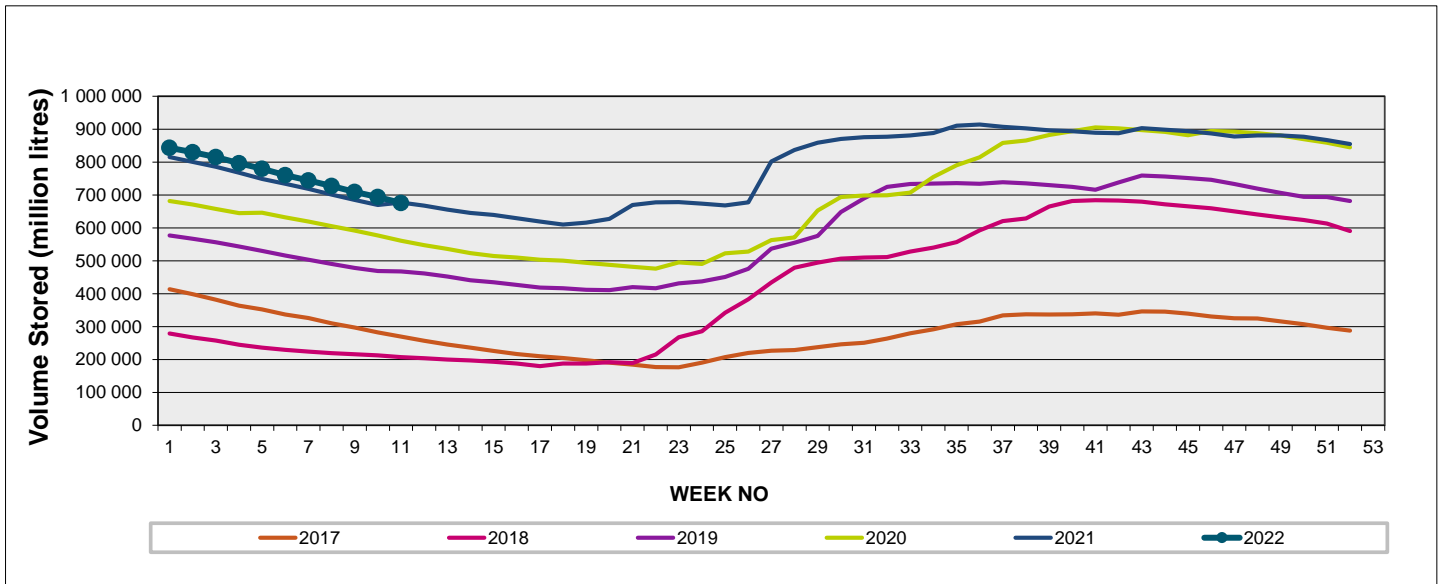
Weekly Change **-2.0%**

MAJOR DAMS (WCWSS)	STORAGE						
	CAPACITY	%	%	%	%	%	%
	MI	14 March 2022	Previous week	2021	2020	2019	2018
BERG RIVER	130 010	76.3	78.7	77.6	72.7	73.9	48.7
STEENBRAS LOWER	33 517	72.3	72.8	67.2	64.9	51.1	40.4
STEENBRAS UPPER	31 767	86.7	92.7	50.4	97.7	70.0	85.4
THEEWATERSKLOOF	480 188	77.7	79.5	79.7	56.8	41.5	10.8
VOËLVLEI	164 095	69.1	70.9	68.1	59.7	63.4	15.0
WEMMERSHOEK	58 644	65.2	67.2	74.9	59.5	59.1	43.9
<b>TOTAL STORED</b>	<b>898 221</b>	<b>675 807</b>	<b>693 566</b>	<b>677 979</b>	<b>552 942</b>	<b>473 558</b>	<b>206 387</b>
<b>% STORAGE</b>		<b>75.2%</b>	<b>77.2%</b>	<b>75.5%</b>	<b>61.6%</b>	<b>52.7%</b>	<b>23.0%</b>

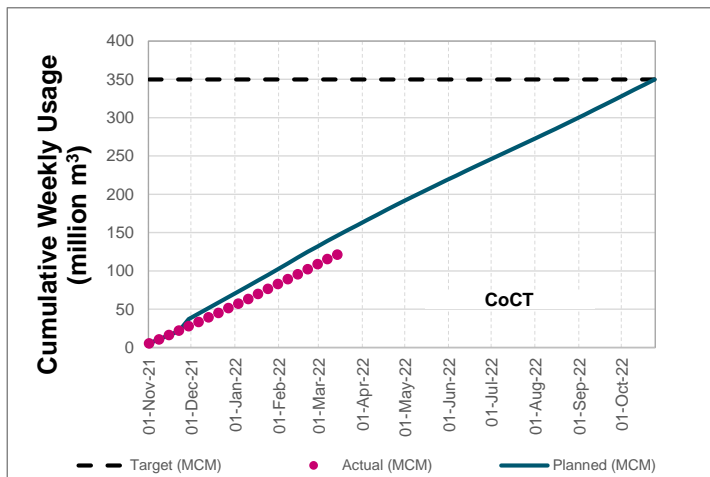
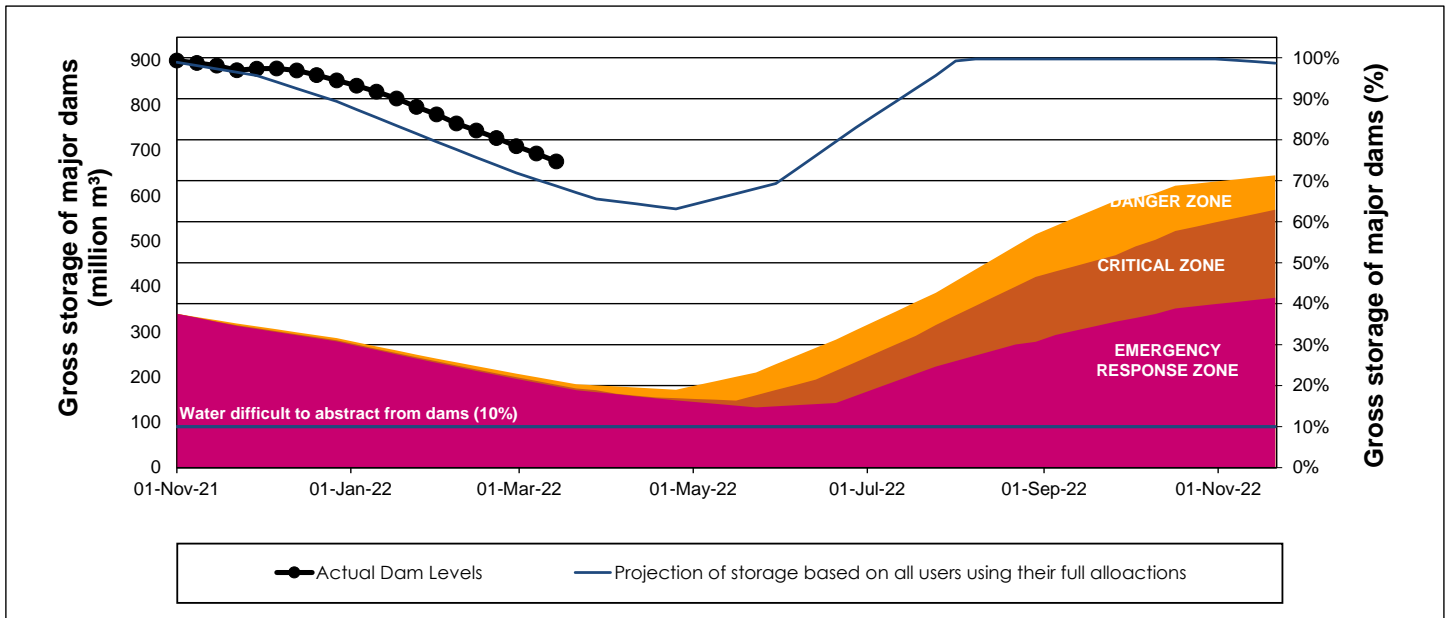
## WCWSS Storage Record (2008 - Present)



## WCWSS Comparative Storage Graph



# WCWSS Dam Storage and Water Use Tracking



## Water Stored in Minor Dams

Overall Percentage Full **53.0**

Weekly Change **-1.09**

MINOR DAMS	STORAGE						
	CAPACITY	%	%	%	%	%	%
	MI	14 March 2022	Previous week	2021	2020	2019	2018
ALEXANDRA (Table Mountain)	126	60.3	60.9	47.3	33.7	29.2	34.1
DE VILLIERS (Table Mountain)	243	62.2	65.0	61.2	95.3	51.1	60.5
HELY-HUTCHINSON (Table Mount)	925	11.2	20.5	22.7	0.0	34.8	95.1
KLEINPLAATS (Simon's Town)	1 368	63.4	63.8	56.4	44.9	52.6	42.8
LAND-EN-ZEEZICHT (Helderberg)	451	82.0	82.8	73.6	64.1	92.3	91.5
LEWIS GAY (Simon's Town)	182	30.1	37.9	82.7	0.0	0.0	71.5
VICTORIA (Table Mountain)	128	51.8	53.4	0.0	77.2	5.5	79.6
WOODHEAD (Table Mountain)	954	68.5	61.2	69.6	88.0	53.9	65.1
<b>Total Stored</b>	<b>4 377</b>	<b>2319.3</b>	<b>2367.2</b>	<b>2307.9</b>	<b>2102.9</b>	<b>2127.9</b>	<b>2904.9</b>
<b>Percentages stored</b>		<b>53.0</b>	<b>54.1</b>	<b>52.7</b>	<b>48.0</b>	<b>48.6</b>	<b>66.4</b>

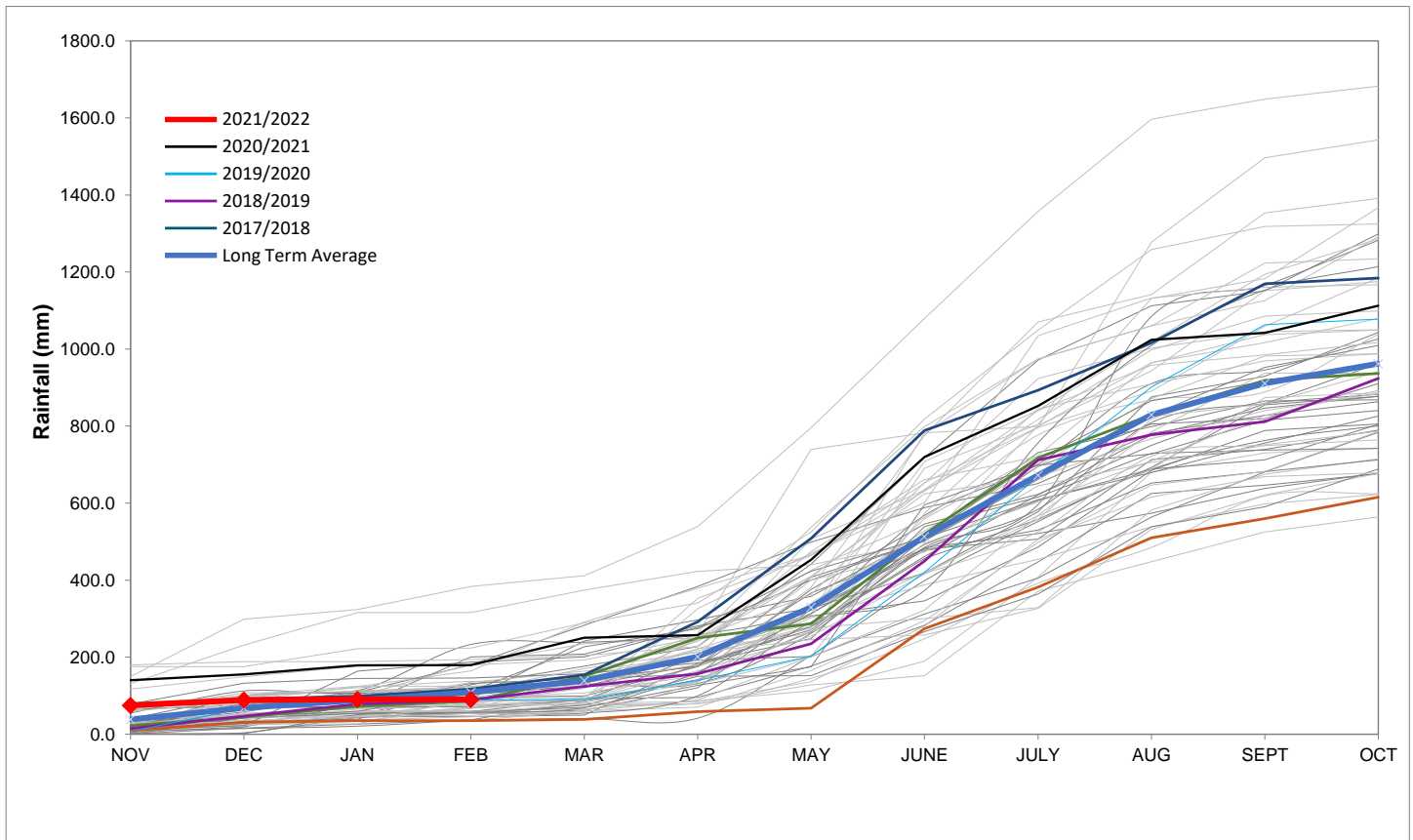
# Rainfall Recorded

RAINFALL (mm)	08-Mar	09-Mar	10-Mar	11-Mar	12-Mar	13-Mar	14-Mar	Mar	
								Total*	LT Average
Blackheath Upper	0.0	0.0	0.0	0.0	0.0	13.8		13.9	18.5
Brooklands	0.0	0.0	0.0	0.0	18.0	0.0		29.0	36.3
Newlands	0.0	0.0	0.0	0.0	16.0	7.0		43.0	46.0
Steenbras	0.0	0.0	0.0	0.0	19.1	2.5		29.9	39.0
Table Mountain (Woodhead)	0.0	0.0	0.0	0.0	31.0			38.5	58.7
Theewaterskloof	0.0	0.0	0.0	0.0	0.0	0.8		6.0	26.9
Tygerberg	0.0	0.0	0.0	0.0	1.0	8.1		9.9	15.0
Voëlvllei	0.0	0.0	0.0	3.0	3.0	7.0		13.0	12.9
Wemmershoek	0.0	0.0	0.0	0.0	0.0	4.3		10.8	29.3
Wynberg	0.0	0.0	0.0	0.0	6.0	4.0		25.0	26.2

Notes: \*Total/cummulative rainfall for month indicated above  
LT: Long Term

# Accumulated Monthly Rainfall at Wemmershoek

Note: Wemmershoek station used due to long record and mountainous location



## Drinking Water Quality

### SAMPLE PASS RATE

Month	Water Quality Compliance (%)	Target (%)
Nov-20	99.17	98
Dec-20	99.14	98
Jan-21	99.16	98
Feb-21	99.12	98
Mar-21	99.08	98
Apr-21	99.07	98
May-21	98.98	98
Jun-21	99.11	98
Jul-21	99.10	98
Aug-21	99.12	98
Sep-21	99.09	98
Oct-21	99.11	98
Nov-21	99.11	98
Dec-21	99.09	98
Jan-22	99.04	98

#### Notes:

This table shows CCT drinking water quality compliance according to the South African National Standard 241:2015. Compliance, measured against all prescribed chemical and microbiological components, consistently exceeds the very high CCT target of 98%. (Overall compliance percentages of continuous sampling and analysis are released on a monthly basis.