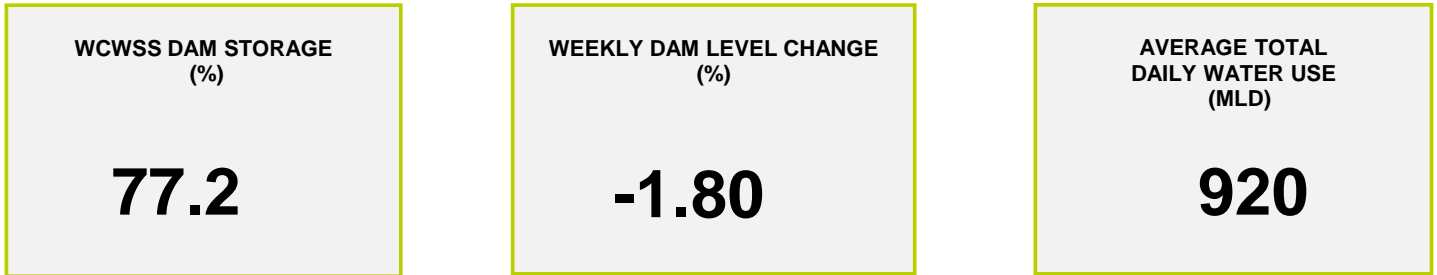
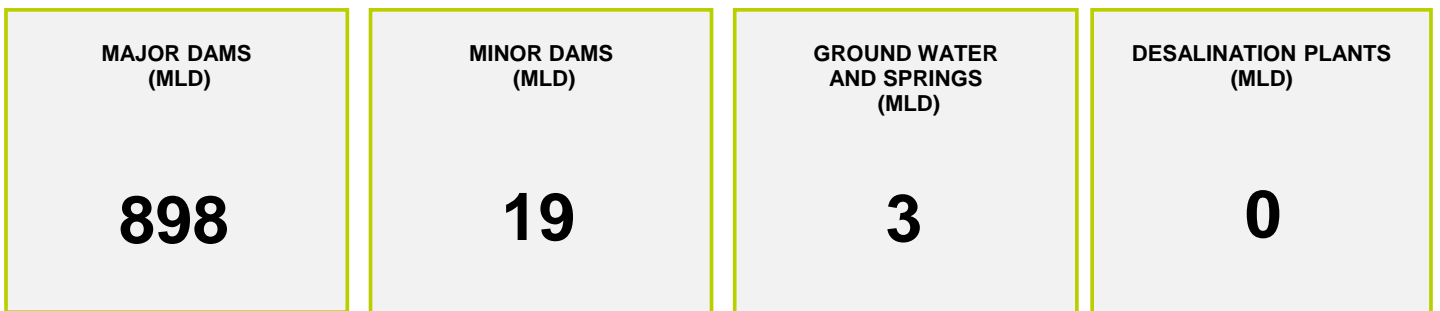




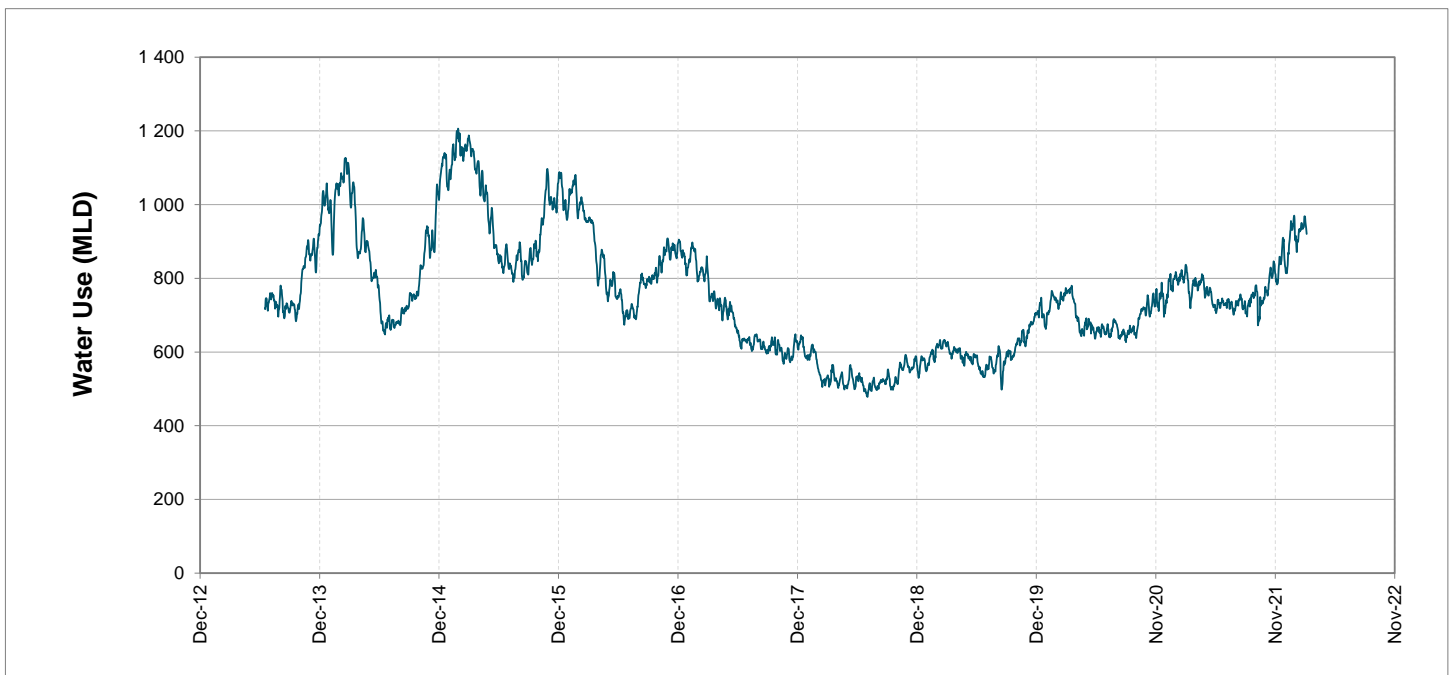
Headline Statistics



Water Production from Different Sources



Overall Water Usage Trend (2010 - Present)



WCWSS means Western Cape Water Supply System

MLD means million litres per day

More information on Water Saving and Restrictions is available on the City of Cape Town's 'ThinkWater' website

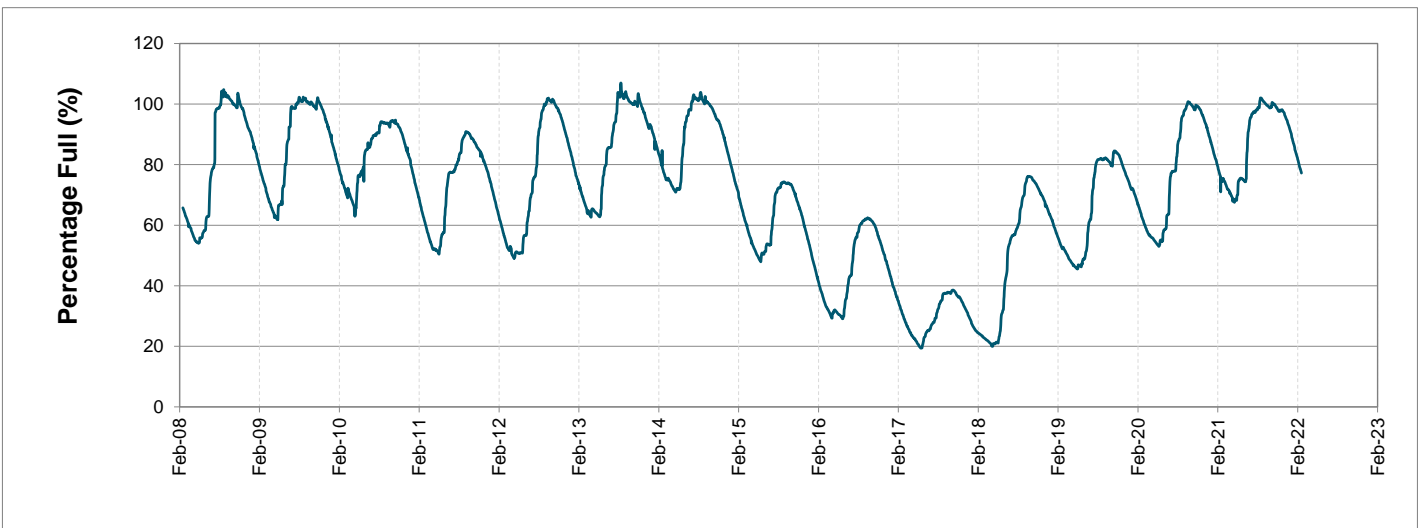
Water Stored in Major Dams (WCWSS)

Overall Percentage Full **77.2%**

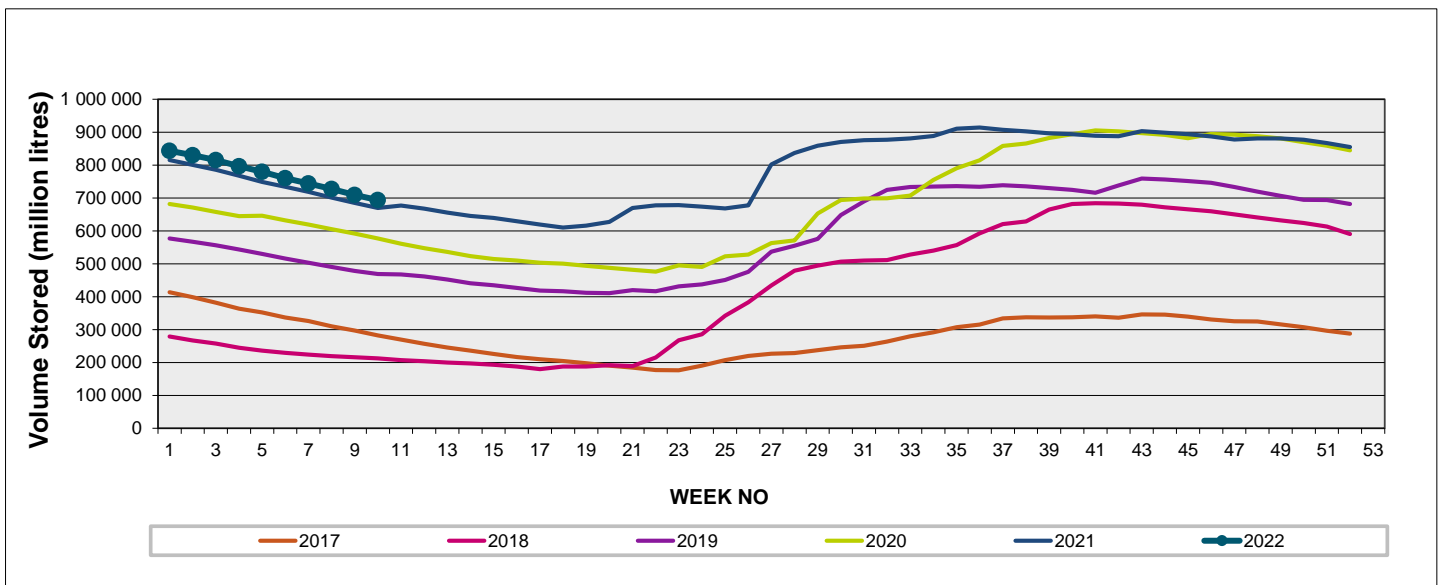
Weekly Change **-1.8%**

MAJOR DAMS (WCWSS)	STORAGE						
	CAPACITY	%	%	%	%	%	%
	MI	07 March 2022	Previous week	2021	2020	2019	2018
BERG RIVER	130 010	78.7	80.4	74.6	74.3	73.7	50.3
STEENBRAS LOWER	33 517	72.8	74.5	68.2	66.4	51.4	38.3
STEENBRAS UPPER	31 767	92.7	93.1	51.0	97.9	70.0	92.6
THEEWATERSKLOOF	480 188	79.5	81.0	78.9	57.7	40.8	10.9
VOËLVLEI	164 095	70.9	73.4	68.8	61.6	65.0	15.5
WEMMERSHOEK	58 644	67.2	69.3	74.7	61.6	60.7	44.1
TOTAL STORED	898 221	693 566	709 398	671 607	564 166	473 390	211 175
% STORAGE		77.2%	79.0%	74.8%	62.8%	52.7%	23.5%

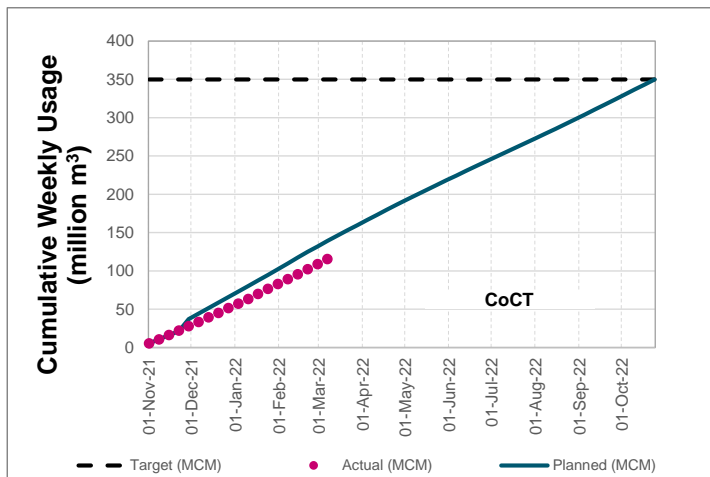
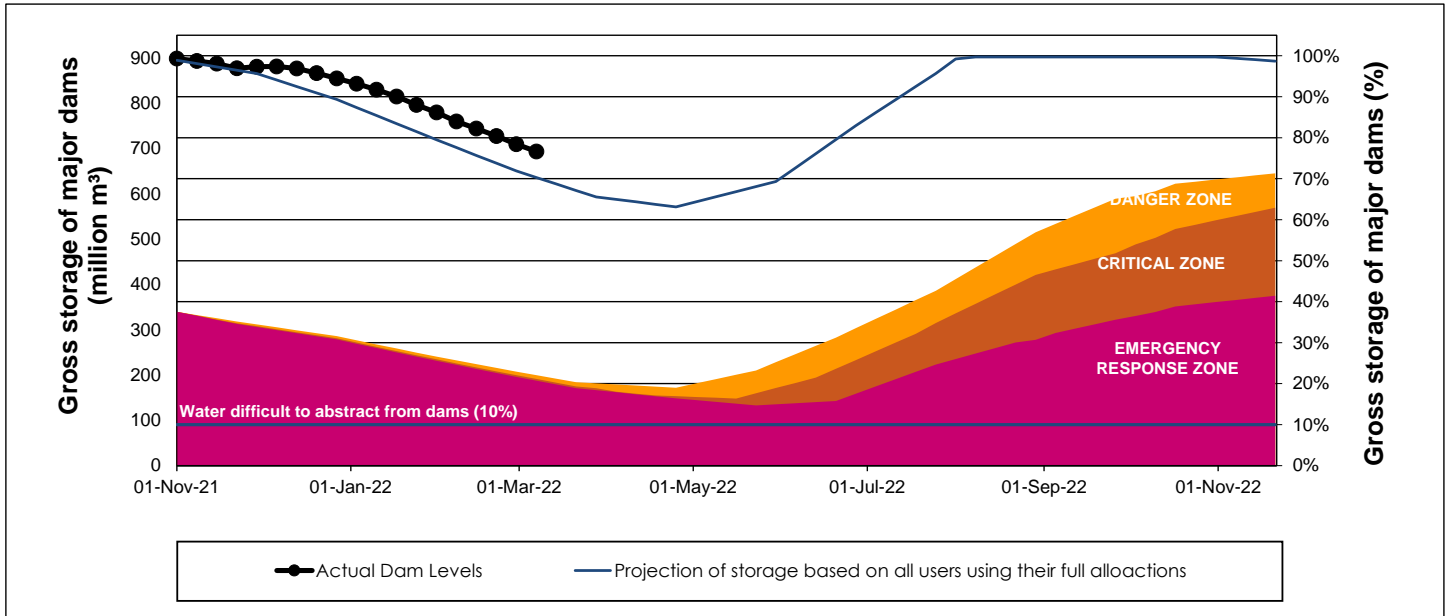
WCWSS Storage Record (2008 - Present)



WCWSS Comparative Storage Graph



WCWSS Dam Storage and Water Use Tracking



Water Stored in Minor Dams

Overall Percentage Full **54.0**

Weekly Change **-2.38**

MINOR DAMS	STORAGE						
	CAPACITY	%	%	%	%	%	%
	MI	07 March 2022	Previous week	2021	2020	2019	2018
ALEXANDRA (Table Mountain)	126	60.9	62.9	46.5	34.3	50.5	34.8
DE VILLIERS (Table Mountain)	243	65.0	65.1	63.7	96.2	42.6	67.9
HELY-HUTCHINSON (Table Mount)	925	20.5	30.1	20.0	0.0	26.2	95.3
KLEINPLAATS (Simon's Town)	1 368	63.8	65.2	59.8	45.5	54.8	43.6
LAND-EN-ZEEZICHT (Helderberg)	451	82.8	84.5	73.9	66.3	90.5	91.9
LEWIS GAY (Simon's Town)	182	37.9	46.8	74.6	1.2	0.0	89.1
VICTORIA (Table Mountain)	128	53.4	53.4	0.0	78.9	0.0	81.3
WOODHEAD (Table Mountain)	954	60.8	57.8	69.3	88.4	69.0	72.4
Total Stored	4 377	2363.6	2467.6	2316.9	2132.5	2213.3	3039.9
Percentages stored		54.0	56.4	52.9	48.7	50.6	69.5

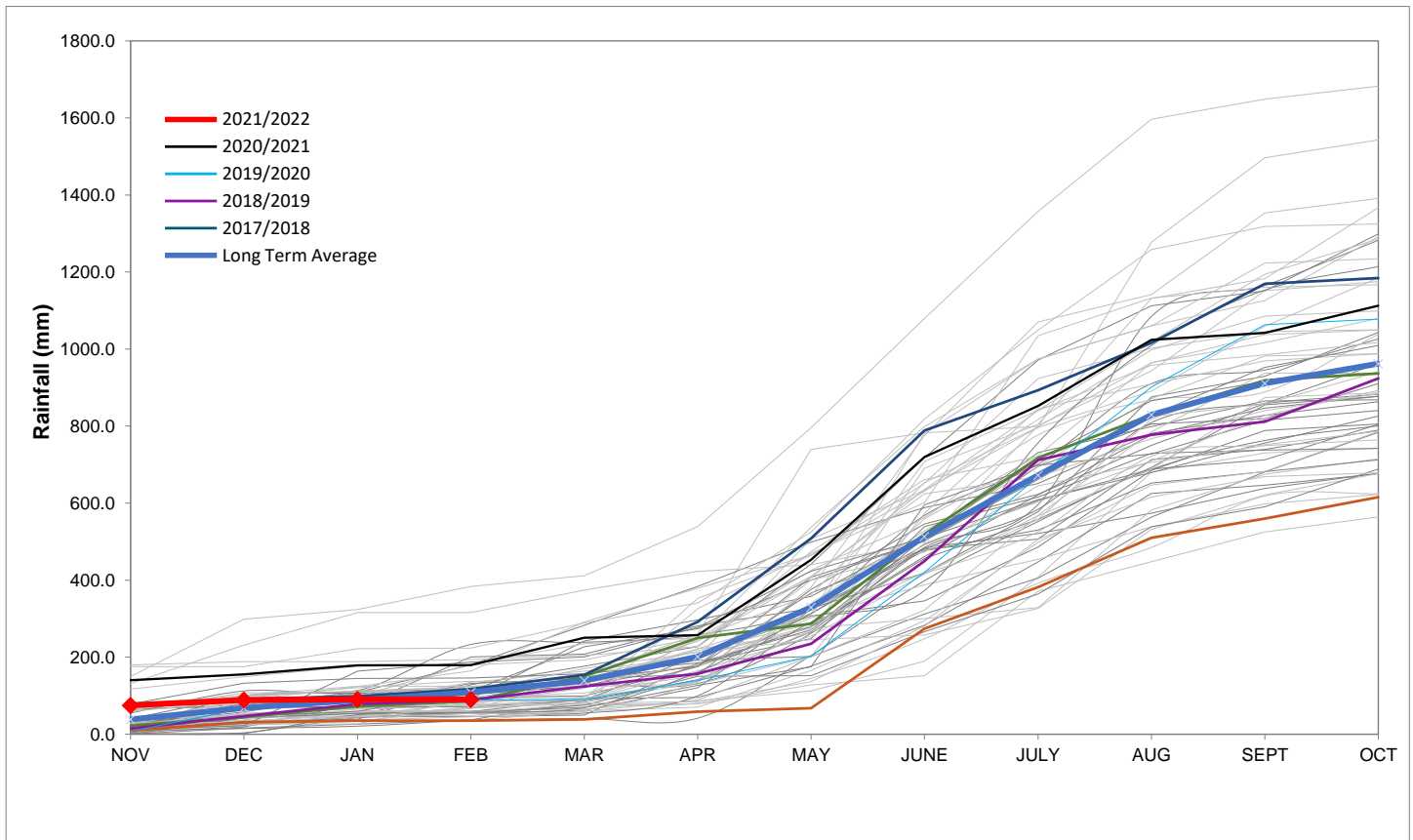
Rainfall Recorded

RAINFALL (mm)	01-Mar	02-Mar	03-Mar	04-Mar	05-Mar	06-Mar	07-Mar	Mar	
								Total*	LT Average
Blackheath Upper	0.0	0.1	0.0	0.0	0.0	0.0		0.1	18.5
Brooklands	1.0	10.0	0.0	0.0	0.0	0.0		11.0	36.3
Newlands	2.0	18.0	0.0	0.0	0.0	0.0		20.0	46.0
Steenbras	0.0	8.0	0.3	0.0	0.0	0.0		8.3	39.0
Table Mountain (Woodhead)	7.5	0.0	0.0	0.0	0.0			7.5	58.7
Theewaterskloof	0.0	0.0	0.0	0.0	0.0	0.0		0.0	26.9
Tygerberg	0.0	0.8	0.0	0.0	0.0	0.0		0.8	15.0
Voëlvllei	0.0	0.0	0.0	0.0	0.0	0.0		0.0	12.9
Wemmershoek	0.0	6.5	0.0	0.0	0.0	0.0		6.5	29.3
Wynberg	8.0	7.0	0.0	0.0	0.0	0.0		15.0	26.2

Notes: *Total/cummulative rainfall for month indicated above
LT: Long Term

Accumulated Monthly Rainfall at Wemmershoek

Note: Wemmershoek station used due to long record and mountainous location



Drinking Water Quality

SAMPLE PASS RATE

Month	Water Quality Compliance (%)	Target (%)
Nov-20	99.17	98
Dec-20	99.14	98
Jan-21	99.16	98
Feb-21	99.12	98
Mar-21	99.08	98
Apr-21	99.07	98
May-21	98.98	98
Jun-21	99.11	98
Jul-21	99.10	98
Aug-21	99.12	98
Sep-21	99.09	98
Oct-21	99.11	98
Nov-21	99.11	98
Dec-21	99.09	98
Jan-22	99.04	98

Notes:

This table shows CCT drinking water quality compliance according to the South African National Standard 241:2015. Compliance, measured against all prescribed chemical and microbiological components, consistently exceeds the very high CCT target of 98%. (Overall compliance percentages of continuous sampling and analysis are released on a monthly basis.