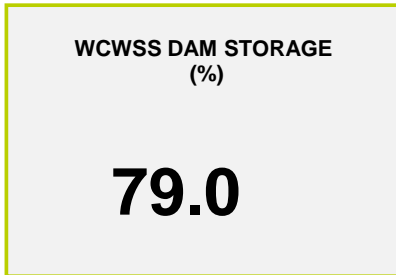
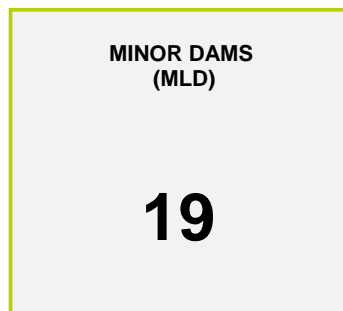
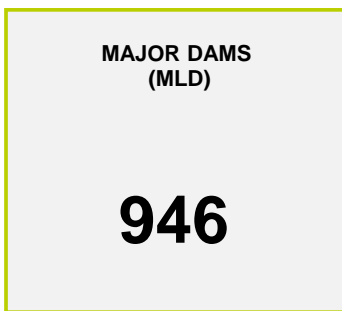




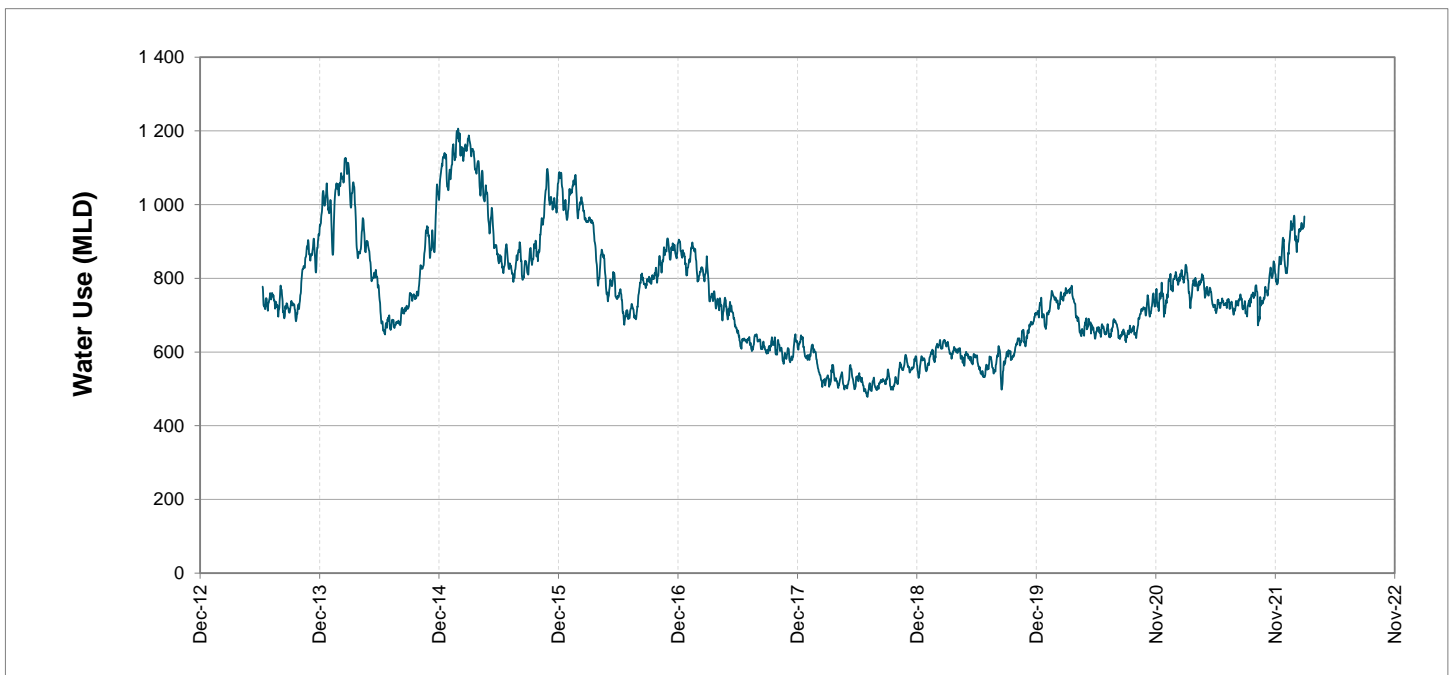
Headline Statistics



Water Production from Different Sources



Overall Water Usage Trend (2010 - Present)



WCWSS means Western Cape Water Supply System

MLD means million litres per day

More information on Water Saving and Restrictions is available on the City of Cape Town's 'ThinkWater' website

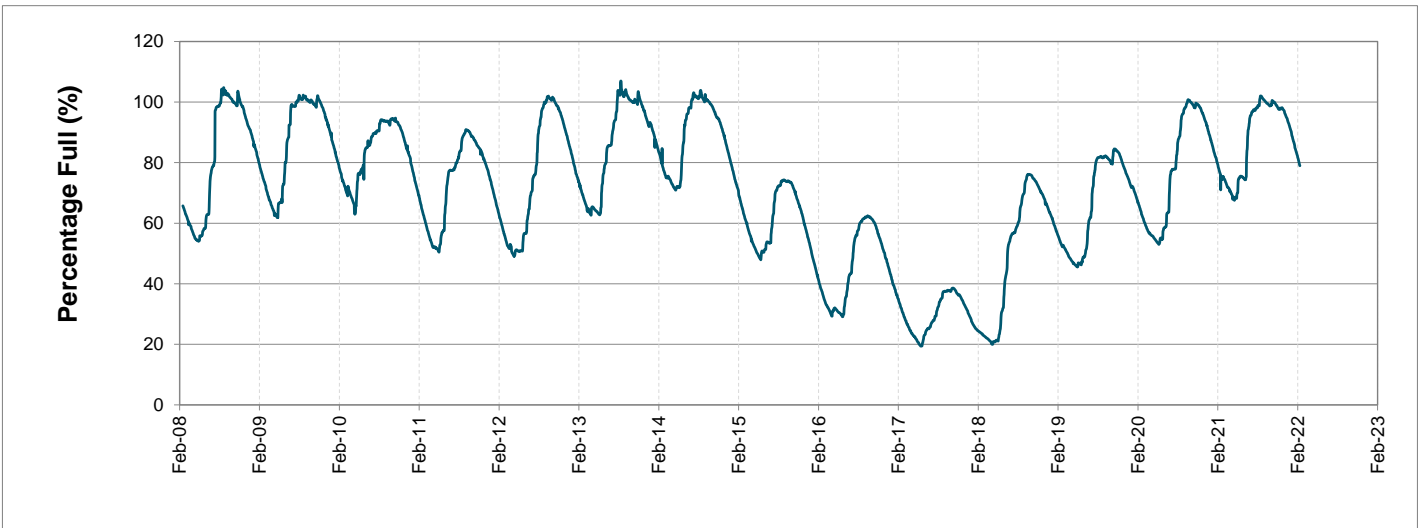
Water Stored in Major Dams (WCWSS)

Overall Percentage Full **79.0%**

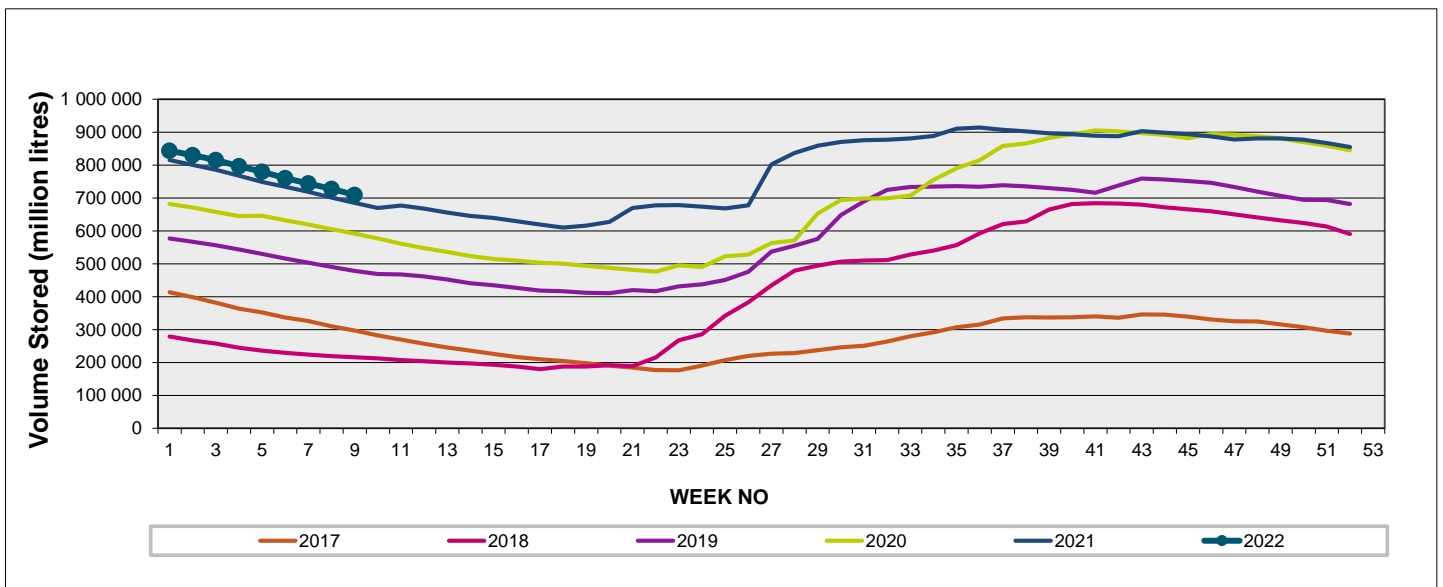
Weekly Change **-2.0%**

MAJOR DAMS (WCWSS)	STORAGE						
	CAPACITY	%	%	%	%	%	%
	MI	28 February 2022	Previous week	2021	2020	2019	2018
BERG RIVER	130 010	80.4	82.2	76.4	77.1	75.2	51.9
STEENBRAS LOWER	33 517	74.5	76.4	70.3	69.6	52.8	36.6
STEENBRAS UPPER	31 767	93.1	93.4	52.1	98.4	69.9	92.6
THEEWATERSKLOOF	480 188	81.0	83.1	80.3	59.6	41.9	11.0
VOËLVLEI	164 095	73.4	75.7	71.4	63.8	67.1	15.9
WEMMERSHOEK	58 644	69.3	71.5	76.8	64.1	62.4	45.5
TOTAL STORED	898 221	709 398	727 460	687 128	583 248	485 715	214 982
% STORAGE		79.0%	81.0%	76.5%	64.9%	54.1%	23.9%

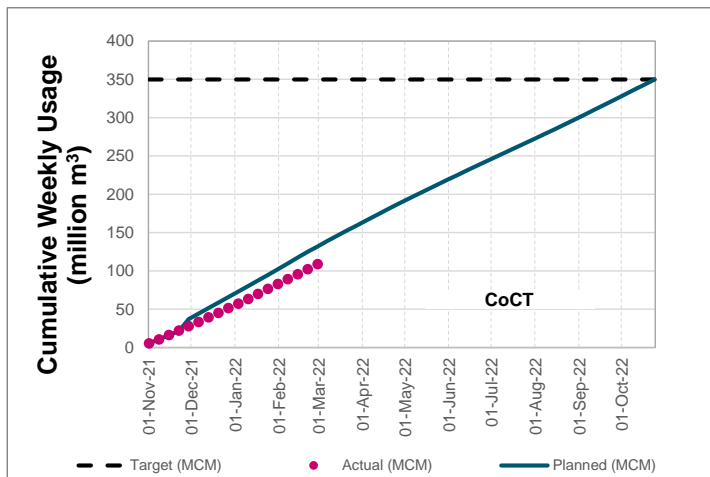
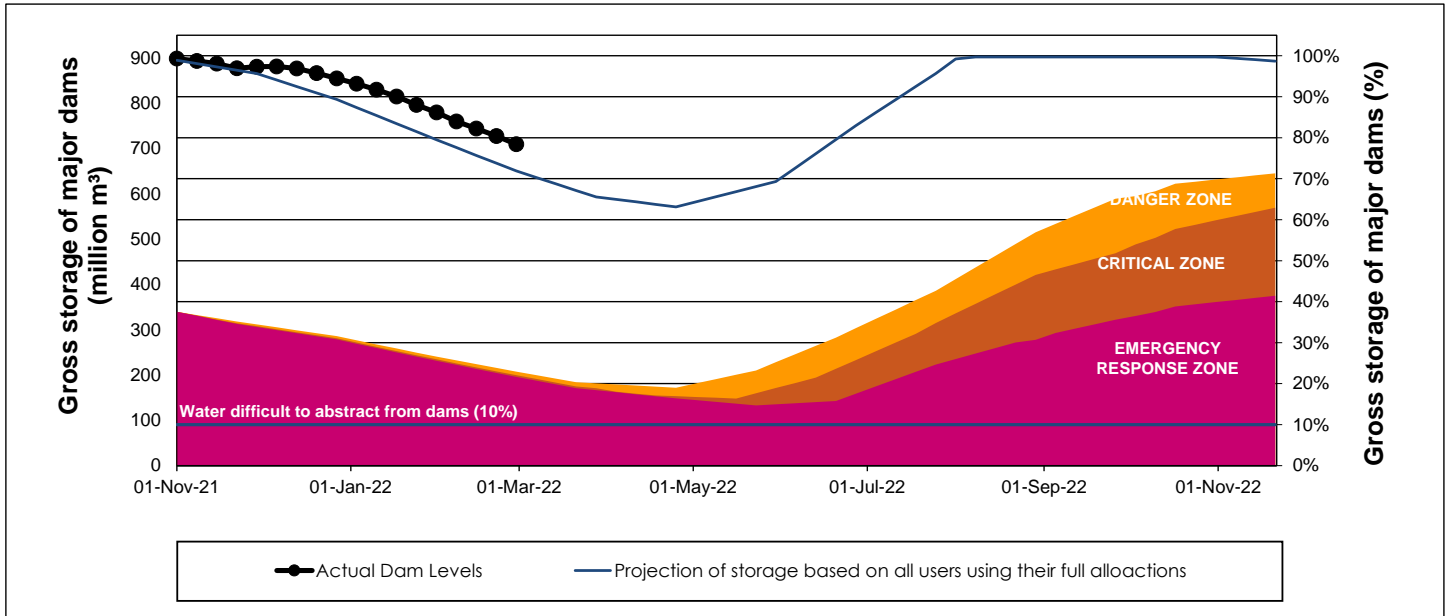
WCWSS Storage Record (2008 - Present)



WCWSS Comparative Storage Graph



WCWSS Dam Storage and Water Use Tracking



Water Stored in Minor Dams

Overall Percentage Full **56.4**

Weekly Change **-2.30**

MINOR DAMS	STORAGE						
	CAPACITY	%	%	%	%	%	%
	MI	28 February 2022	Previous week	2021	2020	2019	2018
ALEXANDRA (Table Mountain)	126	62.9	64.5	47.8	35.3	50.8	35.7
DE VILLIERS (Table Mountain)	243	65.1	64.8	65.7	96.7	37.3	73.8
HELY-HUTCHINSON (Table Mount)	925	30.1	37.8	25.0	0.0	49.5	96.1
KLEINPLAATS (Simon's Town)	1 368	65.2	66.8	63.0	48.7	58.0	45.3
LAND-EN-ZEEZICHT (Helderberg)	451	84.5	85.4	75.9	70.0	90.7	92.7
LEWIS GAY (Simon's Town)	182	46.8	56.5	67.0	1.2	0.0	96.5
VICTORIA (Table Mountain)	128	53.4	54.1	0.0	81.0	24.9	83.7
WOODHEAD (Table Mountain)	954	57.8	56.3	63.9	94.3	61.2	81.2
Total Stored	4 377	2467.6	2568.3	2356.6	2253.4	2415.5	3187.3
Percentages stored		56.4	58.7	53.8	51.5	55.2	72.8

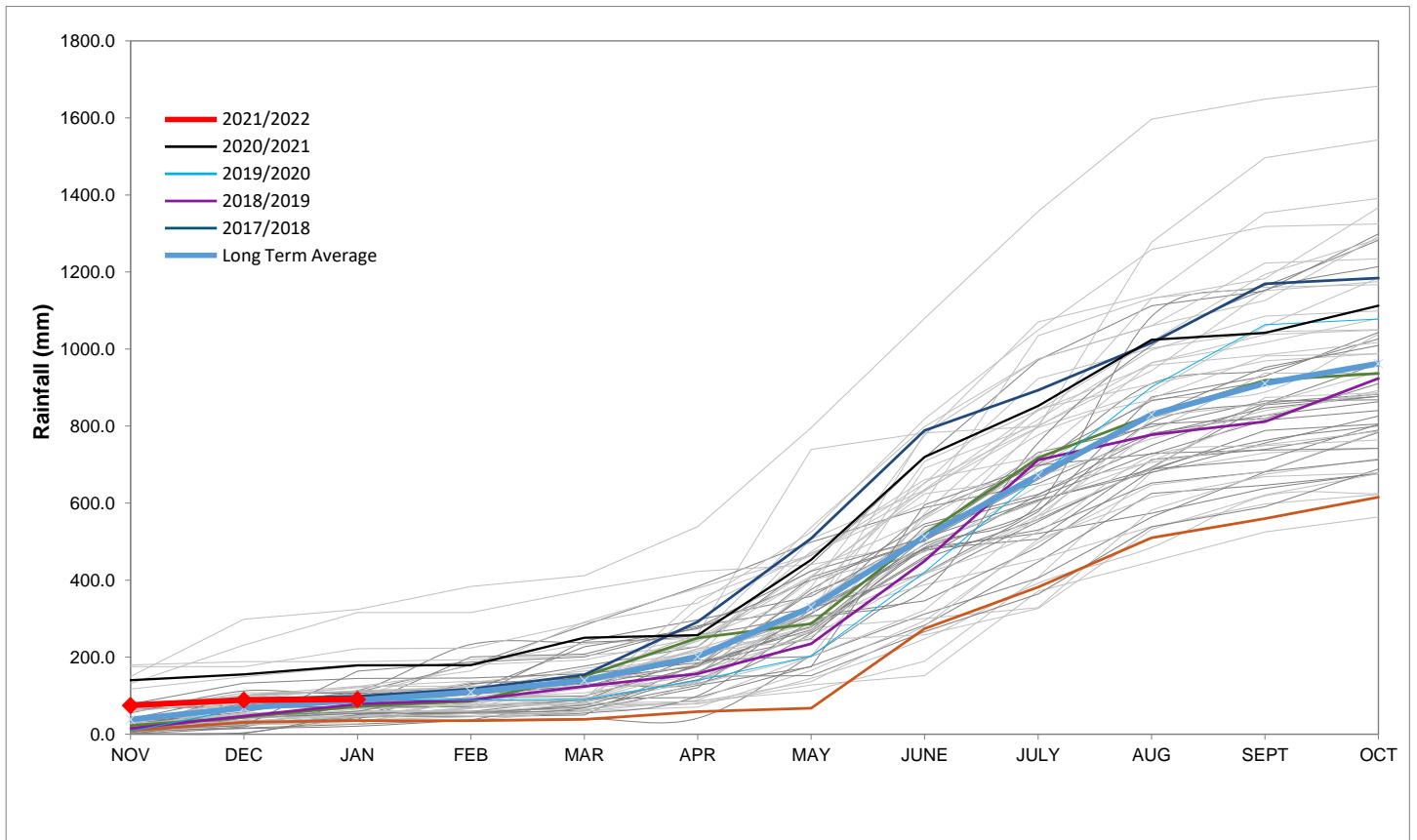
Rainfall Recorded

RAINFALL (mm)	22-Feb	23-Feb	24-Feb	25-Feb	26-Feb	27-Feb	28-Feb	Feb	
								Total*	LT Average
Blackheath Upper	0.0	0.0	0.0	0.0	0.0	0.0	0.0	8.9	15.1
Brooklands	0.0	0.0	0.0	0.0	0.0	0.0	0.0	12.0	19.2
Newlands	0.0	0.0	0.0	0.0	0.0	0.0	0.0	23.5	29.1
Steenbras	0.0	0.0	0.0	0.0	0.0	0.0	0.0	8.9	27.0
Table Mountain (Woodhead)	0.0	0.0	0.0	0.0	0.0	0.0	0.0	70.0	40.1
Theewaterskloof	0.0	0.0	0.0	0.0	0.0	0.0	0.0	0.0	22.6
Tygerberg	0.0	0.0	0.0	0.0	0.0	0.0	0.0	2.0	7.1
Voëlvei	0.0	0.0	0.0	0.0	0.0	0.0	0.0	0.6	9.3
Wemmershoek	0.0	0.0	0.0	0.0	0.0	0.0	0.0	3.6	15.7
Wynberg	0.0	0.0	0.0	0.0	0.0	0.0	0.0	1.0	11.7

Notes: *Total/cumulative rainfall for month indicated above
LT: Long Term

Accumulated Monthly Rainfall at Wemmershoek

Note: Wemmershoek station used due to long record and mountainous location



Drinking Water Quality

SAMPLE PASS RATE

Month	Water Quality Compliance (%)	Target (%)
Nov-20	99.17	98
Dec-20	99.14	98
Jan-21	99.16	98
Feb-21	99.12	98
Mar-21	99.08	98
Apr-21	99.07	98
May-21	98.98	98
Jun-21	99.11	98
Jul-21	99.10	98
Aug-21	99.12	98
Sep-21	99.09	98
Oct-21	99.11	98
Nov-21	99.11	98
Dec-21	99.09	98
Jan-22	99.04	98

Notes:

This table shows CCT drinking water quality compliance according to the South African National Standard 241:2015. Compliance, measured against all prescribed chemical and microbiological components, consistently exceeds the very high CCT target of 98%. (Overall compliance percentages of continuous sampling and analysis are released on a monthly basis.