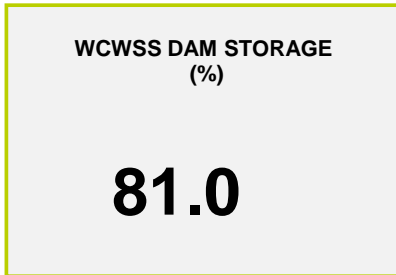
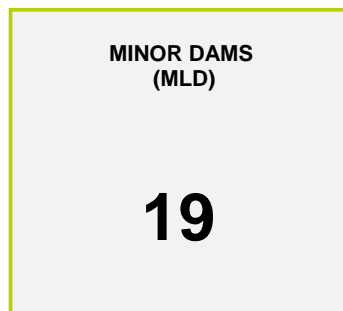
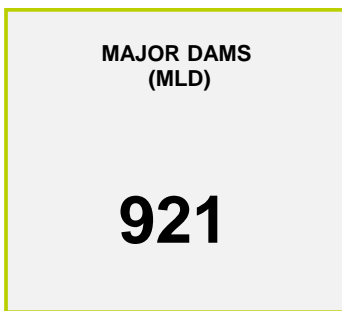




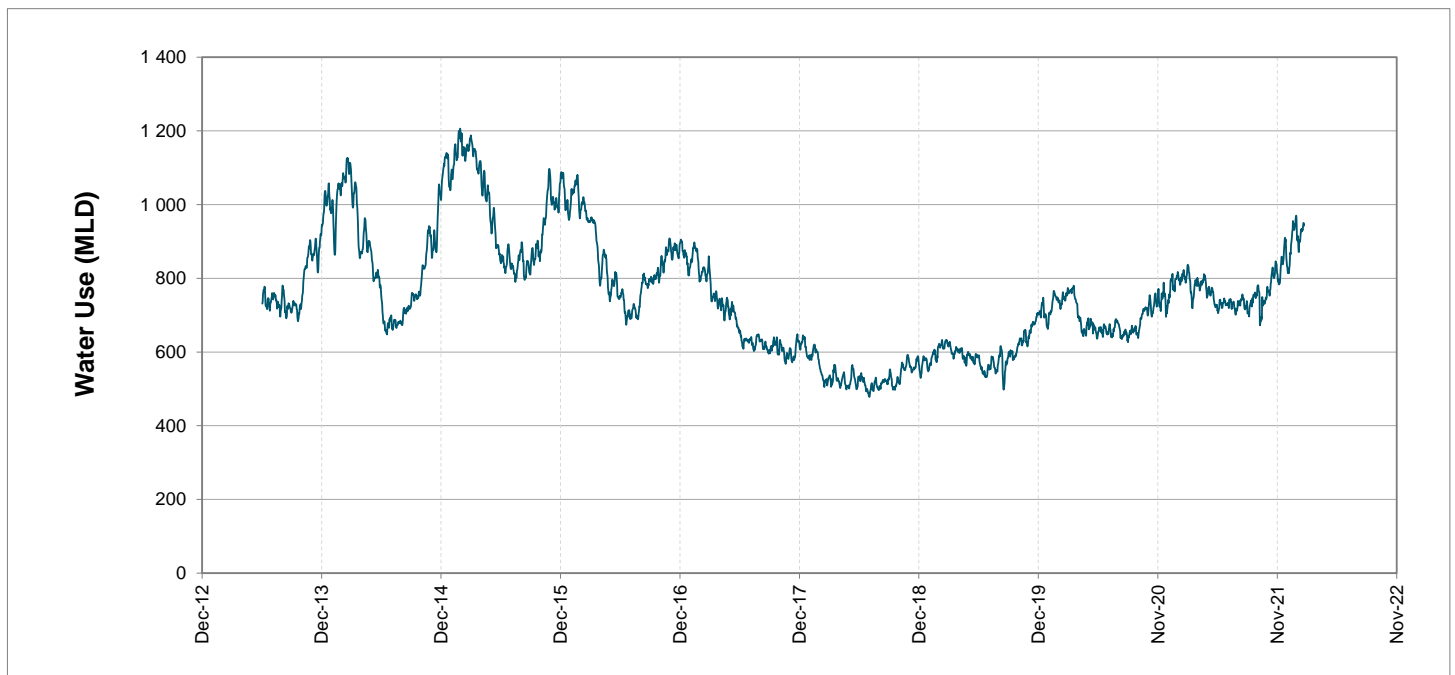
Headline Statistics



Water Production from Different Sources



Overall Water Usage Trend (2010 - Present)



WCWSS means Western Cape Water Supply System

MLD means million litres per day

More information on Water Saving and Restrictions is available on the City of Cape Town's 'ThinkWater' website

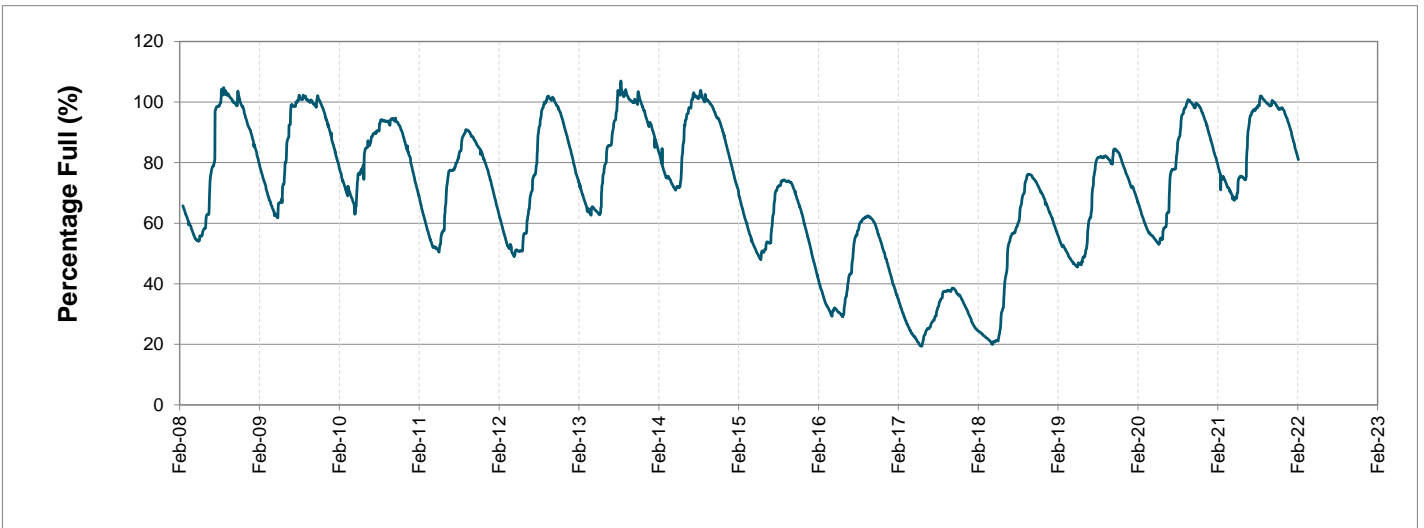
Water Stored in Major Dams (WCWSS)

Overall Percentage Full **81.0%**

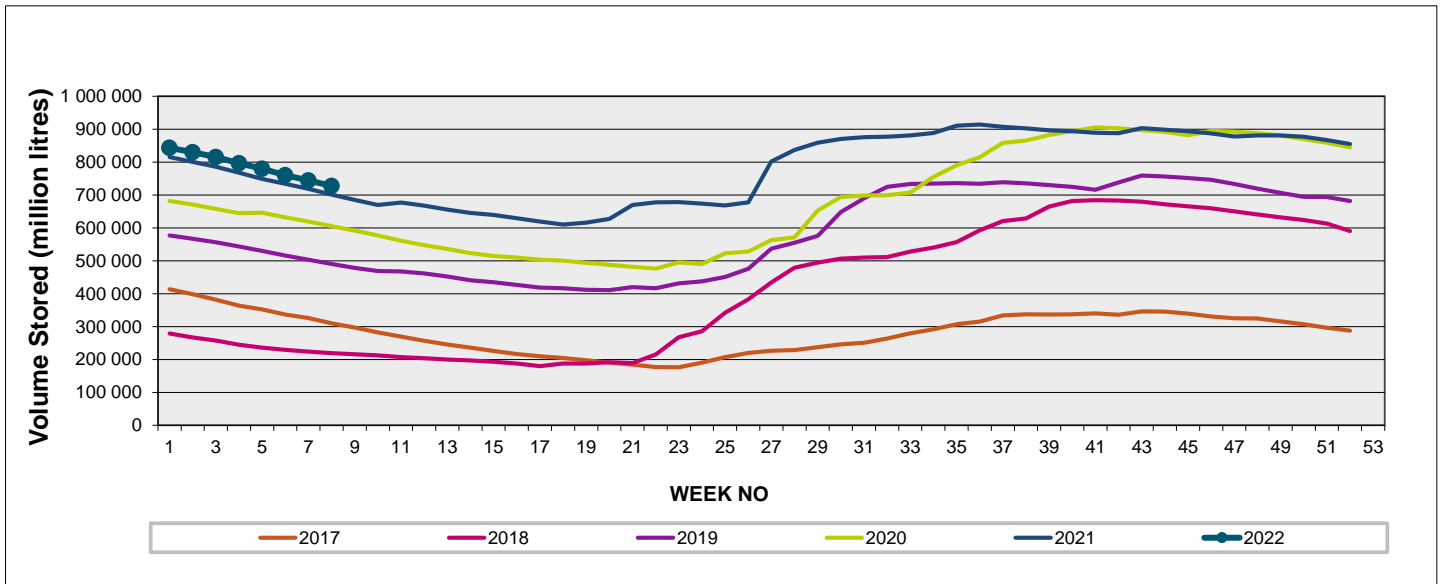
Weekly Change **-1.8%**

MAJOR DAMS (WCWSS)	STORAGE						
	CAPACITY	%	%	%	%	%	%
	MI	21 February 2022	Previous week	2021	2020	2019	2018
BERG RIVER	130 010	82.2	84.2	78.3	79.4	77.0	53.3
STEENBRAS LOWER	33 517	76.4	77.9	73.2	71.0	54.5	38.4
STEENBRAS UPPER	31 767	93.4	93.2	49.7	98.7	70.1	88.1
THEEWATERSKLOOF	480 188	83.1	84.9	82.2	60.7	43.0	11.1
VOËLVLEI	164 095	75.7	77.8	72.9	65.8	69.1	16.4
WEMMERSHOEK	58 644	71.5	73.5	78.8	66.3	64.3	47.2
TOTAL STORED	898 221	727 460	743 938	702 620	596 801	498 328	218 195
% STORAGE		81.0%	82.8%	78.2%	66.4%	55.5%	24.3%

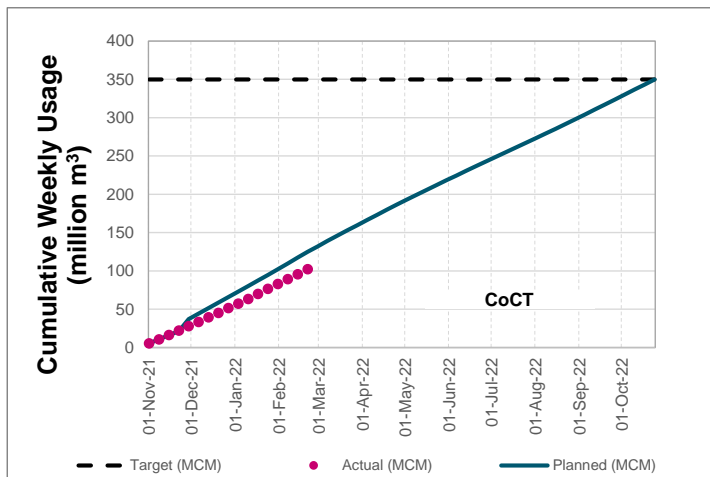
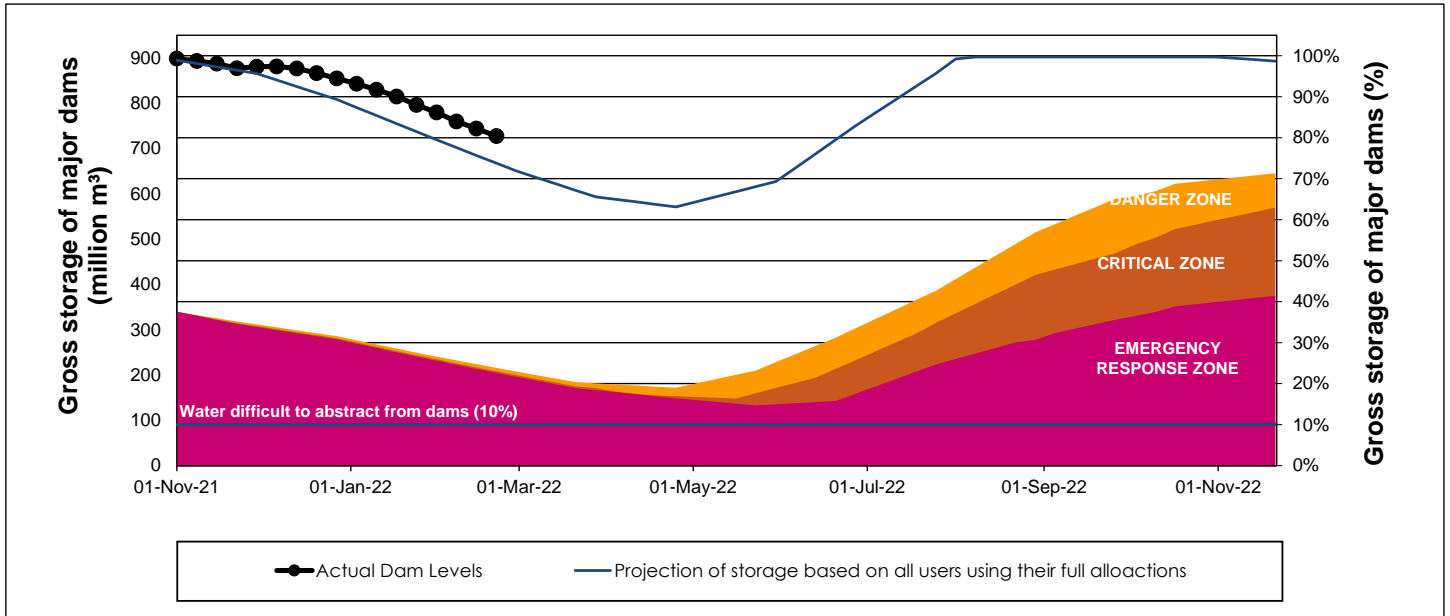
WCWSS Storage Record (2008 - Present)



WCWSS Comparative Storage Graph



WCWSS Dam Storage and Water Use Tracking



Water Stored in Minor Dams

Overall Percentage Full **58.7**

Weekly Change **-1.34**

MINOR DAMS	STORAGE						
	CAPACITY	%	%	%	%	%	%
	MI	21 February 2022	Previous week	2021	2020	2019	2018
ALEXANDRA (Table Mountain)	126	64.5	67.1	64.3	36.3	44.6	36.8
DE VILLIERS (Table Mountain)	243	64.8	64.6	55.5	96.7	40.4	77.1
HELY-HUTCHINSON (Table Mount)	925	37.8	42.8	30.3	12.5	74.1	96.3
KLEINPLAATS (Simon's Town)	1 368	66.8	69.4	66.8	52.2	62.2	46.0
LAND-EN-ZEEZICHT (Helderberg)	451	85.4	87.2	78.1	71.9	91.4	95.0
LEWIS GAY (Simon's Town)	182	56.5	61.8	59.8	3.3	0.0	97.2
VICTORIA (Table Mountain)	128	54.1	55.4	0.0	82.0	39.9	84.4
WOODHEAD (Table Mountain)	954	56.3	51.8	58.3	97.8	49.5	85.9
Total Stored	4 377	2568.3	2627.1	2397.0	2463.0	2608.4	3266.3
Percentages stored		58.7	60.0	54.8	56.3	59.6	74.6

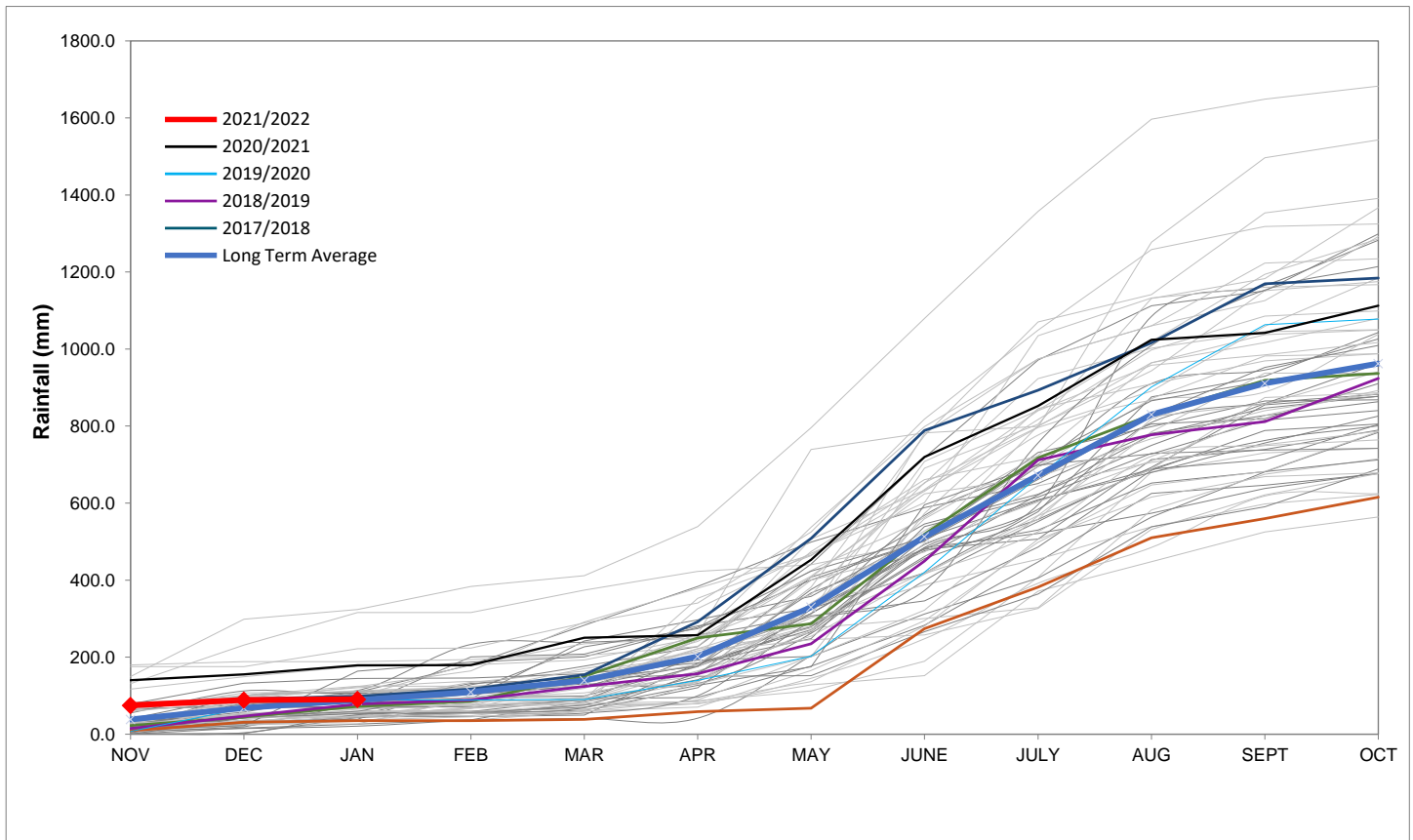
Rainfall Recorded

RAINFALL (mm)	15-Feb	16-Feb	17-Feb	18-Feb	19-Feb	20-Feb	21-Feb	Feb	
								Total*	LT Average
Blackheath Upper	0.0	0.0	0.0	0.0	0.0	0.0		8.9	15.1
Brooklands	0.0	0.0	0.0	0.0	0.0	0.0		12.0	19.2
Newlands	0.0	0.0	0.0	0.0	0.0	0.0		23.5	29.1
Steenbras	0.0	0.0	0.0	0.0	0.0	0.8		8.9	27.0
Table Mountain (Woodhead)	0.0	0.0	0.0	0.0	0.0			70.0	40.1
Theewaterskloof	0.0	0.0	0.0	0.0	0.0	0.0		0.0	22.6
Tygerberg	0.0	0.0	0.0	0.0	0.0	0.0		2.0	7.1
Voëlvllei	0.0	0.0	0.0	0.0	0.0	0.0		0.6	9.3
Wemmershoek	0.0	0.0	0.0	0.0	0.0	0.0		3.6	15.7
Wynberg	0.0	0.0	0.0	0.0	0.0	0.0		1.0	11.7

Notes: *Total/cummulative rainfall for month indicated above
LT: Long Term

Accumulated Monthly Rainfall at Wemmershoek

Note: Wemmershoek station used due to long record and mountainous location



Drinking Water Quality

SAMPLE PASS RATE

Month	Water Quality Compliance (%)	Target (%)
Nov-20	99.17	98
Dec-20	99.14	98
Jan-21	99.16	98
Feb-21	99.12	98
Mar-21	99.08	98
Apr-21	99.07	98
May-21	98.98	98
Jun-21	99.11	98
Jul-21	99.10	98
Aug-21	99.12	98
Sep-21	99.09	98
Oct-21	99.11	98
Nov-21	99.11	98
Dec-21	99.09	98
Jan-22	99.04	98

Notes:

This table shows CCT drinking water quality compliance according to the South African National Standard 241:2015. Compliance, measured against all prescribed chemical and microbiological components, consistently exceeds the very high CCT target of 98%. (Overall compliance percentages of continuous sampling and analysis are released on a monthly basis.