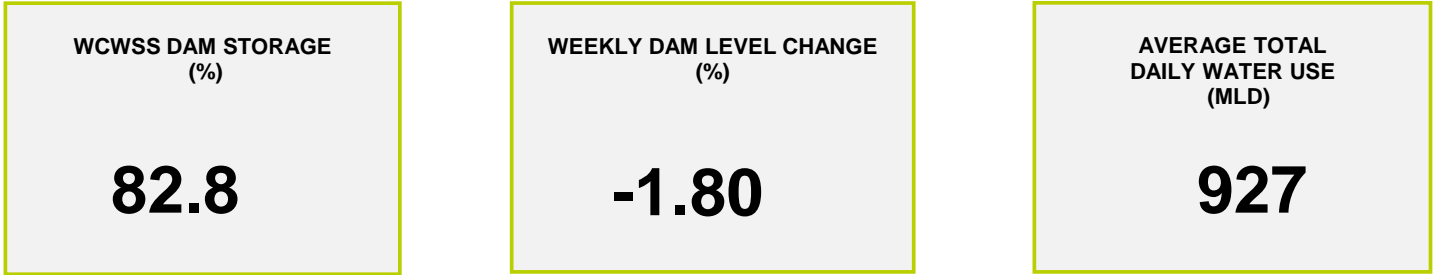
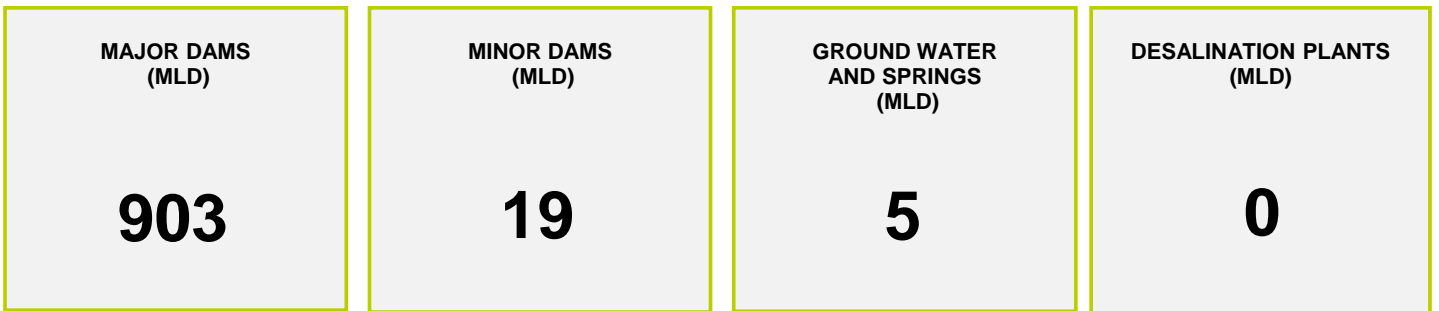




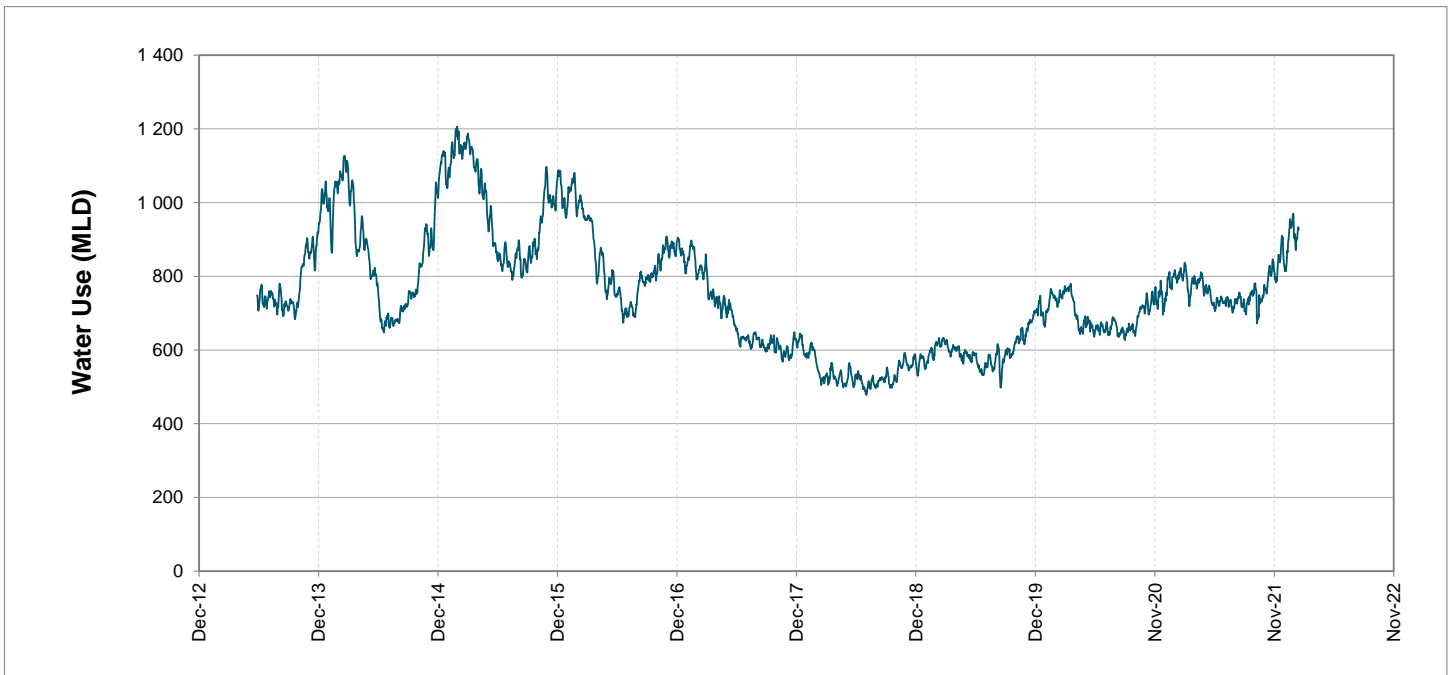
Headline Statistics



Water Production from Different Sources



Overall Water Usage Trend (2010 - Present)



WCSS means Western Cape Water Supply System

MLD means million litres per day

More information on Water Saving and Restrictions is available on the City of Cape Town's 'ThinkWater' website

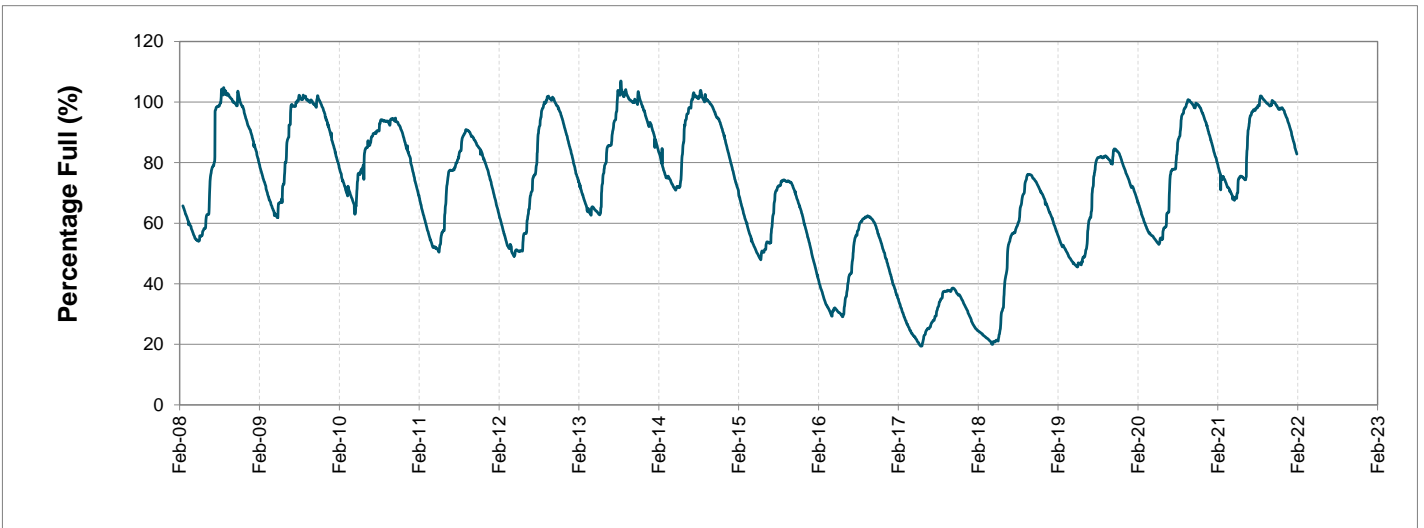
Water Stored in Major Dams (WCWSS)

Overall Percentage Full **82.8%**

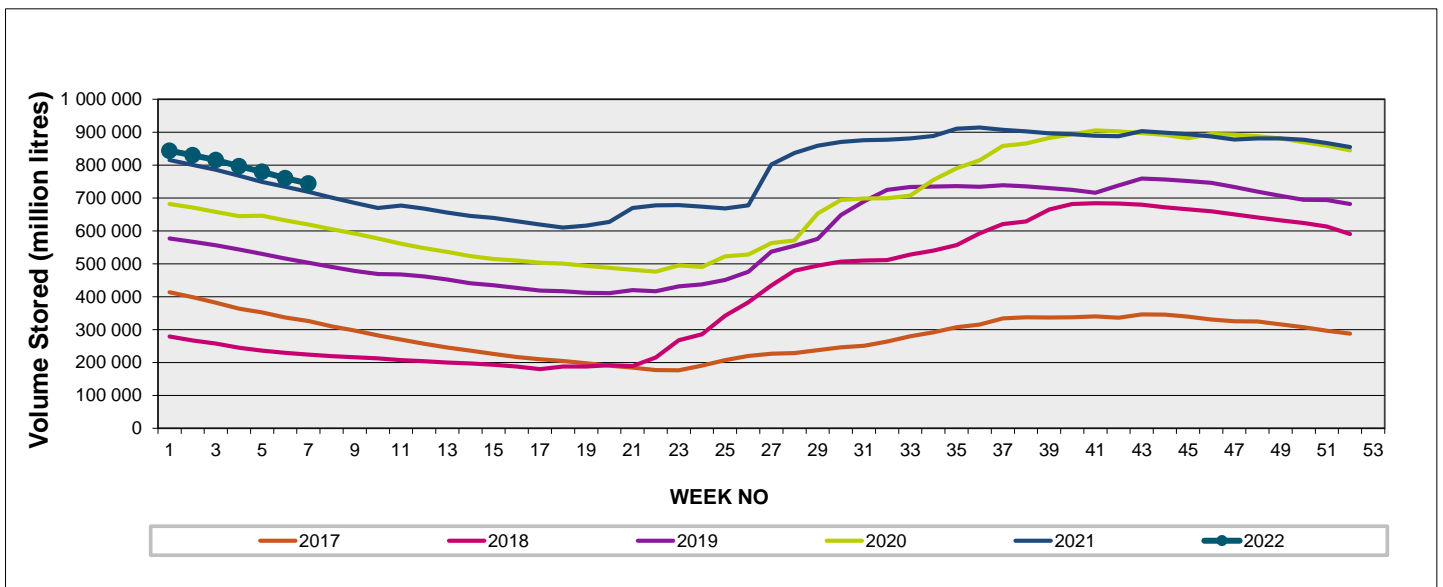
Weekly Change **-1.8%**

MAJOR DAMS (WCWSS)	STORAGE						
	CAPACITY	%	%	%	%	%	%
	MI	14 February 2022	Previous week	2021	2020	2019	2018
BERG RIVER	130 010	84.2	86.2	80.2	81.4	78.6	53.4
STEENBRAS LOWER	33 517	77.9	80.1	74.7	73.6	56.1	40.2
STEENBRAS UPPER	31 767	93.2	91.9	53.1	99.0	70.5	81.6
THEEWATERSKLOOF	480 188	84.9	86.9	84.3	61.8	44.1	11.7
VOËLVLEI	164 095	77.8	79.4	74.9	68.2	70.9	17.2
WEMMERSHOEK	58 644	73.5	75.4	80.7	68.1	66.3	48.6
TOTAL STORED	898 221	743 938	759 818	721 137	610 665	510 393	221 916
% STORAGE		82.8%	84.6%	80.3%	68.0%	56.8%	24.7%

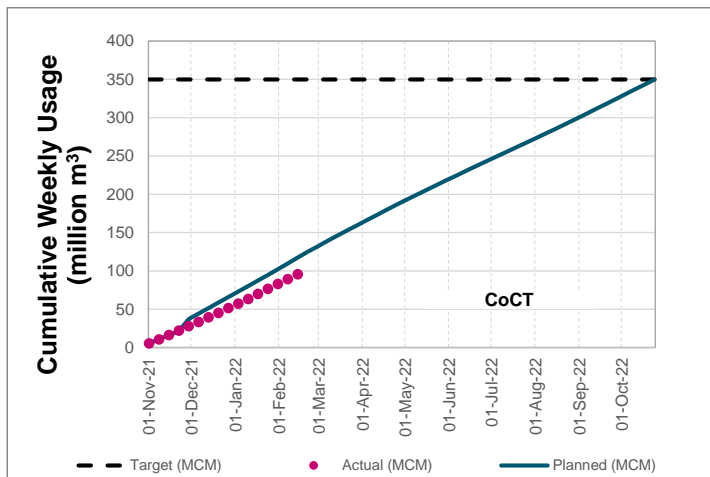
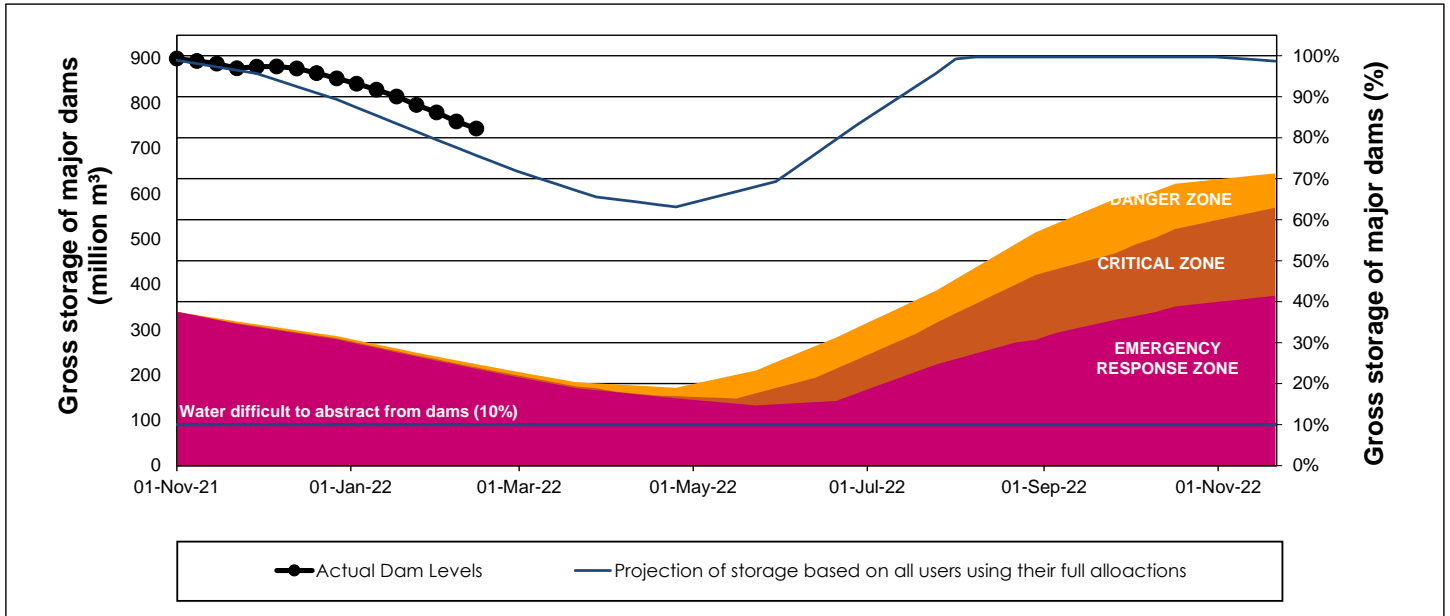
WCWSS Storage Record (2008 - Present)



WCWSS Comparative Storage Graph



WCWSS Dam Storage and Water Use Tracking



Water Stored in Minor Dams

Overall Percentage Full **60.0**

Weekly Change **-1.80**

MINOR DAMS	STORAGE						
	CAPACITY	%	%	%	%	%	%
	MI	14 February 2022	Previous week	2021	2020	2019	2018
ALEXANDRA (Table Mountain)	126	67.1	70.7	97.6	37.2	30.8	37.5
DE VILLIERS (Table Mountain)	243	64.6	64.1	51.7	96.9	48.6	77.6
HELY-HUTCHINSON (Table Mount)	925	42.8	43.0	31.7	27.4	92.9	96.4
KLEINPLAATS (Simon's Town)	1 368	69.4	71.3	70.2	54.6	66.7	46.8
LAND-EN-ZEEZICHT (Helderberg)	451	87.2	88.8	80.8	73.8	91.0	96.0
LEWIS GAY (Simon's Town)	182	61.8	71.5	55.7	6.1	0.0	95.4
VICTORIA (Table Mountain)	128	55.4	56.7	3.1	82.3	55.2	85.1
WOODHEAD (Table Mountain)	954	51.8	54.2	65.4	86.4	43.0	86.0
Total Stored	4 377	2627.1	2705.7	2567.1	2538.3	2797.4	3283.5
Percentages stored		60.0	61.8	58.6	58.0	63.9	75.0

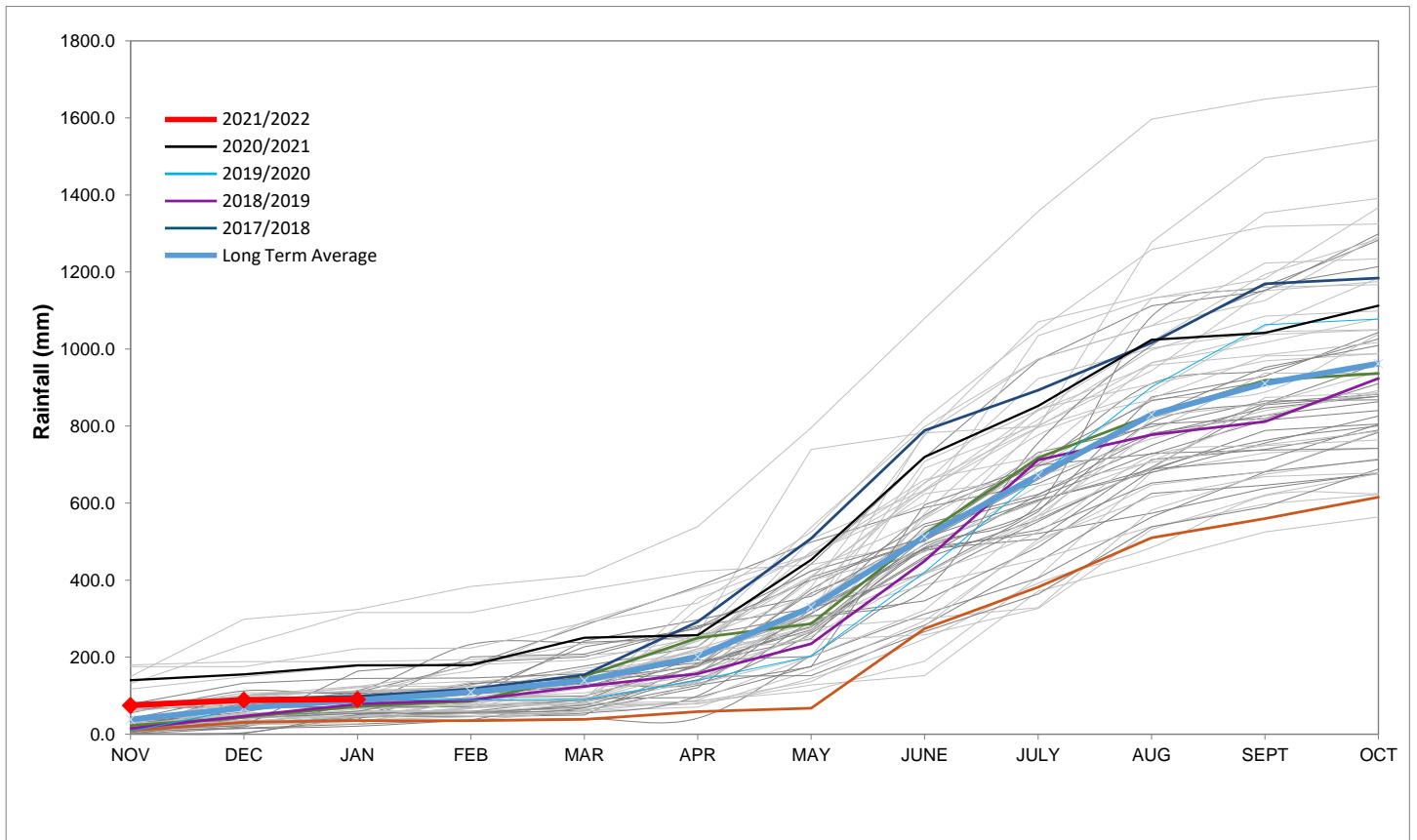
Rainfall Recorded

RAINFALL (mm)	08-Feb	09-Feb	10-Feb	11-Feb	12-Feb	13-Feb	14-Feb	Feb	
								Total*	LT Average
Blackheath Upper	0.0	3.0	0.9	0.0	0.0	0.0		8.9	15.1
Brooklands	0.0	2.0	0.0	0.0	0.0	0.0		12.0	19.2
Newlands	0.0	0.0	0.0	0.0	0.0	0.0		23.5	29.1
Steenbras	0.0	0.0	0.0	0.0	0.0	0.0		8.1	27.0
Table Mountain (Woodhead)	0.0	0.0	0.0	0.0	0.0	0.0		70.0	40.1
Theewaterskloof	0.0	0.0	0.0	0.0	0.0	0.0		0.0	22.6
Tygerberg	0.0	1.0	1.0	0.0	0.0	0.0		2.0	7.1
Voëlvlei	0.0	0.0	0.0	0.0	0.0	0.0		0.6	9.3
Wemmershoek	0.0	0.0	0.0	0.0	0.0	0.0		3.6	15.7
Wynberg	0.0	0.0	0.0	0.0	0.0	0.0		1.0	11.7

Notes: *Total/cummulative rainfall for month indicated above
LT: Long Term

Accumulated Monthly Rainfall at Wemmershoek

Note: Wemmershoek station used due to long record and mountainous location



Drinking Water Quality

SAMPLE PASS RATE

Month	Water Quality Compliance (%)	Target (%)
Nov-20	99.17	98
Dec-20	99.14	98
Jan-21	99.16	98
Feb-21	99.12	98
Mar-21	99.08	98
Apr-21	99.07	98
May-21	98.98	98
Jun-21	99.11	98
Jul-21	99.10	98
Aug-21	99.12	98
Sep-21	99.09	98
Oct-21	99.11	98
Nov-21	99.11	98
Dec-21	99.09	98
Jan-22	99.04	98

Notes:

This table shows CCT drinking water quality compliance according to the South African National Standard 241:2015. Compliance, measured against all prescribed chemical and microbiological components, consistently exceeds the very high CCT target of 98%. (Overall compliance percentages of continuous sampling and analysis are released on a monthly basis.