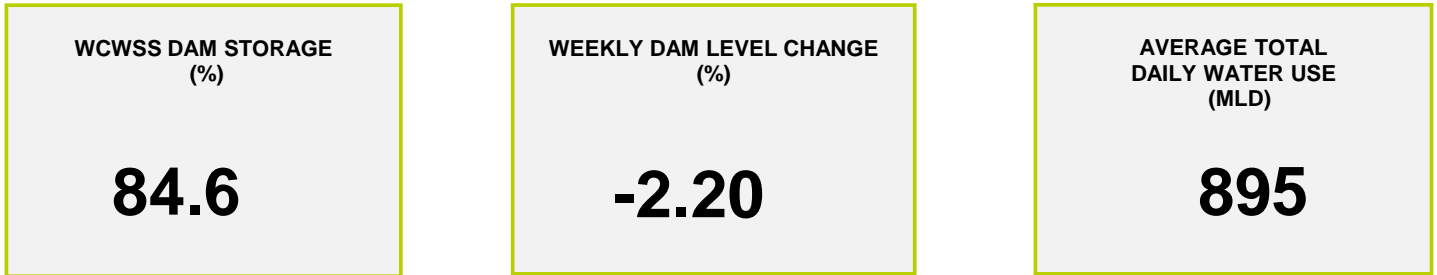
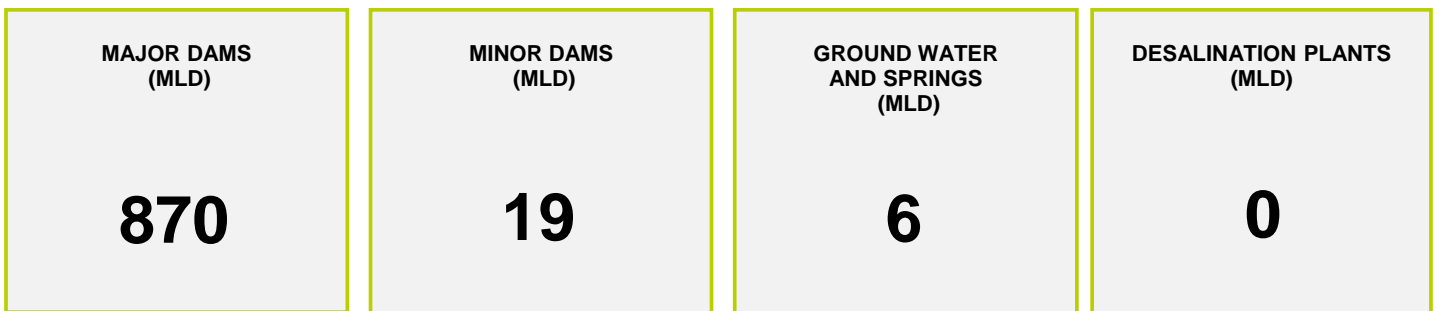




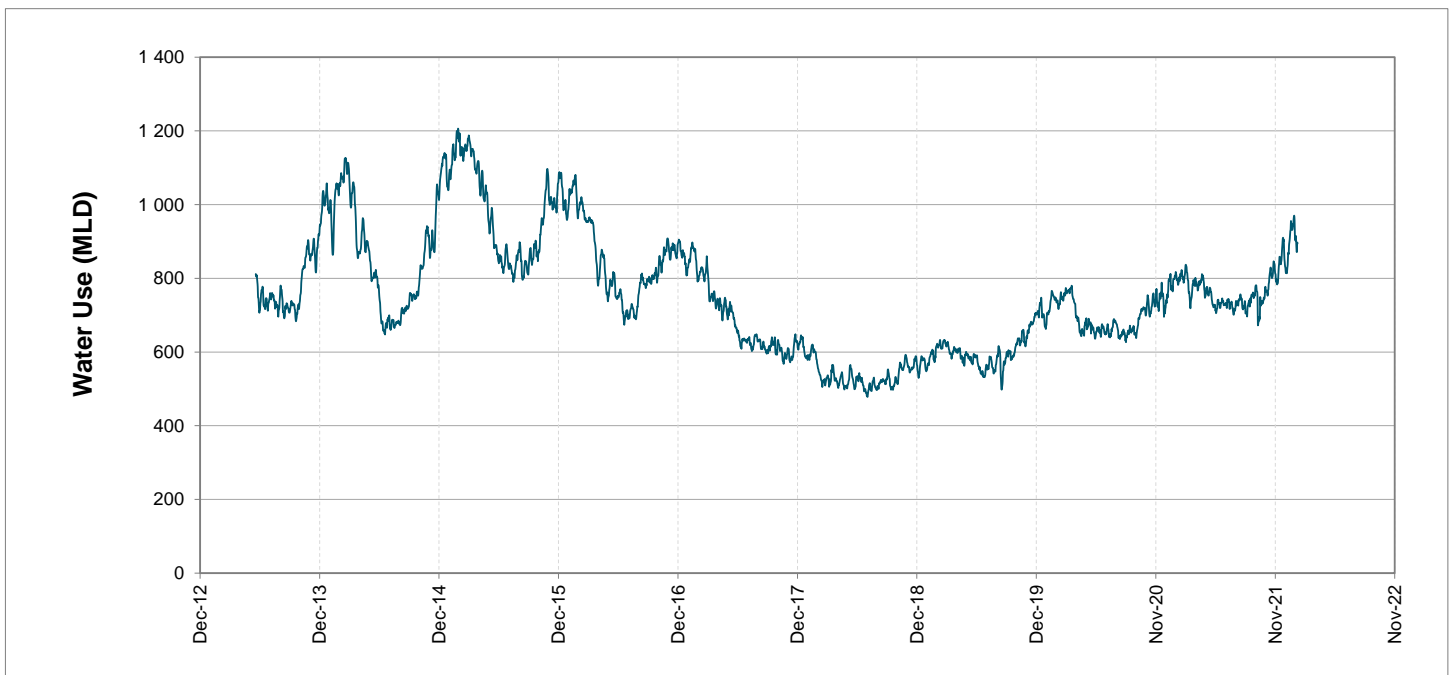
Headline Statistics



Water Production from Different Sources



Overall Water Usage Trend (2010 - Present)



WCWSS means Western Cape Water Supply System

MLD means million litres per day

More information on Water Saving and Restrictions is available on the City of Cape Town's 'ThinkWater' website

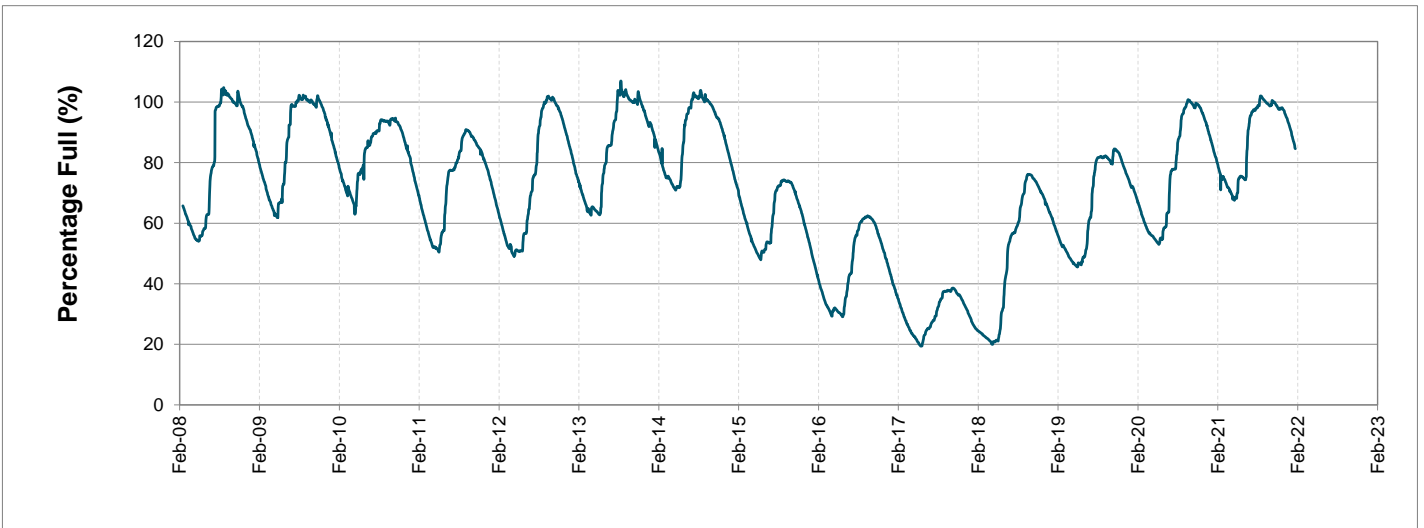
Water Stored in Major Dams (WCWSS)

Overall Percentage Full **84.6%**

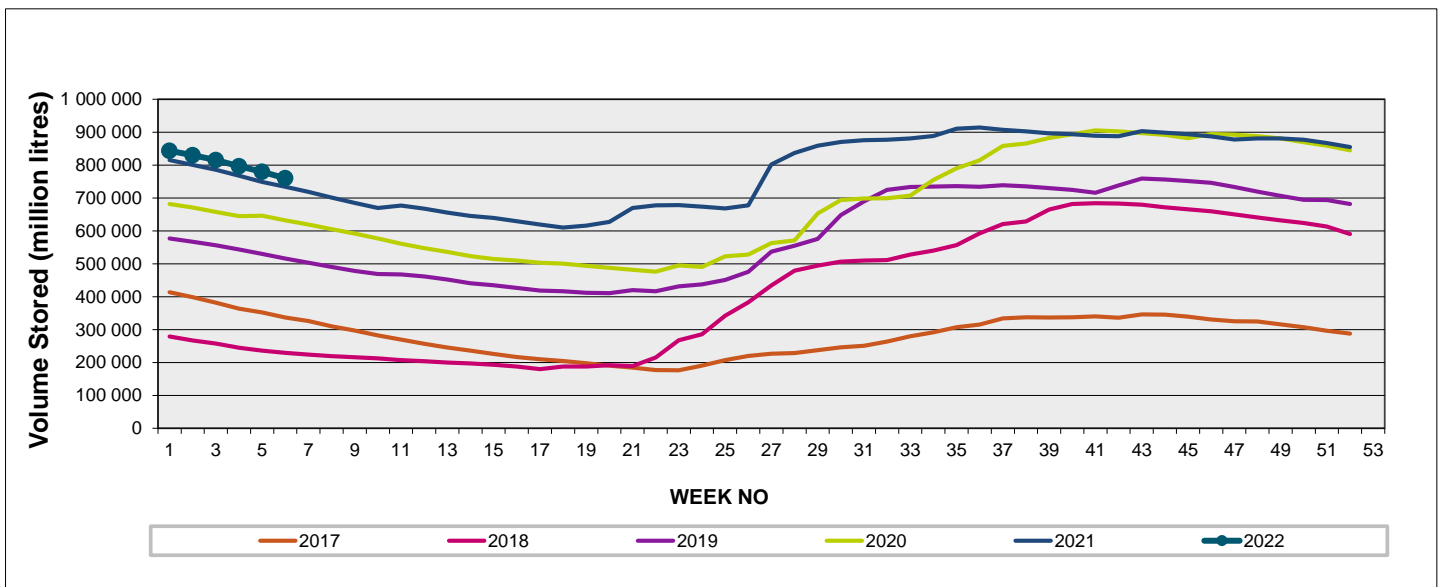
Weekly Change **-2.2%**

MAJOR DAMS (WCWSS)	STORAGE						
	CAPACITY	%	%	%	%	%	%
	MI	07 February 2022	Previous week	2021	2020	2019	2018
BERG RIVER	130 010	86.2	88.6	82.2	83.0	80.5	53.4
STEENBRAS LOWER	33 517	80.1	81.2	77.0	75.6	58.3	41.9
STEENBRAS UPPER	31 767	91.9	93.8	57.3	99.3	70.7	81.6
THEEWATERSKLOOF	480 188	86.9	88.7	85.7	63.0	45.2	12.3
VOËLVLEI	164 095	79.4	82.8	76.6	70.6	72.8	17.3
WEMMERSHOEK	58 644	75.4	77.5	82.6	70.2	68.2	50.1
TOTAL STORED	898 221	759 818	779 743	736 626	624 142	523 254	226 321
% STORAGE		84.6%	86.8%	82.0%	69.5%	58.3%	25.2%

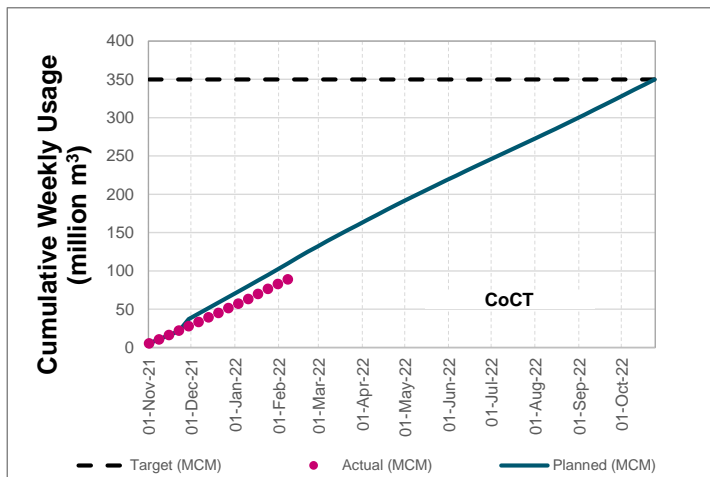
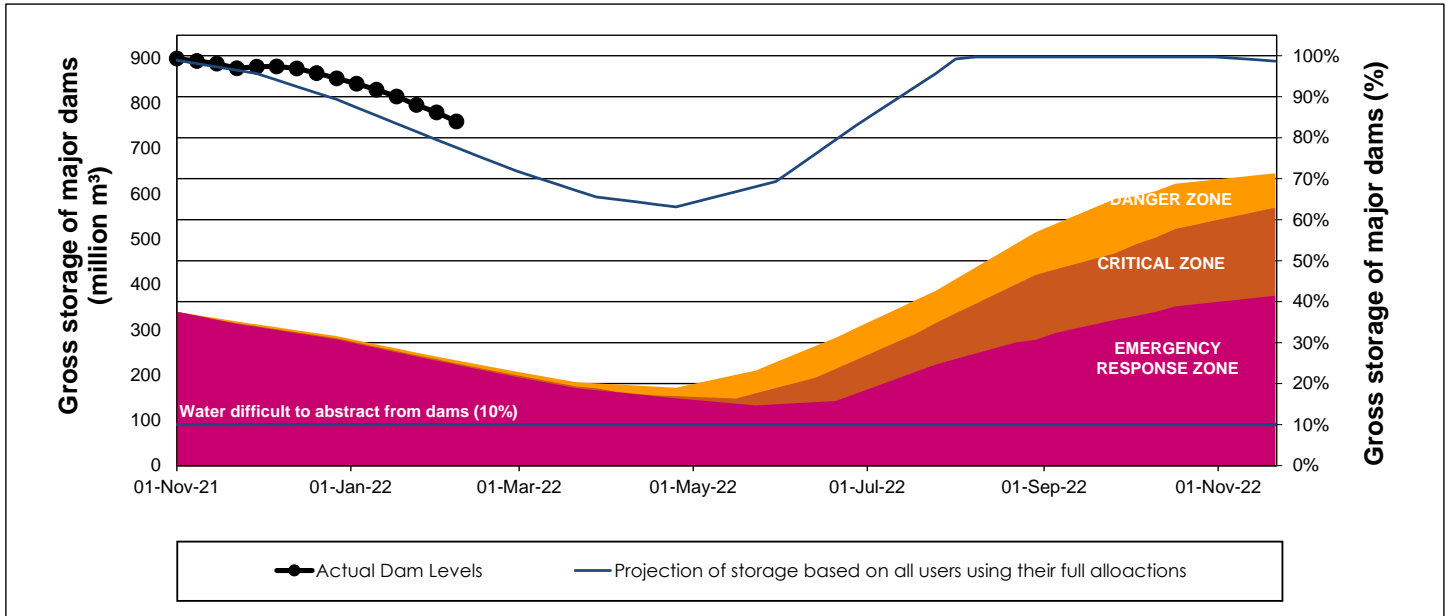
WCWSS Storage Record (2008 - Present)



WCWSS Comparative Storage Graph



WCWSS Dam Storage and Water Use Tracking



Water Stored in Minor Dams

Overall Percentage Full **61.8**

Weekly Change **-0.48**

MINOR DAMS	STORAGE						
	CAPACITY	%	%	%	%	%	%
	MI	07 February 2022	Previous week	2021	2020	2019	2018
ALEXANDRA (Table Mountain)	126	70.7	72.1	30.3	38.7	17.3	38.6
DE VILLIERS (Table Mountain)	243	64.1	63.0	51.8	97.7	51.7	78.0
HELY-HUTCHINSON (Table Mount)	925	43.0	42.4	31.9	55.9	96.9	97.1
KLEINPLAATS (Simon's Town)	1 368	71.3	72.9	72.3	56.9	69.4	47.3
LAND-EN-ZEEZICHT (Helderberg)	451	88.8	89.8	84.5	75.0	91.9	95.9
LEWIS GAY (Simon's Town)	182	71.5	75.5	61.1	9.3	9.6	94.5
VICTORIA (Table Mountain)	128	56.7	57.5	69.8	85.1	74.3	86.5
WOODHEAD (Table Mountain)	954	54.2	53.7	75.3	64.2	51.8	94.0
Total Stored	4 377	2705.7	2726.9	2712.6	2638.4	2988.0	3375.5
Percentages stored		61.8	62.3	62.0	60.3	68.3	77.1

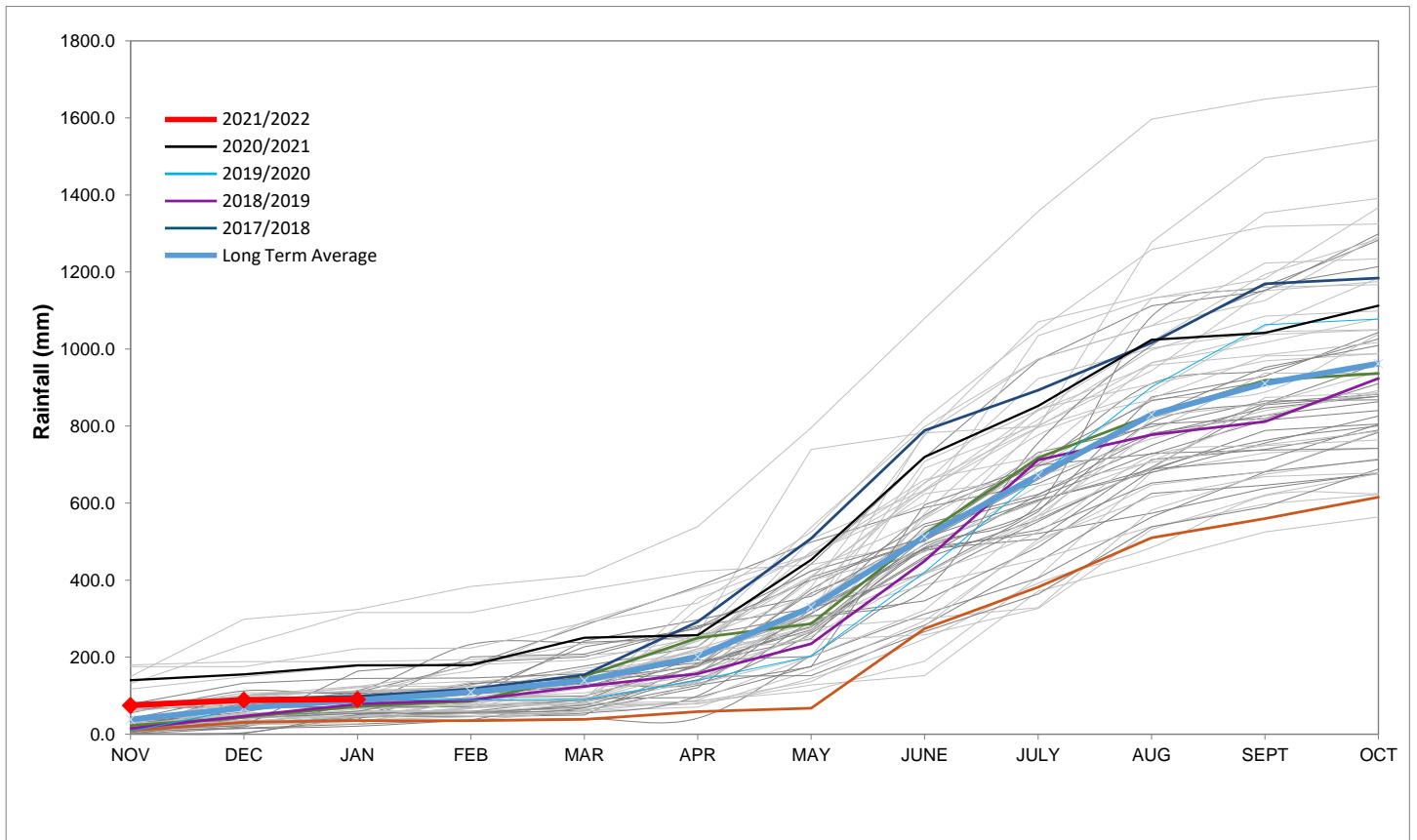
Rainfall Recorded

RAINFALL (mm)	01-Feb	02-Feb	03-Feb	04-Feb	05-Feb	06-Feb	07-Feb	Feb	
								Total*	LT Average
Blackheath Upper	0.0	0.0	5.0	0.0	0.0	0.0		5.0	15.1
Brooklands	0.0	10.0	0.0	0.0	0.0	0.0		10.0	19.2
Newlands	0.0	11.5	12.0	0.0	0.0	0.0		23.5	29.1
Steenbras	0.0	1.6	6.5	0.0	0.0	0.0		8.1	27.0
Table Mountain (Woodhead)	12.0	58.0	0.0	0.0	0.0	0.0		70.0	40.1
Theewaterskloof	0.0	0.0	0.0	0.0	0.0	0.0		0.0	22.6
Tygerberg	0.0	0.0	0.0	0.0	0.0	0.0		0.0	7.1
Voëlvei	0.0	0.2	0.4	0.0	0.0	0.0		0.6	9.3
Wemmershoek	0.0	2.6	1.0	0.0	0.0	0.0		3.6	15.7
Wynberg	0.0	0.0	1.0	0.0	0.0	0.0		1.0	11.7

Notes: *Total/cummulative rainfall for month indicated above
LT: Long Term

Accumulated Monthly Rainfall at Wemmershoek

Note: Wemmershoek station used due to long record and mountainous location



Drinking Water Quality

SAMPLE PASS RATE

Month	Water Quality Compliance (%)	Target (%)
Oct-20	99.17	98
Nov-20	99.17	98
Dec-20	99.14	98
Jan-21	99.16	98
Feb-21	99.12	98
Mar-21	99.08	98
Apr-21	99.07	98
May-21	98.98	98
Jun-21	99.11	98
Jul-21	99.10	98
Aug-21	99.12	98
Sep-21	99.09	98
Oct-21	99.11	98
Nov-21	99.11	98
Dec-21	99.09	98

Notes:

This table shows CCT drinking water quality compliance according to the South African National Standard 241:2015. Compliance, measured against all prescribed chemical and microbiological components, consistently exceeds the very high CCT target of 98%. (Overall compliance percentages of continuous sampling and analysis are released on a monthly basis.