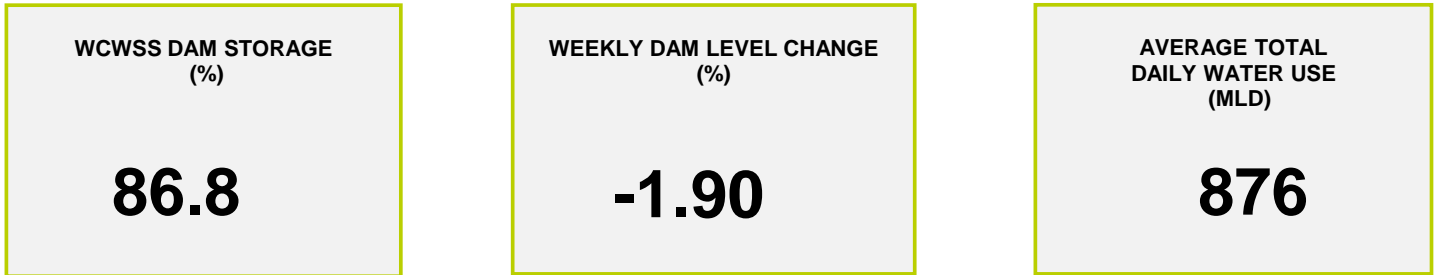
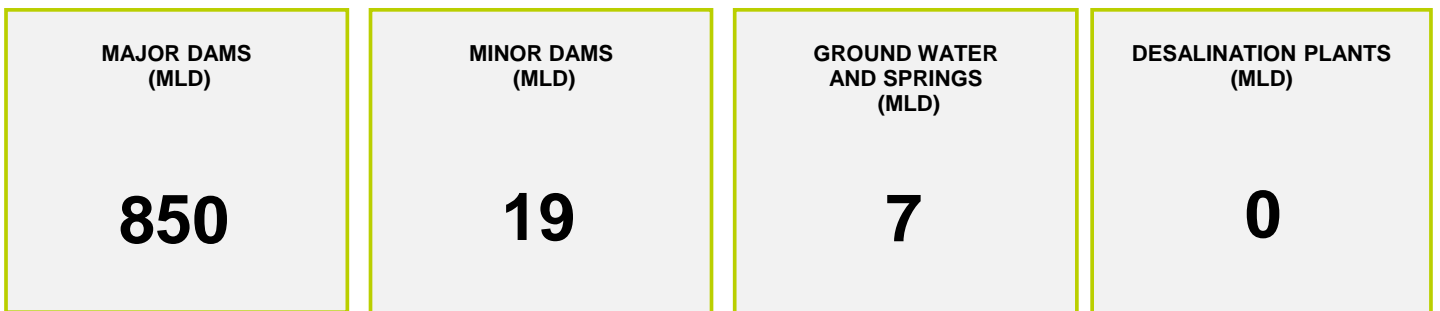




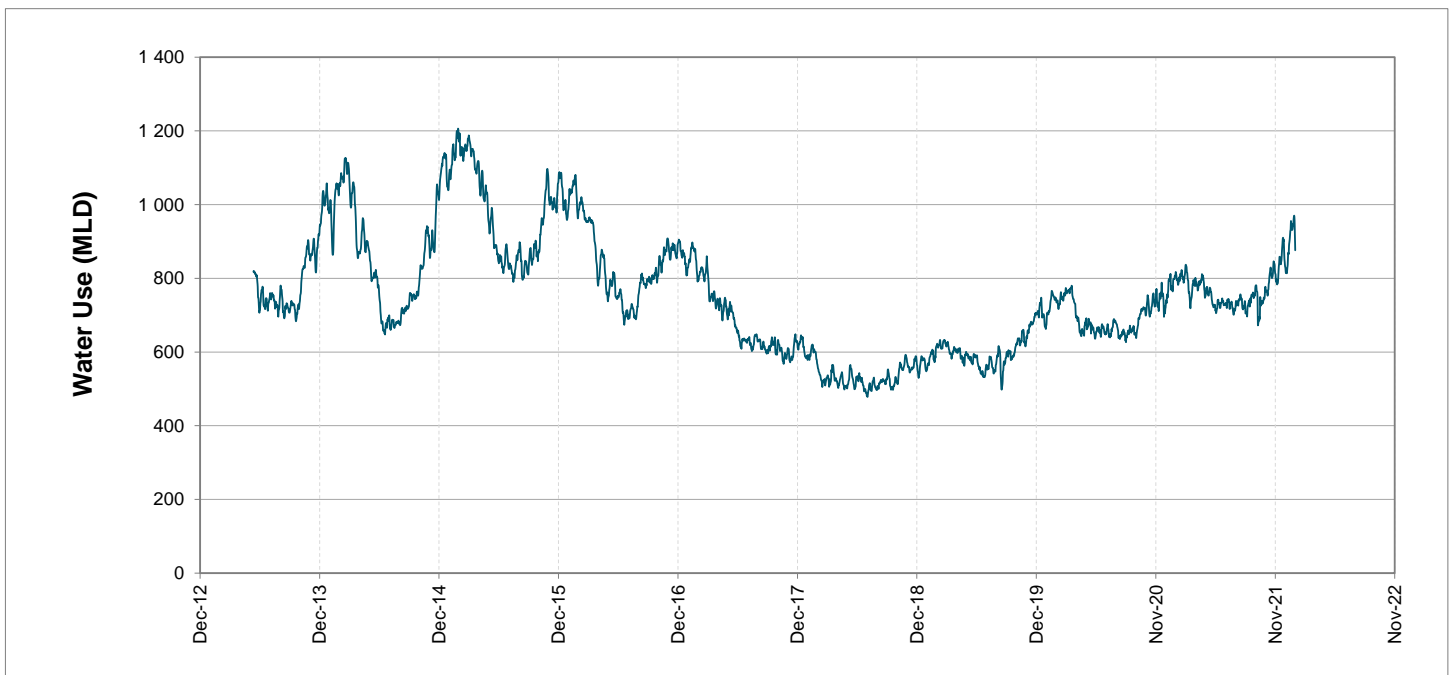
### Headline Statistics



### Water Production from Different Sources



### Overall Water Usage Trend (2010 - Present)



WCWSS means Western Cape Water Supply System

MLD means million litres per day

More information on Water Saving and Restrictions is available on the City of Cape Town's 'ThinkWater' website

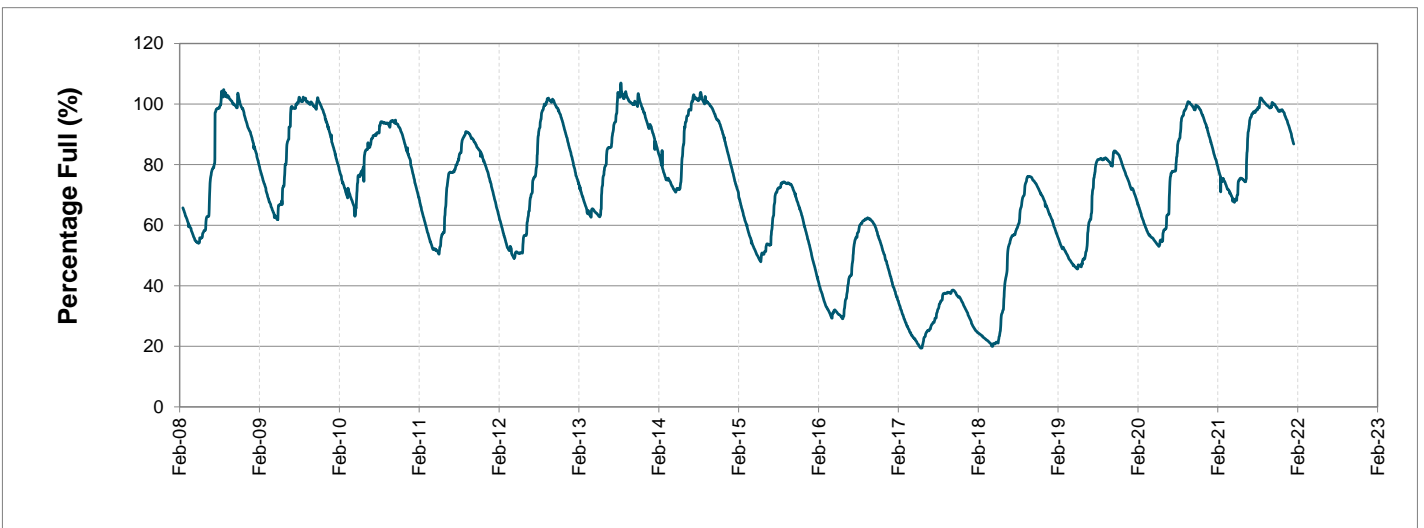
# Water Stored in Major Dams (WCWSS)

Overall Percentage Full **86.8%**

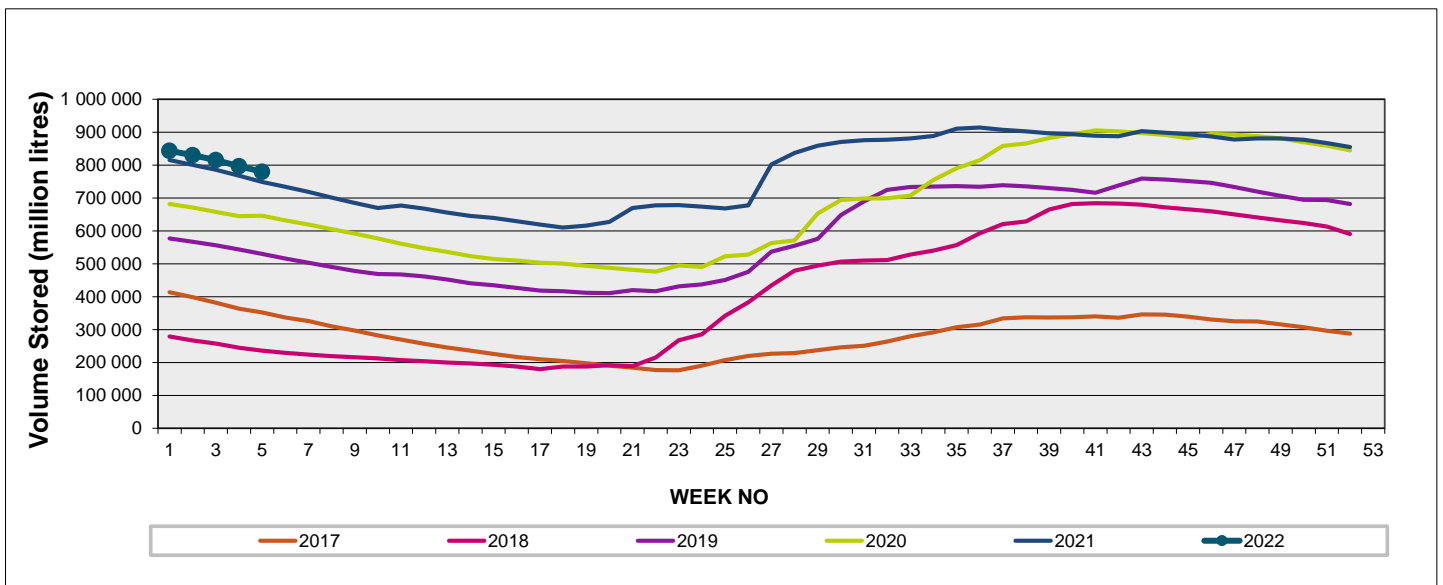
Weekly Change **-1.9%**

MAJOR DAMS (WCWSS)	STORAGE						
	CAPACITY	%	%	%	%	%	%
	MI	31 January 2022	Previous week	2021	2020	2019	2018
BERG RIVER	130 010	88.6	90.2	84.2	84.7	82.5	53.6
STEENBRAS LOWER	33 517	81.2	84.8	79.1	77.6	58.4	43.6
STEENBRAS UPPER	31 767	93.8	94.8	59.0	99.5	70.3	85.7
THEEWATERSKLOOF	480 188	88.7	90.6	86.9	64.2	46.2	13.0
VOËLVLEI	164 095	82.8	84.5	78.8	72.4	74.8	17.8
WEMMERSHOEK	58 644	77.5	79.7	84.4	72.0	70.1	51.9
<b>TOTAL STORED</b>	<b>898 221</b>	<b>779 743</b>	<b>796 424</b>	<b>750 764</b>	<b>636 985</b>	<b>534 922</b>	<b>233 637</b>
<b>% STORAGE</b>		<b>86.8%</b>	<b>88.7%</b>	<b>83.6%</b>	<b>70.9%</b>	<b>59.6%</b>	<b>26.0%</b>

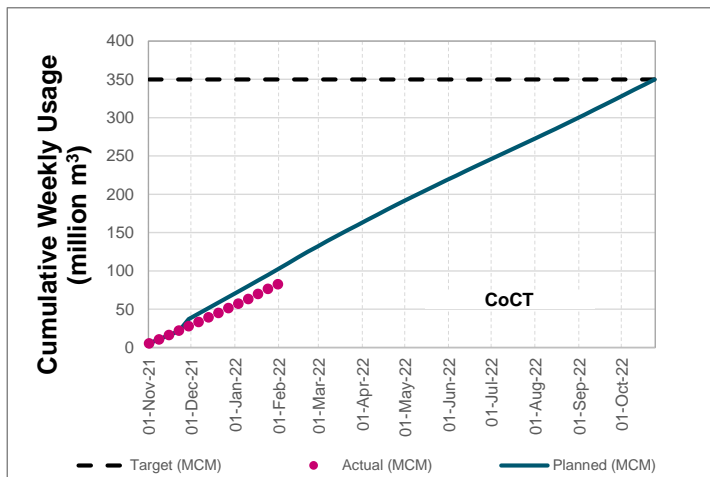
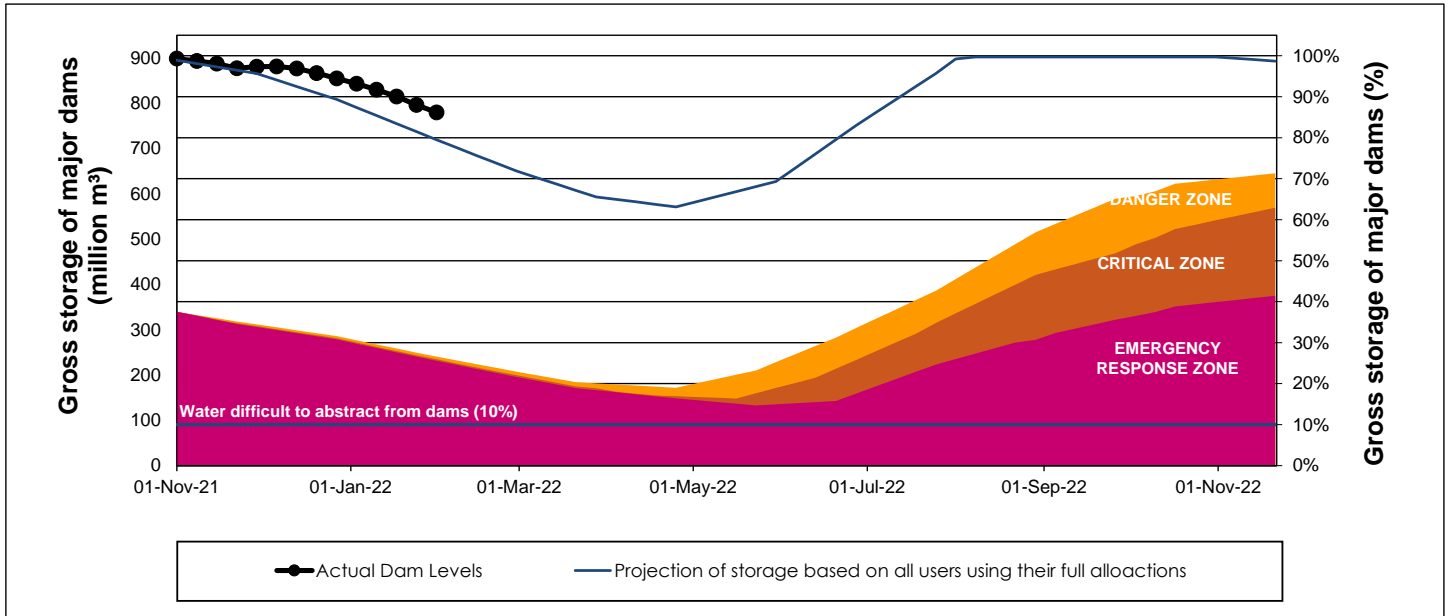
## WCWSS Storage Record (2008 - Present)



## WCWSS Comparative Storage Graph



# WCWSS Dam Storage and Water Use Tracking



## Water Stored in Minor Dams

Overall Percentage Full **62.3**

Weekly Change **-2.80**

MINOR DAMS	STORAGE						
	CAPACITY	%	%	%	%	%	%
	MI	31 January 2022	Previous week	2021	2020	2019	2018
ALEXANDRA (Table Mountain)	126	72.1	76.7	24.6	40.5	39.7	40.4
DE VILLIERS (Table Mountain)	243	63.0	61.7	51.5	97.6	36.4	79.0
HELY-HUTCHINSON (Table Mount)	925	42.4	42.6	30.5	63.8	97.6	97.8
KLEINPLAATS (Simon's Town)	1 368	72.9	74.6	74.1	60.0	70.9	48.9
LAND-EN-ZEEZICHT (Helderberg)	451	89.8	89.8	86.0	77.9	90.3	96.9
LEWIS GAY (Simon's Town)	182	75.5	83.9	66.7	12.2	18.2	92.4
VICTORIA (Table Mountain)	128	57.5	58.8	85.8	85.4	82.0	88.9
WOODHEAD (Table Mountain)	954	53.7	61.9	53.9	64.2	63.3	94.2
<b>Total Stored</b>	<b>4 377</b>	<b>2726.9</b>	<b>2849.6</b>	<b>2547.8</b>	<b>2773.2</b>	<b>3134.4</b>	<b>3412.6</b>
<b>Percentages stored</b>		<b>62.3</b>	<b>65.1</b>	<b>58.2</b>	<b>63.4</b>	<b>71.6</b>	<b>78.0</b>

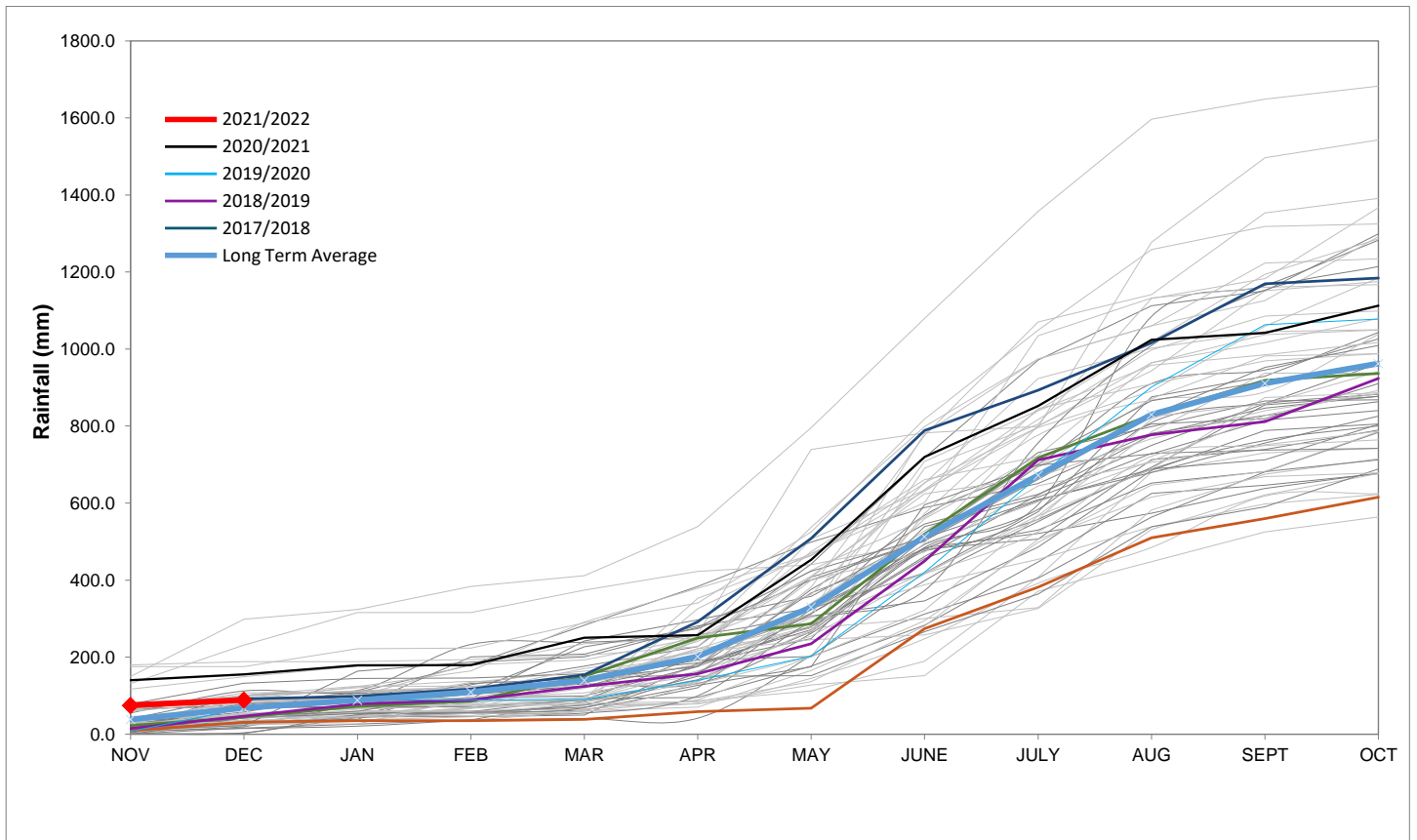
# Rainfall Recorded

RAINFALL (mm)	25-Jan	26-Jan	27-Jan	28-Jan	29-Jan	30-Jan	31-Jan	Jan	
								Total*	LT Average
Blackheath Upper	0.0	0.0	0.0	0.0	0.0	0.0		1.0	15.3
Brooklands	0.0	0.0	0.0	0.0	0.0	0.0		5.0	27.7
Newlands	0.0	0.0	0.0	0.0	0.0	0.0		27.0	37.4
Steenbras	0.0	0.0	0.0	0.0	0.0	0.0		8.3	29.5
Table Mountain (Woodhead)	0.0	0.0	0.0	0.0	0.0	0.0		36.0	52.7
Theewaterskloof	0.0	0.0	0.0	0.0	0.0	0.0		1.7	24.9
Tygerberg	0.0	0.0	0.0	0.0	0.0	0.0		2.3	13.0
Voëlvei	0.0	0.0	0.0	0.0	0.0	0.0		0.0	13.2
Wemmershoek	0.0	0.0	0.0	0.0	0.0	0.0		1.7	20.6
Wynberg	0.0	0.0	0.0	0.0	0.0	0.0		0.3	21.2

Notes: \*Total/cummulative rainfall for month indicated above  
LT: Long Term

# Accumulated Monthly Rainfall at Wemmershoek

Note: Wemmershoek station used due to long record and mountainous location



## Drinking Water Quality

### SAMPLE PASS RATE

Month	Water Quality Compliance (%)	Target (%)
Oct-20	99.17	98
Nov-20	99.17	98
Dec-20	99.14	98
Jan-21	99.16	98
Feb-21	99.12	98
Mar-21	99.08	98
Apr-21	99.07	98
May-21	98.98	98
Jun-21	99.11	98
Jul-21	99.10	98
Aug-21	99.12	98
Sep-21	99.09	98
Oct-21	99.11	98
Nov-21	99.11	98
Dec-21	99.09	98

#### Notes:

This table shows CCT drinking water quality compliance according to the South African National Standard 241:2015. Compliance, measured against all prescribed chemical and microbiological components, consistently exceeds the very high CCT target of 98%. (Overall compliance percentages of continuous sampling and analysis are released on a monthly basis.