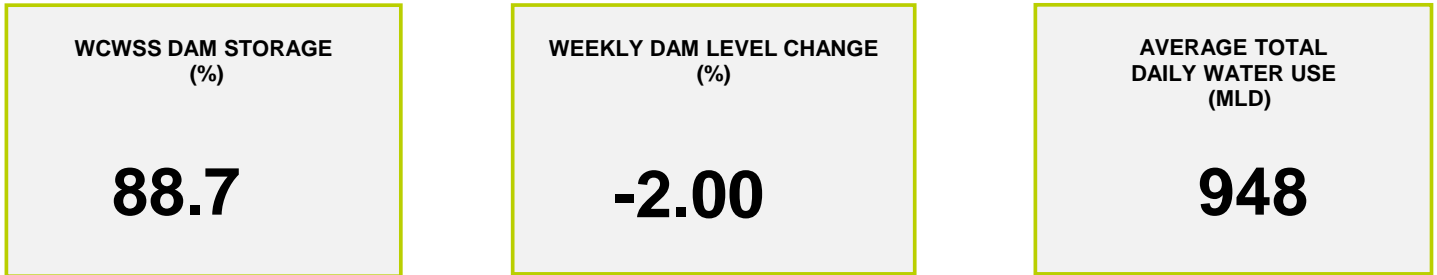
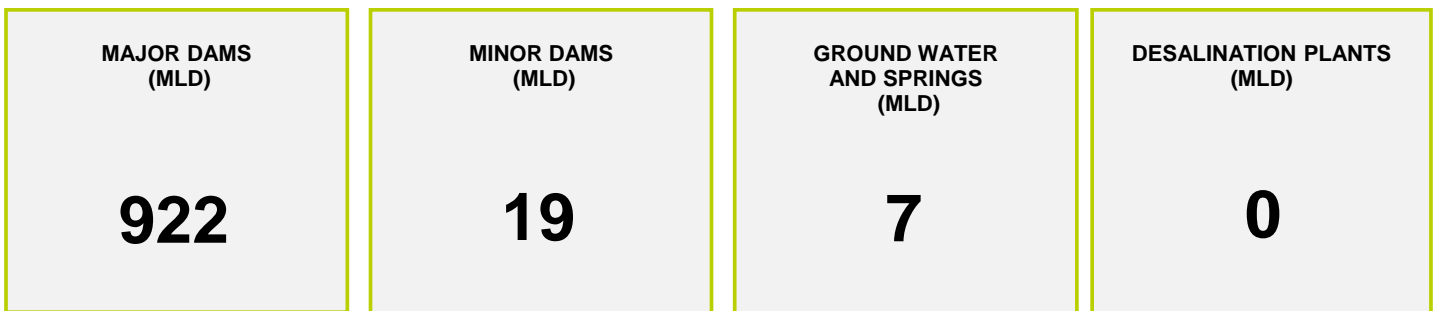




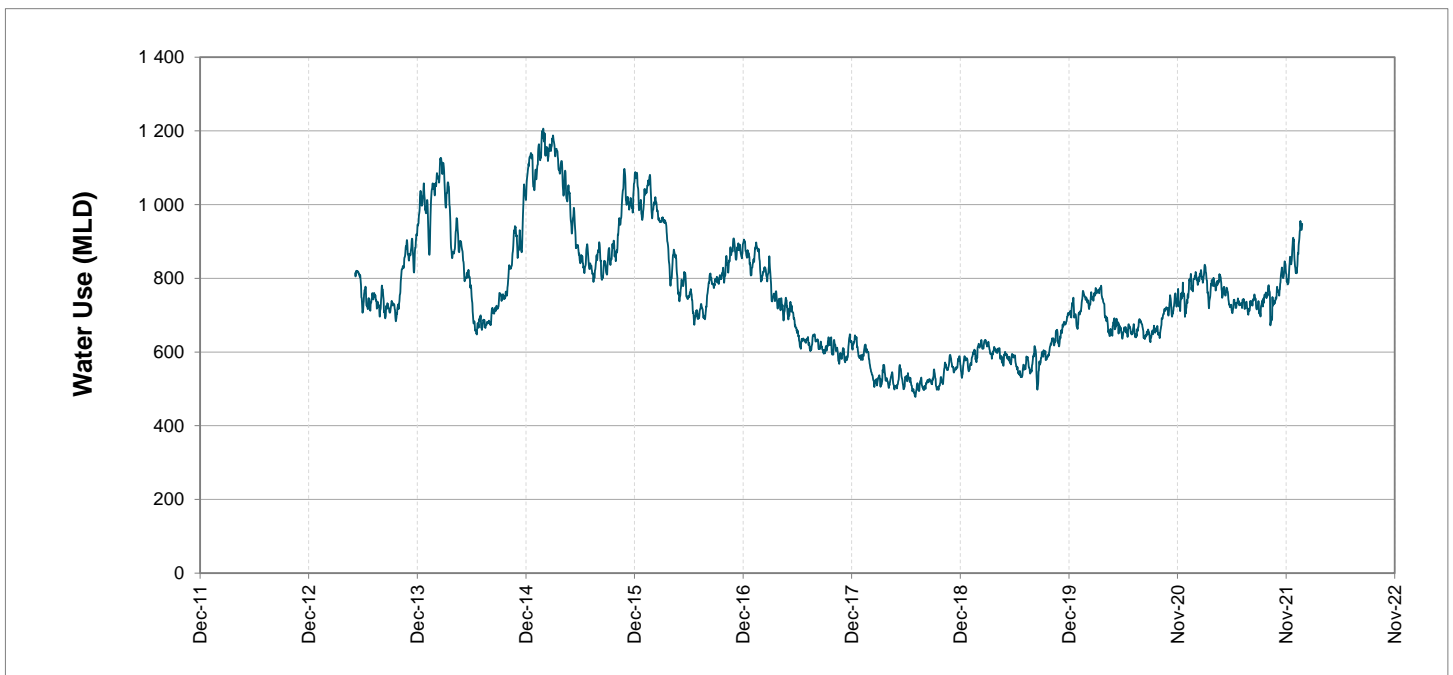
Headline Statistics



Water Production from Different Sources



Overall Water Usage Trend (2010 - Present)



WCWSS means Western Cape Water Supply System

MLD means million litres per day

More information on Water Saving and Restrictions is available on the City of Cape Town's 'ThinkWater' website

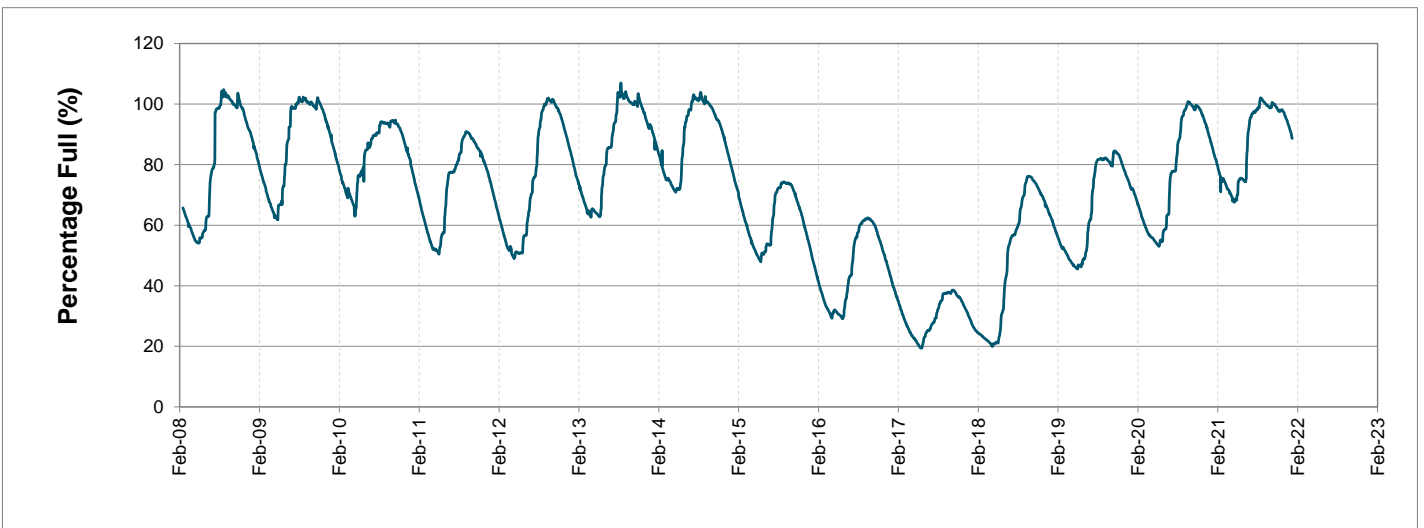
Water Stored in Major Dams (WCWSS)

Overall Percentage Full **88.7%**

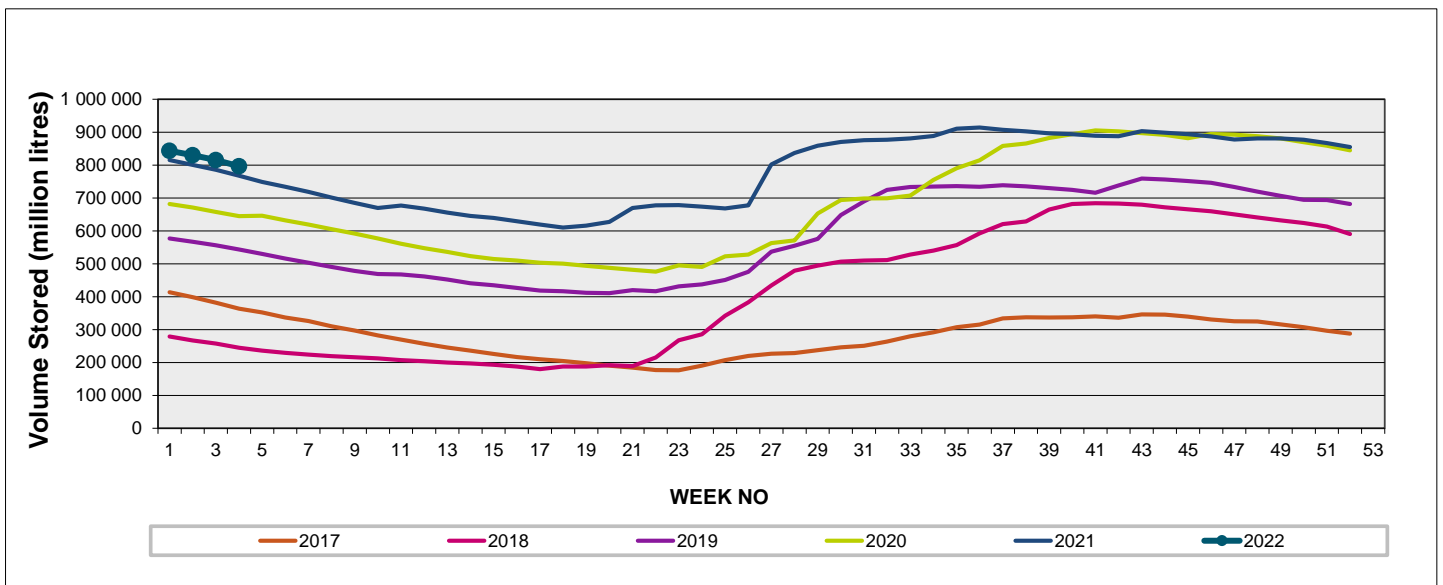
Weekly Change **-2.0%**

MAJOR DAMS (WCWSS)	STORAGE						
	CAPACITY	%	%	%	%	%	%
	MI	24 January 2022	Previous week	2021	2020	2019	2018
BERG RIVER	130 010	90.2	92.0	86.4	86.2	84.8	54.8
STEENBRAS LOWER	33 517	84.8	85.1	80.9	79.1	61.1	45.1
STEENBRAS UPPER	31 767	94.8	95.4	63.9	99.7	70.7	86.0
THEEWATERSKLOOF	480 188	90.6	93.0	88.7	65.2	47.9	13.9
VOËLVLEI	164 095	84.5	86.7	81.1	74.2	77.8	18.5
WEMMERSHOEK	58 644	79.7	81.6	86.2	73.9	72.0	52.4
TOTAL STORED	898 221	796 424	814 885	769 626	648 675	552 973	241 358
% STORAGE		88.7%	90.7%	85.7%	72.2%	61.6%	26.9%

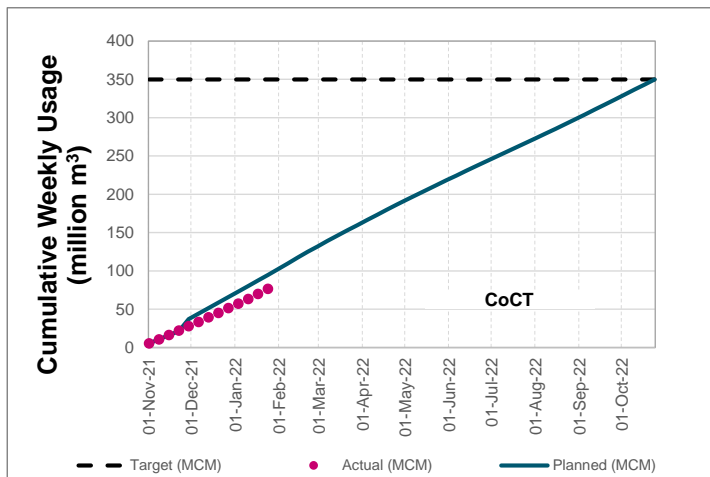
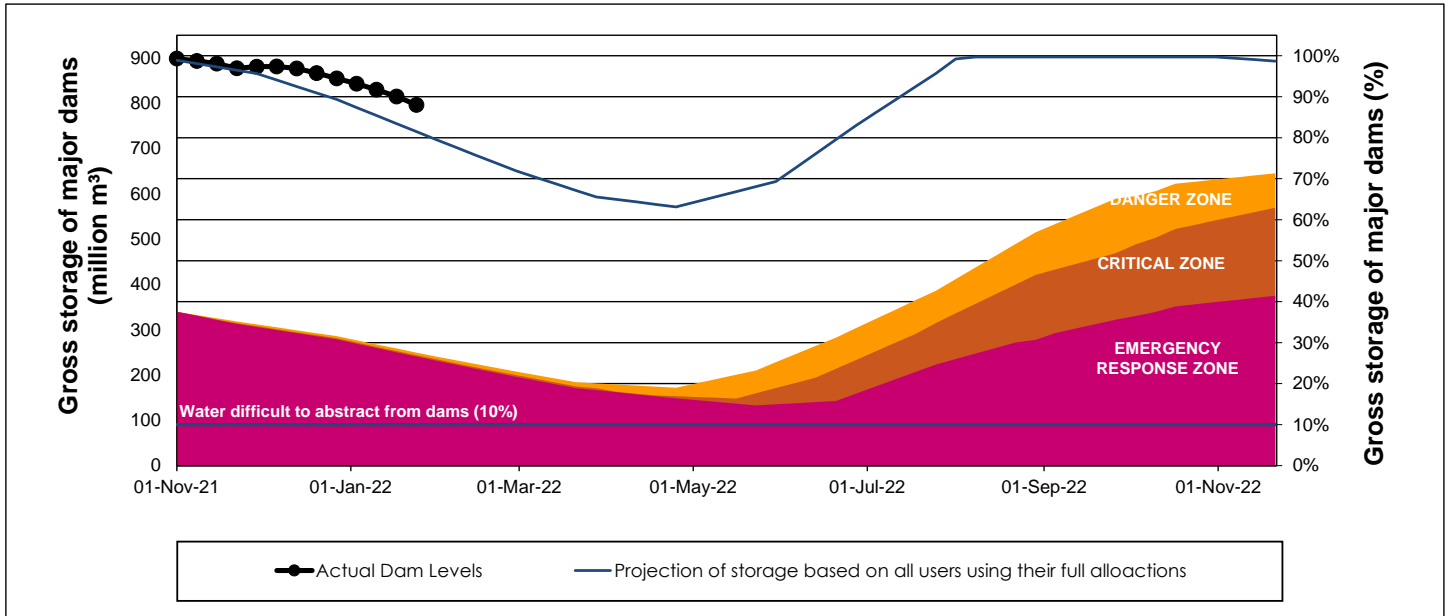
WCWSS Storage Record (2008 - Present)



WCWSS Comparative Storage Graph



WCWSS Dam Storage and Water Use Tracking



Water Stored in Minor Dams

Overall Percentage Full **65.1**

Weekly Change **-3.46**

MINOR DAMS	STORAGE						
	CAPACITY	%	%	%	%	%	%
	MI	24 January 2022	Previous week	2021	2020	2019	2018
ALEXANDRA (Table Mountain)	126	76.7	77.6	44.2	42.0	41.6	41.9
DE VILLIERS (Table Mountain)	243	61.7	61.1	51.8	99.1	36.9	79.5
HELY-HUTCHINSON (Table Mount)	925	42.6	42.5	7.6	64.5	98.5	98.3
KLEINPLAATS (Simon's Town)	1 368	74.6	77.7	76.4	62.7	72.7	50.1
LAND-EN-ZEEZICHT (Helderberg)	451	89.8	93.4	87.2	79.5	93.8	98.9
LEWIS GAY (Simon's Town)	182	83.9	90.0	72.3	14.2	27.1	94.8
VICTORIA (Table Mountain)	128	58.8	59.0	88.2	88.2	83.4	89.7
WOODHEAD (Table Mountain)	954	61.9	70.8	88.3	67.6	77.0	94.3
Total Stored	4 377	2849.6	3000.8	2739.8	2867.6	3332.7	3451.8
Percentages stored		65.1	68.6	62.6	65.5	76.1	78.9

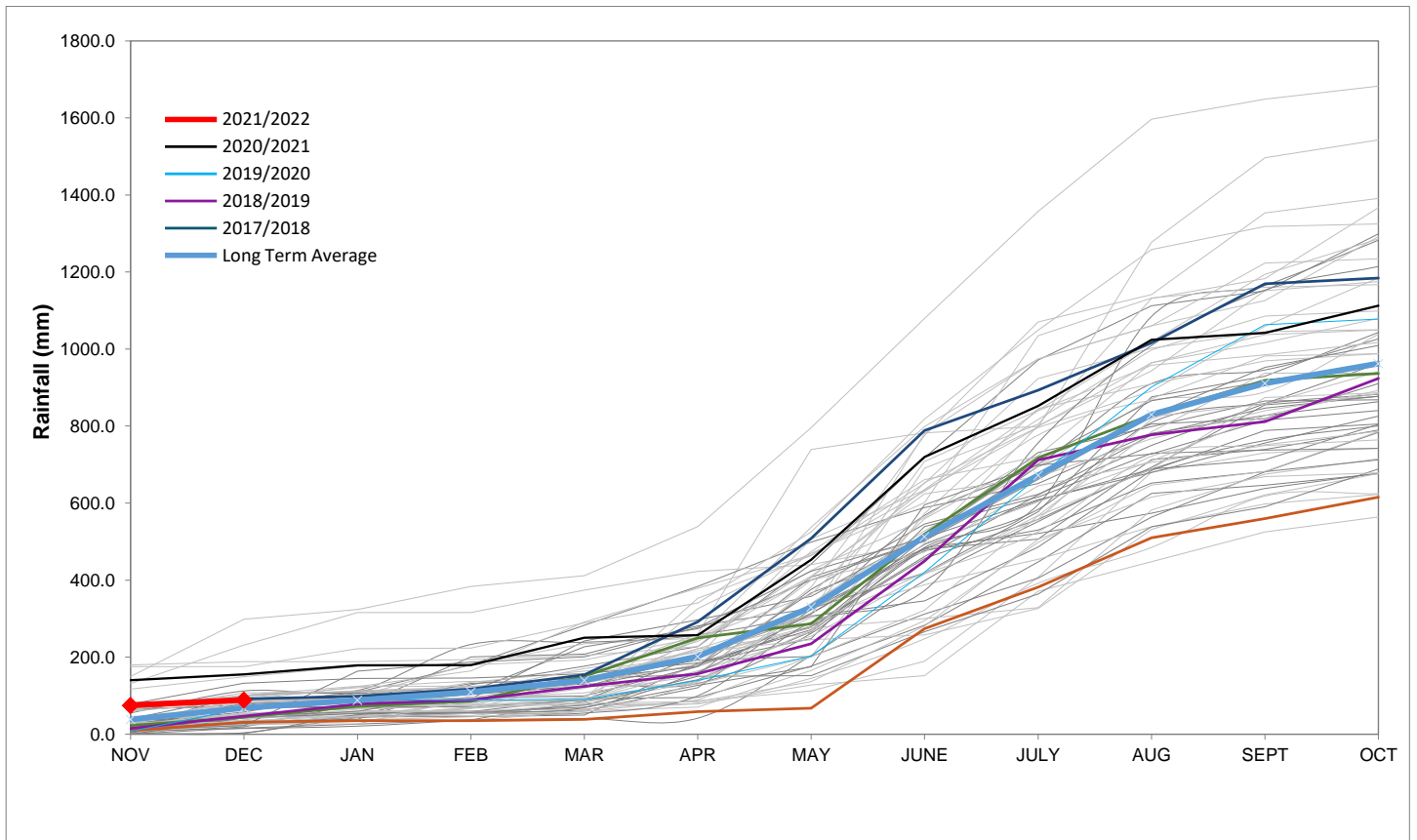
Rainfall Recorded

RAINFALL (mm)	18-Jan	19-Jan	20-Jan	21-Jan	22-Jan	23-Jan	24-Jan	Jan	
								Total*	LT Average
Blackheath Upper	0.0	0.0	0.0	0.0	0.0	0.0		1.0	15.3
Brooklands	0.0	0.0	0.0	0.0	0.0	1.0		5.0	27.7
Newlands	13.5	0.0	0.0	0.0	0.0	0.0		27.0	37.4
Steenbras	0.8	0.0	0.0	0.0	0.0	0.0		8.3	29.5
Table Mountain (Woodhead)	10.0	0.0	0.0	0.0	0.0	0.0		36.0	52.7
Theewaterskloof	0.0	0.0	0.0	0.0	0.0	0.0		0.0	24.9
Tygerberg	0.0	0.0	0.0	0.0	0.0	0.0		2.3	13.0
Voëlvei	0.0	0.0	0.0	0.0	0.0	0.0		0.0	13.2
Wemmershoek	1.7	0.0	0.0	0.0	0.0	0.0		1.7	20.6
Wynberg	0.0	0.0	0.0	0.0	0.0	0.0		0.3	21.2

Notes: *Total/cummulative rainfall for month indicated above
LT: Long Term

Accumulated Monthly Rainfall at Wemmershoek

Note: Wemmershoek station used due to long record and mountainous location



Drinking Water Quality

SAMPLE PASS RATE

Month	Water Quality Compliance (%)	Target (%)
Oct-20	99.17	98
Nov-20	99.17	98
Dec-20	99.14	98
Jan-21	99.16	98
Feb-21	99.12	98
Mar-21	99.08	98
Apr-21	99.07	98
May-21	98.98	98
Jun-21	99.11	98
Jul-21	99.10	98
Aug-21	99.12	98
Sep-21	99.09	98
Oct-21	99.11	98
Nov-21	99.11	98
Dec-21	99.09	98

Notes:

This table shows CCT drinking water quality compliance according to the South African National Standard 241:2015. Compliance, measured against all prescribed chemical and microbiological components, consistently exceeds the very high CCT target of 98%. (Overall compliance percentages of continuous sampling and analysis are released on a monthly basis.