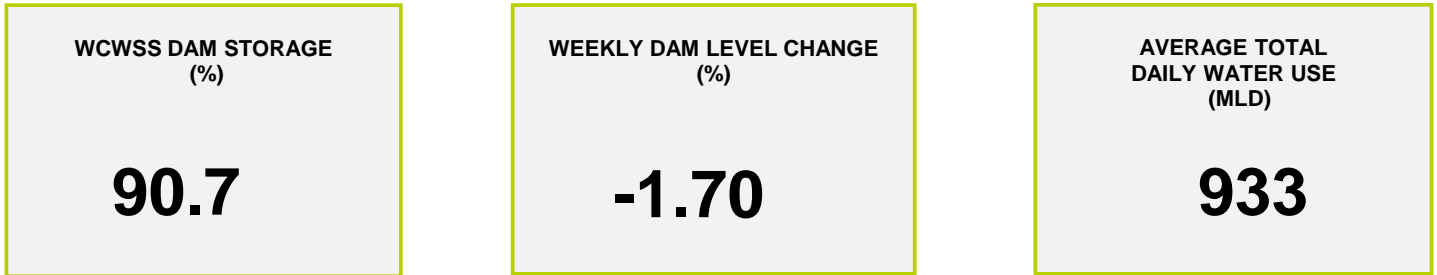
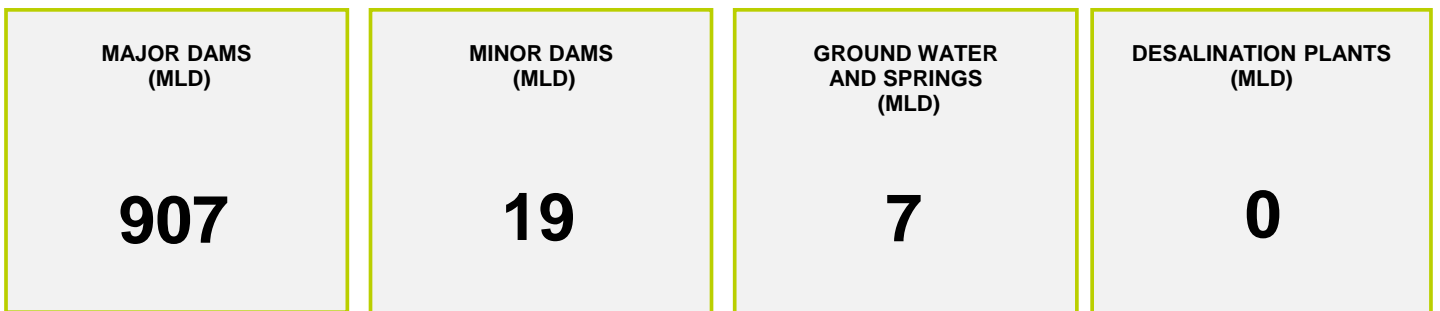




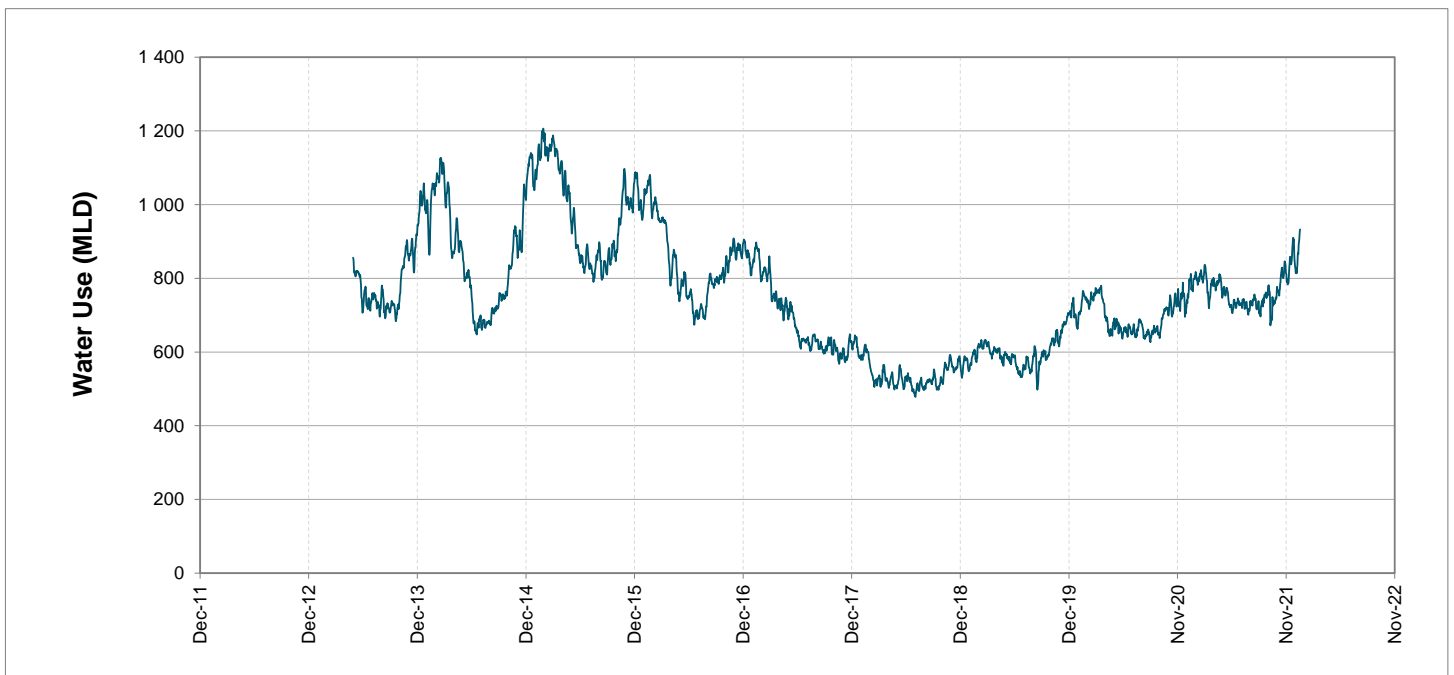
Headline Statistics



Water Production from Different Sources



Overall Water Usage Trend (2010 - Present)



WCWSS means Western Cape Water Supply System

MLD means million litres per day

More information on Water Saving and Restrictions is available on the City of Cape Town's 'ThinkWater' website

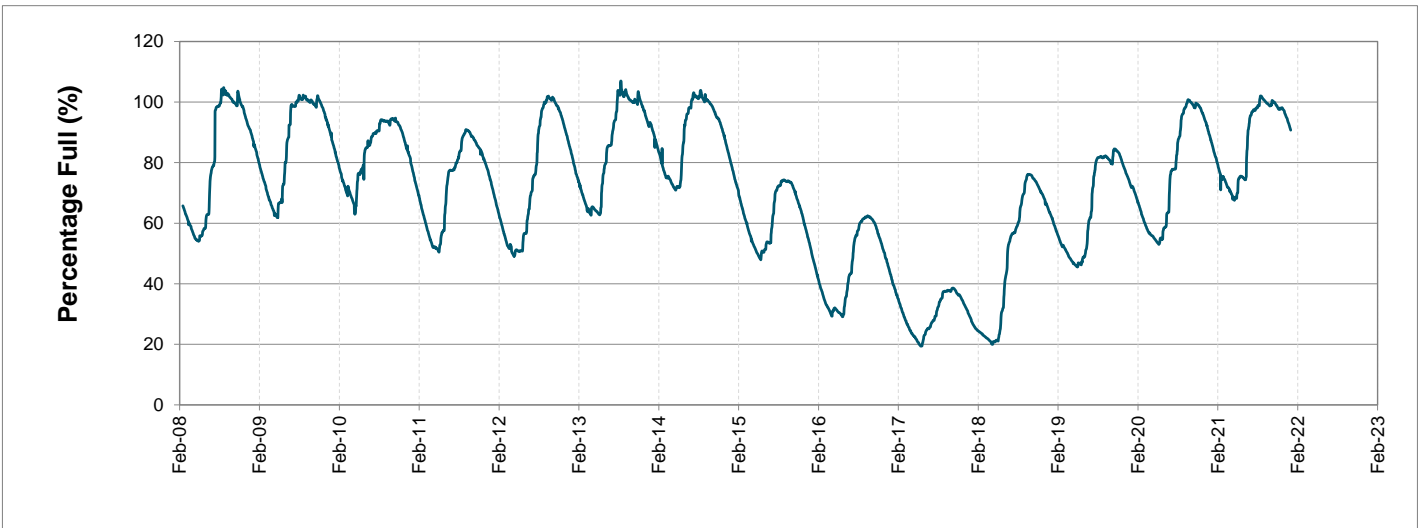
Water Stored in Major Dams (WCWSS)

Overall Percentage Full **90.7%**

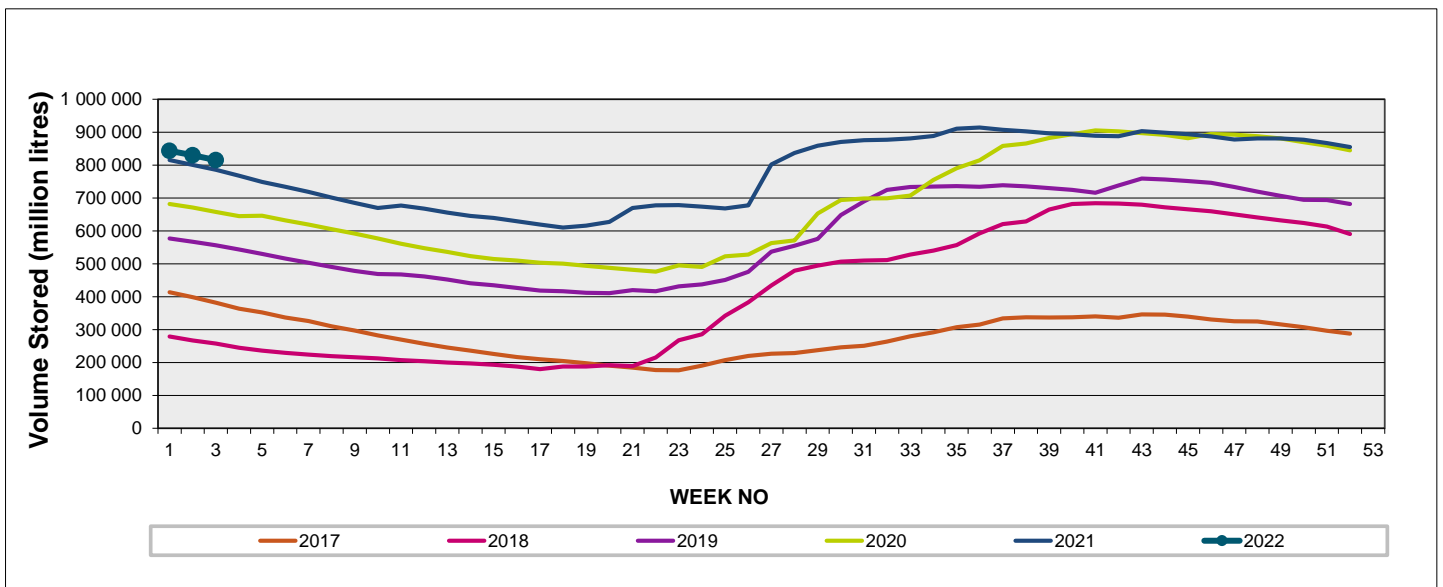
Weekly Change **-1.7%**

MAJOR DAMS (WCWSS)	STORAGE						
	CAPACITY	%	%	%	%	%	%
	MI	17 January 2022	Previous week	2021	2020	2019	2018
BERG RIVER	130 010	92.0	93.8	88.3	87.0	86.5	56.1
STEENBRAS LOWER	33 517	85.1	86.9	82.3	78.6	62.8	46.9
STEENBRAS UPPER	31 767	95.4	96.1	66.4	99.3	70.8	90.3
THEEWATERSKLOOF	480 188	93.0	94.5	90.3	64.1	48.3	15.5
VOËLVLEI	164 095	86.7	88.7	82.7	76.2	79.8	19.1
WEMMERSHOEK	58 644	81.6	83.5	88.1	75.9	73.8	52.3
TOTAL STORED	898 221	814 885	829 836	784 511	648 207	562 220	254 070
% STORAGE		90.7%	92.4%	87.3%	72.2%	62.6%	28.3%

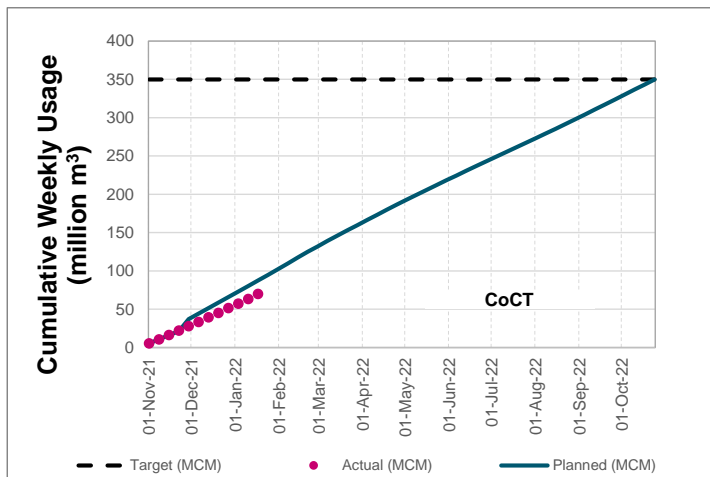
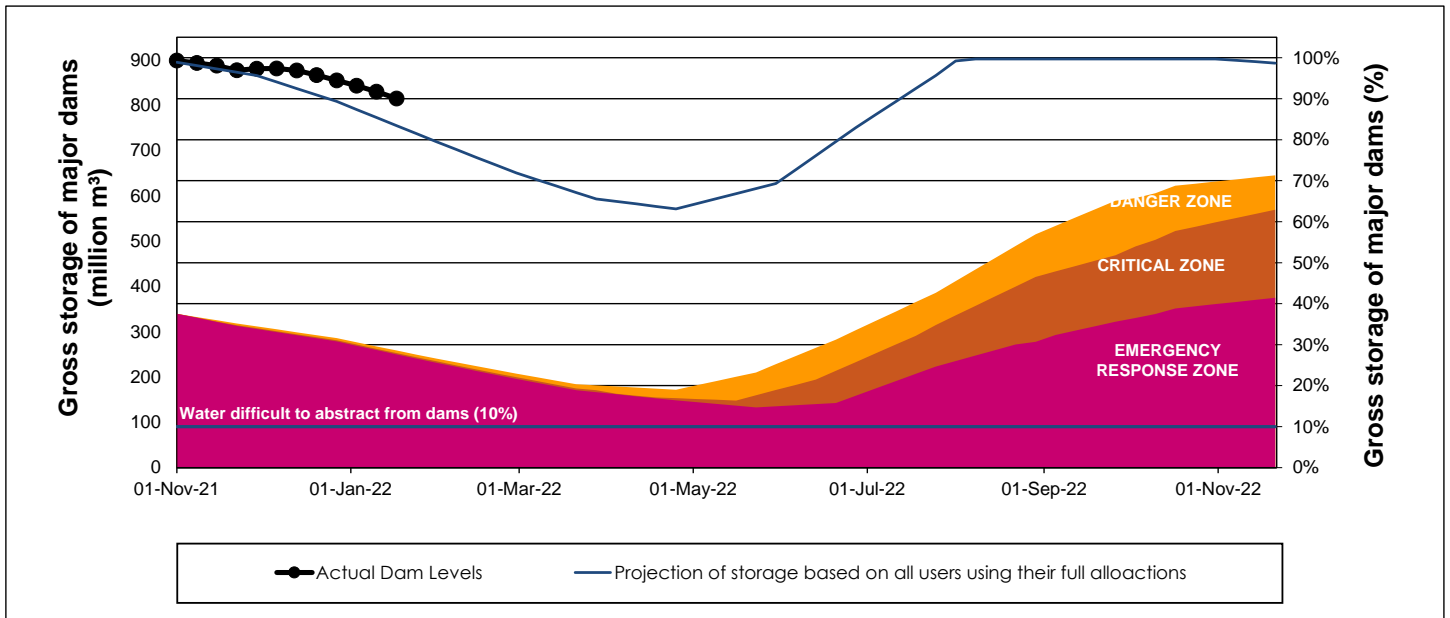
WCWSS Storage Record (2008 - Present)



WCWSS Comparative Storage Graph



WCWSS Dam Storage and Water Use Tracking



Water Stored in Minor Dams

Overall Percentage Full **68.6**

Weekly Change **-2.83**

MINOR DAMS	STORAGE						
	CAPACITY	%	%	%	%	%	%
	MI	17 January 2022	Previous week	2021	2020	2019	2018
ALEXANDRA (Table Mountain)	126	77.6	82.8	54.4	43.5	47.2	43.8
DE VILLIERS (Table Mountain)	243	61.1	60.7	52.4	98.6	39.5	79.9
HELY-HUTCHINSON (Table Mount)	925	42.5	43.1	33.6	64.7	98.6	99.0
KLEINPLAATS (Simon's Town)	1 368	77.7	81.2	77.3	66.3	74.5	52.0
LAND-EN-ZEEZICHT (Helderberg)	451	93.4	93.5	87.7	81.3	95.7	100.0
LEWIS GAY (Simon's Town)	182	90.0	80.0	74.7	14.7	36.5	98.2
VICTORIA (Table Mountain)	128	59.0	61.6	89.7	88.2	84.7	91.2
WOODHEAD (Table Mountain)	954	70.8	79.2	85.7	68.9	78.5	94.0
Total Stored	4 377	3000.8	3124.5	2990.1	2938.1	3411.9	3496.7
Percentages stored		68.6	71.4	68.3	67.1	78.0	79.9

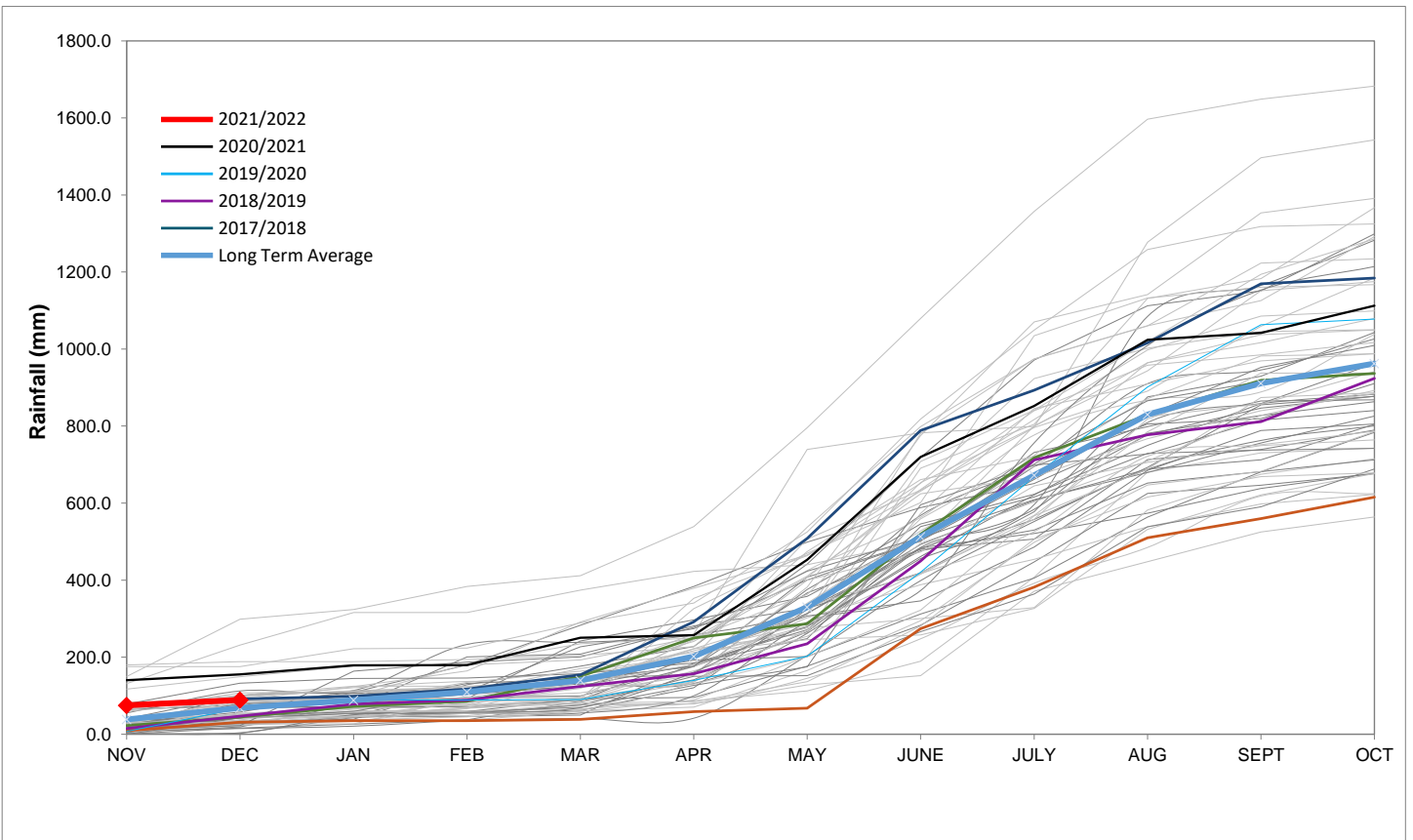
Rainfall Recorded

RAINFALL (mm)	11-Jan	12-Jan	13-Jan	14-Jan	15-Jan	16-Jan	17-Jan	Jan	
								Total*	LT Average
Blackheath Upper	0.0	0.0	0.0	0.0	0.0	0.0	0.0	1.0	15.3
Brooklands	0.0	0.0	0.0	0.0	0.0	0.0	0.0	4.0	27.7
Newlands	0.0	0.0	0.0	0.0	0.0	0.0	0.0	13.5	37.4
Steenbras	0.0	0.0	0.0	0.0	0.0	0.0	0.0	7.5	29.5
Table Mountain (Woodhead)	0.0	0.0	0.0	0.0	0.0	0.0	0.0	19.0	52.7
Theewaterskloof	0.0	0.0	0.0	0.0	0.0	0.0	0.0	0.0	24.9
Tygerberg	0.0	0.0	0.0	0.0	0.0	0.0	0.0	2.3	13.0
Voëlvei	0.0	0.0	0.0	0.0	0.0	0.0	0.0	0.0	13.2
Wemmershoek	0.0	0.0	0.0	0.0	0.0	0.0	0.0	0.0	20.6
Wynberg	0.0	0.0	0.0	0.0	0.0	0.0	0.0	0.3	21.2

Notes: *Total/cummulative rainfall for month indicated above
LT: Long Term

Accumulated Monthly Rainfall at Wemmershoek

Note: Wemmershoek station used due to long record and mountainous location



Drinking Water Quality

SAMPLE PASS RATE

Month	Water Quality Compliance (%)	Target (%)
Oct-20	99.17	98
Nov-20	99.17	98
Dec-20	99.14	98
Jan-21	99.16	98
Feb-21	99.12	98
Mar-21	99.08	98
Apr-21	99.07	98
May-21	98.98	98
Jun-21	99.11	98
Jul-21	99.10	98
Aug-21	99.12	98
Sep-21	99.09	98
Oct-21	99.11	98
Nov-21	99.11	98
Dec-21	99.09	98

Notes:

This table shows CCT drinking water quality compliance according to the South African National Standard 241:2015. Compliance, measured against all prescribed chemical and microbiological components, consistently exceeds the very high CCT target of 98%. (Overall compliance percentages of continuous sampling and analysis are released on a monthly basis.