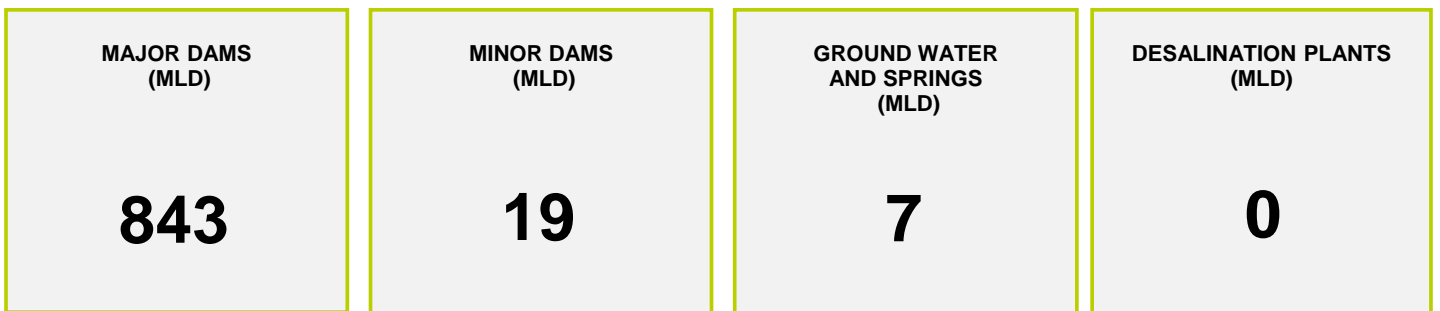




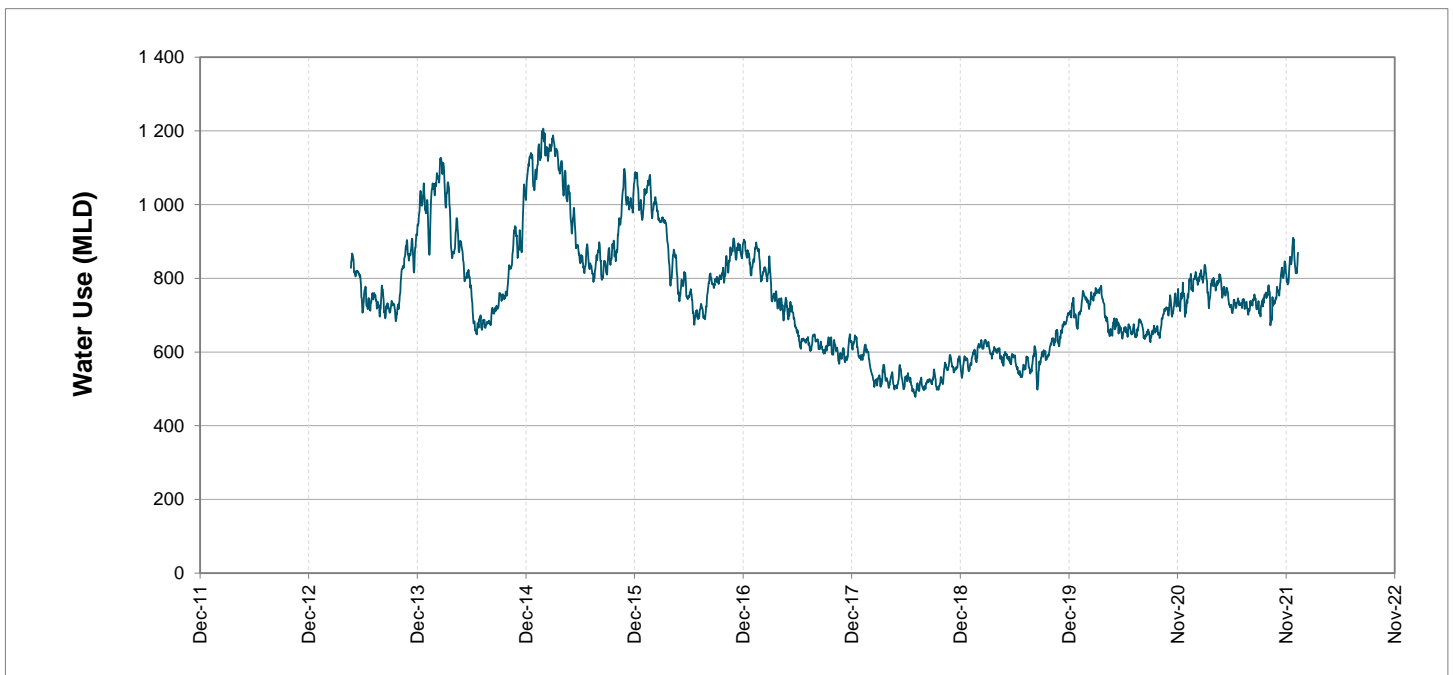
Headline Statistics



Water Production from Different Sources



Overall Water Usage Trend (2010 - Present)



WCWSS means Western Cape Water Supply System

MLD means million litres per day

More information on Water Saving and Restrictions is available on the City of Cape Town's 'ThinkWater' website

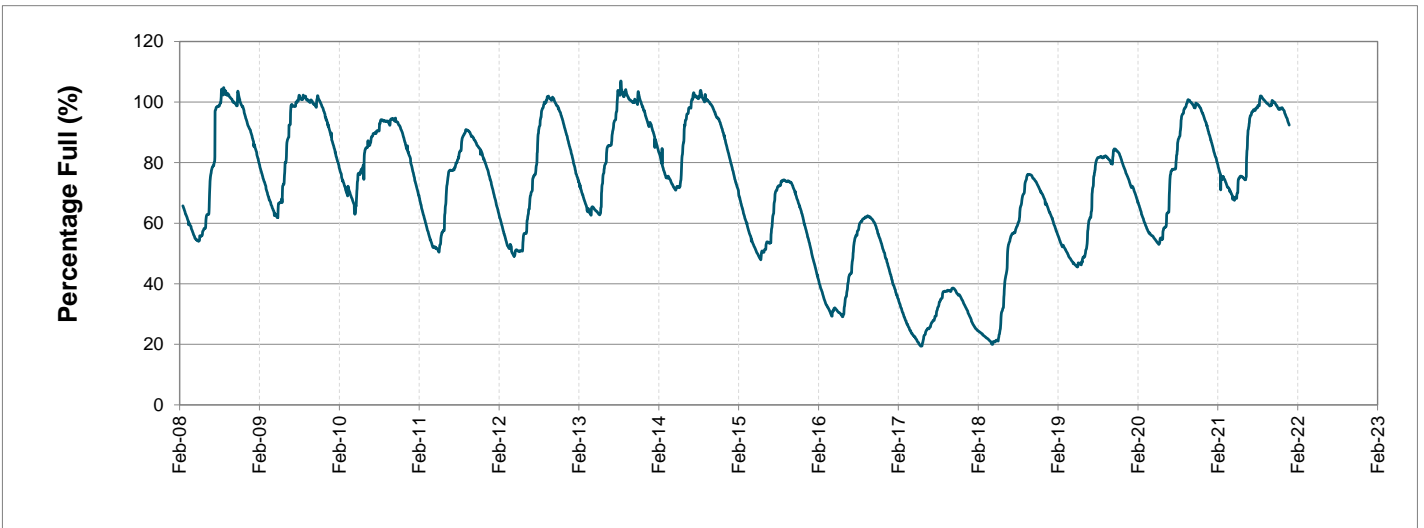
Water Stored in Major Dams (WCWSS)

Overall Percentage Full **92.4%**

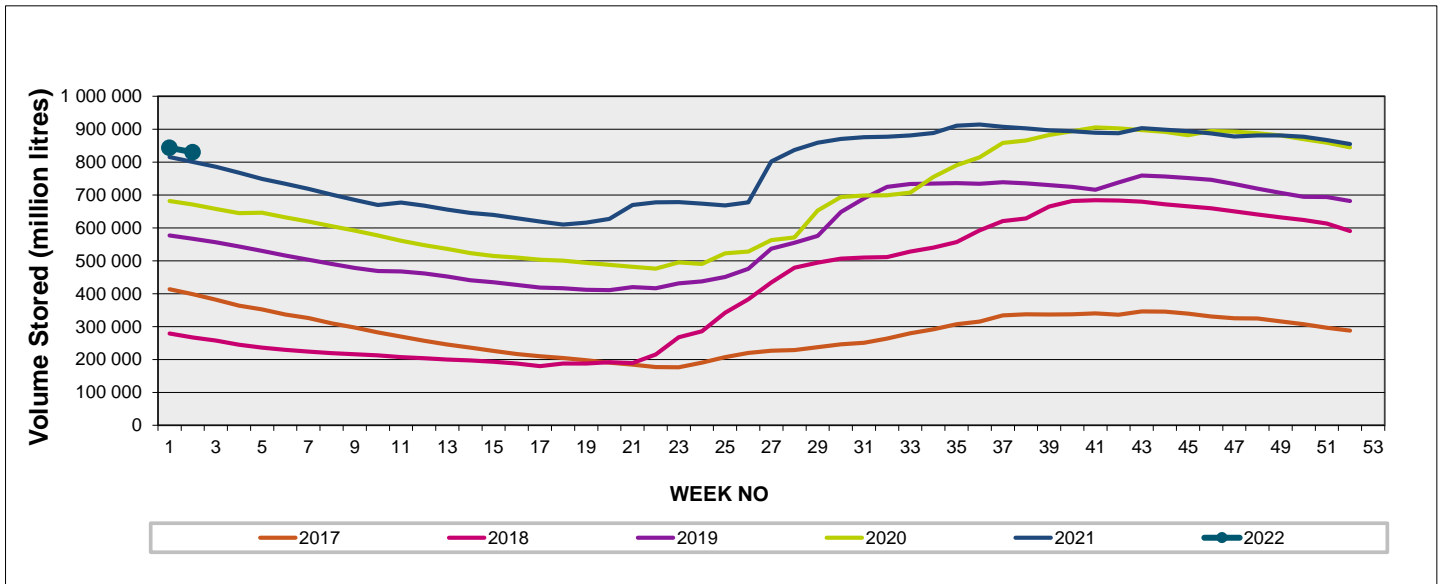
Weekly Change **-1.5%**

MAJOR DAMS (WCWSS)	STORAGE						
	CAPACITY	%	%	%	%	%	%
	MI	10 January 2022	Previous week	2021	2020	2019	2018
BERG RIVER	130 010	93.8	95.6	90.4	89.0	87.2	57.6
STEENBRAS LOWER	33 517	86.9	89.2	84.9	81.7	65.0	48.6
STEENBRAS UPPER	31 767	96.1	96.7	70.6	99.6	69.7	92.0
THEEWATERSKLOOF	480 188	94.5	95.8	91.8	65.4	49.3	16.5
VOËLVLEI	164 095	88.7	90.3	84.8	77.9	81.6	20.3
WEMMERSHOEK	58 644	83.5	85.4	89.8	78.1	75.4	52.3
TOTAL STORED	898 221	829 836	843 226	801 231	662 492	572 021	263 795
% STORAGE		92.4%	93.9%	89.2%	73.8%	63.7%	29.4%

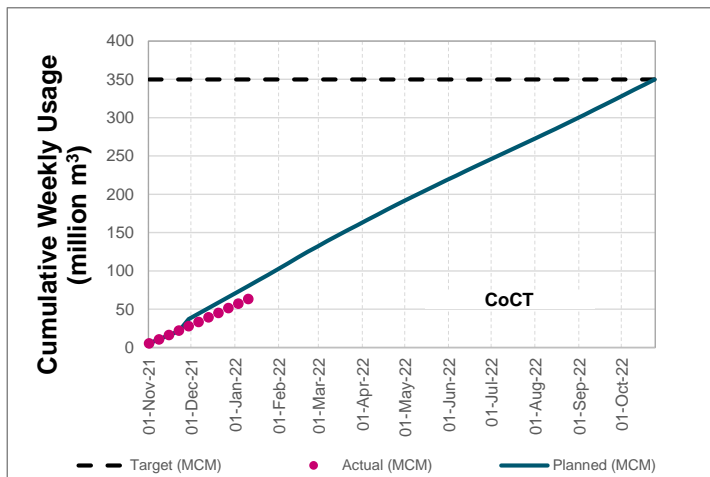
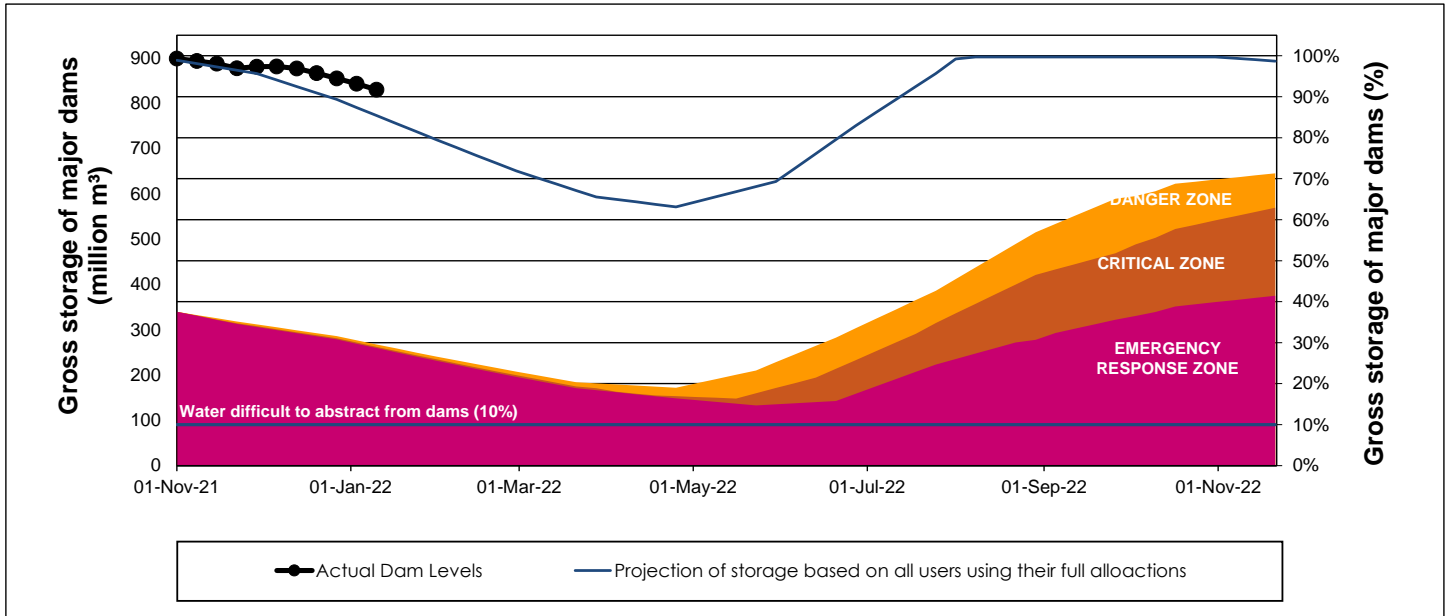
WCWSS Storage Record (2008 - Present)



WCWSS Comparative Storage Graph



WCWSS Dam Storage and Water Use Tracking



Water Stored in Minor Dams

Overall Percentage Full **71.4**

Weekly Change **-2.78**

MINOR DAMS	STORAGE						
	CAPACITY	%	%	%	%	%	%
	MI	10 January 2022	Previous week	2021	2020	2019	2018
ALEXANDRA (Table Mountain)	126	82.8	85.8	56.0	45.4	48.8	45.6
DE VILLIERS (Table Mountain)	243	60.7	58.9	59.6	99.0	44.3	80.2
HELY-HUTCHINSON (Table Mount)	925	43.1	42.9	39.2	64.9	98.3	100.3
KLEINPLAATS (Simon's Town)	1 368	81.2	85.2	83.2	69.4	75.5	54.0
LAND-EN-ZEEZICHT (Helderberg)	451	93.5	94.3	90.8	83.8	98.4	100.0
LEWIS GAY (Simon's Town)	182	80.0	70.0	61.1	17.5	44.9	95.4
VICTORIA (Table Mountain)	128	61.6	62.2	90.8	90.4	85.4	93.9
WOODHEAD (Table Mountain)	954	79.2	88.0	79.2	76.7	77.8	93.3
Total Stored	4 377	3124.5	3246.3	3068.2	3078.1	3457.8	3530.6
Percentages stored		71.4	74.2	70.1	70.3	79.0	80.7

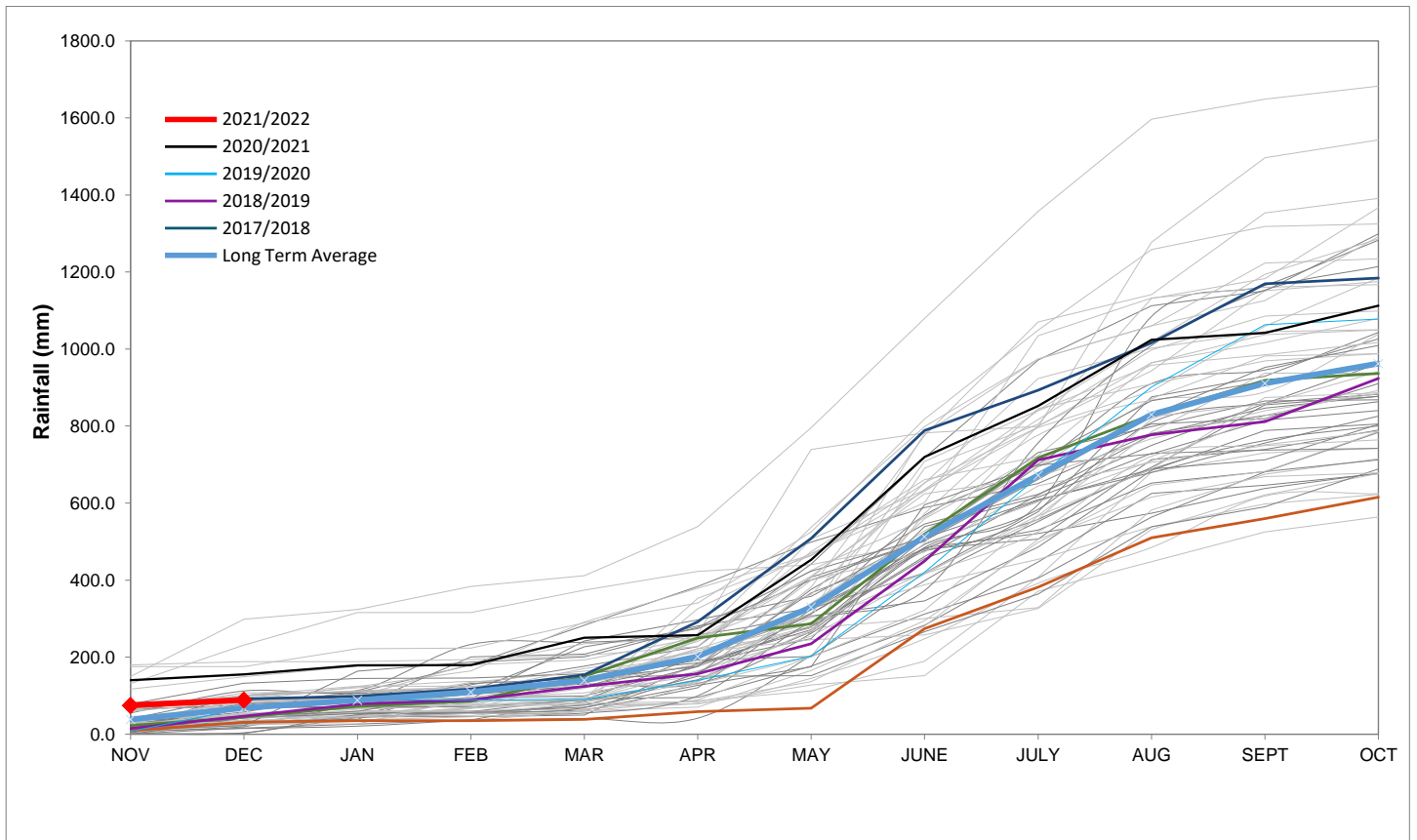
Rainfall Recorded

RAINFALL (mm)	04-Jan	05-Jan	06-Jan	07-Jan	08-Jan	09-Jan	10-Jan	Jan	
								Total*	LT Average
Blackheath Upper	0.0	0.0	0.0	0.0	0.0	0.0	0.0	1.0	15.3
Brooklands	0.0	0.0	0.0	0.0	0.0	0.0	0.0	4.0	27.7
Newlands	0.0	0.0	0.0	0.0	0.0	0.0	0.0	13.0	37.4
Steenbras	0.0	0.0	0.0	0.0	0.0	0.0	0.0	7.5	29.5
Table Mountain (Woodhead)	0.0	0.0	0.0	0.0	0.0	0.0		15.0	52.7
Theewaterskloof	0.0	0.0	0.0	0.0	0.0	0.0	0.0	0.0	24.9
Tygerberg	0.0	0.0	0.0	0.0	0.0	0.0	0.0	0.0	13.0
Voëlvlei	0.0	0.0	0.0	0.0	0.0	0.0	0.0	0.0	13.2
Wemmershoek	0.0	0.0	0.0	0.0	0.0	0.0	0.0	0.0	20.6
Wynberg	0.0	0.0	0.0	0.0	0.0	0.0	0.0	0.3	21.2

Notes: *Total/cummulative rainfall for month indicated above
LT: Long Term

Accumulated Monthly Rainfall at Wemmershoek

Note: Wemmershoek station used due to long record and mountainous location



Drinking Water Quality

SAMPLE PASS RATE

Month	Water Quality Compliance (%)	Target (%)
Oct-20	99.17	98
Nov-20	99.17	98
Dec-20	99.14	98
Jan-21	99.16	98
Feb-21	99.12	98
Mar-21	99.08	98
Apr-21	99.07	98
May-21	98.98	98
Jun-21	99.11	98
Jul-21	99.10	98
Aug-21	99.12	98
Sep-21	99.09	98
Oct-21	99.11	98
Nov-21	99.11	98
Dec-21	99.09	98

Notes:

This table shows CCT drinking water quality compliance according to the South African National Standard 241:2015. Compliance, measured against all prescribed chemical and microbiological components, consistently exceeds the very high CCT target of 98%. (Overall compliance percentages of continuous sampling and analysis are released on a monthly basis.