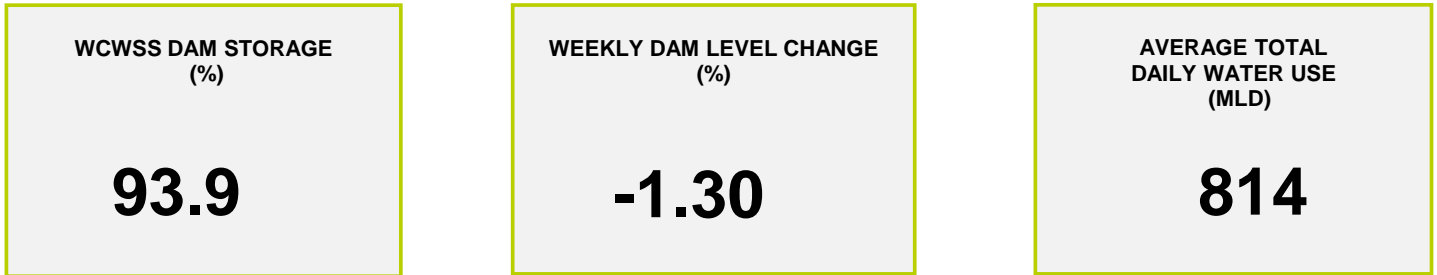
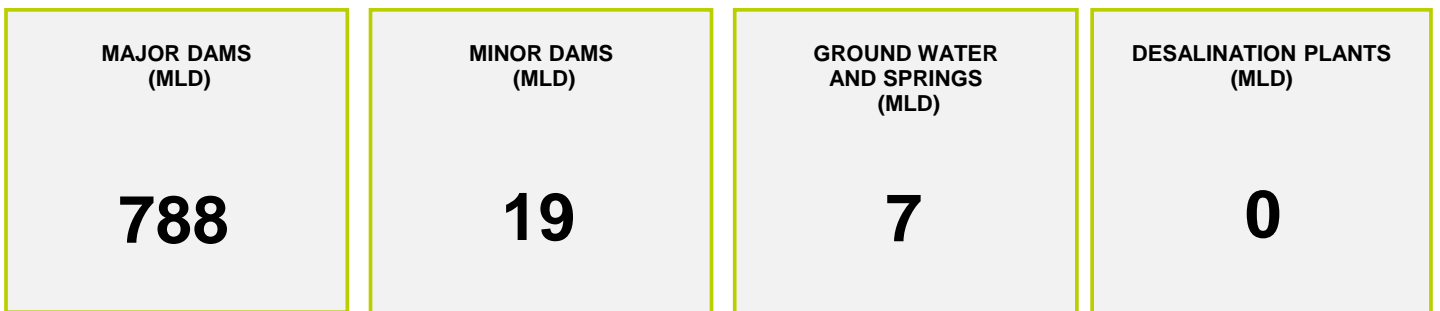




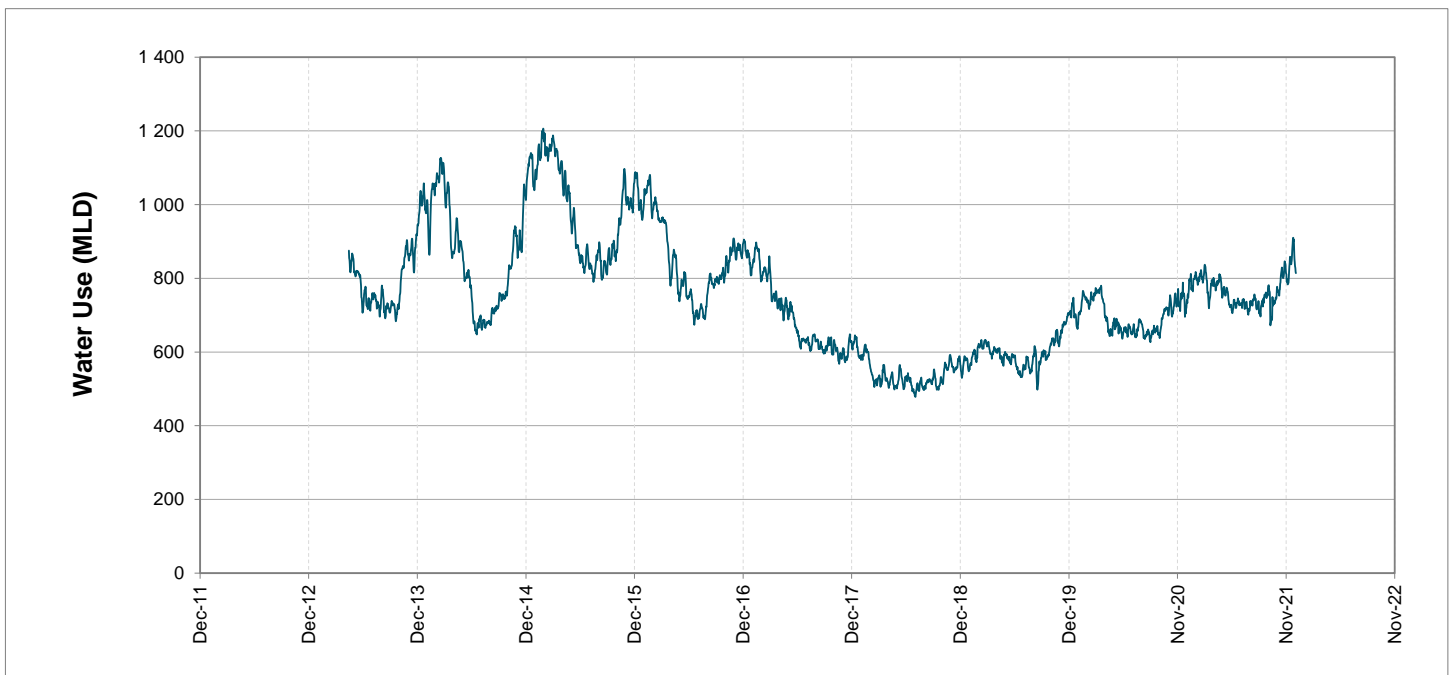
Headline Statistics



Water Production from Different Sources



Overall Water Usage Trend (2010 - Present)



WCWSS means Western Cape Water Supply System

MLD means million litres per day

More information on Water Saving and Restrictions is available on the City of Cape Town's 'ThinkWater' website

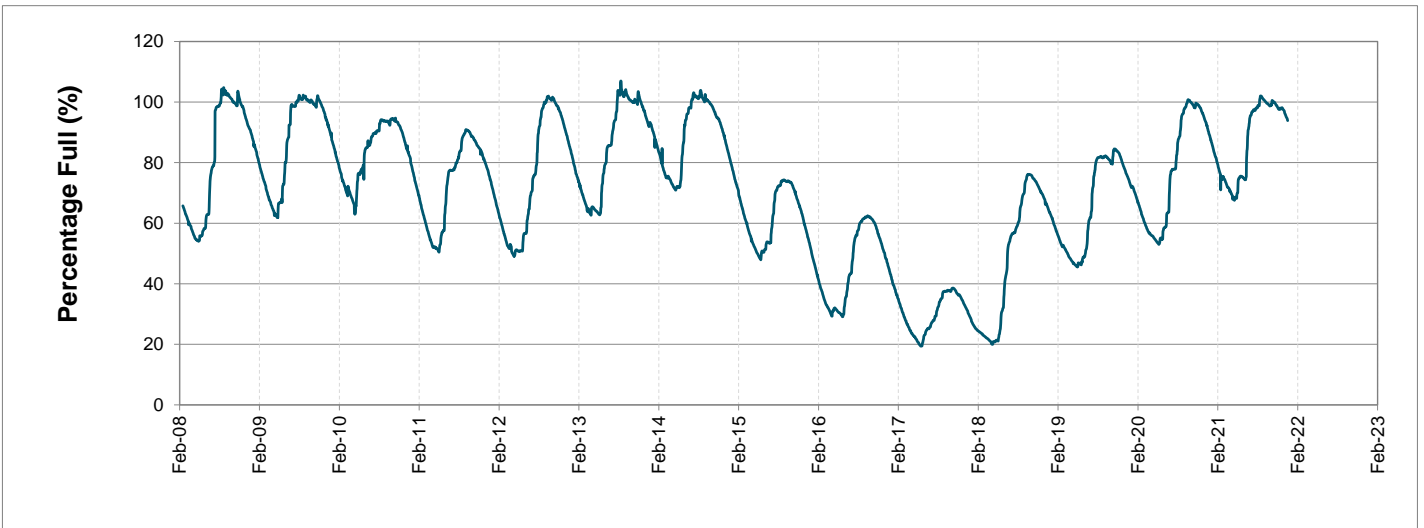
Water Stored in Major Dams (WCWSS)

Overall Percentage Full **93.9%**

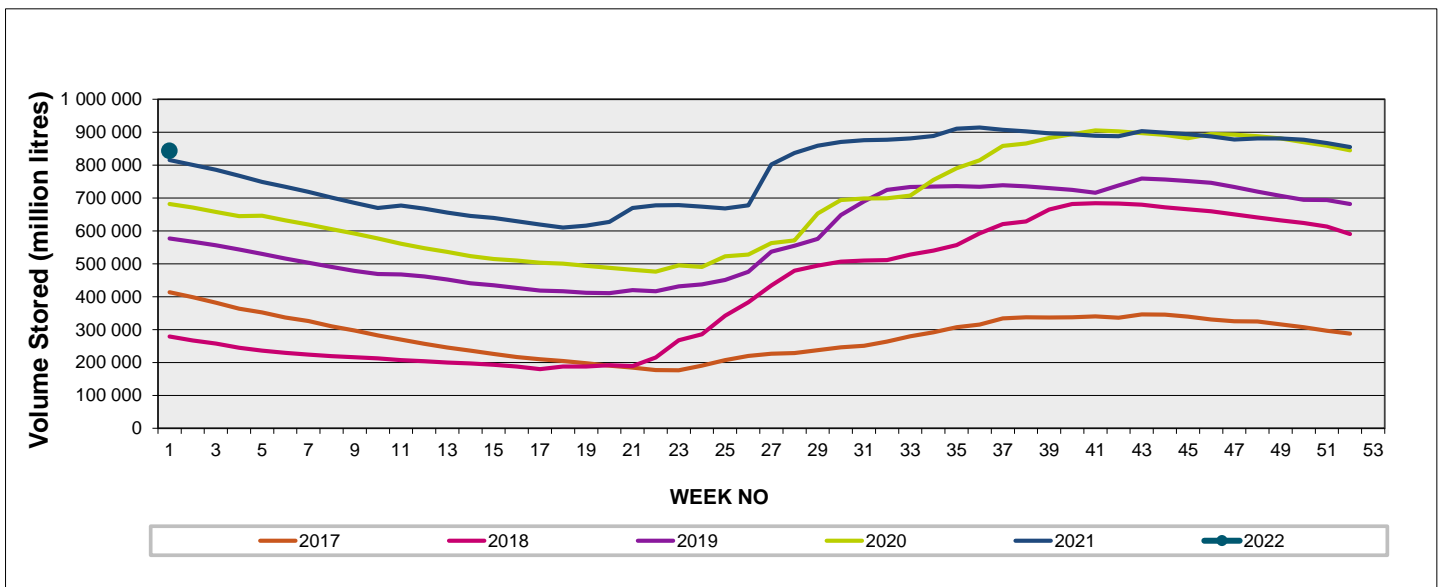
Weekly Change **-1.3%**

MAJOR DAMS (WCWSS)	STORAGE						
	CAPACITY	%	%	%	%	%	%
	MI	03 January 2022	Previous week	2021	2020	2019	2018
BERG RIVER	130 010	95.6	96.9	92.2	90.8	89.0	58.9
STEENBRAS LOWER	33 517	89.2	89.9	87.5	83.6	67.6	50.2
STEENBRAS UPPER	31 767	96.7	96.1	76.2	99.9	70.0	95.0
THEEWATERSKLOOF	480 188	95.8	97.1	93.3	66.7	50.4	17.4
VOËLVLEI	164 095	90.3	92.0	87.4	79.5	83.8	21.5
WEMMERSHOEK	58 644	85.4	87.2	91.5	80.0	77.3	52.2
TOTAL STORED	898 221	843 226	854 869	818 306	675 349	585 186	273 180
% STORAGE		93.9%	95.2%	91.1%	75.2%	65.1%	30.4%

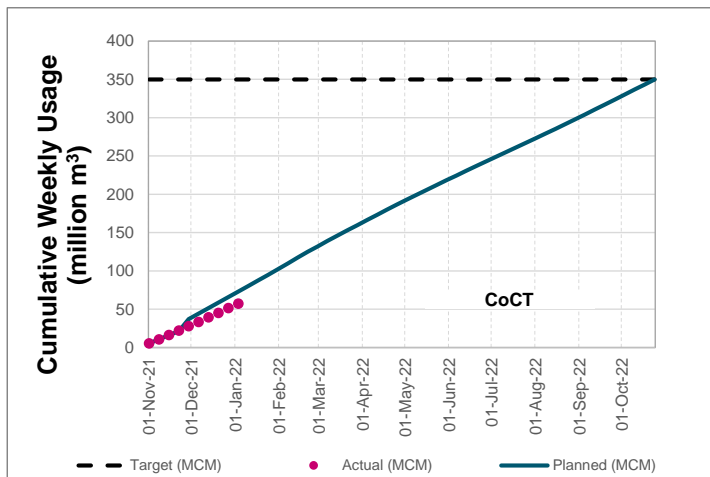
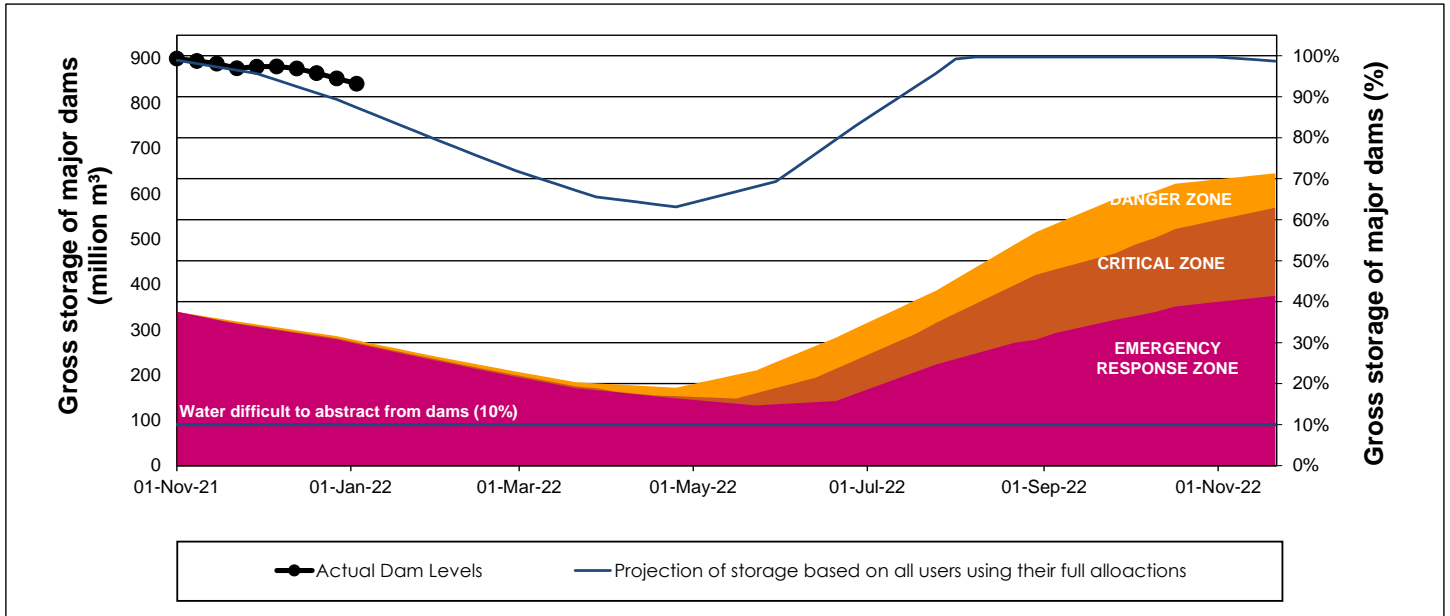
WCWSS Storage Record (2008 - Present)



WCWSS Comparative Storage Graph



WCWSS Dam Storage and Water Use Tracking



Water Stored in Minor Dams

Overall Percentage Full **74.2**

Weekly Change **-2.22**

MINOR DAMS	STORAGE						
	CAPACITY	%	%	%	%	%	%
	MI	03 January 2022	Previous week	2021	2020	2019	2018
ALEXANDRA (Table Mountain)	126	85.8	91.6	58.7	47.8	50.8	46.7
DE VILLIERS (Table Mountain)	243	58.9	55.4	67.0	98.4	50.6	80.0
HELY-HUTCHINSON (Table Mount)	925	42.9	50.0	3.6	75.7	99.0	97.3
KLEINPLAATS (Simon's Town)	1 368	85.2	91.5	87.2	72.0	77.7	55.2
LAND-EN-ZEEZICHT (Helderberg)	451	94.3	95.5	93.9	86.5	100.0	100.0
LEWIS GAY (Simon's Town)	182	70.0	61.8	53.0	18.8	53.2	93.6
VICTORIA (Table Mountain)	128	62.2	61.3	92.3	91.6	86.5	93.5
WOODHEAD (Table Mountain)	954	88.0	83.8	72.9	76.0	77.3	92.4
Total Stored	4 377	3246.3	3343.5	2757.4	3222.2	3528.0	3506.7
Percentages stored		74.2	76.4	63.0	73.6	80.6	80.1

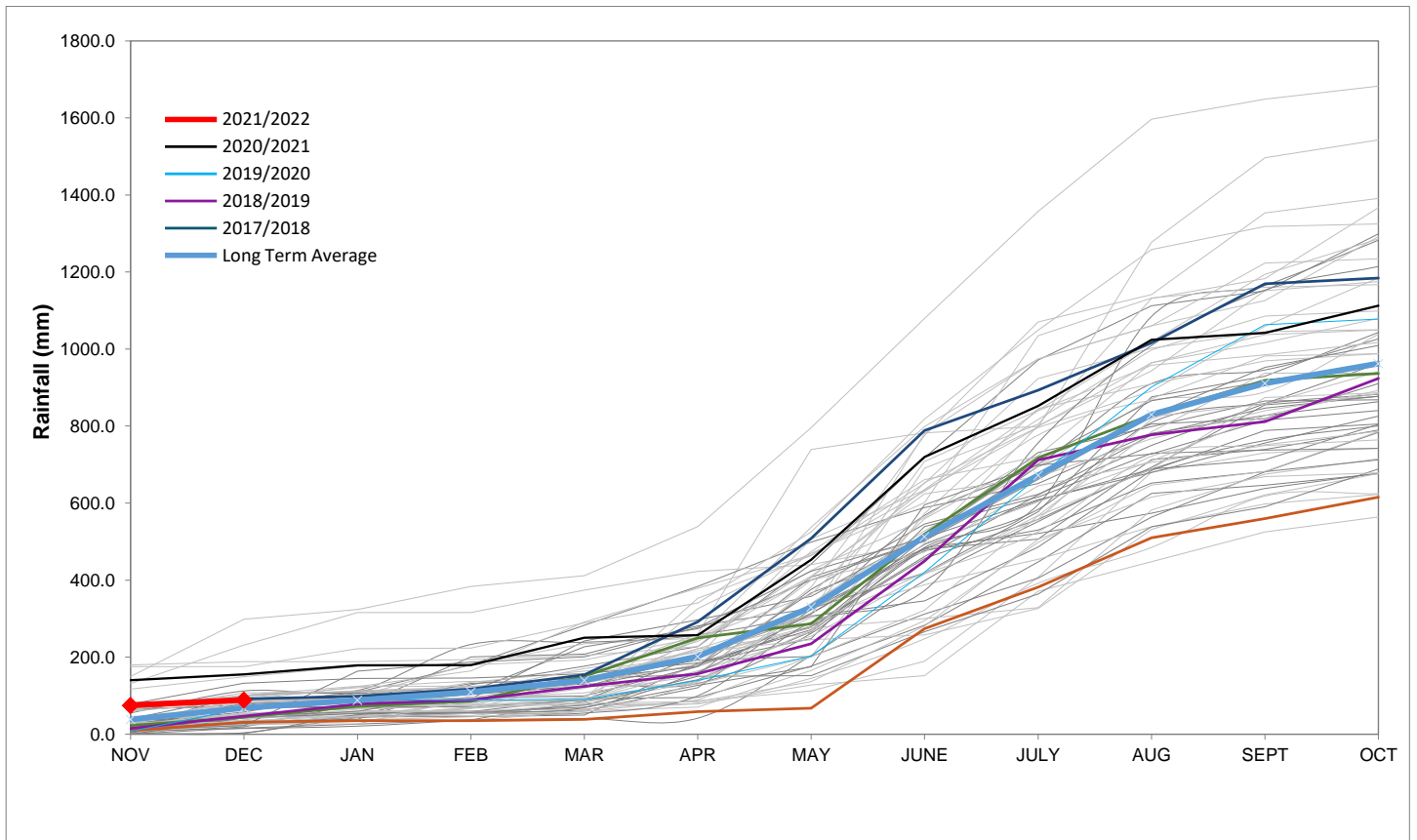
Rainfall Recorded

RAINFALL (mm)	28-Dec	29-Dec	30-Dec	31-Dec	01-Jan	02-Jan	03-Jan	Jan	
								Total*	LT Average
Blackheath Upper	0.0	0.0	0.0	0.0	1.0	0.0		1.0	15.3
Brooklands	0.0	0.0	0.0	4.0	0.0	0.0		4.0	27.7
Newlands	0.0	0.0	0.0	0.0	12.0	1.0		13.0	37.4
Steenbras	0.0	0.0	0.0	0.0	7.5	0.0		7.5	29.5
Table Mountain (Woodhead)	0.0	0.0	0.0	15.0	0.0			15.0	52.7
Theewaterskloof	0.0	0.0	0.0	0.0	0.0	0.0		0.0	24.9
Tygerberg	0.0	0.0	0.0	0.0	0.0	0.0		0.0	13.0
Voëlvlei	3.0	0.0	0.0	0.0	0.0	0.0		0.0	13.2
Wemmershoek	0.6	0.0	0.0	0.0	0.0	0.0		0.0	20.6
Wynberg	0.0	0.0	0.0	0.3	0.0	0.0		0.3	21.2

Notes: *Total/cummulative rainfall for month indicated above
LT: Long Term

Accumulated Monthly Rainfall at Wemmershoek

Note: Wemmershoek station used due to long record and mountainous location



Drinking Water Quality

SAMPLE PASS RATE

Month	Water Quality Compliance (%)	Target (%)
Sep-20	99.20	98
Oct-20	99.17	98
Nov-20	99.17	98
Dec-20	99.14	98
Jan-21	99.16	98
Feb-21	99.12	98
Mar-21	99.08	98
Apr-21	99.07	98
May-21	98.98	98
Jun-21	99.11	98
Jul-21	99.10	98
Aug-21	99.12	98
Sep-21	99.09	98
Oct-21	99.11	98
Nov-21	99.11	98

Notes:

This table shows CCT drinking water quality compliance according to the South African National Standard 241:2015. Compliance, measured against all prescribed chemical and microbiological components, consistently exceeds the very high CCT target of 98%. (Overall compliance percentages of continuous sampling and analysis are released on a monthly basis.