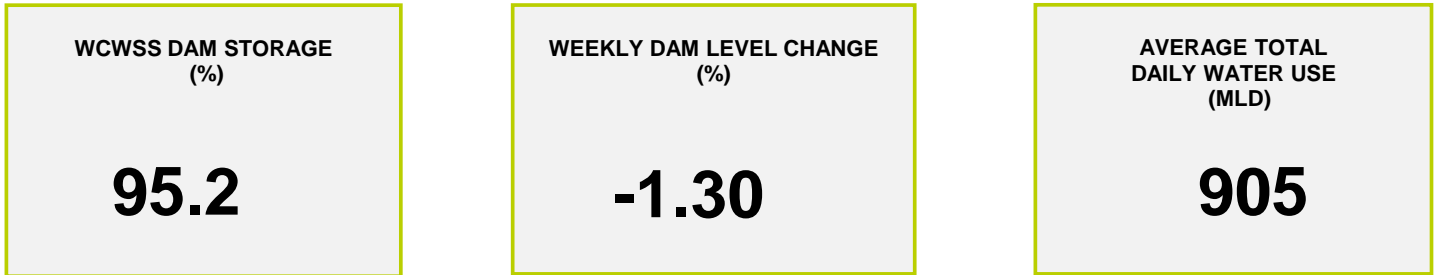
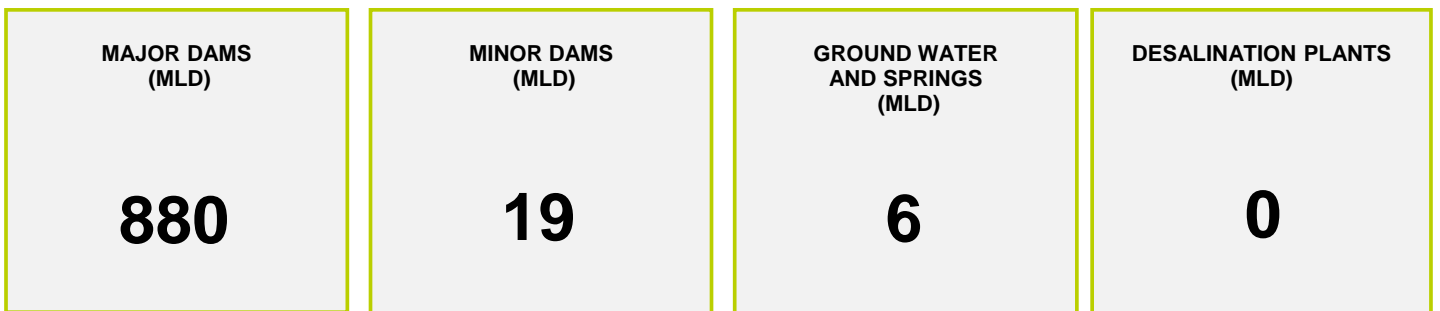




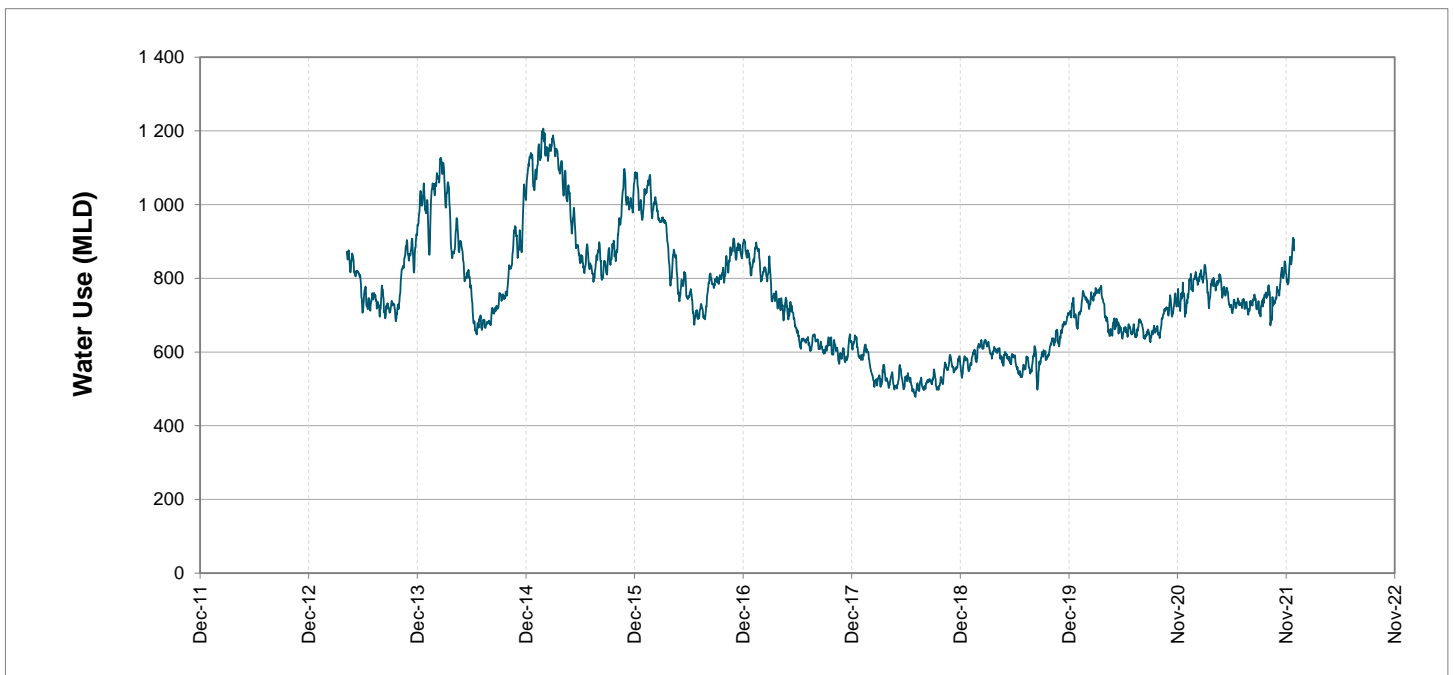
Headline Statistics



Water Production from Different Sources



Overall Water Usage Trend (2010 - Present)



WCWSS means Western Cape Water Supply System

MLD means million litres per day

More information on Water Saving and Restrictions is available on the City of Cape Town's 'ThinkWater' website

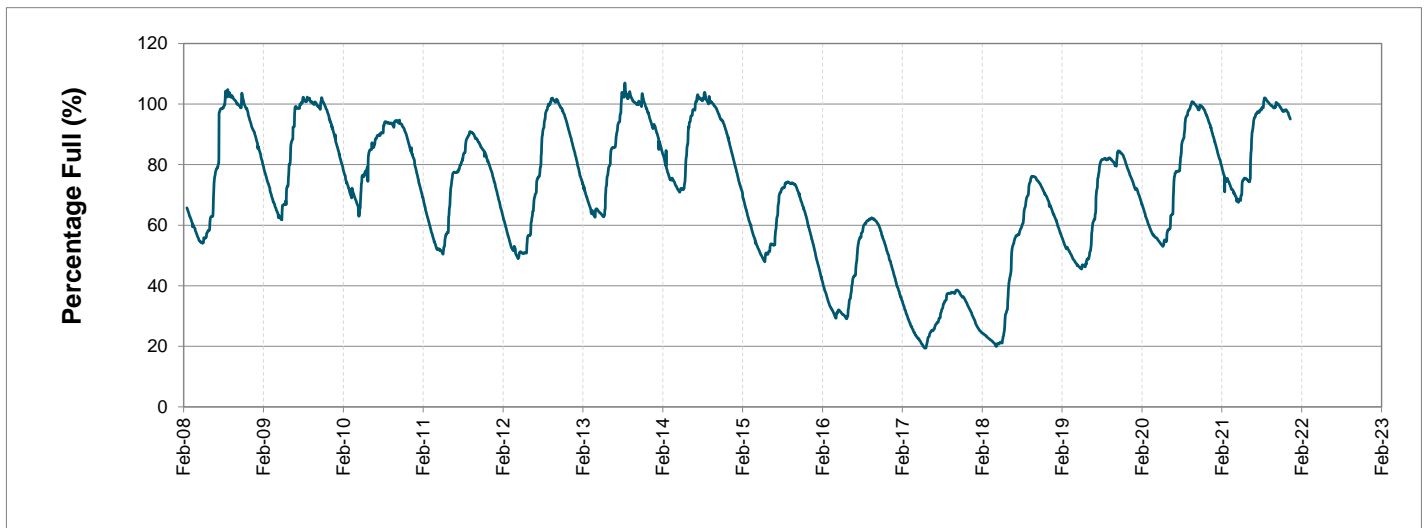
Water Stored in Major Dams (WCWSS)

Overall Percentage Full **95.2%**

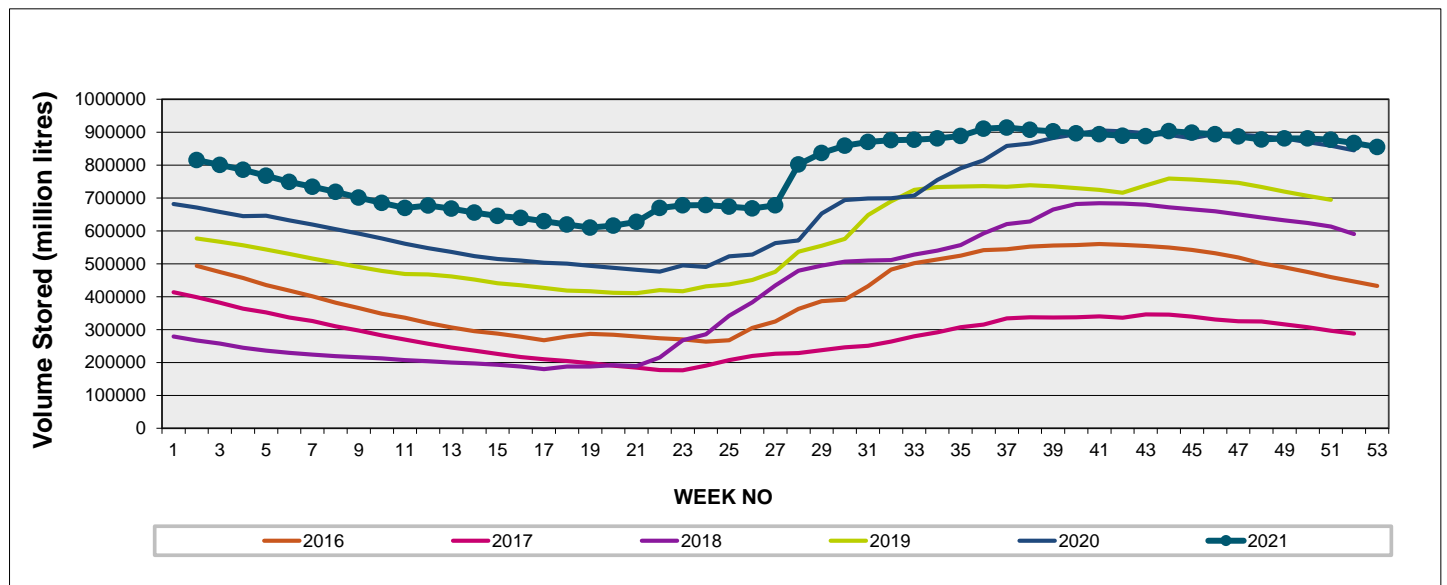
Weekly Change **-1.3%**

MAJOR DAMS (WCWSS)	STORAGE						
	CAPACITY	%	%	%	%	%	%
	MI	27 December 2021	Previous week	2020	2019	2018	2017
BERG RIVER	130 010	96.9	98.6	94.6	92.5	90.8	60.1
STEENBRAS LOWER	33 517	89.9	91.7	89.6	86.1	69.7	51.9
STEENBRAS UPPER	31 767	96.1	96.6	76.8	100.2	70.3	98.0
THEEWATERSKLOOF	480 188	97.1	98.1	95.3	67.7	51.4	19.0
VOËLVLEI	164 095	92.0	93.6	89.1	80.1	85.0	22.4
WEMMERSHOEK	58 644	87.2	89.1	93.4	81.9	79.2	52.0
TOTAL STORED	898 221	854 869	866 619	835 915	685 398	596 495	285 106
% STORAGE		95.2%	96.5%	93.1%	76.3%	66.4%	31.7%

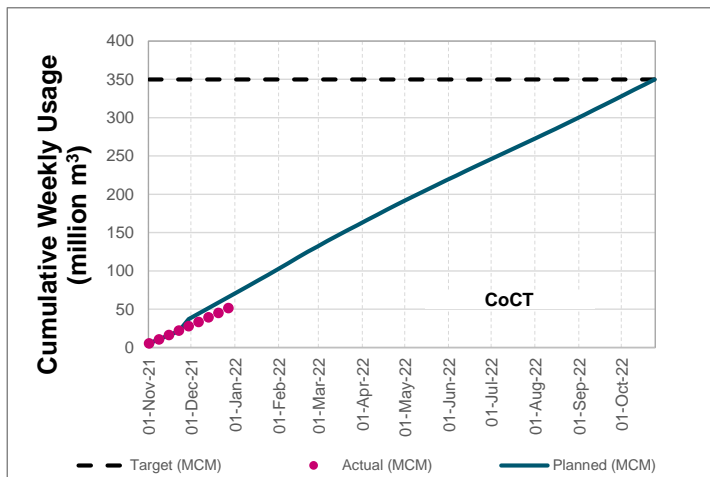
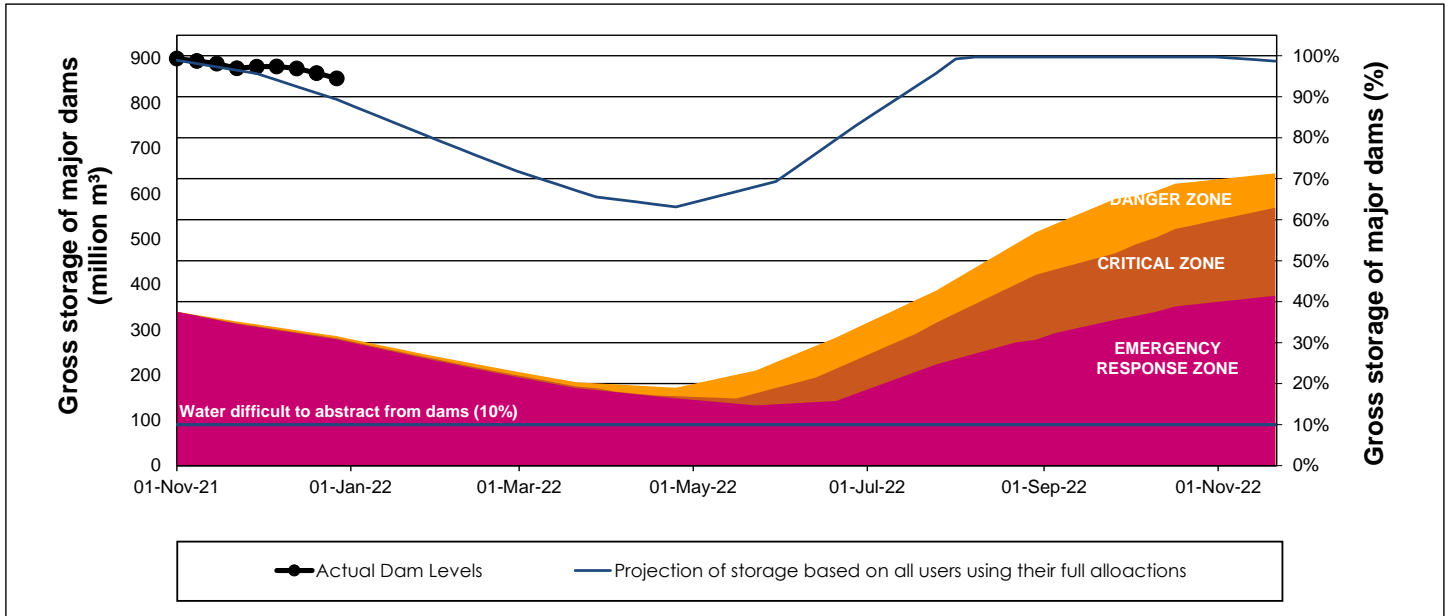
WCWSS Storage Record (2008 - Present)



WCWSS Comparative Storage Graph



WCWSS Dam Storage and Water Use Tracking



Water Stored in Minor Dams

Overall Percentage Full **76.4**

Weekly Change **-3.17**

MINOR DAMS	STORAGE						
	CAPACITY	%	%	%	%	%	%
	MI	27 December 2021	Previous week	2020	2019	2018	2017
ALEXANDRA (Table Mountain)	126	91.6	86.2	61.7	49.9	52.6	49.0
DE VILLIERS (Table Mountain)	243	55.4	56.2	72.4	100.5	55.2	79.9
HELY-HUTCHINSON (Table Mount)	925	50.0	78.2	52.3	96.1	98.3	96.9
KLEINPLAATS (Simon's Town)	1 368	91.5	93.6	90.4	74.6	80.2	55.7
LAND-EN-ZEEZICHT (Helderberg)	451	95.5	98.2	94.5	91.5	100.0	100.0
LEWIS GAY (Simon's Town)	182	61.8	67.0	59.8	22.6	59.1	90.9
VICTORIA (Table Mountain)	128	61.3	71.4	93.5	93.1	86.8	95.8
WOODHEAD (Table Mountain)	954	83.8	65.1	67.2	61.5	75.8	91.2
Total Stored	4 377	3343.5	3482.3	3226.5	3348.2	3563.5	3500.1
Percentages stored		76.4	79.6	73.7	76.5	81.4	80.0

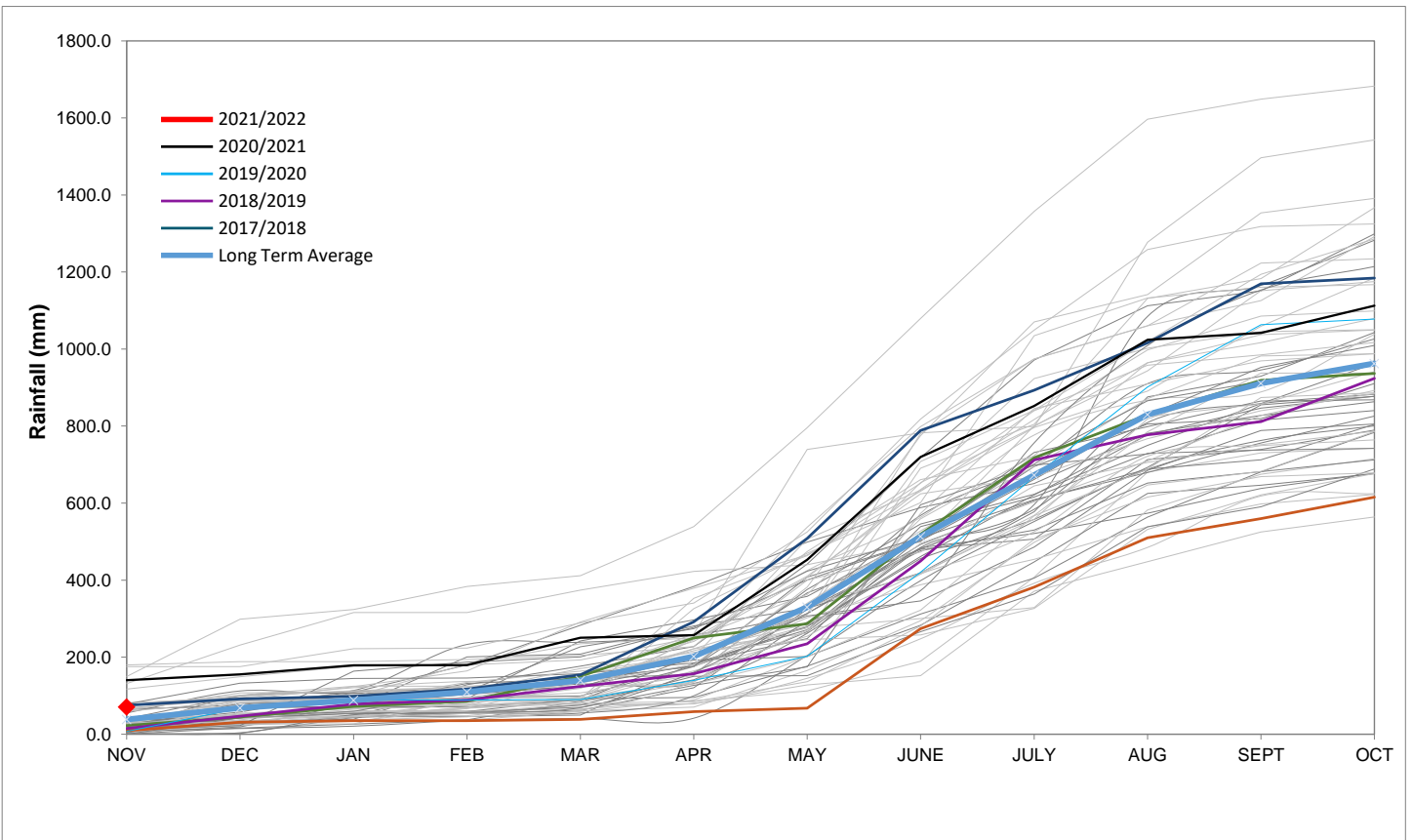
Rainfall Recorded

RAINFALL (mm)	21-Dec	22-Dec	23-Dec	24-Dec	25-Dec	26-Dec	27-Dec	Dec	
								Total*	LT Average
Blackheath Upper	0.0	0.0	0.0	0.0	0.0	0.0	6.0	10.0	13.0
Brooklands	0.0	0.0	0.0	0.0	0.0	0.0	8.0	32.0	26.9
Newlands	0.0	0.0	0.0	0.0	0.0	0.0	11.8	32.3	47.9
Steenbras	0.0	0.0	0.0	0.0	0.0	0.0	26.0	42.0	36.4
Table Mountain (Woodhead)	0.0	0.0	0.0	0.0	0.0	1.5		97.5	63.0
Theewaterskloof	0.0	4.2	3.1	0.0	2.0	0.0	2.7	41.4	20.3
Tygerberg	0.0	0.0	0.0	0.0	0.0	0.0	0.0	8.3	10.2
Voëlvlei	0.0	0.0	0.0	0.0	0.0	0.0	0.0	38.5	13.0
Wemmershoek	0.0	0.0	0.0	0.0	0.0	0.0	1.5	13.8	26.7
Wynberg	0.0	0.0	0.0	0.0	0.0	0.0	4.5	27.5	22.0

Notes: *Total/cummulative rainfall for month indicated above
LT: Long Term

Accumulated Monthly Rainfall at Wemmershoek

Note: Wemmershoek station used due to long record and mountainous location



Drinking Water Quality

SAMPLE PASS RATE

Month	Water Quality Compliance (%)	Target (%)
Sep-20	99.20	98
Oct-20	99.17	98
Nov-20	99.17	98
Dec-20	99.14	98
Jan-21	99.16	98
Feb-21	99.12	98
Mar-21	99.08	98
Apr-21	99.07	98
May-21	98.98	98
Jun-21	99.11	98
Jul-21	99.10	98
Aug-21	99.12	98
Sep-21	99.09	98
Oct-21	99.11	98
Nov-21	99.11	98

Notes:

This table shows CCT drinking water quality compliance according to the South African National Standard 241:2015. Compliance, measured against all prescribed chemical and microbiological components, consistently exceeds the very high CCT target of 98%. (Overall compliance percentages of continuous sampling and analysis are released on a monthly basis.