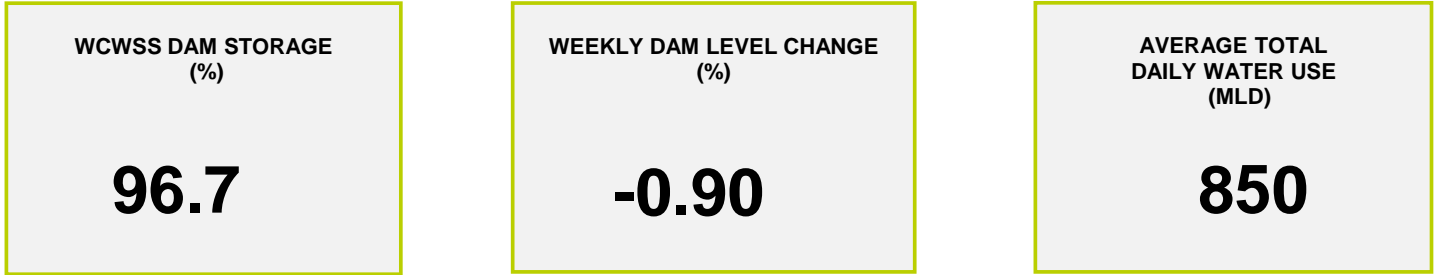
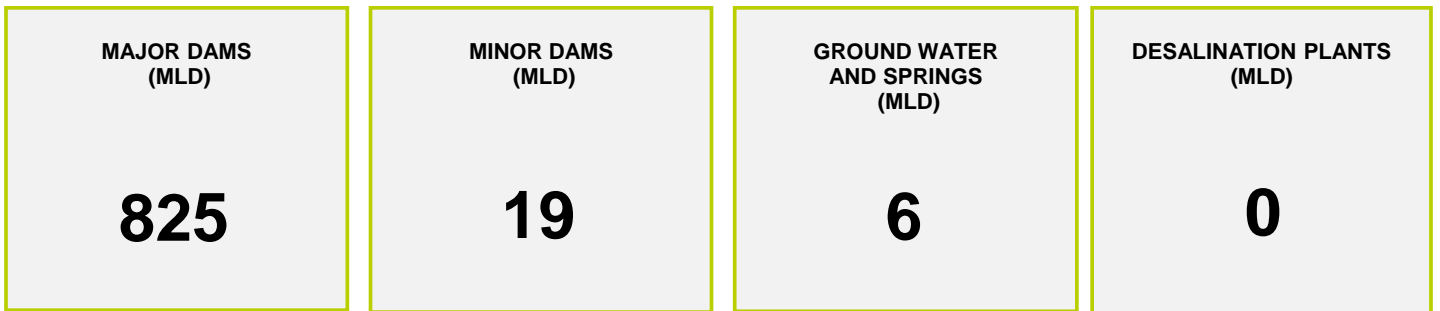




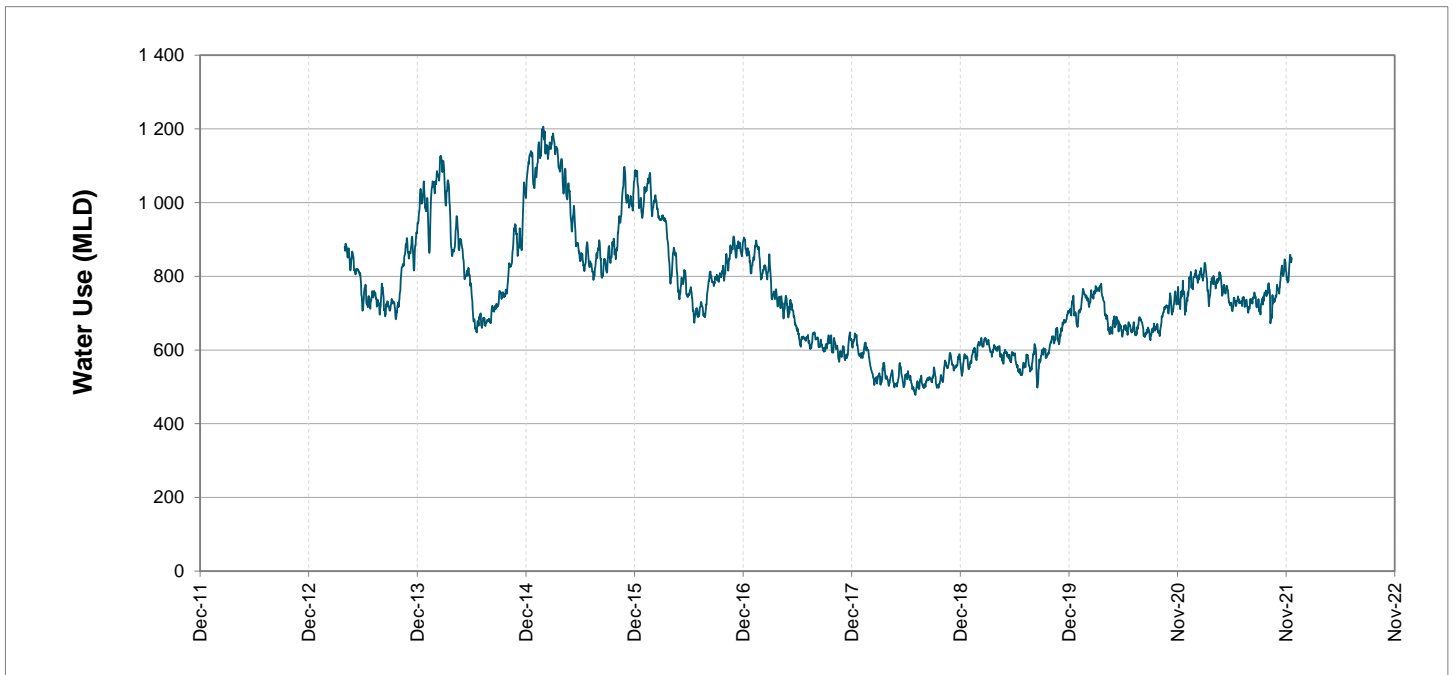
Headline Statistics



Water Production from Different Sources



Overall Water Usage Trend (2010 - Present)



WCWSS means Western Cape Water Supply System

MLD means million litres per day

More information on Water Saving and Restrictions is available on the City of Cape Town's 'ThinkWater' website

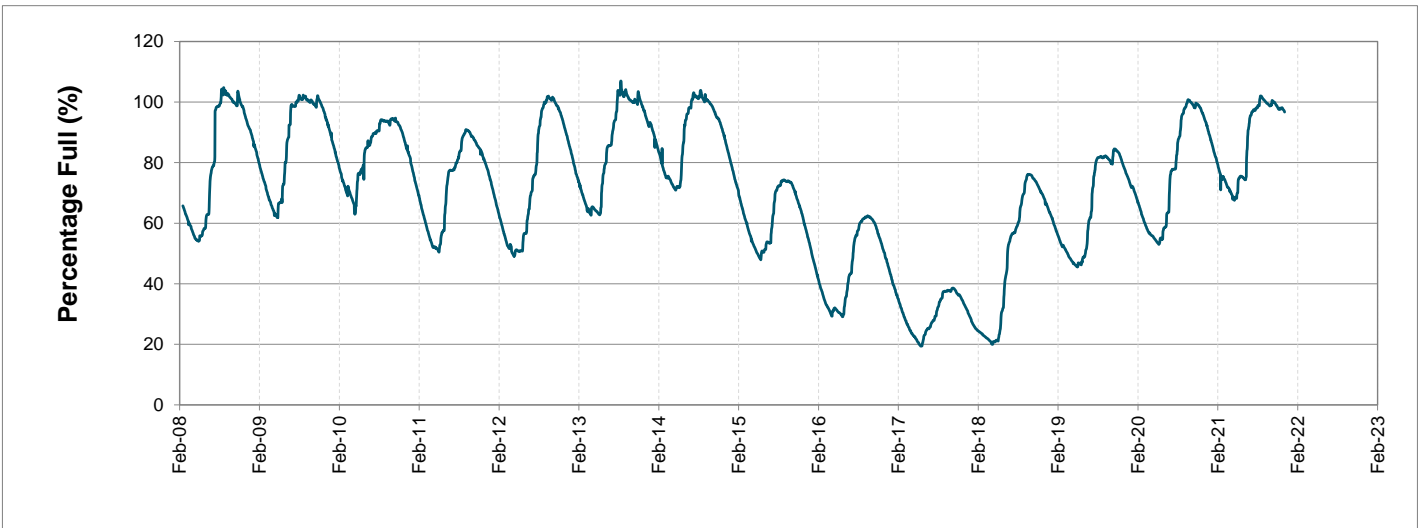
Water Stored in Major Dams (WCWSS)

Overall Percentage Full **96.7%**

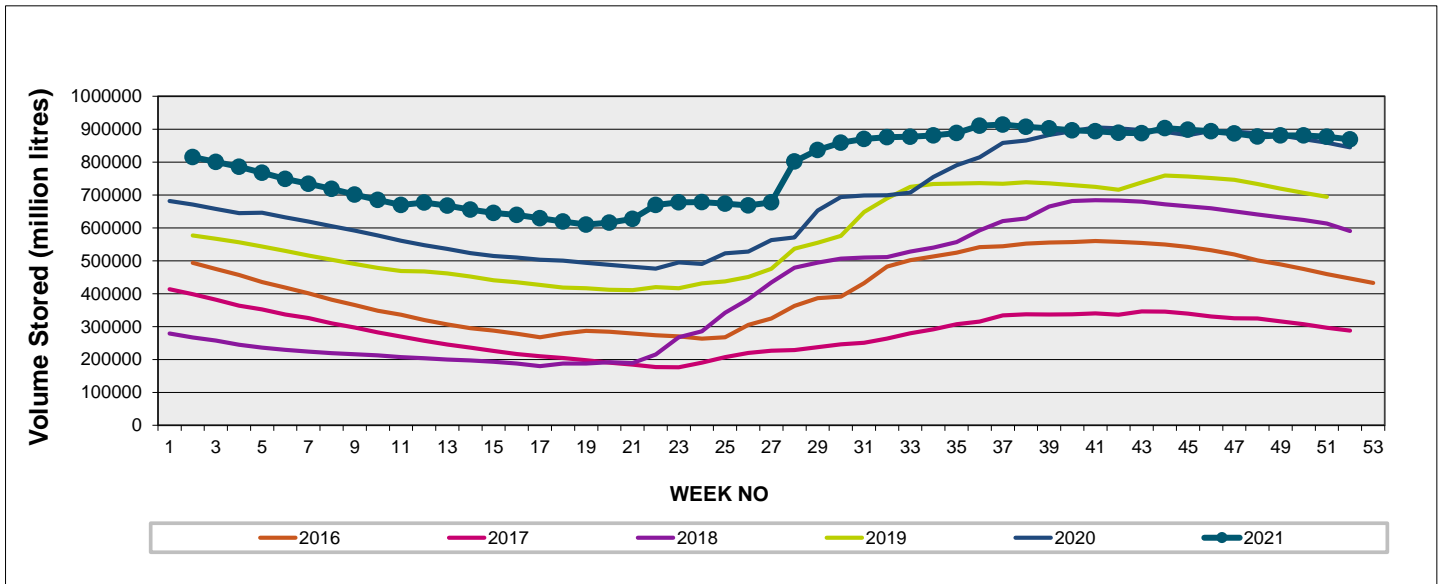
Weekly Change **-0.9%**

MAJOR DAMS (WCWSS)	STORAGE						
	CAPACITY	%	%	%	%	%	%
	MI	20 December 2021	Previous week	2020	2019	2018	2017
BERG RIVER	130 010	98.6	100.1	95.8	93.9	92.5	61.7
STEENBRAS LOWER	33 517	91.7	91.6	91.1	86.9	71.7	53.3
STEENBRAS UPPER	31 767	96.6	98.4	79.5	100.3	70.9	99.0
THEEWATERSKLOOF	480 188	98.5	99.2	96.1	69.0	52.5	19.9
VOËLVLEI	164 095	93.6	94.6	90.6	82.6	86.8	23.6
WEMMERSHOEK	58 644	89.1	90.5	95.0	83.7	80.8	51.8
TOTAL STORED	898 221	868 632	876 627	846 191	698 737	608 478	294 182
% STORAGE		96.7%	97.6%	94.2%	77.8%	67.7%	32.8%

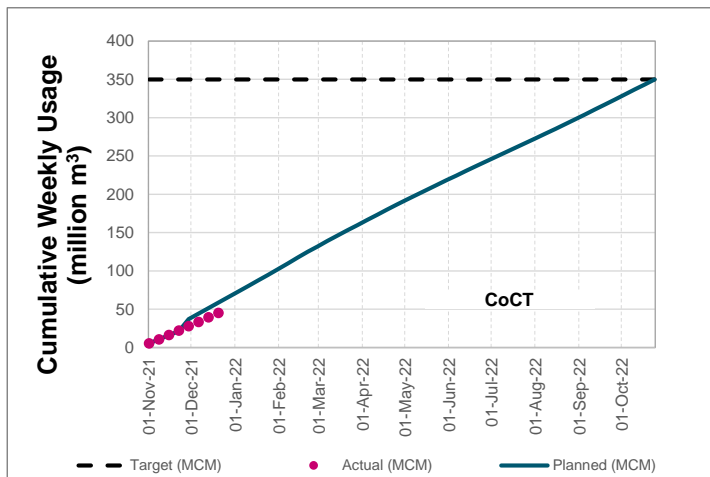
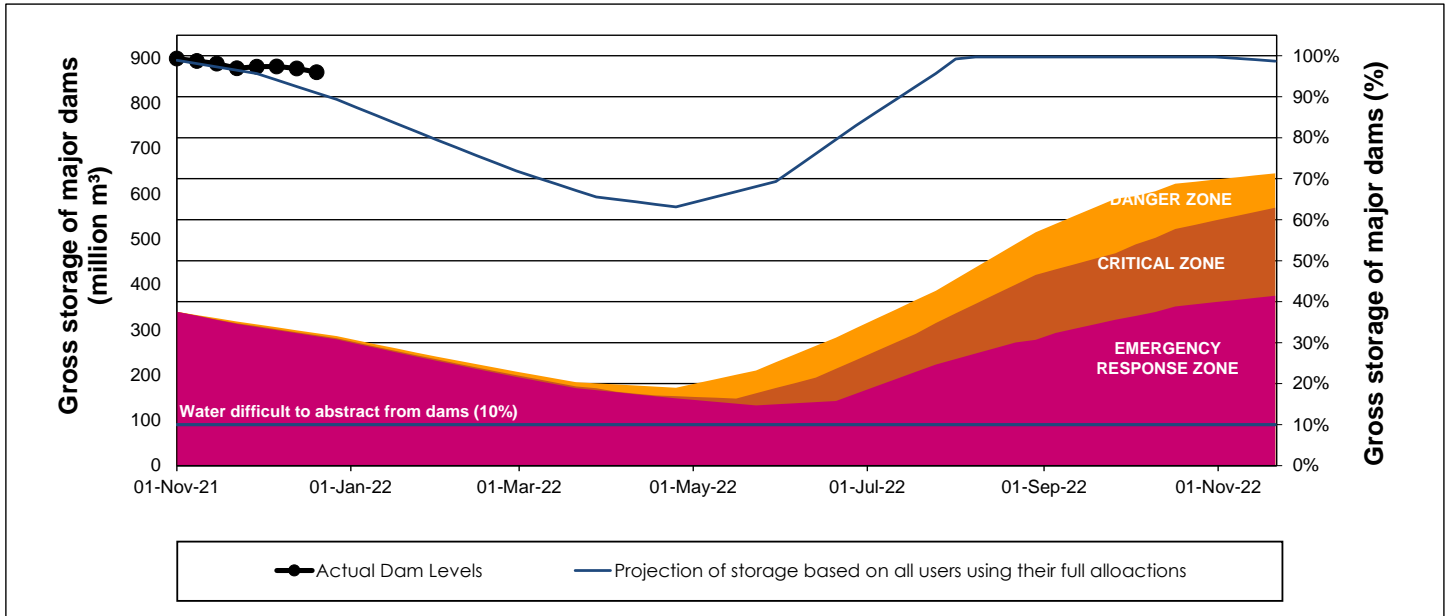
WCWSS Storage Record (2008 - Present)



WCWSS Comparative Storage Graph



WCWSS Dam Storage and Water Use Tracking



Water Stored in Minor Dams

Overall Percentage Full **79.6**

Weekly Change **-2.00**

MINOR DAMS	STORAGE						
	CAPACITY	%	%	%	%	%	%
	MI	20 December 2021	Previous week	2020	2019	2018	2017
ALEXANDRA (Table Mountain)	126	86.2	68.0	64.1	51.9	55.0	51.9
DE VILLIERS (Table Mountain)	243	56.2	55.0	77.8	99.1	62.9	80.5
HELY-HUTCHINSON (Table Mount)	925	78.2	87.1	58.5	96.4	99.7	98.1
KLEINPLAATS (Simon's Town)	1 368	93.6	94.7	93.0	76.4	82.2	57.2
LAND-EN-ZEEZICHT (Helderberg)	451	98.2	98.3	95.5	91.2	100.0	100.0
LEWIS GAY (Simon's Town)	182	67.0	71.5	70.8	26.7	66.4	89.1
VICTORIA (Table Mountain)	128	71.4	91.6	93.1	92.3	88.9	97.3
WOODHEAD (Table Mountain)	954	65.1	63.4	60.9	70.9	75.5	91.6
Total Stored	4 377	3482.3	3569.6	3295.8	3467.5	3636.4	3538.8
Percentages stored		79.6	81.6	75.3	79.2	83.1	80.8

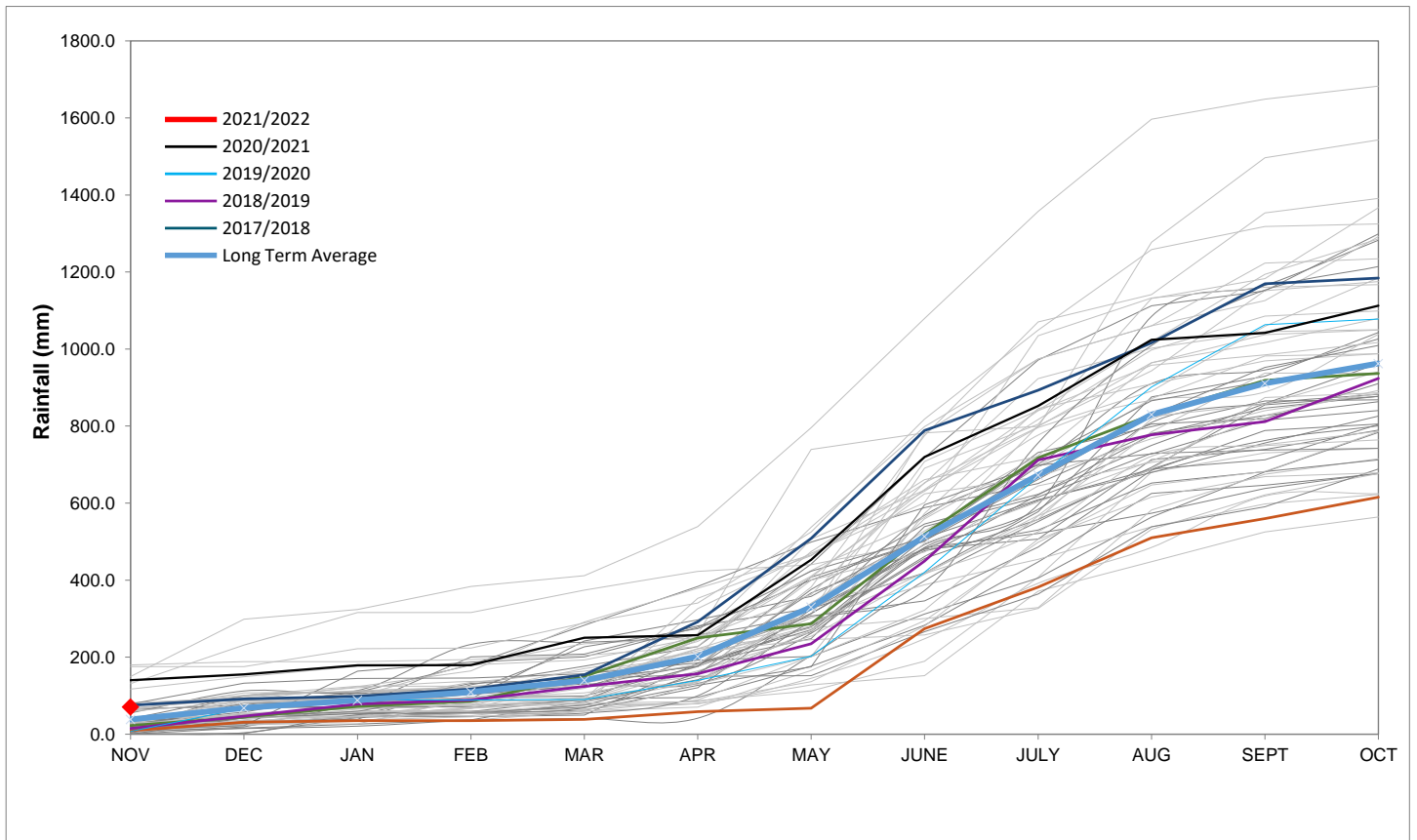
Rainfall Recorded

RAINFALL (mm)	14-Dec	15-Dec	16-Dec	17-Dec	18-Dec	19-Dec	20-Dec	Dec	
								Total*	LT Average
Blackheath Upper	0.0	0.0	0.0	0.0	0.0	0.0	0.0	4.0	13.0
Brooklands	0.0	0.0	0.0	0.0	0.0	0.0	0.0	24.0	26.9
Newlands	0.0	1.5	0.0	0.0	0.0	0.0	0.0	20.5	47.9
Steenbras	0.0	5.5	0.0	0.0	0.0	0.0	0.0	16.0	36.4
Table Mountain (Woodhead)	0.0	2.0	0.0	0.0	0.0	0.0	0.0	96.0	63.0
Theewaterskloof	0.0	2.0	0.0	0.0	0.0	0.0	0.0	29.4	20.3
Tygerberg	0.0	0.0	0.0	0.0	0.0	0.0	0.0	8.3	10.2
Voëlvlei	0.0	0.5	0.0	0.0	0.0	0.0	0.0	38.5	13.0
Wemmershoek	0.0	0.0	0.0	0.0	0.0	0.0	0.0	12.3	26.7
Wynberg	0.0	0.0	0.0	0.0	0.0	0.0	0.0	23.0	22.0

Notes: *Total/cummulative rainfall for month indicated above
LT: Long Term

Accumulated Monthly Rainfall at Wemmershoek

Note: Wemmershoek station used due to long record and mountainous location



Drinking Water Quality

SAMPLE PASS RATE

Month	Water Quality Compliance (%)	Target (%)
Sep-20	99.20	98
Oct-20	99.17	98
Nov-20	99.17	98
Dec-20	99.14	98
Jan-21	99.16	98
Feb-21	99.12	98
Mar-21	99.08	98
Apr-21	99.07	98
May-21	98.98	98
Jun-21	99.11	98
Jul-21	99.10	98
Aug-21	99.12	98
Sep-21	99.09	98
Oct-21	99.11	98
Nov-21	99.11	98

Notes:

This table shows CCT drinking water quality compliance according to the South African National Standard 241:2015. Compliance, measured against all prescribed chemical and microbiological components, consistently exceeds the very high CCT target of 98%. (Overall compliance percentages of continuous sampling and analysis are released on a monthly basis.