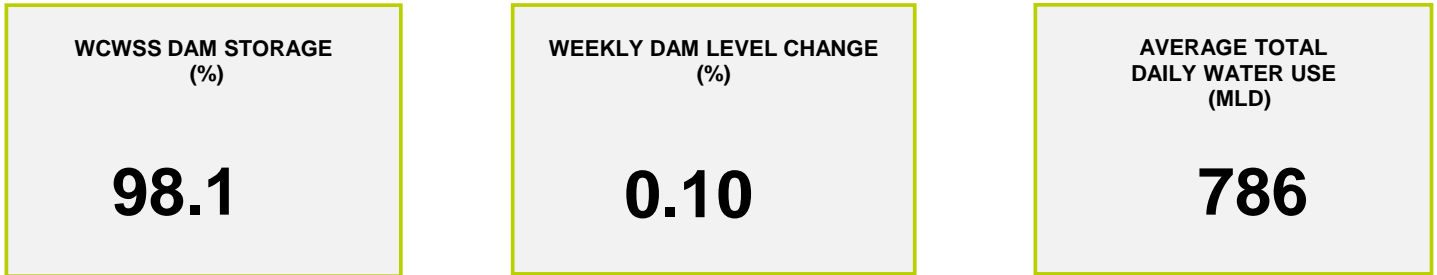
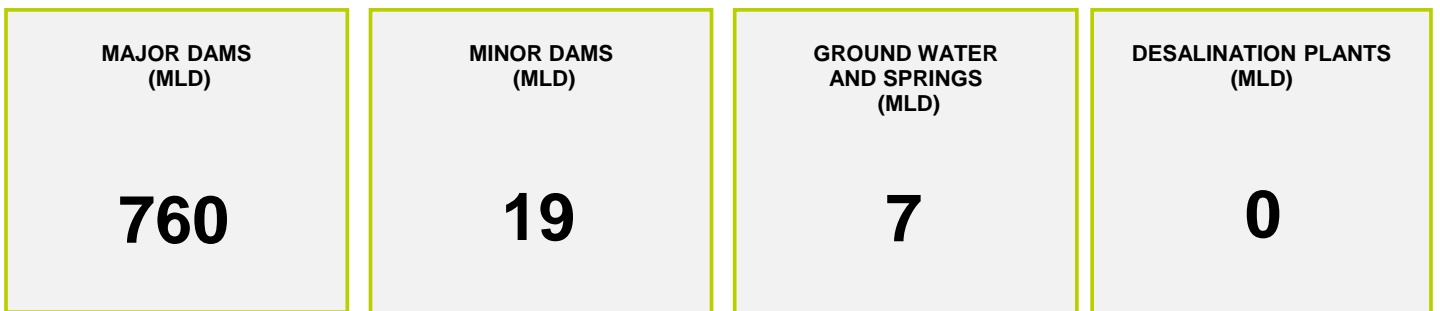




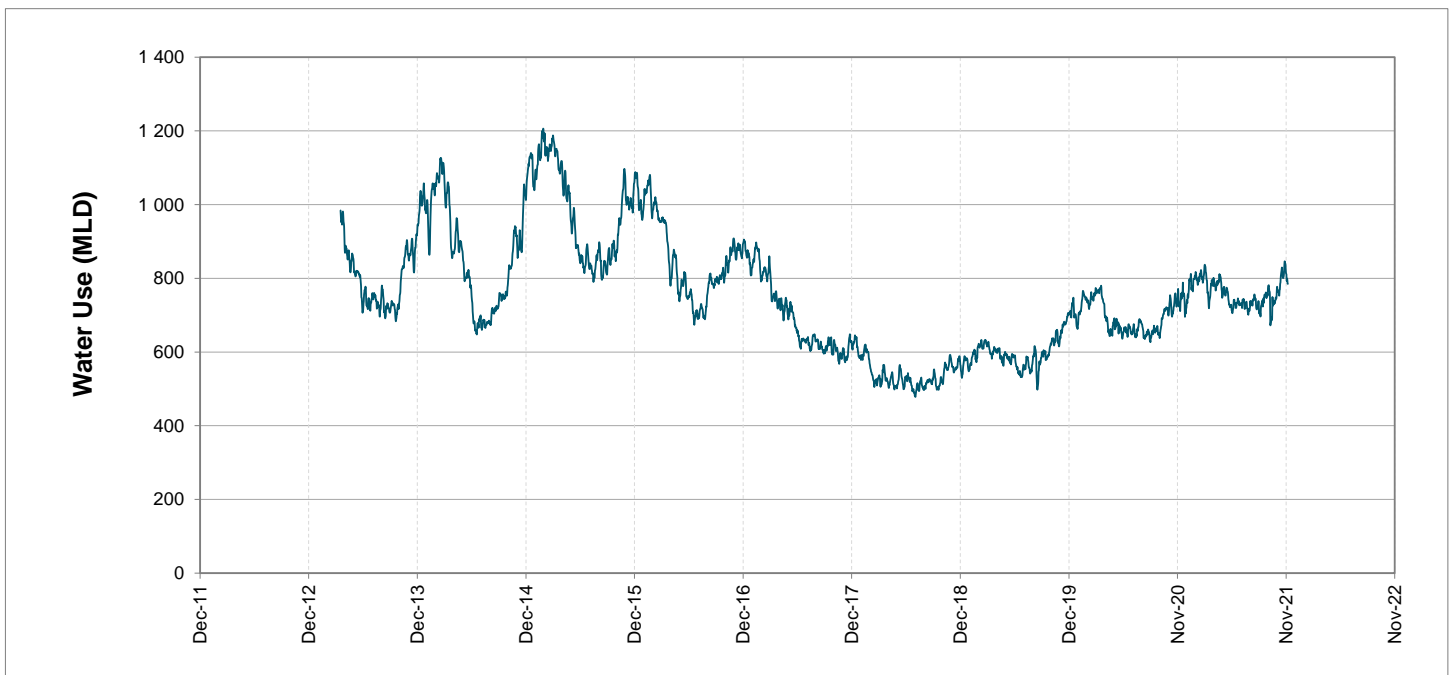
Headline Statistics



Water Production from Different Sources



Overall Water Usage Trend (2010 - Present)



WCWSS means Western Cape Water Supply System

MLD means million litres per day

More information on Water Saving and Restrictions is available on the City of Cape Town's 'ThinkWater' website

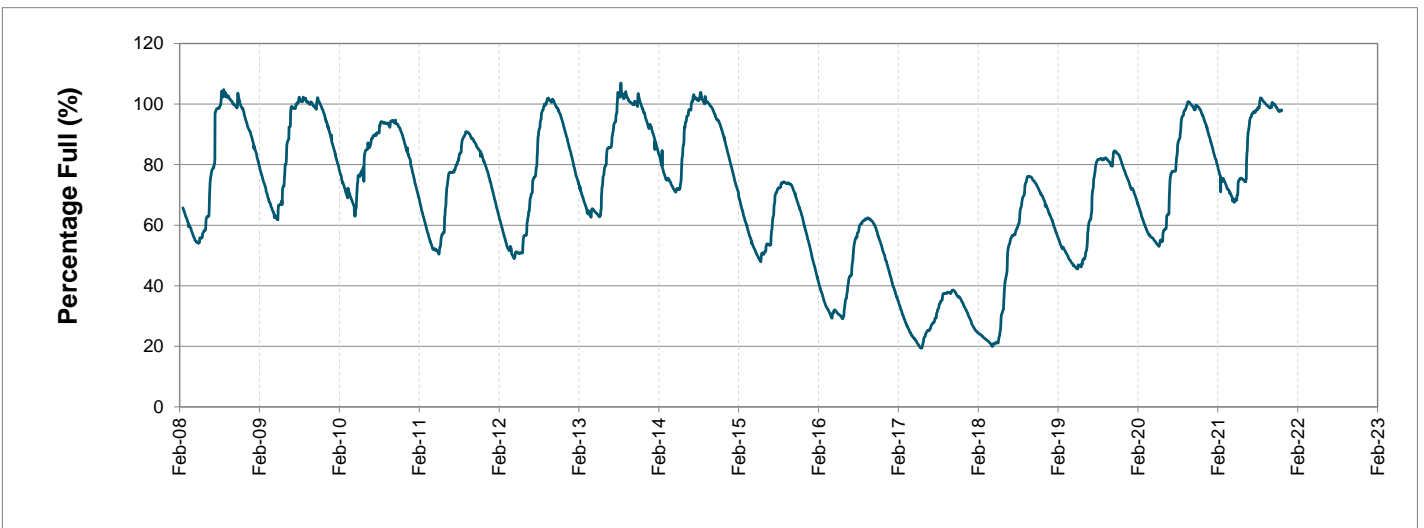
Water Stored in Major Dams (WCWSS)

Overall Percentage Full **98.1%**

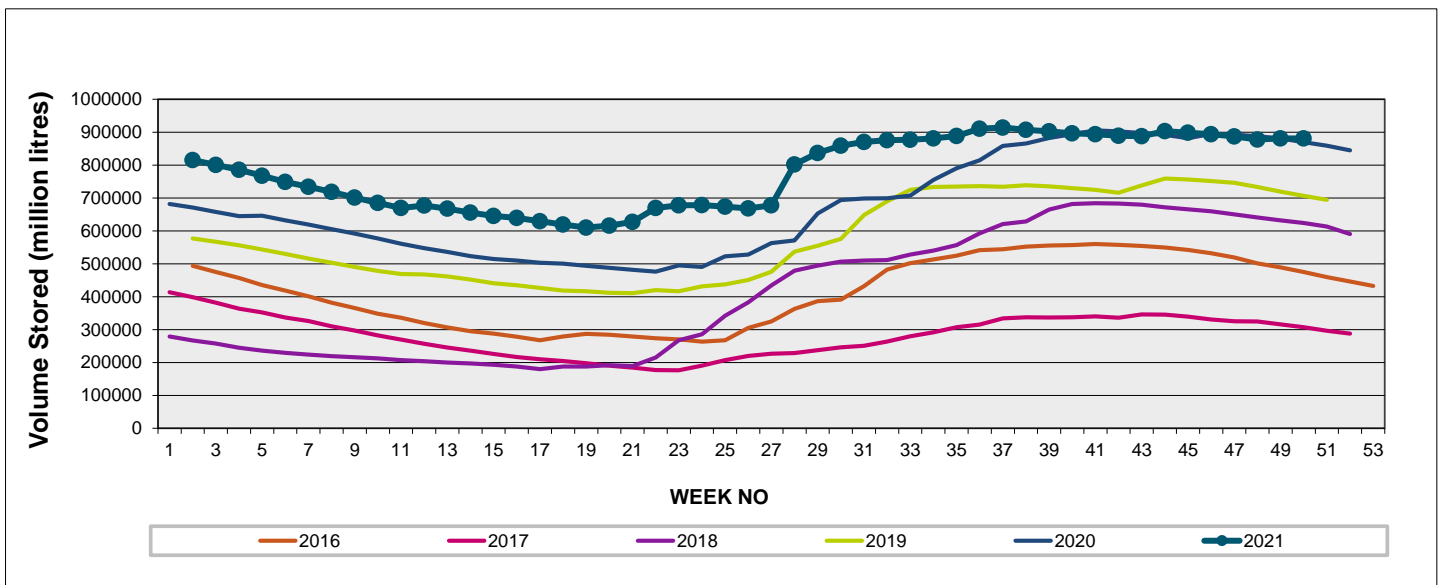
Weekly Change **0.1%**

MAJOR DAMS (WCWSS)	STORAGE						
	CAPACITY	%	%	%	%	%	%
	MI	06 December 2021	Previous week	2020	2019	2018	2017
BERG RIVER	130 010	100.2	100.6	98.9	96.7	94.7	64.5
STEENBRAS LOWER	33 517	90.9	90.2	93.6	90.9	76.5	53.9
STEENBRAS UPPER	31 767	100.3	99.7	82.9	94.5	69.6	99.5
THEEWATERSKLOOF	480 188	99.7	99.5	98.3	72.0	54.3	22.2
VOËLVLEI	164 095	95.1	95.3	94.3	86.3	89.5	25.8
WEMMERSHOEK	58 644	91.3	92.1	97.9	87.1	84.3	51.6
TOTAL STORED	898 221	880 899	880 678	870 435	724 622	627 895	312 513
% STORAGE		98.1%	98.0%	96.9%	80.7%	69.9%	34.8%

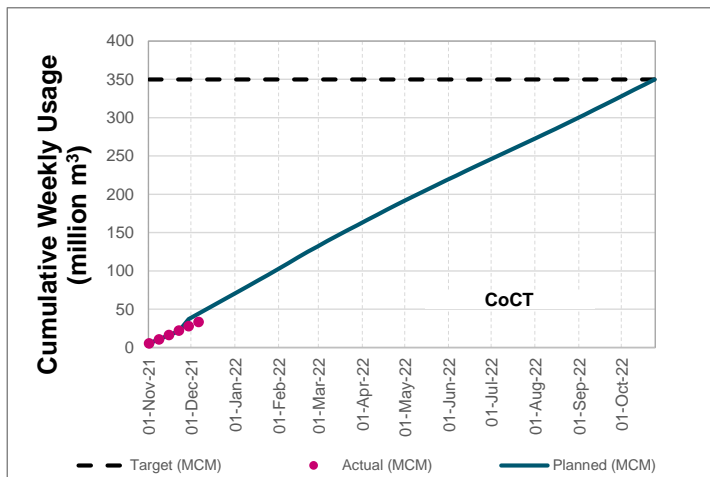
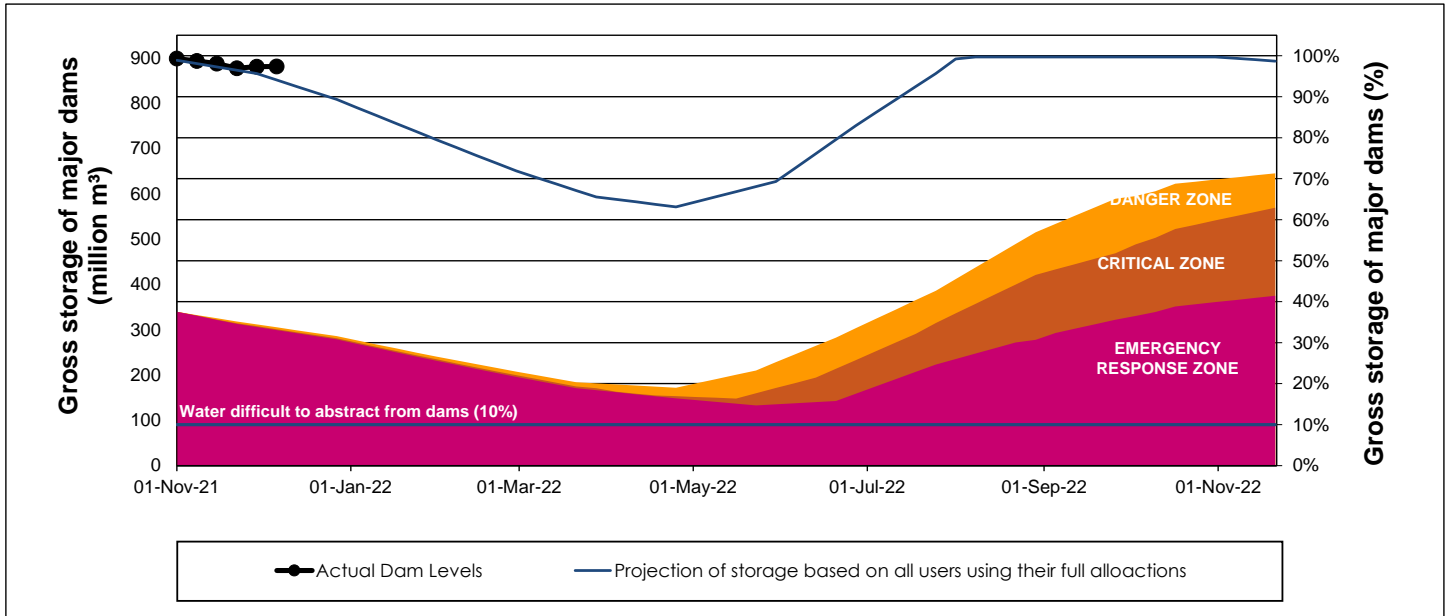
WCWSS Storage Record (2008 - Present)



WCWSS Comparative Storage Graph



WCWSS Dam Storage and Water Use Tracking



Water Stored in Minor Dams

Overall Percentage Full **80.0**

Weekly Change **-0.03**

MINOR DAMS	STORAGE						
	CAPACITY	%	%	%	%	%	%
	MI	06 December 2021	Previous week	2020	2019	2018	2017
ALEXANDRA (Table Mountain)	126	54.6	55.3	70.0	56.4	58.9	57.5
DE VILLIERS (Table Mountain)	243	50.5	52.3	88.8	98.6	72.9	80.1
HELY-HUTCHINSON (Table Mount)	925	78.0	78.0	71.4	98.0	97.3	100.3
KLEINPLAATS (Simon's Town)	1 368	94.7	94.7	95.8	79.2	85.6	59.7
LAND-EN-ZEEZICHT (Helderberg)	451	98.8	100.0	95.5	90.7	99.8	100.0
LEWIS GAY (Simon's Town)	182	76.0	79.6	86.8	40.4	69.1	83.9
VICTORIA (Table Mountain)	128	101.2	99.3	97.7	95.8	89.3	100.4
WOODHEAD (Table Mountain)	954	65.9	64.5	64.7	83.4	66.9	89.9
Total Stored	4 377	3502.7	3503.9	3556.3	3666.3	3610.6	3576.8
Percentages stored		80.0	80.1	81.3	83.8	82.5	81.7

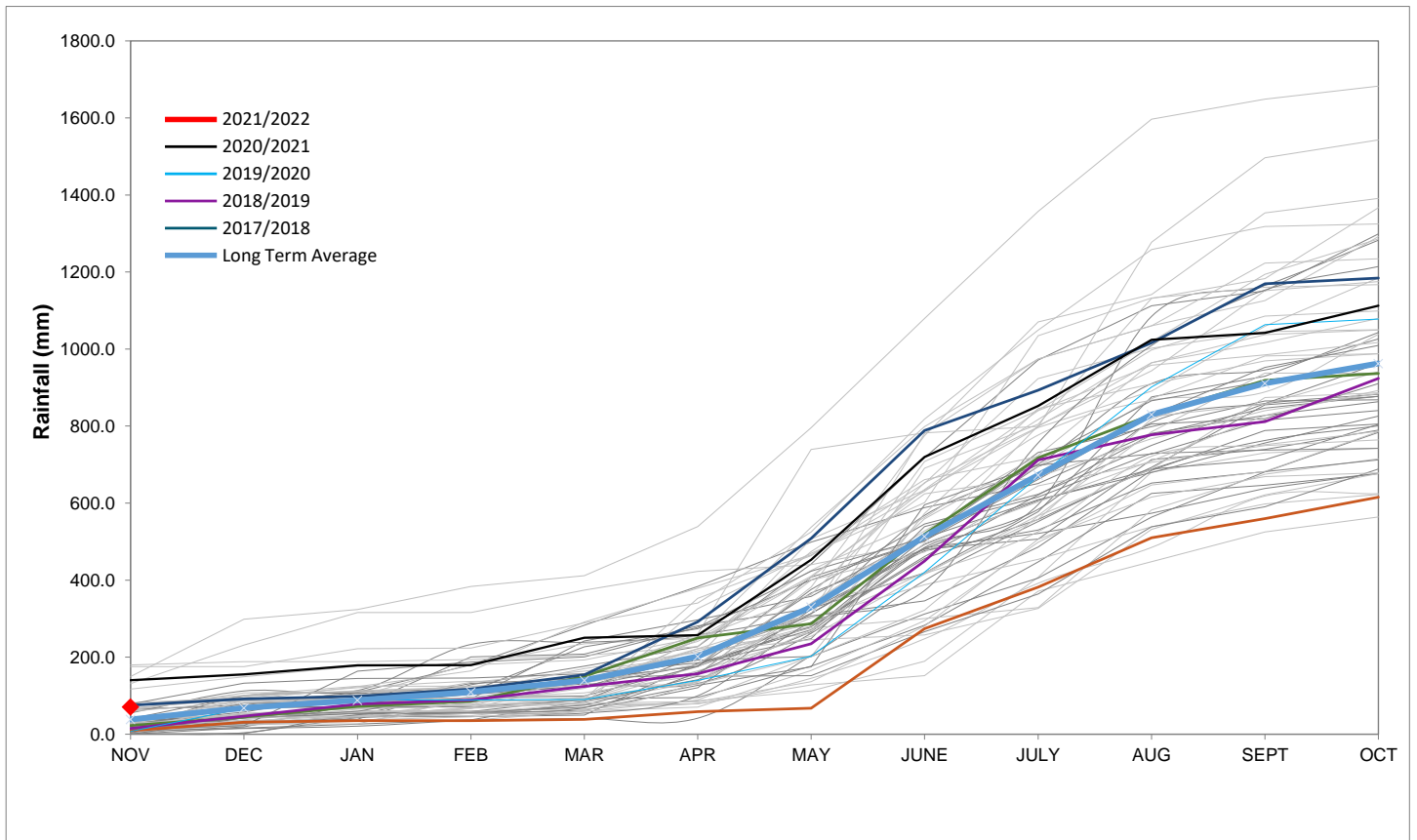
Rainfall Recorded

RAINFALL (mm)	30-Nov	01-Dec	02-Dec	03-Dec	04-Dec	05-Dec	06-Dec	Dec	
								Total*	LT Average
Blackheath Upper	0.0	0.0	0.0	0.0	3.0	1.0	0.0	4.0	13.0
Brooklands	0.0	0.0	0.0	5.0	5.0	14.0	0.0	24.0	26.9
Newlands	0.0	0.0	4.0	0.0	12.5	1.5	1.0	19.0	47.9
Steenbras	0.0	0.0	0.0	0.0	10.0	0.5	0.0	10.5	36.4
Table Mountain (Woodhead)	0.0	11.0	0.0	0.0	44.0	39.0		94.0	63.0
Theewaterskloof	2.8	0.0	1.6	0.0	13.2	7.8	0.0	25.4	20.3
Tygerberg	0.0	0.0	1.6	0.0	6.2	0.5	0.0	8.3	10.2
Voëlvlei	0.0	0.0	0.0	0.0	17.0	20.0	1.0	38.0	13.0
Wemmershoek	0.4	0.0	0.0	0.0	6.3	5.6	0.0	12.3	26.7
Wynberg	0.0	0.0	3.0	0.0	15.0	5.0	0.0	23.0	22.0

Notes: *Total/cummulative rainfall for month indicated above
LT: Long Term

Accumulated Monthly Rainfall at Wemmershoek

Note: Wemmershoek station used due to long record and mountainous location



Drinking Water Quality

SAMPLE PASS RATE

Month	Water Quality Compliance (%)	Target (%)
Aug-20	99.21	98
Sep-20	99.20	98
Oct-20	99.17	98
Nov-20	99.17	98
Dec-20	99.14	98
Jan-21	99.16	98
Feb-21	99.12	98
Mar-21	99.08	98
Apr-21	99.07	98
May-21	98.98	98
Jun-21	99.11	98
Jul-21	99.10	98
Aug-21	99.12	98
Sep-21	99.09	98
Oct-21	99.11	98

Notes:

This table shows CCT drinking water quality compliance according to the South African National Standard 241:2015. Compliance, measured against all prescribed chemical and microbiological components, consistently exceeds the very high CCT target of 98%. (Overall compliance percentages of continuous sampling and analysis are released on a monthly basis.