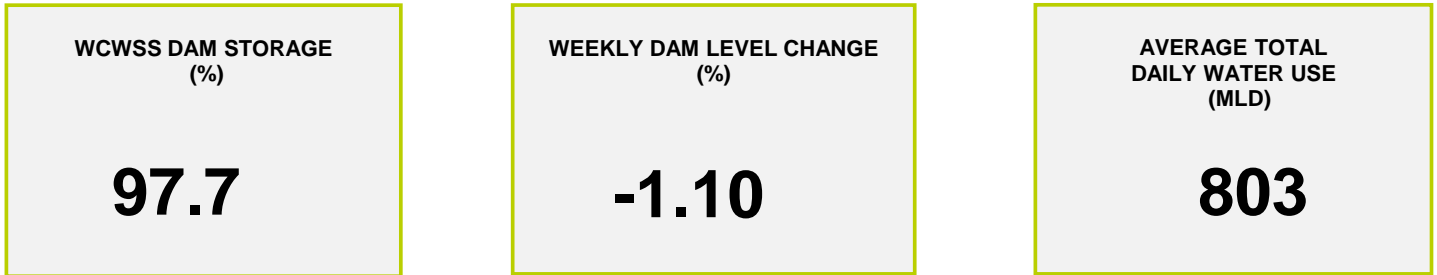
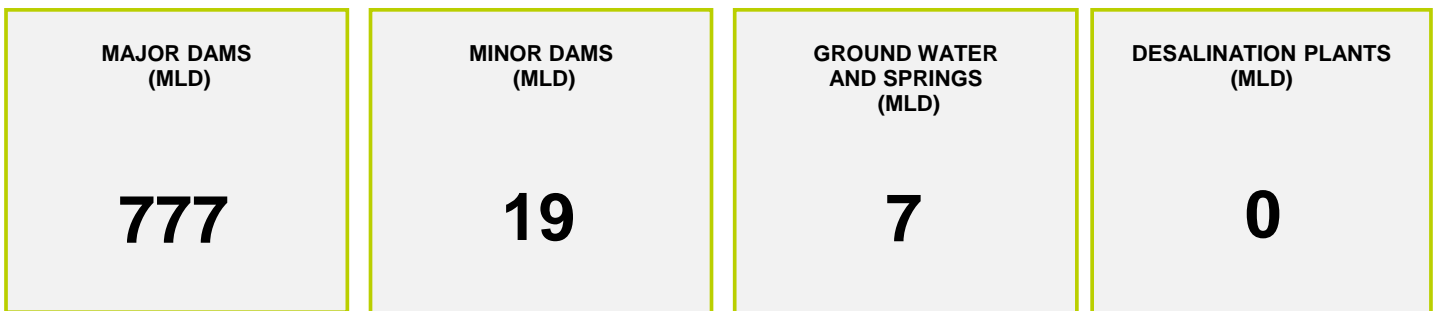




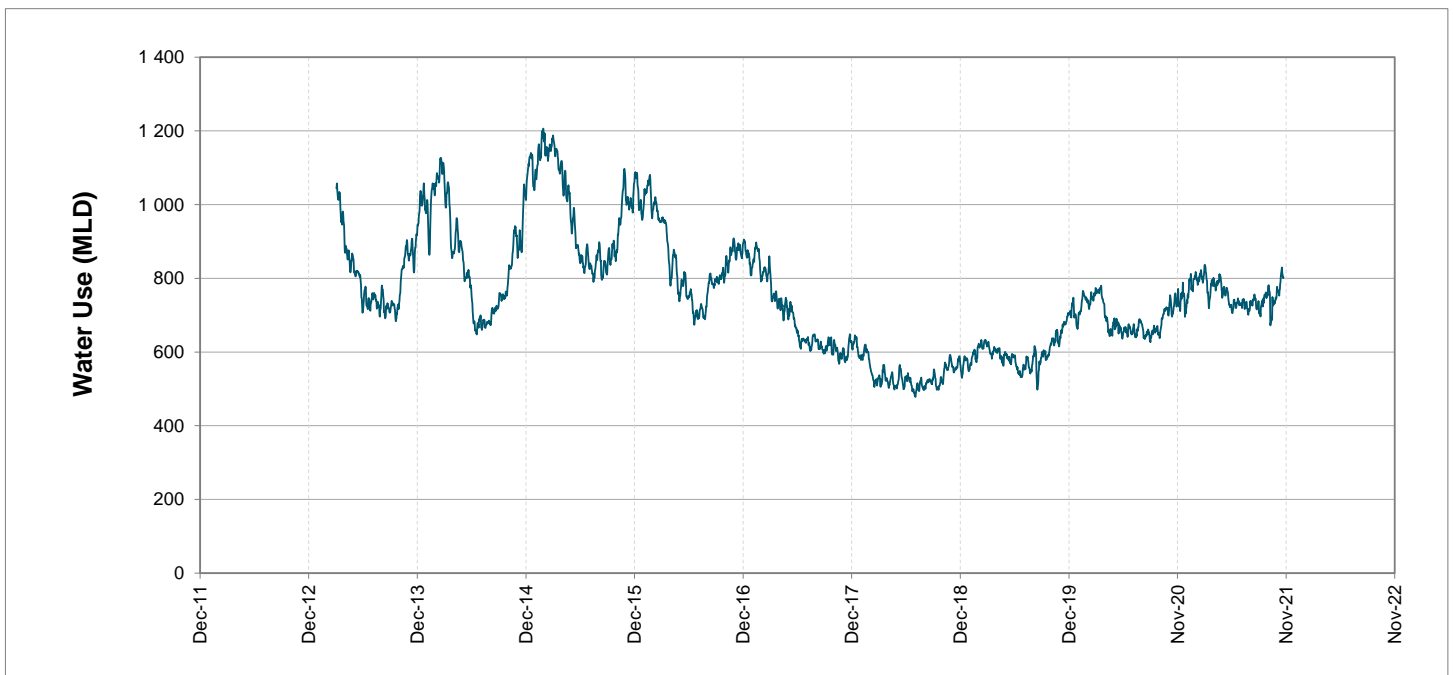
Headline Statistics



Water Production from Different Sources



Overall Water Usage Trend (2010 - Present)



WCWSS means Western Cape Water Supply System

MLD means million litres per day

More information on Water Saving and Restrictions is available on the City of Cape Town's 'ThinkWater' website

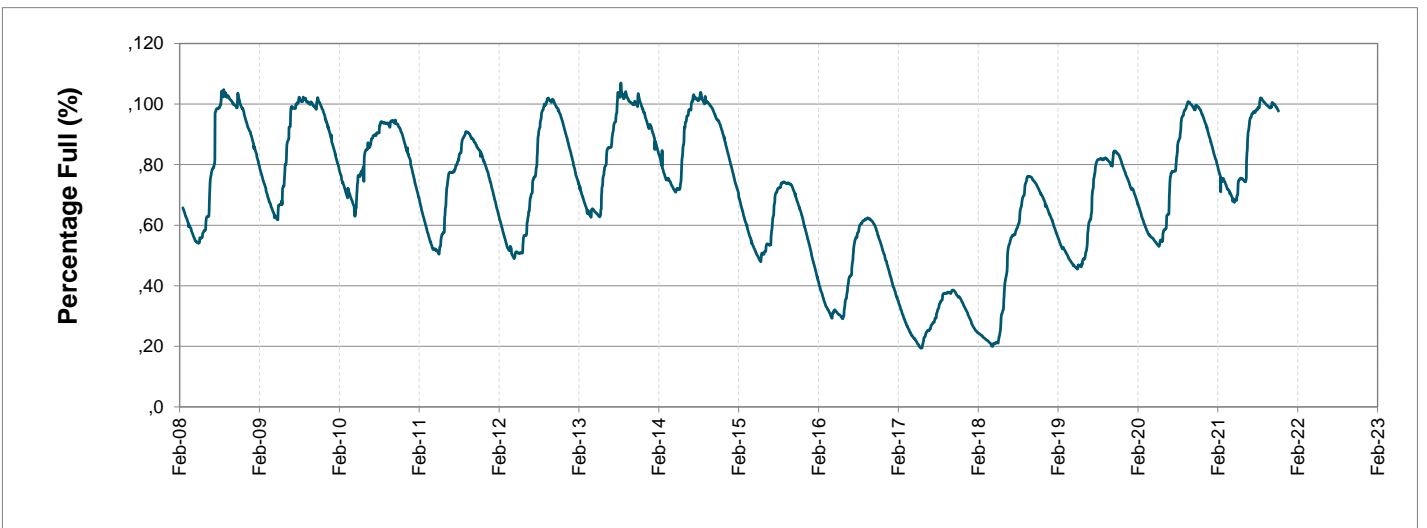
Water Stored in Major Dams (WCWSS)

Overall Percentage Full **97.7%**

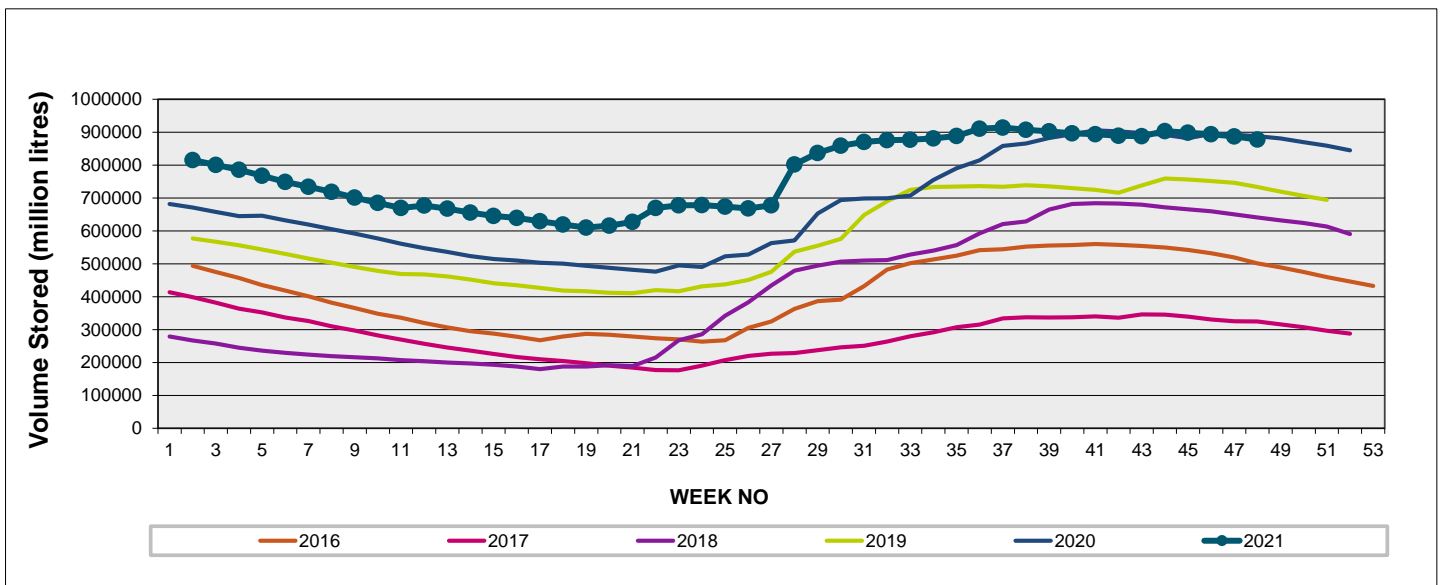
Weekly Change **-1.1%**

MAJOR DAMS (WCWSS)	STORAGE						
	CAPACITY	%	%	%	%	%	%
	MI	22 November 2021	Previous week	2020	2019	2018	2017
BERG RIVER	130 010	98.9	99.9	99.9	99.5	97.0	66.2
STEENBRAS LOWER	33 517	91.0	92.1	95.4	94.8	80.8	55.3
STEENBRAS UPPER	31 767	96.6	99.1	87.3	93.2	62.7	100.8
THEEWATERSKLOOF	480 188	98.8	100.0	100.4	74.6	56.2	24.2
VOËLVLEI	164 095	96.8	97.4	95.9	88.9	92.6	26.7
WEMMERSHOEK	58 644	92.3	94.0	99.4	91.5	87.8	50.3
TOTAL STORED	898 221	877 313	887 299	887 447	748 644	646 479	326 370
% STORAGE		97.7%	98.8%	98.8%	83.3%	72.0%	36.3%

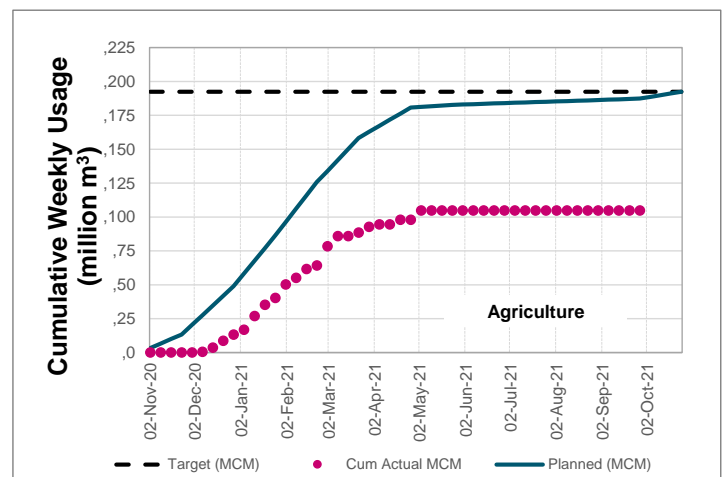
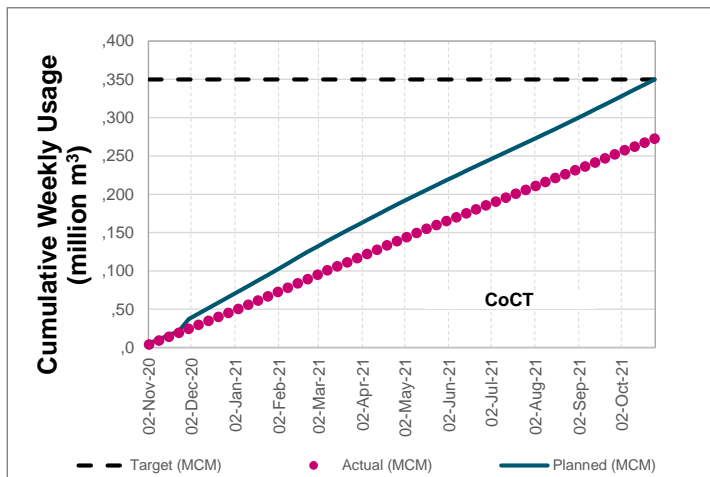
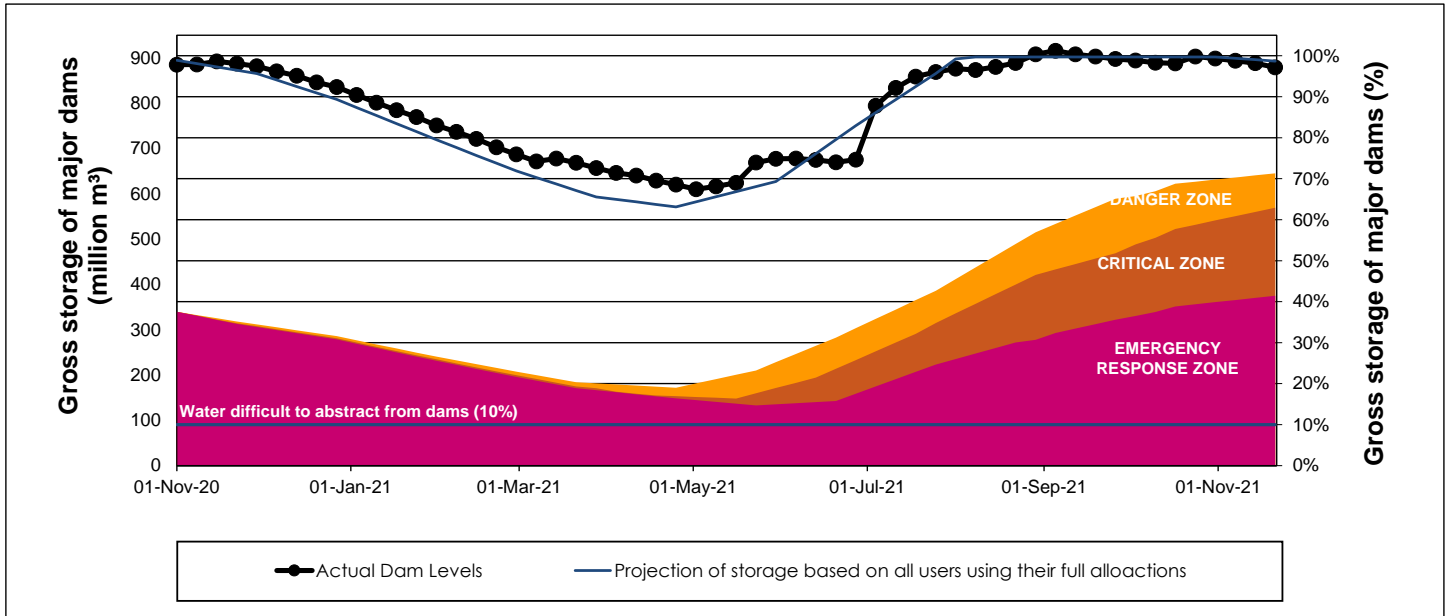
WCWSS Storage Record (2008 - Present)



WCWSS Comparative Storage Graph



WCWSS Dam Storage and Water Use Tracking



Water Stored in Minor Dams

Overall Percentage Full **80.8**

Weekly Change **-1.96**

MINOR DAMS	STORAGE						
	CAPACITY	%	%	%	%	%	%
	MI	22 November 2021	Previous week	2020	2019	2018	2017
ALEXANDRA (Table Mountain)	126	56.9	58.4	77.1	62.8	65.0	60.9
DE VILLIERS (Table Mountain)	243	56.7	60.6	96.9	99.0	83.4	83.1
HELY-HUTCHINSON (Table Mount)	925	84.3	90.6	85.1	99.0	96.3	100.3
KLEINPLAATS (Simon's Town)	1 368	93.6	96.9	98.0	83.6	89.3	61.9
LAND-EN-ZEEZICHT (Helderberg)	451	100.0	100.0	97.8	87.5	100.0	100.0
LEWIS GAY (Simon's Town)	182	83.9	88.2	86.1	55.4	81.7	79.6
VICTORIA (Table Mountain)	128	97.0	98.9	97.0	98.9	91.6	99.6
WOODHEAD (Table Mountain)	954	61.5	57.7	70.9	82.2	67.3	97.0
Total Stored	4 377	3536.8	3622.4	3807.9	3745.5	3711.8	3677.1
Percentages stored		80.8	82.8	87.0	85.6	84.8	84.0

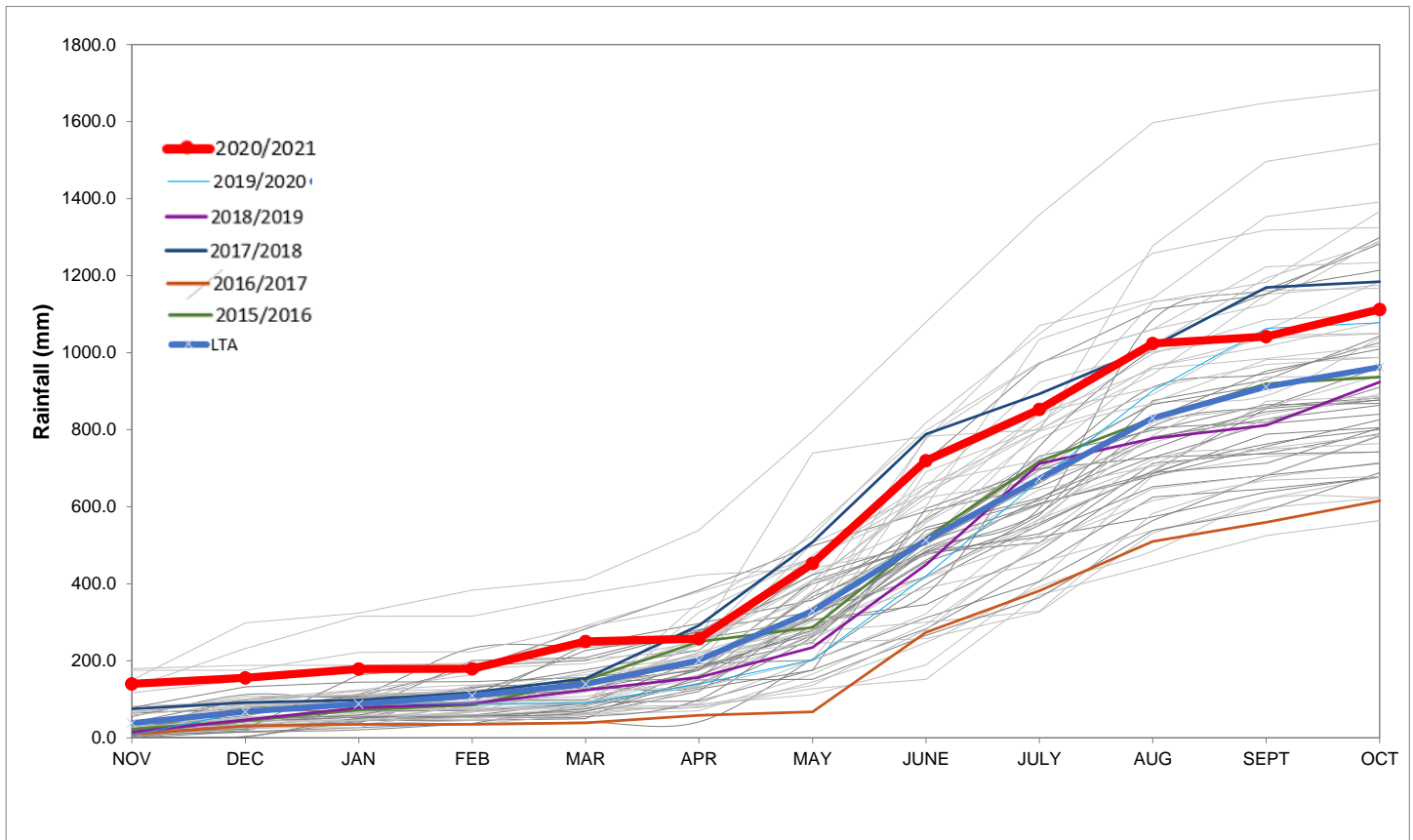
Rainfall Recorded

RAINFALL (mm)	16-Nov	17-Nov	18-Nov	19-Nov	20-Nov	21-Nov	22-Nov	Nov	
								Total*	LT Average
Blackheath Upper	0.0	8.0	0.0	0.0	0.0	0.0		27.6	27.1
Brooklands	3.0	2.0	0.0	0.0	0.0	0.0		32.0	50.8
Newlands	0.0	6.0	0.0	0.0	0.0	0.0		27.5	60.3
Steenbras	0.0	9.5	0.0	0.0	0.0	0.3		38.5	49.3
Table Mountain (Woodhead)	5.5	0.0	18.5	0.0				53.5	69.0
Theewaterskloof	0.0	10.2	0.0	0.0	0.0	3.0		21.8	36.4
Tygerberg	0.0	10.0	0.0	0.0	0.0	0.0		24.7	24.5
Voëlvllei	0.0	8.8	0.0	0.0	0.0	0.0		16.8	29.0
Wemmershoek	0.0	9.1	0.0	0.0	0.0	0.0		35.1	39.8
Wynberg	0.0	7.0	0.0	0.0	0.0	0.0		26.5	44.9

Notes: *Total/cummulative rainfall for month indicated above
LT: Long Term

Accumulated Monthly Rainfall at Wemmershoek

Note: Wemmershoek station used due to long record and mountainous location



Drinking Water Quality

SAMPLE PASS RATE

Month	Water Quality Compliance (%)	Target (%)
Aug-20	99.21	98
Sep-20	99.20	98
Oct-20	99.17	98
Nov-20	99.17	98
Dec-20	99.14	98
Jan-21	99.16	98
Feb-21	99.12	98
Mar-21	99.08	98
Apr-21	99.07	98
May-21	98.98	98
Jun-21	99.11	98
Jul-21	99.10	98
Aug-21	99.12	98
Sep-21	99.09	98
Oct-21	99.11	98

Notes:

This table shows CCT drinking water quality compliance according to the South African National Standard 241:2015. Compliance, measured against all prescribed chemical and microbiological components, consistently exceeds the very high CCT target of 98%. (Overall compliance percentages of continuous sampling and analysis are released on a monthly basis.