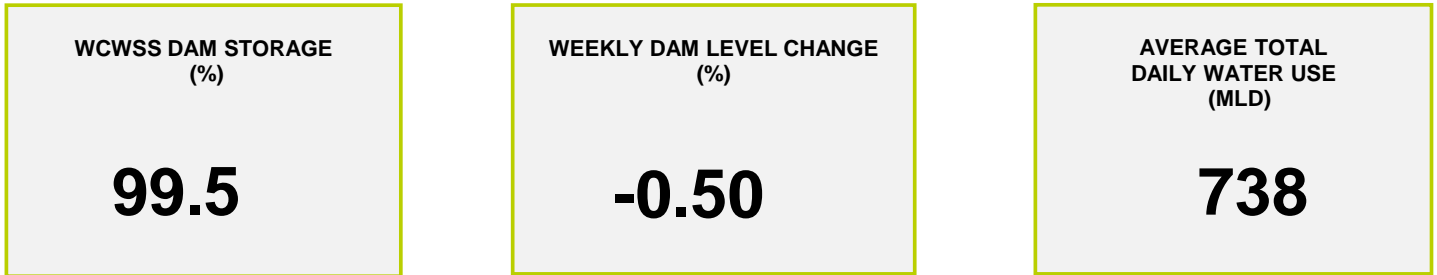
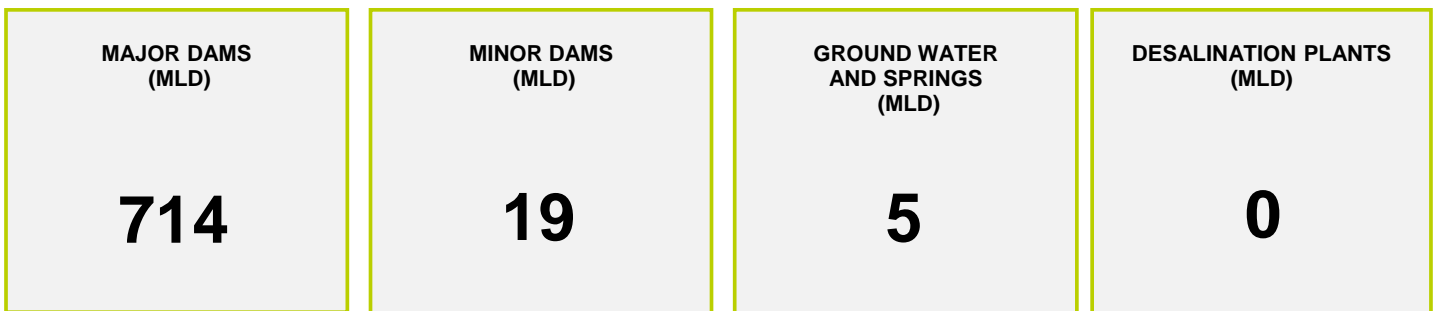




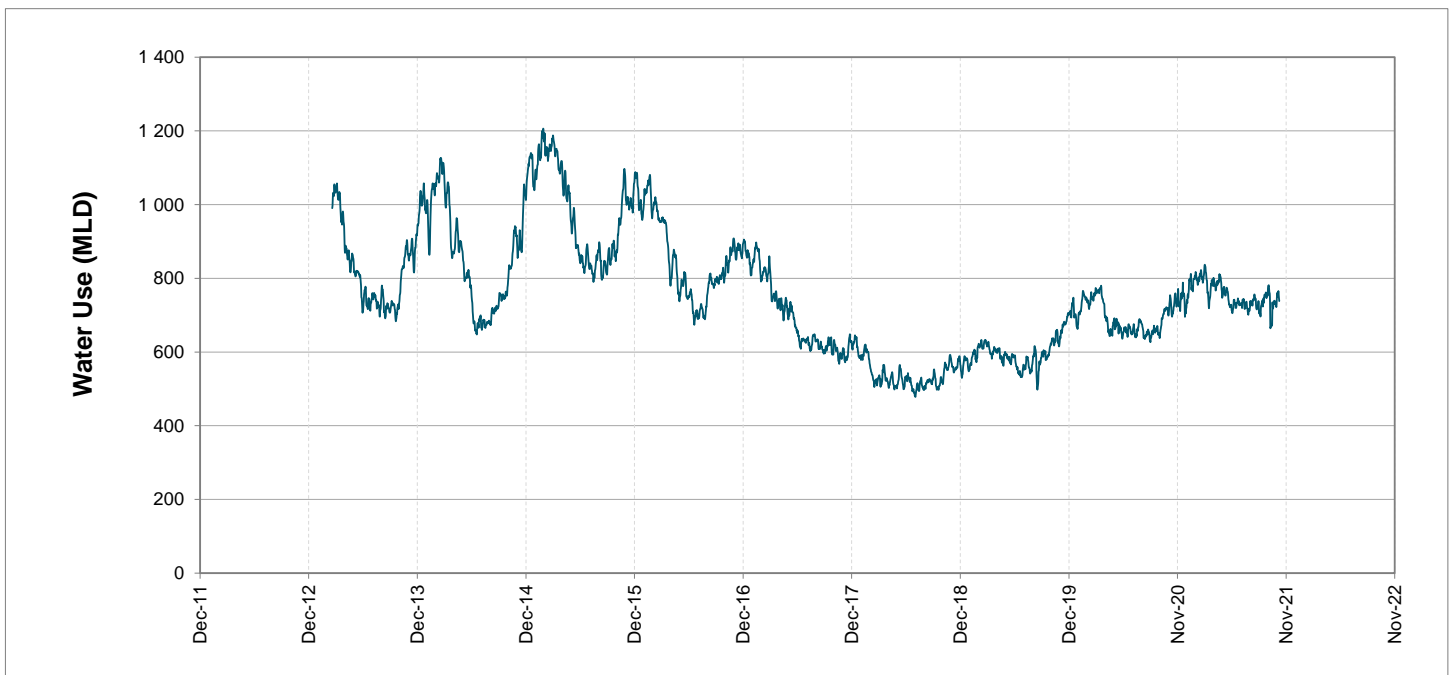
Headline Statistics



Water Production from Different Sources



Overall Water Usage Trend (2010 - Present)



WCWSS means Western Cape Water Supply System

MLD means million litres per day

More information on Water Saving and Restrictions is available on the City of Cape Town's 'ThinkWater' website

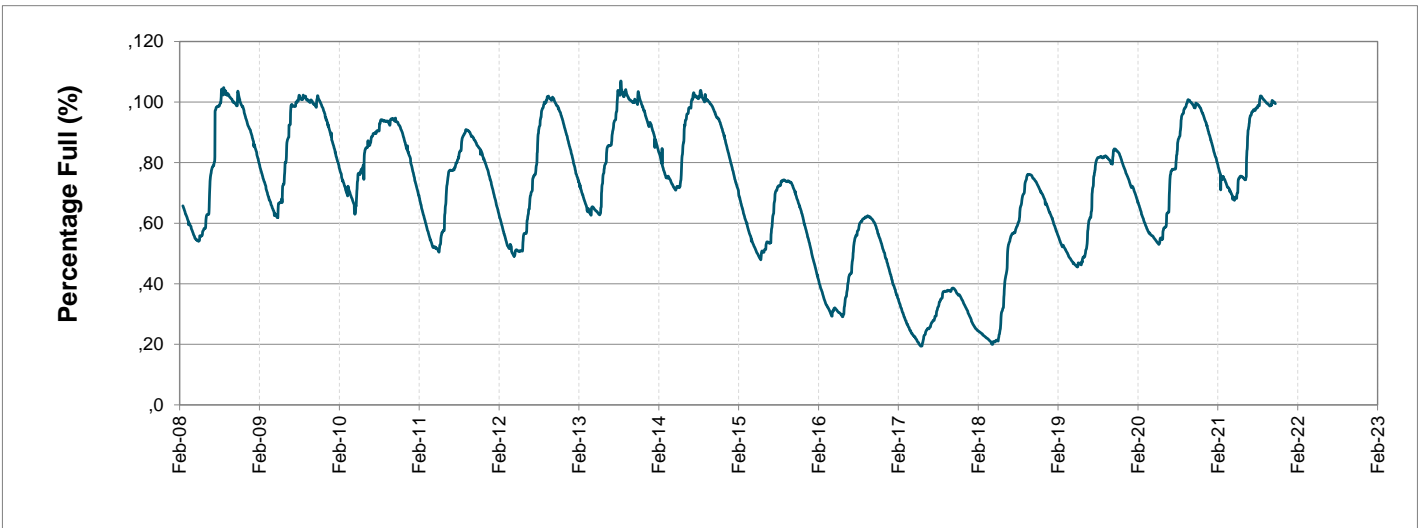
Water Stored in Major Dams (WCWSS)

Overall Percentage Full **99.5%**

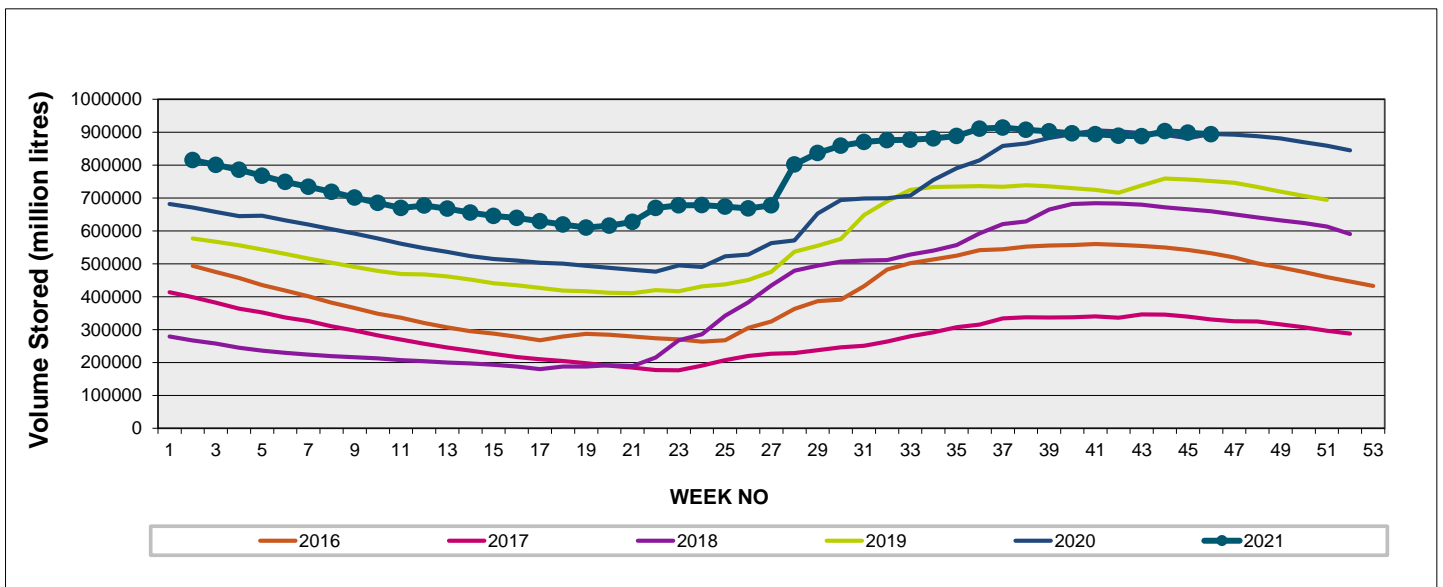
Weekly Change **-0.5%**

MAJOR DAMS (WCWSS)	STORAGE						
	CAPACITY	%	%	%	%	%	%
	MI	08 November 2021	Previous week	2020	2019	2018	2017
BERG RIVER	130 010	100.2	100.2	100.7	100.1	99.3	68.2
STEENBRAS LOWER	33 517	93.9	93.6	95.0	99.4	85.7	53.3
STEENBRAS UPPER	31 767	98.3	98.7	93.1	92.7	69.8	100.8
THEEWATERSKLOOF	480 188	100.7	101.7	99.8	75.4	57.2	26.1
VOËLVLEI	164 095	98.0	98.2	95.2	90.0	94.8	28.0
WEMMERSHOEK	58 644	95.3	95.5	98.3	94.8	91.0	48.9
TOTAL STORED	898 221	893 456	898 517	885 392	757 998	663 678	338 544
% STORAGE		99.5%	100.0%	98.6%	84.4%	73.9%	37.7%

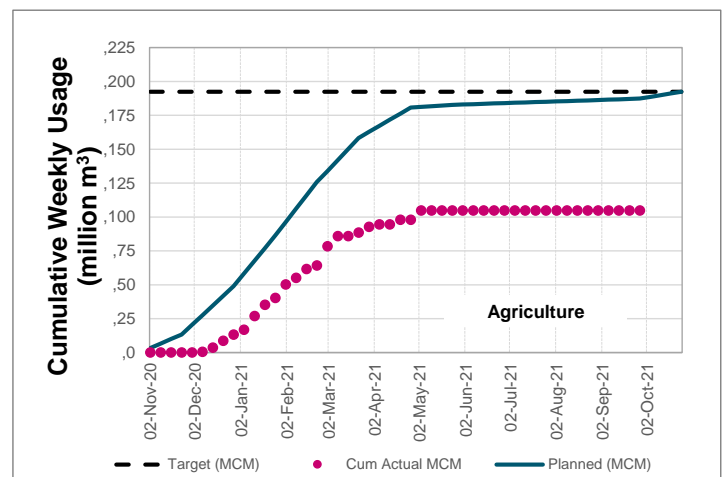
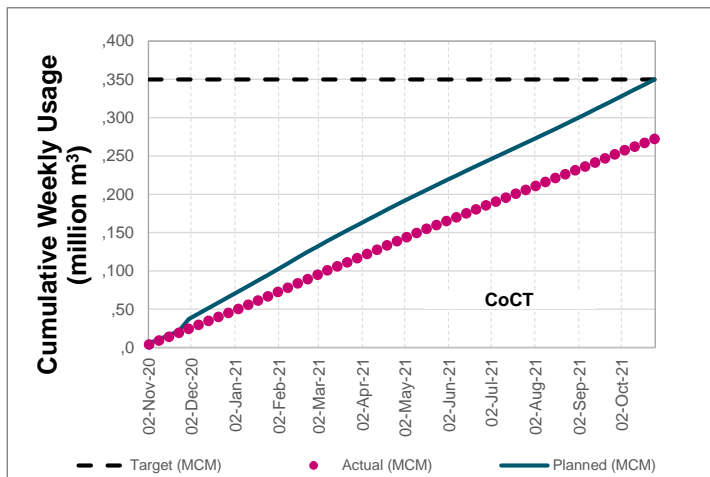
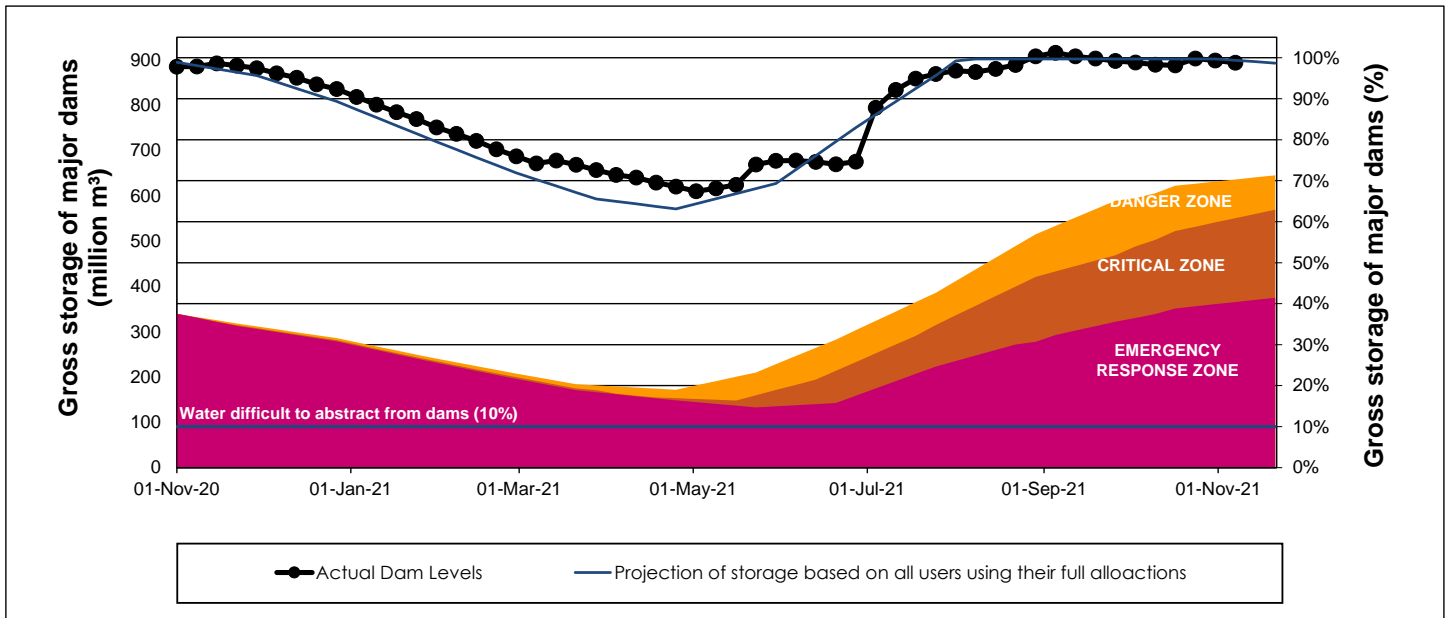
WCWSS Storage Record (2008 - Present)



WCWSS Comparative Storage Graph



WCWSS Dam Storage and Water Use Tracking



Water Stored in Minor Dams

Overall Percentage Full **85.1**

Weekly Change **-0.45**

MINOR DAMS	STORAGE						
	CAPACITY	%	%	%	%	%	%
	MI	08 November 2021	Previous week	2020	2019	2018	2017
ALEXANDRA (Table Mountain)	126	61.2	61.2	75.3	69.4	71.6	66.1
DE VILLIERS (Table Mountain)	243	66.4	71.3	99.7	100.0	84.6	93.0
HELY-HUTCHINSON (Table Mount)	925	99.8	99.5	88.7	99.5	97.5	99.8
KLEINPLAATS (Simon's Town)	1 368	96.9	95.8	98.0	86.2	95.6	65.5
LAND-EN-ZEEZICHT (Helderberg)	451	100.0	100.0	96.5	85.0	99.0	100.0
LEWIS GAY (Simon's Town)	182	91.7	93.6	93.6	67.9	83.9	80.5
VICTORIA (Table Mountain)	128	100.4	100.4	96.6	98.5	93.9	100.4
WOODHEAD (Table Mountain)	954	56.9	59.3	72.9	86.7	67.3	90.5
Total Stored	4 377	3726.1	3745.7	3871.1	3847.4	3817.5	3690.6
Percentages stored		85.1	85.6	88.4	87.9	87.2	84.3

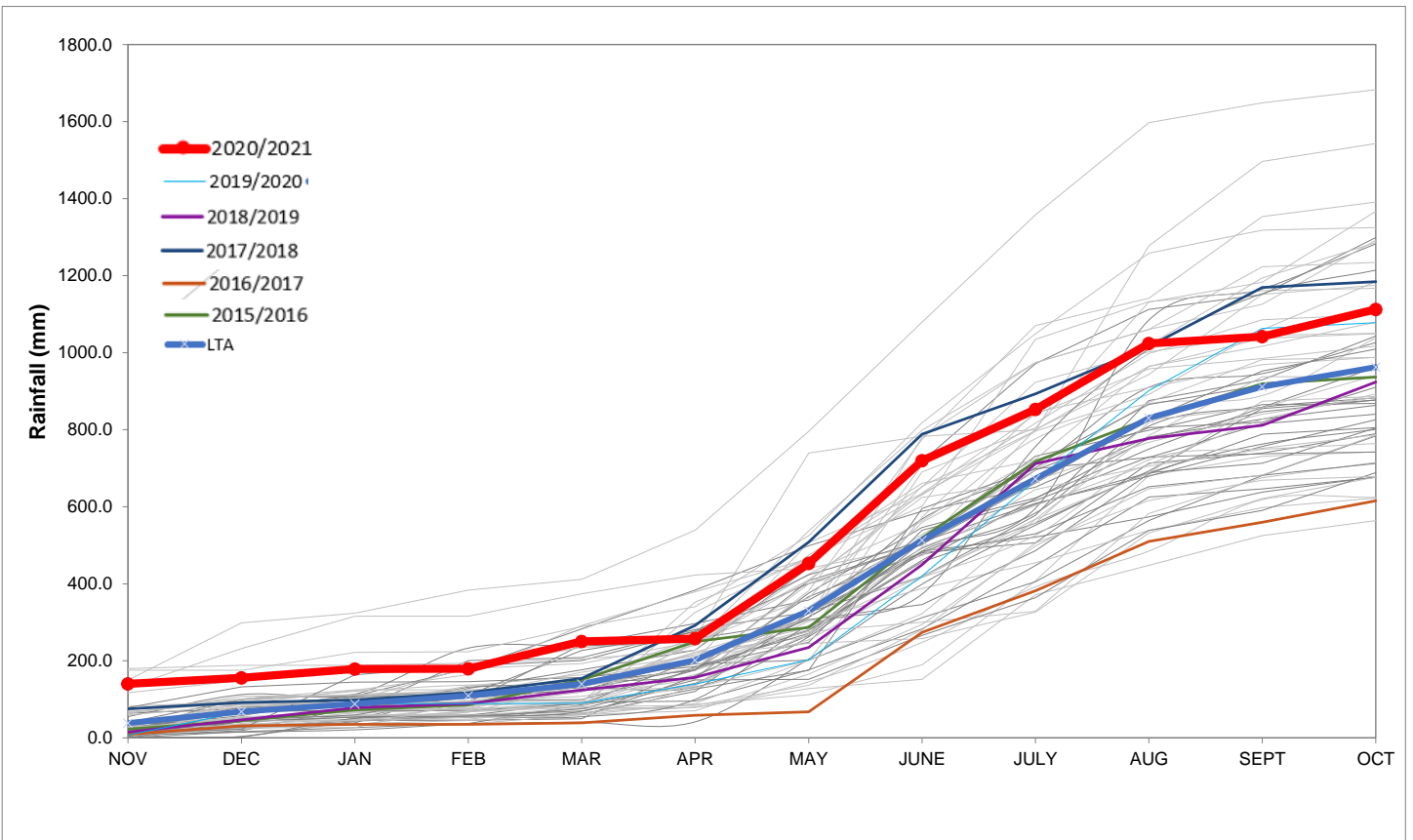
Rainfall Recorded

RAINFALL (mm)	02-Nov	03-Nov	04-Nov	05-Nov	06-Nov	07-Nov	08-Nov	Nov	
								Total*	LT Average
Blackheath Upper	0.0	0.0	0.0	0.0	0.0	0.0	0.0	19.6	27.1
Brooklands	0.0	0.0	0.0	0.0	0.0	0.0	0.0	27.0	50.8
Newlands	0.0	0.0	0.0	0.0	0.0	0.0	0.0	21.5	60.3
Steenbras	0.0	0.0	0.0	0.0	0.0	0.0	0.0	28.7	49.3
Table Mountain (Woodhead)	0.5	0.0	0.0	0.0	0.0	0.0	0.0	29.5	69.0
Theewaterskloof	0.0	0.0	0.0	0.0	0.0	0.0	0.0	8.6	36.4
Tygerberg	0.0	0.0	0.0	0.0	0.0	0.0	0.0	14.7	24.5
Voëlvlei	0.0	0.0	0.0	0.0	0.0	0.0	0.0	8.0	29.0
Wemmershoek	0.0	0.0	0.0	0.0	0.0	0.0	0.0	26.0	39.8
Wynberg	0.0	0.0	0.0	0.0	0.0	0.0	0.0	19.5	44.9

Notes: *Total/cumulative rainfall for month indicated above
LT: Long Term

Accumulated Monthly Rainfall at Wemmershoek

Note: Wemmershoek station used due to long record and mountainous location



Drinking Water Quality

SAMPLE PASS RATE

Month	Water Quality Compliance (%)	Target (%)
Jul-20	99.22	98
Aug-20	99.21	98
Sep-20	99.20	98
Oct-20	99.17	98
Nov-20	99.17	98
Dec-20	99.14	98
Jan-21	99.16	98
Feb-21	99.12	98
Mar-21	99.08	98
Apr-21	99.07	98
May-21	98.98	98
Jun-21	99.11	98
Jul-21	99.10	98
Aug-21	99.12	98
Sep-21	99.09	98

Notes:

This table shows CCT drinking water quality compliance according to the South African National Standard 241:2015. Compliance, measured against all prescribed chemical and microbiological components, consistently exceeds the very high CCT target of 98%. (Overall compliance percentages of continuous sampling and analysis are released on a monthly basis.