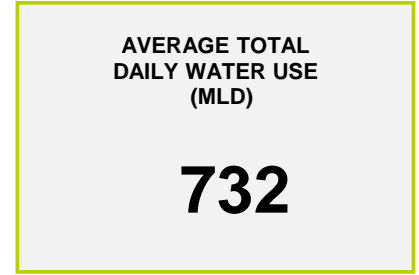
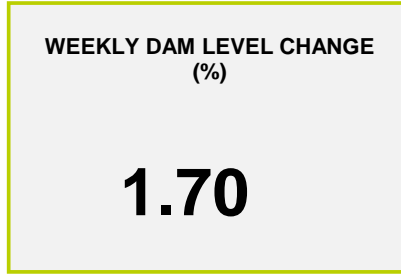
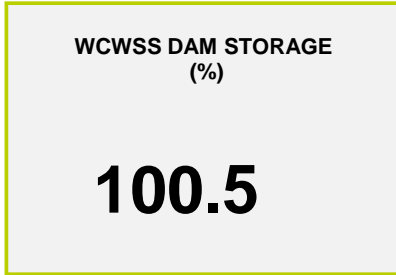




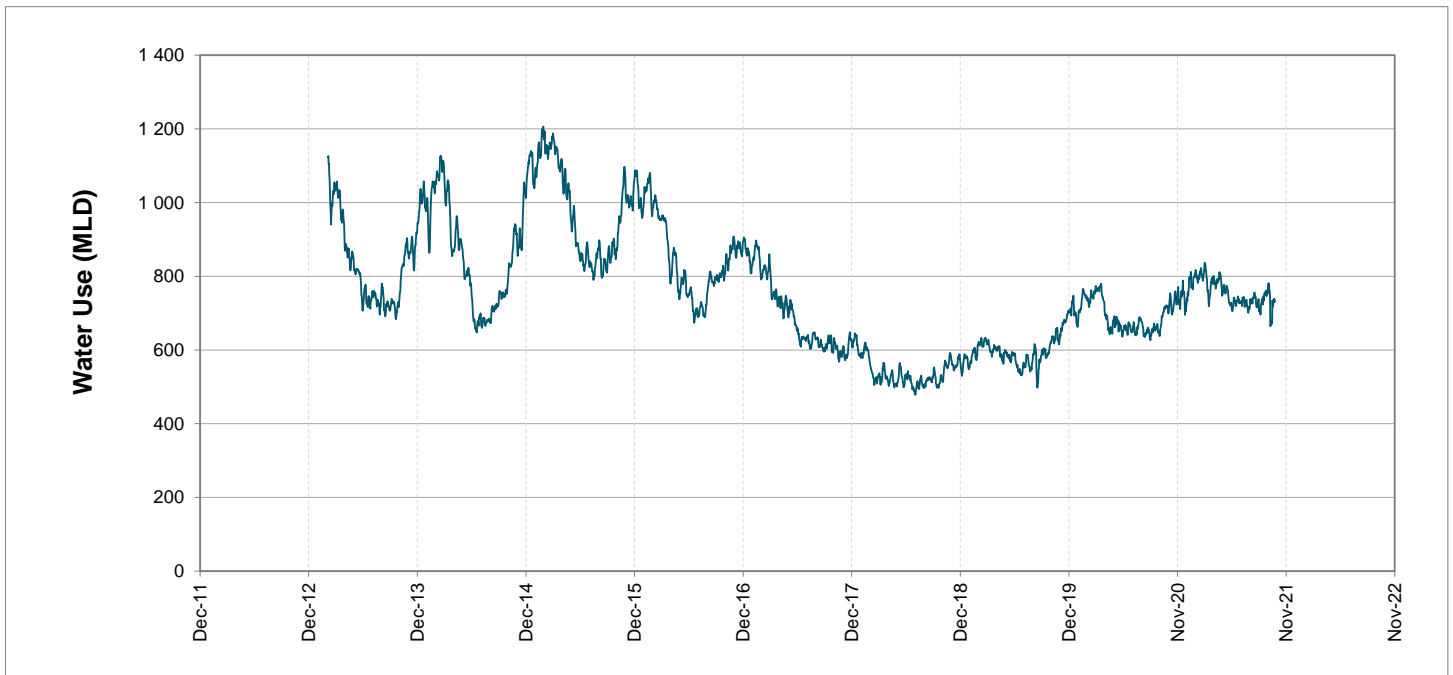
Headline Statistics



Water Production from Different Sources



Overall Water Usage Trend (2010 - Present)



WCWSS means Western Cape Water Supply System

MLD means million litres per day

More information on Water Saving and Restrictions is available on the City of Cape Town's 'ThinkWater' website

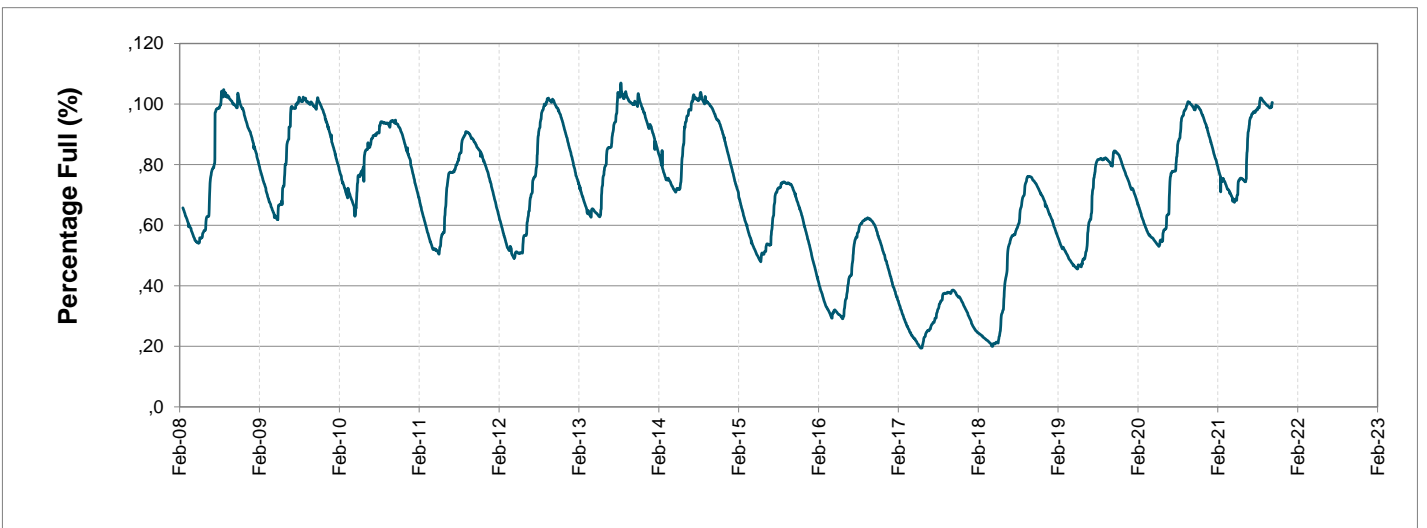
Water Stored in Major Dams (WCWSS)

Overall Percentage Full **100.5%**

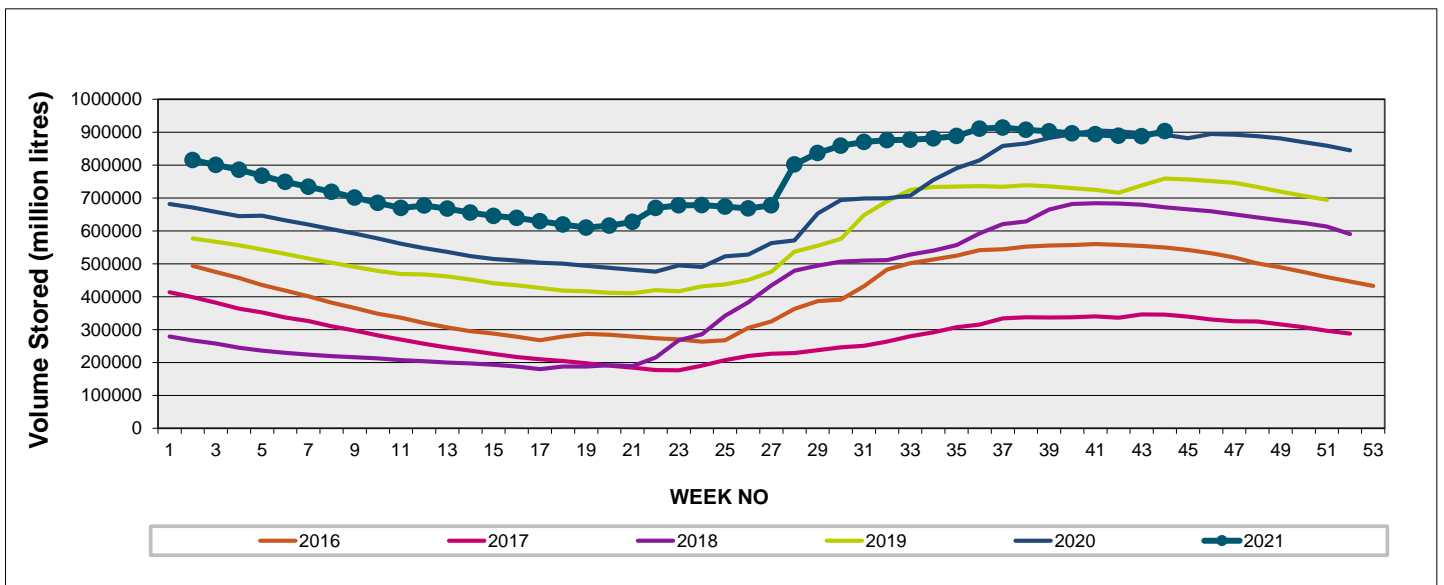
Weekly Change **1.7%**

MAJOR DAMS (WCWSS)	STORAGE						
	CAPACITY	%	%	%	%	%	%
	MI	25 October 2021	Previous week	2020	2019	2018	2017
BERG RIVER	130 010	100.9	100.5	100.0	97.8	99.3	68.2
STEENBRAS LOWER	33 517	95.3	96.1	96.3	91.9	88.0	53.3
STEENBRAS UPPER	31 767	97.5	97.4	91.8	78.1	74.5	100.4
THEEWATERSKLOOF	480 188	102.1	99.2	101.0	69.8	58.4	27.8
VOËLVLEI	164 095	98.6	98.5	97.2	86.8	96.2	28.2
WEMMERSHOEK	58 644	96.4	95.6	97.0	91.2	92.7	47.8
TOTAL STORED	898 221	902 855	887 617	892 525	713 807	674 682	346 331
% STORAGE		100.5%	98.8%	99.4%	79.5%	75.1%	38.6%

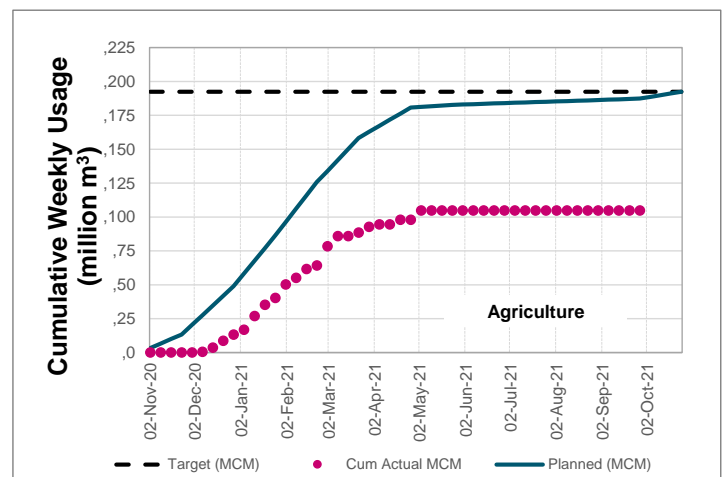
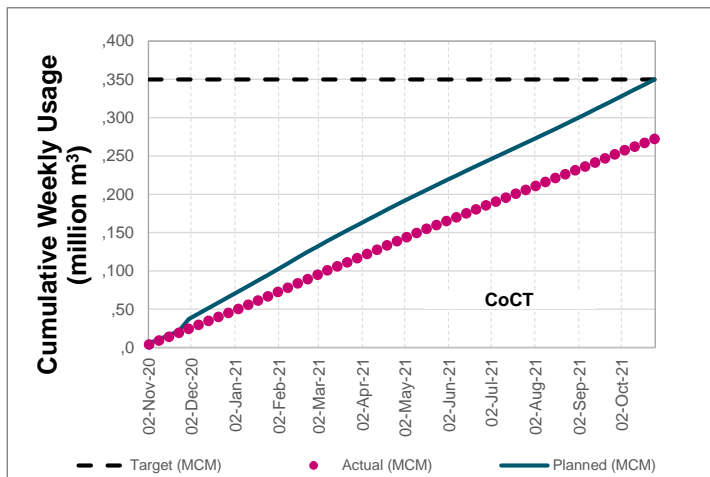
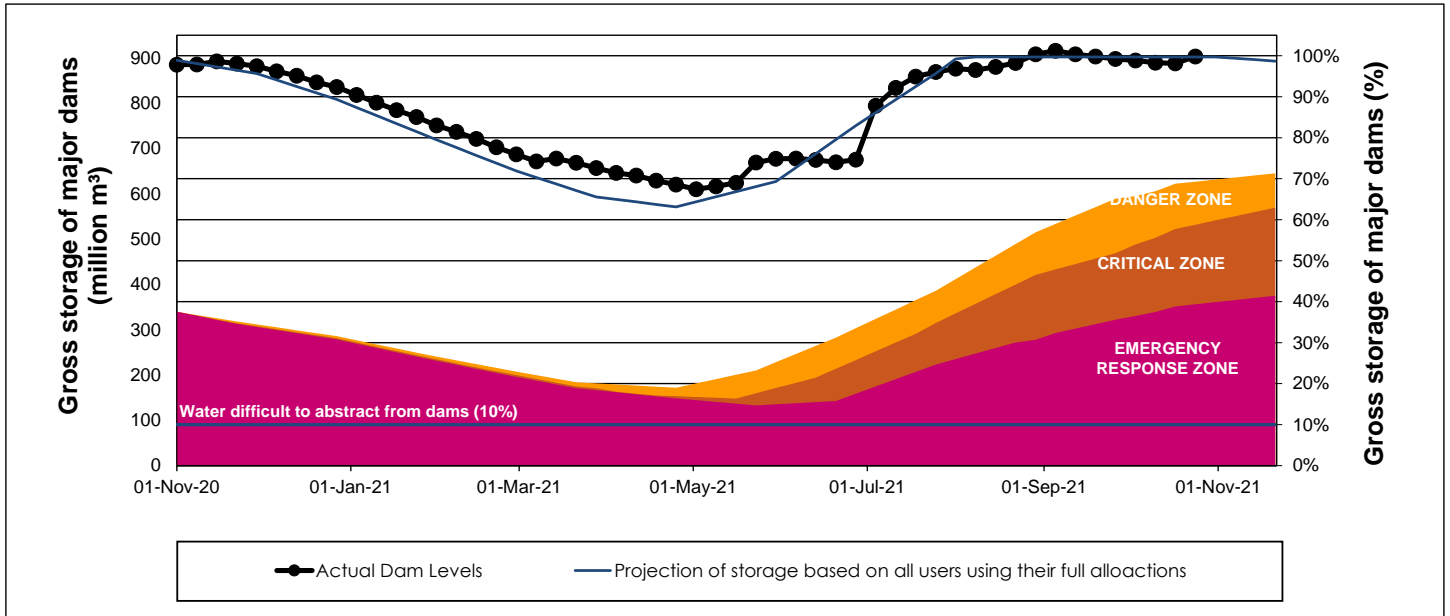
WCWSS Storage Record (2008 - Present)



WCWSS Comparative Storage Graph



WCWSS Dam Storage and Water Use Tracking



Water Stored in Minor Dams

Overall Percentage Full **87.6**

Weekly Change **0.11**

MINOR DAMS	STORAGE						
	CAPACITY	%	%	%	%	%	%
	MI	25 October 2021	Previous week	2020	2019	2018	2017
ALEXANDRA (Table Mountain)	126	61.7	60.9	81.5	47.1	79.0	68.2
DE VILLIERS (Table Mountain)	243	75.9	79.7	100.0	99.5	91.9	98.3
HELY-HUTCHINSON (Table Mount)	925	101.2	99.8	96.3	98.6	98.1	99.8
KLEINPLAATS (Simon's Town)	1 368	96.9	100.0	95.3	79.2	98.0	66.5
LAND-EN-ZEEZICHT (Helderberg)	451	100.0	100.0	96.2	83.5	100.0	100.0
LEWIS GAY (Simon's Town)	182	97.2	88.2	100.9	54.0	91.7	91.7
VICTORIA (Table Mountain)	128	100.8	98.9	98.9	97.3	97.3	100.8
WOODHEAD (Table Mountain)	954	63.2	60.8	78.0	85.3	66.9	98.8
Total Stored	4 377	3832.2	3827.5	3977.7	3671.9	3901.7	3817.6
Percentages stored		87.6	87.4	90.9	83.9	89.1	87.2

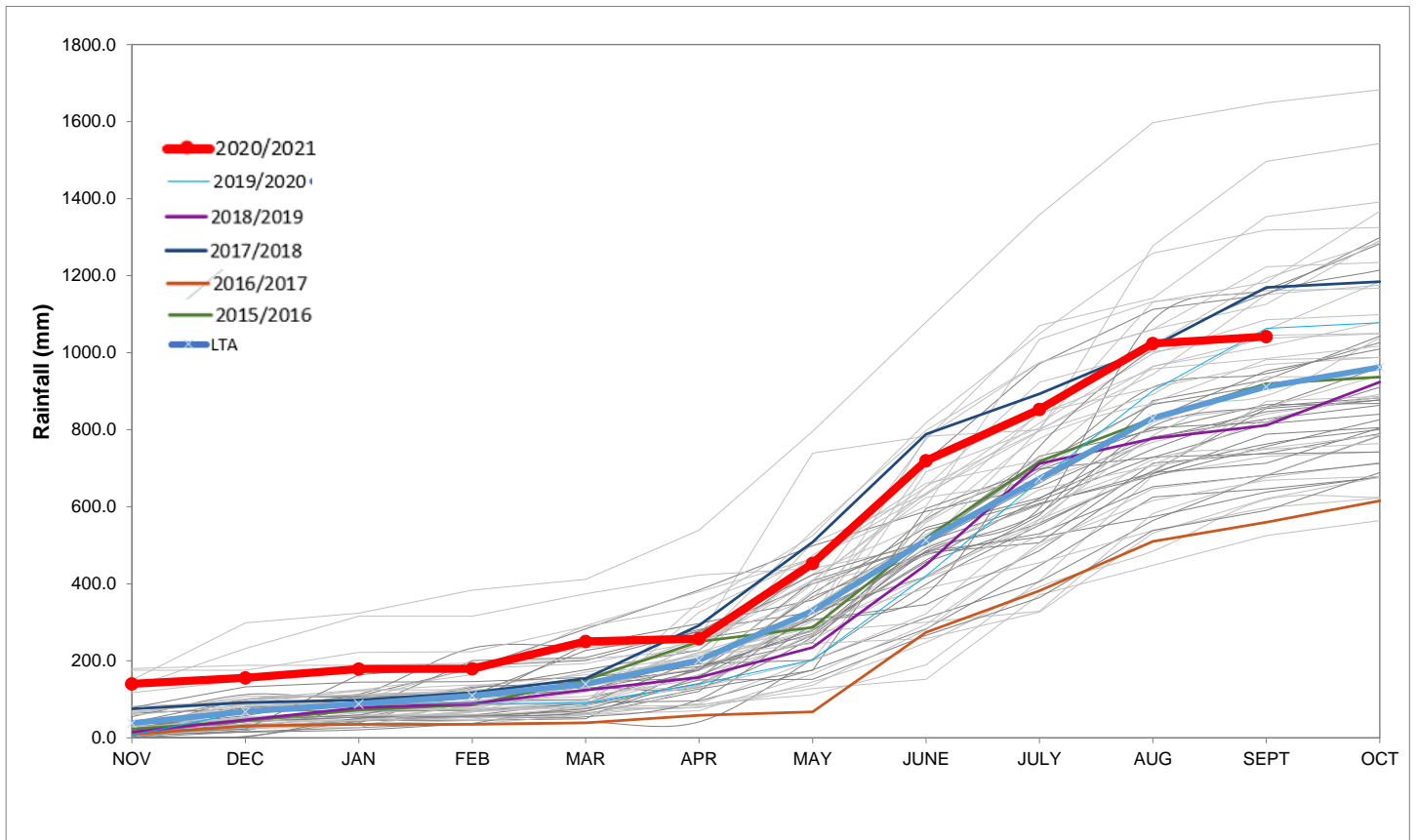
Rainfall Recorded

RAINFALL (mm)	19-Oct	20-Oct	21-Oct	22-Oct	23-Oct	24-Oct	25-Oct	Oct	
								Total*	LT Average
Blackheath Upper	0.0	0.0	0.0	14.0	1.0	0.0		31.2	26.8
Brooklands	0.0	0.0	0.0	20.0	0.0	0.0		48.0	47.7
Newlands	0.0	0.0	0.0	60.0	0.5	0.0		104.4	72.2
Steenbras	0.0	0.0	0.0	21.0	0.0	0.0		72.9	55.4
Table Mountain (Woodhead)	0.0	0.0	0.0	37.5	0.0			93.0	83.7
Theewaterskloof	0.0	0.0	0.0	27.2	0.4	0.0		56.8	44.1
Tygerberg	0.0	0.0	0.0	22.1	0.5	0.0		34.9	28.9
Voëlvlei	0.0	0.0	0.0	20.0	7.0	0.0		43.8	26.7
Wemmershoek	0.0	0.0	0.0	42.0	0.6	0.0		69.2	43.0
Wynberg	0.0	0.0	0.0	44.0	0.0	0.0		58.3	51.1

Notes: *Total/cumulative rainfall for month indicated above
LT: Long Term

Accumulated Monthly Rainfall at Wemmershoek

Note: Wemmershoek station used due to long record and mountainous location



Drinking Water Quality

SAMPLE PASS RATE

Month	Water Quality Compliance (%)	Target (%)
Jul-20	99.22	98
Aug-20	99.21	98
Sep-20	99.20	98
Oct-20	99.17	98
Nov-20	99.17	98
Dec-20	99.14	98
Jan-21	99.16	98
Feb-21	99.12	98
Mar-21	99.08	98
Apr-21	99.07	98
May-21	98.98	98
Jun-21	99.11	98
Jul-21	99.10	98
Aug-21	99.12	98
Sep-21	99.09	98

Notes:

This table shows CCT drinking water quality compliance according to the South African National Standard 241:2015. Compliance, measured against all prescribed chemical and microbiological components, consistently exceeds the very high CCT target of 98%. (Overall compliance percentages of continuous sampling and analysis are released on a monthly basis.