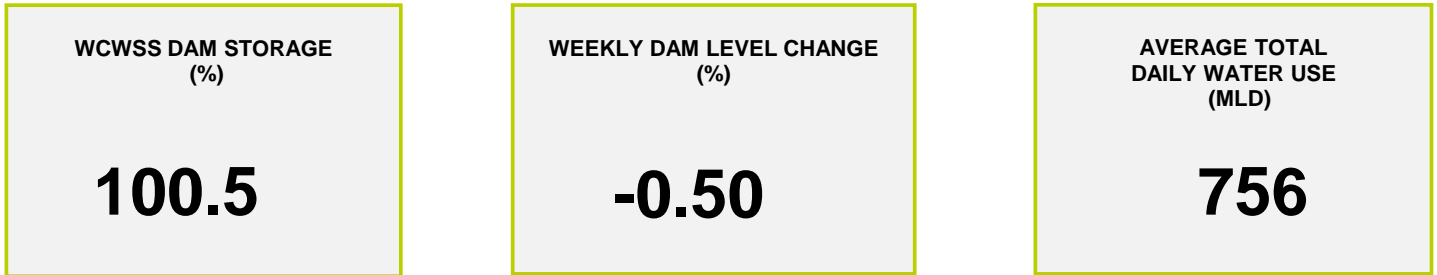
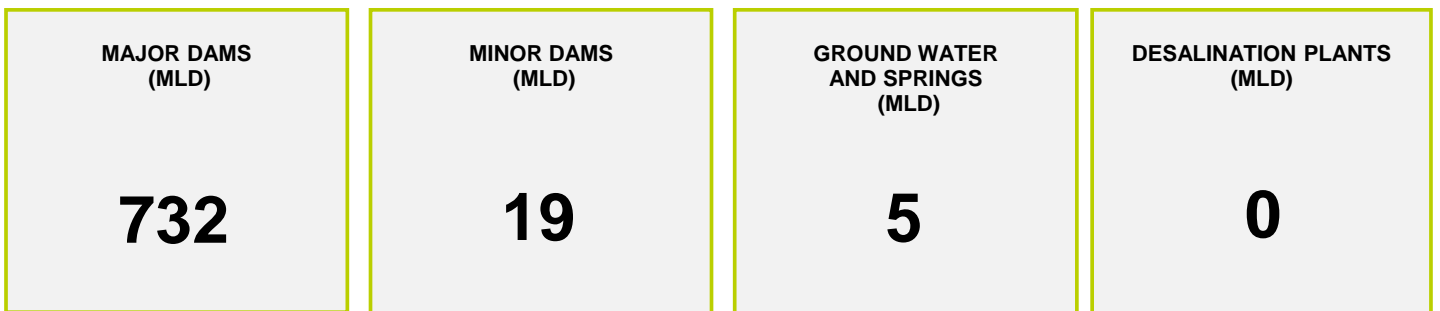




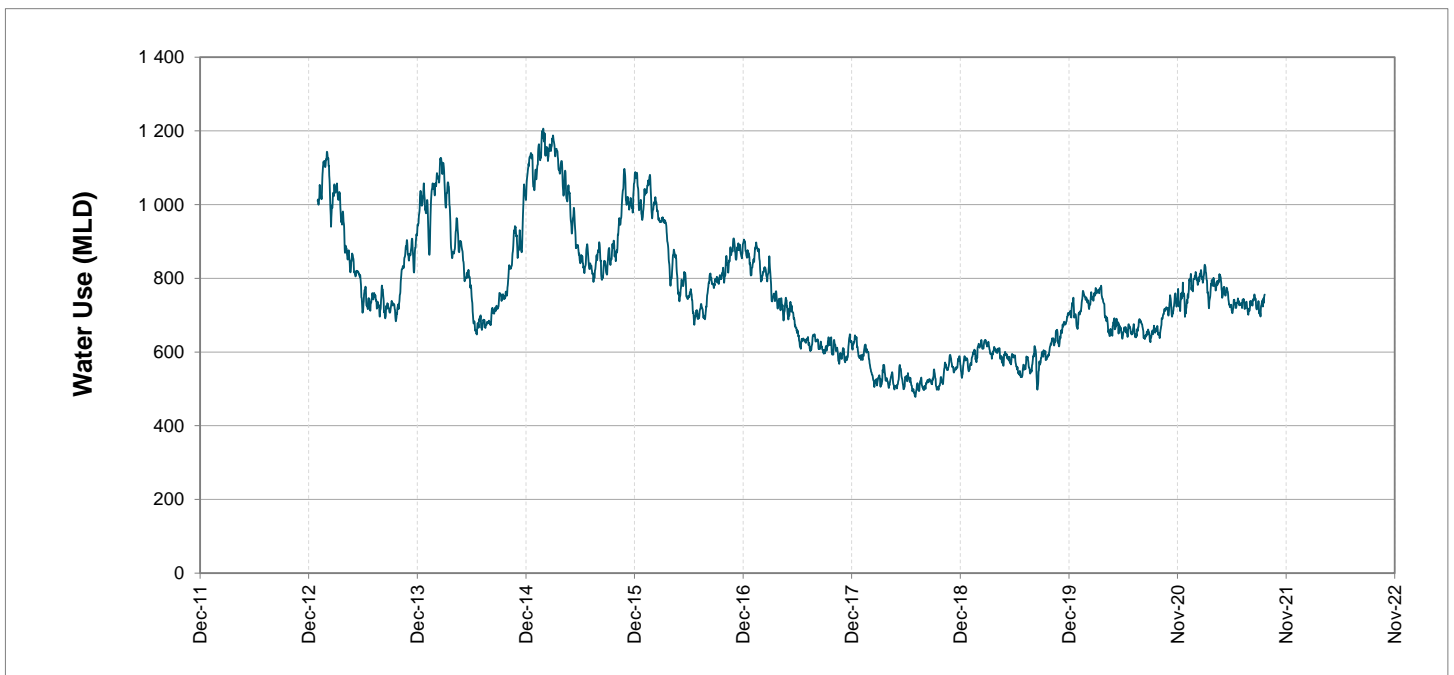
Headline Statistics



Water Production from Different Sources



Overall Water Usage Trend (2010 - Present)



WCWSS means Western Cape Water Supply System

MLD means million litres per day

More information on Water Saving and Restrictions is available on the City of Cape Town's 'ThinkWater' website

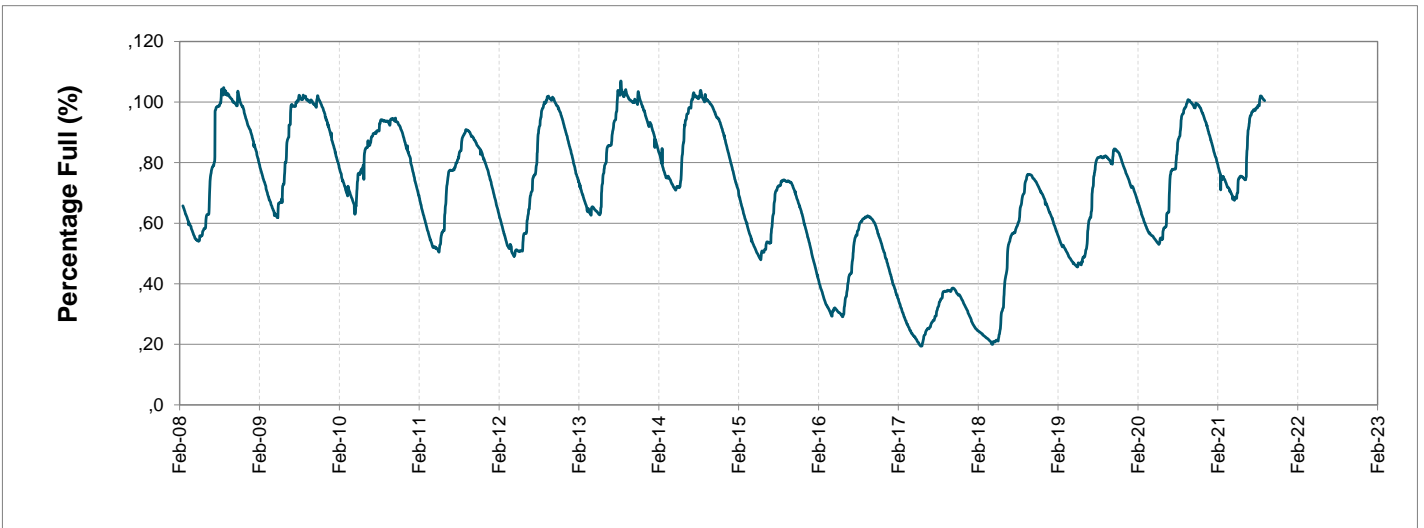
Water Stored in Major Dams (WCWSS)

Overall Percentage Full **100.5%**

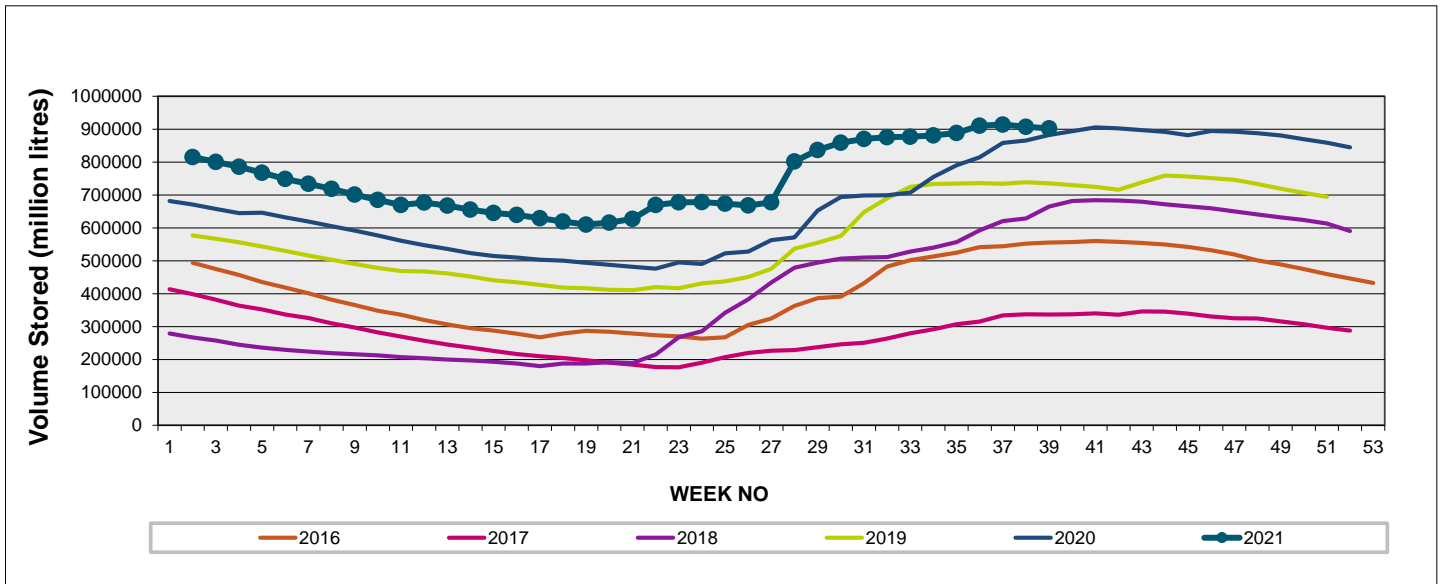
Weekly Change **-0.5%**

MAJOR DAMS (WCWSS)	STORAGE						
	CAPACITY	%	%	%	%	%	%
	MI	20 September 2021	Previous week	2020	2019	2018	2017
BERG RIVER	130 010	100.0	100.2	100.3	99.4	100.1	63.1
STEENBRAS LOWER	33 517	99.5	100.9	100.9	98.8	92.6	47.4
STEENBRAS UPPER	31 767	96.8	96.1	99.3	85.3	95.8	99.7
THEEWATERSKLOOF	480 188	100.8	101.7	97.7	72.3	54.9	28.7
VOËLVLEI	164 095	100.9	100.7	96.5	88.6	87.2	26.7
WEMMERSHOEK	58 644	99.7	100.0	96.6	91.3	93.6	44.1
TOTAL STORED	898 221	902 425	906 903	879 917	735 718	653 178	336 864
% STORAGE		100.5%	101.0%	98.0%	81.9%	72.7%	37.5%

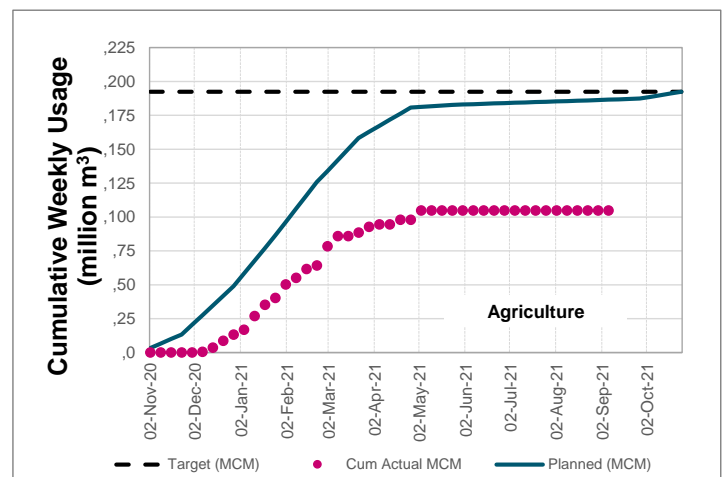
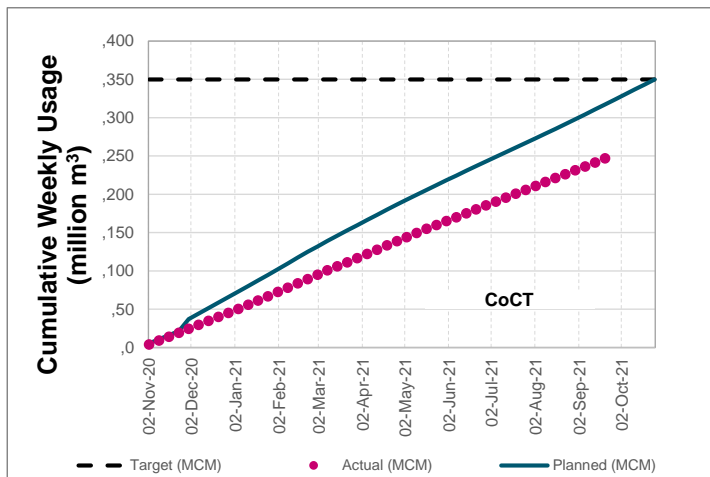
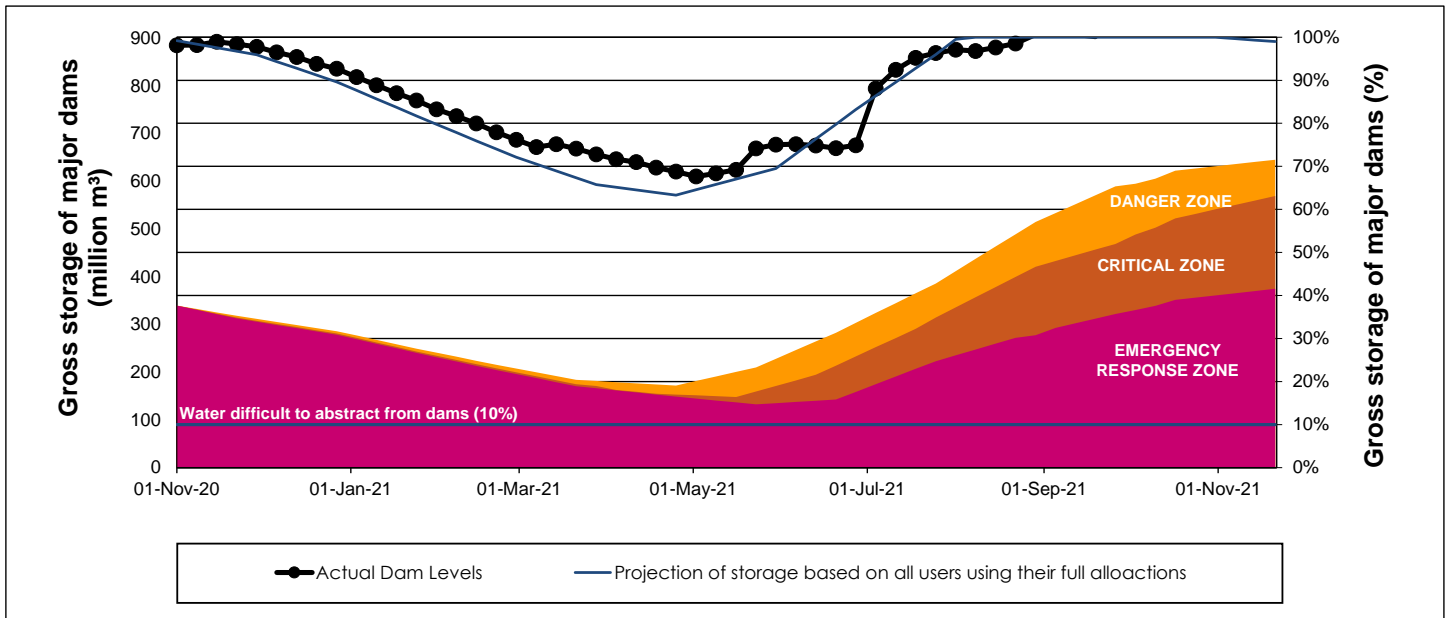
WCWSS Storage Record (2008 - Present)



WCWSS Comparative Storage Graph



WCWSS Dam Storage and Water Use Tracking



Water Stored in Minor Dams

Overall Percentage Full **95.8**

Weekly Change **-1.41**

MINOR DAMS	STORAGE						
	CAPACITY	%	%	%	%	%	%
	MI	20 September 2021	Previous week	2020	2019	2018	2017
ALEXANDRA (Table Mountain)	126	71.9	73.0	99.0	53.2	97.0	82.8
DE VILLIERS (Table Mountain)	243	98.6	100.3	100.0	99.8	100.5	89.4
HELY-HUTCHINSON (Table Mount)	925	99.3	100.7	100.3	100.3	100.8	100.0
KLEINPLAATS (Simon's Town)	1 368	100.0	100.0	100.0	82.0	99.8	70.2
LAND-EN-ZEEZICHT (Helderberg)	451	100.0	100.0	93.0	83.0	100.0	86.7
LEWIS GAY (Simon's Town)	182	96.7	100.7	93.0	76.4	98.2	90.9
VICTORIA (Table Mountain)	128	100.4	100.4	100.8	100.0	101.9	100.4
WOODHEAD (Table Mountain)	954	91.5	95.3	98.8	83.3	73.8	90.5
Total Stored	4 377	4192.7	4254.5	4272.7	3751.6	4078.1	3721.8
Percentages stored		95.8	97.2	97.6	85.7	93.2	85.0

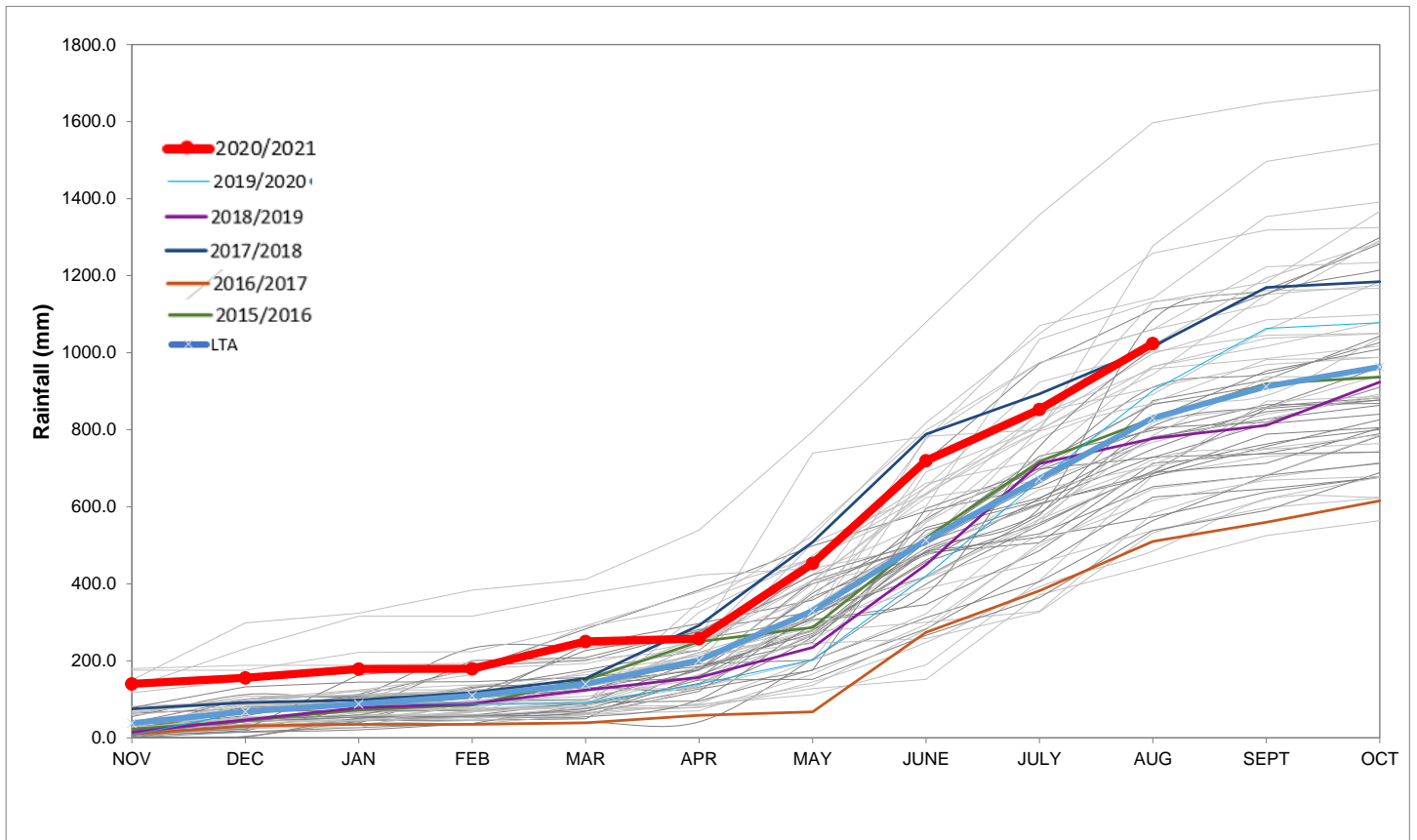
Rainfall Recorded

RAINFALL (mm)	14-Sep	15-Sep	16-Sep	17-Sep	18-Sep	19-Sep	20-Sep	Sep	
								Total*	LT Average
Blackheath Upper	0.0	0.0	0.0	0.0	0.0	0.6		7.5	43.5
Brooklands	0.0	5.0	0.0	0.0	0.0	4.0		32.0	85.7
Newlands	0.0	0.0	0.0	0.0	0.0	1.5		71.1	168.3
Steenbras	0.0	0.0	0.0	0.0	0.0	6.0		13.5	83.6
Table Mountain (Woodhead)	0.0	0.0	0.0	0.0	2.0			77.0	147.2
Theewaterskloof	0.0	0.0	1.6	0.0	0.0	2.0		5.2	41.1
Tygerberg	0.0	0.0	0.0	0.0	0.0	1.1		5.4	47.0
Voëlvlei	0.0	0.0	0.0	0.0	0.0	0.0		13.3	45.1
Wemmershoek	0.0	0.0	0.0	0.0	0.0	0.5		15.9	90.3
Wynberg	0.0	0.0	0.0	0.0	0.0	0.0		27.7	97.8

Notes: *Total/cummulative rainfall for month indicated above
LT: Long Term

Accumulated Monthly Rainfall at Wemmershoek

Note: Wemmershoek station used due to long record and mountainous location



Drinking Water Quality

SAMPLE PASS RATE

Month	Water Quality Compliance (%)	Target (%)
Jun-20	99.19	98
Jul-20	99.22	98
Aug-20	99.21	98
Sep-20	99.20	98
Oct-20	99.17	98
Nov-20	99.17	98
Dec-20	99.14	98
Jan-21	99.16	98
Feb-21	99.12	98
Mar-21	99.08	98
Apr-21	99.07	98
May-21	98.98	98
Jun-21	99.11	98
Jul-21	99.10	98
Aug-21	99.12	98

Notes:

This table shows CCT drinking water quality compliance according to the South African National Standard 241:2015. Compliance, measured against all prescribed chemical and microbiological components, consistently exceeds the very high CCT target of 98%. (Overall compliance percentages of continuous sampling and analysis are released on a monthly basis.