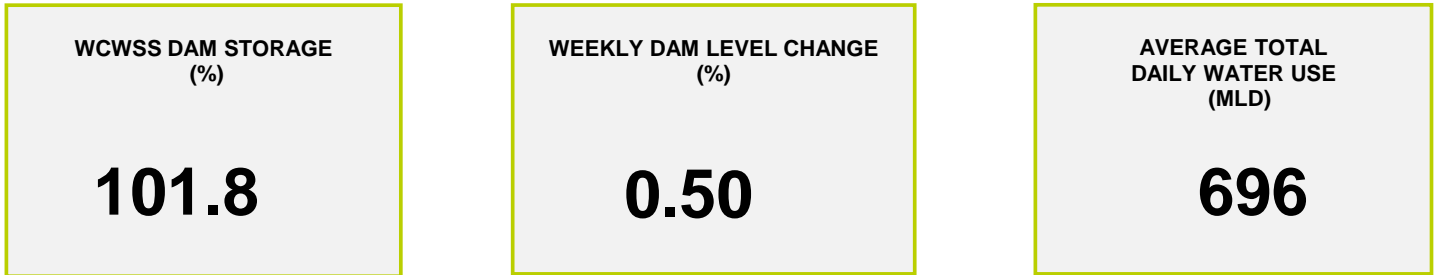
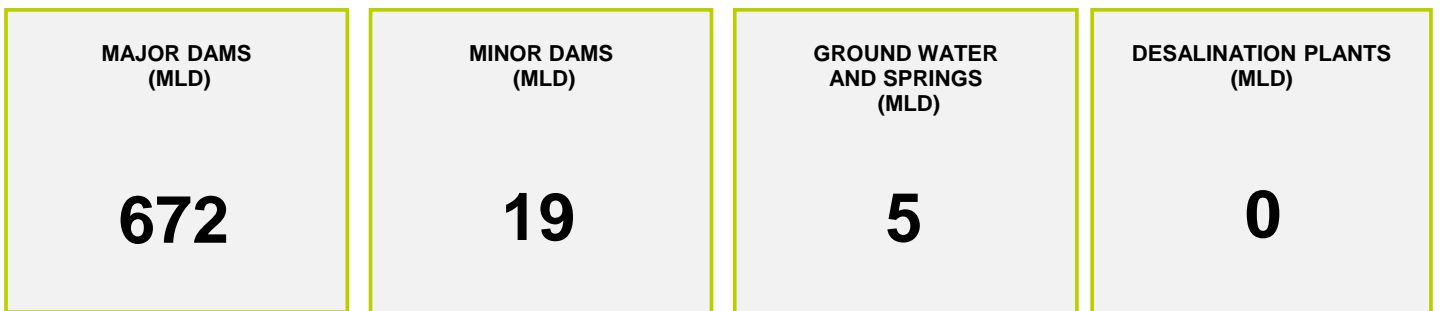




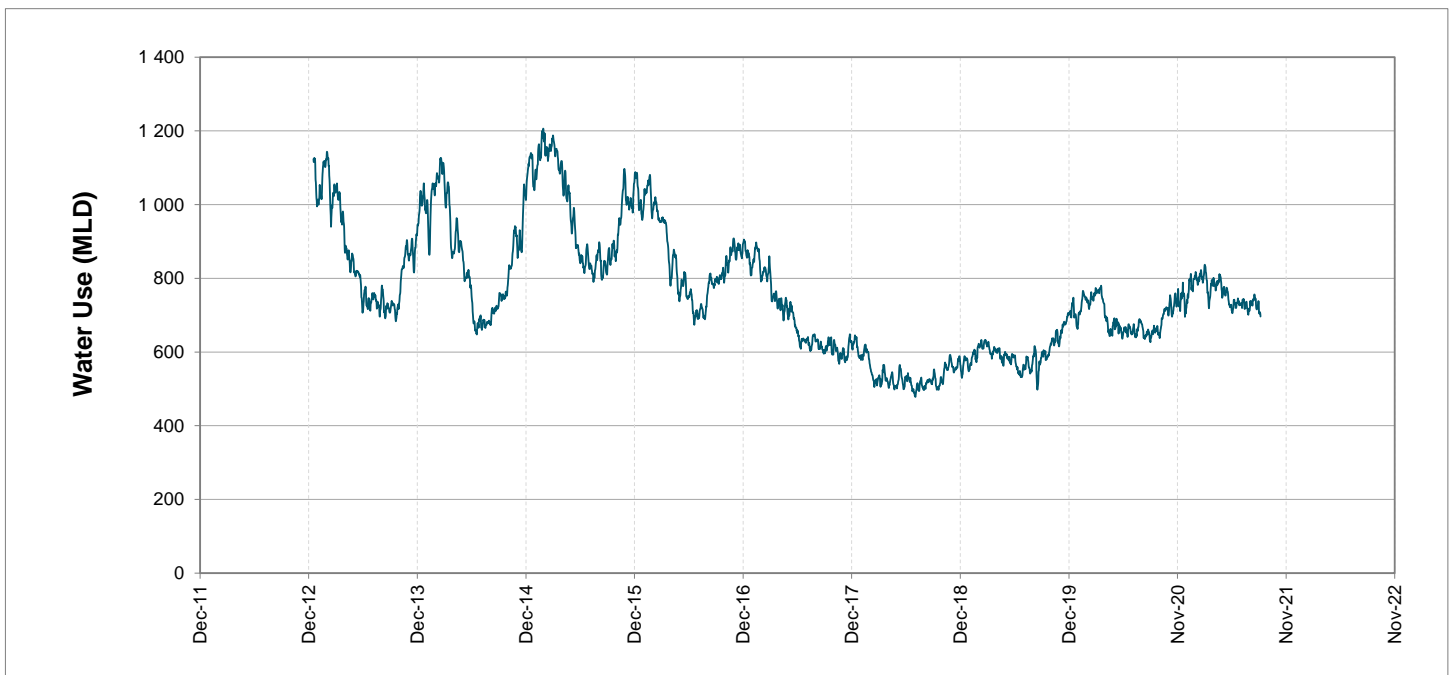
Headline Statistics



Water Production from Different Sources



Overall Water Usage Trend (2010 - Present)



WCWSS means Western Cape Water Supply System

MLD means million litres per day

More information on Water Saving and Restrictions is available on the City of Cape Town's 'ThinkWater' website

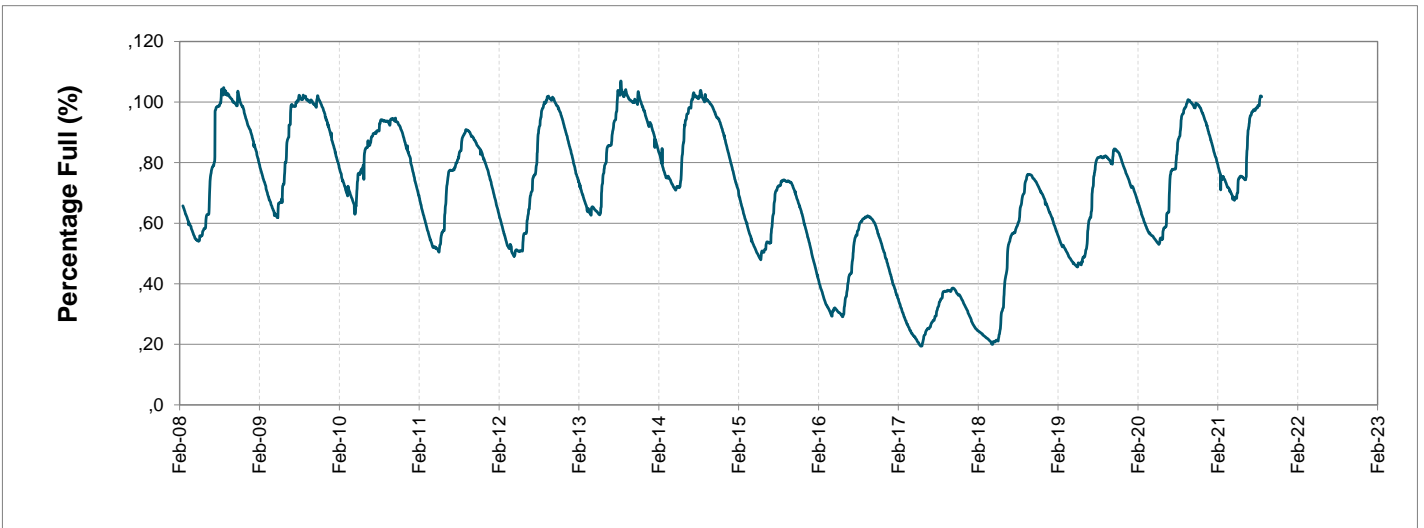
Water Stored in Major Dams (WCWSS)

Overall Percentage Full **101.8%**

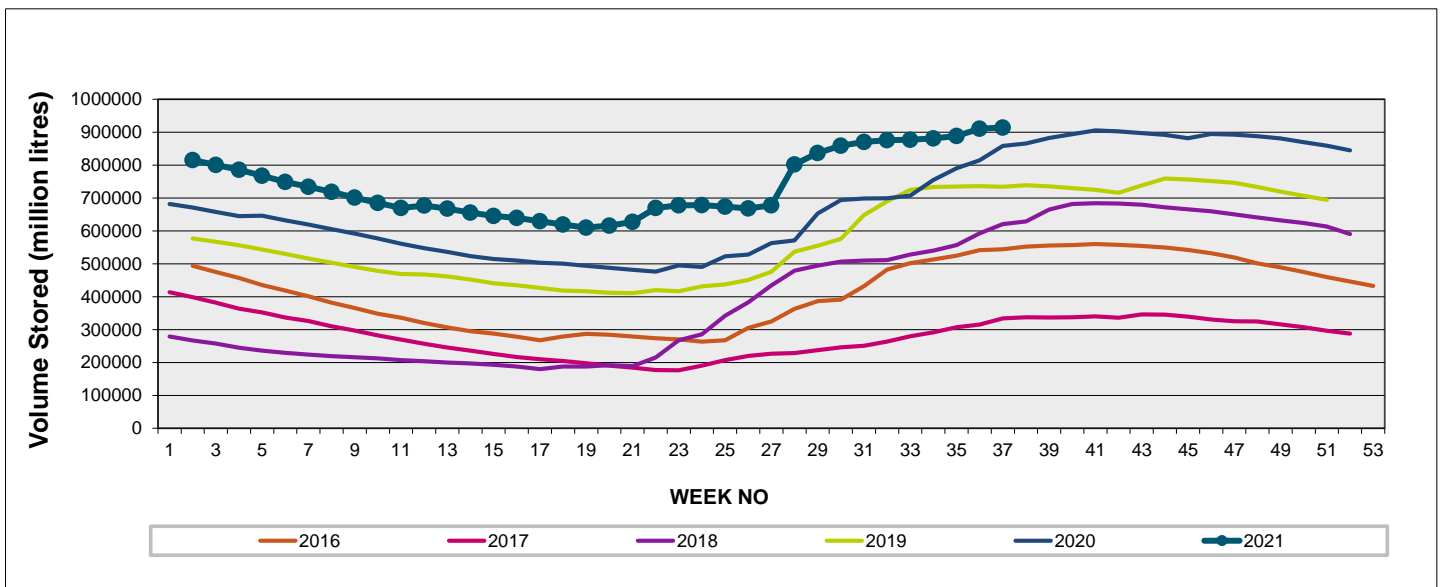
Weekly Change **0.5%**

MAJOR DAMS (WCWSS)	STORAGE						
	CAPACITY	%	%	%	%	%	%
	MI	06 September 2021	Previous week	2020	2019	2018	2017
BERG RIVER	130 010	100.9	101.1	100.9	99.0	98.0	57.6
STEENBRAS LOWER	33 517	102.0	98.2	101.2	100.2	88.3	42.2
STEENBRAS UPPER	31 767	94.5	92.4	101.4	89.5	99.0	101.1
THEEWATERSKLOOF	480 188	103.3	104.1	94.4	72.5	50.1	26.8
VOËLVLEI	164 095	99.9	96.3	92.5	88.2	75.8	25.7
WEMMERSHOEK	58 644	100.2	100.0	93.8	89.6	89.0	41.7
TOTAL STORED	898 221	914 116	910 139	857 296	736 194	605 366	316 494
% STORAGE		101.8%	101.3%	95.4%	82.0%	67.4%	35.2%

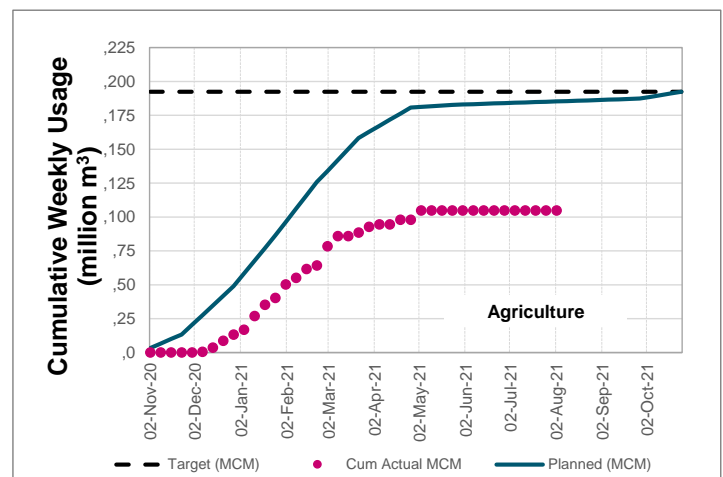
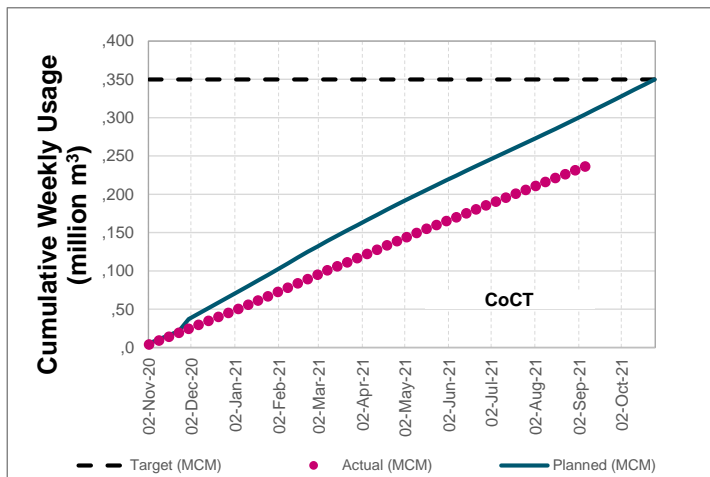
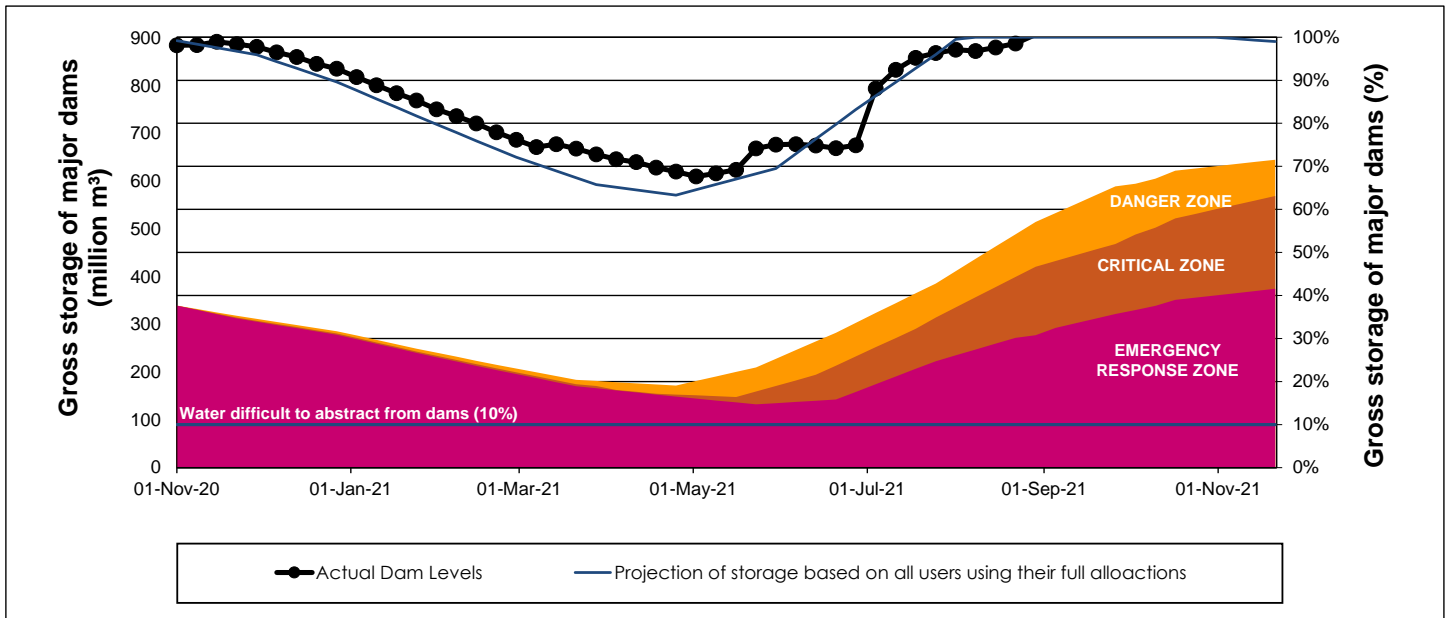
WCWSS Storage Record (2008 - Present)



WCWSS Comparative Storage Graph



WCWSS Dam Storage and Water Use Tracking



Water Stored in Minor Dams

Overall Percentage Full **98.5**

Weekly Change **1.16**

MINOR DAMS	STORAGE						
	CAPACITY	%	%	%	%	%	%
	MI	06 September 2021	Previous week	2020	2019	2018	2017
ALEXANDRA (Table Mountain)	126	69.3	56.6	100.0	54.3	99.3	72.3
DE VILLIERS (Table Mountain)	243	100.3	97.0	100.9	100.2	102.1	81.6
HELY-HUTCHINSON (Table Mount)	925	101.5	100.0	100.8	99.5	101.5	99.8
KLEINPLAATS (Simon's Town)	1 368	100.0	100.0	92.7	83.2	94.7	61.9
LAND-EN-ZEEZICHT (Helderberg)	451	100.0	100.0	90.0	78.8	100.0	75.5
LEWIS GAY (Simon's Town)	182	100.9	100.9	100.9	84.8	84.8	89.1
VICTORIA (Table Mountain)	128	101.5	100.8	101.5	100.8	101.2	100.8
WOODHEAD (Table Mountain)	954	100.9	99.8	100.0	77.2	72.3	93.7
Total Stored	4 377	4312.0	4261.0	4198.5	3698.6	3986.6	3553.6
Percentages stored		98.5	97.3	95.9	84.5	91.1	81.2

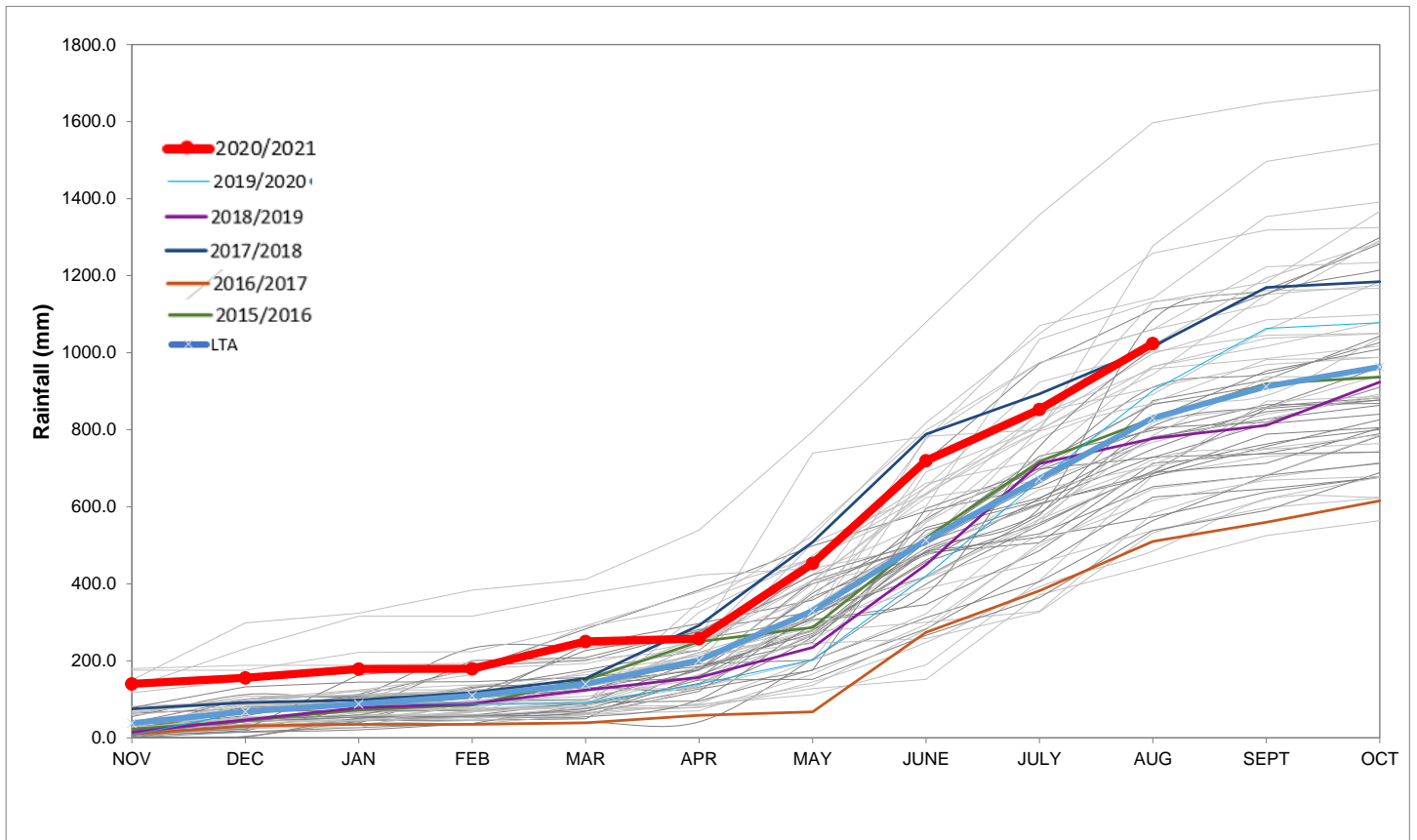
Rainfall Recorded

RAINFALL (mm)	31-Aug	01-Sep	02-Sep	03-Sep	04-Sep	05-Sep	06-Sep	Sep	
								Total*	LT Average
Blackheath Upper	0.0	0.0	0.5	0.2	0.2	2.0		2.9	43.5
Brooklands	2.0	0.0	1.0	8.0	7.0	4.0		22.0	85.7
Newlands	0.0	0.0	4.0	16.5	9.0	4.5		34.0	168.3
Steenbras	0.0	0.0	0.0	1.0	1.0	4.5		6.5	83.6
Table Mountain (Woodhead)	4.0	0.0	10.0	8.0	10.0			32.0	147.2
Theewaterskloof	0.0	0.0	0.0	0.0	0.0	0.0		0.0	41.1
Tygerberg	0.0	0.0	0.5	1.5	0.5	1.1		3.6	47.0
Voëlvlei	0.0	0.0	0.0	8.0	0.0	5.0		13.0	45.1
Wemmershoek	0.0	0.0	0.0	6.0	1.6	7.2		14.8	90.3
Wynberg	0.0	0.0	1.5	0.0	2.3	3.2		7.0	97.8

Notes: *Total/cummulative rainfall for month indicated above
LT: Long Term

Accumulated Monthly Rainfall at Wemmershoek

Note: Wemmershoek station used due to long record and mountainous location



Drinking Water Quality

SAMPLE PASS RATE

Month	Water Quality Compliance (%)	Target (%)
May-20	99.20	98
Jun-20	99.19	98
Jul-20	99.22	98
Aug-20	99.21	98
Sep-20	99.20	98
Oct-20	99.17	98
Nov-20	99.17	98
Dec-20	99.14	98
Jan-21	99.16	98
Feb-21	99.12	98
Mar-21	99.08	98
Apr-21	99.07	98
May-21	98.98	98
Jun-21	99.11	98
Jul-21	99.10	98

Notes:

This table shows CCT drinking water quality compliance according to the South African National Standard 241:2015. Compliance, measured against all prescribed chemical and microbiological components, consistently exceeds the very high CCT target of 98%. (Overall compliance percentages of continuous sampling and analysis are released on a monthly basis.