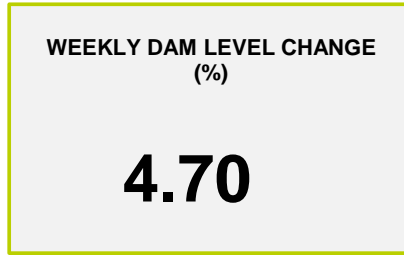
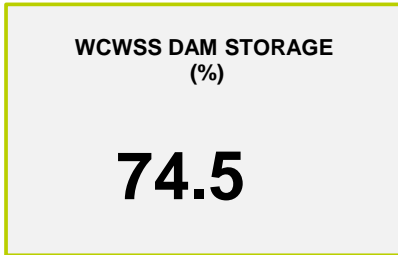
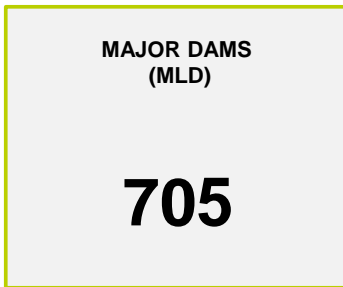




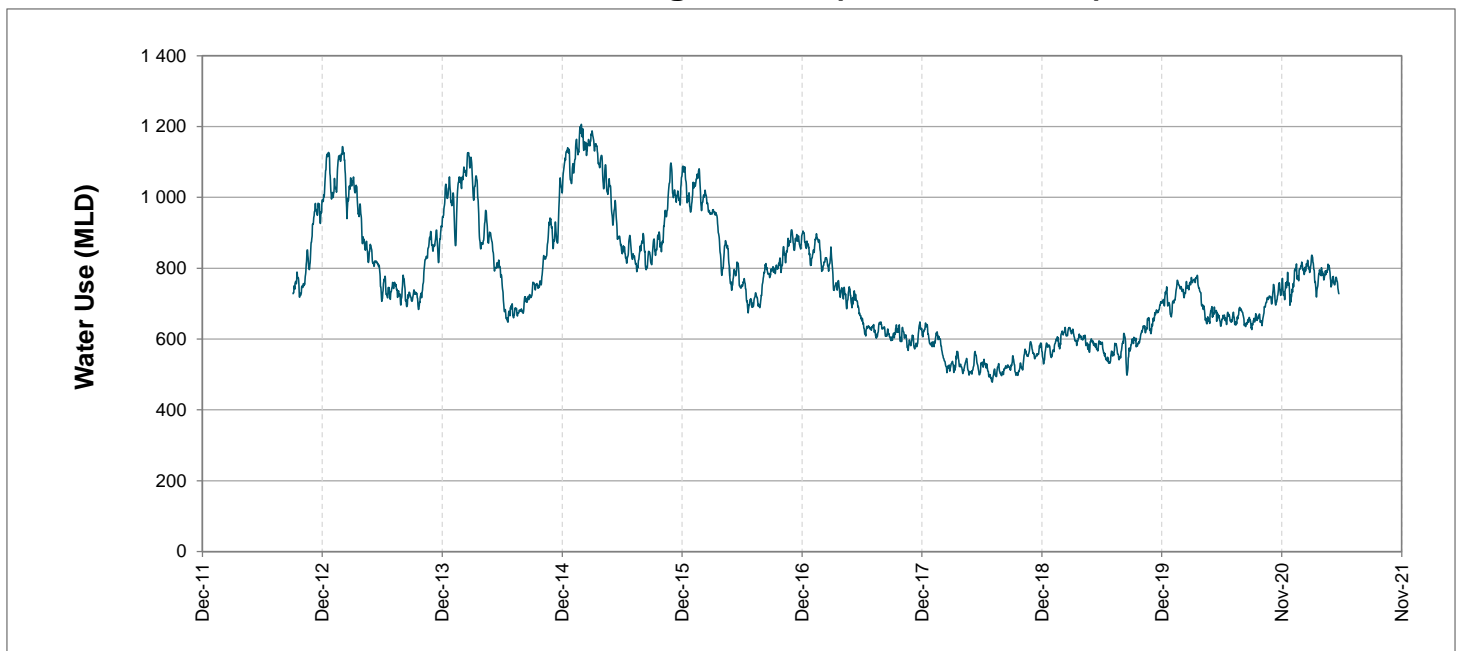
Headline Statistics



Water Production from Different Sources



Overall Water Usage Trend (2010 - Present)



WCWSS means Western Cape Water Supply System

MLD means million litres per day

More information on Water Saving and Restrictions is available on the City of Cape Town's 'ThinkWater' website

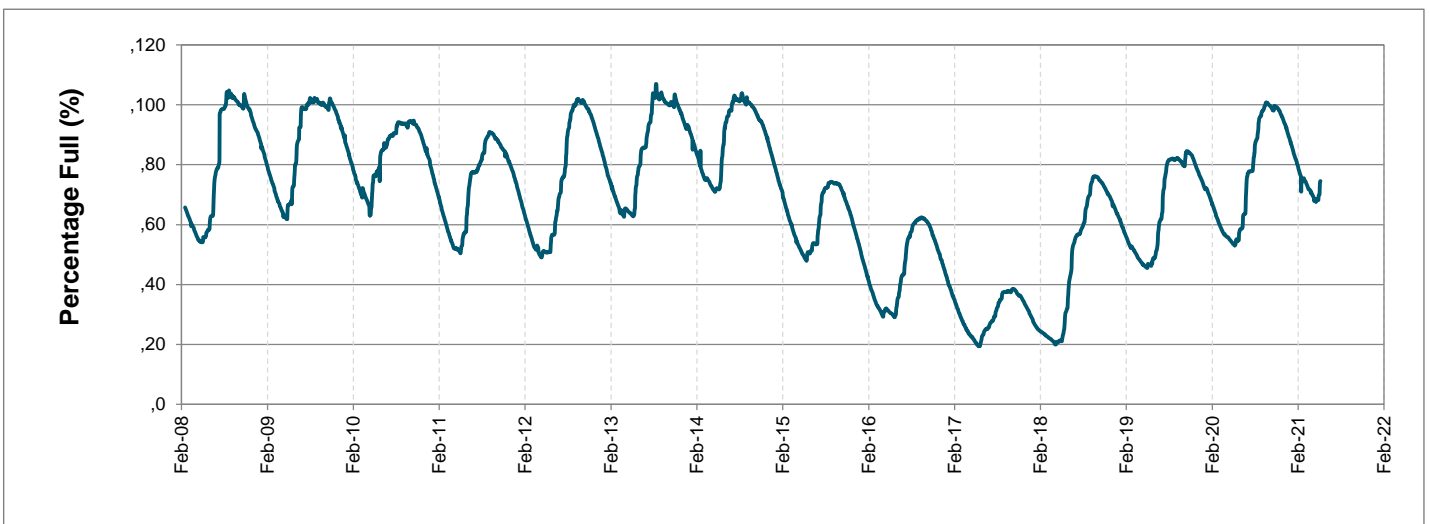
Water Stored in Major Dams (WCWSS)

Overall Percentage Full **74.5%**

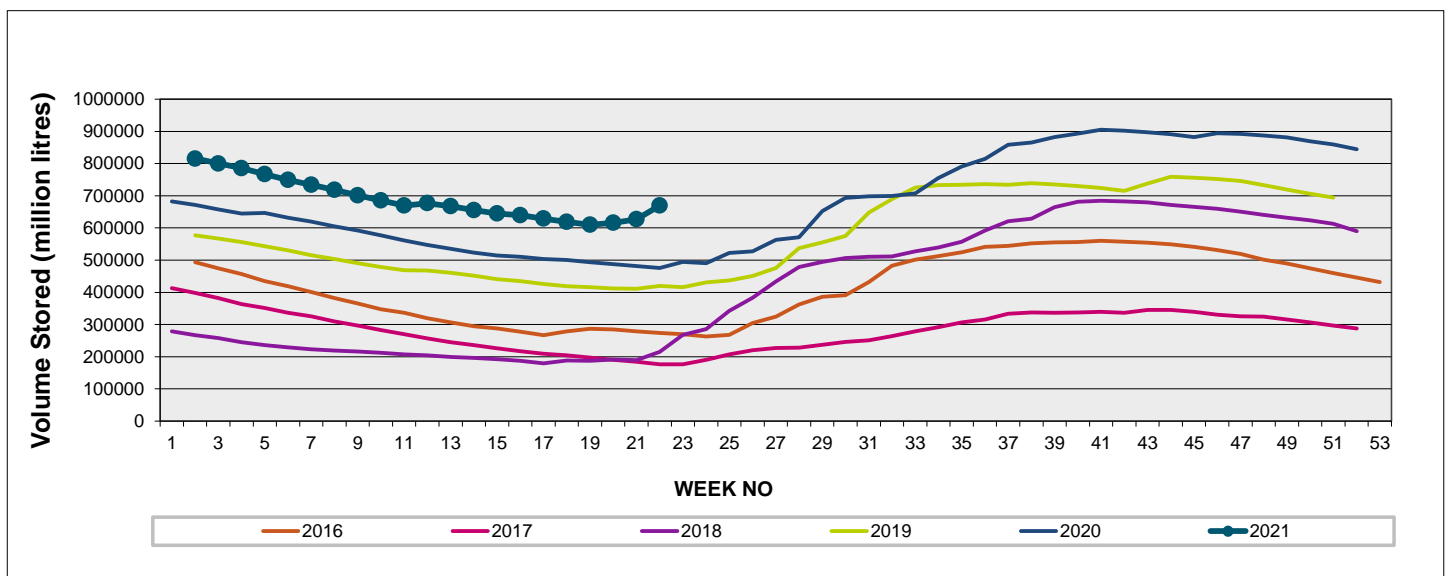
Weekly Change **4.7%**

MAJOR DAMS (WCWSS)	STORAGE						
	CAPACITY	%	%	%	%	%	%
	MI	24 May 2021	Previous week	2020	2019	2018	2017
BERG RIVER	130 010	84.0	76.1	65.0	70.7	41.1	31.4
STEENBRAS LOWER	33 517	62.6	58.0	46.5	40.5	33.4	24.4
STEENBRAS UPPER	31 767	57.2	54.2	96.3	67.1	57.3	56.2
THEEWATERSKLOOF	480 188	80.3	75.2	49.9	37.2	13.6	14.2
VOËLVLEI	164 095	60.2	58.3	49.8	55.4	15.0	15.1
WEMMERSHOEK	58 644	62.9	59.1	41.7	42.5	49.4	36.1
TOTAL STORED	898 221	669 467	626 907	476 327	421 108	201 705	180 658
% STORAGE		74.5%	69.8%	53.0%	46.9%	22.5%	20.1%

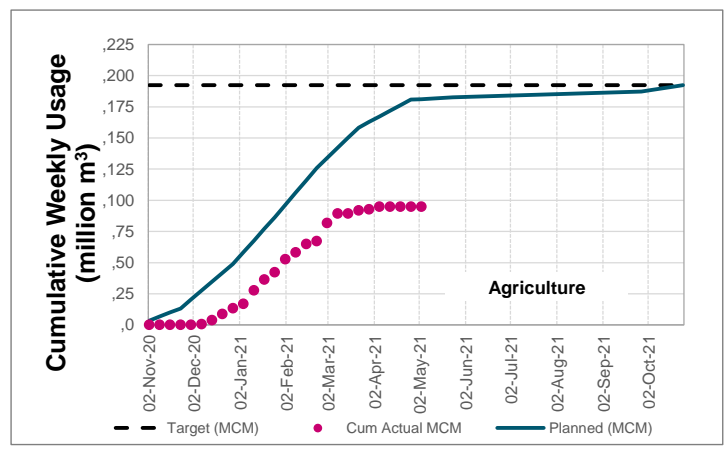
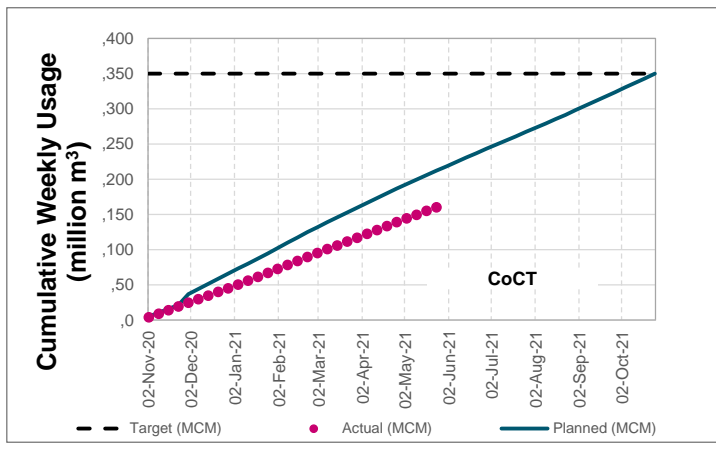
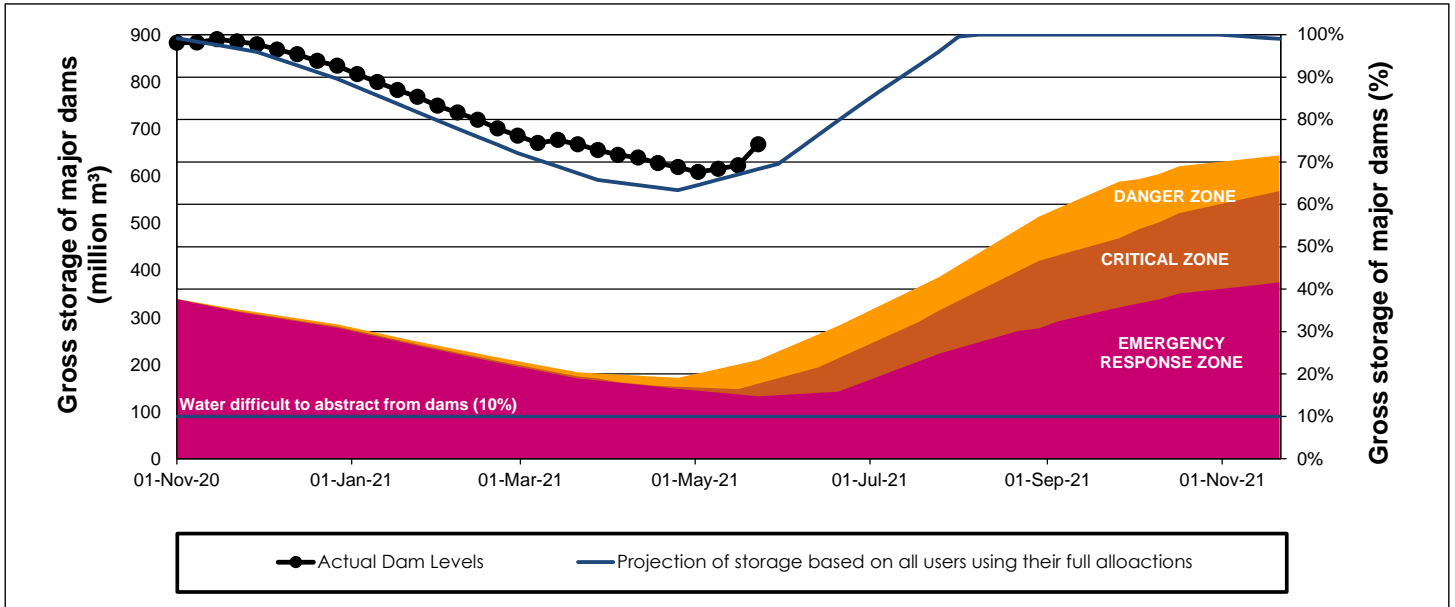
WCWSS Storage Record (2008 - Present)



WCWSS Comparative Storage Graph



WCWSS Dam Storage and Water Use Tracking



Water Stored in Minor Dams

Overall Percentage Full **48.8**

Weekly Change **7.51**

MINOR DAMS	STORAGE						
	CAPACITY	%	%	%	%	%	%
	MI	24 May 2021	Previous week	2020	2019	2018	2017
ALEXANDRA (Table Mountain)	126	6.8	0.0	33.0	0.0	79.0	30.3
DE VILLIERS (Table Mountain)	243	58.2	51.9	93.6	64.9	48.7	41.8
HELY-HUTCHINSON (Table Mount)	925	32.7	0.0	13.0	17.2	66.6	98.1
KLEINPLAATS (Simon's Town)	1 368	45.4	45.5	36.5	43.4	37.1	39.4
LAND-EN-ZEEZICHT (Helderberg)	451	69.5	67.4	61.9	98.5	90.7	68.9
LEWIS GAY (Simon's Town)	182	58.4	50.7	5.0	0.0	73.5	12.6
VICTORIA (Table Mountain)	128	11.5	0.0	72.4	8.6	22.1	68.5
WOODHEAD (Table Mountain)	954	68.1	71.7	97.7	58.7	59.0	72.1
Total Stored	4 377	2135.0	1806.3	2193.8	1918.2	2466.5	2685.4
Percentages stored		48.8	41.3	50.1	43.8	56.4	61.4

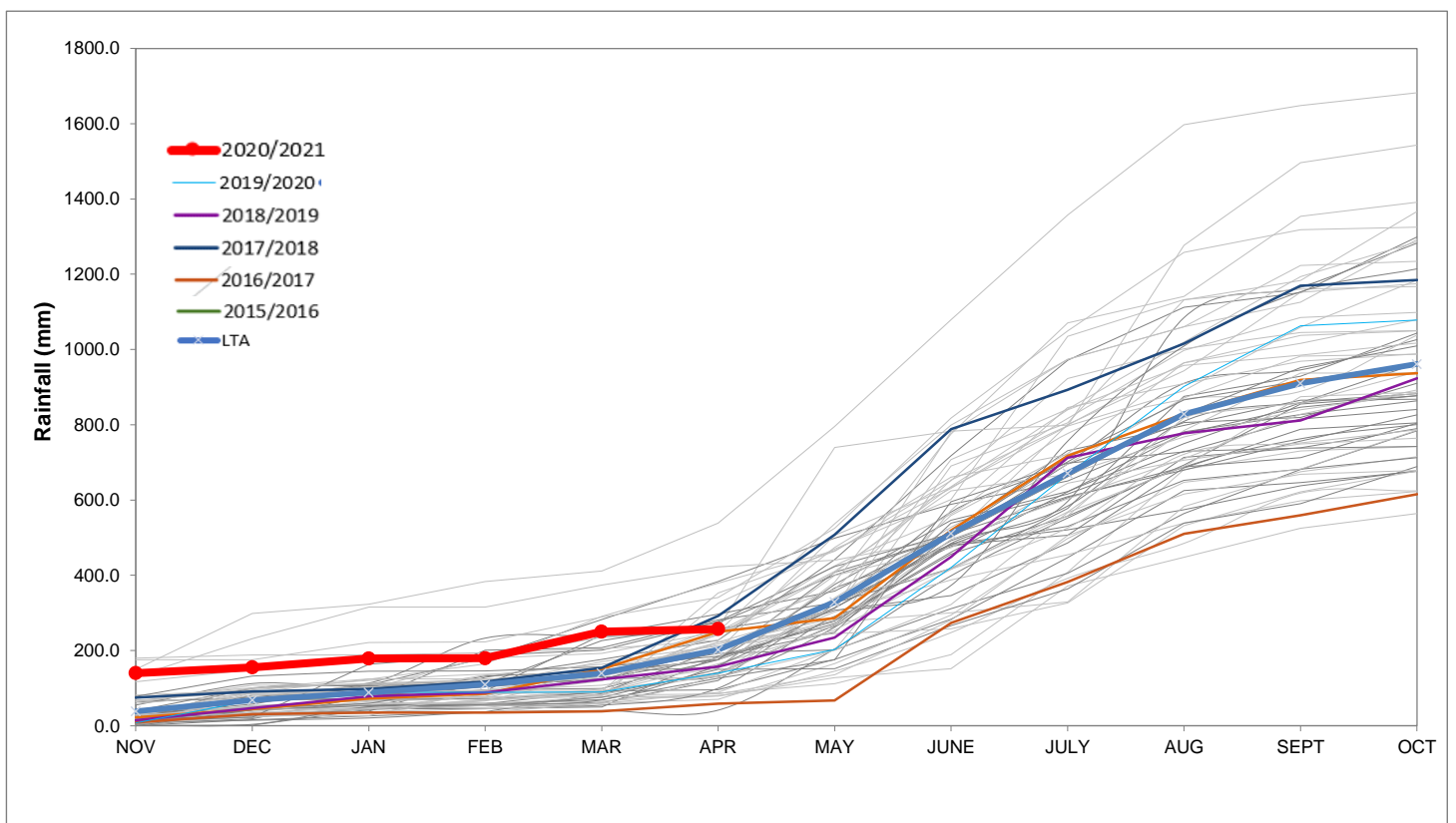
Rainfall Recorded

RAINFALL (mm)	18-May	19-May	20-May	21-May	22-May	23-May	24-May	May	
								Total*	LT Average
Blackheath Upper	0.0	16.0	32.0	3.0	0.0	0.0		99.0	55.7
Brooklands	0.0	34.0	10.0	0.0	2.0	2.0		93.0	107.1
Newlands	0.0	42.7	63.1	0.0	0.0	0.0		166.7	210.0
Steenbras	0.0	27.5	31.5	0.7	0.0	0.0		153.5	116.9
Table Mountain (Woodhead)	0.0	45.0	43.5	0.2	0.0			202.9	188.7
Theewaterskloof	0.0	10.0	34.2	0.4	0.0	0.0		167.4	48.5
Tygerberg	0.0	10.0	38.0	0.0	0.0	0.0		79.2	60.0
Voëlvlei	0.0	4.0	66.0	5.0	0.0	0.0		109.1	69.2
Wemmershoek	0.0	22.5	65.5	2.5	0.0	0.0		174.9	120.1
Wynberg	0.0	22.7	20.6	0.6	0.0	0.0		72.6	142.8

Notes: *Total/cummulative rainfall for month indicated above
LT: Long Term

Accumulated Monthly Rainfall at Wemmershoek

Note: Wemmershoek station used due to long record and mountainous location



Drinking Water Quality

SAMPLE PASS RATE

Month	Water Quality Compliance (%)	Target (%)
Feb-20	99.08	98
Mar-20	99.17	98
Apr-20	99.16	98
May-20	99.20	98
Jun-20	99.19	98
Jul-20	99.22	98
Aug-20	99.21	98
Sep-20	99.20	98
Oct-20	99.17	98
Nov-20	99.17	98
Dec-20	99.14	98
Jan-21	99.16	98
Feb-21	99.12	98
Mar-21	99.08	98
Apr-21	99.07	98

Notes:

This table shows CCT drinking water quality compliance according to the South African National Standard 241:2015. Compliance, measured against all prescribed chemical and microbiological components, consistently exceeds the very high CCT target of 98%. (Overall compliance percentages of continuous sampling and analysis are released on a monthly basis.)