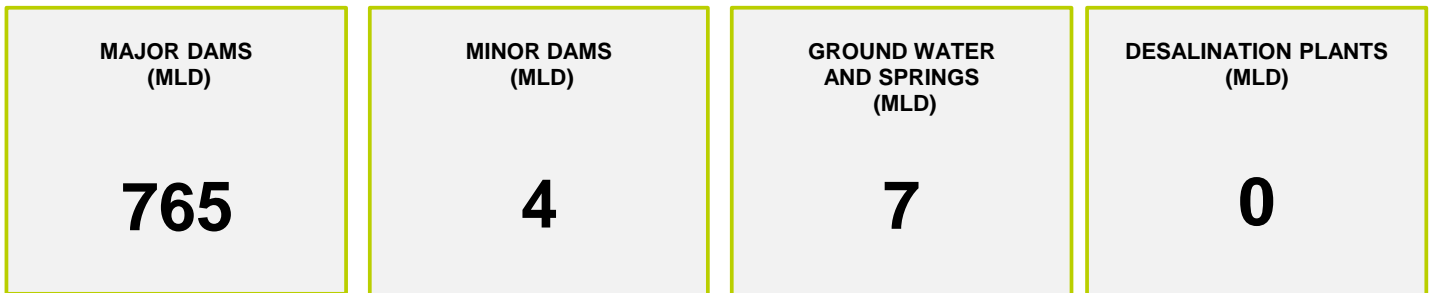




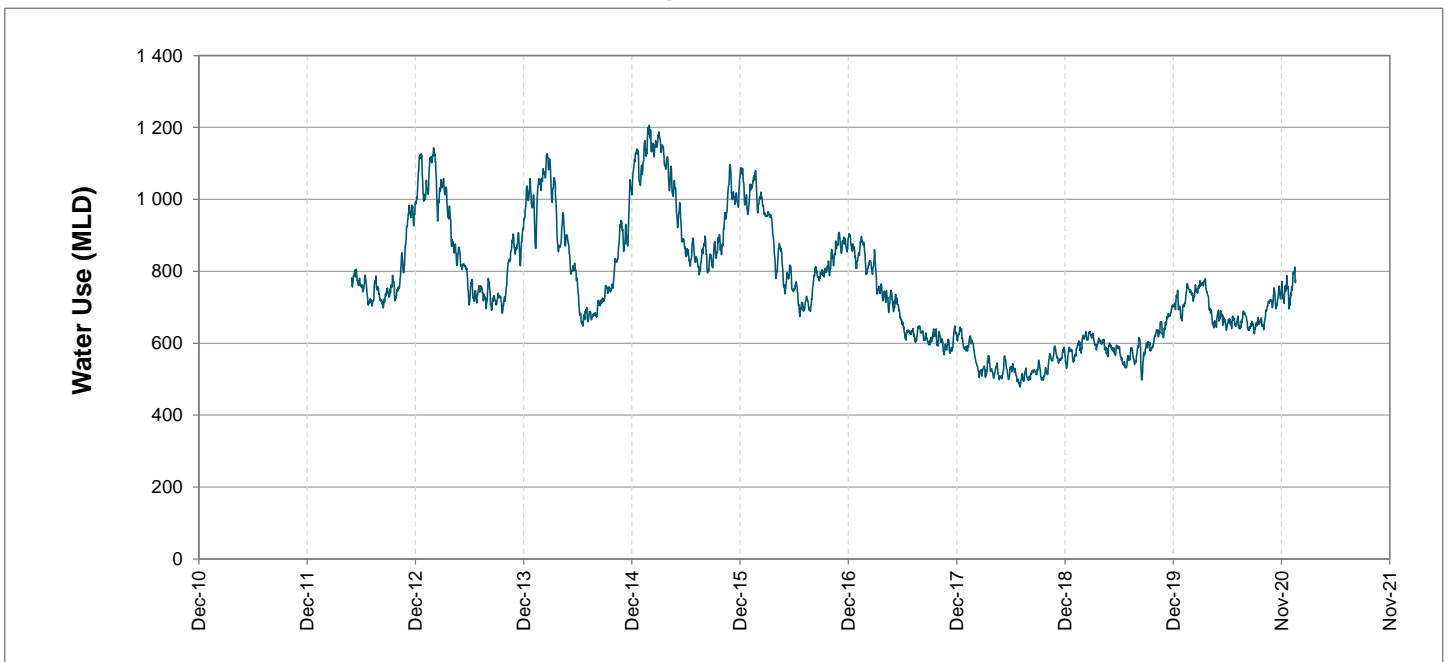
## Headline Statistics



## Water Production from Different Sources



## Overall Water Usage Trend (2010 - Present)



WCSS means Western Cape Water Supply System

MLD means million litres per day

More information on Water Saving and Restrictions is available on the City of Cape Town's 'ThinkWater' website

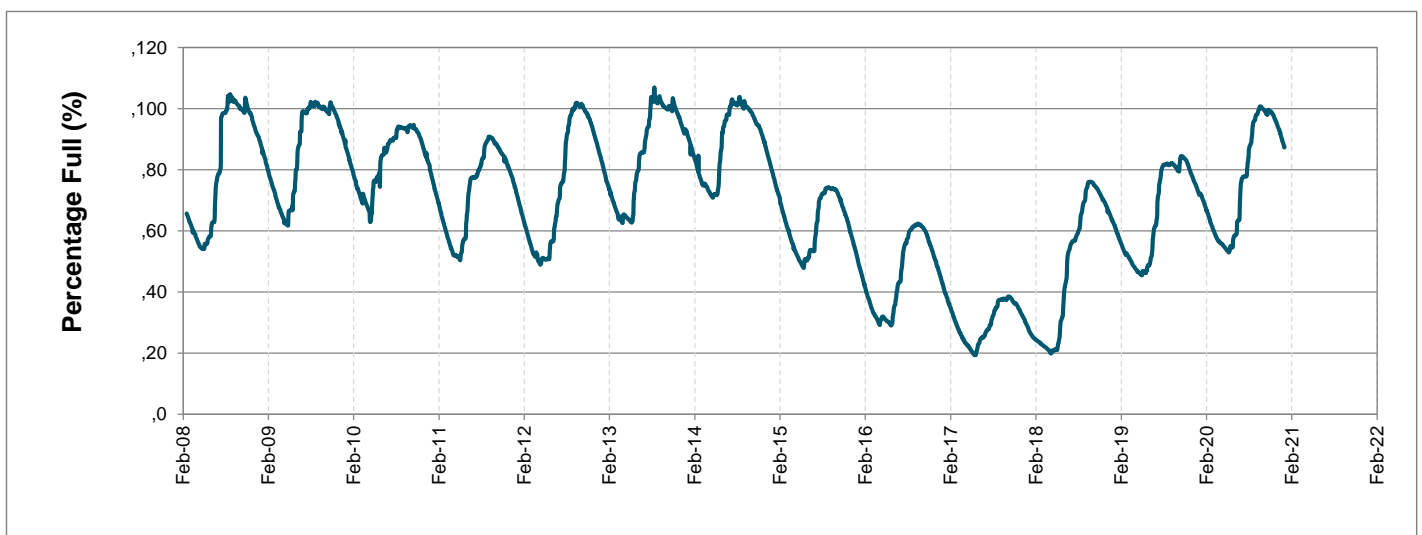
# Water Stored in Major Dams (WCWSS)

Overall Percentage Full **87.5%**

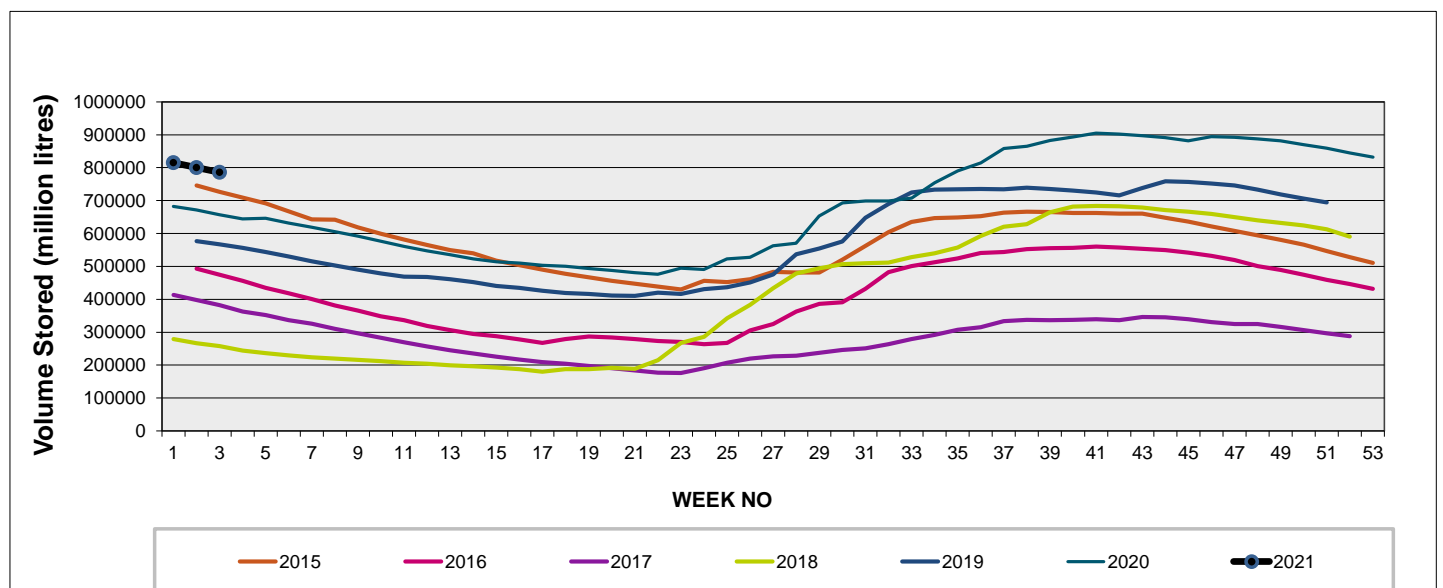
Weekly Change **-1.6%**

MAJOR DAMS (WCWSS)	STORAGE						
	CAPACITY	%	%	%	%	%	%
	MI	18 January 2021	Previous week	2020	2019	2018	2017
BERG RIVER	130 010	88.2	90.1	86.8	86.2	55.9	52.8
STEENBRAS LOWER	33 517	82.0	84.5	79.1	62.9	46.5	39.0
STEENBRAS UPPER	31 767	73.8	73.3	99.3	70.7	90.3	70.1
THEEWATERSKLOOF	480 188	90.1	91.6	63.8	48.2	15.4	36.5
VOËLVLEI	164 095	82.7	84.7	76.0	79.4	18.9	47.5
WEMMERSHOEK	58 644	87.8	89.5	75.5	73.4	52.4	37.0
<b>TOTAL STORED</b>	<b>898 221</b>	<b>785 532</b>	<b>800 189</b>	<b>646 524</b>	<b>560 492</b>	<b>252 519</b>	<b>378 987</b>
<b>% STORAGE</b>		<b>87.5%</b>	<b>89.1%</b>	<b>72.0%</b>	<b>62.4%</b>	<b>28.1%</b>	<b>42.2%</b>

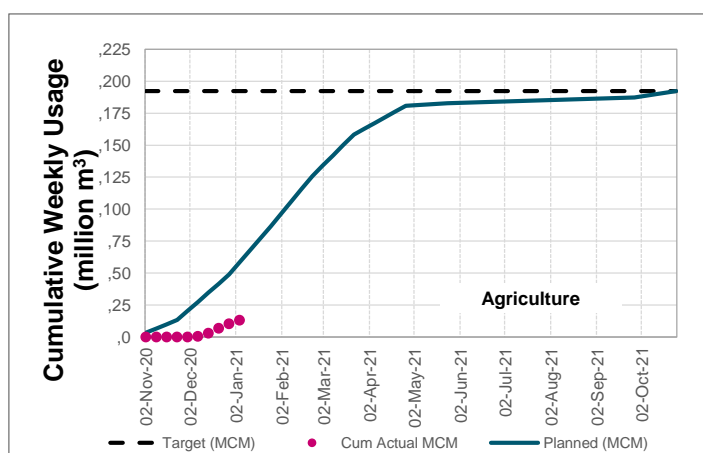
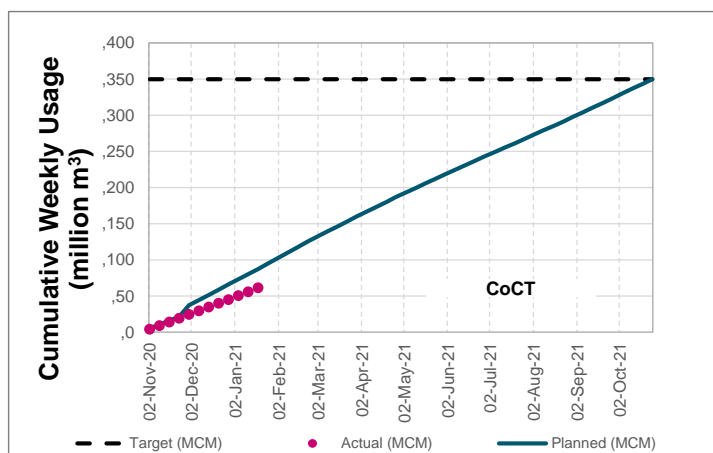
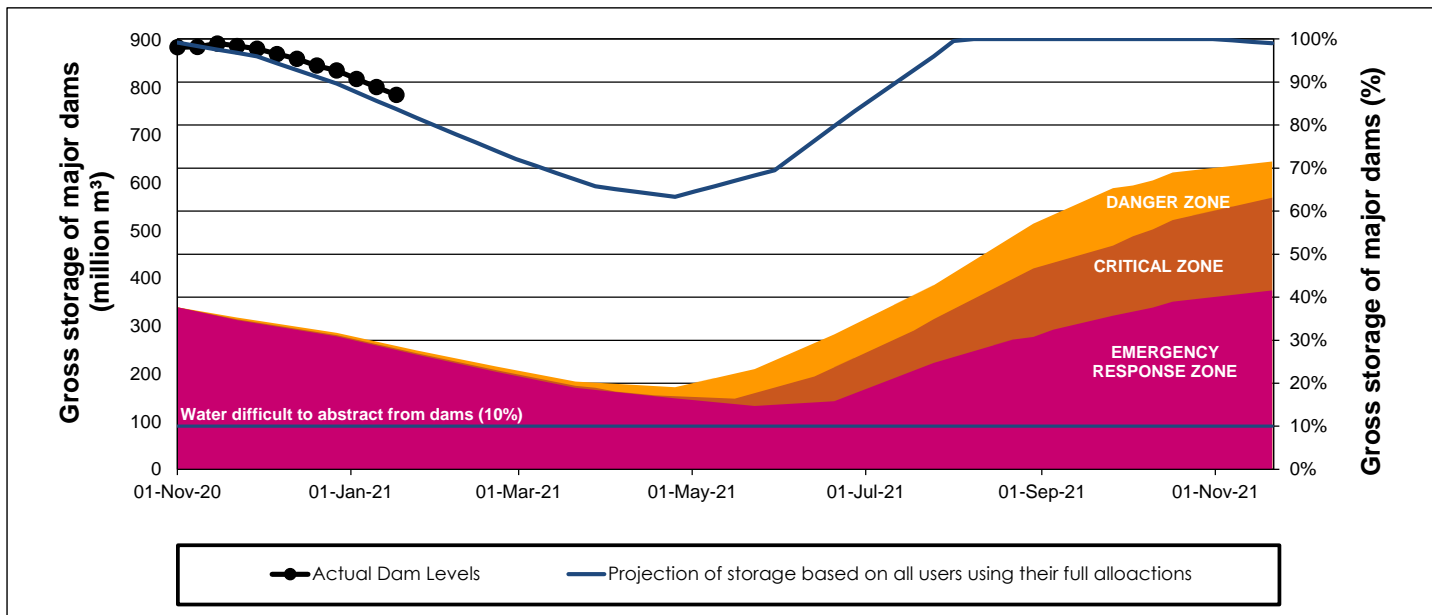
## WCWSS Storage Record (2008 - Present)



## WCWSS Comparative Storage Graph



# WCWSS Dam Storage and Water Use Tracking



## Water Stored in Minor Dams

Overall Percentage Full **68.4**

Weekly Change **-1.52**

MINOR DAMS	STORAGE						
	CAPACITY	%	%	%	%	%	%
	MI	18 January 2021	Previous week	2020	2019	2018	2017
ALEXANDRA (Table Mountain)	126	53.6	56.0	43.4	46.7	43.5	32.6
DE VILLIERS (Table Mountain)	243	52.4	58.9	98.6	38.0	79.7	64.8
HELY-HUTCHINSON (Table Mountain)	925	32.9	38.4	64.5	98.6	99.0	96.6
KLEINPLAATS (Simon's Town)	1 368	77.3	82.6	65.2	73.7	51.3	57.0
LAND-EN-ZEEZICHT (Helderberg)	451	87.4	90.8	81.3	95.2	100.0	85.4
LEWIS GAY (Simon's Town)	182	76.4	62.6	14.7	35.2	98.2	53.2
VICTORIA (Table Mountain)	128	89.7	90.8	88.2	84.7	90.8	87.5
WOODHEAD (Table Mountain)	954	86.7	79.9	68.0	80.4	94.0	97.5
<b>Total Stored</b>	<b>4 377</b>	<b>2994.5</b>	<b>3060.8</b>	<b>2913.0</b>	<b>3412.2</b>	<b>3486.5</b>	<b>3373.0</b>
<b>Percentages stored</b>		<b>68.4</b>	<b>69.9</b>	<b>66.6</b>	<b>78.0</b>	<b>79.7</b>	<b>77.1</b>

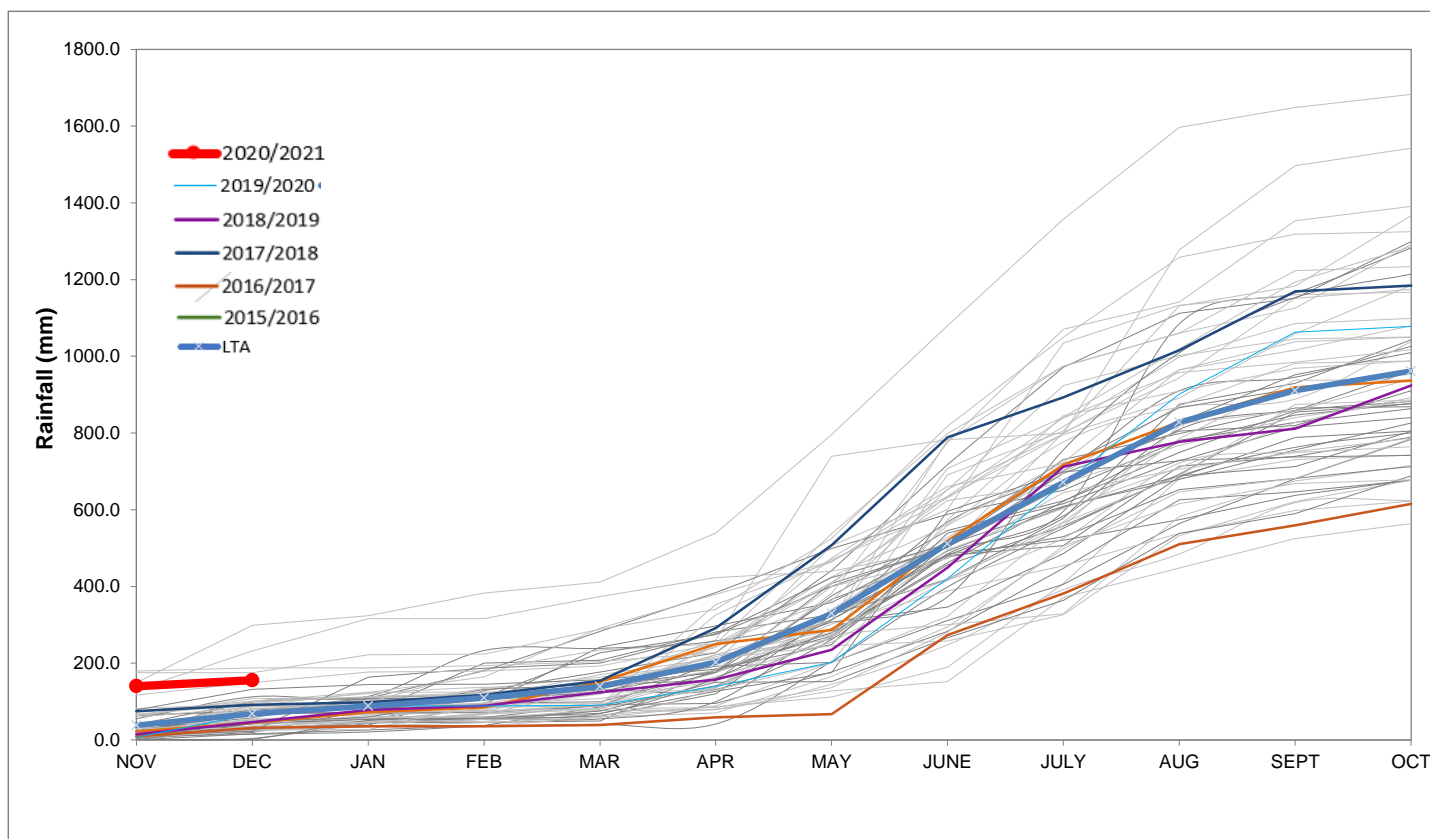
# Rainfall Recorded

RAINFALL (mm)	12-Jan	13-Jan	14-Jan	15-Jan	16-Jan	17-Jan	18-Jan	Jan	
								Total*	LT Average
Blackheath Upper	0.0	0.0	0.0	3.0	0.0	0.0		3.0	15.3
Brooklands	0.0	0.0	3.5	0.0	0.0	0.0		3.5	27.7
Newlands	0.0	0.0	0.3	15.2	0.0	0.0		15.7	37.4
Steenbras	0.0	0.0	0.0	8.0	0.0	0.0		8.9	29.5
Table Mountain (Woodhead)	0.0	0.0	15.0	0.0	0.0			15.0	52.7
Theewaterskloof	0.0	0.0	0.0	2.5	0.0	0.0		9.5	24.9
Tygerberg	0.0	0.0	0.0	2.7	0.0	0.0		2.7	13.0
Voëlvlei	0.0	0.0	0.0	2.0	0.0	0.0		2.0	13.2
Wemmershoek	0.0	0.0	0.0	11.9	0.0	0.0		21.9	20.6
Wynberg	0.0	0.0	0.0	5.8	0.0	0.0		5.8	21.2

Notes: \*Total/cumulative rainfall for month indicated above  
LT: Long Term

# Accumulated Monthly Rainfall at Wemmershoek

Note: Wemmershoek station used due to long record and mountainous location



## Drinking Water Quality

### SAMPLE PASS RATE

Month	Water Quality Compliance (%)	Target (%)
Oct-19	99.03	98
Nov-19	99.14	98
Dec-19	99.09	98
Jan-20	99.07	98
Feb-20	99.08	98
Mar-20	99.17	98
Apr-20	99.16	98
May-20	99.20	98
Jun-20	99.19	98
Jul-20	99.22	98
Aug-20	99.21	98
Sep-20	99.20	98
Oct-20	99.17	98
Nov-20	99.17	98
Dec-20	99.14	98

#### Notes:

This table shows CCT drinking water quality compliance according to the South African National Standard 241:2015. Compliance, measured against all prescribed chemical and microbiological components, consistently exceeds the very high CCT target of 98%. (Overall compliance percentages of continuous sampling and analysis are released on a monthly basis.)