



## Headline Statistics

WCSS DAM STORAGE  
(%)

**89.1**

WEEKLY DAM LEVEL CHANGE  
(%)

**-1.70**

AVERAGE TOTAL  
DAILY WATER USE  
(MLD)

**793**

## Water Production from Different Sources

MAJOR DAMS  
(MLD)

**782**

MINOR DAMS  
(MLD)

**5**

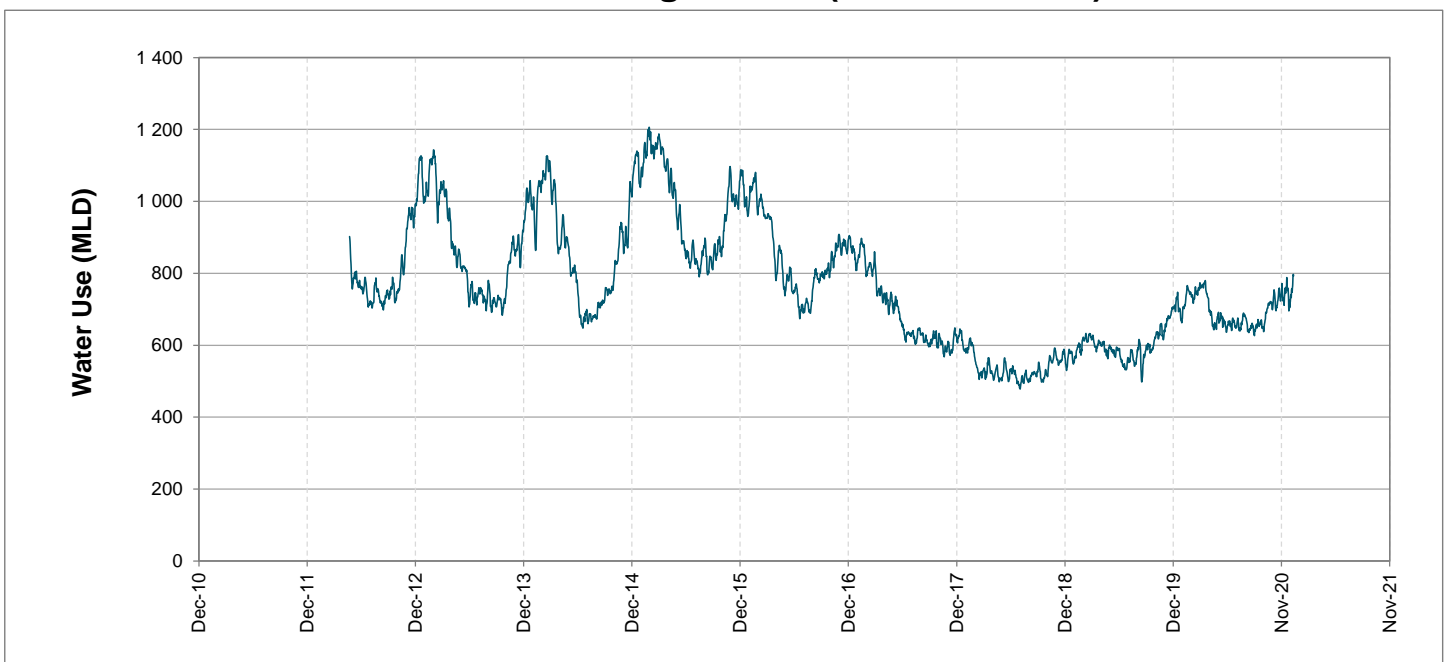
GROUND WATER  
AND SPRINGS  
(MLD)

**6**

DESALINATION PLANTS  
(MLD)

**0**

## Overall Water Usage Trend (2010 - Present)



WCSS means Western Cape Water Supply System

MLD means million litres per day

More information on Water Saving and Restrictions is available on the City of Cape Town's 'ThinkWater' website

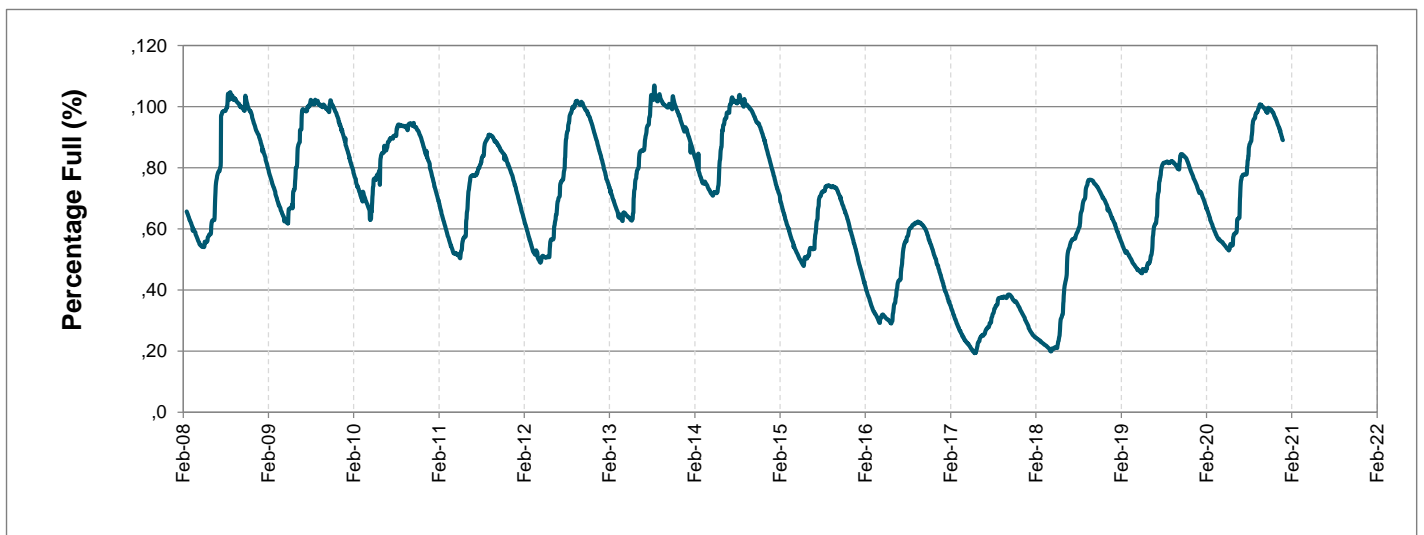
# Water Stored in Major Dams (WCWSS)

Overall Percentage Full **89.1%**

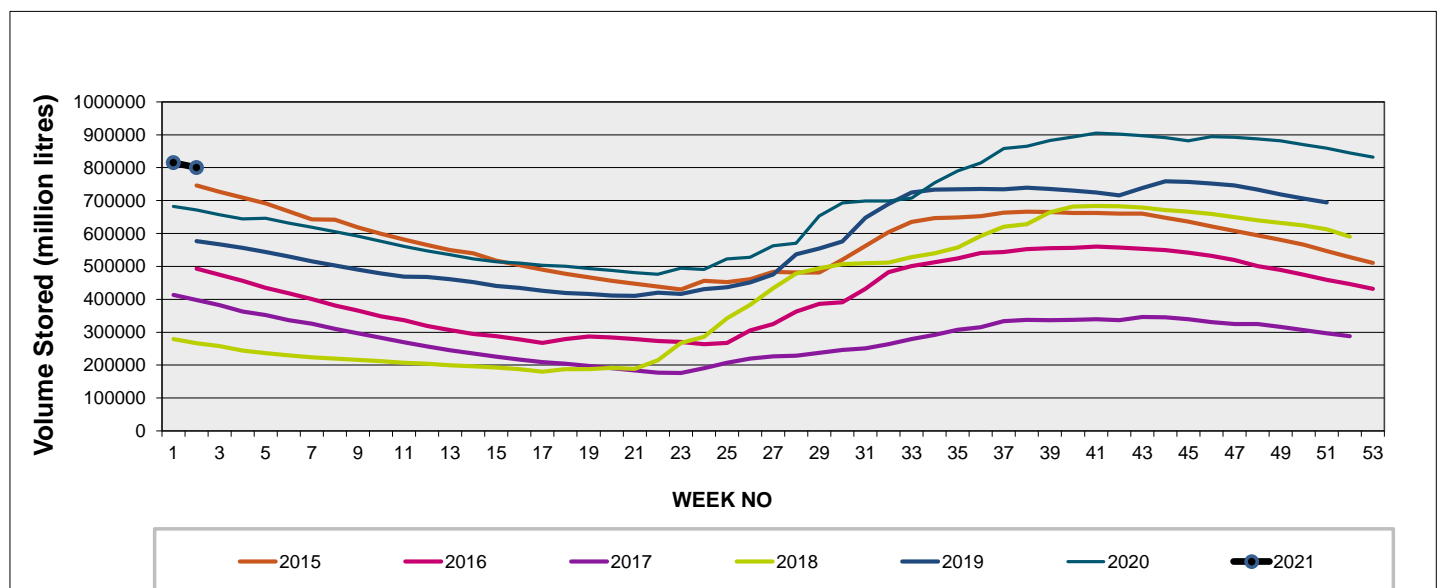
Weekly Change **-1.7%**

| MAJOR DAMS (WCWSS)  | STORAGE        |                 |                |                |                |                |                |
|---------------------|----------------|-----------------|----------------|----------------|----------------|----------------|----------------|
|                     | CAPACITY       | %               | %              | %              | %              | %              | %              |
|                     | MI             | 11 January 2021 | Previous week  | 2020           | 2019           | 2018           | 2017           |
| BERG RIVER          | 130 010        | 90.1            | 92.0           | 88.7           | 87.0           | 57.4           | 55.1           |
| STEENBRAS LOWER     | 33 517         | 84.5            | 86.9           | 81.2           | 64.6           | 48.2           | 35.5           |
| STEENBRAS UPPER     | 31 767         | 73.3            | 76.0           | 99.6           | 69.6           | 91.8           | 75.4           |
| THEEWATERSKLOOF     | 480 188        | 91.6            | 93.1           | 65.2           | 49.1           | 16.4           | 38.1           |
| VOËLVLEI            | 164 095        | 84.7            | 86.5           | 77.6           | 81.4           | 20.3           | 49.0           |
| WEMMERSHOEK         | 58 644         | 89.5            | 91.3           | 77.8           | 75.2           | 52.3           | 38.5           |
| <b>TOTAL STORED</b> | <b>898 221</b> | <b>800 189</b>  | <b>815 139</b> | <b>660 318</b> | <b>570 509</b> | <b>262 801</b> | <b>393 492</b> |
| <b>% STORAGE</b>    |                | <b>89.1%</b>    | <b>90.8%</b>   | <b>73.5%</b>   | <b>63.5%</b>   | <b>29.3%</b>   | <b>43.8%</b>   |

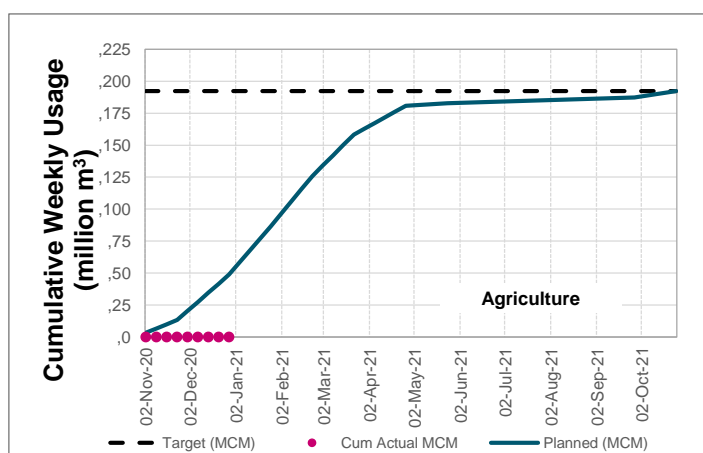
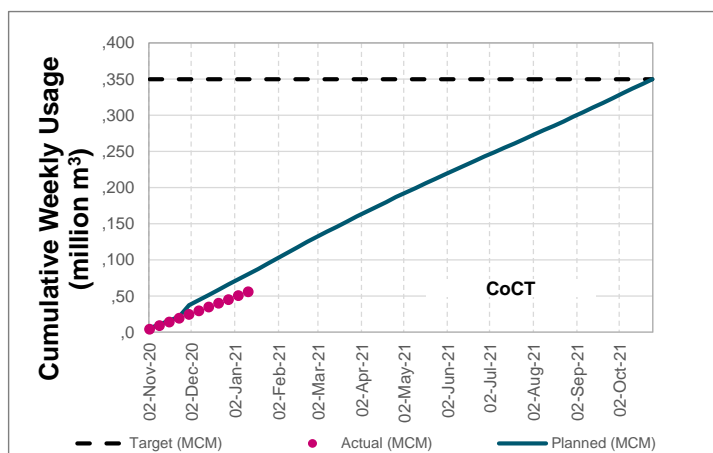
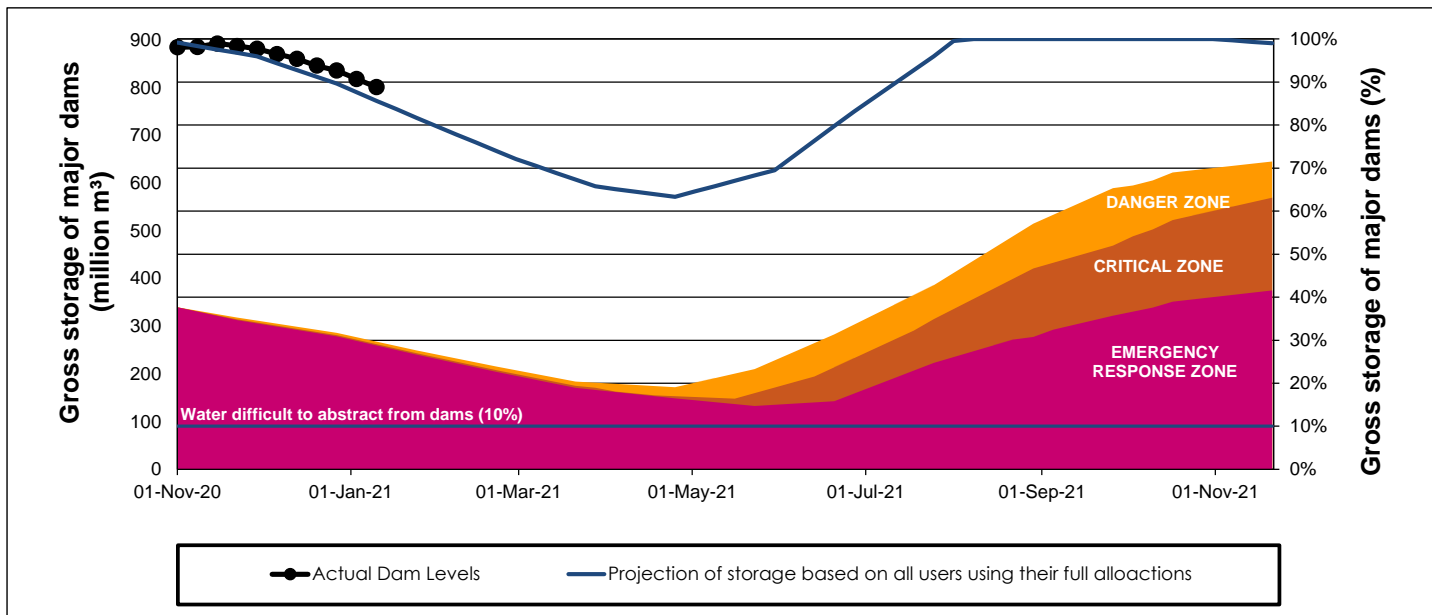
## WCWSS Storage Record (2008 - Present)



## WCWSS Comparative Storage Graph



# WCWSS Dam Storage and Water Use Tracking



## Water Stored in Minor Dams

Overall Percentage Full **69.9**

Weekly Change **-1.73**

| MINOR DAMS                       | STORAGE      |                 |               |               |               |               |               |
|----------------------------------|--------------|-----------------|---------------|---------------|---------------|---------------|---------------|
|                                  | CAPACITY     | %               | %             | %             | %             | %             | %             |
|                                  | MI           | 11 January 2021 | Previous week | 2020          | 2019          | 2018          | 2017          |
| ALEXANDRA (Table Mountain)       | 126          | 56.0            | 58.6          | 45.1          | 48.5          | 45.3          | 33.0          |
| DE VILLIERS (Table Mountain)     | 243          | 58.9            | 66.1          | 99.0          | 43.5          | 80.1          | 65.9          |
| HELY-HUTCHINSON (Table Mountain) | 925          | 38.4            | 44.5          | 64.9          | 98.3          | 100.2         | 97.6          |
| KLEINPLAATS (Simon's Town)       | 1 368        | 82.6            | 87.2          | 69.4          | 75.5          | 54.0          | 59.7          |
| LAND-EN-ZEEZICHT (Helderberg)    | 451          | 90.8            | 93.5          | 84.4          | 98.4          | 100.0         | 84.3          |
| LEWIS GAY (Simon's Town)         | 182          | 62.6            | 51.9          | 17.0          | 43.6          | 96.3          | 51.4          |
| VICTORIA (Table Mountain)        | 128          | 90.8            | 92.3          | 90.4          | 85.4          | 93.5          | 89.3          |
| WOODHEAD (Table Mountain)        | 954          | 79.9            | 73.7          | 75.5          | 77.8          | 93.7          | 98.2          |
| <b>Total Stored</b>              | <b>4 377</b> | <b>3060.8</b>   | <b>3136.5</b> | <b>3068.3</b> | <b>3453.2</b> | <b>3533.3</b> | <b>3420.7</b> |
| <b>Percentages stored</b>        |              | <b>69.9</b>     | <b>71.7</b>   | <b>70.1</b>   | <b>78.9</b>   | <b>80.7</b>   | <b>78.2</b>   |

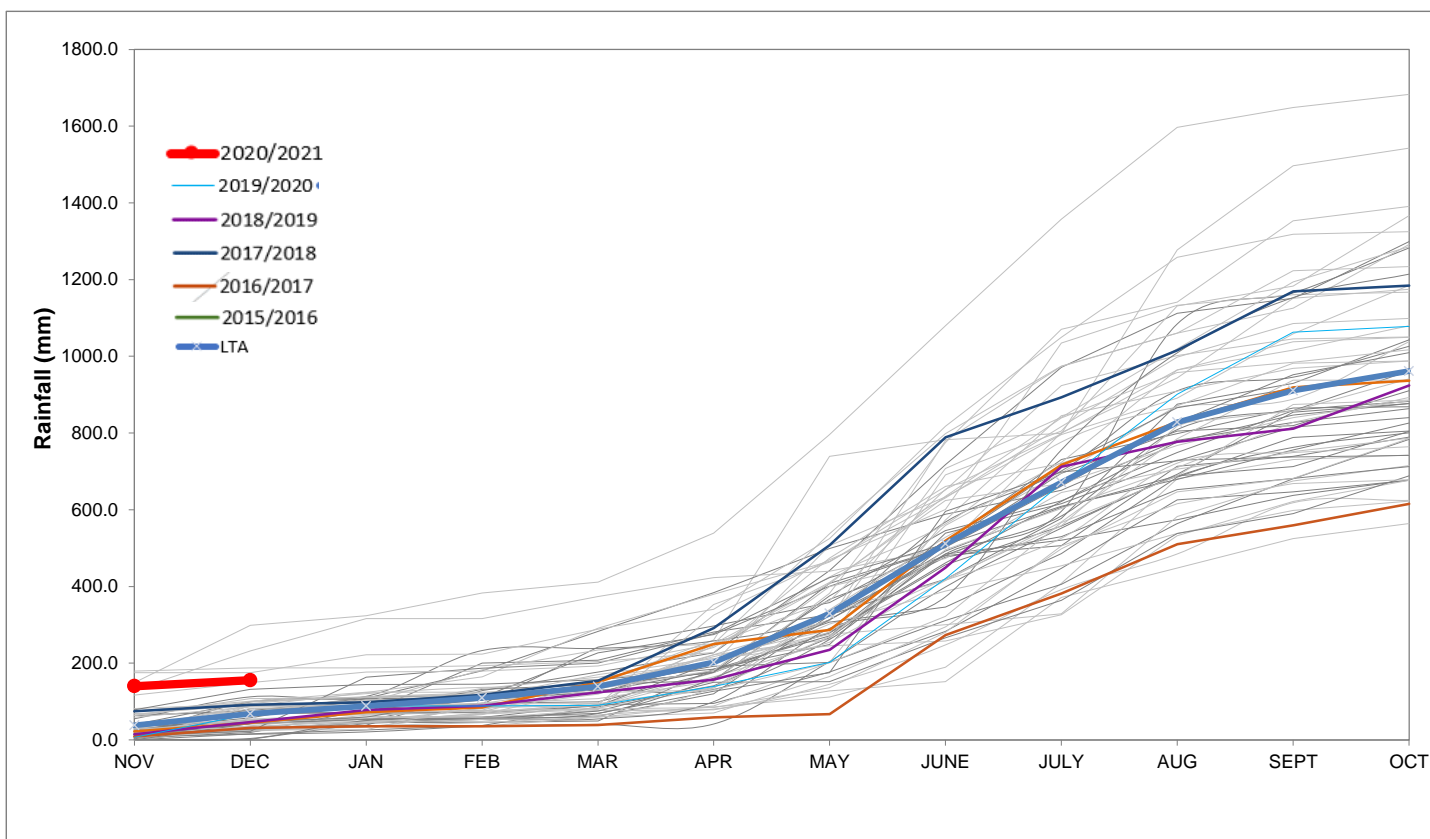
## Rainfall Recorded

| RAINFALL (mm)             | 05-Jan | 06-Jan | 07-Jan | 08-Jan | 09-Jan | 10-Jan | 11-Jan | Jan    |            |
|---------------------------|--------|--------|--------|--------|--------|--------|--------|--------|------------|
|                           |        |        |        |        |        |        |        | Total* | LT Average |
| Blackheath Upper          | 0.0    | 0.0    | 0.0    | 0.0    | 0.0    | 0.0    |        | 0.0    | 15.3       |
| Brooklands                | 0.0    | 0.0    | 0.0    | 0.0    | 0.0    | 0.0    |        | 0.0    | 27.7       |
| Newlands                  | 0.0    | 0.0    | 0.0    | 0.0    | 0.2    | 0.0    |        | 0.2    | 37.4       |
| Steenbras                 | 0.0    | 0.0    | 0.0    | 0.0    | 0.0    | 0.0    |        | 0.9    | 29.5       |
| Table Mountain (Woodhead) | 0.0    | 0.0    | 0.0    | 0.0    | 0.0    |        |        | 0.0    | 52.7       |
| Theewaterskloof           | 1.0    | 0.0    | 0.0    | 0.0    | 6.0    | 0.0    |        | 7.0    | 24.9       |
| Tygerberg                 | 0.0    | 0.0    | 0.0    | 0.0    | 0.0    | 0.0    |        | 0.0    | 13.0       |
| Voëlvlei                  | 0.0    | 0.0    | 0.0    | 0.0    | 0.0    | 0.0    |        | 0.0    | 13.2       |
| Wemmershoek               | 0.0    | 0.0    | 0.0    | 0.0    | 0.0    | 10.0   |        | 10.0   | 20.6       |
| Wynberg                   | 0.0    | 0.0    | 0.0    | 0.0    | 0.0    | 0.0    |        | 0.0    | 21.2       |

Notes: \*Total/cumulative rainfall for month indicated above  
LT: Long Term

## Accumulated Monthly Rainfall at Wemmershoek

Note: Wemmershoek station used due to long record and mountainous location



## Drinking Water Quality

### SAMPLE PASS RATE

| Month  | Water Quality Compliance (%) | Target (%) |
|--------|------------------------------|------------|
| Aug-19 | 99.02                        | 98         |
| Sep-19 | 98.99                        | 98         |
| Oct-19 | 99.03                        | 98         |
| Nov-19 | 99.14                        | 98         |
| Dec-19 | 99.09                        | 98         |
| Jan-20 | 99.07                        | 98         |
| Feb-20 | 99.08                        | 98         |
| Mar-20 | 99.17                        | 98         |
| Apr-20 | 99.16                        | 98         |
| May-20 | 99.20                        | 98         |
| Jun-20 | 99.19                        | 98         |
| Jul-20 | 99.22                        | 98         |
| Aug-20 | 99.21                        | 98         |
| Sep-20 | 99.20                        | 98         |
| Oct-20 | 99.17                        | 98         |

#### Notes:

This table shows CCT drinking water quality compliance according to the South African National Standard 241:2015. Compliance, measured against all prescribed chemical and microbiological components, consistently exceeds the very high CCT target of 98%. (Overall compliance percentages of continuous sampling and analysis are released on a monthly basis.)