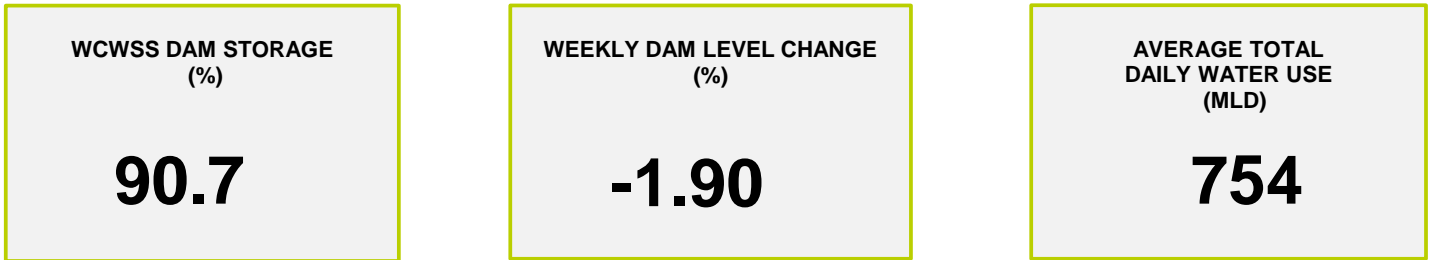
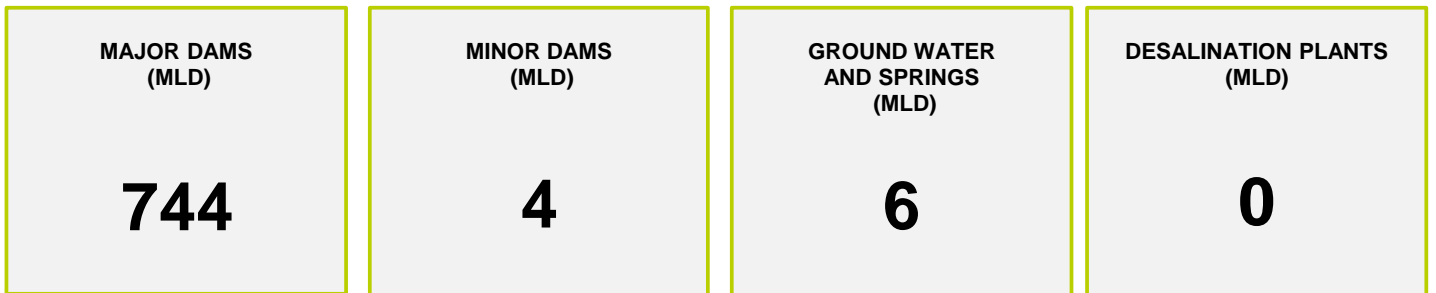




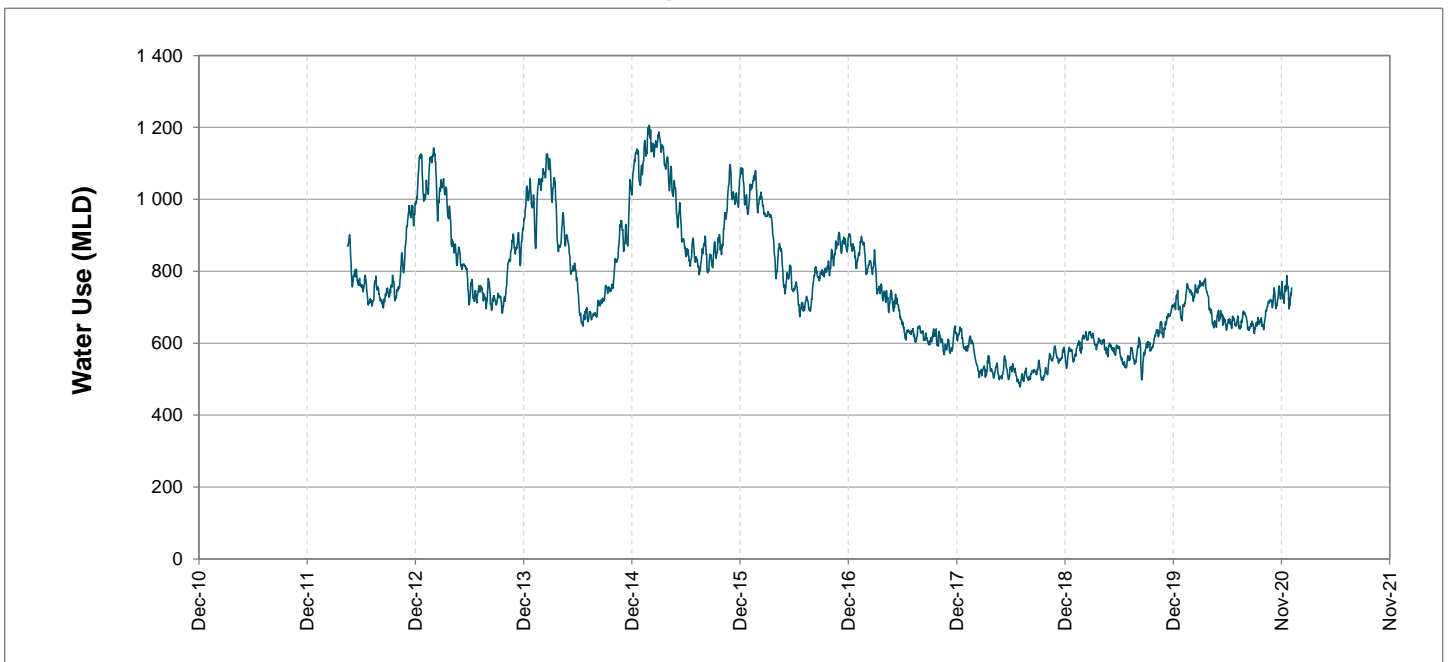
## Headline Statistics



## Water Production from Different Sources



## Overall Water Usage Trend (2010 - Present)



WCSS means Western Cape Water Supply System

MLD means million litres per day

More information on Water Saving and Restrictions is available on the City of Cape Town's 'ThinkWater' website

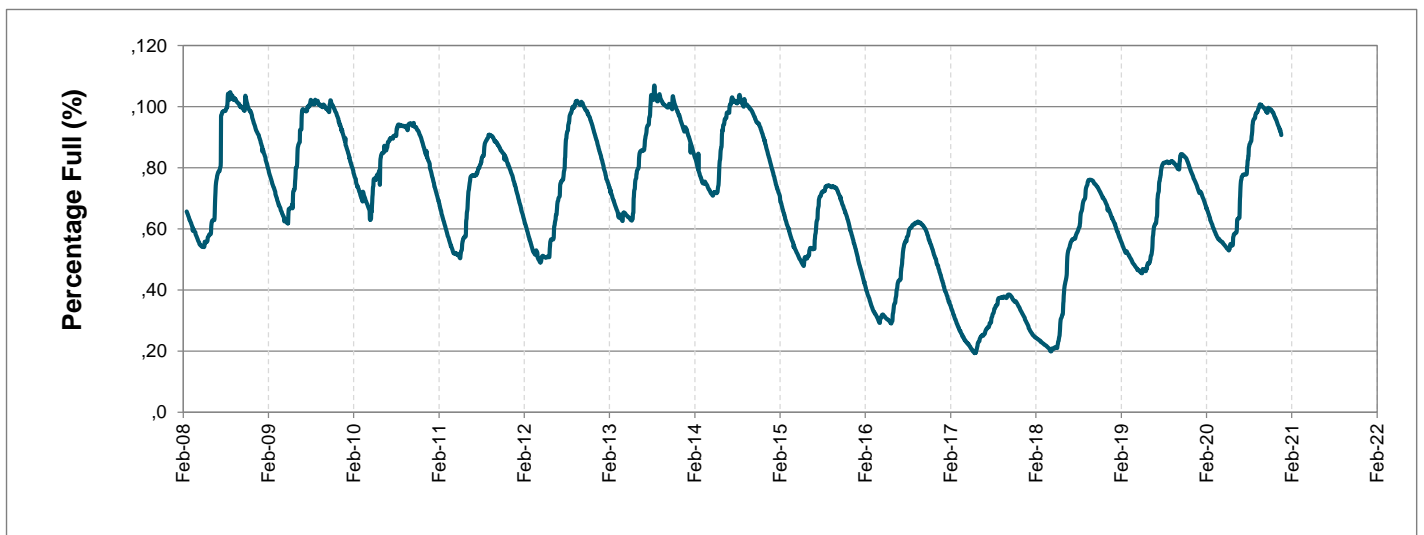
# Water Stored in Major Dams (WCWSS)

Overall Percentage Full **90.7%**

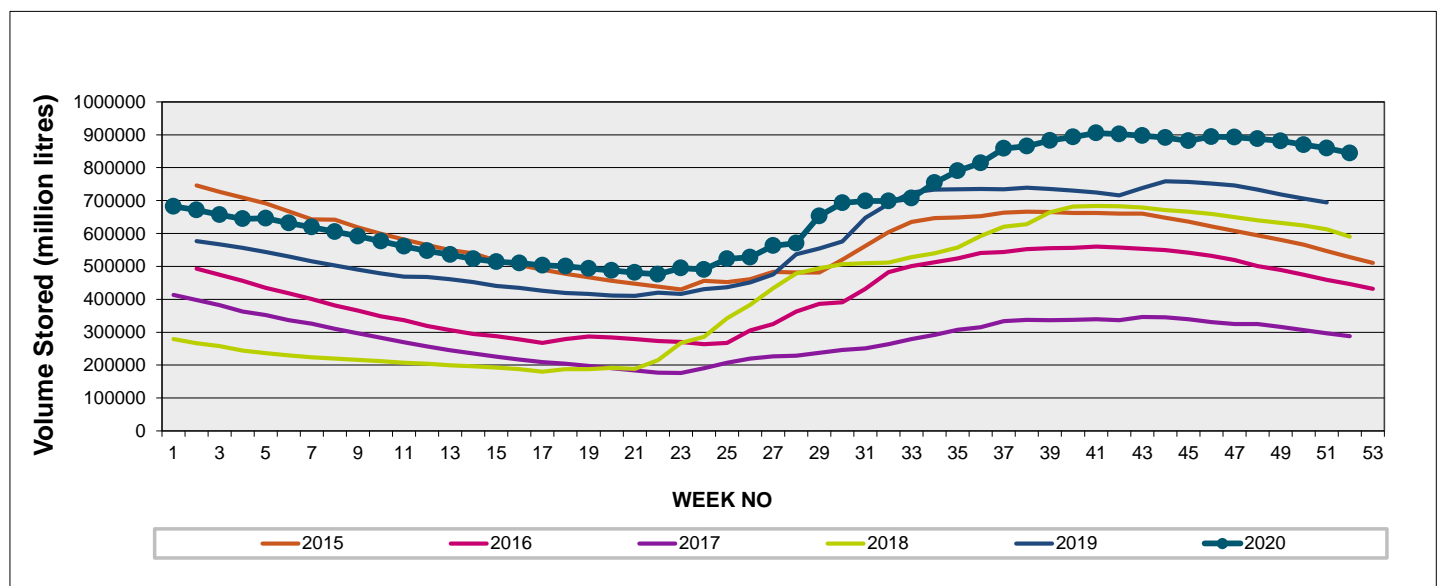
Weekly Change **-1.9%**

MAJOR DAMS (WCWSS)	STORAGE						
	CAPACITY	%	%	%	%	%	%
	MI	04 January 2021	Previous week	2020	2019	2018	2017
BERG RIVER	130 010	94.0	94.0	90.5	88.7	58.7	57.4
STEENBRAS LOWER	33 517	86.9	89.2	83.1	67.0	49.8	37.6
STEENBRAS UPPER	31 767	76.0	76.7	99.8	69.9	94.9	76.7
THEEWATERSKLOOF	480 188	93.1	94.7	66.5	50.2	17.3	39.6
VOËLVLEI	164 095	84.8	89.1	79.3	83.4	21.3	51.3
WEMMERSHOEK	58 644	91.3	93.0	79.7	77.2	52.2	41.0
<b>TOTAL STORED</b>	<b>898 221</b>	<b>815 033</b>	<b>831 822</b>	<b>673 376</b>	<b>583 191</b>	<b>271 986</b>	<b>409 887</b>
<b>% STORAGE</b>		<b>90.7%</b>	<b>92.6%</b>	<b>75.0%</b>	<b>64.9%</b>	<b>30.3%</b>	<b>45.6%</b>

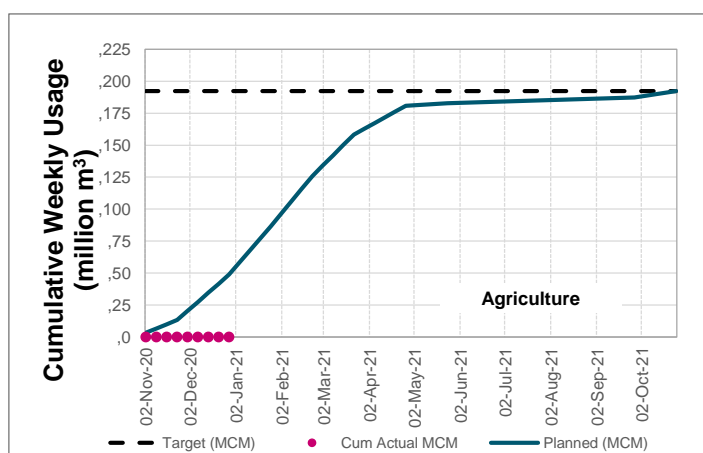
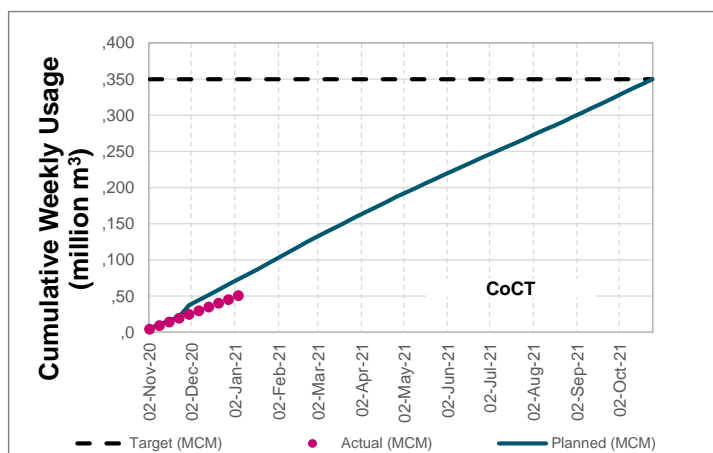
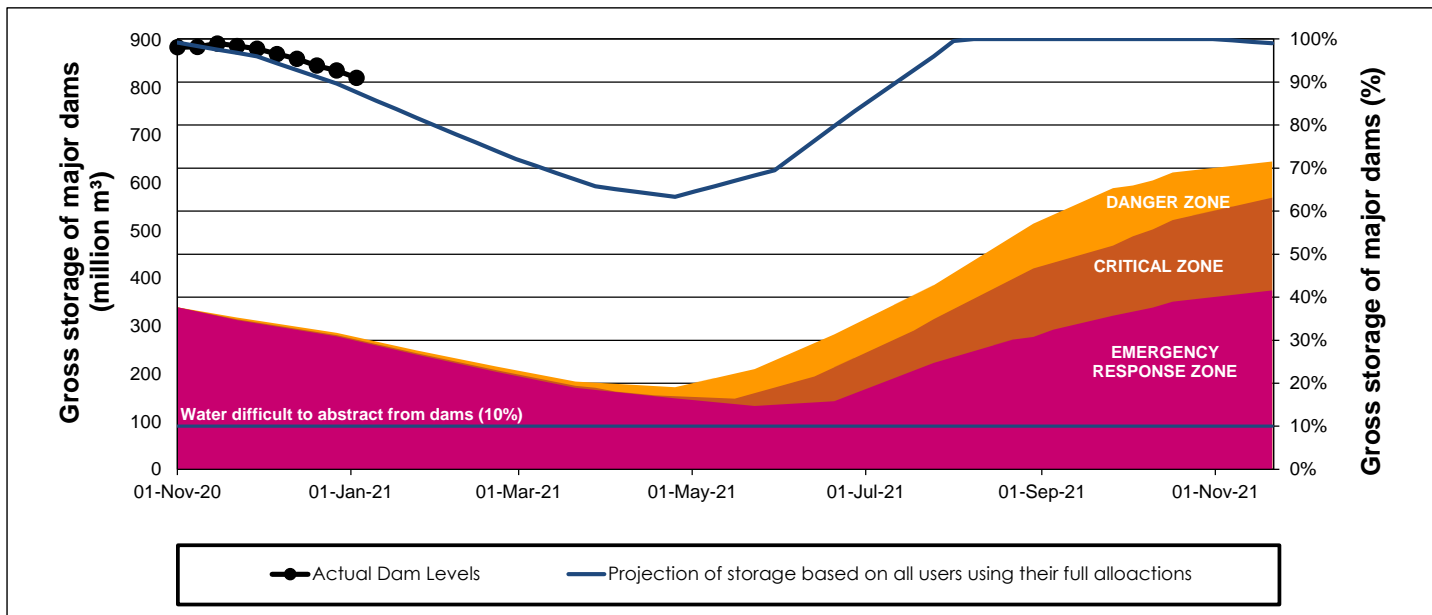
## WCWSS Storage Record (2008 - Present)



## WCWSS Comparative Storage Graph (5 Years)



# WCWSS Dam Storage and Water Use Tracking



## Water Stored in Minor Dams

Overall Percentage Full **71.7**

Weekly Change **-2.13**

MINOR DAMS	STORAGE						
	CAPACITY	%	%	%	%	%	%
	MI	04 January 2021	Previous week	2020	2019	2018	2017
ALEXANDRA (Table Mountain)	126	58.6	61.5	47.5	50.4	46.5	33.5
DE VILLIERS (Table Mountain)	243	66.1	71.5	98.3	49.5	79.9	72.8
HELY-HUTCHINSON (Table Mountain)	925	44.5	52.4	70.9	99.2	97.3	98.1
KLEINPLAATS (Simon's Town)	1 368	87.2	90.4	71.6	77.3	54.9	61.4
LAND-EN-ZEEZICHT (Helderberg)	451	93.5	94.8	86.2	99.7	100.0	84.4
LEWIS GAY (Simon's Town)	182	51.9	59.1	18.5	52.4	93.6	56.8
VICTORIA (Table Mountain)	128	92.3	92.7	91.6	86.5	93.1	91.2
WOODHEAD (Table Mountain)	954	73.7	67.7	79.3	77.4	92.4	98.9
<b>Total Stored</b>	<b>4 377</b>	<b>3136.5</b>	<b>3229.7</b>	<b>3202.2</b>	<b>3520.3</b>	<b>3501.8</b>	<b>3484.0</b>
<b>Percentages stored</b>		<b>71.7</b>	<b>73.8</b>	<b>73.2</b>	<b>80.4</b>	<b>80.0</b>	<b>79.6</b>

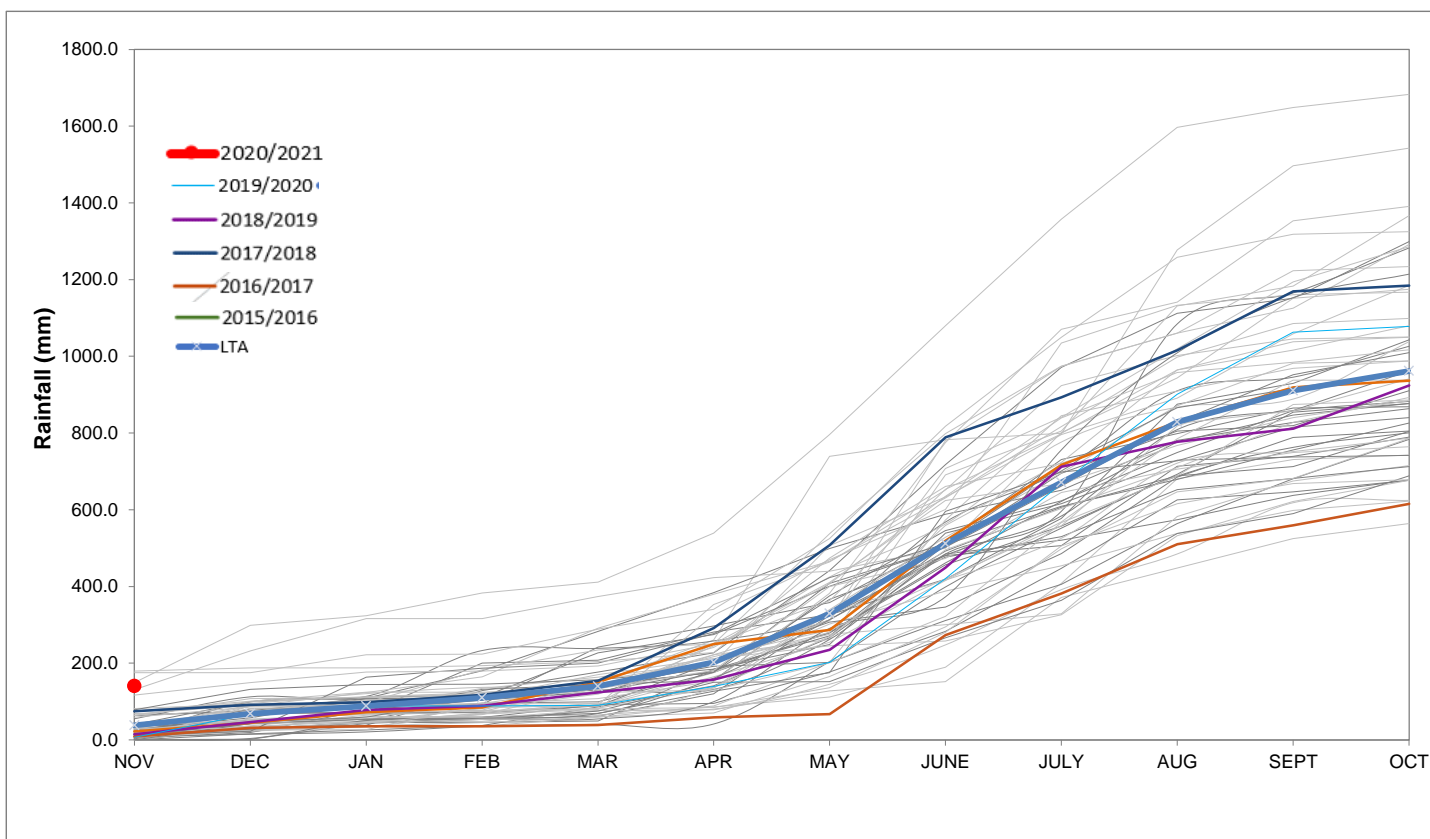
## Rainfall Recorded

RAINFALL (mm)	29-Dec	30-Dec	31-Dec	01-Jan	02-Jan	03-Jan	04-Jan	Jan	
								Total*	LT Average
Blackheath Upper	0.0	0.0	0.0	0.0	0.0	0.0		0.0	15.3
Brooklands	0.0	0.0	0.0	0.0	0.0	0.0		0.0	27.7
Newlands	0.0	0.0	0.0	0.0	0.0	0.0		0.0	37.4
Steenbras	0.0	0.0	0.9	0.0	0.0	0.0		0.9	29.5
Table Mountain (Woodhead)	0.0	0.0	0.0	0.0	0.0			0.0	52.7
Theewaterskloof	0.0	0.0	0.0	0.0	0.0	0.0		0.0	24.9
Tygerberg	0.0	0.0	0.0	0.0	0.0	0.0		0.0	13.0
Voëlvlei	0.0	0.0	0.0	0.0	0.0	0.0		0.0	13.2
Wemmershoek	0.0	0.0	0.0	0.0	0.0	0.0		0.0	20.6
Wynberg	0.0	0.0	0.0	0.0	0.0	0.0		0.0	21.2

Notes: \*Total/cumulative rainfall for month indicated above  
LT: Long Term

## Accumulated Monthly Rainfall at Wemmershoek

Note: Wemmershoek station used due to long record and mountainous location



## Drinking Water Quality

### SAMPLE PASS RATE

Month	Water Quality Compliance (%)	Target (%)
Aug-19	99.02	98
Sep-19	98.99	98
Oct-19	99.03	98
Nov-19	99.14	98
Dec-19	99.09	98
Jan-20	99.07	98
Feb-20	99.08	98
Mar-20	99.17	98
Apr-20	99.16	98
May-20	99.20	98
Jun-20	99.19	98
Jul-20	99.22	98
Aug-20	99.21	98
Sep-20	99.20	98
Oct-20	99.17	98

#### Notes:

This table shows CCT drinking water quality compliance according to the South African National Standard 241:2015. Compliance, measured against all prescribed chemical and microbiological components, consistently exceeds the very high CCT target of 98%. (Overall compliance percentages of continuous sampling and analysis are released on a monthly basis.)