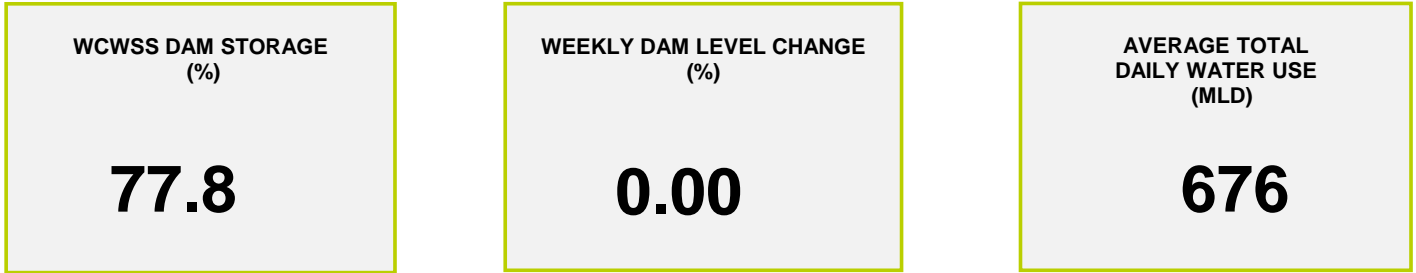
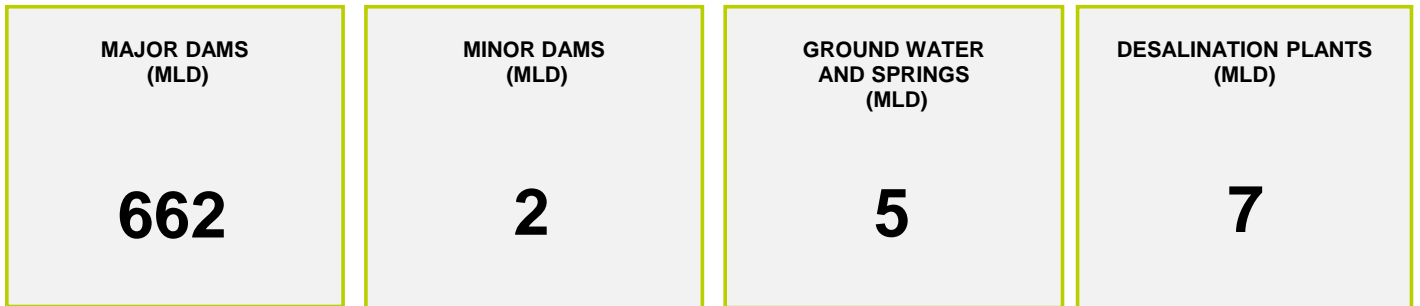




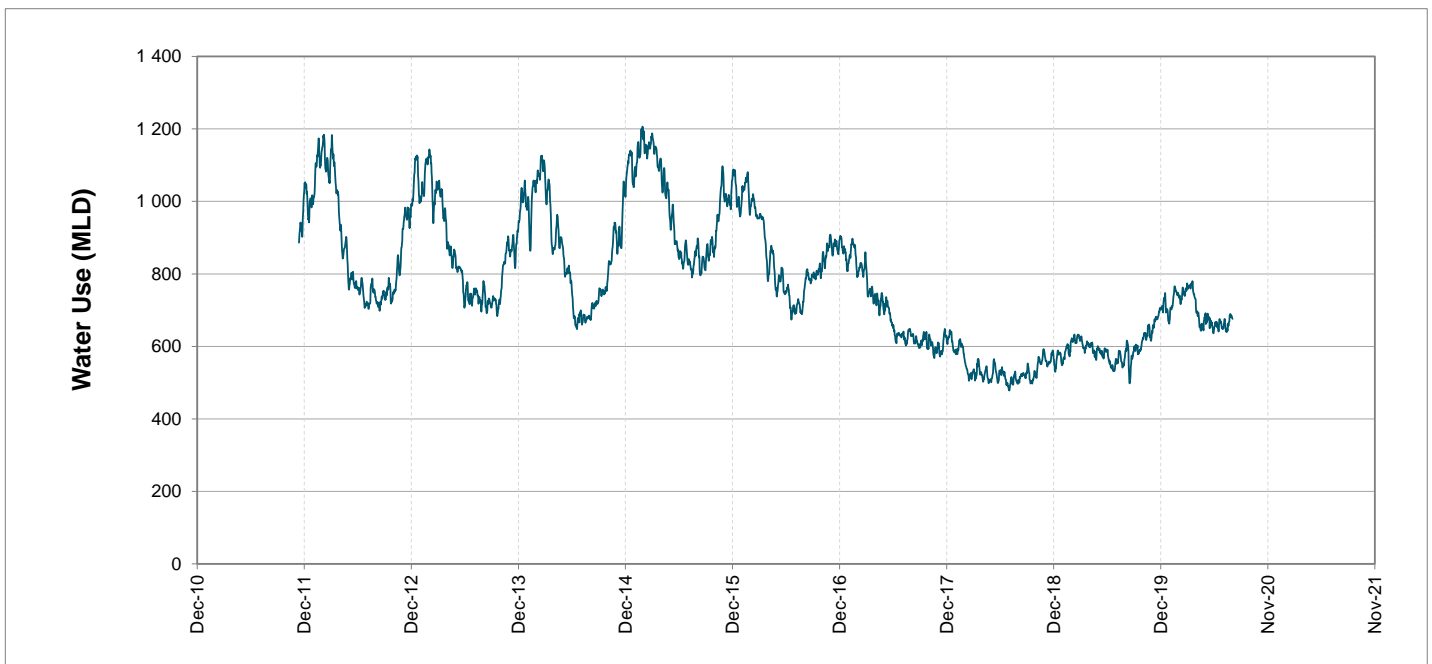
Headline Statistics



Water Production from Different Sources



Overall Water Usage Trend (2010 - Present)



WCWSS means Western Cape Water Supply System

MLD means million litres per day

More information on Water Saving and Restrictions is available on the City of Cape Town's 'ThinkWater' website

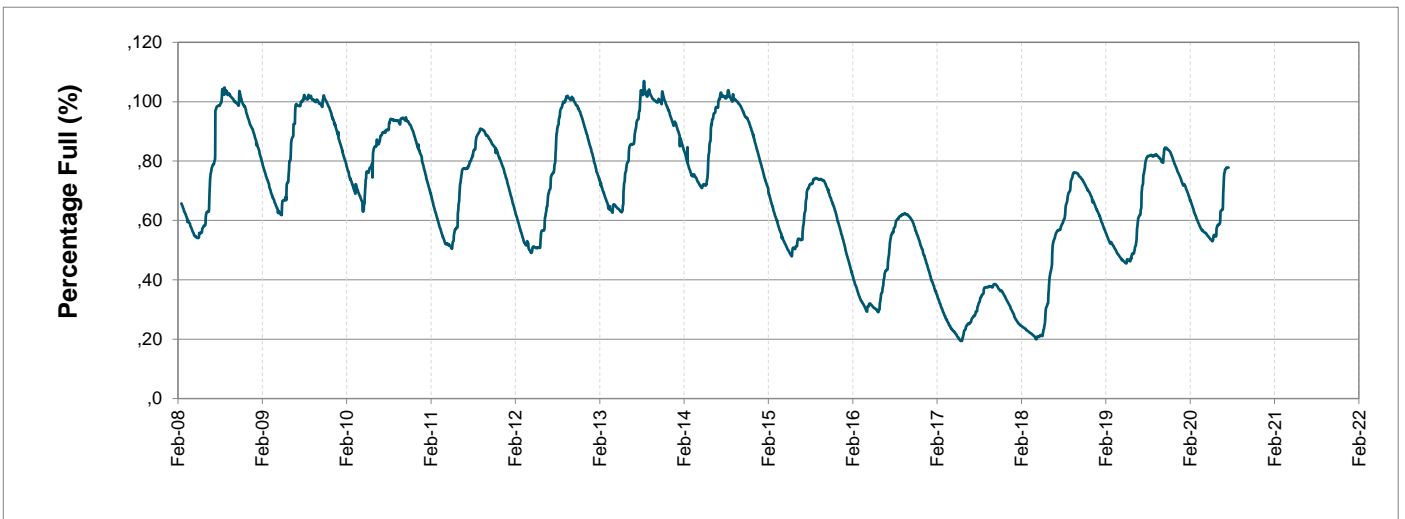
Water Stored in Major Dams (WCWSS)

Overall Percentage Full **77.8%**

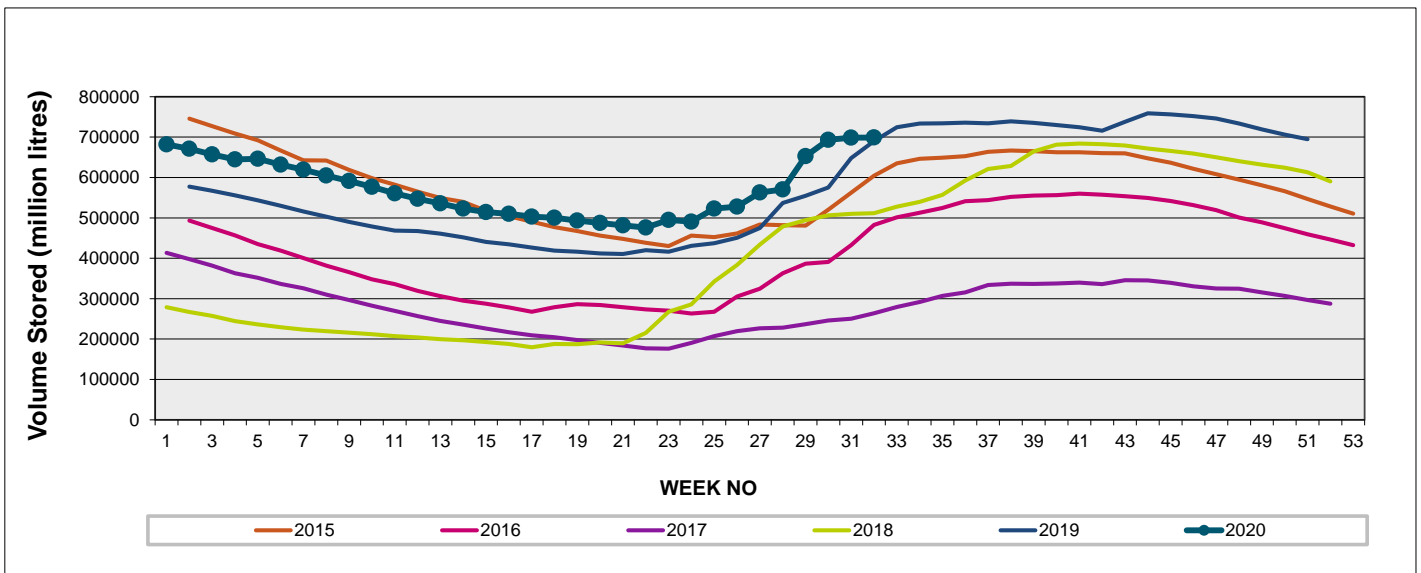
Weekly Change **0.0%**

MAJOR DAMS (WCWSS)	STORAGE						
	CAPACITY	%	%	%	%	%	%
	MI	03 August 2020	Previous week	2019	2018	2017	2016
BERG RIVER	130 010	97.2	97.6	100.7	86.5	43.7	61.4
STEENBRAS LOWER	33 517	78.2	79.2	80.1	57.8	29.5	59.9
STEENBRAS UPPER	31 767	99.7	99.2	102.5	93.7	82.7	101.8
THEEWATERSKLOOF	480 188	73.4	73.4	66.9	42.3	21.8	48.3
VOËLVLEI	164 095	73.2	72.5	76.0	59.3	21.9	51.7
WEMMERSHOEK	58 644	71.7	72.2	78.1	83.5	37.6	68.3
TOTAL STORED	898 221	698 882	698 702	682 048	510 903	255 620	489 205
% STORAGE		77.8%	77.8%	75.9%	56.9%	28.5%	54.5%

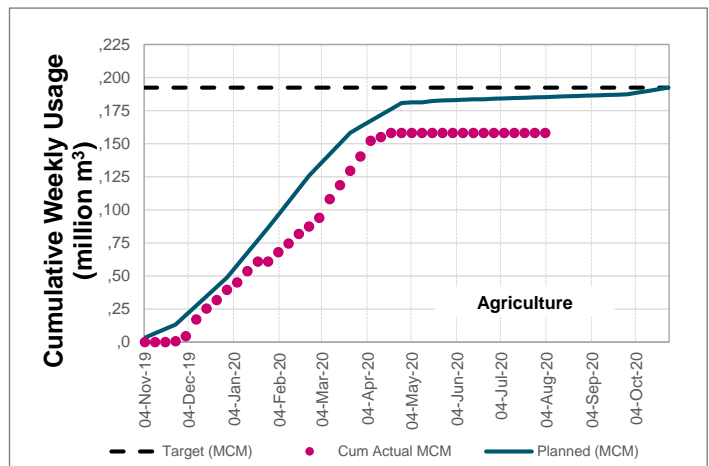
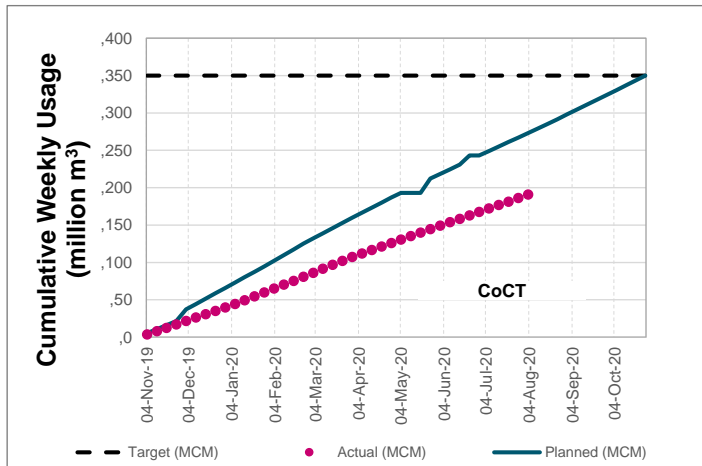
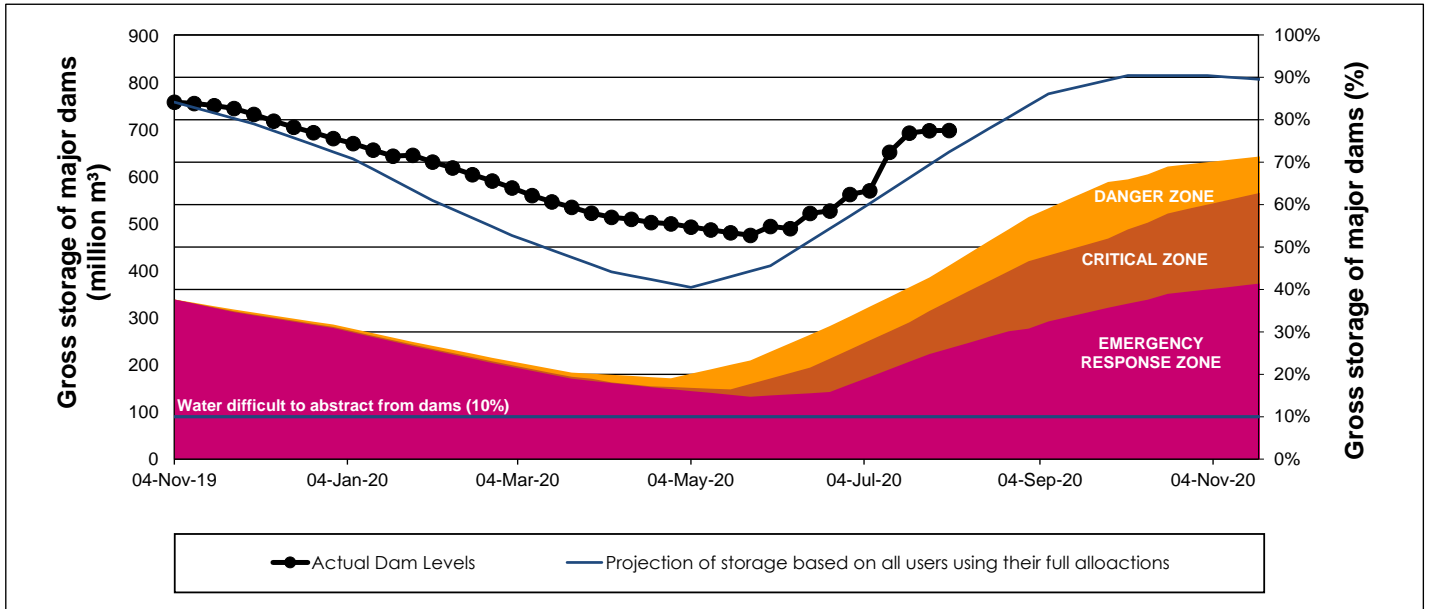
WCWSS Storage Record (2008 - Present)



WCWSS Comparative Storage Graph (5 Years)



WCSS Dam Storage and Water Use Tracking



Water Stored in Minor Dams

Overall Percentage Full **83.7**

Weekly Change **-0.39**

MINOR DAMS	STORAGE						
	CAPACITY	%	%	%	%	%	%
	MI	03 August 2020	Previous week	2019	2018	2017	2016
ALEXANDRA (Table Mountain)	126	80.6	87.2	39.2	76.5	60.0	47.3
DE VILLIERS (Table Mountain)	243	100.0	100.2	99.8	94.4	68.9	100.0
HELY-HUTCHINSON (Table Moun)	925	99.3	99.5	100.0	97.6	100.7	100.3
KLEINPLAATS (Simon's Town)	1 368	61.9	61.9	67.7	78.4	43.6	78.3
LAND-EN-ZEEZICHT (Helderberg)	451	76.5	74.9	80.0	100.0	64.3	43.9
LEWIS GAY (Simon's Town)	182	86.5	94.5	83.4	67.0	97.2	81.4
VICTORIA (Table Mountain)	128	99.3	99.6	96.2	95.8	101.5	74.6
WOODHEAD (Table Mountain)	954	99.8	99.8	100.9	56.8	100.9	99.8
Total Stored	4 377	3661.4	3678.5	3704.9	3505.5	3306.8	3644.4
Percentages stored		83.7	84.0	84.6	80.1	75.5	83.3

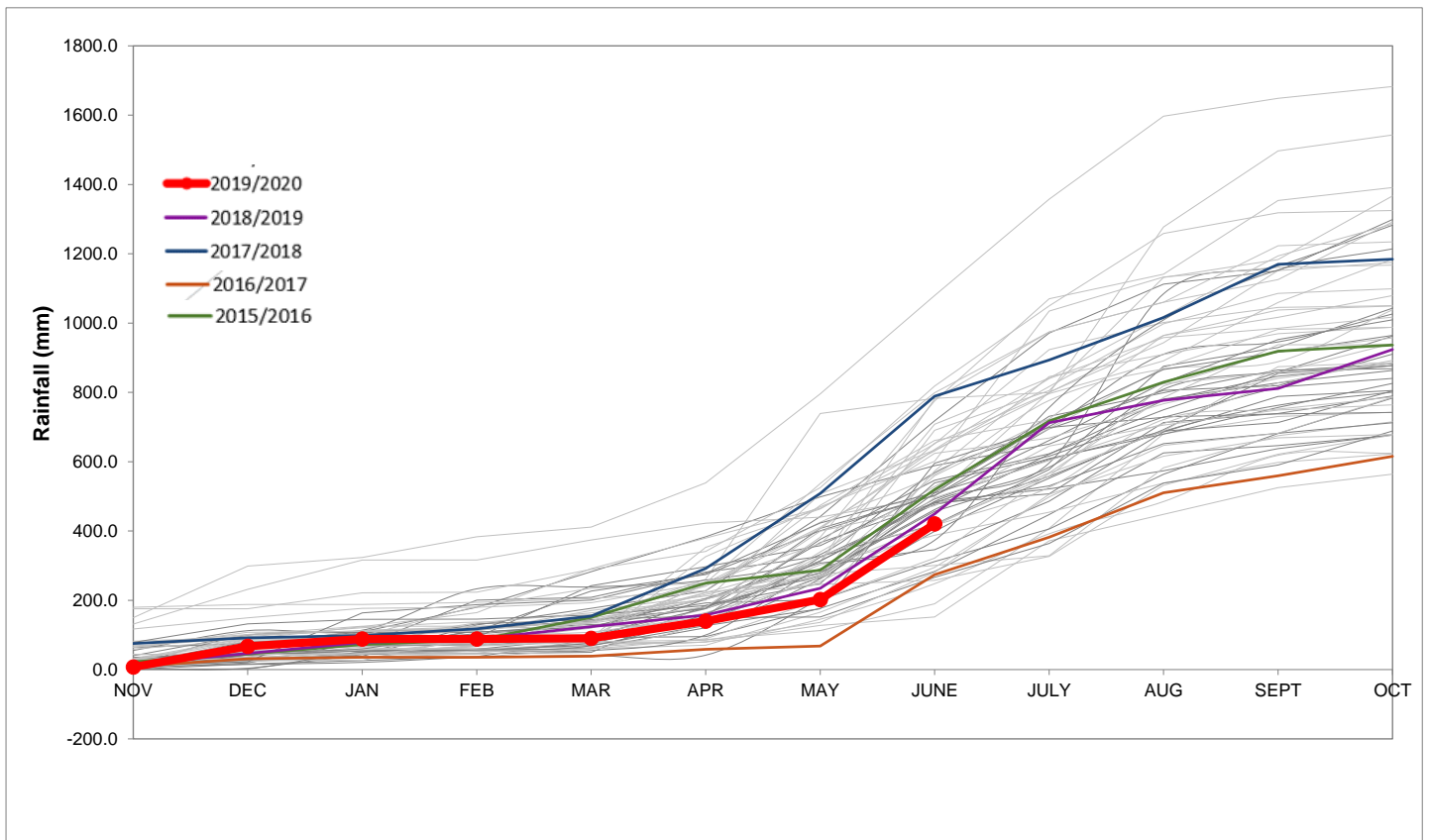
Rainfall Recorded

RAINFALL (mm)	28-Jul	29-Jul	30-Jul	31-Jul	01-Aug	02-Aug	03-Aug	Aug	
								Total*	LT Average
Blackheath Upper	0.0	0.0	0.0	0.0	0.0	0.0	0.0	0.0	77.7
Brooklands	0.0	0.0	0.0	0.0	0.0	0.0	0.0	0.0	135.1
Newlands	0.0	0.0	0.0	0.0	0.0	0.0	0.0	0.0	237.0
Steenbras	0.0	0.0	0.0	0.0	0.0	0.0	0.0	0.0	127.1
Table Mountain (Woodhead)	0.0	0.1	0.2	0.0	0.0	0.0	0.0	0.0	215.8
Theewaterskloof	0.0	0.0	0.0	0.0	0.0	0.0	0.0	0.0	76.0
Tygerberg	0.0	0.0	0.0	0.0	0.0	0.0	0.0	0.0	86.5
Voëlvlei	0.0	0.0	0.0	0.0	0.0	0.0	0.0	0.0	90.2
Wemmershoek	0.0	0.0	0.0	0.0	0.0	0.0	0.0	0.0	146.0
Wynberg	0.0	0.0	0.0	0.0	0.0	0.0	0.0	0.0	191.1

Notes: *Total/cummulative rainfall for month indicated above
LT: Long Term

Accumulated Monthly Rainfall at Wemmershoek

Note: Wemmershoek station used due to long record and mountaneous location



Drinking Water Quality

SAMPLE PASS RATE

Month	Water Quality Compliance (%)	Target (%)
Mar-19	99.01	98
Apr-19	99.10	98
May-19	99.08	98
Jun-19	99.09	98
Jul-19	99.04	98
Aug-19	99.02	98
Sep-19	98.99	98
Oct-19	99.03	98
Nov-19	99.14	98
Dec-19	99.09	98
Jan-20	99.07	98
Feb-20	99.08	98
Mar-20	99.17	98
Apr-20	99.16	98
May-20	99.20	98

Notes:

This table shows CCT drinking water quality compliance according to the South African National Standard 241:2015. Compliance, measured against all prescribed chemical and microbiological components, consistently exceeds the very high CCT target of 98%. (Overall compliance percentages of continuous sampling and analysis are released on a monthly basis.)