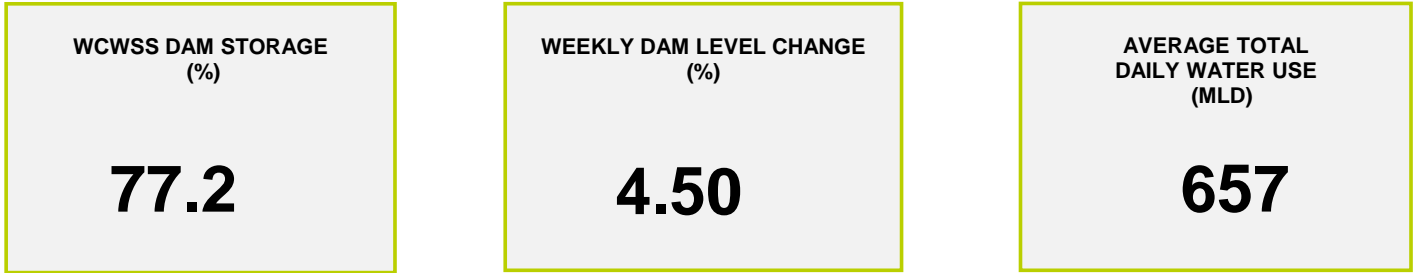
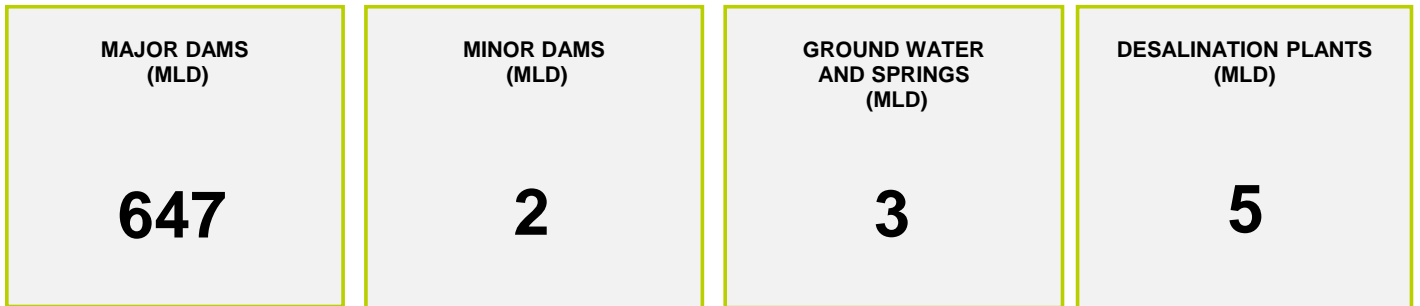




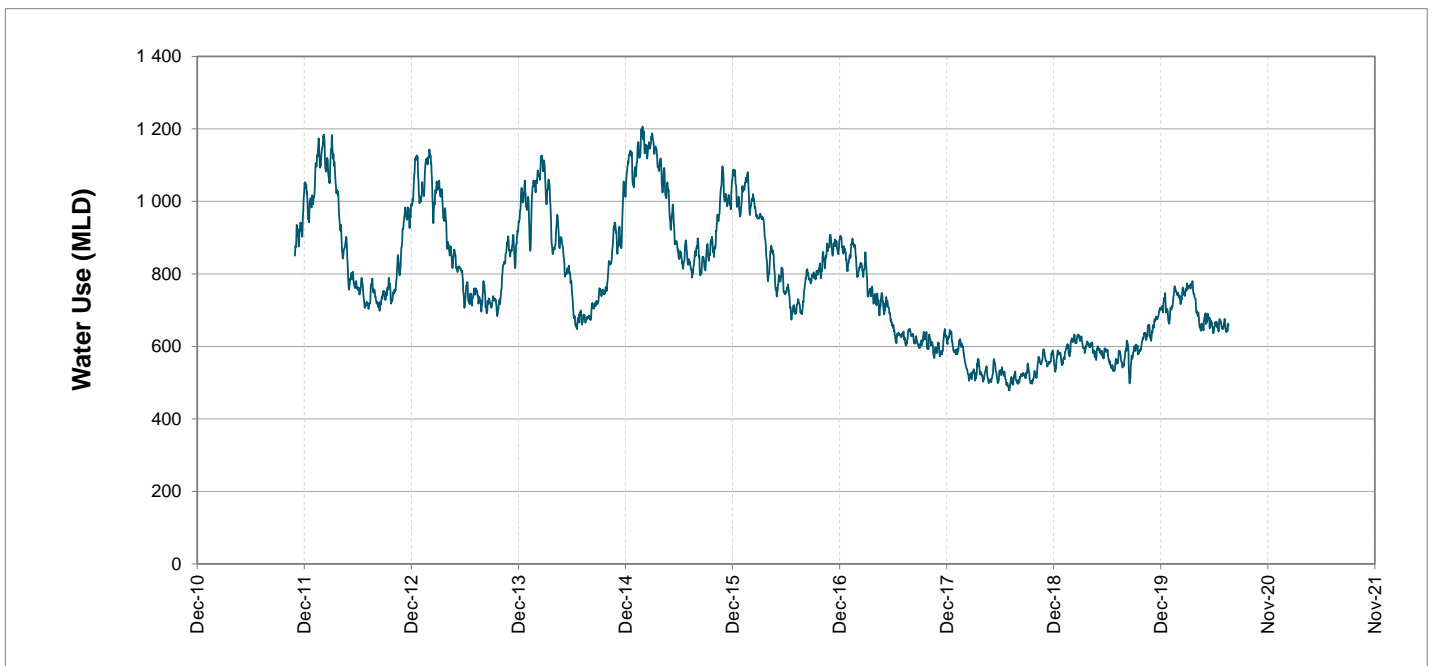
Headline Statistics



Water Production from Different Sources



Overall Water Usage Trend (2010 - Present)



WCWSS means Western Cape Water Supply System

MLD means million litres per day

More information on Water Saving and Restrictions is available on the City of Cape Town's 'ThinkWater' website

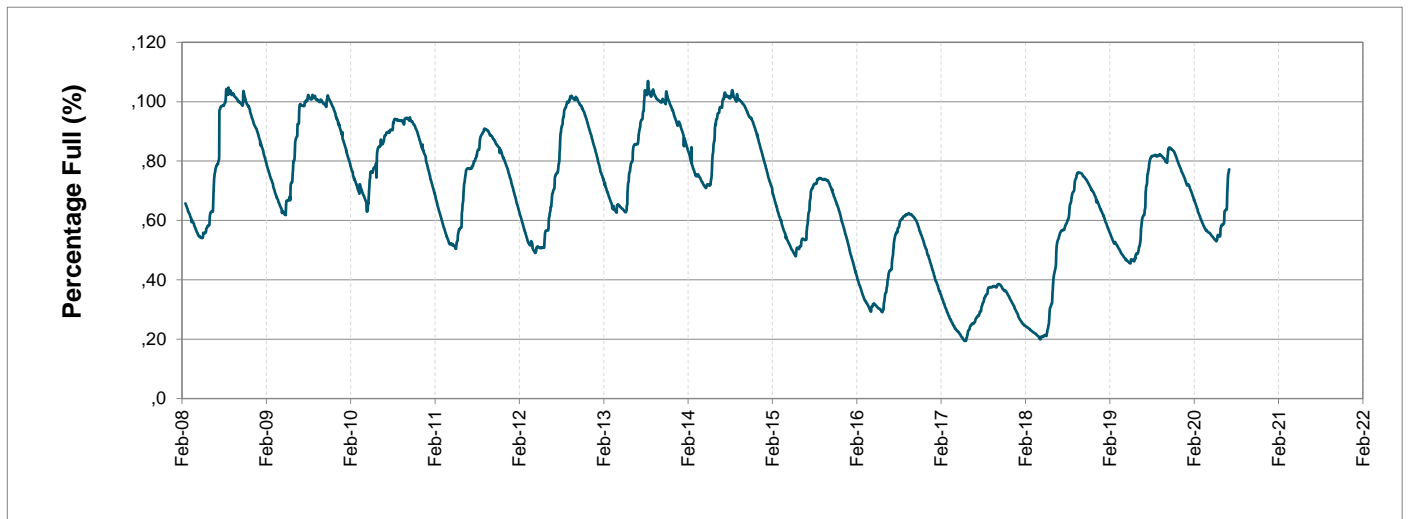
Water Stored in Major Dams (WCWSS)

Overall Percentage Full **77.2%**

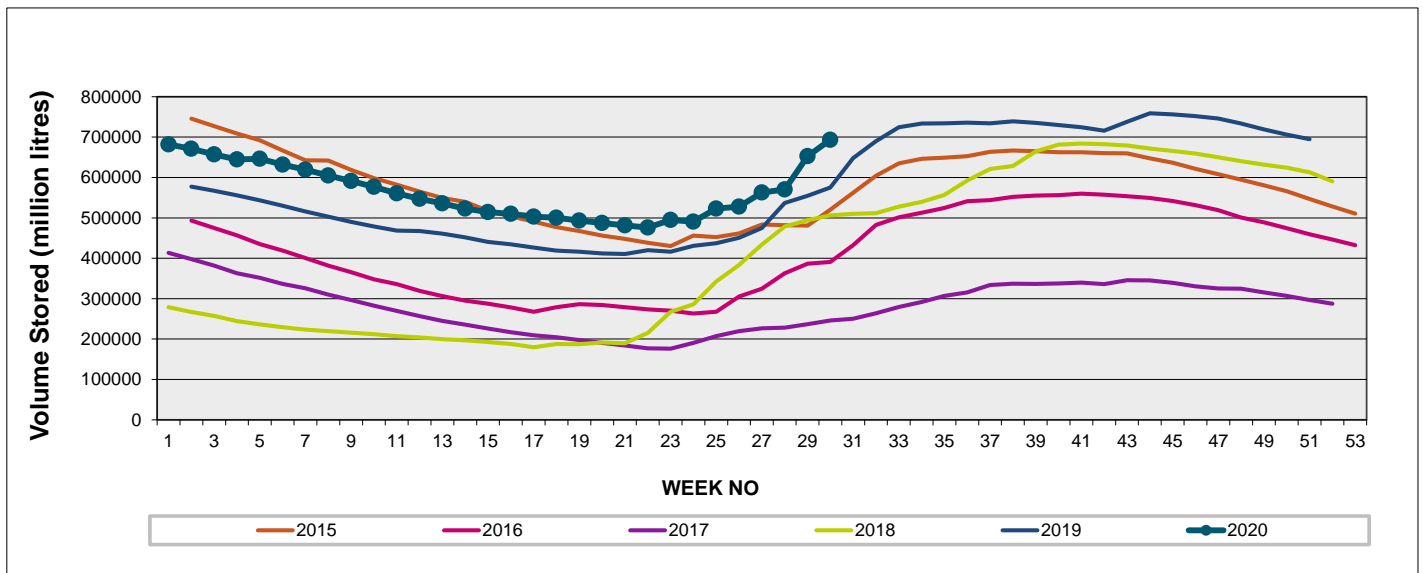
Weekly Change **4.5%**

MAJOR DAMS (WCWSS)	STORAGE						
	CAPACITY	%	%	%	%	%	%
	MI	20 July 2020	Previous week	2019	2018	2017	2016
BERG RIVER	130 010	98.0	93.8	92.6	85.5	39.3	47.0
STEENBRAS LOWER	33 517	78.4	71.2	57.2	55.7	29.2	41.7
STEENBRAS UPPER	31 767	100.1	101.3	97.1	100.3	75.7	83.7
THEEWATERSKLOOF	480 188	72.9	69.0	53.4	41.3	21.1	39.8
VOËLVLEI	164 095	70.5	63.8	66.9	56.2	21.3	39.7
WEMMERSHOEK	58 644	71.7	65.8	57.1	84.9	36.4	57.7
TOTAL STORED	898 221	693 452	652 721	570 234	502 199	242 342	391 583
% STORAGE		77.2%	72.7%	63.5%	55.9%	27.0%	43.6%

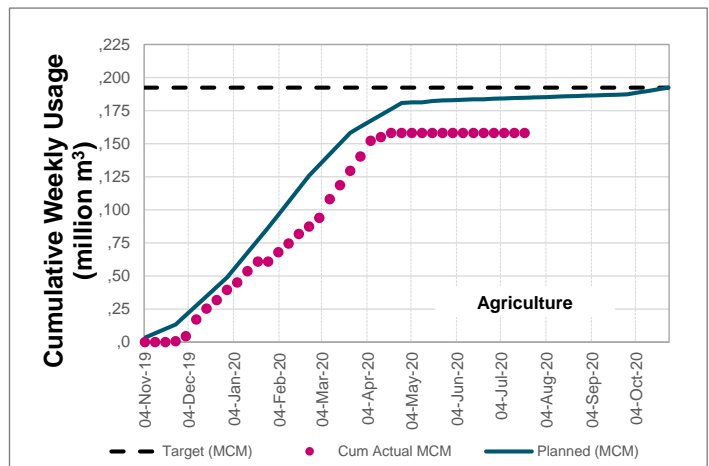
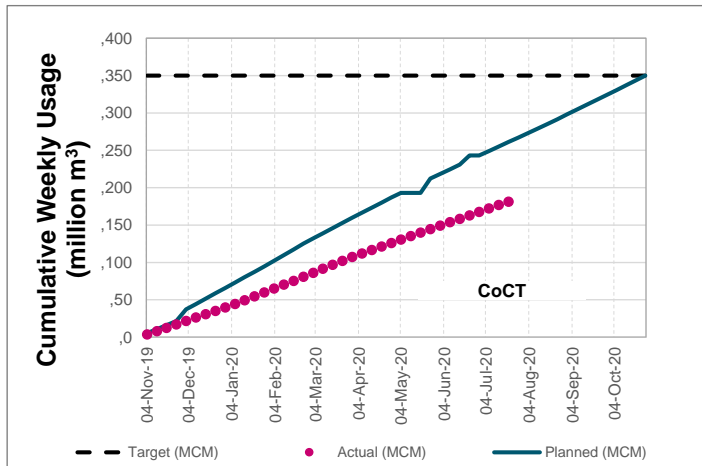
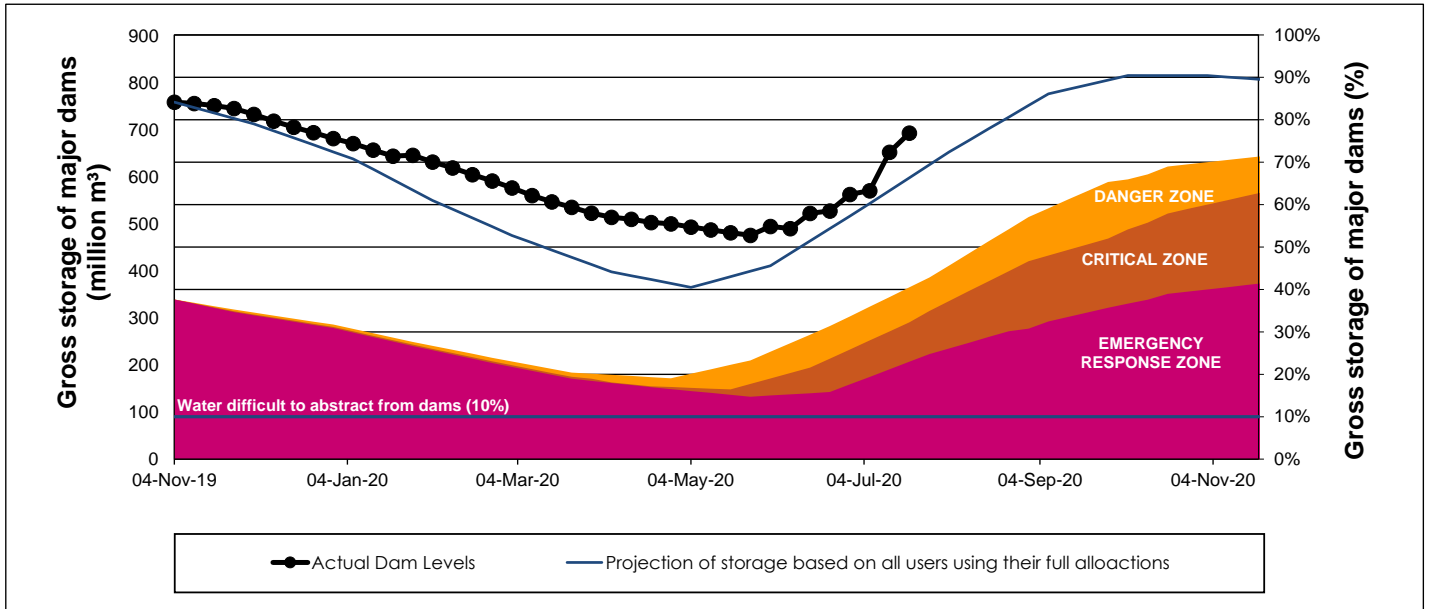
WCWSS Storage Record (2008 - Present)



WCWSS Comparative Storage Graph (5 Years)



WCWSS Dam Storage and Water Use Tracking



Water Stored in Minor Dams

Overall Percentage Full **83.5**

Weekly Change **1.86**

MINOR DAMS	STORAGE						
	CAPACITY	%	%	%	%	%	%
	MI	20 July 2020	Previous week	2019	2018	2017	2016
ALEXANDRA (Table Mountain)	126	94.6	98.7	33.5	82.8	55.6	36.9
DE VILLIERS (Table Mountain)	243	99.8	100.9	100.0	99.1	65.0	97.4
HELY-HUTCHINSON (Table Moun)	925	99.7	100.8	100.5	100.0	100.0	100.2
KLEINPLAATS (Simon's Town)	1 368	58.7	50.7	57.5	77.0	40.5	57.2
LAND-EN-ZEEZICHT (Helderberg)	451	74.0	72.9	83.8	100.0	64.1	32.0
LEWIS GAY (Simon's Town)	182	101.3	101.3	40.1	85.1	76.4	36.4
VICTORIA (Table Mountain)	128	100.4	102.3	78.6	96.2	100.8	45.1
WOODHEAD (Table Mountain)	954	99.8	100.5	82.1	79.9	92.4	86.2
Total Stored	4 377	3656.2	3574.9	3313.5	3779.6	3126.2	3049.7
Percentages stored		83.5	81.7	75.7	86.4	71.4	69.7

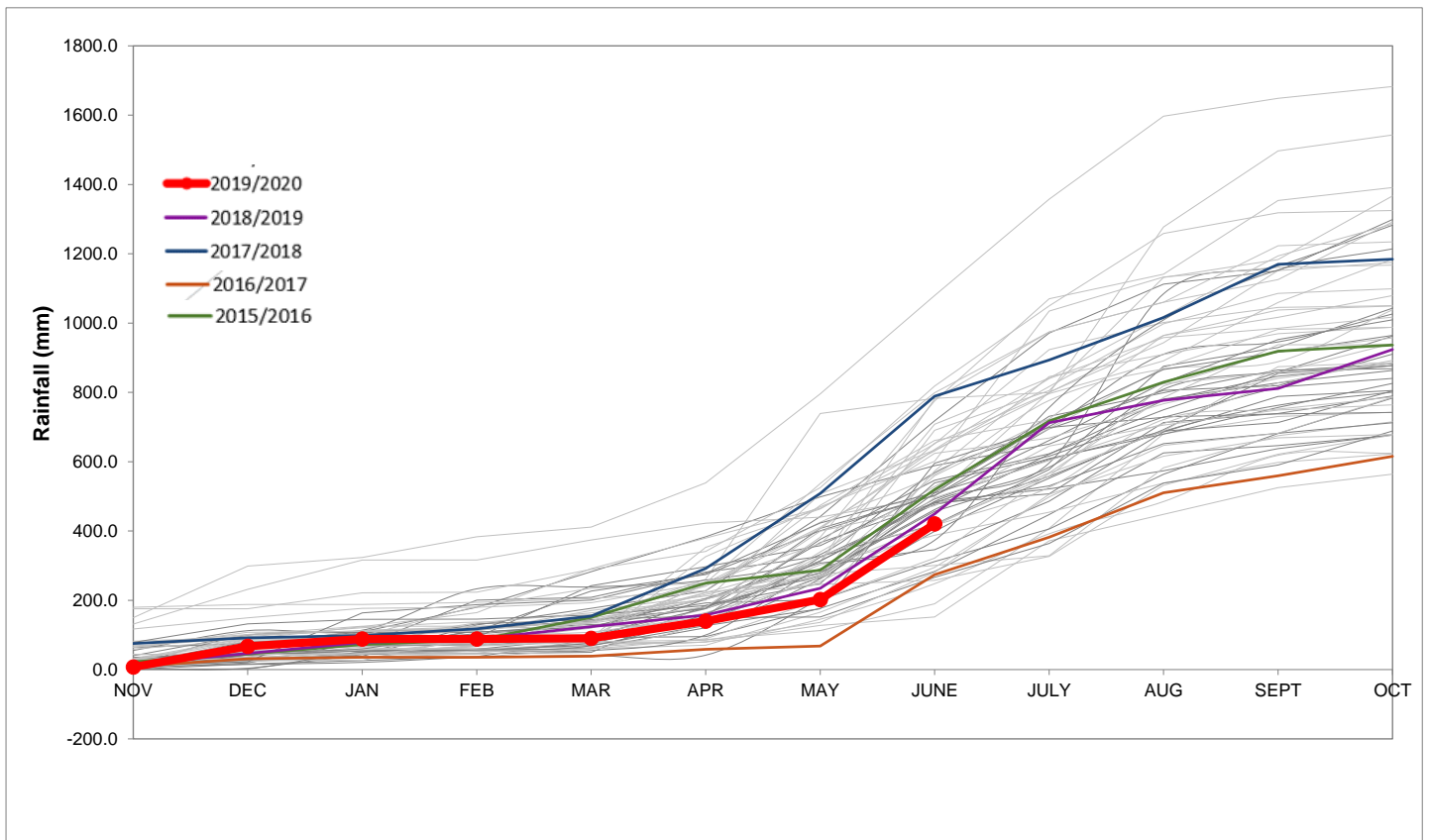
Rainfall Recorded

RAINFALL (mm)	14-Jul	15-Jul	16-Jul	17-Jul	18-Jul	19-Jul	20-Jul	Jul	
								Total*	LT Average
Blackheath Upper	8.0	0.0	0.0	0.0	0.0	0.0	0.0	65.0	78.8
Brooklands	3.0	0.0	0.0	0.0	0.0	0.0	0.0	104.0	132.9
Newlands	13.5	2.0	0.0	0.0	0.0	0.0	0.0	247.5	289.5
Steenbras	10.5	0.0	0.0	0.0	0.0	0.0	0.0	136.7	157.8
Table Mountain (Woodhead)	11.5	0.0	0.0	0.0	0.0	0.0	0.0	122.5	244.5
Theewaterskloof	11.6	7.8	0.0	0.0	0.0	0.0	0.0	91.2	74.2
Tygerberg	9.1	0.0	0.0	0.0	0.0	0.0	0.0	88.1	93.3
Voëlvlei	18.0	3.5	0.0	0.0	0.0	0.0	0.0	113.5	101.1
Wemmershoek	16.8	2.5	0.0	0.0	0.0	0.0	0.0	248.1	172.8
Wynberg	10.3	0.9	0.0	0.0	0.0	0.0	0.0	186.9	186.4

Notes: *Total/cummulative rainfall for month indicated above
LT: Long Term

Accumulated Monthly Rainfall at Wemmershoek

Note: Wemmershoek station used due to long record and mountaneous location



Drinking Water Quality

SAMPLE PASS RATE

Month	Water Quality Compliance (%)	Target (%)
Mar-19	99.01	98
Apr-19	99.10	98
May-19	99.08	98
Jun-19	99.09	98
Jul-19	99.04	98
Aug-19	99.02	98
Sep-19	98.99	98
Oct-19	99.03	98
Nov-19	99.14	98
Dec-19	99.09	98
Jan-20	99.07	98
Feb-20	99.08	98
Mar-20	99.17	98
Apr-20	99.16	98
May-20	99.20	98

Notes:

This table shows CCT drinking water quality compliance according to the South African National Standard 241:2015. Compliance, measured against all prescribed chemical and microbiological components, consistently exceeds the very high CCT target of 98%. (Overall compliance percentages of continuous sampling and analysis are released on a monthly basis.)