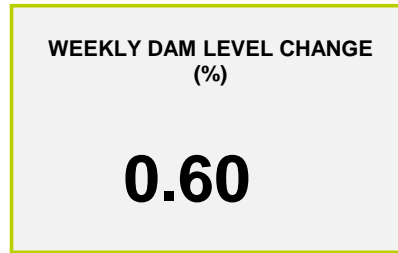
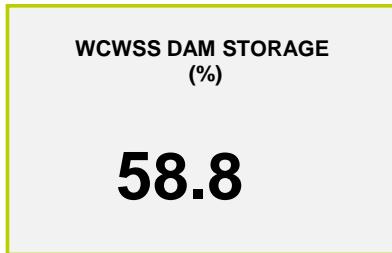
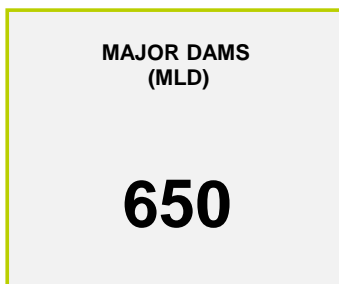




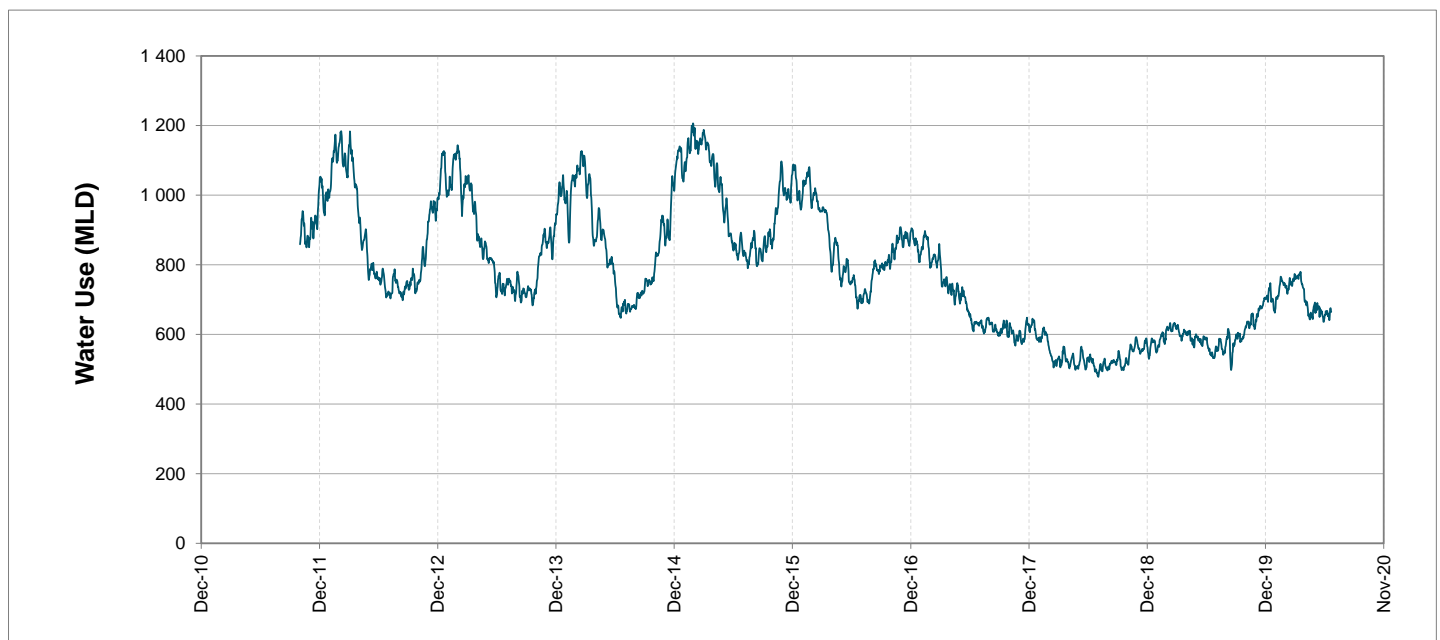
Headline Statistics



Water Production from Different Sources



Overall Water Usage Trend (2010 - Present)



WCWSS means Western Cape Water Supply System

MLD means million litres per day

More information on Water Saving and Restrictions is available on the City of Cape Town's 'ThinkWater' website

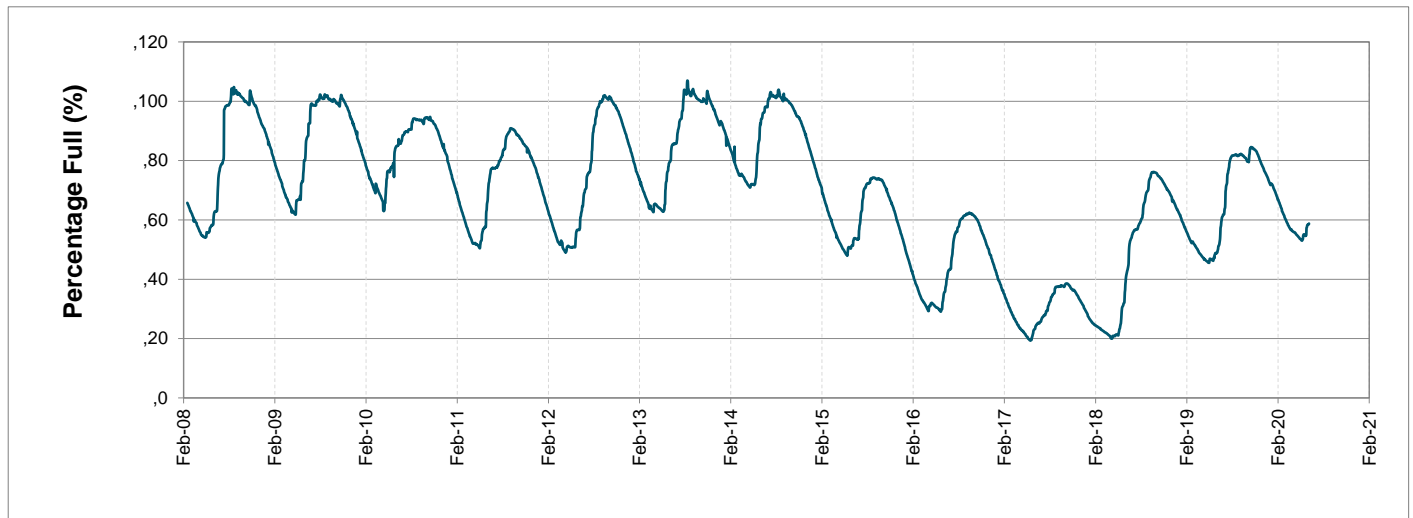
Water Stored in Major Dams (WCWSS)

Overall Percentage Full **58.8%**

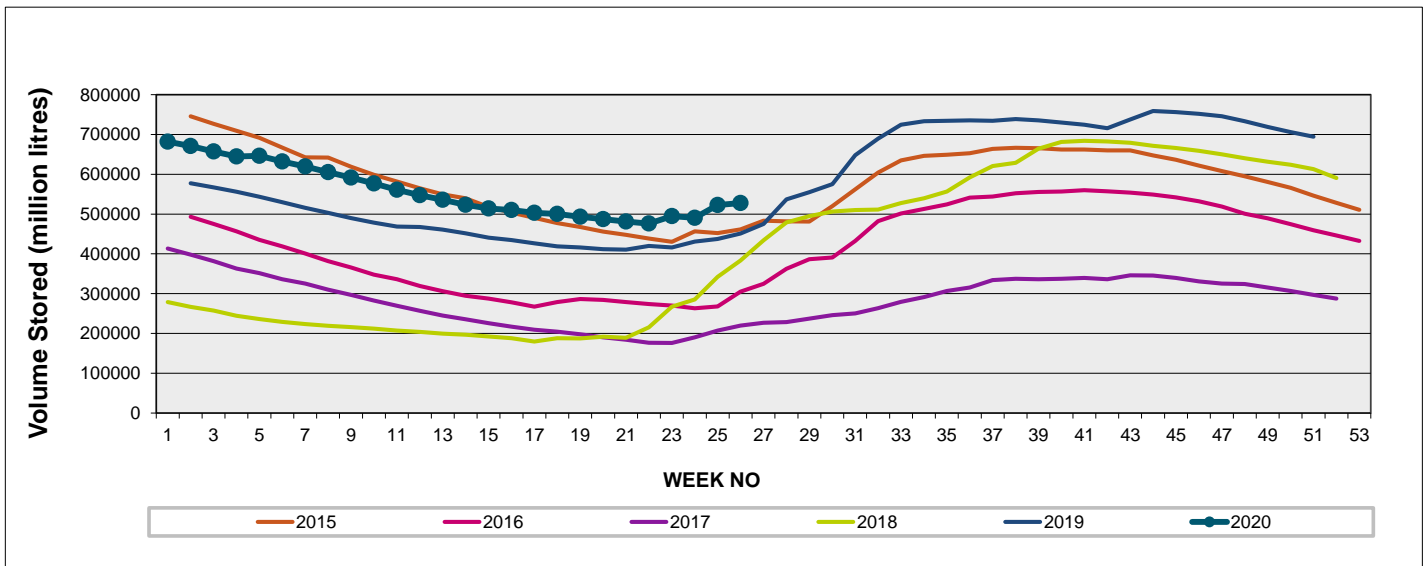
Weekly Change **0.6%**

MAJOR DAMS (WCWSS)	STORAGE						
	CAPACITY	%	%	%	%	%	%
	MI	22 June 2020	Previous week	2019	2018	2017	2016
BERG RIVER	130 010	74.5	73.8	74.6	65.9	35.0	38.3
STEENBRAS LOWER	33 517	49.9	49.9	38.9	45.9	28.8	37.3
STEENBRAS UPPER	31 767	99.6	99.2	66.1	88.4	59.5	61.8
THEEWATERSKLOOF	480 188	55.8	55.2	41.6	29.7	17.6	33.8
VOËLVLEI	164 095	54.5	53.7	55.0	36.3	18.1	25.9
WEMMERSHOEK	58 644	43.3	43.6	40.3	70.0	36.7	50.0
TOTAL STORED	898 221	527 821	522 771	444 864	372 483	209 662	316 293
% STORAGE		58.8%	58.2%	49.5%	41.5%	23.3%	35.2%

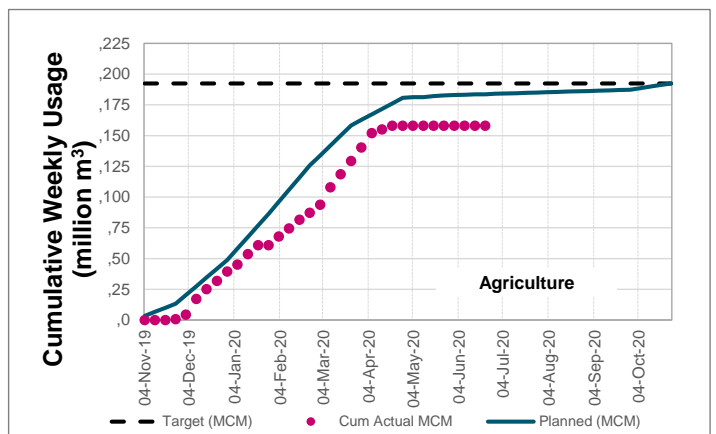
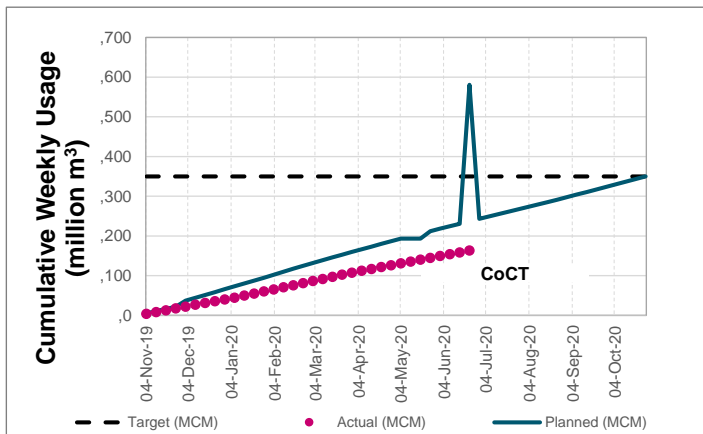
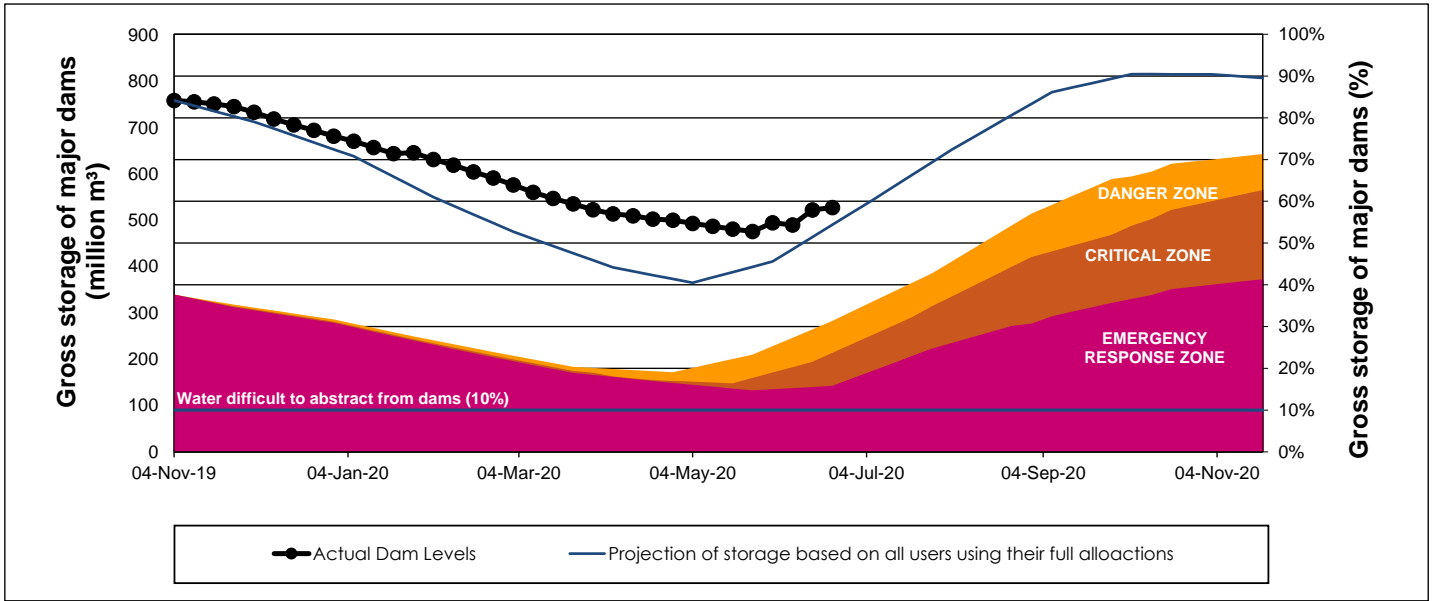
WCWSS Storage Record (2008 - Present)



WCWSS Comparative Storage Graph (5 Years)



WCWSS Dam Storage and Water Use Tracking



Water Stored in Minor Dams

Overall Percentage Full **64.8**

Weekly Change **2.41**

MINOR DAMS	STORAGE						
	CAPACITY	%	%	%	%	%	%
	MI	22 June 2020	Previous week	2019	2018	2017	2016
ALEXANDRA (Table Mountain)	126	47.2	42.4	8.2	92.9	40.1	33.2
DE VILLIERS (Table Mountain)	243	100.3	100.2	73.9	80.2	53.9	92.6
HELY-HUTCHINSON (Table Mountain)	925	64.0	56.7	45.7	100.0	100.8	86.9
KLEINPLAATS (Simon's Town)	1 368	36.2	36.1	42.4	52.4	38.6	40.6
LAND-EN-ZEEZICHT (Helderberg)	451	67.4	65.6	91.7	89.5	69.0	25.3
LEWIS GAY (Simon's Town)	182	38.9	29.8	0.0	99.8	22.6	1.6
VICTORIA (Table Mountain)	128	100.4	96.6	24.9	63.0	88.9	30.3
WOODHEAD (Table Mountain)	954	99.9	99.8	66.7	99.2	100.9	81.7
Total Stored	4 377	2835.9	2730.4	2266.8	3544.2	3060.9	2541.9
Percentages stored		64.8	62.4	51.8	81.0	69.9	58.1

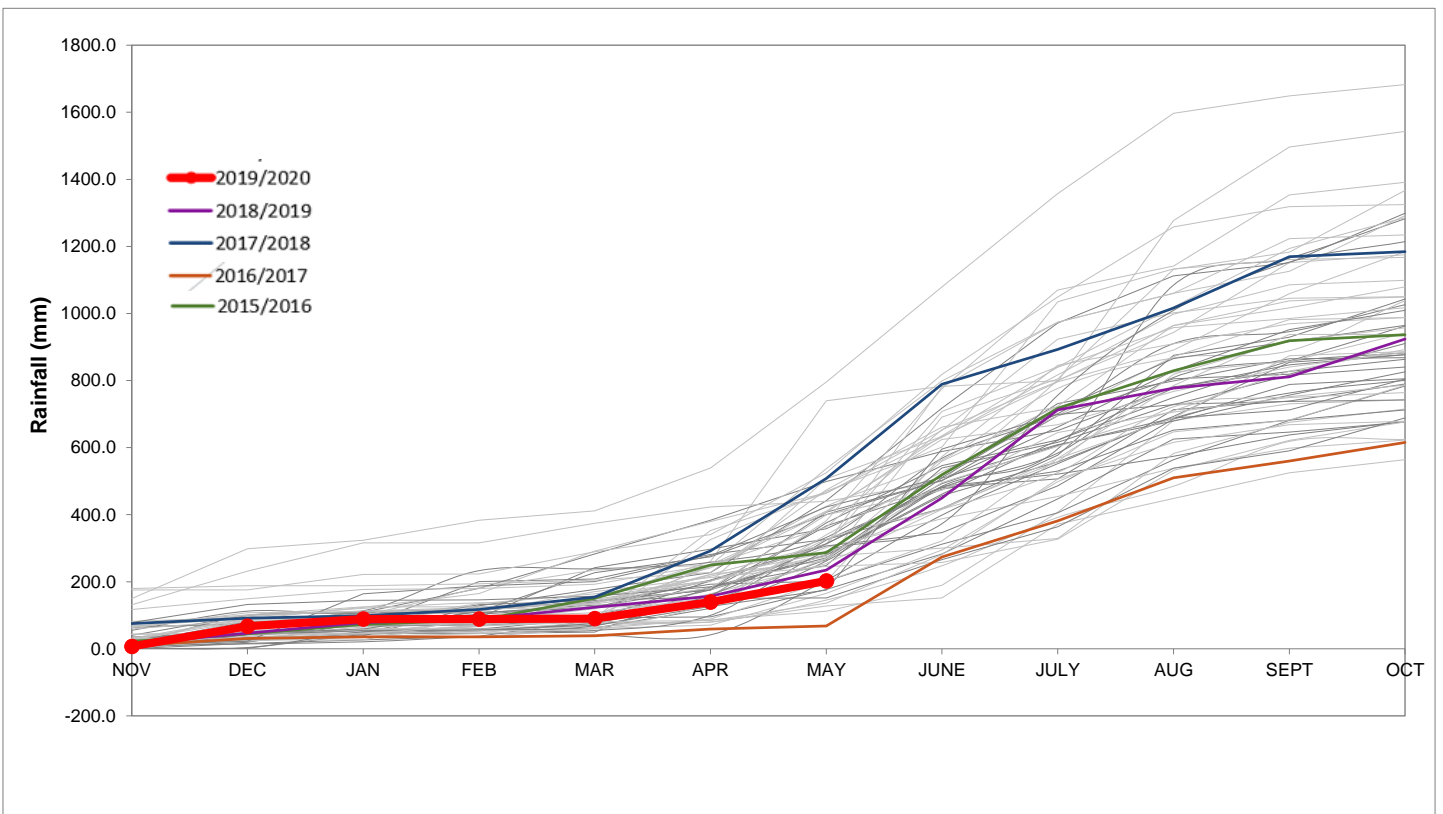
Rainfall Recorded

RAINFALL (mm)	16-Jun	17-Jun	18-Jun	19-Jun	20-Jun	21-Jun	22-Jun	Jun	
								Total*	LT Average
Blackheath Upper	0.0	0.0	0.0	0.0	0.0	1.0		46.0	73.3
Brooklands	0.0	0.0	0.0	1.0	3.0	2.0		88.0	138.9
Newlands	0.0	0.0	0.0	0.0	10.0	35.2		144.7	292.4
Steenbras	0.0	0.0	0.0	0.1	0.2	0.2		48.0	155.4
Table Mountain (Woodhead)	0.0	0.0	0.0	0.0	5.5			95.5	242.4
Theewaterskloof	0.0	0.0	0.0	0.0	0.0	0.0		60.3	71.6
Tygerberg	0.0	0.0	0.0	0.0	0.0	2.4		49.7	93.6
Voëlvllei	0.0	0.0	0.0	0.0	0.5	0.6		52.1	116.8
Wemmershoek	0.0	0.0	0.0	0.0	3.8	6.5		126.9	188.9
Wynberg	0.0	0.0	0.0	0.0	2.0	10.0		76.6	176.7

Notes: *Total/cummulative rainfall for month indicated above
LT: Long Term

Accumulated Monthly Rainfall at Wemmershoek

Note: Wemmershoek station used due to long record and mountaneous location



Drinking Water Quality

SAMPLE PASS RATE

Month	Water Quality Compliance (%)	Target (%)
Mar-19	99.01	98
Apr-19	99.10	98
May-19	99.08	98
Jun-19	99.09	98
Jul-19	99.04	98
Aug-19	99.02	98
Sep-19	98.99	98
Oct-19	99.03	98
Nov-19	99.14	98
Dec-19	99.09	98
Jan-20	99.07	98
Feb-20	99.08	98
Mar-20	99.17	98
Apr-20	99.16	98
May-20	99.20	98

Notes:

This table shows CCT drinking water quality compliance according to the South African National Standard 241:2015. Compliance, measured against all prescribed chemical and microbiological components, consistently exceeds the very high CCT target of 98%. (Overall compliance percentages of continuous sampling and analysis are released on a monthly basis.)