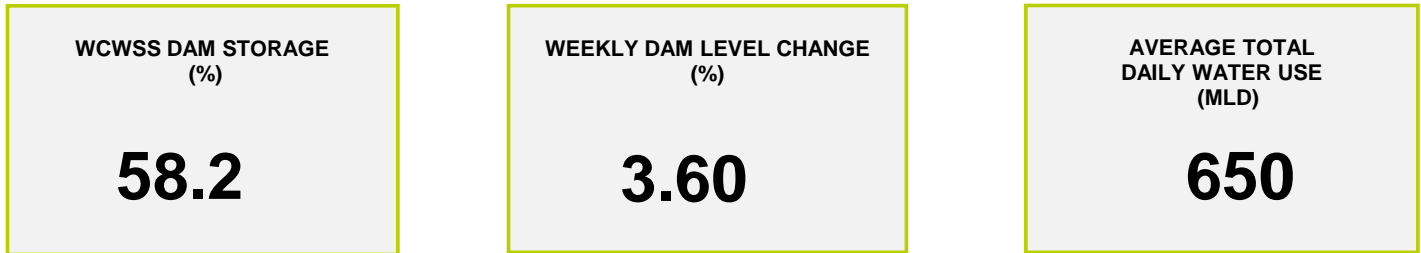
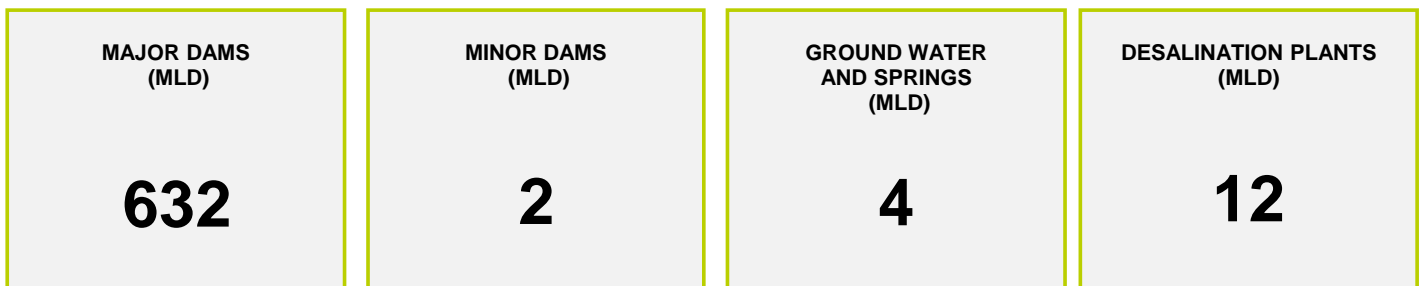




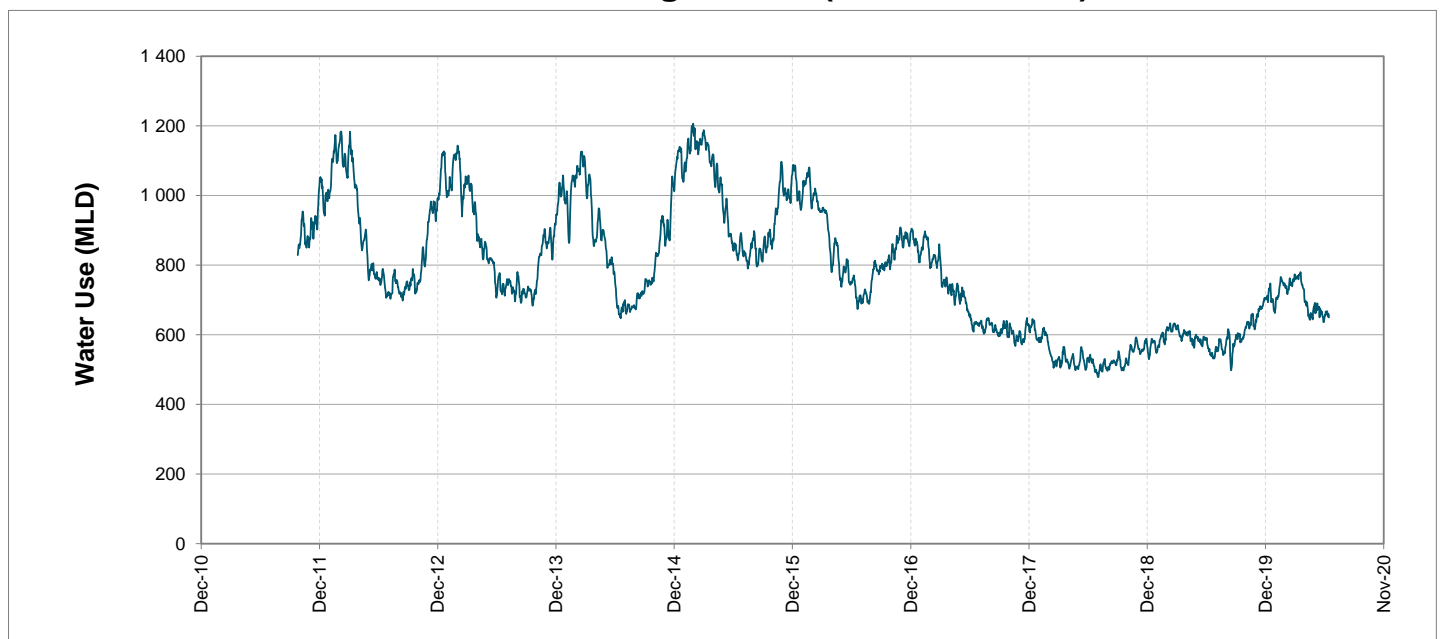
Headline Statistics



Water Production from Different Sources



Overall Water Usage Trend (2010 - Present)



WCWSS means Western Cape Water Supply System

MLD means million litres per day

More information on Water Saving and Restrictions is available on the City of Cape Town's 'ThinkWater' website

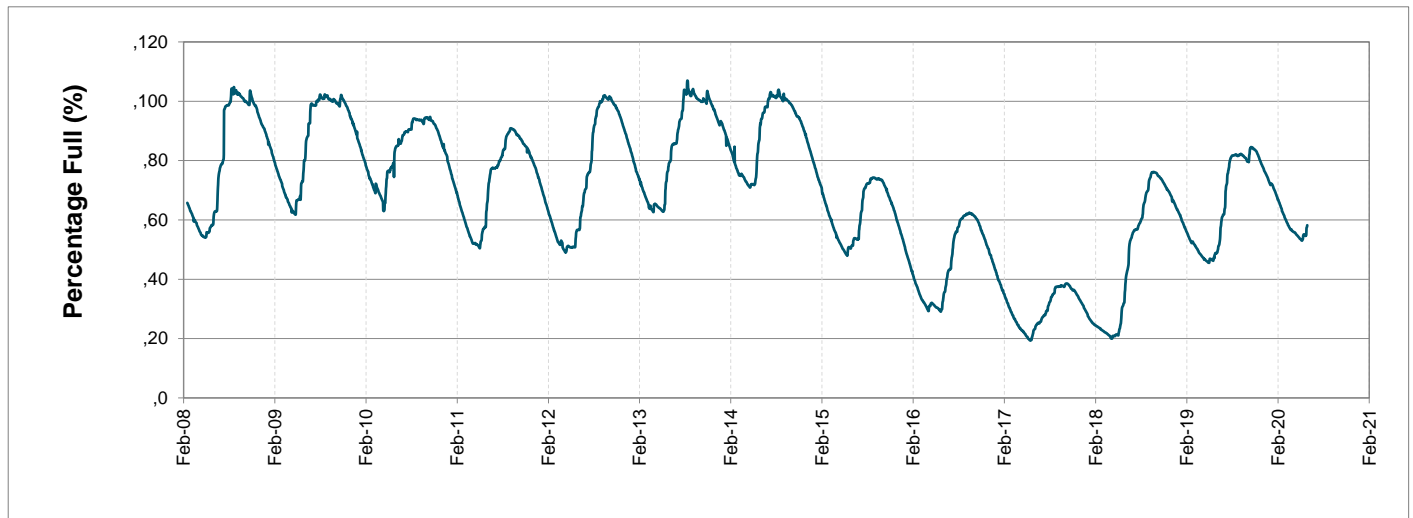
Water Stored in Major Dams (WCWSS)

Overall Percentage Full **58.2%**

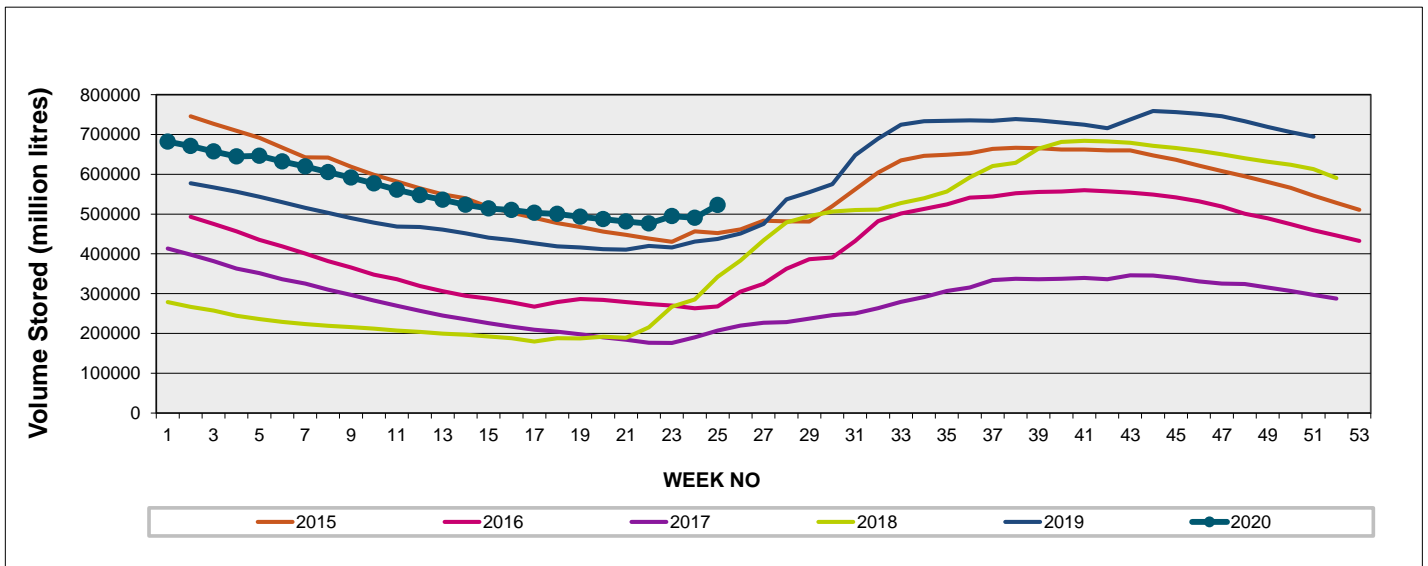
Weekly Change **3.6%**

MAJOR DAMS (WCWSS)	STORAGE						
	CAPACITY	%	%	%	%	%	%
	MI	15 June 2020	Previous week	2019	2018	2017	2016
BERG RIVER	130 010	73.8	69.0	73.5	57.6	33.9	32.8
STEENBRAS LOWER	33 517	49.9	46.3	40.1	41.6	28.9	32.1
STEENBRAS UPPER	31 767	99.2	97.1	69.6	74.5	56.6	56.9
THEEWATERSKLOOF	480 188	55.2	51.7	40.1	23.3	16.6	29.7
VOËLVLEI	164 095	53.7	50.1	55.2	25.9	17.8	20.3
WEMMERSHOEK	58 644	43.6	40.8	40.8	61.7	37.0	43.7
TOTAL STORED	898 221	522 771	490 376	438 128	303 078	202 472	272 873
% STORAGE		58.2%	54.6%	48.8%	33.7%	22.5%	30.4%

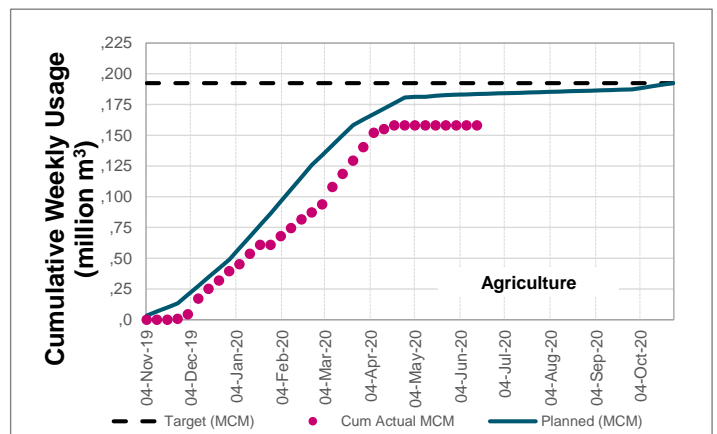
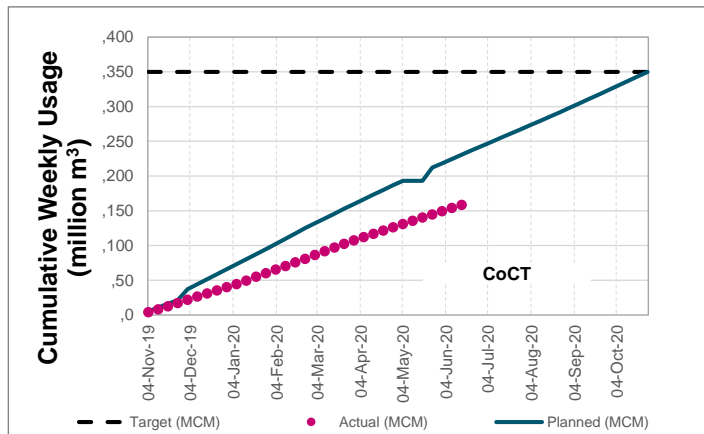
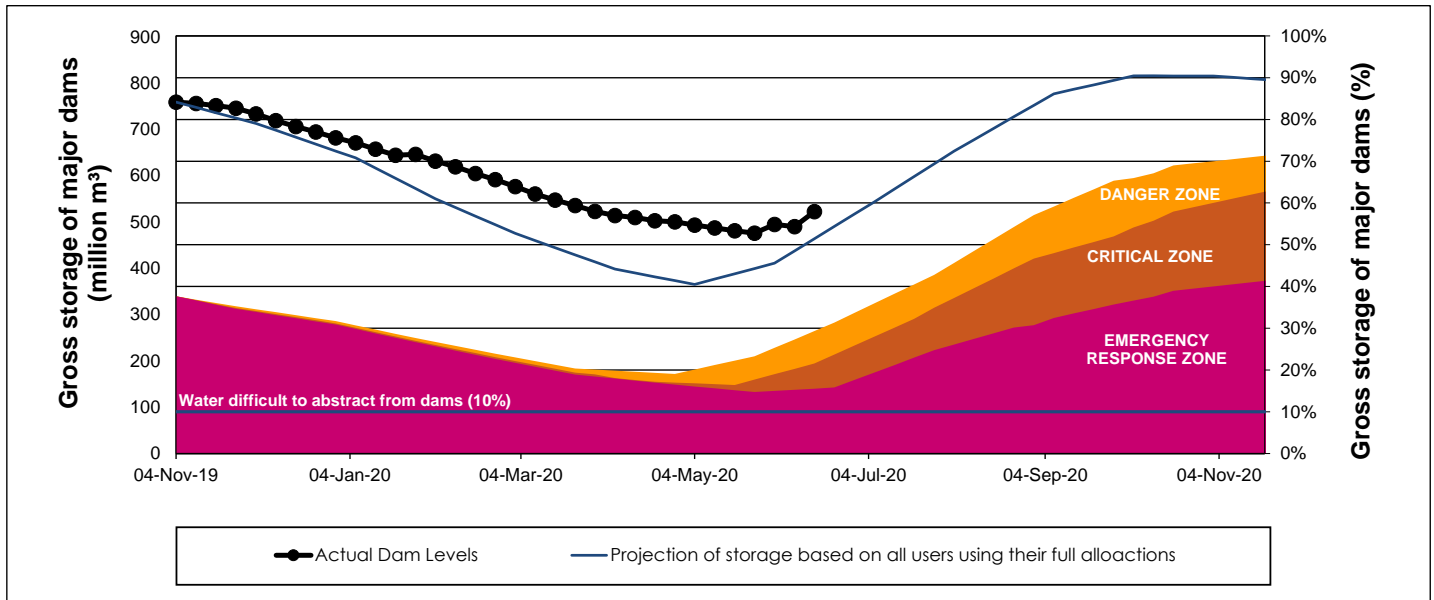
WCWSS Storage Record (2008 - Present)



WCWSS Comparative Storage Graph (5 Years)



WCWSS Dam Storage and Water Use Tracking



Water Stored in Minor Dams

Overall Percentage Full **62.1**

Weekly Change **3.62**

MINOR DAMS	STORAGE						
	CAPACITY	%	%	%	%	%	%
	MI	15 June 2020	Previous week	2019	2018	2017	2016
ALEXANDRA (Table Mountain)	126	42.4	40.6	8.3	92.2	37.7	24.2
DE VILLIERS (Table Mountain)	243	100.2	99.8	73.5	72.4	49.0	79.0
HELY-HUTCHINSON (Table Moun)	925	56.7	42.9	45.6	100.3	101.0	55.6
KLEINPLAATS (Simon's Town)	1 368	36.1	35.4	43.4	43.6	38.6	31.7
LAND-EN-ZEEZICHT (Helderberg)	451	65.6	63.4	93.9	90.7	71.0	22.8
LEWIS GAY (Simon's Town)	182	21.6	21.1	0.0	94.5	16.5	1.4
VICTORIA (Table Mountain)	128	96.6	91.6	25.1	53.4	80.6	11.2
WOODHEAD (Table Mountain)	954	99.8	99.6	66.9	78.8	101.0	85.5
Total Stored	4 377	2716.6	2558.1	2290.1	3202.7	3037.0	2091.9
Percentages stored		62.1	58.4	52.3	73.2	69.4	47.8

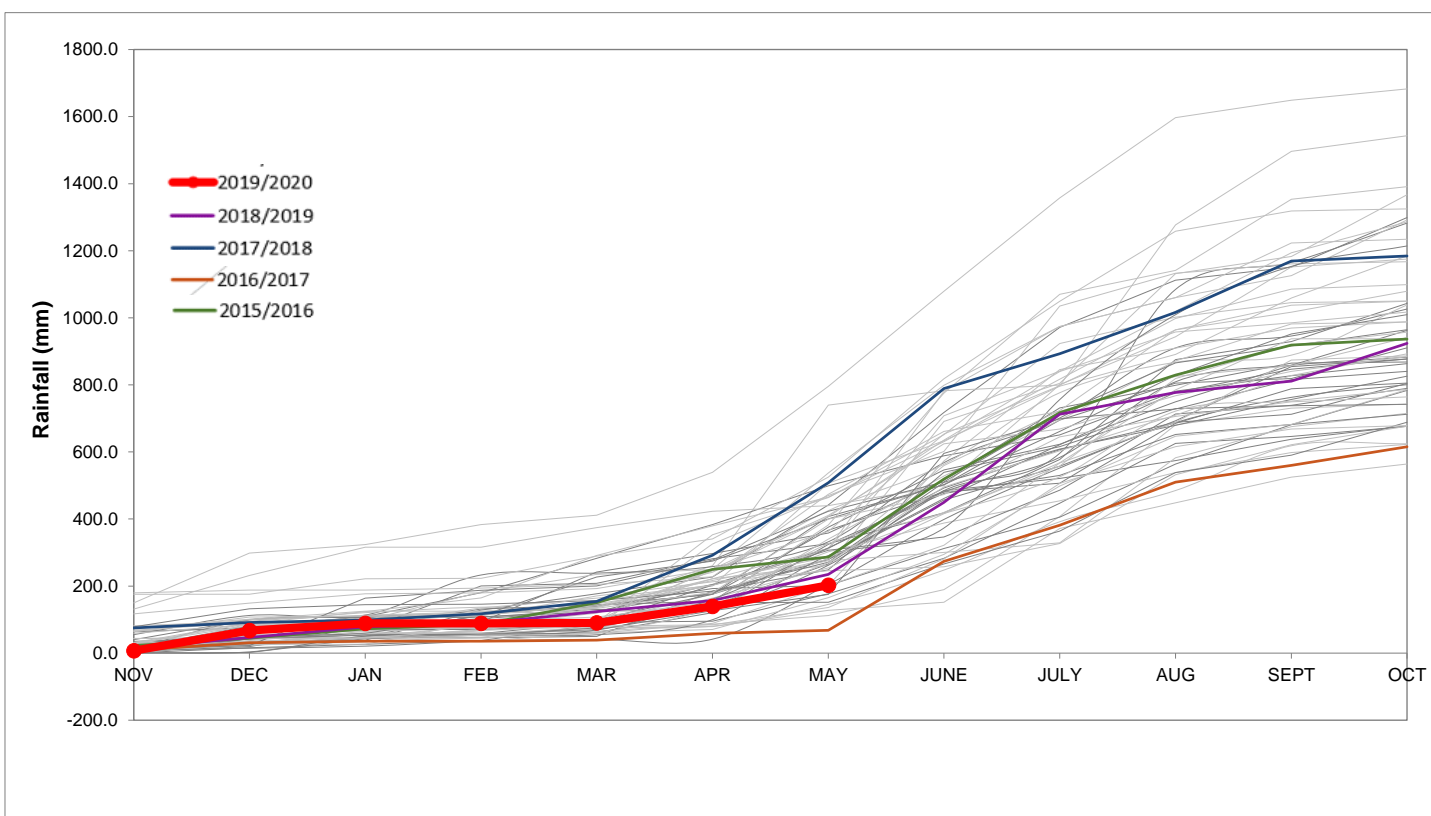
Rainfall Recorded

RAINFALL (mm)	09-Jun	10-Jun	11-Jun	12-Jun	13-Jun	14-Jun	15-Jun	Jun	
								Total*	LT Average
Blackheath Upper	3.0	20.0	18.0	0.0	0.0	4.0		45.0	73.3
Brooklands	24.0	22.0	16.0	1.0	1.0	16.0		82.0	138.9
Newlands	24.0	34.0	19.5	0.0	0.0	22.0		99.5	292.4
Steenbras	10.0	10.0	12.8	0.0	0.0	11.5		47.5	155.4
Table Mountain (Woodhead)	26.0	20.0	17.5	18.5	1.0			90.0	242.4
Theewaterskloof	6.0	32.4	16.0	0.0	0.0	4.8		60.3	71.6
Tygerberg	2.5	21.5	12.3	0.0	0.0	10.5		47.3	93.6
Voëlvllei	0.0	26.0	15.0	0.0	0.0	10.0		51.0	116.8
Wemmershoek	11.0	68.0	26.7	0.0	0.0	10.9		116.6	188.9
Wynberg	8.7	23.7	18.5	2.0	0.0	11.7		64.6	176.7

Notes: *Total/cummulative rainfall for month indicated above
LT: Long Term

Accumulated Monthly Rainfall at Wemmershoek

Note: Wemmershoek station used due to long record and mountaneous location



Drinking Water Quality

SAMPLE PASS RATE

Month	Water Quality Compliance (%)	Target (%)
Jan-19	99.00	98
Feb-19	99.05	98
Mar-19	99.01	98
Apr-19	99.10	98
May-19	99.08	98
Jun-19	99.09	98
Jul-19	99.04	98
Aug-19	99.02	98
Sep-19	98.99	98
Oct-19	99.03	98
Nov-19	99.14	98
Dec-19	99.09	98
Jan-20	99.07	98
Feb-20	99.08	98
Mar-20	99.17	98

Notes:

This table shows CCT drinking water quality compliance according to the South African National Standard 241:2015. Compliance, measured against all prescribed chemical and microbiological components, consistently exceeds the very high CCT target of 98%. (Overall compliance percentages of continuous sampling and analysis are released on a monthly basis.)