



Headline Statistics

WCSS DAM STORAGE
(%)

54.6

WEEKLY DAM LEVEL CHANGE
(%)

-0.50

AVERAGE TOTAL
DAILY WATER USE
(MLD)

659

Water Production from Different Sources

MAJOR DAMS
(MLD)

638

MINOR DAMS
(MLD)

3

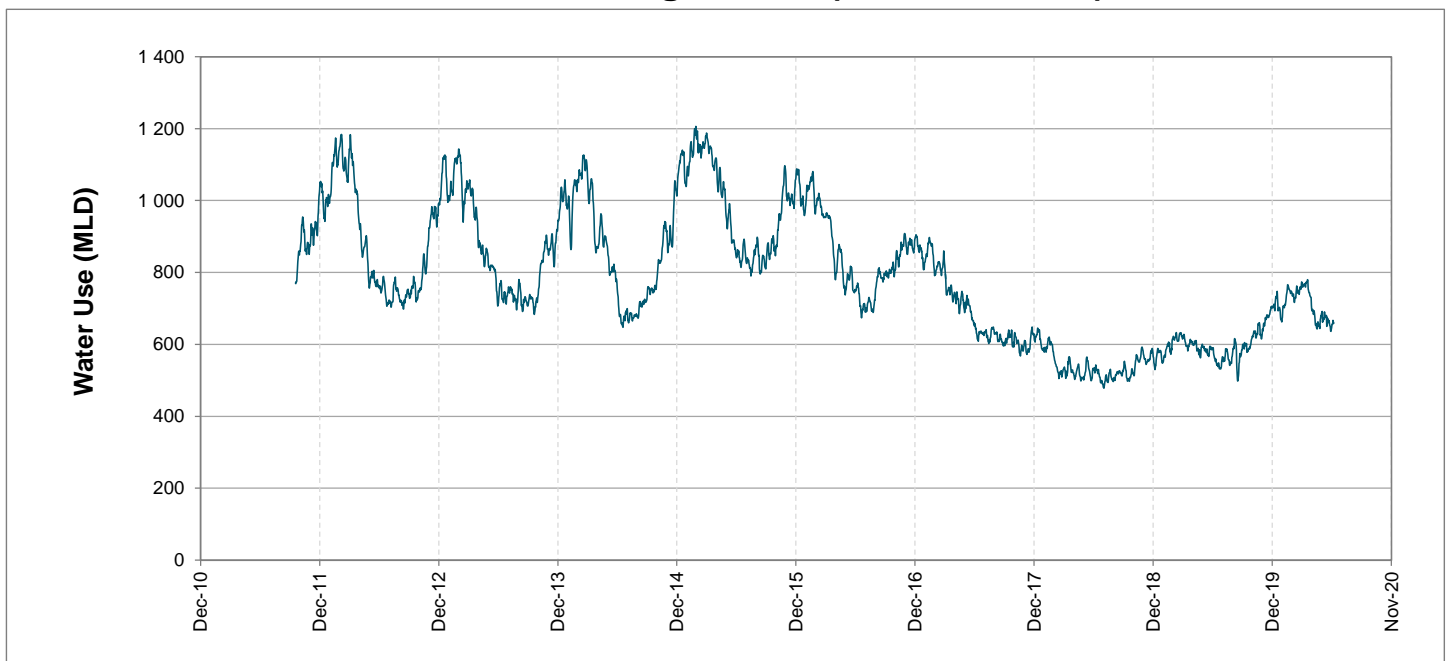
GROUND WATER
AND SPRINGS
(MLD)

4

DESALINATION PLANTS
(MLD)

14

Overall Water Usage Trend (2010 - Present)



WCSS means Western Cape Water Supply System

MLD means million litres per day

More information on Water Saving and Restrictions is available on the City of Cape Town's 'ThinkWater' website

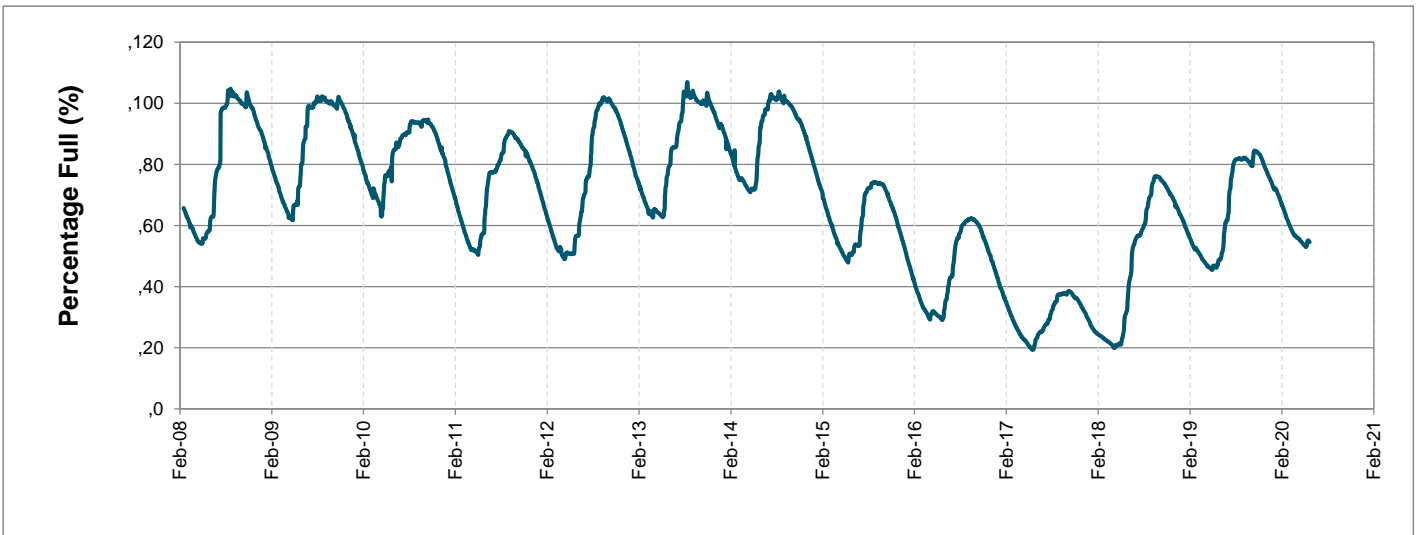
Water Stored in Major Dams (WCWSS)

Overall Percentage Full **54.6%**

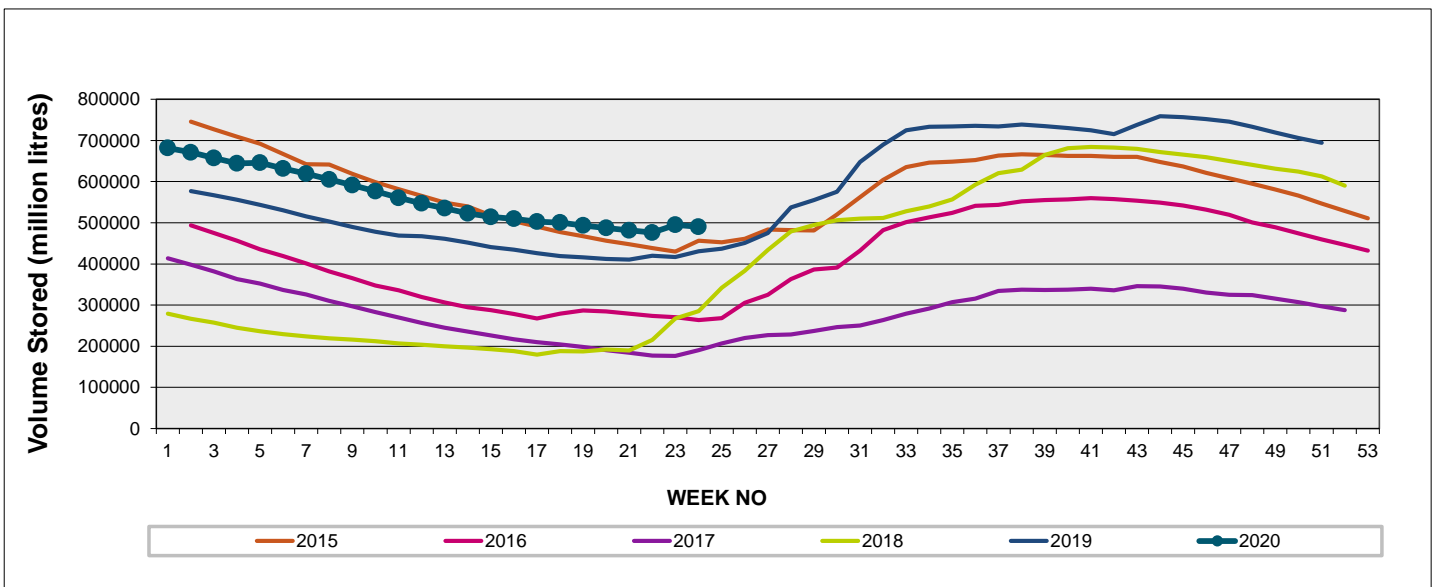
Weekly Change **-0.5%**

MAJOR DAMS (WCWSS)	STORAGE						
	CAPACITY	%	%	%	%	%	%
	MI	08 June 2020	Previous week	2019	2018	2017	2016
BERG RIVER	130 010	69.0	69.6	72.1	52.9	30.9	27.4
STEENBRAS LOWER	33 517	46.3	47.7	39.7	39.7	27.9	31.5
STEENBRAS UPPER	31 767	97.1	97.1	75.2	75.2	50.7	56.8
THEEWATERSKLOOF	480 188	51.7	52.0	37.7	20.9	14.1	29.2
VOËLVLEI	164 095	50.1	50.8	55.2	23.5	15.8	20.2
WEMMERSHOEK	58 644	40.8	42.2	40.9	57.4	35.5	43.2
TOTAL STORED	898 221	490 376	494 978	426 295	278 365	180 108	262 850
% STORAGE		54.6%	55.1%	47.5%	31.0%	20.1%	29.3%

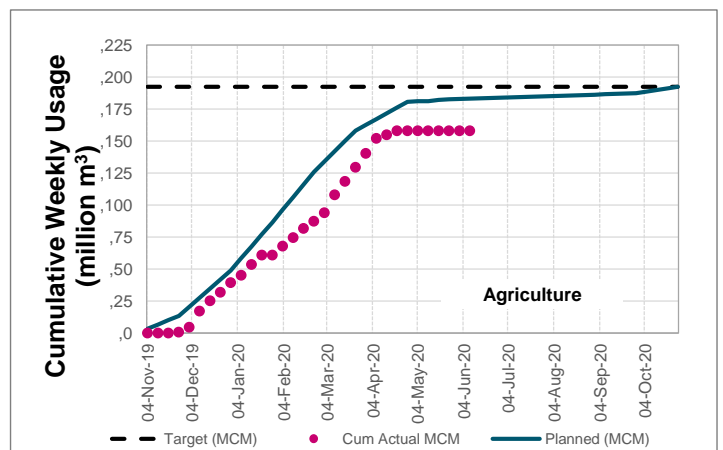
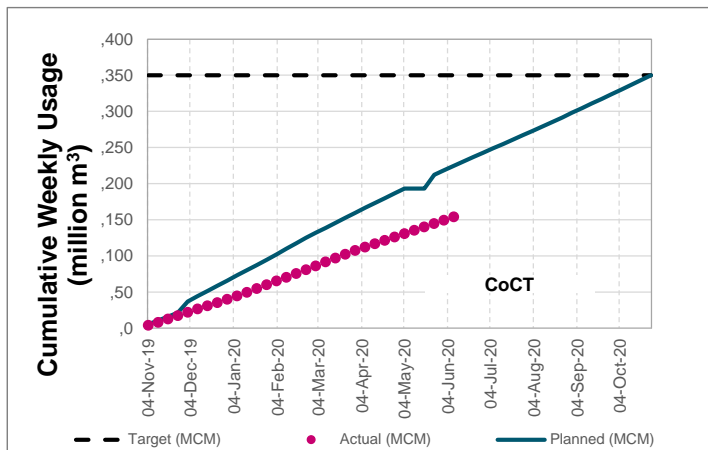
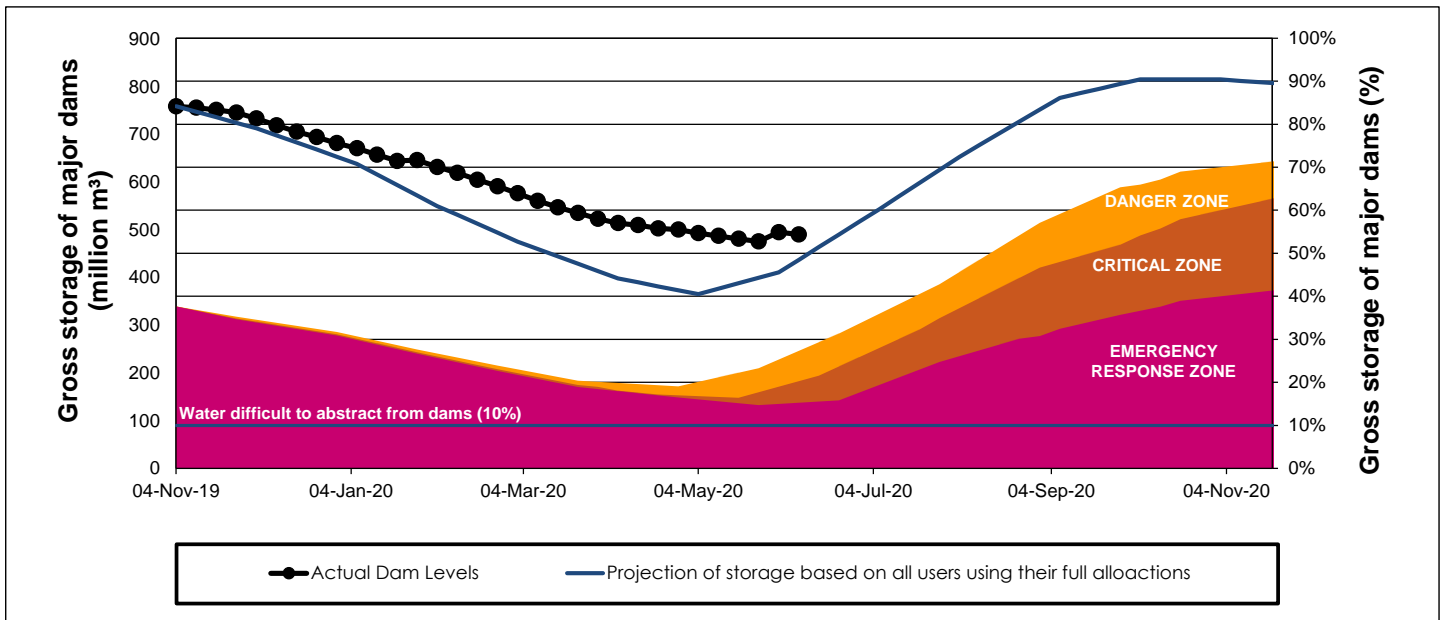
WCWSS Storage Record (2008 - Present)



WCWSS Comparative Storage Graph (5 Years)



WCWSS Dam Storage and Water Use Tracking



Water Stored in Minor Dams

Overall Percentage Full **58.4**

Weekly Change **0.76**

MINOR DAMS	STORAGE						
	CAPACITY	%	%	%	%	%	%
	MI	08 June 2020	Previous week	2019	2018	2017	2016
ALEXANDRA (Table Mountain)	126	40.6	41.9	0.0	90.2	30.7	19.6
DE VILLIERS (Table Mountain)	243	99.8	92.9	63.5	66.3	40.4	74.3
HELY-HUTCHINSON (Table Mour)	925	42.9	41.2	34.5	99.8	99.0	41.4
KLEINPLAATS (Simon's Town)	1 368	35.4	36.2	42.8	41.2	38.2	30.4
LAND-EN-ZEEZICHT (Helderberg)	451	63.4	63.6	95.2	90.8	69.5	19.6
LEWIS GAY (Simon's Town)	182	21.1	13.3	0.0	87.7	14.9	2.0
VICTORIA (Table Mountain)	128	91.6	90.0	21.6	44.2	68.8	0.0
WOODHEAD (Table Mountain)	954	99.6	99.8	63.6	71.5	70.6	88.2
Total Stored	4 377	2558.1	2524.7	2114.1	3057.3	2667.8	1923.3
Percentages stored		58.4	57.7	48.3	69.8	60.9	43.9

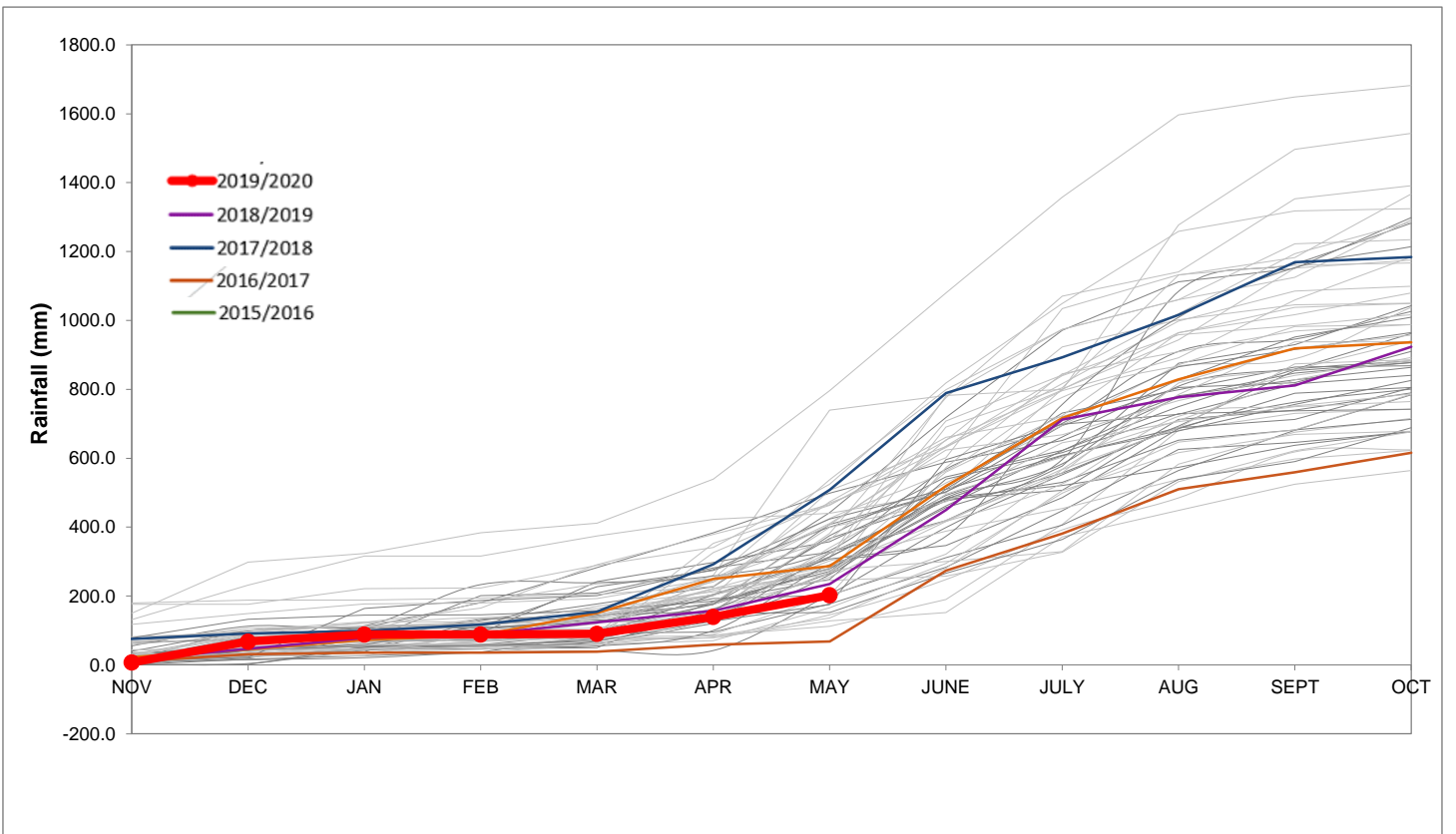
Rainfall Recorded

RAINFALL (mm)	02-Jun	03-Jun	04-Jun	05-Jun	06-Jun	07-Jun	08-Jun	Jun	
								Total*	LT Average
Blackheath Upper	0.0	0.0	0.0	0.0	0.0	0.0	0.0	0.0	73.3
Brooklands	2.0	0.0	0.0	0.0	0.0	0.0	0.0	2.0	138.9
Newlands	0.0	0.0	0.0	0.0	0.0	0.0	0.0	0.0	292.4
Steenbras	3.2	0.0	0.0	0.0	0.0	0.0	0.0	3.2	155.4
Table Mountain (Woodhead)	7.0	0.0	0.0	0.0	0.0	0.0	0.0	7.0	242.4
Theewaterskloof	1.1	0.0	0.0	0.0	0.0	0.0	0.0	1.1	71.6
Tygerberg	0.5	0.0	0.0	0.0	0.0	0.0	0.0	0.5	93.6
Voëlvlei	0.0	0.0	0.0	0.0	0.0	0.0	0.0	0.0	116.8
Wemmershoek	0.0	0.0	0.0	0.0	0.0	0.0	0.0	0.0	188.9
Wynberg	0.0	0.0	0.0	0.0	0.0	0.0	0.0	0.0	176.7

Notes: *Total/cummulative rainfall for month indicated above
LT: Long Term

Accumulated Monthly Rainfall at Wemmershoek

Note: Wemmershoek station used due to long record and mountaneous location



Drinking Water Quality

SAMPLE PASS RATE

Month	Water Quality Compliance (%)	Target (%)
Jan-19	99.00	98
Feb-19	99.05	98
Mar-19	99.01	98
Apr-19	99.10	98
May-19	99.08	98
Jun-19	99.09	98
Jul-19	99.04	98
Aug-19	99.02	98
Sep-19	98.99	98
Oct-19	99.03	98
Nov-19	99.14	98
Dec-19	99.09	98
Jan-20	99.07	98
Feb-20	99.08	98
Mar-20	99.17	98

Notes:

This table shows CCT drinking water quality compliance according to the South African National Standard 241:2015. Compliance, measured against all prescribed chemical and microbiological components, consistently exceeds the very high CCT target of 98%. (Overall compliance percentages of continuous sampling and analysis are released on a monthly basis.)