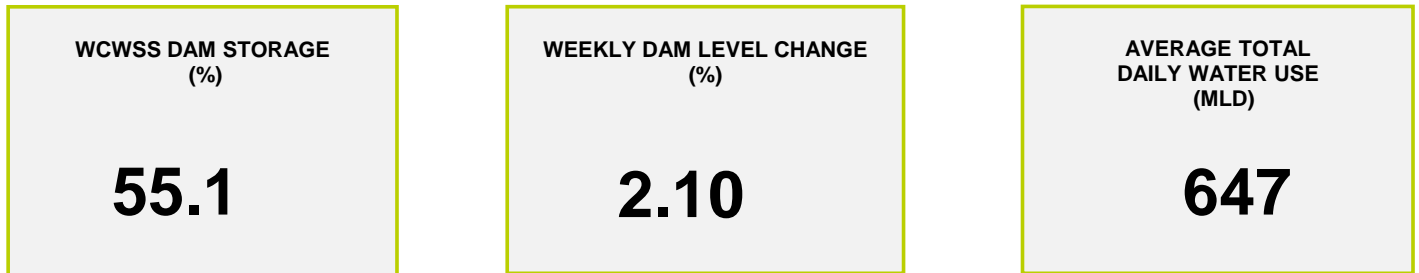
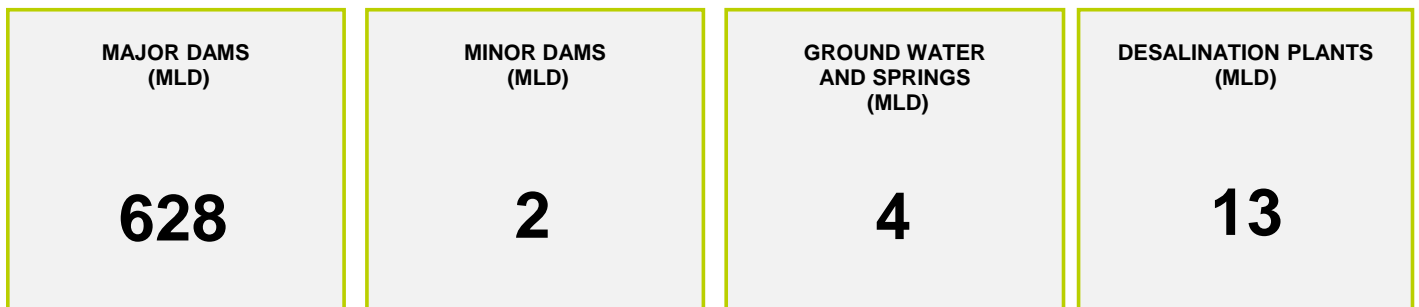




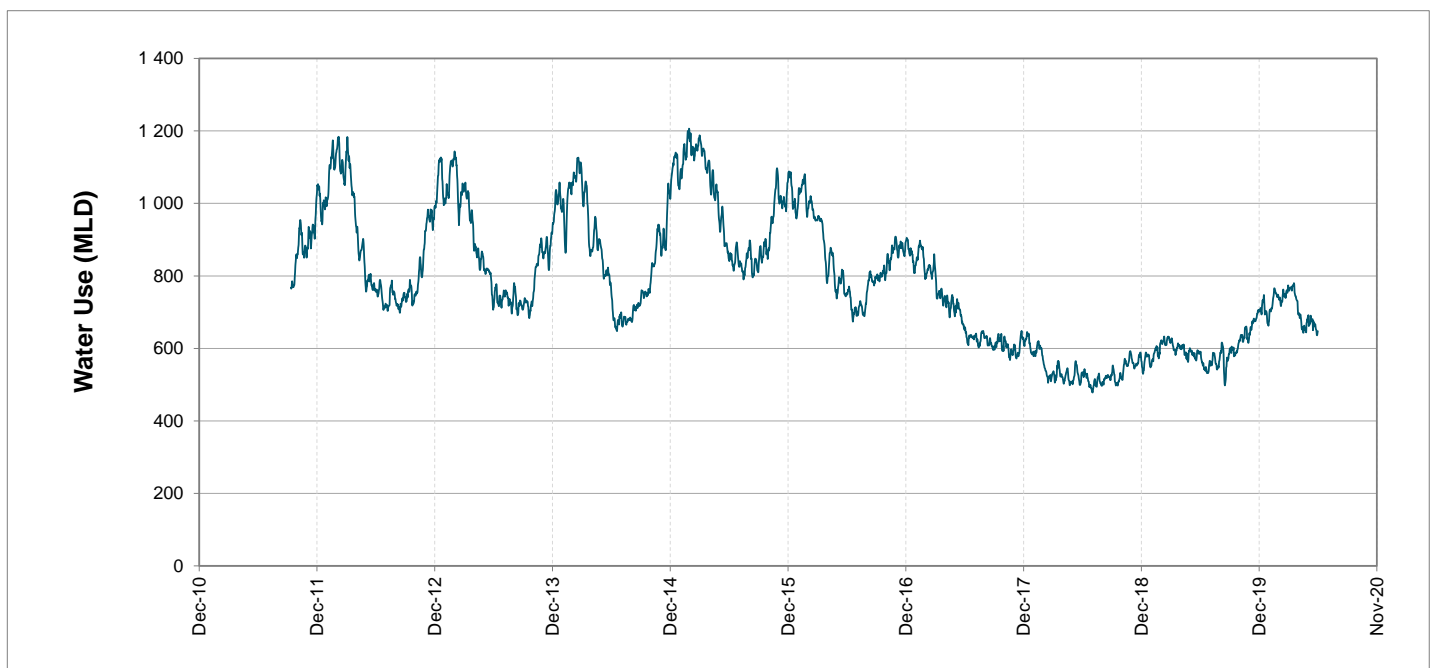
Headline Statistics



Water Production from Different Sources



Overall Water Usage Trend (2010 - Present)



WCWSS means Western Cape Water Supply System

MLD means million litres per day

More information on Water Saving and Restrictions is available on the City of Cape Town's 'ThinkWater' website

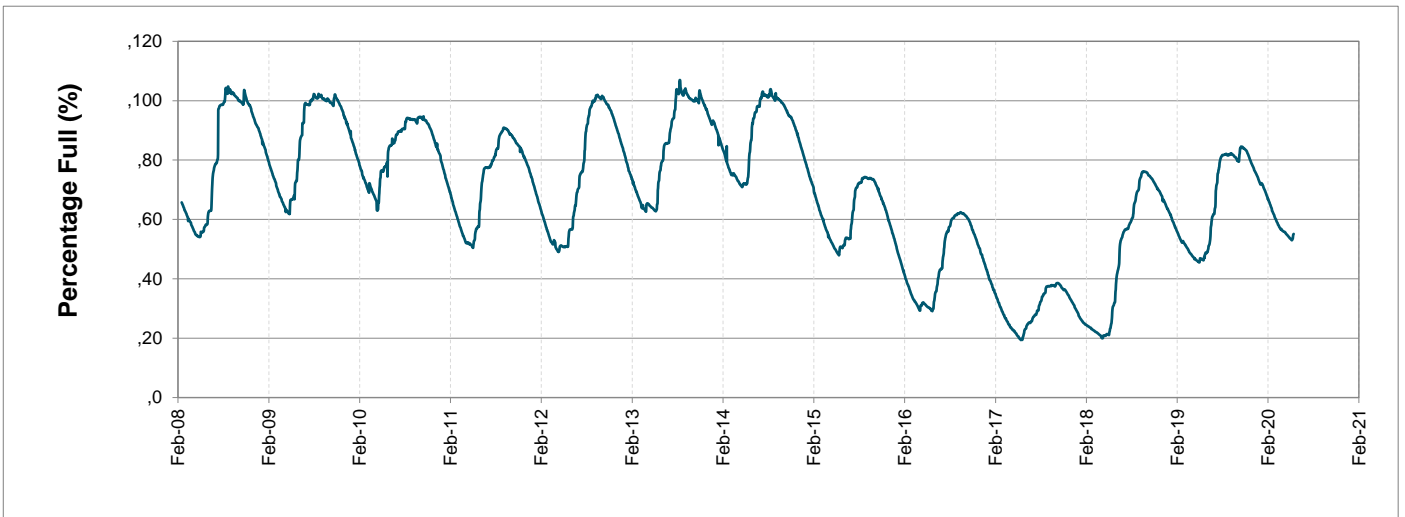
Water Stored in Major Dams (WCWSS)

Overall Percentage Full **55.1%**

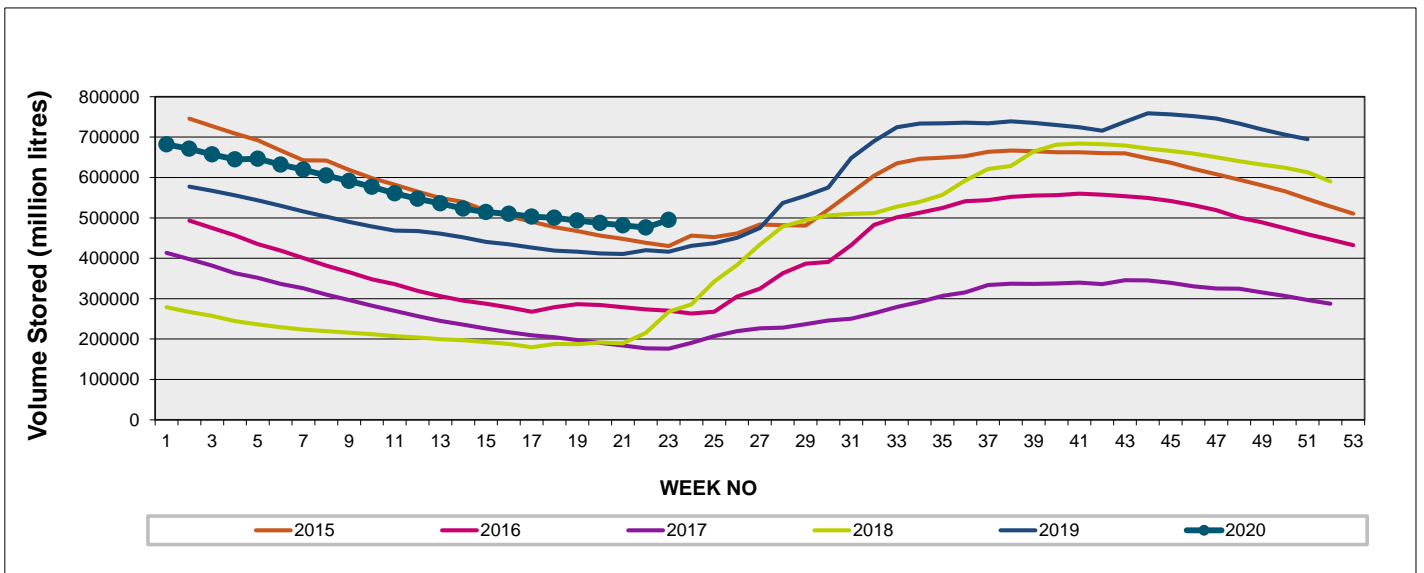
Weekly Change **2.1%**

MAJOR DAMS (WCWSS)	STORAGE						
	CAPACITY	%	%	%	%	%	%
	MI	01 June 2020	Previous week	2019	2018	2017	2016
BERG RIVER	130 010	69.6	65.1	70.7	47.8	30.5	27.6
STEENBRAS LOWER	33 517	47.7	46.5	39.5	35.3	24.0	33.6
STEENBRAS UPPER	31 767	97.1	96.3	64.6	59.6	54.7	56.7
THEEWATERSKLOOF	480 188	52.0	49.9	36.8	16.4	13.5	29.9
VOËLVLEI	164 095	50.8	49.7	55.0	19.1	14.2	20.7
WEMMERSHOEK	58 644	42.2	41.2	40.9	52.9	35.5	45.1
TOTAL STORED	898 221	494 978	476 026	416 741	234 103	174 098	269 080
% STORAGE		55.1%	53.0%	46.4%	26.1%	19.4%	30.0%

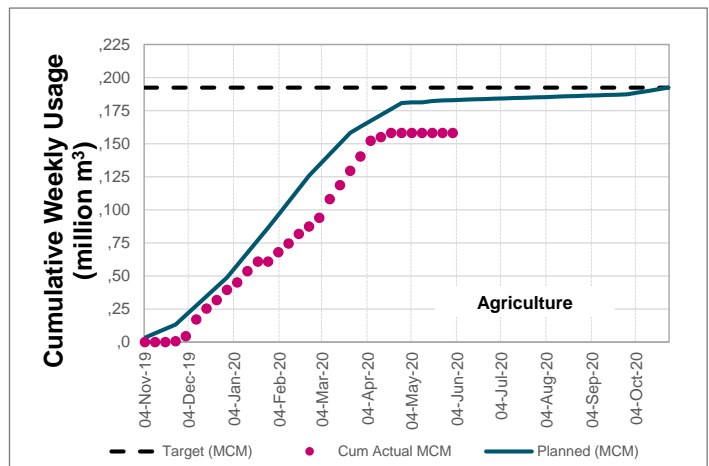
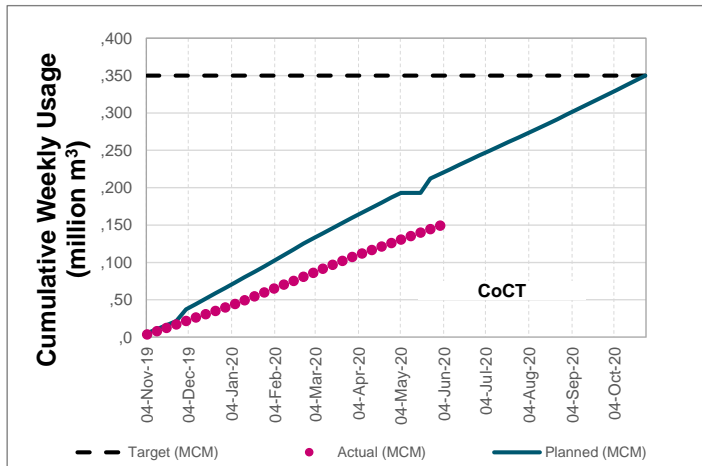
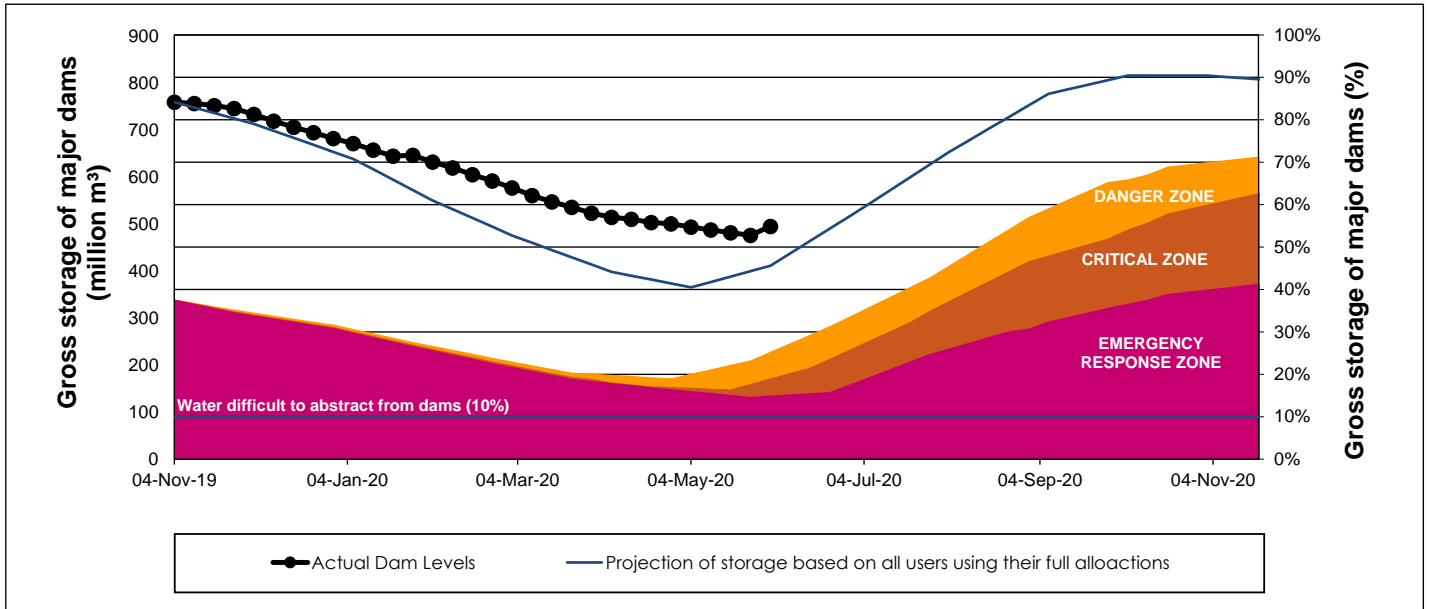
WCWSS Storage Record (2008 - Present)



WCWSS Comparative Storage Graph (5 Years)



WCWSS Dam Storage and Water Use Tracking



Water Stored in Minor Dams

Overall Percentage Full **57.7**

Weekly Change **7.48**

MINOR DAMS	STORAGE						
	CAPACITY	%	%	%	%	%	%
	MI	01 June 2020	Previous week	2019	2018	2017	2016
ALEXANDRA (Table Mountain)	126	41.9	33.0	0.0	89.9	30.3	19.6
DE VILLIERS (Table Mountain)	243	92.9	93.6	65.1	55.6	41.2	79.0
HELY-HUTCHINSON (Table Mountain)	925	41.2	13.1	17.4	82.0	98.3	48.5
KLEINPLAATS (Simon's Town)	1 368	36.2	36.5	42.9	37.0	38.8	30.4
LAND-EN-ZEEZICHT (Helderberg)	451	63.6	62.1	95.9	91.5	69.0	18.9
LEWIS GAY (Simon's Town)	182	13.3	5.8	0.0	77.1	13.9	5.2
VICTORIA (Table Mountain)	128	90.0	72.7	8.9	27.3	68.2	0.0
WOODHEAD (Table Mountain)	954	99.8	97.7	59.2	65.6	72.0	80.1
Total Stored	4 377	2524.7	2197.2	1906.6	2718.6	2679.5	1924.2
Percentages stored		57.7	50.2	43.6	62.1	61.2	44.0

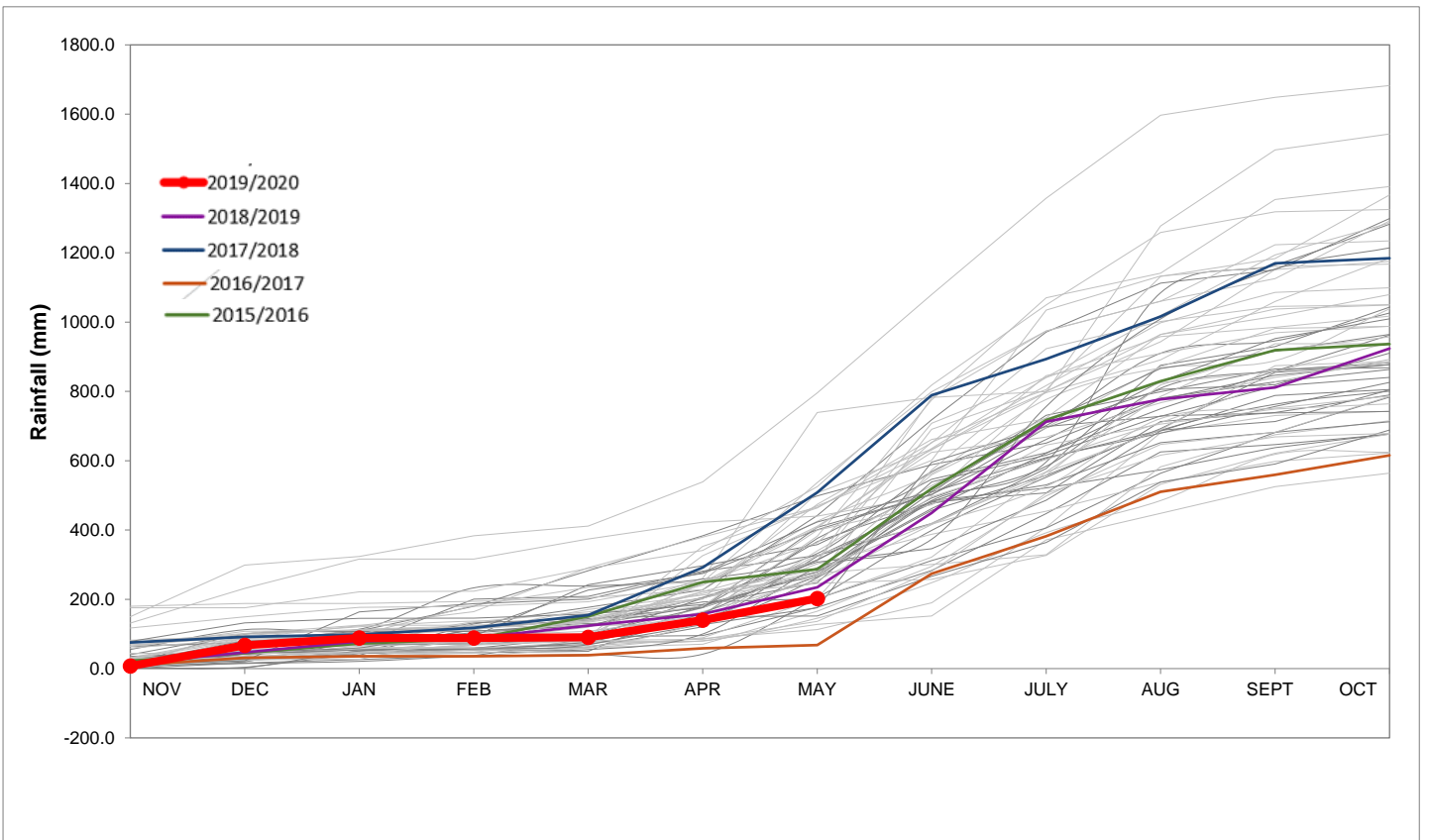
Rainfall Recorded

RAINFALL (mm)	25-May	26-May	27-May	28-May	29-May	30-May	31-May	Jun	
								Total*	LT Average
Blackheath Upper	20.0	3.0	0.0	4.5	1.3	0.0	0.0	0.0	73.3
Brooklands	9.0	3.0	4.0	20.0	1.0	0.0	0.0	0.0	138.9
Newlands	13.0	2.0	7.5	134.5	1.2	0.0	0.0	0.0	292.4
Steenbras	13.2	2.5	0.0	15.5	0.2	0.0	0.0	0.0	155.4
Table Mountain (Woodhead)	23.5	6.0	24.0	65.5	0.0	0.0	0.0	0.0	242.4
Theewaterskloof	23.8	3.3	0.0	3.2	0.0	0.0	0.0	0.0	71.6
Tygerberg	28.0	3.5	0.0	14.5	3.4	0.0	0.0	0.0	93.6
Voëlvei	26.0	0.4	0.0	4.0	0.0	0.0	0.0	0.0	116.8
Wemmershoek	20.4	0.7	0.0	10.1	0.8	0.0	0.0	0.0	188.9
Wynberg	0.0	2.0	4.0	37.0	0.0	0.0	0.0	0.0	176.7

Notes: *Total/cummulative rainfall for month indicated above
LT: Long Term

Accumulated Monthly Rainfall at Wemmershoek

Note: Wemmershoek station used due to long record and mountaneous location



Drinking Water Quality

SAMPLE PASS RATE

Month	Water Quality Compliance (%)	Target (%)
Jan-19	99.00	98
Feb-19	99.05	98
Mar-19	99.01	98
Apr-19	99.10	98
May-19	99.08	98
Jun-19	99.09	98
Jul-19	99.04	98
Aug-19	99.02	98
Sep-19	98.99	98
Oct-19	99.03	98
Nov-19	99.14	98
Dec-19	99.09	98
Jan-20	99.07	98
Feb-20	99.08	98
Mar-20	99.17	98

Notes:

This table shows CCT drinking water quality compliance according to the South African National Standard 241:2015. Compliance, measured against all prescribed chemical and microbiological components, consistently exceeds the very high CCT target of 98%. (Overall compliance percentages of continuous sampling and analysis are released on a monthly basis.)